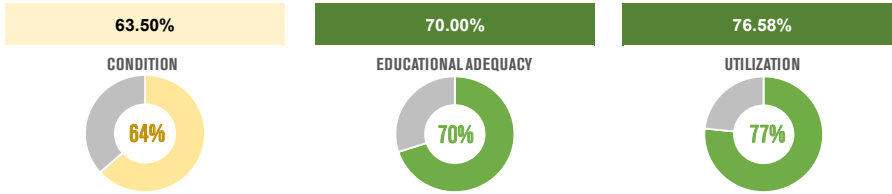


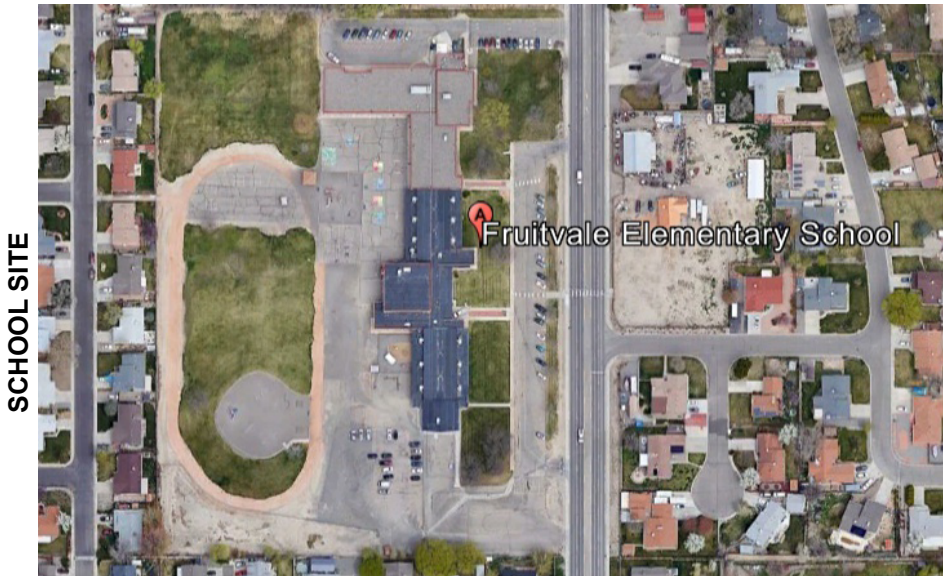
FRUITVALE ELEMENTARY SCHOOL

District: Mesa County Valley District 51
 Facility: Fruitvale Elementary School
 Address: 585 30 Rd
 City: Grand Junction, CO
 Site Area (AC): 11.95
 Gross Building Area (SF): 54,166.00
 Number of Stories: 1
 Years Constructed / Renovated: 1953 / 1998
 Total Replacement Value: \$25,186,783.76
 Total Condition Budget: \$9,198,385.88
 Facility Condition Score: 63.5%
 Educational Adequacy Score : 70%
 Enrollment: 376
 Capacity: 491
 Utilization (% Capacity): 77%



NARRATIVE SUMMARY OF BUILDING AND SITE

Fruitvale Elementary School is in fair condition. The most significant physical needs are related to replacing HVAC rooftop units, replacing plumbing fixtures, site and parking lot paving. This school's educational adequacy would benefit from modernized special education and small group support spaces, improved music room, and improved acoustical and lighting conditions in the learning environments. The school enrollment is within the ideal range of 75%-90% utilization.



SCHOOL SITE

PROPOSED SCOPE

	SCOPE DESCRIPTION:	TOTAL PROJECT COST:	PHASE:
SAFETY + SECURITY	Install Bollards at main entry Update security system to monitor exterior doors Access control at all exterior doors	\$530,000	1
PRIORITY MAINTENANCE + LIFE SAFETY	Replace casework at sinks for code / ADA compliance Relocate kiln Install permanent bottle filler Abate ACM ceiling	\$413,000	1
LEARNING ENVIRONMENT	Create modernized spaces for small group, intervention, project-based learning and SPED	\$580,000	1
FUTURE SCOPE	Replace damaged concrete walks, ADA ramps Replace roof Replace windows / glass block with new windows Seal and repoint masonry, repair cracking Replace exterior HM doors and all hardware Replace door hardware, casework, kitchen ceiling Replace seam flooring with poured epoxy HVAC : Replace classroom RTU's and boilers Replace light fixtures and fire alarm Replace plumbing fixtures and older distribution piping Replace signage throughout New Instructional technology & furniture		