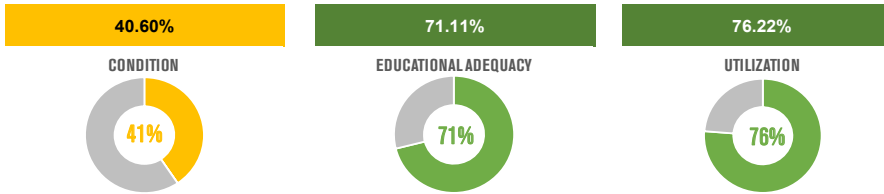


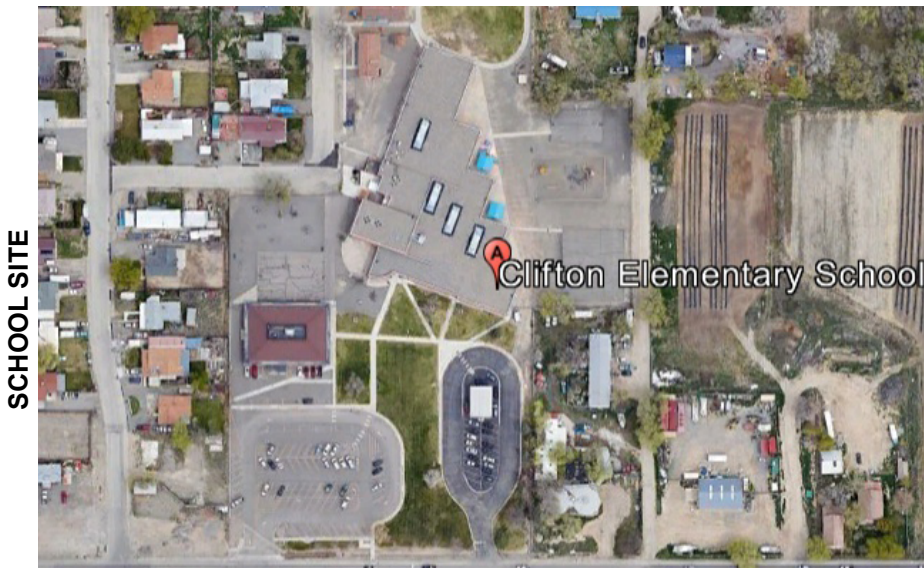
CLIFTON ELEMENTARY SCHOOL

District: Mesa County Valley District 5
 Facility: Clifton Elementary
 Address: 432 30 1/4 Road
 City: Clifton, CO
 Site Area (AC): 8.42
 Gross Building Area (SF): 53,714.00
 Number of Stories: 1
 Years Constructed / Renovated: 1968 / 1982
 Total Replacement Value: \$24,976,607.15
 Total Condition Budget: \$14,830,334.25
 Facility Condition Score: 40.6%
 Educational Adequacy Score : 71%
 Enrollment: 375
 Capacity: 492
 Utilization (% Capacity): 76%



NARRATIVE SUMMARY OF BUILDING AND SITE

Clifton Elementary School is in poor condition. The most significant physical needs are related to replacing HVAC rooftop units and controls, adding a fire sprinkler system, site and parking lot paving, restroom renovations for ADA access, flooring replacement and an upcoming need for window replacement. This school's educational adequacy would benefit from modernized special education and small group support spaces, and improved acoustical and conditions in the learning environments. The school enrollment is within the ideal range of 75%-90% utilization.



SCHOOL SITE

PROPOSED SCOPE

	SCOPE DESCRIPTION:	TOTAL PROJECT COST:	PHASE:
SAFETY + SECURITY	Building signage Traffic bollards at entry Radio communications antenna Access control at all exterior doors Replace PA System	\$575,000	1
PRIORITY MAINTENANCE + LIFE SAFETY	Install fire sprinkler system	\$2,649,000	1
LEARNING ENVIRONMENT	Create modernized spaces for small group, intervention, project-based learning and SPED	\$580,000	1
FUTURE SCOPE	Replace damaged concrete walks and asphalt Replace roof Masonry repairs Replace finishes Replace HVAC equipment Replace light fixtures - LED Upgrade classroom technology and furniture Renovate toilet rooms to meet ADA Replace room signage throughout Replace boilers and hot water heaters ADA door hardware replacement		