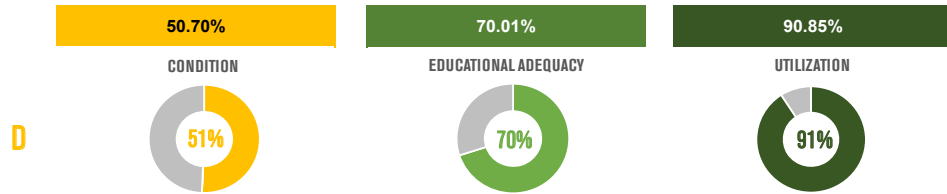


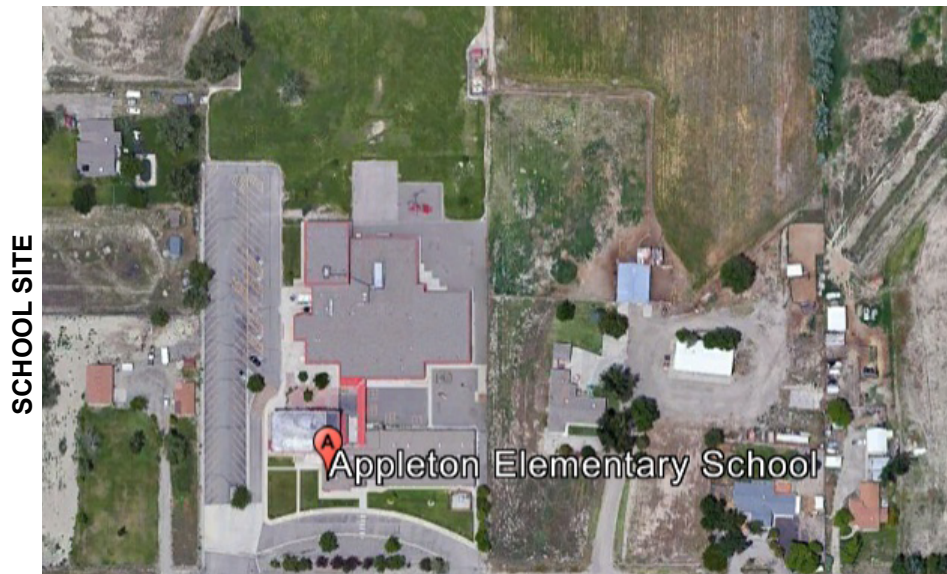
APPLETON ELEMENTARY SCHOOL

District: Mesa County Valley District 51
 Facility: Appleton Elementary School
 Address: 2358 H Road
 City: Grand Junction, CO
 Site Area (AC): 4.41
 Gross Building Area (SF): 51,795.00
 Number of Stories: 1
 Years Constructed / Renovated: 1938/ 1956/ 1969/ 1998
 Total Replacement Value: \$24,084,286.54
 Total Condition Budget: \$11,879,424.69
 Facility Condition Score: 50.7%
 Educational Adequacy Score: 70%
 Enrollment: 447
 Capacity: 492
 Utilization (% Capacity): 91%



NARRATIVE SUMMARY OF BUILDING AND SITE

Appleton Elementary School is in poor condition. The most significant physical needs are related to ADA accessibility upgrades, plus site and foundation drainage improvements. The building will soon need a new roof, windows, boilers, pumps and rooftop mechanical units. Upgrades are recommended for light fixtures and fire alarm system. This school's educational adequacy would benefit from modernized special education and small group support spaces, and improved storage and acoustical conditions in the learning environments. The school enrollment is above the ideal range of 75%-90% utilization.



SCHOOL SITE

PROPOSED SCOPE

	SCOPE DESCRIPTION:	TOTAL PROJECT COST:	PHASE:
SAFETY + SECURITY	Security camera upgrades Traffic bollards at entry Radio communications antenna Rolling shutter at admin window Access control at all exterior doors	\$292,000	1
PRIORITY MAINTENANCE + LIFE SAFETY	Add fire sprinkler system ACM abatement Replace hardscape paving for drainage and ADA Basement foundation water control Add ADA motorized lifts Replace hvac units, controls and boiler pump Replace plumbing fixtures Renovate toilet rooms to be ADA	\$7,452,000	1
LEARNING ENVIRONMENT	Create modernized spaces for small group, intervention, project-based learning and SPED	\$580,000	1
FUTURE SCOPE	Replace damaged concrete walks and stairs Replace roof Masonry repairs Replace non ADA door hardware Replace casework Replace room signage throughout Gym HVAC replacement Water heater replacement Upgrade instructional technology New furniture Acoustic insulation above ceiling Add operable window coverings		