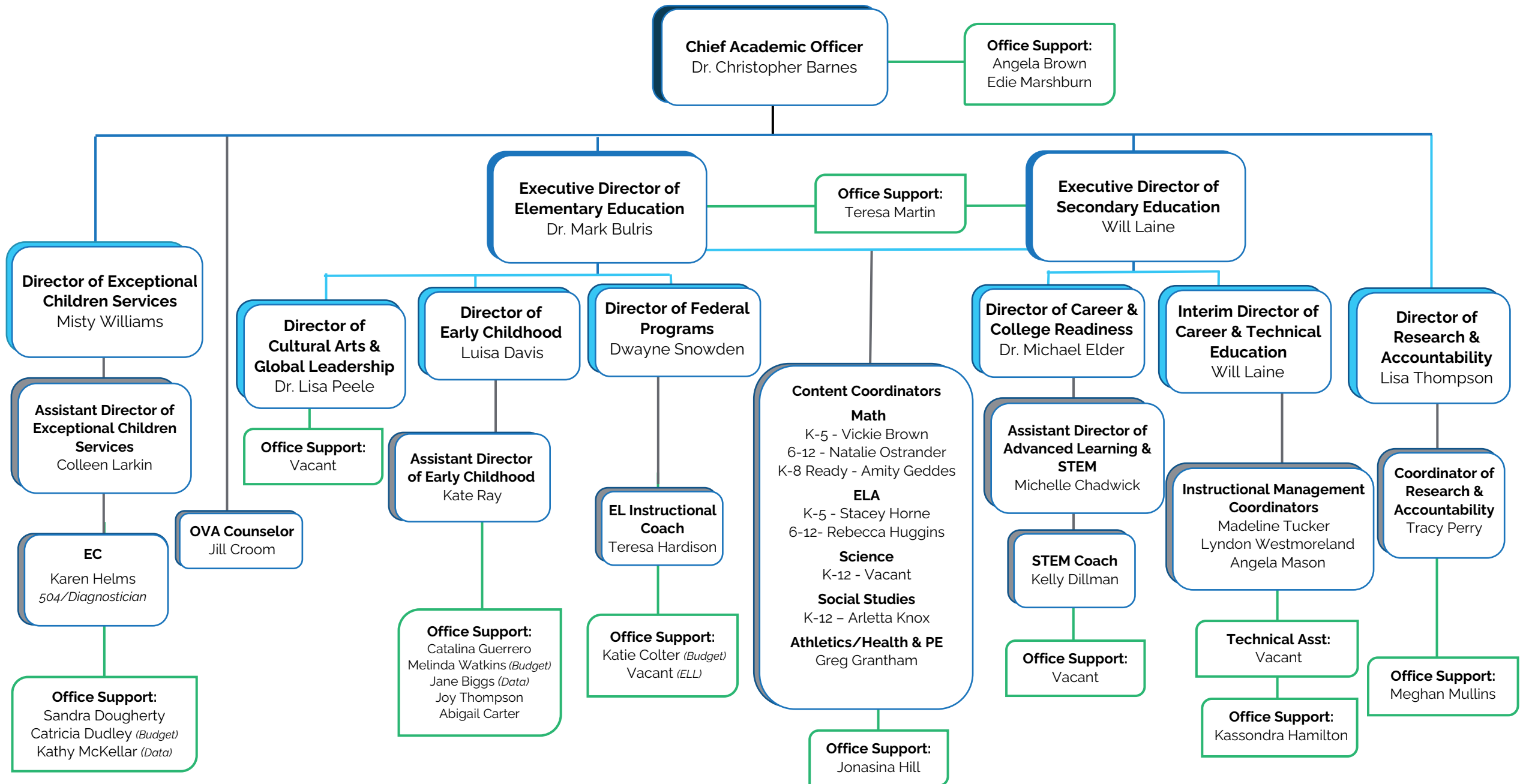


# 2023-2024 Instructional Services



**Chief Academic Officer**  
Dr. Christopher Barnes

**Office Support:**  
Angela Brown  
Edie Marshburn

**Executive Director of  
Elementary Education**  
Dr. Mark Bulris

**Office Support:**  
Teresa Martin

**Executive Director of  
Secondary Education**  
Will Laine

**Director of Exceptional  
Children Services**  
Misty Williams

**Assistant Director of  
Exceptional Children  
Services**  
Colleen Larkin

**EC**  
Karen Helms  
*504/Diagnostician*

**Office Support:**  
Sandra Dougherty  
Catricia Dudley (*Budget*)  
Kathy McKellar (*Data*)

**Director of  
Cultural Arts &  
Global Leadership**  
Dr. Lisa Peele

**Office Support:**  
Vacant

**Director of  
Early Childhood**  
Luisa Davis

**Assistant Director  
of Early Childhood**  
Kate Ray

**Office Support:**  
Catalina Guerrero  
Melinda Watkins (*Budget*)  
Jane Biggs (*Data*)  
Joy Thompson  
Abigail Carter

**Director of Federal  
Programs**  
Dwayne Snowden

**EL Instructional  
Coach**  
Teresa Hardison

**Office Support:**  
Katie Colter (*Budget*)  
Vacant (*ELL*)

**Content Coordinators**

**Math**  
K-5 - Vickie Brown  
6-12 - Natalie Ostrander  
K-8 Ready - Amity Geddes

**ELA**  
K-5 - Stacey Horne  
6-12- Rebecca Huggins

**Science**  
K-12 - Vacant

**Social Studies**  
K-12 - Arletta Knox

**Athletics/Health & PE**  
Greg Grantham

**Office Support:**  
Jonasina Hill

**Director of Career &  
College Readiness**  
Dr. Michael Elder

**Assistant Director of  
Advanced Learning &  
STEM**  
Michelle Chadwick

**STEM Coach**  
Kelly Dillman

**Office Support:**  
Vacant

**Interim Director of  
Career & Technical  
Education**  
Will Laine

**Instructional Management  
Coordinators**  
Madeline Tucker  
Lyndon Westmoreland  
Angela Mason

**Technical Asst:**  
Vacant

**Office Support:**  
Kassondra Hamilton

**Director of  
Research &  
Accountability**  
Lisa Thompson

**Coordinator of  
Research &  
Accountability**  
Tracy Perry

**Office Support:**  
Meghan Mullins