



2009 Bond Update



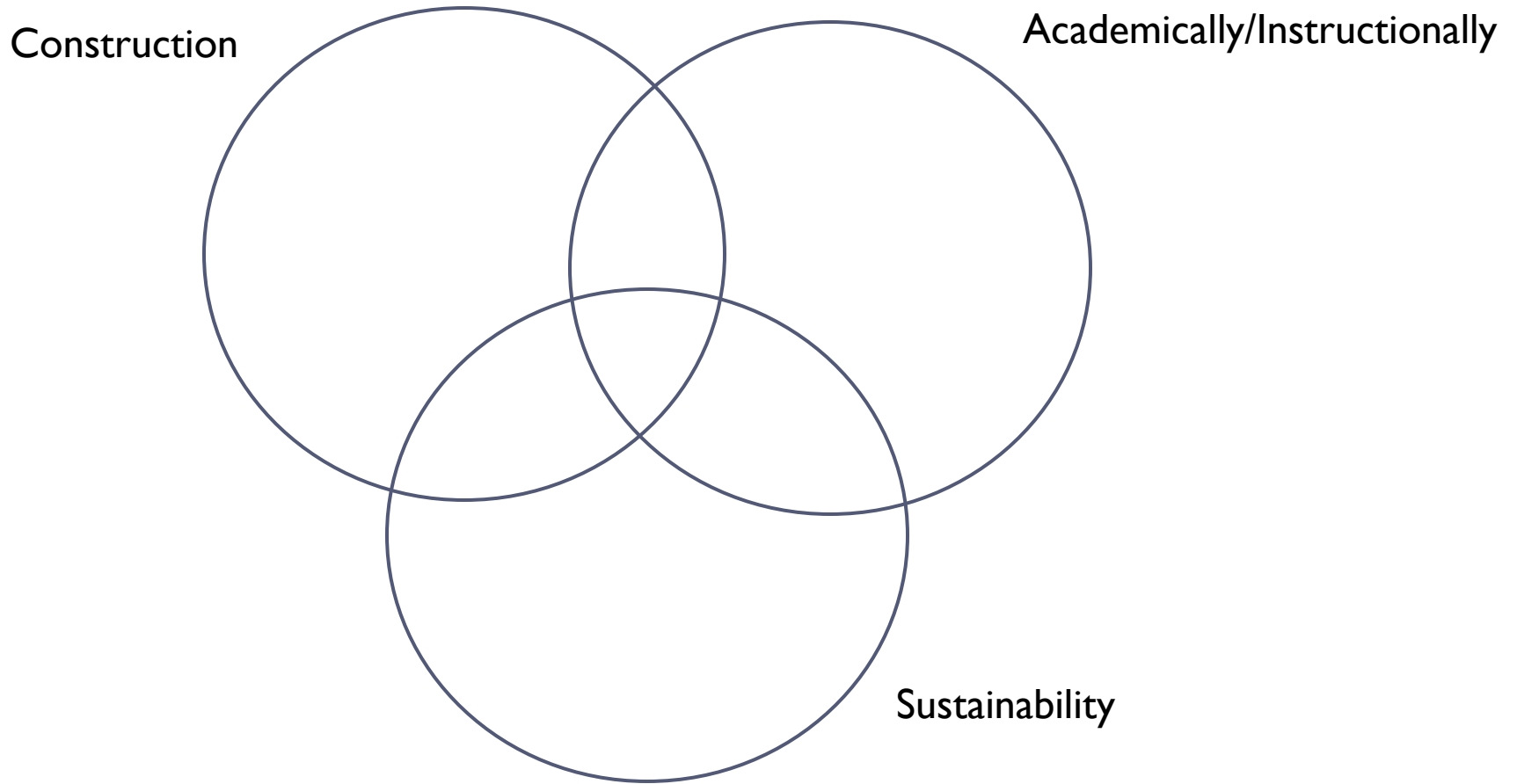
August 17, 2009

Goals for Design Development

- ▶ Our district's vision is one of
Success...each Life...each Day...each Hour
 - ▶ How do we measure success? We design facilities to be...
 - ▶ Successful Academically/Instructionally
 - ▶ The spaces enhance teachers' ability to teach and students' ability to learn
 - ▶ Successful Initial Facility
 - ▶ In line with the community's standards and expectations
 - ▶ Fiscally responsible
 - ▶ Successful for the Long Term
 - ▶ Sustainability
 - ▶ Operationally/Utilities
 - ▶ Flexibility
-



Design Development



Support Services Facility

- ▶ Scheduled to open – August 2010
- ▶ GMP scheduled for Board approval – November 2009
- ▶ Updated Site Plan
 - ▶ Rock Prairie Road
 - ▶ Deceleration Lane
 - ▶ Two curb cuts
 - ▶ Adjusted the parking
- ▶ 50% Drawings
- ▶ Elevations





8/12/2009 8:47:12 AM

FOR REVIEW
NOT FOR
REGULATORY
APPROVAL,
PERMITTING, OR
CONSTRUCTION

CHECKED: **Checker**
SCALE: **1" = 50'-0"**
© 2009 SHW Group

SHEET TITLE:
ENLARGED SITE PLAN NE

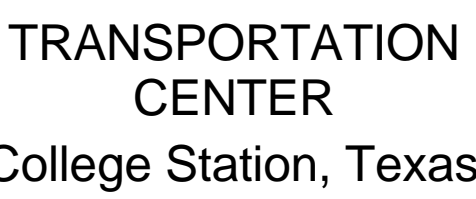
SHW Project: 4409.011.00



8/12/2009 8:47:12 AM
C:\Revit Local Files\40901100 College Station Transportation Center_A09.asaladino.rvt

FOR REVIEW
NOT FOR
REGULATORY
APPROVAL,
PERMITTING, OR
CONSTRUCTION

**College Station
Independent School
District**

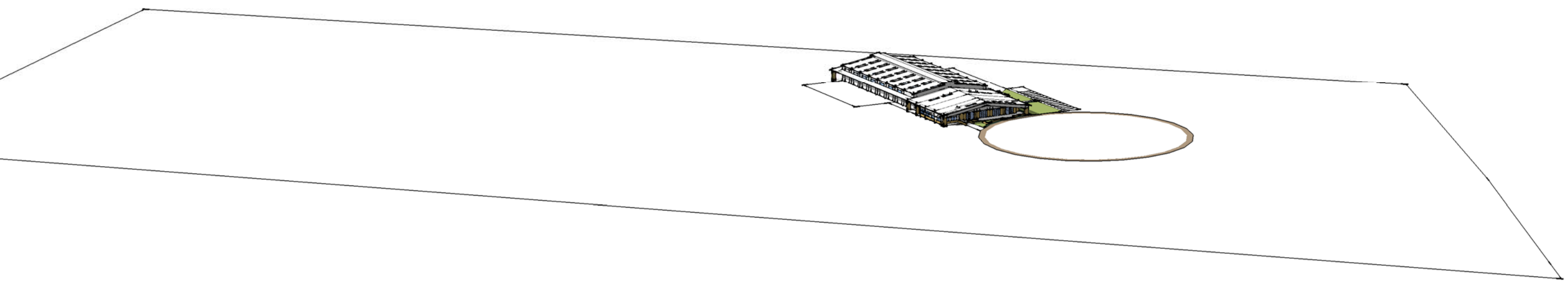


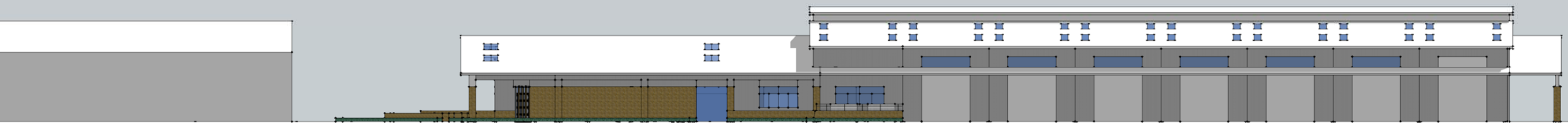
ISSUE:

SHEET TITLE:
ENLARGED SITE PLAN SW

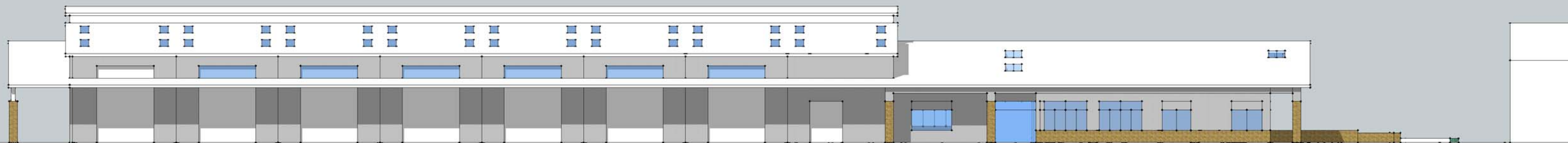
HW Project: 4409.011.00



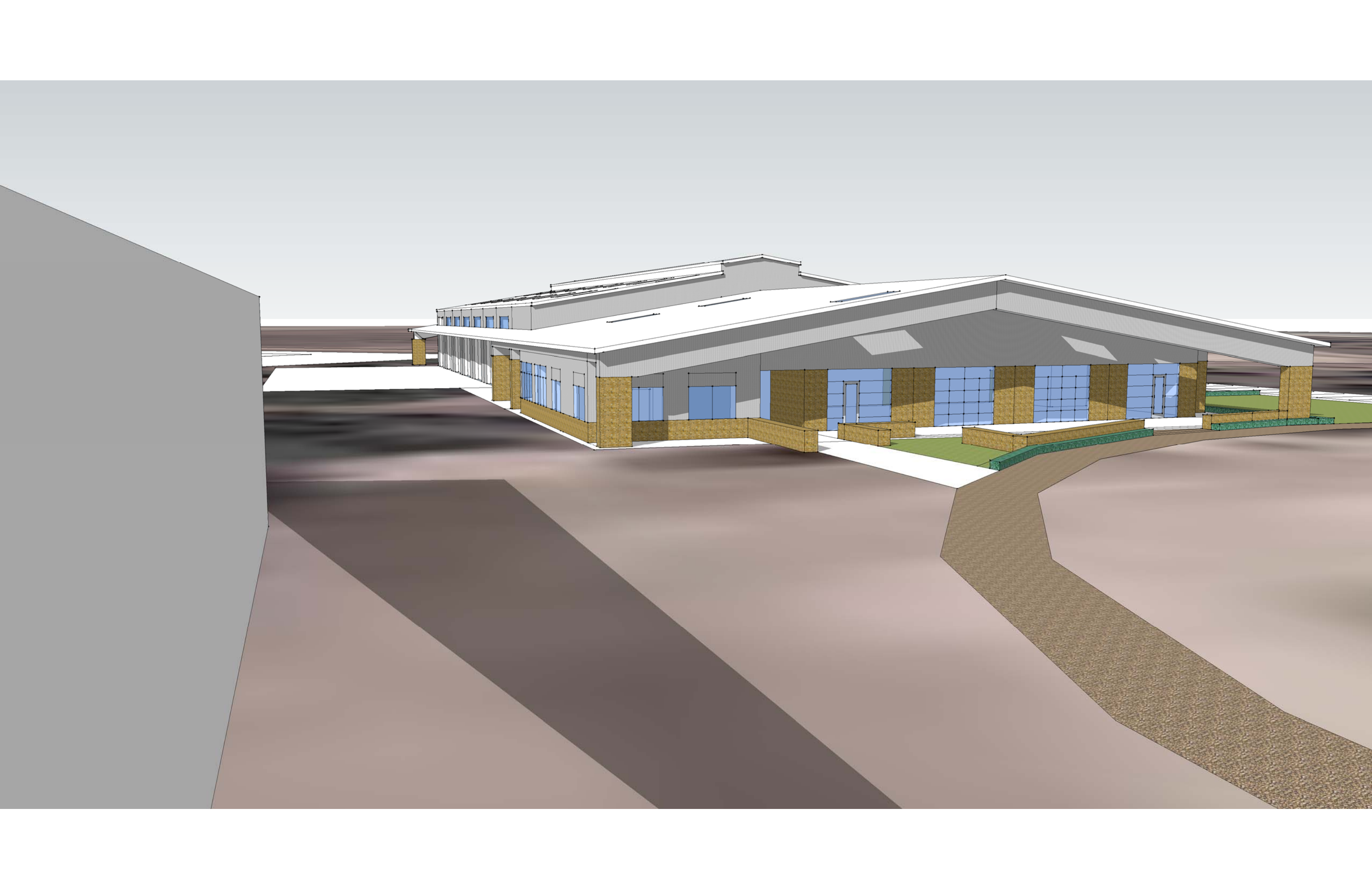


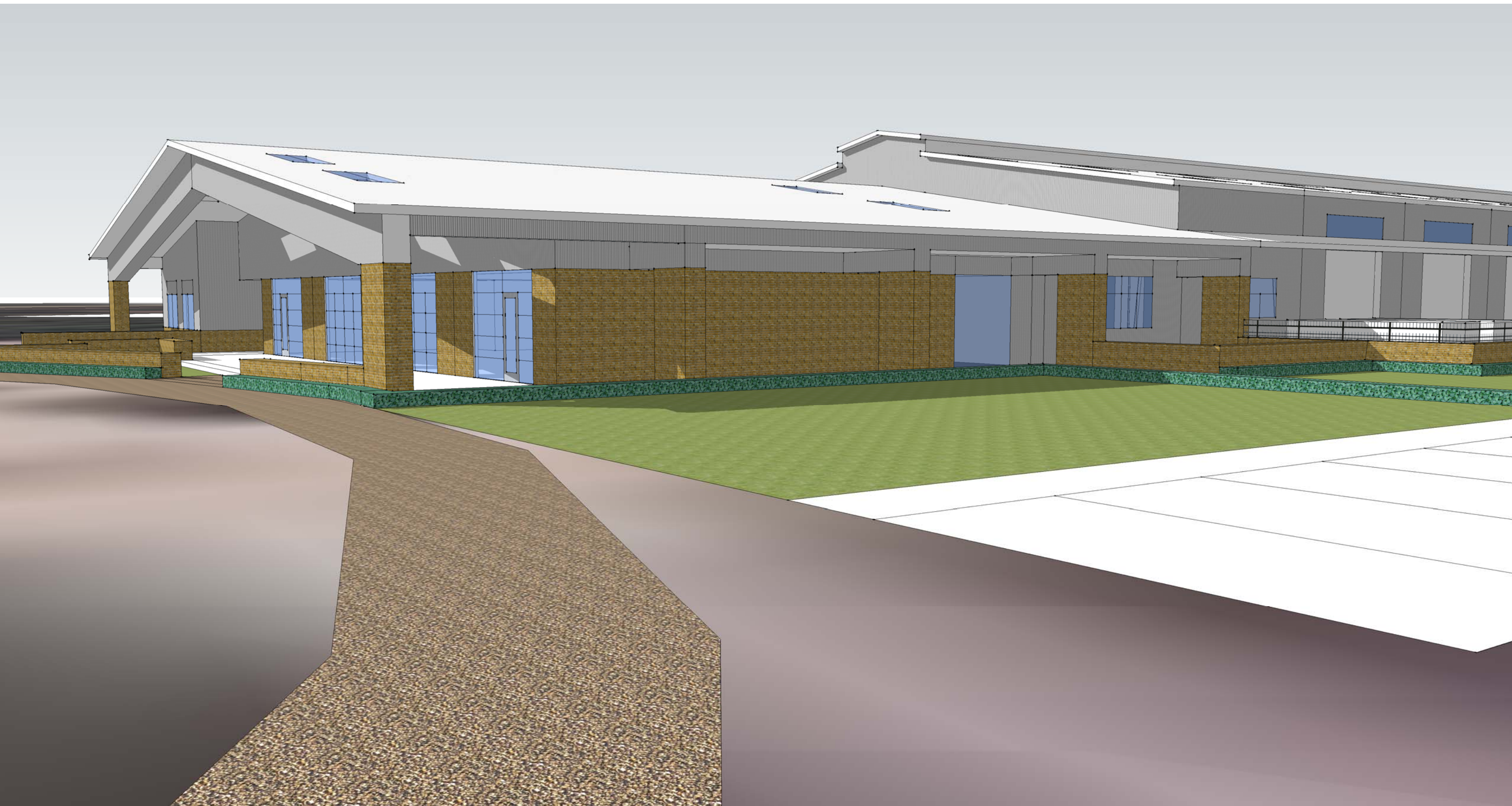


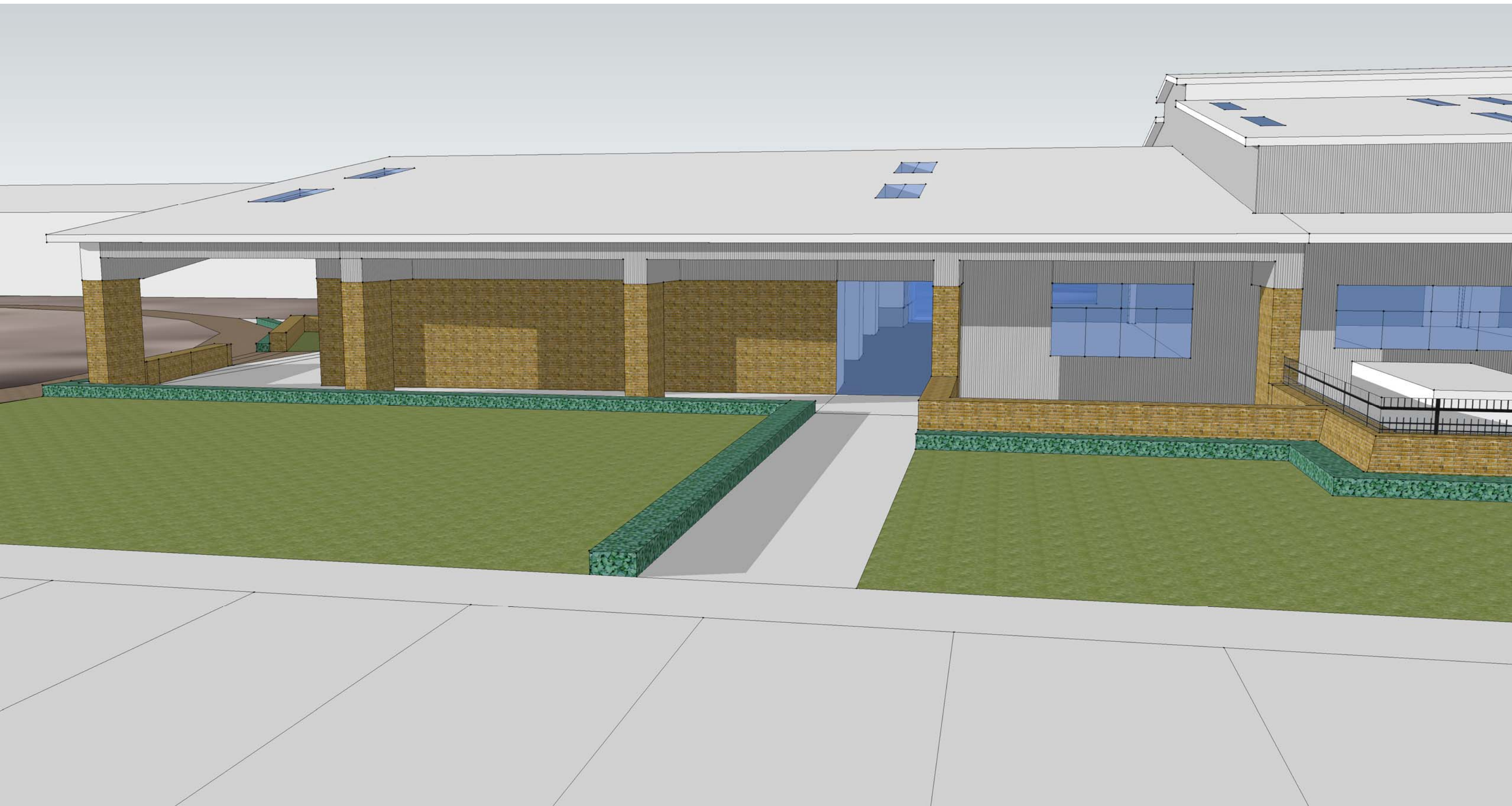




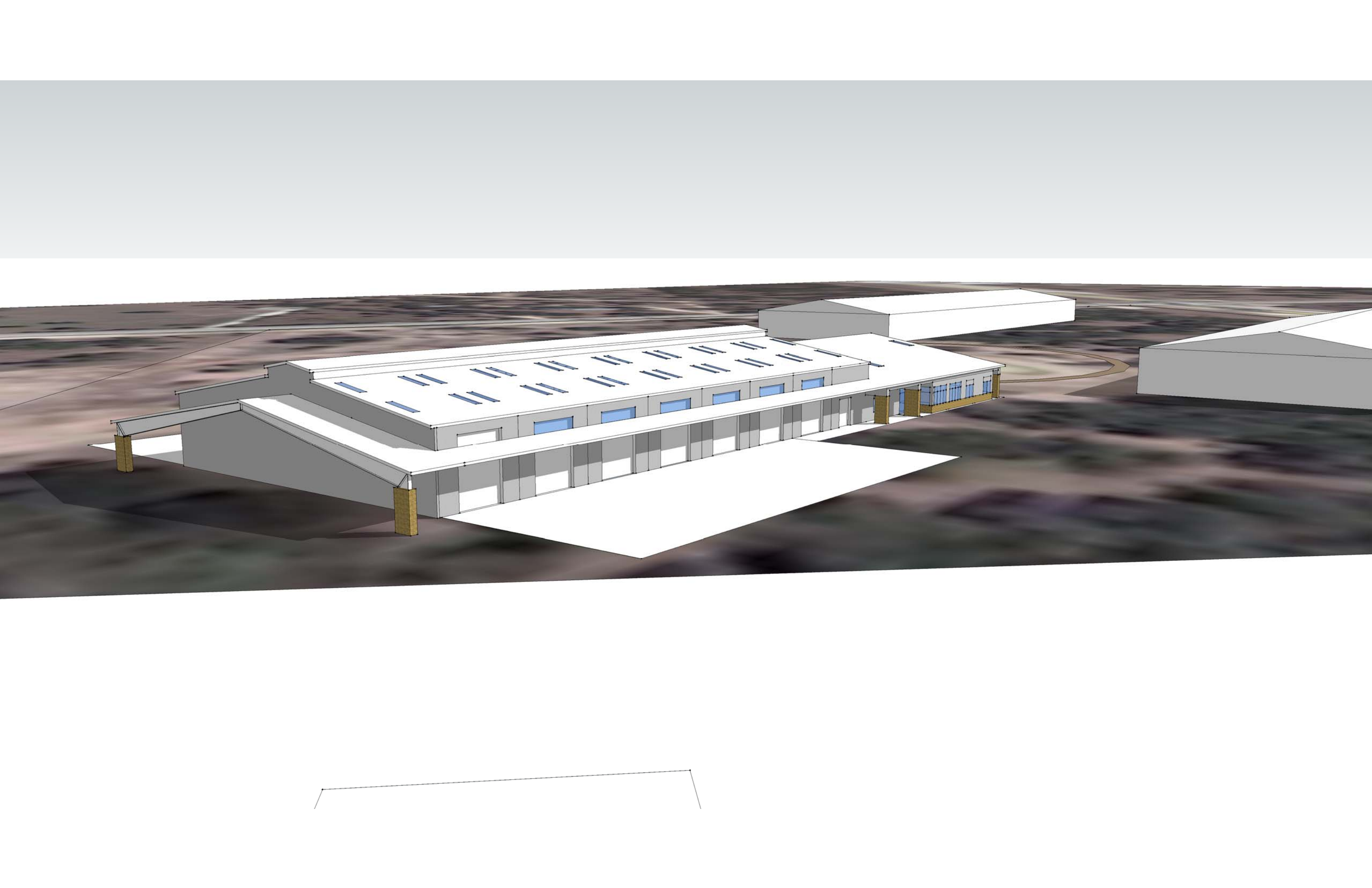












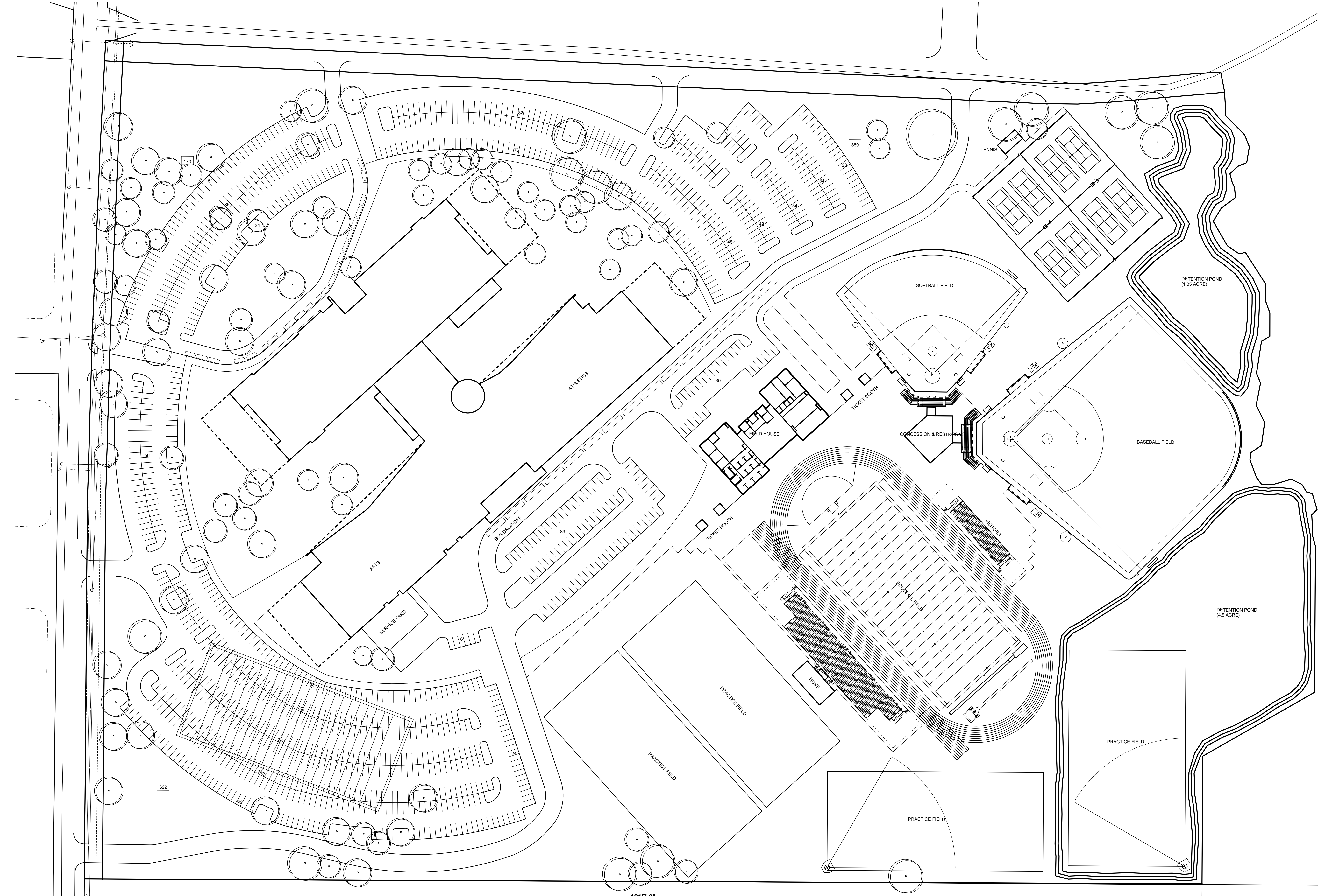
College Station High School

- ▶ Scheduled to open – August 2012
 - ▶ GMP for site work and utility infrastructure – November 2009
 - ▶ Updated Site Plan
 - ▶ Athletic Facilities
 - ▶ Parking
 - ▶ Bus Lane
 - ▶ Programming curricular areas inside the main building
 - ▶ Materials of construction
 - ▶ Masonry, glass and steel
 - ▶ Looking at ways to minimize utilities
-



8/14/2009 4:35:41 PM
C:\Revit Local Files\44091200 College Station HS_A09.aparlet.rvt

A1 SITE PLAN
1/64" = 1'-0"



SHWGROUP
ARCHITECTS | ENGINEERS | PLANNERS
20 E GREENWAY PLAZA, #200, HOUSTON, TX 77046

8/14/2009 4:35:41 PM
**FOR REVIEW
NOT FOR
REGULATORY
APPROVAL,
PERMITTING, OR
CONSTRUCTION**

COLLEGE STATION ISD



**COLLEGE STATION HIGH
SCHOOL
COLLEGE STATION, TX**

CHECKED: Checker
SCALE: 1/64" = 1'-0"
© 2009 SHW Group

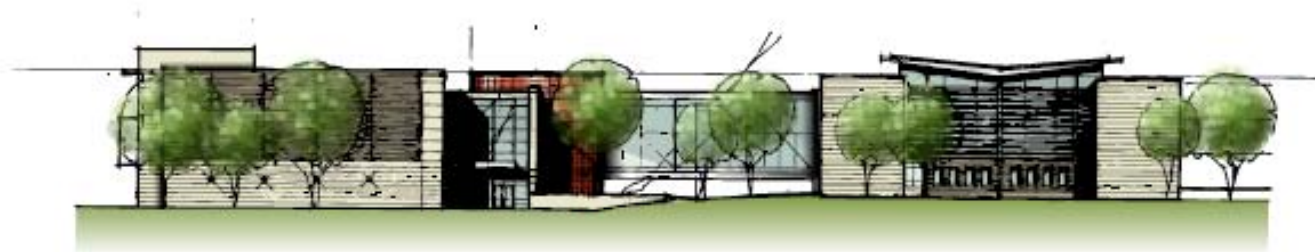
ISSUE:

**SHEET TITLE:
ARCHITECTURAL SITE
PLAN**

AS01
4409.012.00

SHW Project:

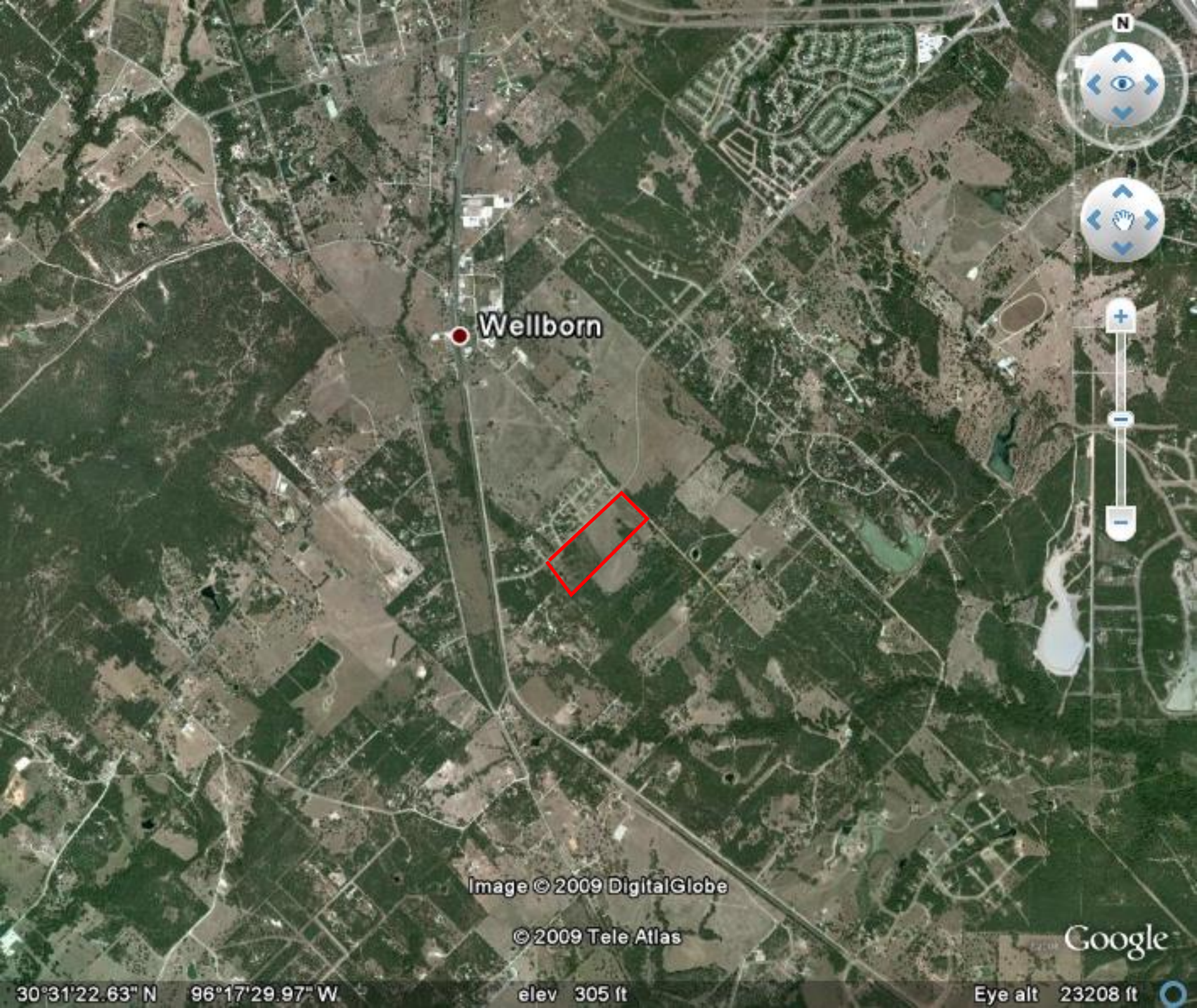




Elementary #8 – Site Development

- ▶ Looking at the ability to put two facilities on the same parcel
- ▶ Designing for flexibility in the future
- ▶ Maximizing energy efficiency by orienting the building north and south
- ▶ Utilizing grove of trees on the site





Wellborn

Image © 2009 DigitalGlobe

© 2009 Tele Atlas

Google

30°31'22.63" N 96°17'29.97" W

elev 305 ft

Eye alt 23208 ft



N

Image © 2009 DigitalGlobe
© 2009 Tele Atlas

Google

30°31'13.93" N 96°17'31.52" W

elev 303 ft

Sep 13, 2006

Eye alt 2757 ft






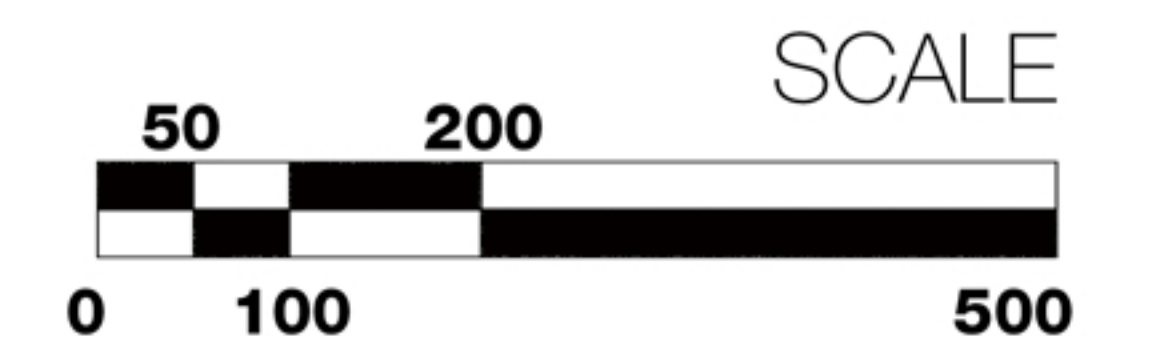


EXISTING SITE
NEW ELEMENTARY & INTERMEDIATE SCHOOL
WELLBORN, TX






SITE PLAN
COLLEGE STATION I.S.D.
WELLBORN, TX

-  BUILDING LOCATION
-  SITE DRIVES
-  PLAYGROUNDS



Prototype Elementary & Intermediate School
College Station I.S.D. WELLBORN, TEXAS

SITE PLAN
COLLEGE STATION I.S.D.
WELLBORN, TX

-  BUILDING LOCATION
-  SITE DRIVES
-  PLAYGROUNDS

NEW ELEMENTARY SCHOOL
 WELLBORN, TX

SCALE
 1/32" = 1'-0"



V L K | P R E L I M I N A R Y D E S I G N



Prototype Elementary & Intermediate School
 College Station I.S.D. WELLBORN, TEXAS

08.17.2009



ARCHITECTS
 2920.00 | A

Questions / Comments

