

2009 BOND UPDATE

February 16, 2010

Support Services Facility

- We are being slowed severely by all the rain.
- Pond continues to refill, needs to be mucked out.
- City of College Station Actions
 - ▣ Added an additional 18" Valve on our property next to water tie in (\$8,800)
 - ▣ Changed ordinance related to trees (\$27,000)
 - Request in November, Approval in December
 - We've been very public about our willingness to keep 100 plus feet of visual buffer from William D. Fitch

Support Services Facility



- Project is still under budget and on schedule, for now.
- New 18" water line valve and 12" water line tap has been installed.
- This is a view across the site where the building will eventually sit. In the foreground is a view of the backfill where the new 18" water valve is located.

Support Services Facility

- This is a view looking back across the site from the William D. Fitch side.
- You can see the pile of trees and brush piled up in the background where clearing and grubbing is still ongoing.



Greens Prairie Elementary

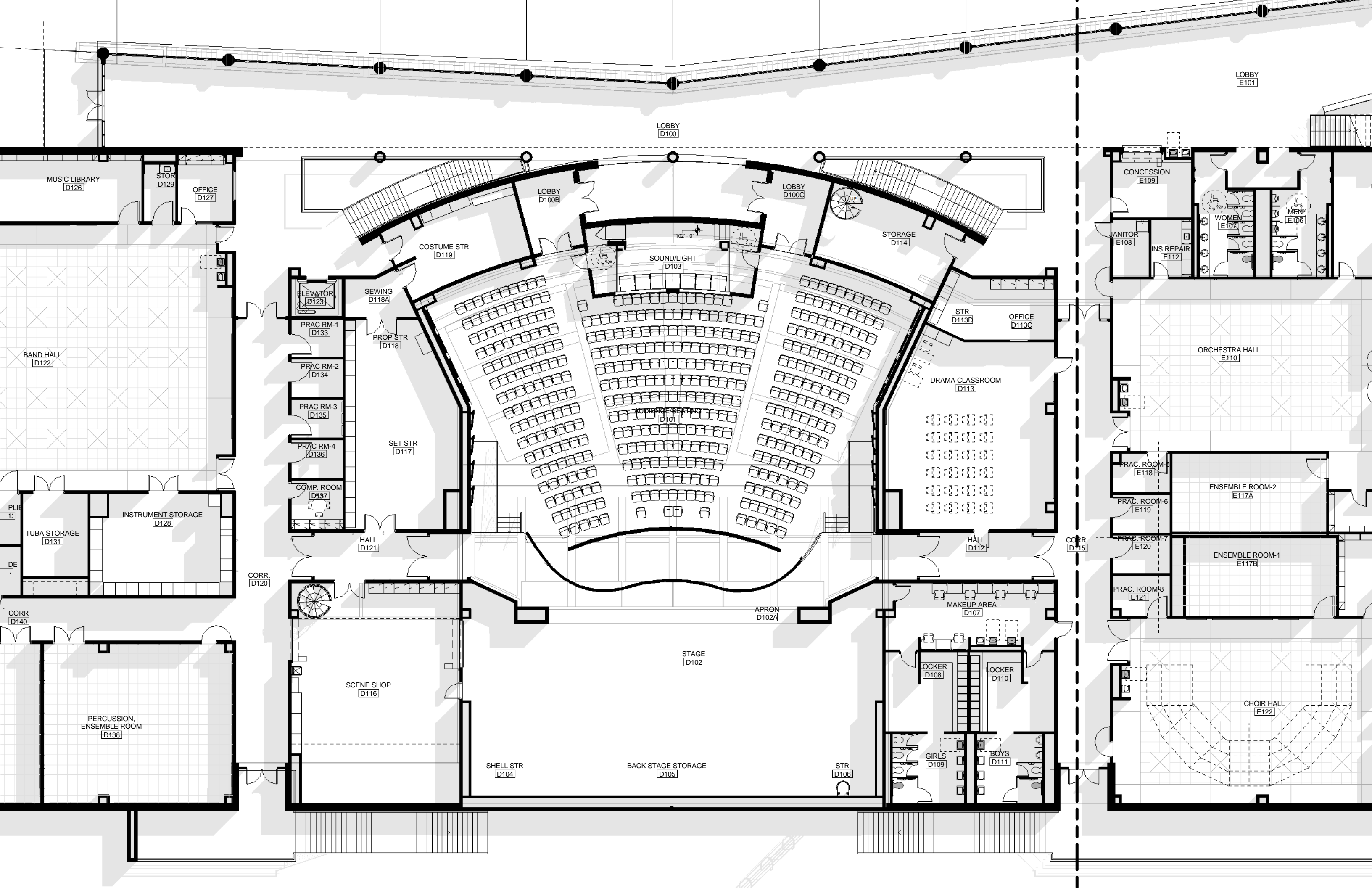
- City Council approved our application for Annexation for this property (1/14/10)
 - ▣ We have not heard yet from the City on an initial draft of the service plan for this area
 - ▣ Capacity at the lift station across Royder Road
- Construction Documents (CD) are being created
- Tracking for a May 2010 GMP for the Board

College Station High School

- City of College Station projects
 - ▣ Barron Road widening
 - City needs additional 551 square feet
 - Resolution to dedicate ROW to the city?
 - ▣ Signal at Barron and Victoria
 - City will want us to participate
 - ~\$250,000
 - ▣ Victoria Avenue widening
 - City will be making a fair market offer for our property for this project
 - We have been asked if we would dedicate that land as well

College Station High School

- Three tiered Guaranteed Maximum Price (GMP)
 - ▣ Package B (Utility Infrastructure)
 - 100% Review is complete
 - Bids on the street
 - Tracking for March GMP to the Board
 - ▣ Package C (Balance of the project)
 - Still reworking design elements
 - CATE – Ag, Construction Science and Culinary Arts
 - Gymnasium
 - Auditorium – Images tonight



LOBBY
E101

LOBBY
D100

LOBBY
D100B

LOBBY
D100C

COSTUME STR
D119

SOUND/LIGHT
D103

STORAGE
D114

ELEVATOR
D123

SEWING
D118A

PRAC RM-1
D133

PROP STR
D118

PRAC RM-2
D134

PRAC RM-3
D135

PRAC RM-4
D136

COMP. ROOM
D137

SET STR
D117

HALL
D121

CORR.
D120

SCENE SHOP
D116

STAGE
D102

APRON
D102A

MAKEUP AREA
D107

LOCKER
D108

LOCKER
D110

GIRLS
D109

BOYS
D111

SHELL STR
D104

BACK STAGE STORAGE
D105

STR
D106

CONCESSION
E109

JANITOR
E108

INS.REPAIR
E112

WOMEN
E107

MEN
E106

ORCHESTRA HALL
E110

PRAC. ROOM-5
E118

PRAC. ROOM-6
E119

PRAC. ROOM-7
E120

PRAC. ROOM-8
E121

ENSEMBLE ROOM-2
E117A

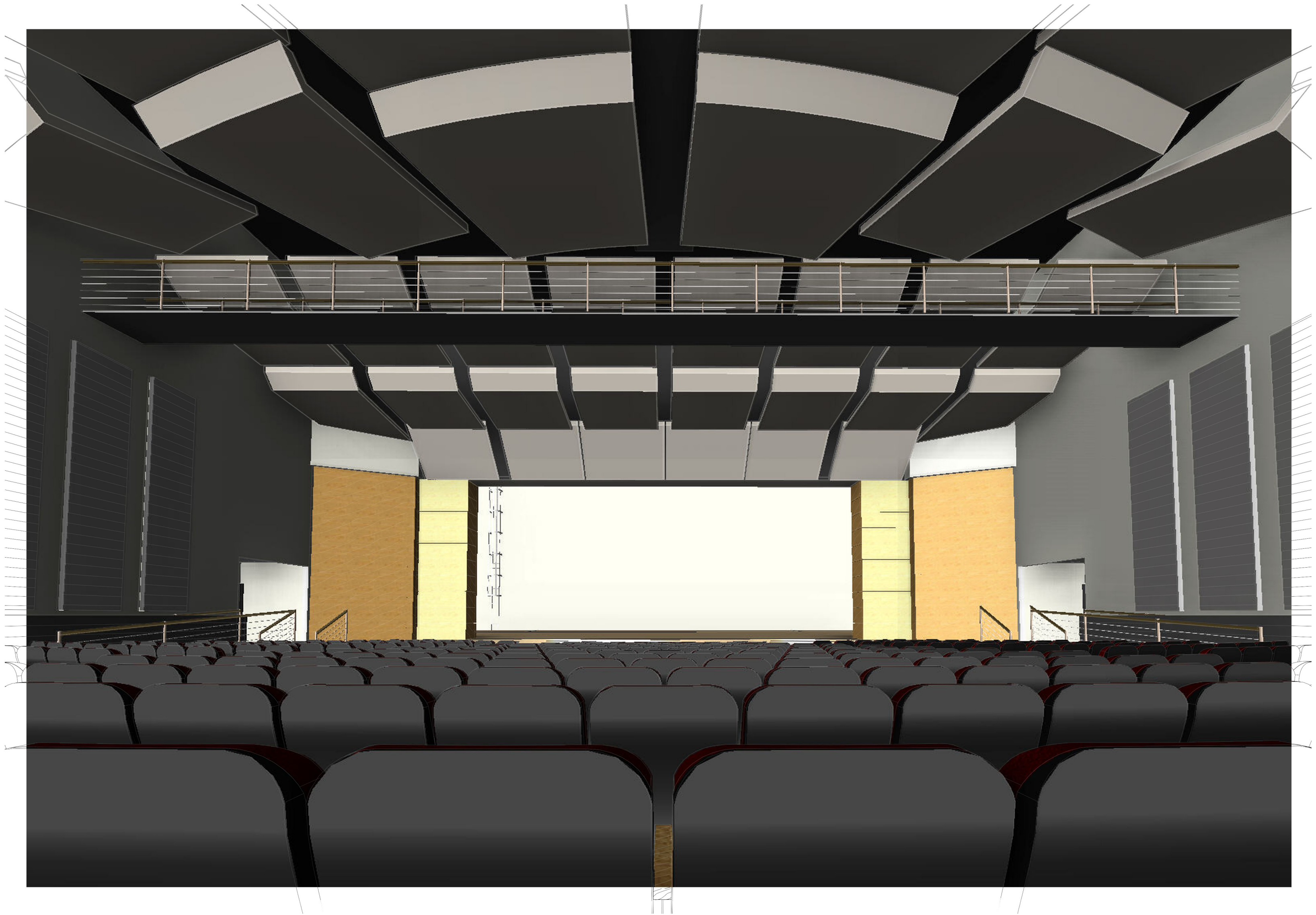
ENSEMBLE ROOM-1
E117B

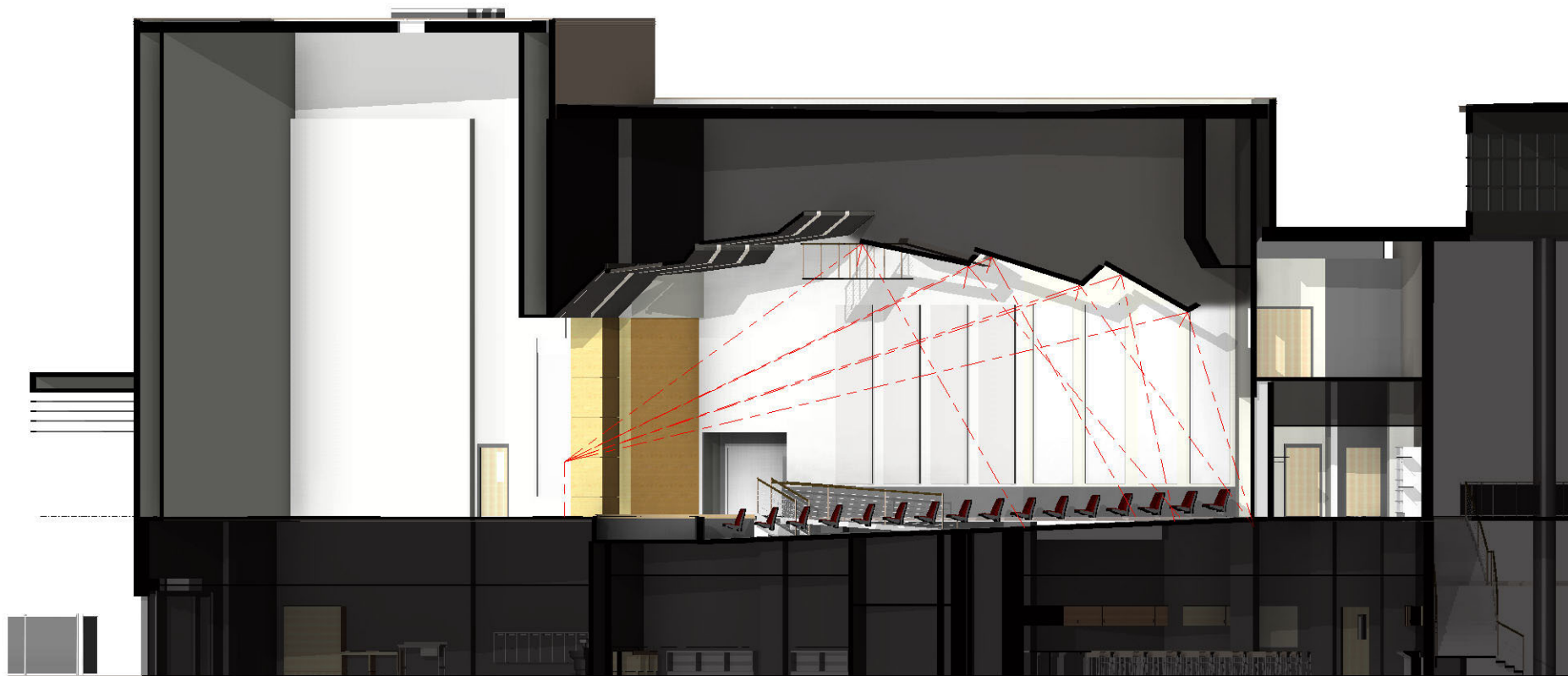
CHOIR HALL
E122













Questions/Comments?