

2009 BOND UPDATE

January 19, 2010

Support Services Facility

- Approved GMP and total project budget on 12/2/09.
- Some tree clearing and grubbing has begun.
- Permit was received from the City of College Station last Friday.
- PCHOA meeting with City of College Station 12/18/09.

Support Services Facility



- This is a view of the construction access drive at Rock Prairie Road with project sign. You can see some of the tree protection orange fencing in the background.
- Tree protection and silt fencing for the Storm Water Pollution Prevention Plan has been installed.
- Site mobilization has started for temporary signage

Support Services Facility

- This is a view across the site towards the water stock tank. It is being drained down in preparation for being filled



Greens Prairie Elementary

- City Council approved our application for Annexation for this property (1/14/10)
 - ▣ This only starts the process
 - Service Agreement
 - 2 public hearings
 - Passing ordinance
 - ▣ Comments from Council Members on the cost associated with annexation without city's ability to generate tax revenue

Greens Prairie Elementary

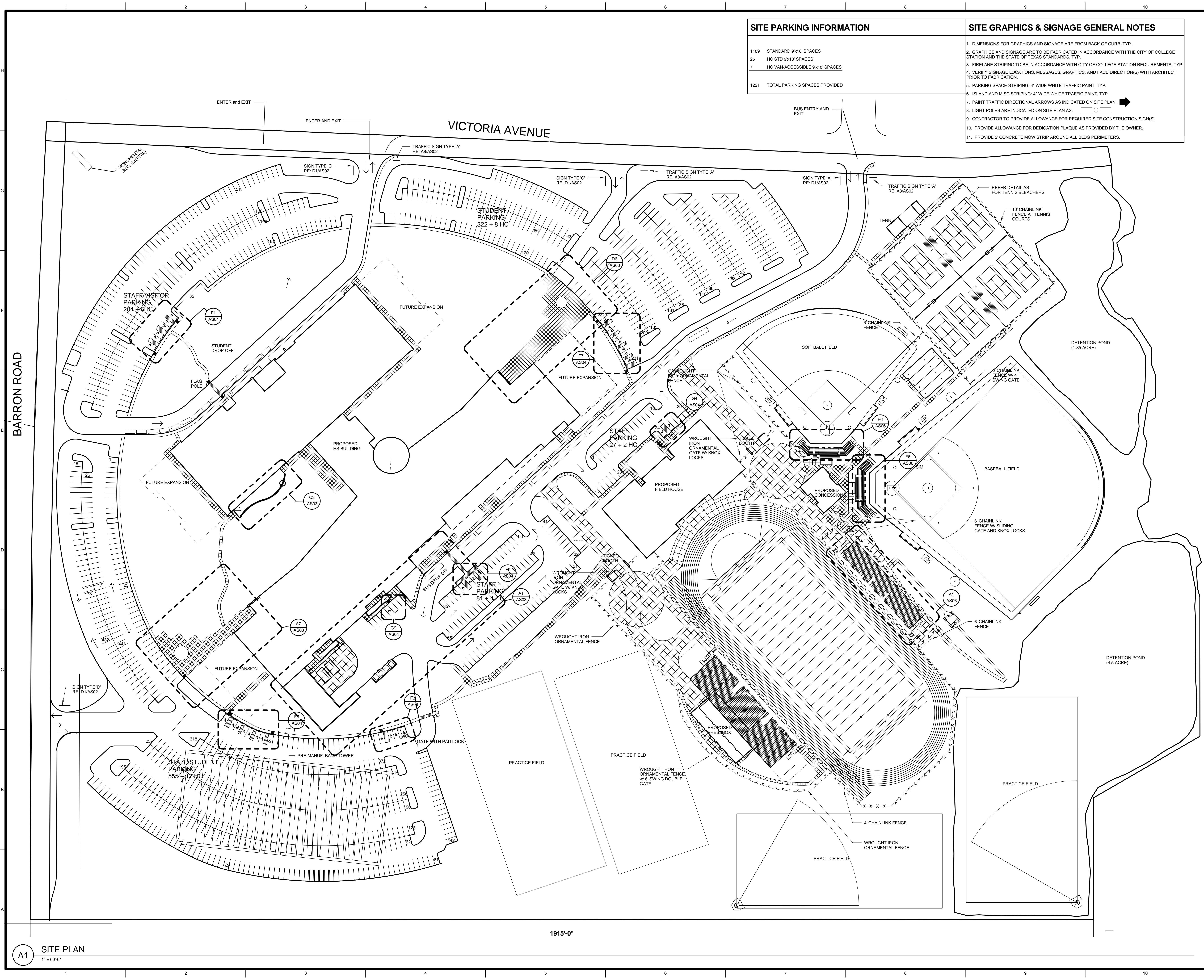
- Tracking for an April GMP to the board.
- Studying the sewer issues in the area, could be tied into the service agreement
- Roads and Intersection
 - ▣ Studying the 4-way stop/Signal at Greens Prairie Trail and Royder Road
 - ▣ Road responsibility adjacent to the tract


College Station High School

- City of College Station projects
 - ▣ Barron Road widening
 - City needs additional 551 square feet
 - ▣ Victoria Avenue widening
 - Various issues involved
- Three tiered Guaranteed Maximum Price (GMP)
 - ▣ Tonight the board will consider GMP for Package A for Site Clearing and Grubbing
 - ▣ March – Package B (Utility Infrastructure)
 - ▣ April – Package C (Balance of the project)

College Station High School

- Site Plan Changes
 - ▣ Bus Traffic – In and out from Victoria
 - ▣ 1 Curb Cut on Barron
 - Deceleration lane
 - Cueing for left turn into school
 - ▣ Working on Fencing and Gating
- Landscaping Plan
 - ▣ Saving existing trees
 - ▣ New Trees and Plants
 - ▣ 12” Tree Trunks saved for use in the school



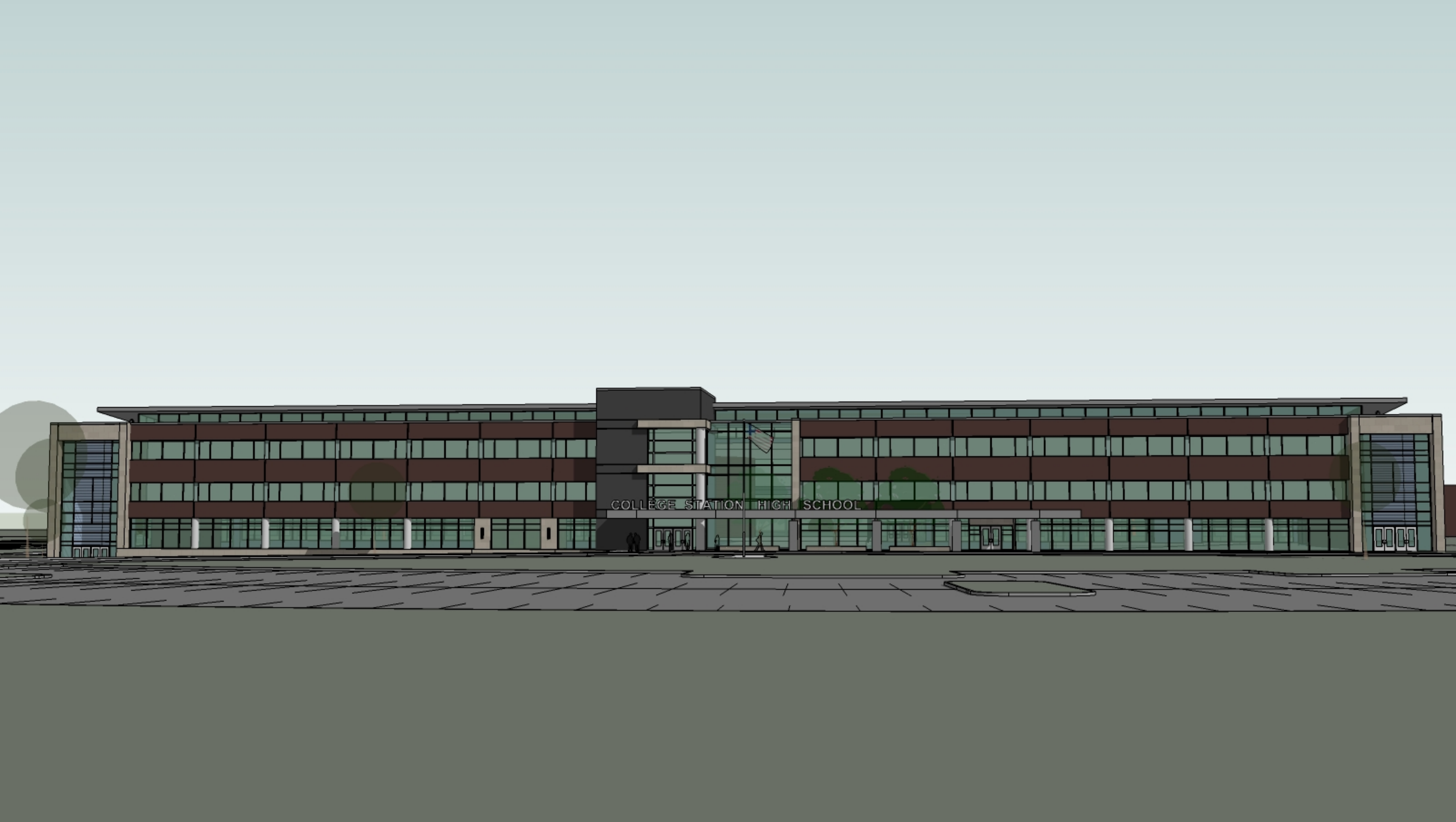
SITE PARKING INFORMATION	SITE GRAPHICS & SIGNAGE GENERAL NOTES
1189 STANDARD 9'x18' SPACES 25 HC STD 9'x18' SPACES 7 HC VAN-ACCESSIBLE 9'x18' SPACES 1221 TOTAL PARKING SPACES PROVIDED	1. DIMENSIONS FOR GRAPHICS AND SIGNAGE ARE FROM BACK OF CURB, TYP. 2. GRAPHICS AND SIGNAGE ARE TO BE FABRICATED IN ACCORDANCE WITH THE CITY OF COLLEGE STATION AND THE STATE OF TEXAS STANDARDS, TYP. 3. FIRELANE STRIPING TO BE IN ACCORDANCE WITH CITY OF COLLEGE STATION REQUIREMENTS, TYP. 4. VERIFY SIGNAGE LOCATIONS, MESSAGES, GRAPHICS, AND FACE DIRECTION(S) WITH ARCHITECT PRIOR TO FABRICATION. 5. PARKING SPACE STRIPING: 4" WIDE WHITE TRAFFIC PAINT, TYP. 6. ISLAND AND MISC STRIPING: 4" WIDE WHITE TRAFFIC PAINT, TYP. 7. PAINT TRAFFIC DIRECTIONAL ARROWS AS INDICATED ON SITE PLAN. 8. LIGHT POLES ARE INDICATED ON SITE PLAN AS:  9. CONTRACTOR TO PROVIDE ALLOWANCE FOR REQUIRED SITE CONSTRUCTION SIGN(S) 10. PROVIDE ALLOWANCE FOR DEDICATION PLAQUE AS PROVIDED BY THE OWNER. 11. PROVIDE 2' CONCRETE MOW STRIP AROUND ALL BLDG PERIMETERS.

College Station High School

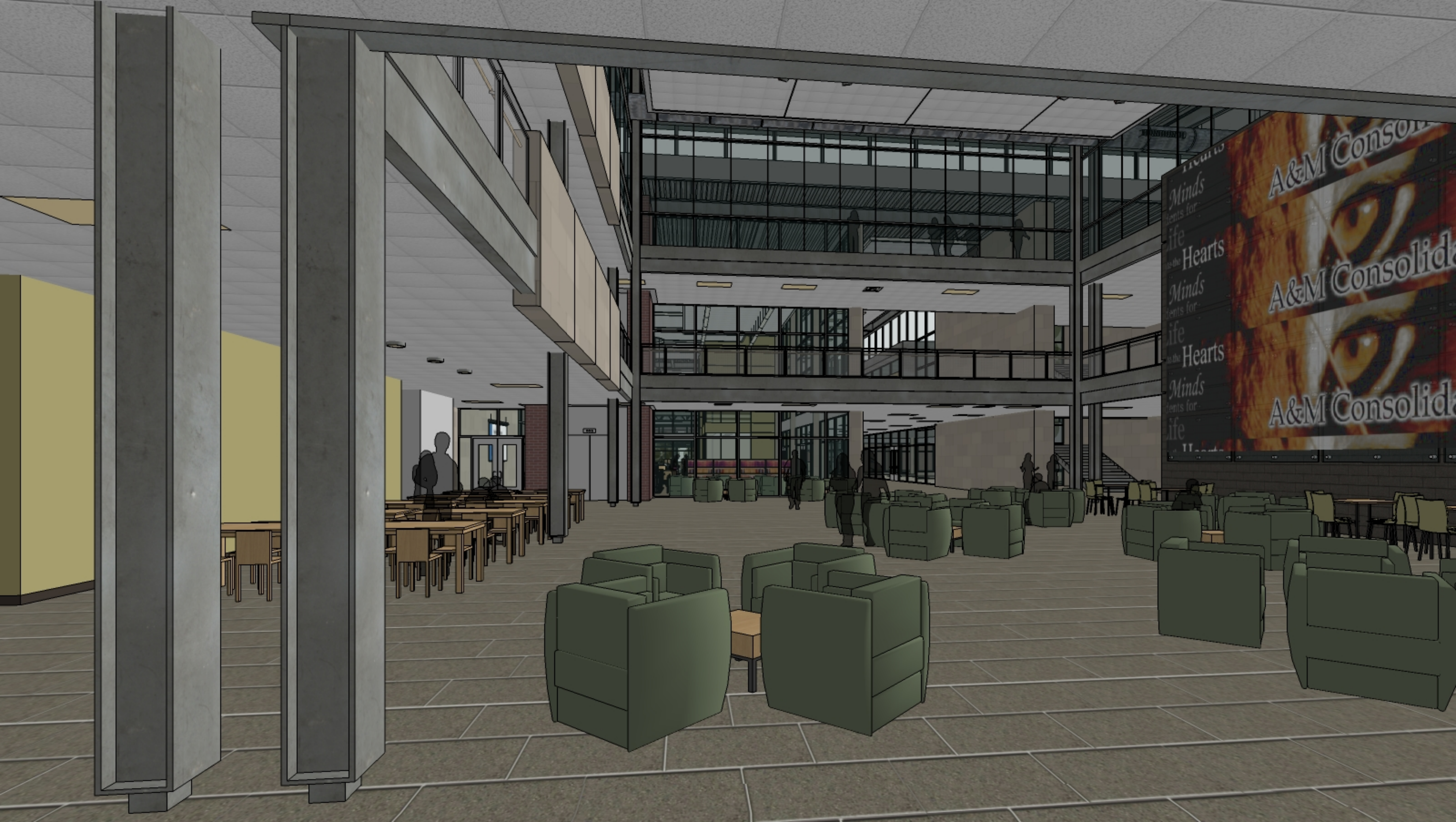
- Changes to the front elevation
 - ▣ Main entrance
 - ▣ Front conference room
- Student commons space
 - ▣ Reduced 5000 sf
 - ▣ Wall on one side – Focal point
- Gym
 - ▣ Reduced amount of glass on each end
- Classroom hallways
 - ▣ Reduced glass around doors

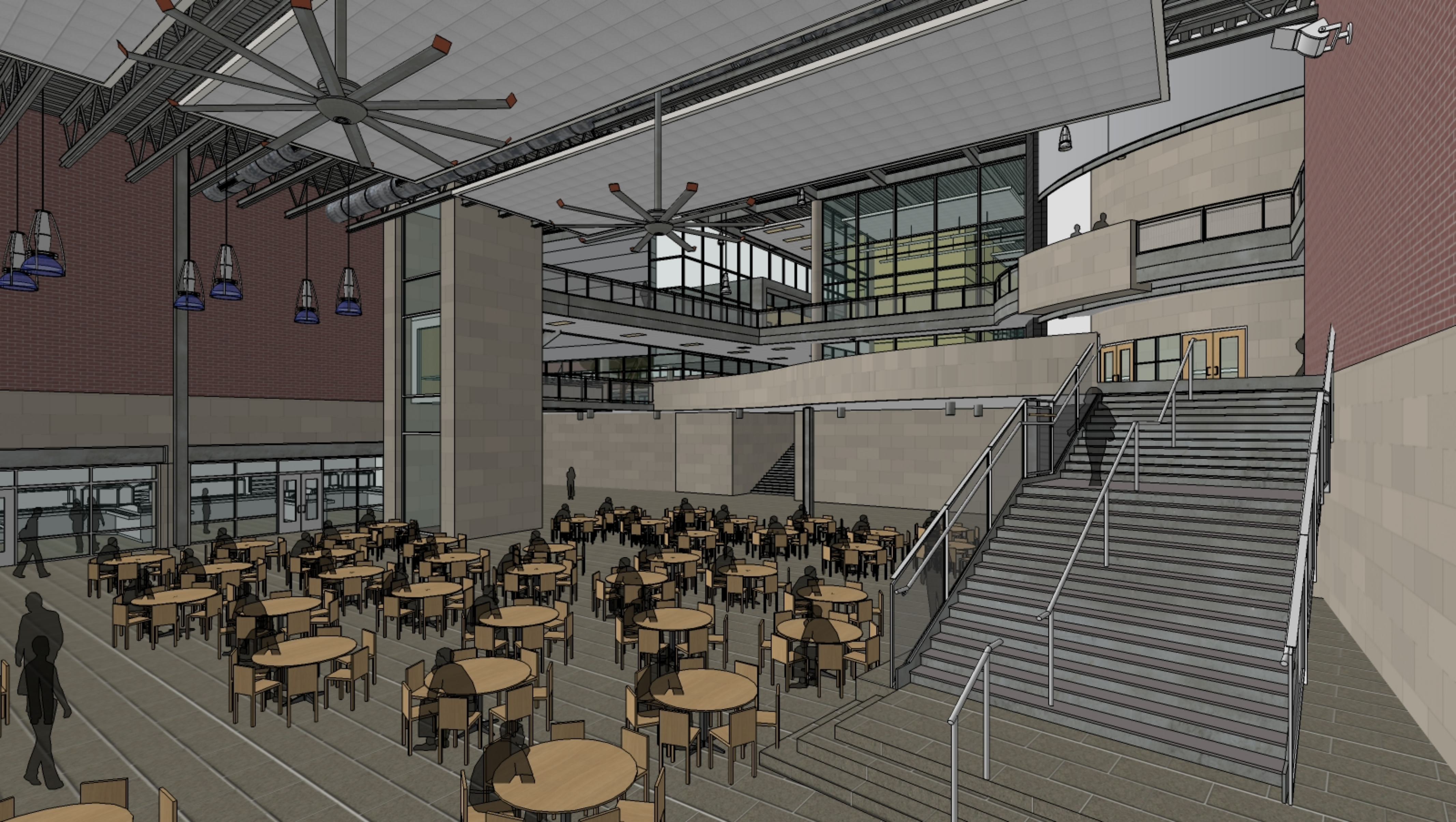


COLLEGE STATION HIGH SCHOOL



















Questions/Comments?