



2009 Bond Update



October 20, 2009

Support Services Facility

- ▶ Scheduled to open – August 2010
- ▶ Need a special board meeting on or about December 1st for the GMP
- ▶ Recent Revisions
 - ▶ Revised bus parking
 - ▶ Eliminated one bay (alternate) and moved wash bay to near the fuel pumps
 - ▶ Reduced the size of training room and realigned
 - ▶ Two 75 person halves
- ▶ Drawings are on the street



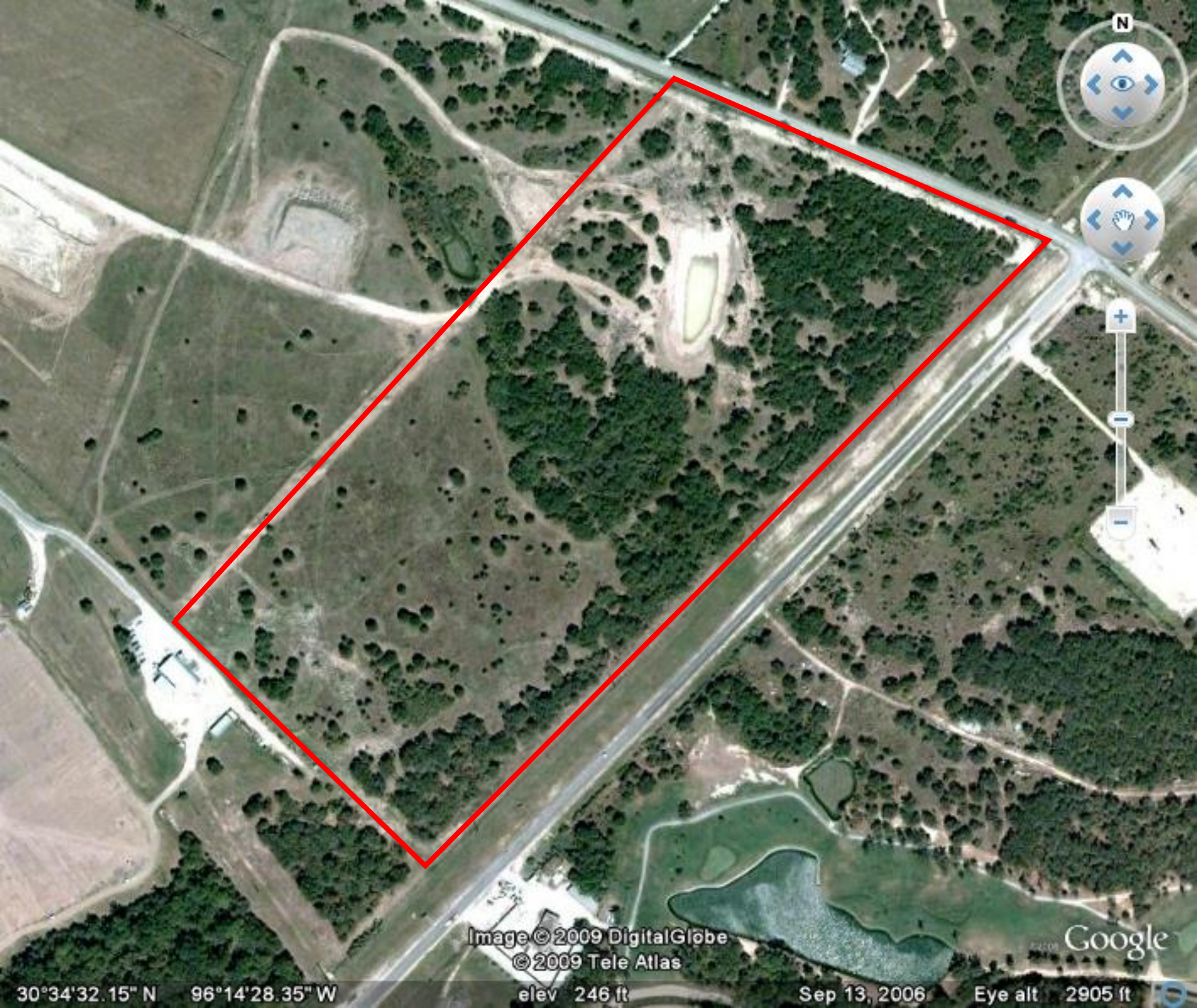


Image © 2009 DigitalGlobe
© 2009 Tele Atlas

Google

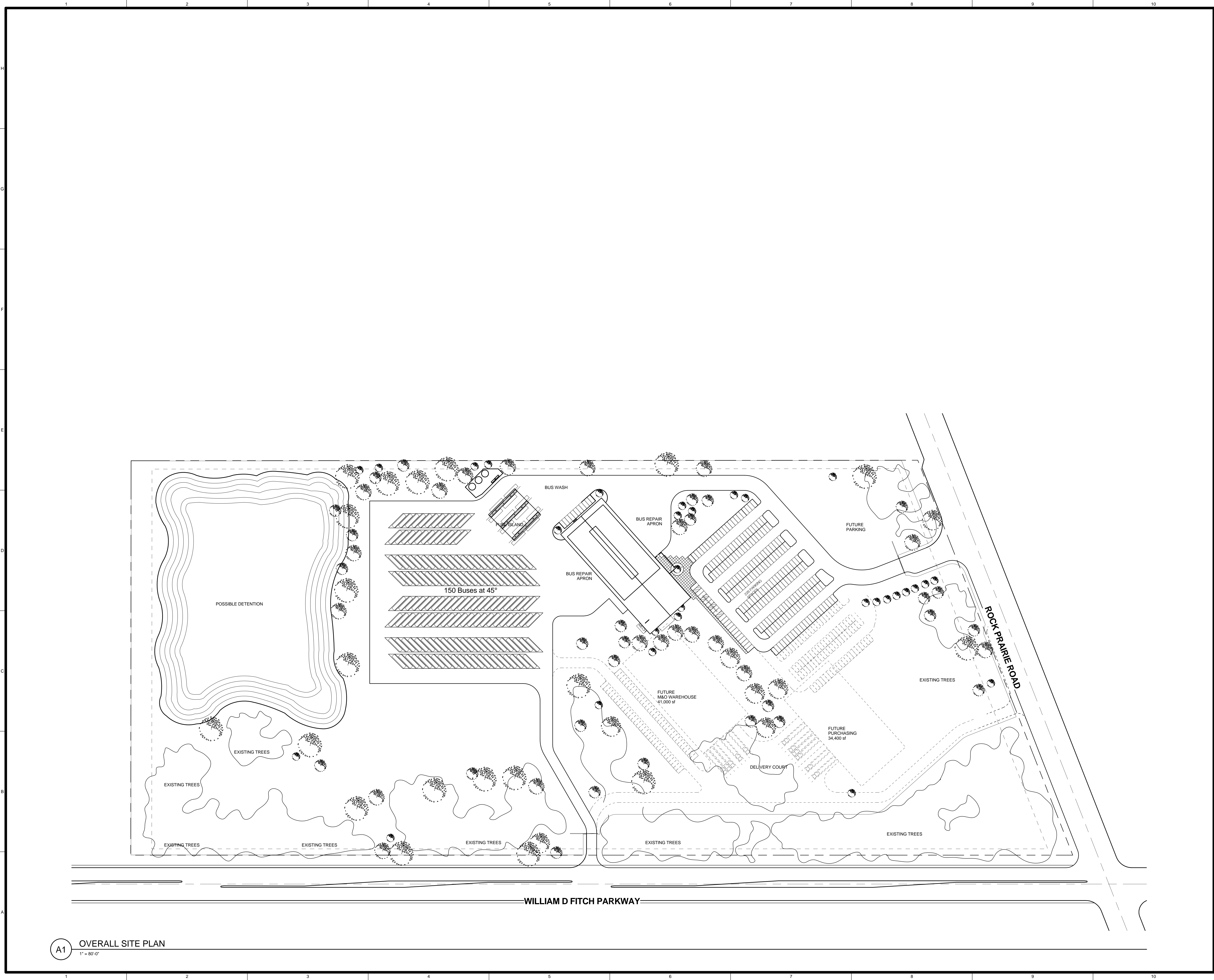
30°34'32.15" N 96°14'28.35" W

elev 246 ft

Sep 13, 2006

Eye alt 2905 ft

9/11/2009 12:37:14 PM
C:\Revit Local Files\440901100_College Station Transportation Center_A09.asia\dwg.rvt



SHWGROUP
ARCHITECTS | ENGINEERS | PLANNERS
20 E GREENWAY PLAZA #200 HOUSTON, TX 77046

50% CD

9/11/2009 12:37:14 PM
**FOR REVIEW
NOT FOR
REGULATORY
APPROVAL,
PERMITTING, OR
CONSTRUCTION**

**College Station
Independent School
District**



**TRANSPORTATION
CENTER
College Station, Texas**

CHECKED: CTH
SCALE: 1" = 80'-0"
© 2009 SHW Group

ISSUE: 08/24/09



**SHEET TITLE:
OVERALL SITE PLAN**

A1 OVERALL SITE PLAN
1" = 80'-0"

AS001
SHW Project: 4409.011.00

9/11/2009 12:37:18 PM
C:\Revit Local Files\440901100_College Station Transportation Center_A09.asia\dwg.plt



A1 ENLARGED SITE PLAN - NE
1" = 50'-0"



SHWGROUP

ARCHITECTS | ENGINEERS | PLANNERS
20 E GREENWAY PLAZA #200 HOUSTON, TX 77046

50% CD

9/11/2009 12:37:18 PM
FOR REVIEW
NOT FOR
REGULATORY
APPROVAL,
PERMITTING, OR
CONSTRUCTION

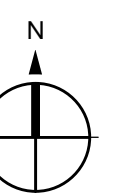
College Station
Independent School
District



TRANSPORTATION
CENTER
College Station, Texas

CHECKED: Checker
SCALE: 1" = 50'-0"
© 2009 SHW Group

ISSUE: 08/24/09



SHEET TITLE:
ENLARGED SITE PLAN NE

AS002
4409.011.00

SHW Project:

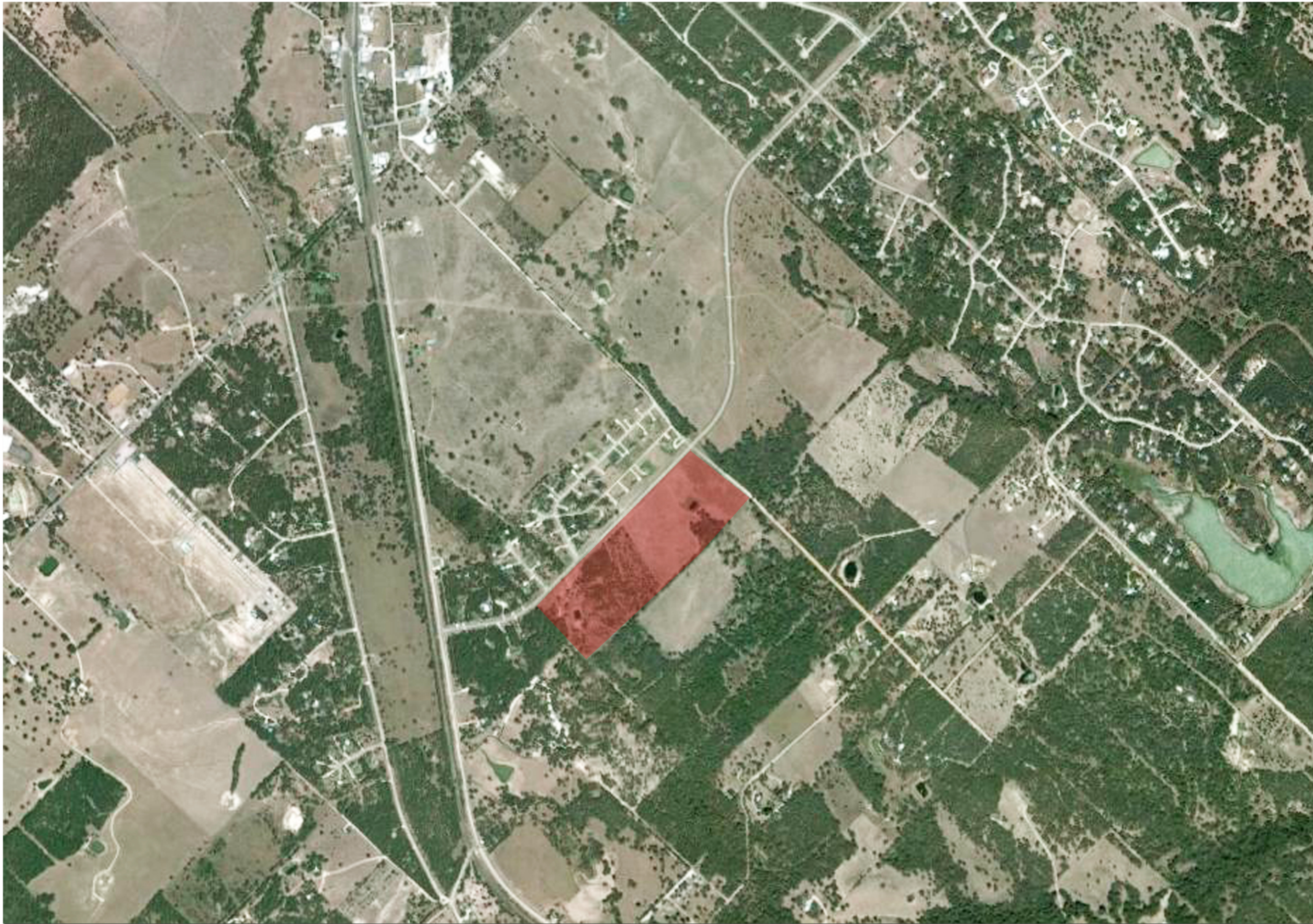
ISSUE: 08/24/09

HW Project: 4409.011.00

Elementary #8

- ▶ Scheduled to open August 2011
 - ▶ GMP Tracking for Board Approval – April 2010
 - ▶ Updated Floor Plan
 - ▶ Three additional inside spaces
 - ▶ 300 SF – Specialist rooms
 - ▶ Additional classroom space
 - ▶ Potentially two additional classrooms on one pod
 - ▶ Additional rooms will not increase enrollment capacity
 - ▶ Other Spaces
 - ▶ General classrooms – tightened up
 - ▶ Library Redesign
 - ▶ Art Room Redesign
-





EXISTING SITE
46 ACRE TRACT



Prototype Elementary & Intermediate School

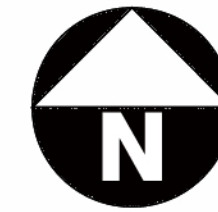
College Station I.S.D. WELLBORN, TEXAS

08.17.2009

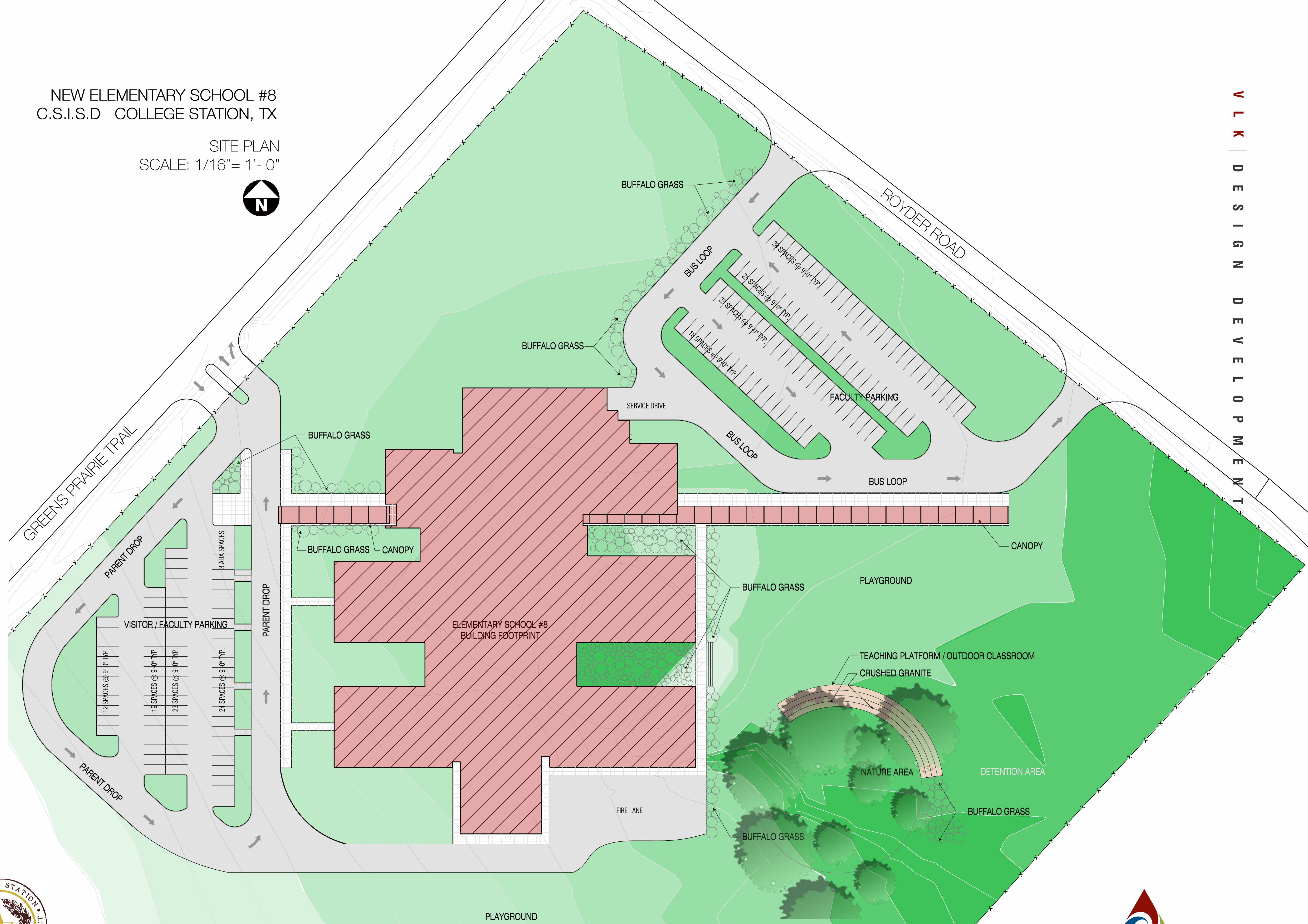


NEW ELEMENTARY SCHOOL #8
C.S.I.S.D COLLEGE STATION, TX

SITE PLAN
SCALE: 1/16" = 1' - 0"



V L K | D E S I G N D E V E L O P M E N T



Prototype Elementary School #8
COLLEGE STATION I.S.D. COLLEGE STATION, TX



V L K | A R C H I T E C T S

College Station High School

- ▶ Scheduled to open – August 2012
 - ▶ GMP for site work and utility infrastructure tracking for – December 2009
 - ▶ Site Plan – Unchanged for the most part
 - ▶ Programming with curricular and extra-curricular areas
 - ▶ Special Education, Art
 - ▶ Career and Technology, Fine Arts
 - ▶ Field House/Inside Athletics & PE
 - ▶ Academic Wings
 - ▶ Images from Rev It
 - ▶ Exterior elevations, Interior spaces, classrooms
-



HIGH SCHOOL SITE



SHWGROUP



College Station High School

▶ Exterior Elevations

▶ Front – Academic Wings

- ▶ 3 stories
- ▶ Student Commons area in the middle of the two wings

▶ Sides

- ▶ Diffusing the light from direct sunlight from East and West
- ▶ Library is in the center visible from both sides

▶ Back

- ▶ The gymnasiums (2), dining area, and auditorium
- ▶ Classrooms facing south (the back of the academic wings)
 - Rooms shielded from direct sunlight
 - Bounce sunlight on to classroom ceilings



