

# 2007 & 2009 BOND UPDATE

April 14, 2010

# 2007 Bond Expenditures

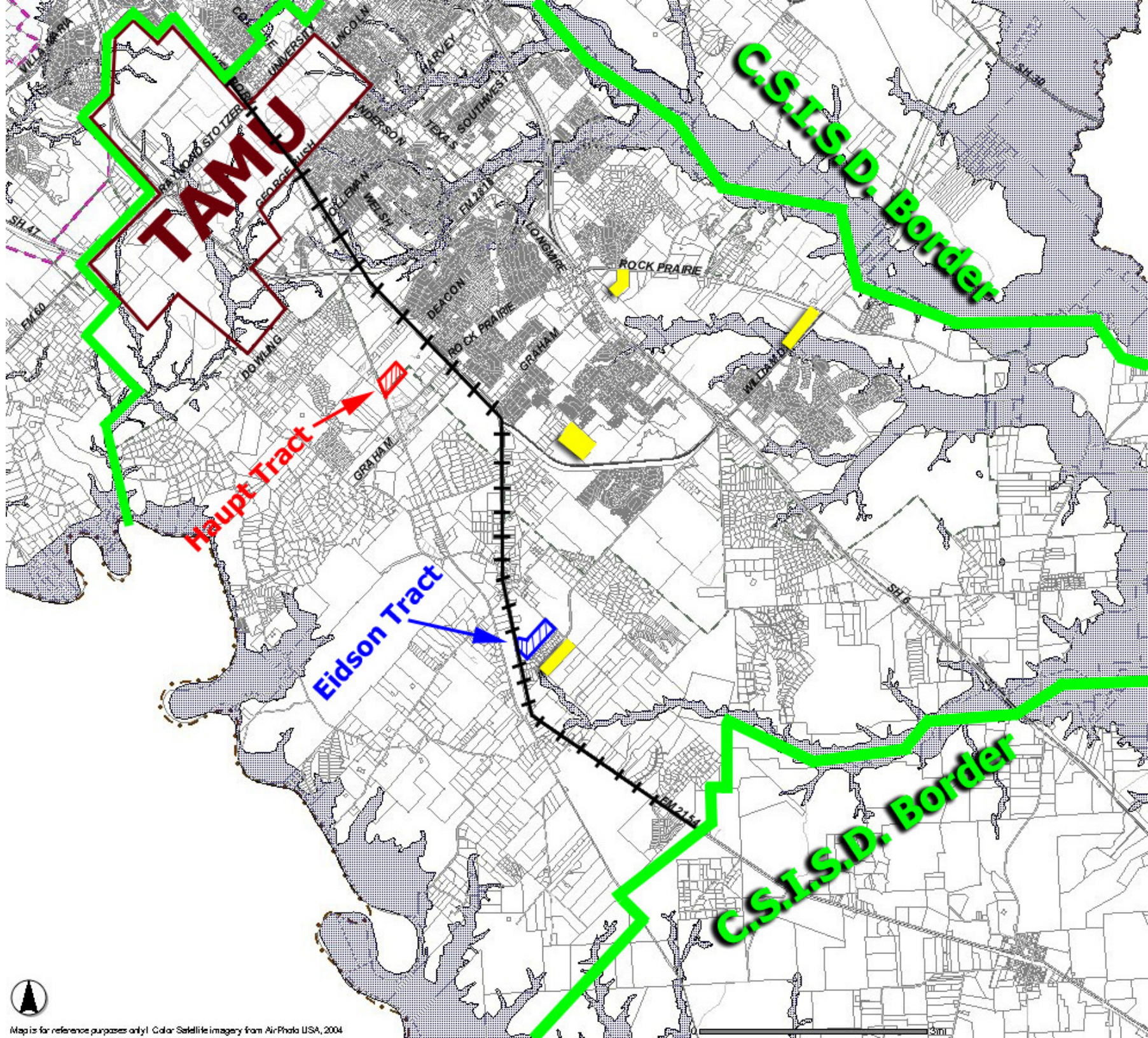
- Closed out the following projects since last month:
  - Creek View
  - College Hills
  - Career and Technology Education
  - CSMS Fine Arts
  - Cypress Grove Classrooms and Roof
  - AMCHS and Oakwood Roofs

# 2007 Additional Projects

- AMCMS Track is Complete
- Security vestibules timelines
  - Construction Documents
  - Bidding in April
  - GMP to Board April 20<sup>th</sup>
  - Summer 2010 Construction
- Classroom additions
  - Construction Documents – after the security vestibules have been designed
  - GMP to Board in October 2010
  - Construction Nov/Dec 2010 to July 2011

# 2007 Additional Projects

- Wireless Overlay of the District
  - ▣ Estimated completion by end of July 2010
- Land Purchases
  - ▣ Eidson
    - 53.31 Acres between Wellborn Road and Royder Road
    - Closed yesterday
  - ▣ Haupt
    - 27.021 Acres on Jones Butler just north of Rock Prairie
    - Need to close by end of April without extension (August with extension)



# 2009 Bond Expenditures

- All 28 buses have been delivered and are in service
  - ▣ 25 regular and SPED buses
  - ▣ 3 transit buses
- Over \$31 million still remains from our first bond sale in 2009
  - ▣ Primarily paid out architect fees
- Tracking for our second bond sale in August/September 2010
  - ▣ ~\$75 Million

# Support Services Facility

- ❑ Slowed initially because of the constant rain this winter
- ❑ The drier weather the last few weeks has improved our progress
- ❑ Still on time to finish by the end of July
- ❑ Construction of the metal building is critical path

# Support Services Facility



- This is a view of the building footprint after concrete drill piers have been completed.
- Grade beam work has already commenced.



# Support Services Facility

- These are the culverts that will handle all of the water entering the site from the Rock Prairie Road area.
- They are under the primary access drive to the front of the building and parking area.



# Support Services Facility



- Underground rough in plumbing and electrical work for main building is complete.
- Preparations for concrete grade beam foundation pour are nearly complete with the first major concrete pour scheduled for yesterday
- This is a view of the formwork for the grade beams being installed.

# Support Services Facility

- This is a view of the old stock tank being backfilled with the dirt being removed per the photo above.
- We are making very efficient use of the dirt on site by “balancing” what we have compared to what we need, which minimizes transportation costs.



# Greens Prairie Elementary

## □ Timeline

- Construction Documents hit the street at the end of March
- Bidding the school in April
- Guaranteed Maximum Price (GMP) at the May Board meeting

## □ Images

GREENS PRAIRIE ELEMENTARY SCHOOL  
COLLEGE STATION I.S.D.



GREENS PRAIRIE ELEMENTARY SCHOOL  
COLLEGE STATION I.S.D.



GREENS PRAIRIE ELEMENTARY SCHOOL  
COLLEGE STATION I.S.D.



# Greens Prairie Elementary – cont.

- City of College Station Coordination
  - City is willing to provide space in the lift station across from the school to meet district needs now and in the future
    - in exchange for 2 acres on the Eidson site for a future fire station
  - City is now seeking to annex Greens Prairie Trail the length of our site
    - Right of way for road
    - Drastic difference between county and city requirements for Greens Prairie Trail



# Greens Prairie Elementary – cont.

- Annexation of site is moving forward
  - City Council approved the petition (moved the process forward)
  - Planning and Zoning reviewed the petition and failed to make a recommendation
  - Two public hearings have been set for comment
    - Monday                      5/17/10                      7:00 p.m.
    - Tuesday                      5/18/10                      6:00 p.m.
  - Final Vote for Annexation – Thursday 6/10/10

# College Station High School

- City of College Station Coordination
  - ▣ Interlocal Agreement (ILA) with the city of College Station to share the costs for the following
  - ▣ CSISD dedicated the right of way for
    - A 551 square foot corner clip at the intersection of Barron Road and Victoria Avenue
    - The land needed for the extension of Victoria Avenue from its current terminus to State Highway 40
  - ▣ In consideration for the land above, the city of College Station will construct and install a traffic signal at the corner of Barron Road and Victoria Avenue.

# College Station High School

- Three tiered Guaranteed Maximum Price (GMP)
  - ▣ Site Package A (Clearing and Grubbing)
    - January
  - ▣ Site Package B (Site and Field Work)
    - March
  - ▣ Package C (Balance of the project)
    - Board will consider GMP at the April 20<sup>th</sup> Board meeting
      - \$82,510,945
    - The entire project is \$45,000 under the planning amount

# CSHS Work Commencing

- Trees began coming down yesterday
  - ▣ Starting in the back working to the front
- Saving trees for potential use in auditorium
  - ▣ 4' x 4' sound reflecting surfaces
  - ▣ Running a mini mill on football field – cutting, drying and sending to Austin
- 73 Trees identified to be preserved on the site
- Planting over 200 additional trees

# CSHS Site





Questions/Comments?