

A decorative horizontal line with a light green-to-yellow gradient. A black left bracket is positioned on the left side, and a yellow right bracket is on the right side.

# 2009 Bond Update – July 21, 2009

Overall Update and Preliminary Schematic  
Design for CSHS and Transportation  
Center

# Coordination with City of College Station

- Barron/Victoria Projects
  - Barron Extension - ROW
  - Victoria Extension
- Support Services Facility
  - Curb cuts on both streets
  - Overall site design for this gateway
- Regulation

# [ Elementary #8 ]

---

- Greens Prairie Trail/Royder Road
- Basing design on Creek View model
- Timeline – Open August 2011
  - Schematic Design – August
  - Break ground – Spring

# [ Support Services Facility ]

- William D. Fitch/Rock Prairie Road
- Phase I will be Transportation facility
  - Subsequent phase(s) will add Operations and Purchasing/Warehouse
- Timeline – Open Fall 2010
  - Design Development – now
  - Breaking ground – January 2010
- Facility is still in preliminary design stages, many changes still to come.

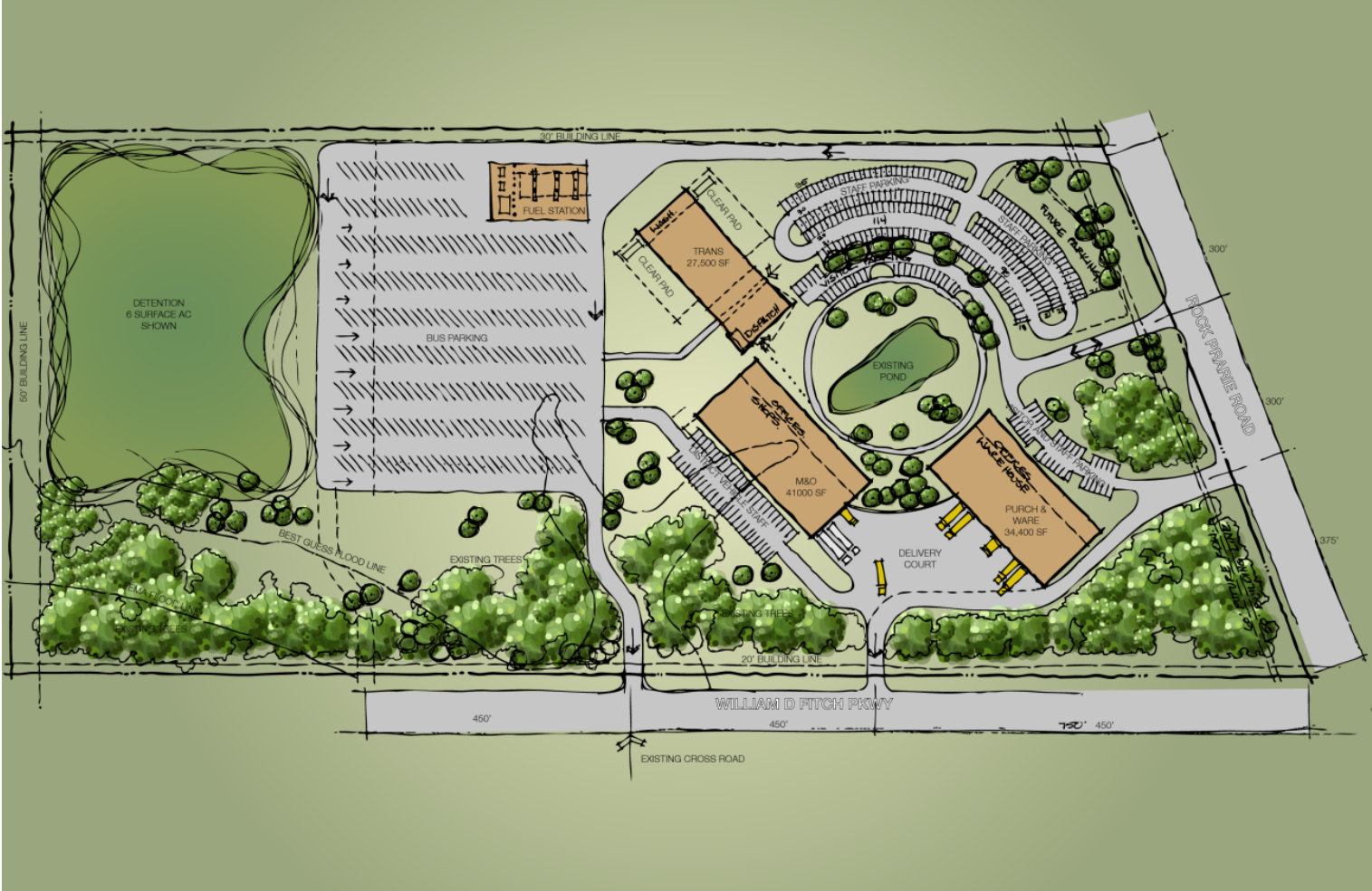
# Support Services Facility



SHWGROUP



# Support Services Facility Site Plan



SHWGROUP



# Transportation Center Floor plan



SHWGROUP



# [ College Station High School ]

- Barron/Victoria
- Timeline – Open August 2012
  - Longer design process
  - Construction beginning around May 2010
- Facility is still in preliminary design stages, many changes still to come.



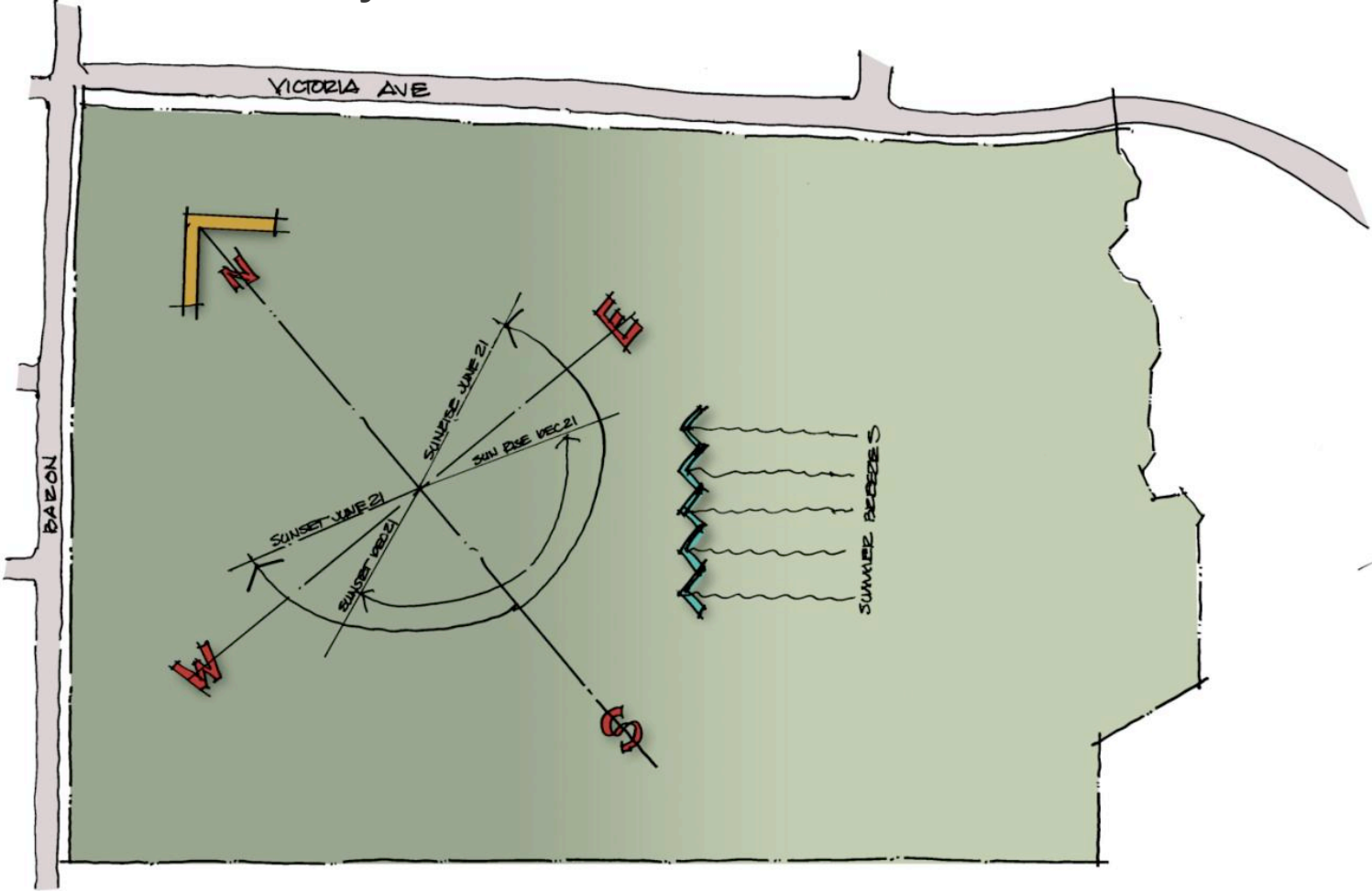
# High School Site



SHWGROUP



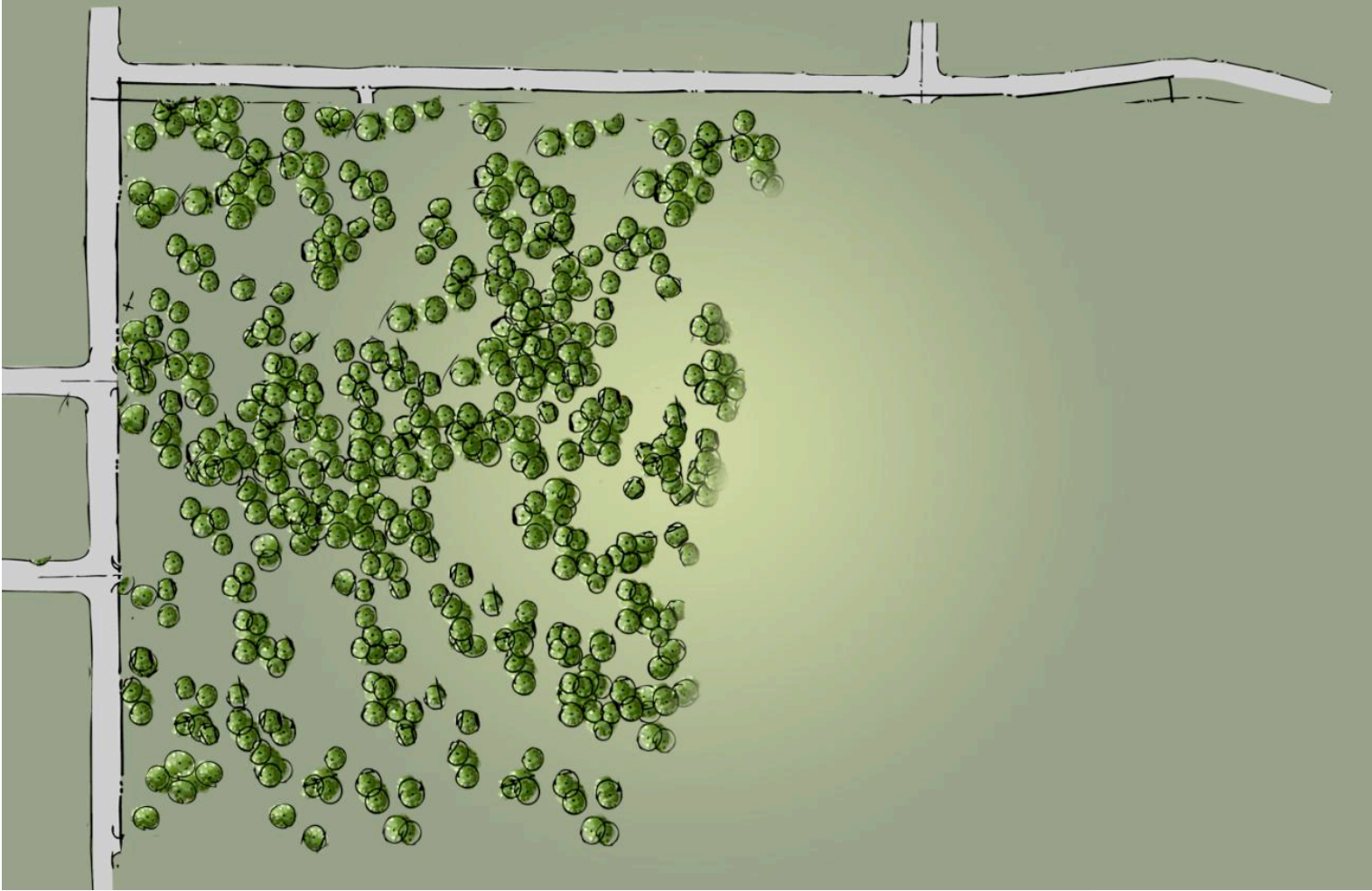
# High School Site Study



SHWGROUP



# High School Site Plan



SHWGROUP



# High School Site Plan



SHWGROUP



# High School Site Plan



SHWGROUP

