



SCASD DISTRICT-WIDE FACILITIES MASTER PLAN - ELEMENTARY SCHOOL UPDATE



Carl Street Community Meeting
May 25, 2016



ARCHITECTS



Crabtree, Rohrbaugh & Associates Architects
401 East Winding Hill Road
Mechanicsburg, Pennsylvania 17055
phone: (717) 458-0272 - fax: (717) 458-0047

MEP ENGINEERS



MOORE ENGINEERING COMPANY

CM SERVICES



Massaro
CM SERVICES, LLC

CIVIL ENGINEERS



- 01** INTRODUCTION AND OVERVIEW
- 02** DISCUSSION OF PROJECT GOALS
- 03** OTHER DISTRICT ELEMENTARY SCHOOLS
- 04** OPTIONS
- 05** TABLE DISCUSSIONS
- 06** REPORT OF TABLE DISCUSSIONS
- 07** NEXT STEPS
- 08** PUBLIC COMMENT

01 INTRODUCTION AND OVERVIEW

02 DISCUSSION OF PROJECT GOALS

03 OTHER DISTRICT ELEMENTARY SCHOOLS

04 OPTIONS

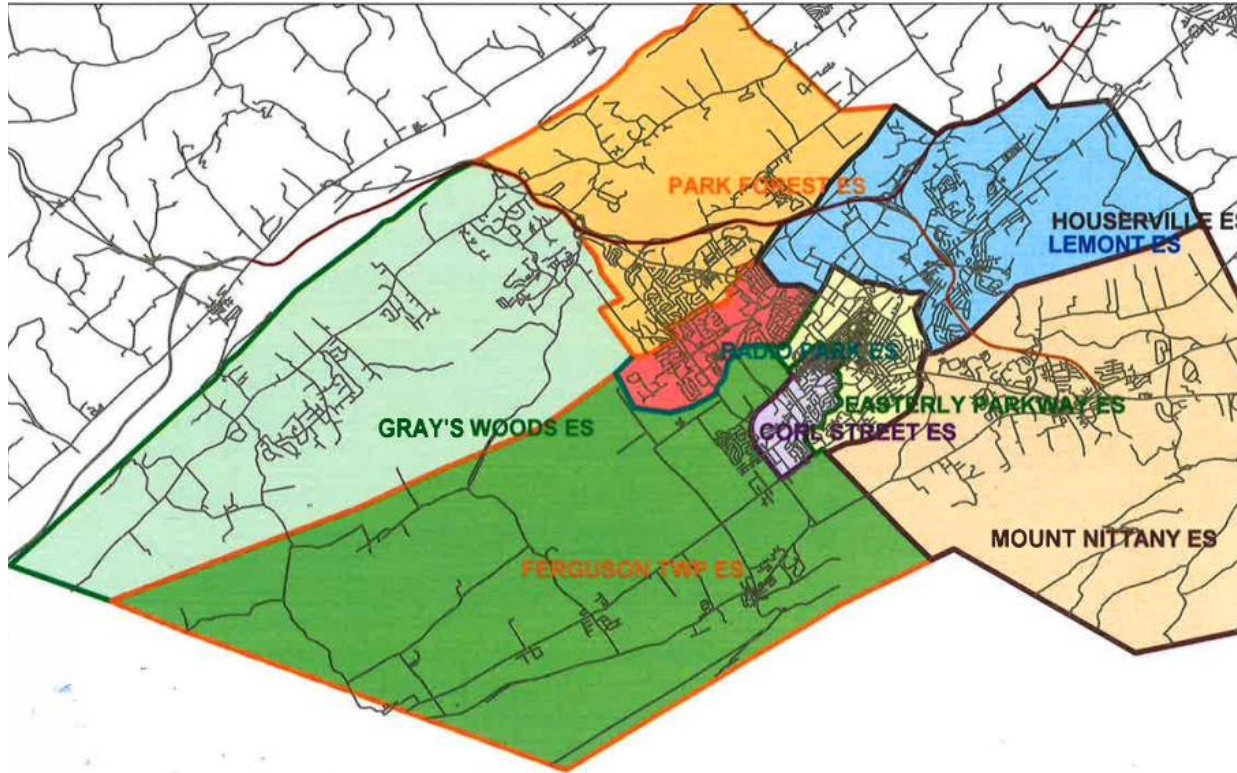
05 TABLE DISCUSSIONS

06 REPORT OF TABLE DISCUSSIONS

07 NEXT STEPS

08 PUBLIC COMMENT

- 01 INTRODUCTION AND OVERVIEW
- 02 DISCUSSION OF PROJECT GOALS**
- 03 OTHER DISTRICT ELEMENTARY SCHOOLS
- 04 OPTIONS
- 05 TABLE DISCUSSIONS
- 06 REPORT OF TABLE DISCUSSIONS
- 07 NEXT STEPS
- 08 PUBLIC COMMENT



- 1. Building and Program Equity in Elementary School Facilities**
- 2. Sustainability: LEED Gold**
- 3. Separate Gymnasium and Cafeteria**

- 01 INTRODUCTION AND OVERVIEW
- 02 DISCUSSION OF PROJECT GOALS
- 03 OTHER DISTRICT ELEMENTARY SCHOOLS**
- 04 OPTIONS
- 05 TABLE DISCUSSIONS
- 06 REPORT OF TABLE DISCUSSIONS
- 07 NEXT STEPS
- 08 PUBLIC COMMENT



EASTERLY PARKWAY ES
GRAY'S WOODS ES
PARK FOREST ES

CR

FIRST ROUND OF PROJECTS



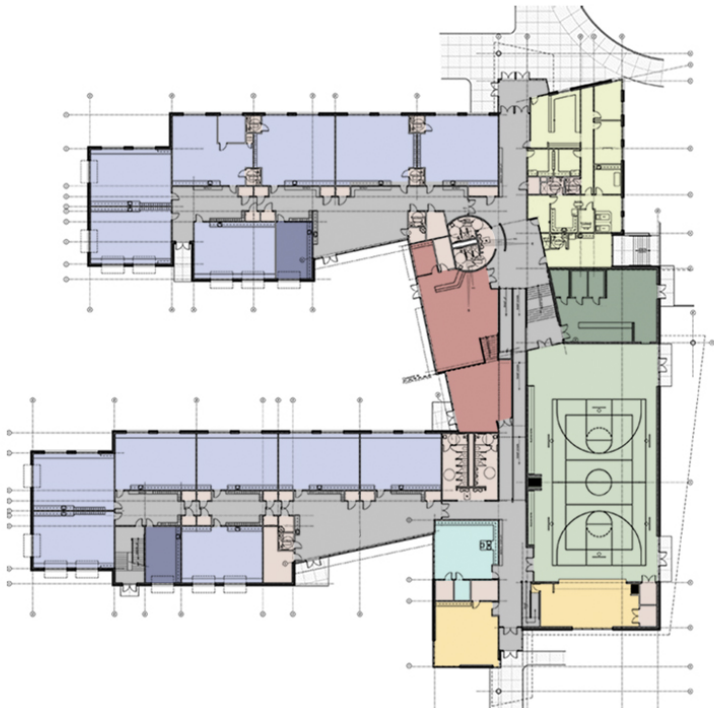


MOUNT NITTANY ES
FERGUSON TOWNSHIP ES

CR

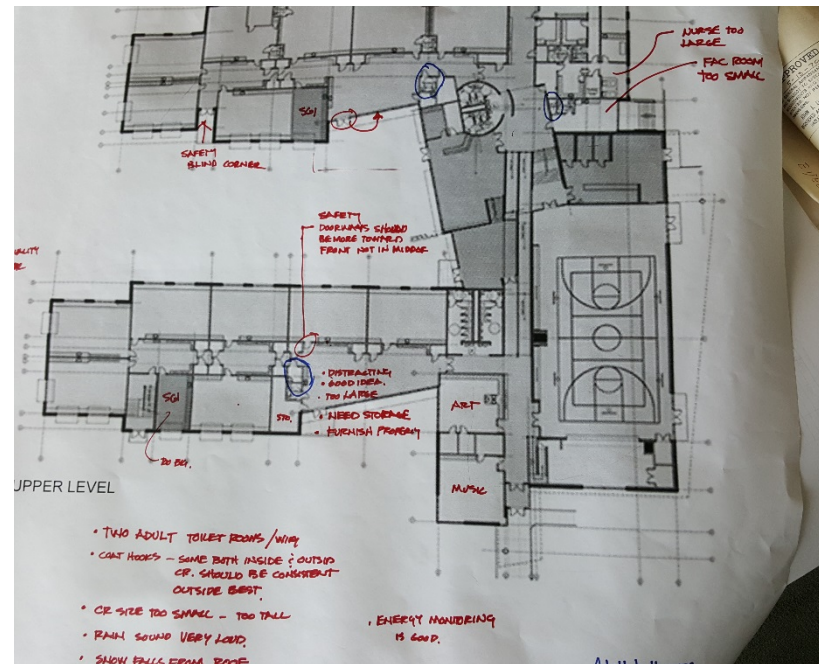
SECOND ROUND OF PROJECTS





WELL DONE

- **Natural light**
- **Building organization (Academics / Specials)**
- **Colors / Wayfinding**
- **Collaboration areas (FT, MN)**
- **Student storage in hallways**
- **Pass through doors between CR**



NEED TO IMPROVE

- **Separate Gym / Cafeteria**
- **Faculty Toilet (privacy Issue)**
- **Collaboration areas (EP, GW, PF)**
- **Amount and location of storage**
- **Program adjacencies**

- 01 INTRODUCTION AND OVERVIEW
- 02 DISCUSSION OF PROJECT GOALS
- 03 OTHER DISTRICT ELEMENTARY SCHOOLS
- 04 OPTIONS**
- 05 TABLE DISCUSSIONS
- 06 REPORT OF TABLE DISCUSSIONS
- 07 NEXT STEPS
- 08 PUBLIC COMMENT

OPTION “1”

RADIO PARK ES	ADDITIONS / RENOVATIONS
HOUSERVILLE ES	ADDITIONS / RENOVATIONS
CORL STREET ES	ADDITIONS / RENOVATIONS
LEMONT ES	REPURPOSE

OPTION “2”

RADIO PARK ES	ADDITIONS / RENOVATIONS
HOUSERVILLE ES	ADDITIONS / RENOVATIONS
CORL STREET ES	REPURPOSE
LEMONT ES	REPURPOSE

OPTION “3”

RADIO PARK ES	NEW CONSTRUCTION
HOUSERVILLE ES	NEW CONSTRUCTION
CORL STREET ES	ADDITIONS / RENOVATIONS
LEMONT ES	REPURPOSE

OPTION “4”

RADIO PARK ES	NEW CONSTRUCTION
HOUSERVILLE ES	NEW CONSTRUCTION
CORL STREET ES	REPURPOSE
LEMONT ES	REPURPOSE

OPTION “5”

RADIO PARK ES	ADDITIONS / RENOVATIONS
HOUSERVILLE ES	NEW CONSTRUCTION
CORL STREET ES	ADDITIONS / RENOVATIONS
LEMONT ES	REPURPOSE

OPTION “6”

RADIO PARK ES	ADDITIONS / RENOVATIONS
HOUSERVILLE ES	NEW CONSTRUCTION
CORL STREET ES	REPURPOSE
LEMONT ES	REPURPOSE

OPTION “7”

RADIO PARK ES	NEW CONSTRUCTION
HOUSERVILLE ES	ADDITIONS / RENOVATIONS
CORL STREET ES	ADDITIONS / RENOVATIONS
LEMONT ES	REPURPOSE

OPTION “8”

RADIO PARK ES	NEW CONSTRUCTION
HOUSERVILLE ES	ADDITIONS / RENOVATIONS
CORL STREET ES	REPURPOSE
LEMONT ES	REPURPOSE

Cost Analysis for Options

At this early stage it appears that Square Footage for the Elementary Schools are as follows

- Radio Park ES 77,000 – 80,000 Square Feet
- Houserville ES 68,000 – 71,000 Square Feet
- Corl Street ES 49,000 – 52,000 Square Feet

- The preliminary designs are based upon early discussions with SCASD and surveys of existing building renovated within SCASD. It is anticipated in depth with community, staff, and SCASD over next 4 month will refine program within the square footages identified.

Based upon the square footages identified the following costs were derived

- Radio Park ES \$17 - \$19.8 Million
- Houserville ES \$16.5 - \$19.3 Million
- Corl Street ES \$11 - \$12.2 Million

- Options described in previous slides show both Additions / Renovations and New Construction. At this early time due to the level of renovation scope, it should be anticipated that both Additions / Renovations and New Construction will be within the range of costs shown above. As final options are developed beyond preliminary Study Update, these costs will be refined for final selection by SCASD.
- PlanCON Part A/B costs have used the upper range costs at this time to be conservative in planning.

- 01 INTRODUCTION AND OVERVIEW
- 02 DISCUSSION OF PROJECT GOALS
- 03 OTHER DISTRICT ELEMENTARY SCHOOLS
- 04 OPTIONS
- 05 TABLE DISCUSSIONS**
- 06 REPORT OF TABLE DISCUSSIONS
- 07 NEXT STEPS
- 08 PUBLIC COMMENT

01 DISCUSS 8 OPTIONS

02 CORL STREET building opportunities and challenges (lessons learned)

OPTION "1"

RADIO PARK ES	ADDITIONS / RENOVATIONS
HOUSERVILLE ES	ADDITIONS / RENOVATIONS
CORL STREET ES	ADDITIONS / RENOVATIONS
LEMONT ES	REPURPOSE

OPTION "2"

RADIO PARK ES	ADDITIONS / RENOVATIONS
HOUSERVILLE ES	ADDITIONS / RENOVATIONS
CORL STREET ES	REPURPOSE
LEMONT ES	REPURPOSE

OPTION "3"

RADIO PARK ES	NEW CONSTRUCTION
HOUSERVILLE ES	NEW CONSTRUCTION
CORL STREET ES	ADDITIONS / RENOVATIONS
LEMONT ES	REPURPOSE

OPTION "4"

RADIO PARK ES	NEW CONSTRUCTION
HOUSERVILLE ES	NEW CONSTRUCTION
CORL STREET ES	REPURPOSE
LEMONT ES	REPURPOSE

OPTION "5"

RADIO PARK ES	ADDITIONS / RENOVATIONS
HOUSERVILLE ES	NEW CONSTRUCTION
CORL STREET ES	ADDITIONS / RENOVATIONS
LEMONT ES	REPURPOSE

OPTION "6"

RADIO PARK ES	ADDITIONS / RENOVATIONS
HOUSERVILLE ES	NEW CONSTRUCTION
CORL STREET ES	REPURPOSE
LEMONT ES	REPURPOSE

OPTION "7"

RADIO PARK ES	NEW CONSTRUCTION
HOUSERVILLE ES	ADDITIONS / RENOVATIONS
CORL STREET ES	ADDITIONS / RENOVATIONS
LEMONT ES	REPURPOSE

OPTION "8"

RADIO PARK ES	NEW CONSTRUCTION
HOUSERVILLE ES	ADDITIONS / RENOVATIONS
CORL STREET ES	REPURPOSE
LEMONT ES	REPURPOSE

- 01 INTRODUCTION AND OVERVIEW
- 02 DISCUSSION OF PROJECT GOALS
- 03 OTHER DISTRICT ELEMENTARY SCHOOLS
- 04 OPTIONS
- 05 TABLE DISCUSSIONS
- 06 REPORT OF TABLE DISCUSSIONS**
- 07 NEXT STEPS
- 08 PUBLIC COMMENT

- 01 INTRODUCTION AND OVERVIEW
- 02 DISCUSSION OF PROJECT GOALS
- 03 OTHER DISTRICT ELEMENTARY SCHOOLS
- 04 OPTIONS
- 05 TABLE DISCUSSIONS
- 06 REPORT OF TABLE DISCUSSIONS
- 07 NEXT STEPS**
- 08 PUBLIC COMMENT



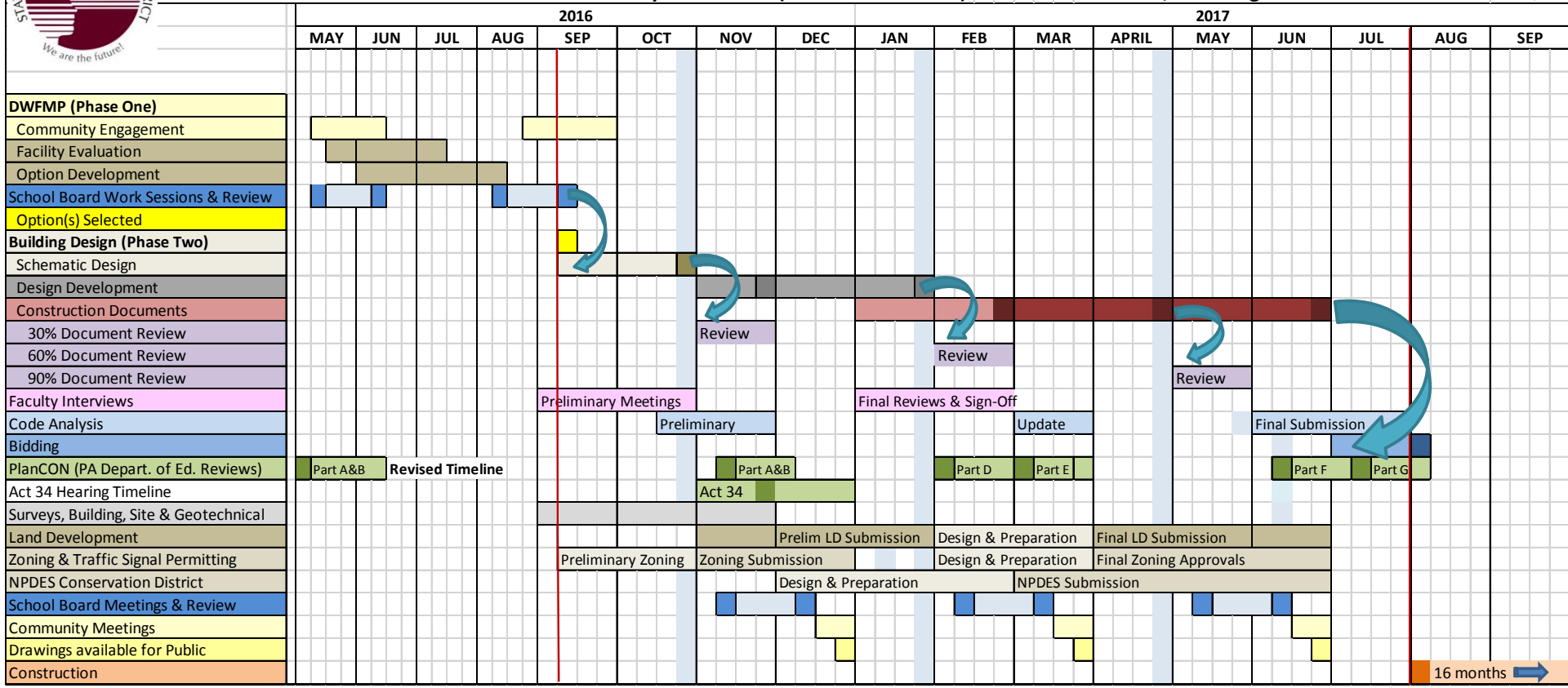
STATE COLLEGE AREA SCHOOL DISTRICT



PROPOSED DESIGN SCHEDULE- District Wide Facility Master Plan (Phase One and Two)

Crabtree, Rohrbaugh & Associates Architects

9-May-16



*Preliminary DWFMP Schedule to identify general approach, it is anticipated this schedule will evolve with the integration of the School Board, Administration, and Design Team.

**PlanCON Part A&B has been moved up in schedule to accommodate PDE May 15, 2016 Moratorium Date.



PROPOSED DESIGN SCHEDULE





DWFMP (Phase One)

		Community Engagement	Facility Evaluation	Option Dev.	School Board Review	Option(s) Selection
2016	May	May 25 Corl St May 31 Radio Park				
	Jun	June 1 Houserville June 16 MNMS				
	Jul	Week of the 18th				
	Aug	Week of the 15th				
	Sep	Tentative Sept. 5 and 19				
	Oct	Sept. 12 & 26 Board Meetings				
	Nov					
	Dec					
2017	Jan					
	Feb					
	Mar					
	Apr					
	May					
	Jun					
	Jul					

Scheduled developed by Crabtree, Rohrbaugh Associates Architects and SCASD Administration Schedule will evolve with integration of School Board, Administration, and Design Team.




Building Design (Phase Two)

		Schematic Design	Design Dev.	Construction Documents	30% Doc. Review	60% Doc. Review	90% Doc. Review	Staff Interviews	Code Analysis	Bidding
2016	May									
	Jun									
	Jul									
	Aug									
	Sep									
	Oct									
	Nov									
	Dec									
2017	Jan									
	Feb									
	Mar									
	Apr									
	May									
	Jun									
	Jul									

Scheduled developed by Crabtree, Rohrbaugh Associates Architects and SCASD Administration Schedule will evolve with integration of School Board, Administration, and Design Team.



Building Design (Phase Two) cont'd

		PlanCon	Act 34 Hearing	Surveys & Geo	Land Dev.	Zoning and Taffic Signal Permitting	NPDE's Conversation District	Community Meetings	Construction
2016	May	A&B Plan	Moratorium Deadline	May 15					
	Jun								
	Jul								
	Aug								
	Sep								
	Oct								
	Nov	A & B							
	Dec								
2017	Jan								
	Feb	D							
	Mar	E							
	Apr								
	May								
	Jun	F							
	Jul	G							 16 mo.

Scheduled developed by Crabtree, Rohrbaugh Associates Architects and SCASD Administration Schedule will evolve with integration of School Board, Administration, and Design Team.

- 01 INTRODUCTION AND OVERVIEW
- 02 DISCUSSION OF PROJECT GOALS
- 03 OTHER DISTRICT ELEMENTARY SCHOOLS
- 04 OPTIONS
- 05 TABLE DISCUSSIONS
- 06 REPORT OF TABLE DISCUSSIONS
- 07 NEXT STEPS
- 08 PUBLIC COMMENT**