

# Memorial Field Update

Board of School Directors - October 8, 2012

# Outline

- 1) Introduction
- 2) Abbreviated Timeline of Events
- 3) Technical Report on the Issues
- 4) Potential Options for Moving Forward
- 5) Interim Operations
- 6) Next Steps

# 1) Introduction

- *(From the booklet, “The Public Schools of the State College Area: A History, The First Forty-Four Years: 1896-1940” by Jo Hays and Margaret Riley)*

“The sink hole south of the Fraser Street building between Foster and Nittany Avenues, offered to the Board by owner John Noll at a fee of \$3,000 and \$15 for costs, was accepted at the October 26, 1914 meeting for \$3,042. The next month the Board began protesting its continued use as a dump, without success for some time.”

## 2) Abbreviated Timeline of Events

- **June 2000** – East Bleacher Remediation
- **December 2001** – DWFMP published
- **April 2002** – Public Hearing on Memorial Field
- **April 2003** – Board Awards Bid for Field Project
- **Nov. 2004** – Board awards bid to replace lighting standards
- **October 2006** - Stadium Master Plan from L. R. Kimball
- **July 2007** – Minor East Bleacher upgrades
- **January 2008** – Section of West Bleacher Closed



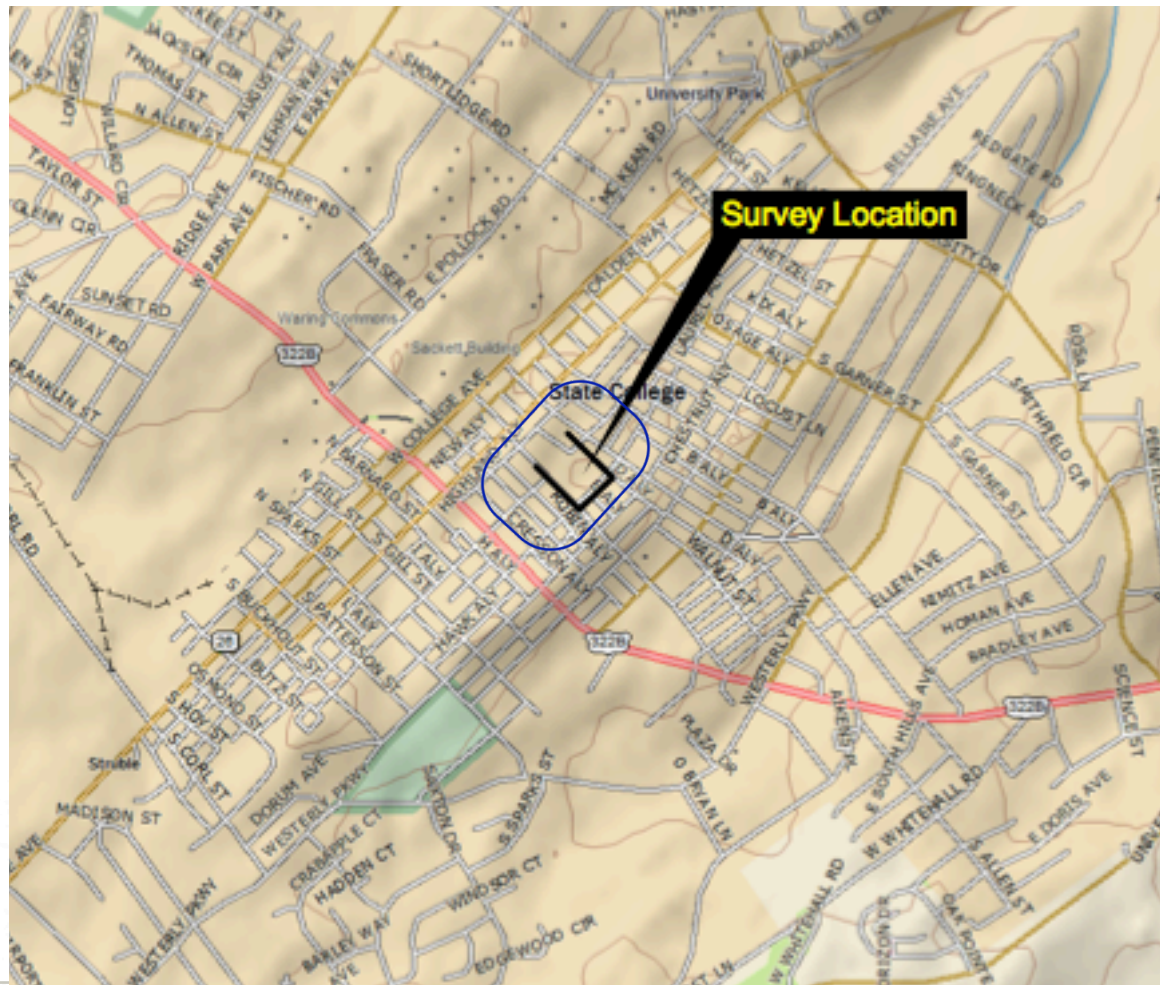
## 2) Abbreviated Timeline of Events

- **June 2009** – District Wide Facilities Master Plan updated
- **February 2010** – Architect hired for new Field Master Plan
- **April 2011** – Board accepts schematic design for Master Plan
- **June 2011** – Design of Phase 1 project authorized
- **August 2012** – SCASD staff discovers shifting of ground
- **September 21, 2012** – Final Report issued
- **September 27, 2012** – Report received by SCASD
- **October 1, 2012** – Bleachers closed

### 3) Technical Report on the Issues

---

# Drainage Area



# Flooding: surcharge at sinkhole





# August-Bleacher structure separated from foundation/footer



# August - Subsidence





# August - Subsidence





# Subsidence at Sinkhole grate

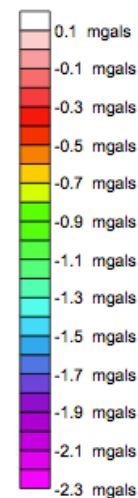
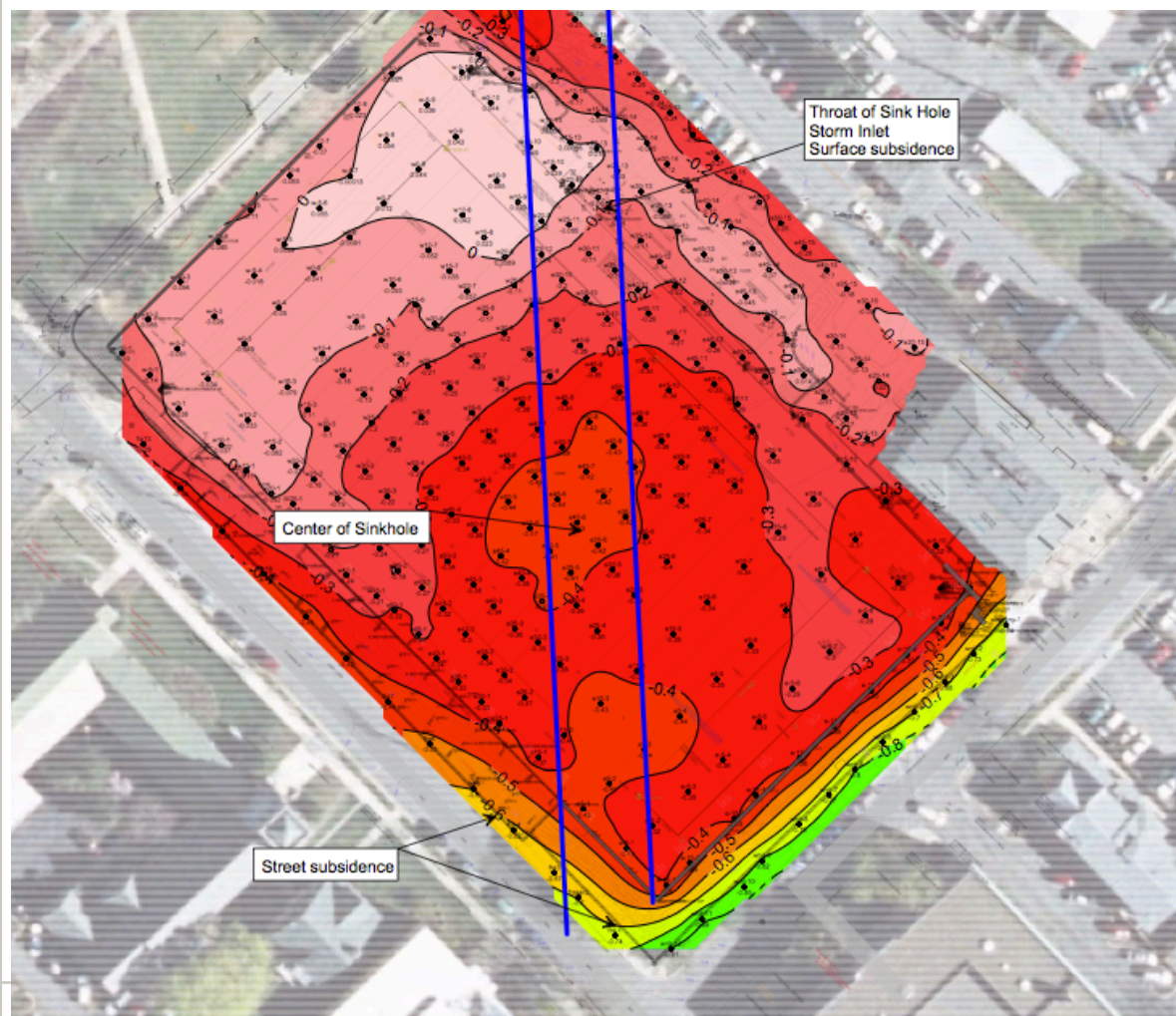




# August – Remedial Bracing



# Field Overview



## Legend

e45-2 Gravity Locations with Measurement

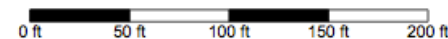
Deep-seated Fracture Zone

## Notes

Microgravity survey conducted September 4 - 7, 2012 using L & R G-600 differential microgravimeter.

Gravity locations surveyed by Sweetland Engineering NAD 1983 US State Plane (Pennsylvania, North) coordinate system in feet.

Locations are approximate.



The Hutchinson Group, Ltd.

4280 Old William Penn Hwy  
Murrysville, Pennsylvania 15568  
(724) 325-3996 Fax: (724) 733-7501  
www.geo-image.com

DIES	P/JH	9/17/12
DRN	P/JH	9/17/12
CHK	P/JH	9/17/12
REV		
PROJ. MGR.	P/JH	9/17/12

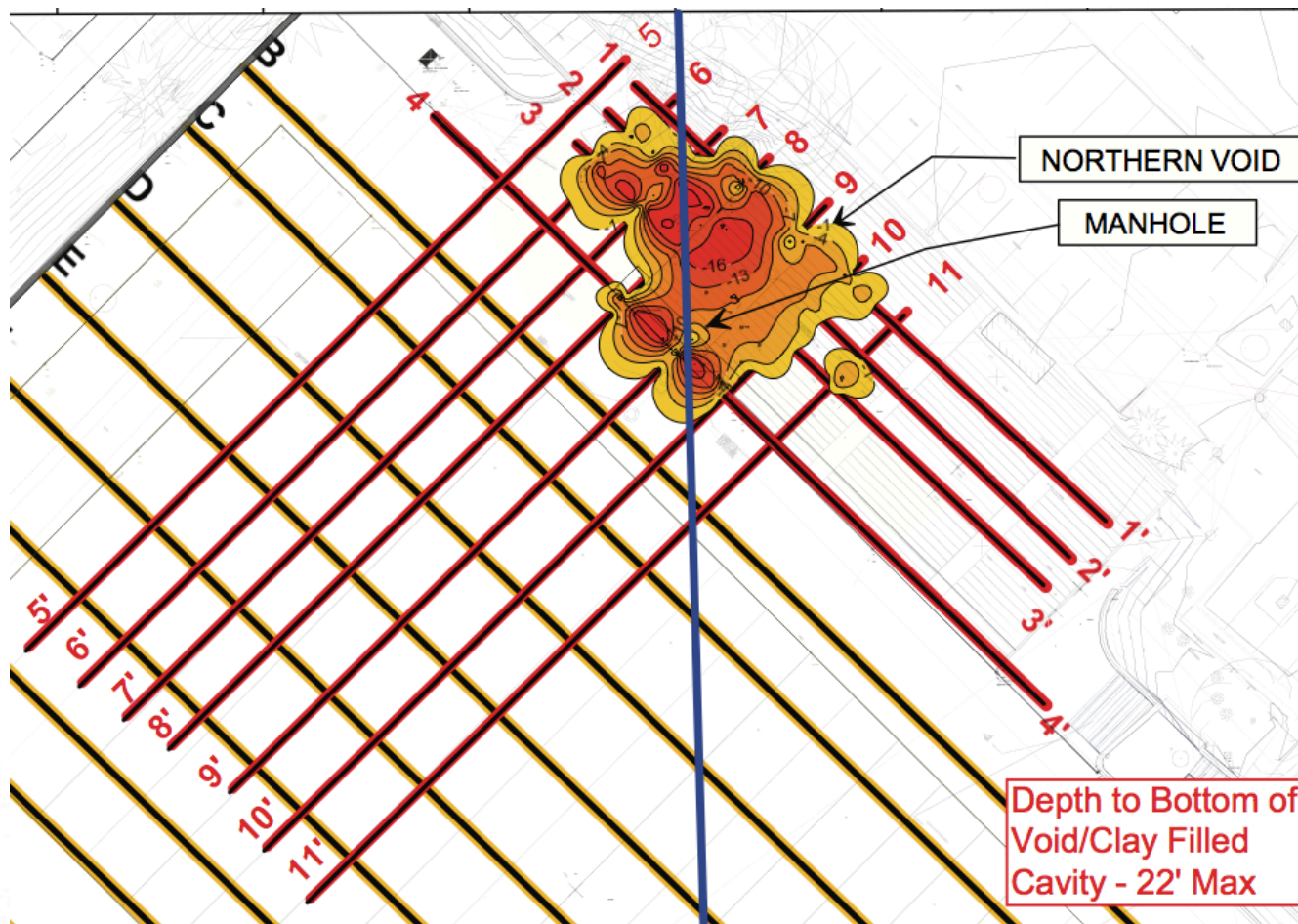
SCALE: 1 in = 50 ft  
SOURCE: Sweetland, 2012

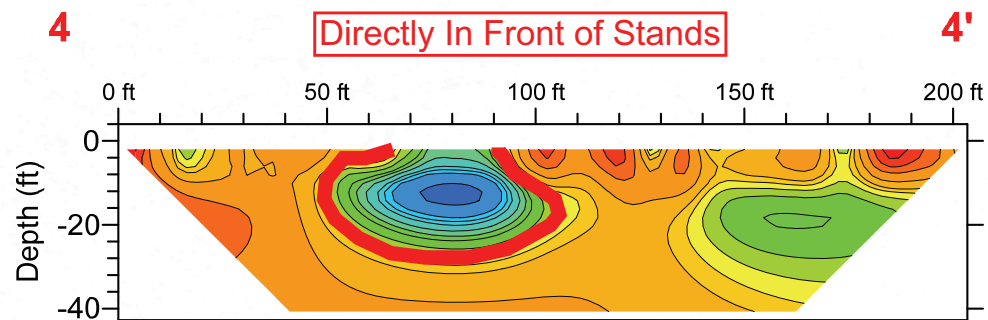
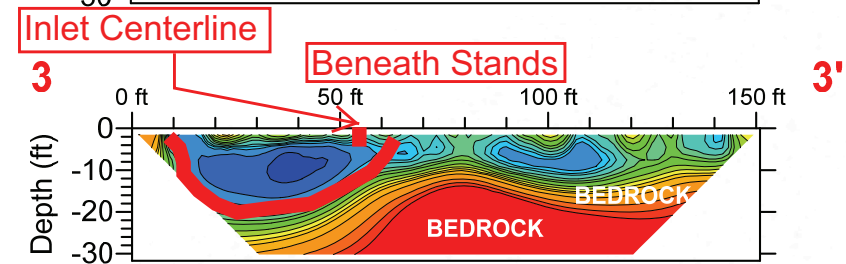
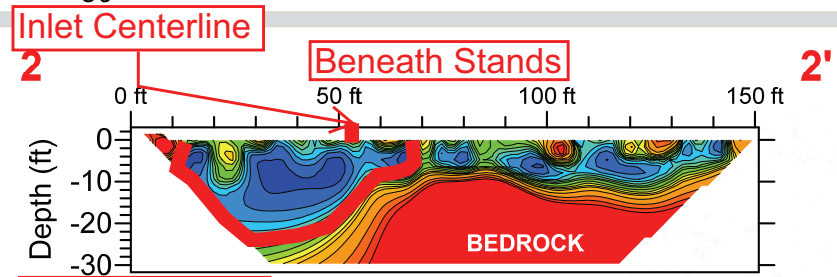
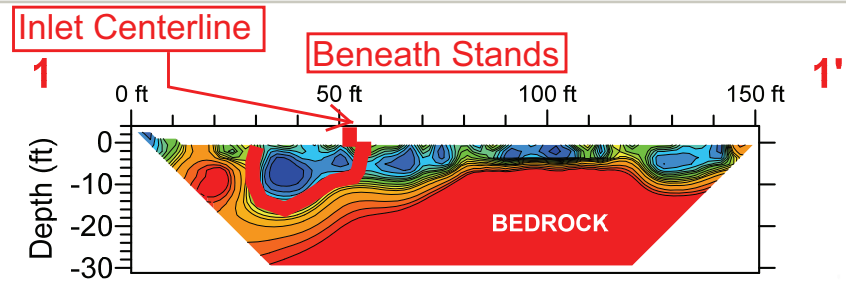
PROJECT:  
Geophysical Investigation  
Memorial Field  
State College, Pennsylvania

SHEET TITLE:  
**Figure 3**  
**Tidal-Corrected**  
**Differential Gravity Map**

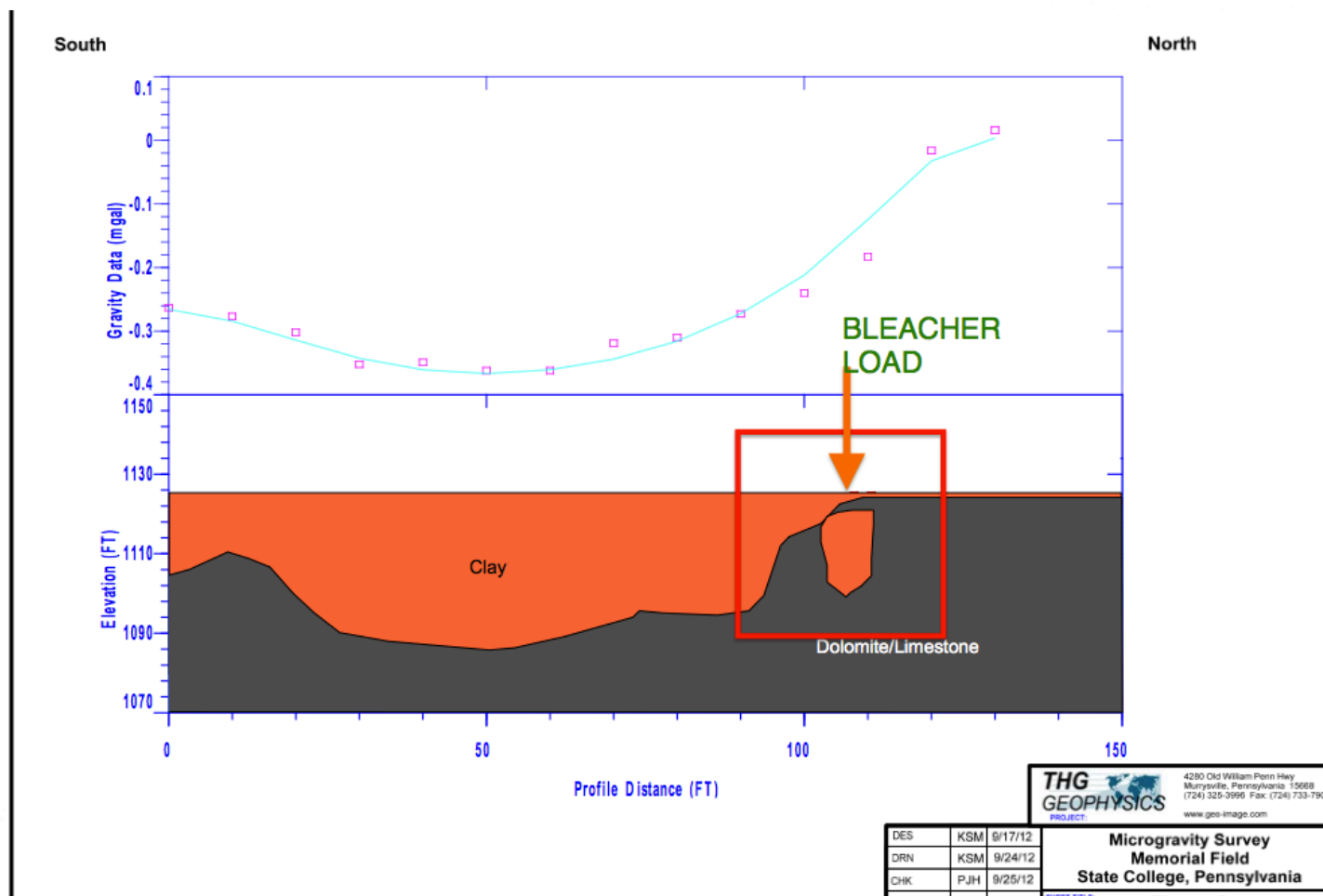


# Subsurface: East Bleacher





# Bleacher loading



## 4) Potential Options for Moving Forward

- **a) Repair**
- **b) Create new Memorial Field Master Plan**
- **c) Move stadium to another site; leave Memorial Field**
- **d) Move stadium to another site; continue use of Field**
- **e) Prevent storm water from entering sinkhole and redirect**



5) Interim Operations

6) Next Steps

