

PROJECT

LOSD Long-Range Facility Planning Committee

MEETING SUBJECT

Kick-off Meeting

DATE

2023-11-15

LOCATION

Administration Building – Board Room

TIME

4:00-5:30pm

PARTICIPANTS

See attached Sign-In Sheet

DISTRIBUTION

Attendees

This is a record of the November 15th Long Range Planning Committee Kickoff meeting.

Meeting Agenda

1. Welcome
2. LRFP Process & Schedule
3. Committee Vision Workshop
4. 2020 Recommendations & Review of District Properties
5. Next Steps

LRFP Process & Schedule

- Rebecca reviewed the long-range planning process, schedule and assessments currently being completed. See attached schedule

Committee Vision Workshop

- The Committee's Charge:
 - To represent the entire LOSD community
 - To consider current and future generations
 - To develop a plan for facility improvements and make an informed recommendation to the board
- The Committee's Mission:
 - "Our mission is to facilitate and support teaching and learning through the maintenance and improvement of our physical environment."
- The committee members were asked to write down their response to complete the following phrases:
 1. School facilities contribute to the District's mission and vision when...
 2. Our greatest aspirations are...
 3. In 10 years, the Lake Oswego School District's facilities will...
- These responses will be used to develop a vision and set of guiding principles for the committee and long range planning process. For members of the committee unable to attend, these three questions will also be put in a survey to be completed prior to the January meeting.
- The following is a record of each response:
 1. School facilities contribute to the District's mission and vision when...
 - a. They include everyone and support the LOSD mission
 - b. Universal design
 - c. They are safe, comfortable, inviting, efficient, and welcoming
 - d. Teachers are able to teach however they want
 - e. They are clean and safe
 - f. They are welcoming
 - g. They are flexible and easily adaptable to curriculum/program changes
 - h. Facilities follow program
 - i. Students want to show up to school
 - j. The best teachers are attracted to our schools

- k. Facilities support the learning of all students
 - l. They are easy for teachers to use with sufficient space and updated tech
 - m. They build a sense of community
 - n. They invite participation by students, staff, and community
 - o. They enable nutritious food to be served to our community
 - p. They solve hard problems
 - q. They provide a safe place to share concerns
 - r. Support academics, arts, and athletics
 - s. Innovative infrastructure
 - t. Inspiring spaces
 - u. Students want to be there
 - v. They enhance the neighborhood
 - w. They facilitate and encourage learning
 - x. They inspire collaboration and creativity
 - y. They provide safe, warm, and welcoming spaces that enhance our staff's ability to teach and inspire our students to reach their fullest potential
 - z. They are a community asset
 - aa. They are accessible to young and old
 - bb. They bring people together in a safe environment
 - cc. They are designed to serve the entire community
 - dd. Students want to use them
2. Our greatest aspirations are...
- a. Safe, comfortable, welcoming, properly equipped schools that enable students and teachers to thrive
 - b. We leave the world in a better place than we found it
 - c. Well maintained facilities
 - d. Sustainable building practices
 - e. Provide an educational environment that encourages learning and where everyone feels safe
 - f. Our schools are as beautiful as our natural surroundings
 - g. Schools are spaces people want to learn and work in
 - h. Facilities are maintained in a highly exceptional way at best cost available
 - i. Students are back to learning in an emergency situation
 - j. On site maintenance is available 24/7
 - k. Net zero energy using best current technology
 - l. Affordable, efficient, sustainable, growth adjustable
 - m. Highly efficient and net zero
 - n. Modern and flexible
 - o. Students participate in their own learning experience
 - p. We have schools that will be successful for multiple generations
 - q. Adaptable for future student study needs
 - r. Manageable facilities
 - s. Clearsky availability
 - t. Transportation is easy for people to walk/bike/drive
 - u. Fully accessible, attractive, and durable facilities that are flexible and support sustainability goals and best teaching practices
 - v. High quality infrastructure that supports our whole community and staff
3. In 10 years, the Lake Oswego School District's facilities will...
- a. Be accessible to all
 - b. Produce more energy than they use
 - c. Be in great condition
 - d. Continue to be efficient operations
 - e. Wow all who enter and use them
 - f. Flexible enough to be updated and meet changing needs of students & teachers

- g. Be a reason why people move their families to LO
 - h. Be flexible enough to adapt with the times
 - i. Feel like they were built that year!
 - j. Continue to be well maintained
 - k. Outdoor athletic & learning spaces (fields maintained)
 - l. On site housing for new teachers transitioning to the district
 - m. Safe & attractive in the neighborhood (enhance the neighborhood)
 - n. Have robust infrastructure to enable LOSD to continue leading in all areas of education
 - o. Have equitable building conditions across the building
 - p. Be timeless and able to accommodate to growth or decline, flexibility of community educational needs
 - q. Be fully accessible, attractive, durable facilities that support sustainability and best teaching practices
 - r. Be operationally carbon free
 - s. Continue to be an example of excellence in educational facilities, efficient, sustainable, and resilient buildings in our community
 - t. Be able to accommodate wide variety of student interests
 - u. So flexible we never consider redrawing boundaries again
 - v. House teachers
 - w. Be models of net zero resiliency that will be copied statewide
- After the online survey responses are added to these lists, the major theme will be summarized and given to the committee to prioritize in a digital survey.

2020 LRFP Recommendations

- Each member of the committee was provided a hardcopy of the 2020 Long Range Facility Plan. The committee at the time provided two recommendations. The first includes capital improvements for the first four years (i.e. the 2021 bond). The second includes improvements for the following six.
 - Maintain neighborhood elementary schools
 - Continue to invest in large, flexible, & adaptable spaces for CTE & STEM
 - Finalize the Master Plan, prioritize the other LOSD facilities including the Admin building, Transportation, and Technology facilities
 - Invest in athletic and play facilities
 - Consider the long-term needs of the Lake Grove school campus
 - Perform district-wide upgrades
 - Perform cost/benefit opportunity analysis of all properties
 - Advise on facility implications of new programs and initiatives
 - Explore community partnerships that benefit LOSD and the citizens of LO at large
- The committee discussed the various needs at all properties (see attached planning board), work that was completed in the 2017 and 2021 bonds, and work that is yet to be done.
 - The Lake Grove campus is a high need facility, and a property with high potential for development in the Lake Grove improvement area
 - Forest Hills elementary is also a high need facility, being of the same age as Lake Grove and with similar limitations.
 - Growing capacity and needs at the high schools for STEM programs
 - Applying the educational specification for elementary schools that was developed for River Grove to drive changes to all other elementary schools. One major difference is multipurpose rooms/cafeterias.
 - Meeting the needs of other district properties like the aging admin building
- The committee needs more information about some of these initiatives like STEM/CTE in order to provide recommendations. When can we meet with those program specialists to get that information? What other programs do we need to understand more deeply?

Next Steps

- An online poll will be sent to members to select the best times for future meetings, with a goal of 6 additional meetings in Jan/Feb/March of 2024
- An online survey will be sent so that absent members may provide input on the three visioning questions.

Submitted by,
Rebecca Stuecker, AIA ALEP
Arcadis Architects Inc.

Attachments: Sign-In Sheet
Schedule Handout
District Properties Handout
Meeting Presentation

LOSD 2021



Long Range Facility Planning Committee Meeting

November 15, 2023- Central Office Boardroom

4:00 PM

MEMBER SIGN-IN SHEET

COMMITTEE MEMBER	MEMBER SIGNATURE
Benn, Guy	
Brown, Bruce	
Clements, Courtney	
Coyle, Laura	
Ha, Wayne	
Haladay, Miles	
McCreath, Christy	
Quandt, Erin	
Sasik, Marci	
Spear, Cyndi	
Vandenberg, Tony	
Hansen, Debbie	
Schiele, Jennifer	
Ketzler, Stuart	
Larson, Mary Kay	
Hartman, Liz	
Verdick, Rachel	
Strecker, Rebecca	

LOSD 2021: Building our future, together.

Lake Oswego School District						2024												2025										
2024 Long Range Plan & Capital Improvement Program Proposed Schedule		Sept.	Oct.	Nov.	Dec.	Jan.	Feb	March	April	May	June	July	Aug.	Sept.	Oct.	Nov.	Dec.	Jan.	Feb	March	April	May	June	July	Aug.	Sept.	Oct.	Nov.
ASSESSMENTS Develop the Facility Needs	Facility Assessments & Identifying Infrastructure Needs																											
	Educational Adequacy Assessments & Capacity / Utilization Analysis																											
	Arcadis Develop FCA Report for Review, Input, and Approval																											
LONG-RANGE PLANNING COMMITTEE Develop facility recommendations to meet the current and future needs of the District	Meeting #1 Kickoff: Committee Charge, The Bond Process and Previous LRFP Recommendations, and Vision Workshop																											
	Meeting #2: District Initiatives; STEM, Sustainability, Infrastructure, Athletics, Safety, etc.																											
	Meeting #3: Review of Preliminary Assessment results, Develop Options for future bond projects and Master Plan for district properties																											
	Meeting #4: Prioritize Long-Range Plan Options, Refine																											
	Meeting #5: Prioritize Long-Range Plan Options, Refine																											
	Meeting #6: Prioritize Long-Range Plan Options, Refine																											
	Meeting #7: Develop Final Recommendations																											
	Arcadis Develop LRFP Report for Committee Review, Input, and Approval																											
BOND PLANNING COMMITTEE Develop a capital improvement recommendation for voter consideration	Board Presentation & Adoption of the LRFP																											
	Meeting #1: Kickoff & Review LRFP Recommendations																											
	Meeting #2: Prioritization, Project Costs, & Bond Capacity Options																											
	Meeting #3: Review Bond Package Options & Community Feedback																											
	Meeting #4: Review Bond Package Options & Community Feedback																											
	Meeting #5: Finalize Bond Package																											
BOND ELECTION PROCESS	Board Presentation & Bond Recommendation																											
	Campaign*																											
	LRFP submitted to ODE (Due December 1 for May election, July 1 for November election)																											
	OSCIM Grant Application (Due December 15 for May election, July 15 for November election)																											
	Develop Voter Pamphlet statement with Bond Counsel																											
	Develop Ballot Title w/ Bond Counsel, Board Approves Ballot Title, Last Day for Request for Ballot Title (SEL 805) (81st day before election)																											
	Last Day for Notice of Measure Election (SEL 803) (61st day before election)																											
	Ballots Mailed to In-State Voters																											
	Bond Election																											

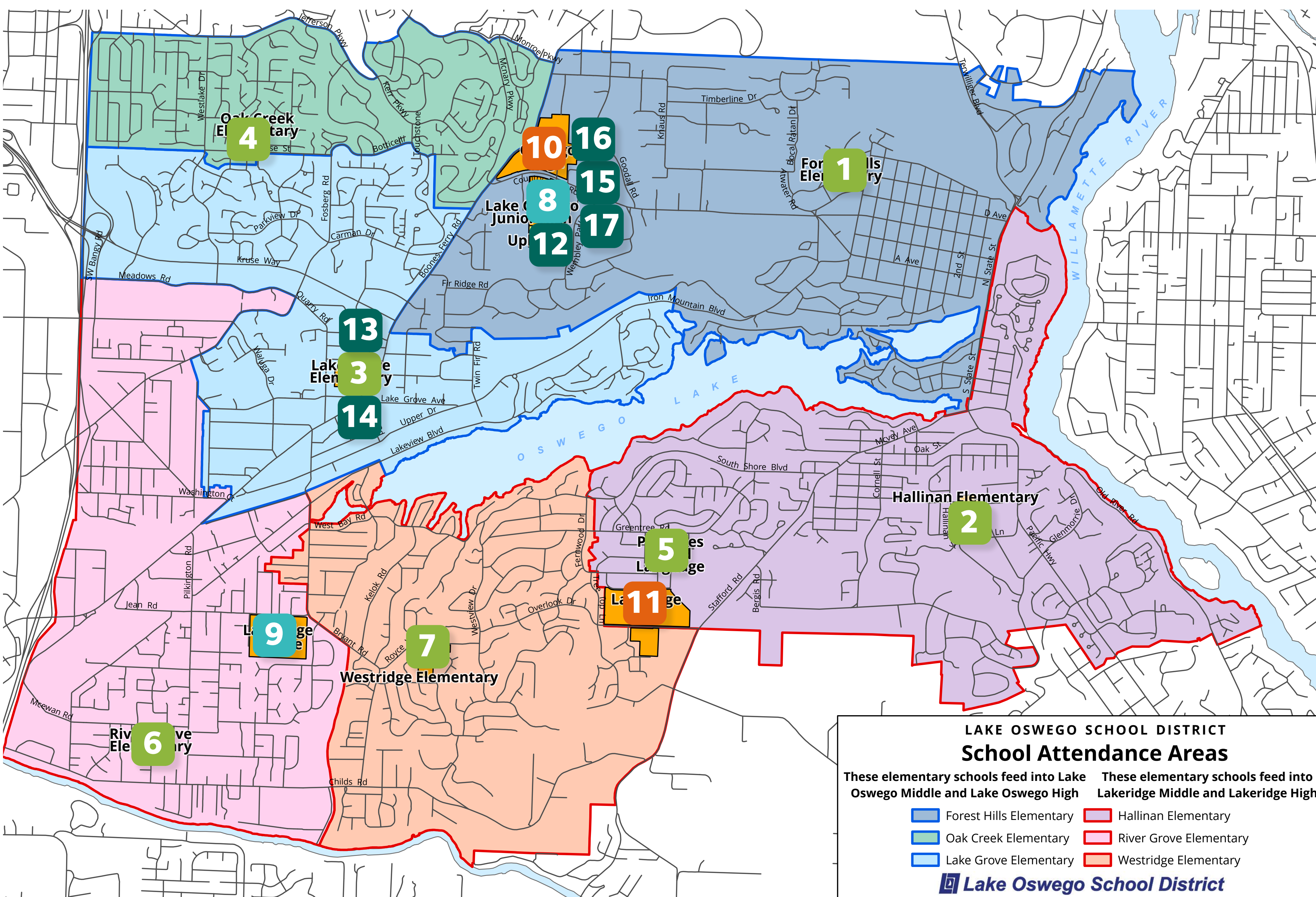
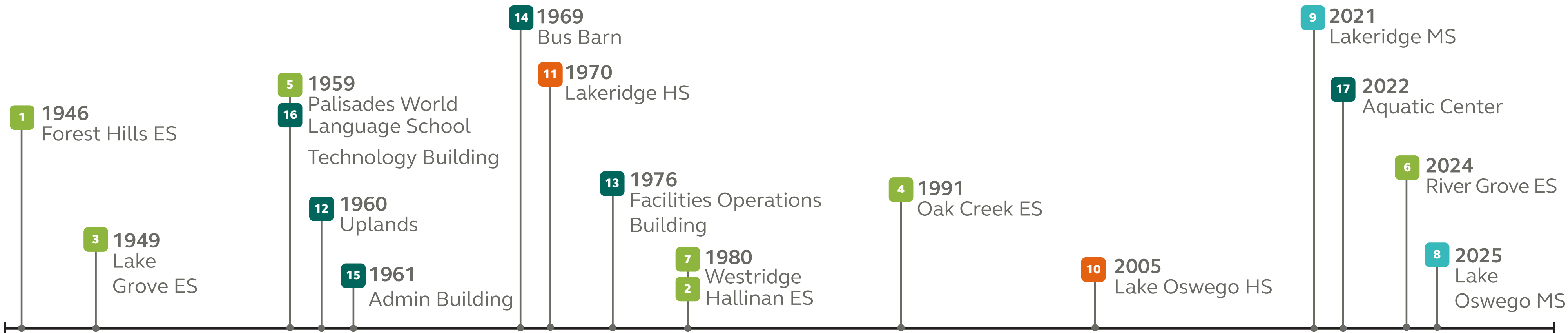
*If a Political Action Committee is used to support the measure, the PAC must file a Statement of Organization within three days of receiving a contribution or making the first expenditure. This must take place before the measure is officially filed with the county clerk. <https://sos.oregon.gov/elections/Pages/campaigncommittee.aspx>

Resources:
 OSBA Bond & Local Option Election Process <https://www.osba.org/Resources/Article/Bonds.aspx>
 Secretary of State Elections Calendar <https://data.oregon.gov/Administrative/Oregon-Elections-Calendar/i8gc-cakg>
 Oregon Department of Education OSCIM Grant <https://www.oregon.gov/ode/schools-and-districts/grants/Pages/OSCIM-Program.aspx>

LAKE OSWEGO SCHOOL DISTRICT

LONG-RANGE PLANNING

Years of Original Construction



				Capital Construction Bonds		
				2017	2021	2025
Elementary Schools	1	Forest Hills Elementary School		Seismic, Security, Technology, and STEM Program Upgrades	General Upgrades & Repairs	
	2	Hallinan Elementary School		Major Renovation, New Addition. Seismic, Security, Technology, and STEM Program Upgrades	General Upgrades & Repairs	
	3	Lake Grove Elementary School		Seismic, Security, Technology, and STEM Program Upgrades	General Upgrades & Repairs	
	4	Oak Creek Elementary School		Major Renovation, Envelope Replacement. Seismic, Security, Technology, Playground, and STEM Program Upgrades	General Upgrades & Repairs	
	5	Palisades World Language School		Security and STEM Program Upgrades	Major Renovation, Envelope Upgrades. Seismic, Security, Technology, Furniture, Playground, and STEM Program Upgrades	
	6	River Grove Elementary School		Seismic, Security, Technology, and STEM Program Upgrades	Replaced	
	7	Westridge Elementary School		Major Renovation, Envelope Upgrades. Seismic, Security, Technology, Playground, and STEM Program Upgrades	General Upgrades & Repairs	
Middle Schools	8	Lake Oswego Middle School		Partial Roofing, Gym Replacement. Security, Technology, ADA, and STEM Program Upgrades	Replaced	
	9	Lakeridge Middle School		Replaced	Outdoor Learning Area	
High Schools	10	Lake Oswego High School		Seismic, Roofing, Security, Technology, and STEM / CTE Program Upgrades	STEM / CTE Program Major Renovations	
	11	Lakeridge High School		Seismic, Roofing, Security, Technology, and STEM / CTE Program Upgrades	STEM / CTE Program Major Renovations	
	12	Uplands		Major Renovation, Envelope Upgrades. Seismic, Security, Technology, Playground, and STEM Program Upgrades	Site Upgrades Including Modulares, Fire Lane, Renovations to serve as LOMS swing site	
	13	Facilities Operations		None	None	
	14	Transportation Facility		None	Replaced (Non-Bond Funds)	
	15	Administration		Technology, Security Upgrades	None	
	16	Technology		None	None	
	17	Aquatic Center		Replaced	None	
Bond Investment				\$187,000,000	\$180,000,000	

Long Range Facility Planning Committee Meeting #1

Lake Oswego School District

November 15, 2023

1

Agenda

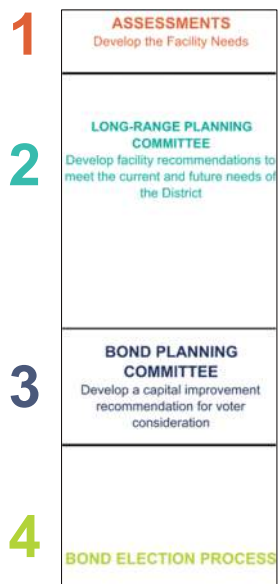
- 4:00** Welcome & Introductions
- 4:10** The Long-Range Planning Process & Schedule
- 4:20** The Committee's Charge & Visioning Workshop
- 4:50** 2020 LRFP Committee Recommendations & Review of District Properties
- 5:25** Next Steps

2

The Process

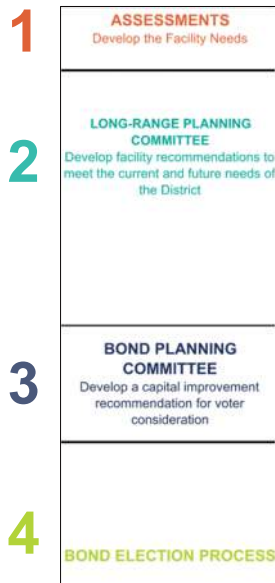
3

Long Range & Bond Planning Process



4

Long Range & Bond Planning Process



Educational Adequacy Assessments

How well do the physical aspects of the building and site support teaching, learning, and the everyday needs of the school community?



SUMMARY OF FINDINGS FOREST HILLS ELEMENTARY SCHOOL

EDUCATIONAL PROGRAM SUPPORT

There are currently 17 teaching stations in Forest Hills Elementary. Teaching stations include classrooms, art, music, and PE spaces. Rooms that are used for pullout supports or shared project areas like Resource rooms, Title I programs, and innovation labs are not included in the teaching station count.

Types of space

Classrooms and gym function well in terms of size, but music is taught in the former multi-purpose room and is inadequately designed to do so. There are problems with acoustics, storage, and flooring.

There is a desire amongst educators and learners for smaller spaces, either within or adjacent to classrooms, which are more quiet than the general classroom and better equipped for small-group learning and group work.

Students express a desire for choice when it comes to modes of working and learning environments. Forest Hills will host the ACCESS program next year, which requires one dedicated classroom. This change will displace Math Advancement and Talented and Gifted (TAG). Those programs require a classroom-sized space but do not require full-time use.



and students, outdated furniture is an impediment to teaching and learning. Typical furniture found in the classrooms is too heavy to move into different configurations, and is too large to allow for a variety of zones. There is a lack of variety of seating and table types, and parent groups have provided similar alternatives to some classrooms, but these are of varying quality and are difficult to maintain. The current furniture does not support group work. Students prefer having a variety of seating types and seek out opportunities to sit on tall stools or the floor when given a choice.

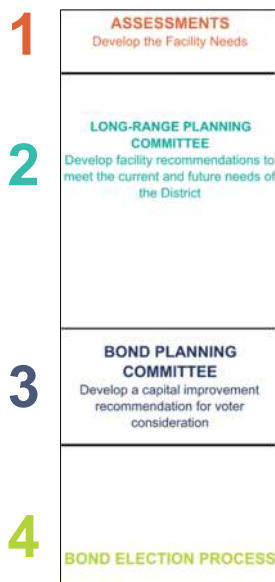
TECHNOLOGY

ARCADIS + Lake Oswego School District

Long Range Facility Planning Committee Meeting #1 11.15.2023

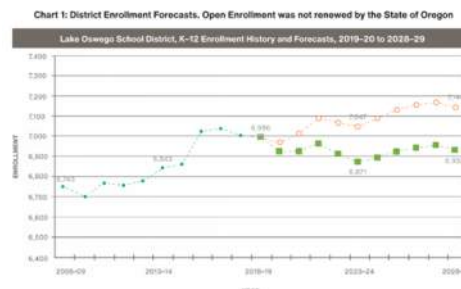
5

Long Range & Bond Planning Process



Educational Adequacy Assessments

How well do the physical aspects of the building and site support teaching, learning, and the everyday needs of the school community?

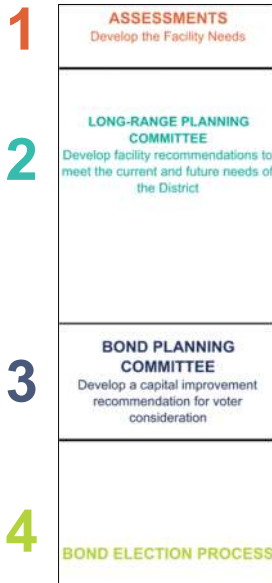


Enrollment Projections

Capacity Analysis

School Name	Current Enrollment (June 2023)	Max Building Teaching Station Capacity	Available Classroom Teaching Station Capacity	Total Available Capacity	Projected 2024 Enrollment	Projected 2024 Total Available Capacity	Projected 2029 Enrollment	Projected 2029 Total Available Capacity
Forest Hills	528	524	5	529	528	529	528	529
Joe Foweraker	453	514	130	643	453	643	453	643
West Grove	375	352	18	373	375	373	375	373
Albion	528	501	18	519	528	519	528	519
West Grove	375	352	18	373	375	373	375	373
Forest Hills	528	524	5	529	528	529	528	529
Joe Foweraker	453	514	130	643	453	643	453	643
West Grove	375	352	18	373	375	373	375	373
Albion	528	501	18	519	528	519	528	519
West Grove	375	352	18	373	375	373	375	373
Forest Hills	528	524	5	529	528	529	528	529
Joe Foweraker	453	514	130	643	453	643	453	643
West Grove	375	352	18	373	375	373	375	373
Albion	528	501	18	519	528	519	528	519
West Grove	375	352	18	373	375	373	375	373
Forest Hills	528	524	5	529	528	529	528	529
Joe Foweraker	453	514	130	643	453	643	453	643
West Grove	375	352	18	373	375	373	375	373
Albion	528	501	18	519	528	519	528	519
West Grove	375	352	18	373	375	373	375	373
Forest Hills	528	524	5	529	528	529	528	529
Joe Foweraker	453	514	130	643	453	643	453	643
West Grove	375	352	18	373	375	373	375	373
Albion	528	501	18	519	528	519	528	519
West Grove	375	352	18	373	375	373	375	373
Forest Hills	528	524	5	529	528	529	528	529
Joe Foweraker	453	514	130	643	453	643	453	643
West Grove	375	352	18	373	375	373	375	373
Albion	528	501	18	519	528	519	528	519
West Grove	375	352	18	373	375	373	375	373
Forest Hills	528	524	5	529	528	529	528	529
Joe Foweraker	453	514	130	643	453	643	453	643
West Grove	375	352	18	373	375	373	375	373
Albion	528	501	18	519	528	519	528	519
West Grove	375	352	18	373	375	373	375	373
Forest Hills	528	524	5	529	528	529	528	529
Joe Foweraker	453	514	130	643	453	643	453	643
West Grove	375	352	18	373	375	373	375	373
Albion	528	501	18	519	528	519	528	519
West Grove	375	352	18	373	375	373	375	373
Forest Hills	528	524	5	529	528	529	528	529
Joe Foweraker	453	514	130	643	453	643	453	643
West Grove	375	352	18	373	375	373	375	373
Albion	528	501	18	519	528	519	528	519
West Grove	375	352	18	373	375	373	375	373
Forest Hills	528	524	5	529	528	529	528	529
Joe Foweraker	453	514	130	643	453	643	453	643
West Grove	375	352	18	373	375	373	375	373
Albion	528	501	18	519	528	519	528	519
West Grove	375	352	18	373	375	373	375	373
Forest Hills	528	524	5	529	528	529	528	529
Joe Foweraker	453	514	130	643	453	643	453	643
West Grove	375	352	18	373	375	373	375	373
Albion	528	501	18	519	528	519	528	519
West Grove	375	352	18	373	375	373	375	373
Forest Hills	528	524	5	529	528	529	528	529
Joe Foweraker	453	514	130	643	453	643	453	643
West Grove	375	352	18	373	375	373	375	373
Albion	528	501	18	519	528	519	528	519
West Grove	375	352	18	373	375	373	375	373
Forest Hills	528	524	5	529	528	529	528	529
Joe Foweraker	453	514	130	643	453	643	453	643
West Grove	375	352	18	373	375	373	375	373
Albion	528	501	18	519	528	519	528	519
West Grove	375	352	18	373	375	373	375	373
Forest Hills	528	524	5	529	528	529	528	529
Joe Foweraker	453	514	130	643	453	643	453	643
West Grove	375	352	18	373	375	373	375	373
Albion	528	501	18	519	528	519	528	519
West Grove	375	352	18	373	375	373	375	373
Forest Hills	528	524	5	529	528	529	528	529
Joe Foweraker	453	514	130	643	453	643	453	643
West Grove	375	352	18	373	375	373	375	373
Albion	528	501	18	519	528	519	528	519
West Grove	375	352	18	373	375	373	375	373
Forest Hills	528	524	5	529	528	529	528	529
Joe Foweraker	453	514	130	643	453	643	453	643
West Grove	375	352	18	373	375	373	375	373
Albion	528	501	18	519	528	519	528	519
West Grove	375	352	18	373	375	373	375	373
Forest Hills	528	524	5	529	528	529	528	529
Joe Foweraker	453	514	130	643	453	643	453	643
West Grove	375	352	18	373	375	373	375	373
Albion	528	501	18	519	528	519	528	519
West Grove	375	352	18	373	375	373	375	373
Forest Hills	528	524	5	529	528	529	528	529
Joe Foweraker	453	514	130	643	453	643	453	643
West Grove	375	352	18	373	375	373	375	373
Albion	528	501	18	519	528	519	528	519
West Grove	375	352	18	373	375	373	375	373
Forest Hills	528	524	5	529	528	529	528	529
Joe Foweraker	453	514	130	643	453	643	453	643
West Grove	375	352	18	373	375	373	375	373
Albion	528	501	18	519	528	519	528	519
West Grove	375	352	18	373	375	373	375	373
Forest Hills	528	524	5	529	528	529	528	529
Joe Foweraker	453	514	130	643	453	643	453	643
West Grove	375	352	18	373	375	373	375	373
Albion	528	501	18	519	528	519	528	519
West Grove	375	352	18	373	375	373	375	373
Forest Hills	528	524	5	529	528	529	528	529
Joe Foweraker	453	514	130	643	453	643	453	643
West Grove	375	352	18	373	375	373	375	373
Albion	528	501	18	519	528	519	528	519
West Grove	375	352	18	373	375	373	375	373
Forest Hills	528	524	5	529	528	529	528	529
Joe Foweraker	453	514	130	643	453	643	453	643
West Grove	375	352	18	373	375	373	375	373
Albion	528	501	18	519	528	519	528	519
West Grove	375	352	18	373	375	373	375	373
Forest Hills	528	524	5	529	528	529	528	529
Joe Foweraker	453	514	130	643	453	643	453	643
West Grove	375	352	18	373	375	373	375	373
Albion	528	501	18	519	528	519	528	519
West Grove	375	352	18	373	375	373	375	373
Forest Hills	528	524	5	529	528	529	528	529
Joe Foweraker	453	514	130	643	453	643	453	643
West Grove	375	352	18	373	375	373	375	373
Albion	528	501	18	519	528	519	528	519
West Grove	375	352	18	373	375	373	375	373
Forest Hills	528	524	5	529	528	529	528	529
Joe Foweraker	453	514	130	643	453	643	453	643
West Grove	375	352	18	373	375	373	375	373
Albion	528	501	18	519	528	519	528	519
West Grove	375	352	18	373	375	373	375	373
Forest Hills	528	524	5	529	528	529	528	529
Joe Foweraker	453	514	130	643	453	643	453	643
West Grove	375	352	18	373	375	373	375	373
Albion	528	501	18	519	528	519	528	519
West Grove	375	352	18	373	375	373	375	373
Forest Hills	528	524	5	529	528	529	528	529
Joe Foweraker	453	514	130	643	453	643	453	643
West Grove	375	352	18	373	375	373	375	373
Albion	528	501	18	519	528	519	528	519
West Grove	375	352	18	373	375	373	375	373
Forest Hills	528	524	5	529	528	529	528	529
Joe Foweraker	453	514	130	643	453	643	453	643
West Grove	375	352	18	373	375	373	375	373
Albion	528	501	18	519	528	519	528	519
West Grove	375	352	18	373	375	373	375	373
Forest Hills	528	524	5	529	528	529	528	529
Joe Foweraker	453	514	130	643	453	643	453	643
West Grove	375	352	18	373	375	373	375	373
Albion	528	501	18	519	528	519	528	519
West Grove	375	352	18	373	375	373	375	373
Forest Hills	528	524	5	529	528	529	528	529
Joe Foweraker	453	514	130	643	453	643	453	643
West Grove	375	352	18	373	375	373	375	373
Albion	528	501	18	519	528	519	528	519
West Grove	375	352	18	373	375	373	375	373
Forest Hills	528	524	5	529	528	529	528	529
Joe Foweraker	453	514	130	643	453	643	453	643
West Grove	375	352	18	373	375	373	375	373
Albion	528	501	18	519	528	519	528	519
West Grove	375	352	18	373	375	373	375	373
Forest Hills	528	524	5	529	528	529	528	529
Joe Foweraker	453	514	130	643	453	643	453	643
West Grove	375	352	18	373	375	373	375	373
Albion	528	501	18	519	528	519	528	519
West Grove	375	352	18	373	375	373	375	373
Forest Hills	528	524	5	529	528	529	528	529
Joe Foweraker	453	514	130	643	453	643	453	643
West Grove	375	352	18	373	375	373	375	373
Albion	528	501	18	519	528	519	528	519
West Grove	375							

Long Range & Bond Planning Process



Educational Adequacy Assessments

How well do the physical aspects of the building and site support teaching, learning, and the everyday needs of the school community?



FACILITY CONDITION INDEX



RECOMMENDATIONS	QUANTITY	UNIT	COST	PRIORITY
Paint and repair stairs	200	SF	\$0.21	1
Repair, sand, and seal concrete	100	SF	\$0.04	1
Repair concrete floor	100	SF	\$0.15	1
TOTAL COST			\$5,457	
Roofing				
Condition in concrete slab, in side towers, observed, repair	1	SF	\$145	1
TOTAL COST			\$145	
Roofing				
Repair 24, 18" x 18" concrete slab, in side towers, observed, repair	20	SF	\$145	1
Repair roof by 24" x 18" concrete slab, in side towers, observed, repair	10	SF	\$145	1
Condition in concrete slab, in side towers, observed, repair	1	SF	\$145	1
Condition in concrete slab, in side towers, observed, repair	1	SF	\$145	1
Condition in concrete slab, in side towers, observed, repair	1	SF	\$145	1
TOTAL COST			\$4,160,944	
Roofing				
Condition in concrete slab, in side towers, observed, repair	1	SF	\$145	1
Condition in concrete slab, in side towers, observed, repair	1	SF	\$145	1
Condition in concrete slab, in side towers, observed, repair	1	SF	\$145	1
Condition in concrete slab, in side towers, observed, repair	1	SF	\$145	1
Condition in concrete slab, in side towers, observed, repair	1	SF	\$145	1
TOTAL COST			\$475,888	
Roofing				
Repair drinking fountains, hot water (discharging in drinking fountains)	1	HR	\$1,367.10	1
TOTAL COST			\$1,367.10	
TOTAL COST TO REPAIR			\$5,925,391	
TOTAL COST TO REPLACE			\$142,457,660	
UFGI			6,047,733	

7

Long Range & Bond Planning Process

Lake Oswego School District		2024												2025														
2024 Long Range Plan & Capital Improvement Program Proposed Schedule		Sept.	Oct.	Nov.	Dec.	Jan.	Feb.	March	April	May	June	July	Aug.	Sept.	Oct.	Nov.	Dec.	Jan.	Feb.	March	April	May	June	July	Aug.	Sept.	Oct.	Nov.
ASSESSMENTS <i>Develop the Facility Needs</i>	Facility Assessments & Identifying Infrastructure Needs																											
	Educational Adequacy Assessments & Capacity / Utilization Analysis																											
LONG-RANGE PLANNING COMMITTEE <i>Develop facility recommendations to meet the current and future needs of the District</i>	ARCADIS Develop FCA Report for Review, Input, and Approval																											
	Meeting #1 Kickoff: Committee Charge, The Bond Process and Previous LRFP Recommendations, and Vision Workshop																											
	Meeting #2: District Initiatives: STEM, Sustainability, Infrastructure, Athletics, Safety, etc.																											
	Meeting #3: Review of Preliminary Assessment results, Develop Options for future bond projects and Master Plan for district properties																											
	Meeting #4: Prioritize Long-Range Plan Options, Refine																											
	Meeting #5: Prioritize Long-Range Plan Options, Refine																											
	Meeting #6: Prioritize Long-Range Plan Options, Refine																											
	Meeting #7: Develop Final Recommendations																											
	ARCADIS Develop LRFP Report for Committee Review, Input, and Approval																											
	BOND PLANNING COMMITTEE <i>Develop a capital improvement recommendation for voter consideration</i>	Board Presentation & Adoption of the LRFP																										
Meeting #1: Kickoff & Review LRFP Recommendations																												
Meeting #2: Prioritization, Project Costs, & Bond Capacity Options																												
Meeting #3: Review Bond Package Options & Community Feedback																												
Meeting #4: Review Bond Package Options & Community Feedback																												
BOND ELECTION PROCESS	Meeting #5: Finalize Bond Package																											
	Board Presentation & Bond Recommendation																											
	Campaign*																											
	LRFP submitted to ODE (Due December 1 for May election, July 1 for November election)																											
	OSCM Grant Application (Due December 15 for May election, July 15 for November election)																											
	Develop Voter Pamphlet statement with Bond Counsel																											
	Develop Ballot Title w/ Bond Counsel, Board Approves Ballot Title, Last Day for Request for Ballot Title (SEL 805) (at least 30 days before election)																											
	Last Day for Notice of Measure Election (SEL 803) (at least 30 days before election)																											
	Ballots Mailed to In-State Voters																											
	Bond Election																											

*If a Political Action Committee is used to support the measure, the PAC must file a Statement of Organization within three days of receiving a contribution or making the first expenditure. This must take place before the measure is officially filed with the county clerk. <https://www.oregon.gov/ODE/About/PoliticalActionCommittees/Pages/faq.aspx>

Resources:
 ODEA Bond & Local Option Election Process: <https://www.oregon.gov/ODE/About/PoliticalActionCommittees/Pages/faq.aspx>
 Secretary of State Election Calendar: <https://www.oregon.gov/ODE/About/PoliticalActionCommittees/Pages/faq.aspx>
 Oregon Department of Education OSCM Grant: <https://www.oregon.gov/ODE/About/PoliticalActionCommittees/Pages/faq.aspx>

8

Building a Vision

9

The Committee's Mission

“Our mission is to facilitate and support teaching and learning through the maintenance and improvement of our physical environment.”

2020 Long Range Facility Plan Chapter 3: The Committee

10

The Committee's Charge

TO REPRESENT THE ENTIRE LOSD COMMUNITY

The Committee's Charge

TO REPRESENT THE ENTIRE LOSD COMMUNITY

TO CONSIDER CURRENT AND FUTURE GENERATIONS

The Committee's Charge

TO REPRESENT THE ENTIRE LOSD COMMUNITY

TO CONSIDER CURRENT AND FUTURE GENERATIONS

TO DEVELOP A PLAN FOR FACILITY IMPROVEMENTS AND
MAKE AN INFORMED RECOMMENDATION TO THE BOARD

The Committee's Vision

SCHOOL FACILITIES CONTRIBUTE TO THE DISTRICT'S
MISSION AND VISION WHEN...

Mission

We are a learning community
dedicated to creating a culture of
belonging and educational excellence.

Vision

We inspire students to be critical thinkers
who are empowered to contribute
positively in a complex world.

The Committee's Vision

**SCHOOL FACILITIES CONTRIBUTE TO THE DISTRICT'S
MISSION AND VISION WHEN...**

OUR GREATEST ASPIRATIONS ARE...

The Committee's Vision

**SCHOOL FACILITIES CONTRIBUTE TO THE DISTRICT'S
MISSION AND VISION WHEN...**

OUR GREATEST ASPIRATIONS ARE...

**IN 10 YEARS, THE LAKE OSWEGO SCHOOL DISTRICT'S
FACILITIES WILL...**

Planning For The Future

17

2020 LRFP Recommendations Chapter 6

Recommendation 1: The First Four Years
(i.e. the 2021 Bond)

Recommendation 2: The Next Six Years

"The bond team really listened to us, they worked right alongside us and really set us up for success!"

ARCADIS + Lake Oswego School District

LONG-RANGE FACILITY PLAN 2020

Lake Oswego School District

IBI Group Architects, Inc.



Long Range Facility Planning Committee Meeting #1 11.15.2023

18

2020 LRFP Recommendations Chapter 6

Recommendation 1: The First Four Years
(i.e. the 2021 Bond)

Recommendation 2: The Next Six Years

1. Maintain neighborhood elementary schools
2. Continue to invest in large, flexible & adaptable spaces for CTE & STEM
3. Finalize the Master Plan, prioritize the other LOSD facilities including Administration, Bus Barn, & Technology facilities.

ARCADIS + Lake Oswego School District

LONG-RANGE FACILITY PLAN 2020

Lake Oswego School District

IBI Group Architects, Inc.



Long Range Facility Planning Committee Meeting #1 11.15.2023

19

2020 LRFP Recommendations Chapter 6

Recommendation 1: The First Four Years
(i.e. the 2021 Bond)

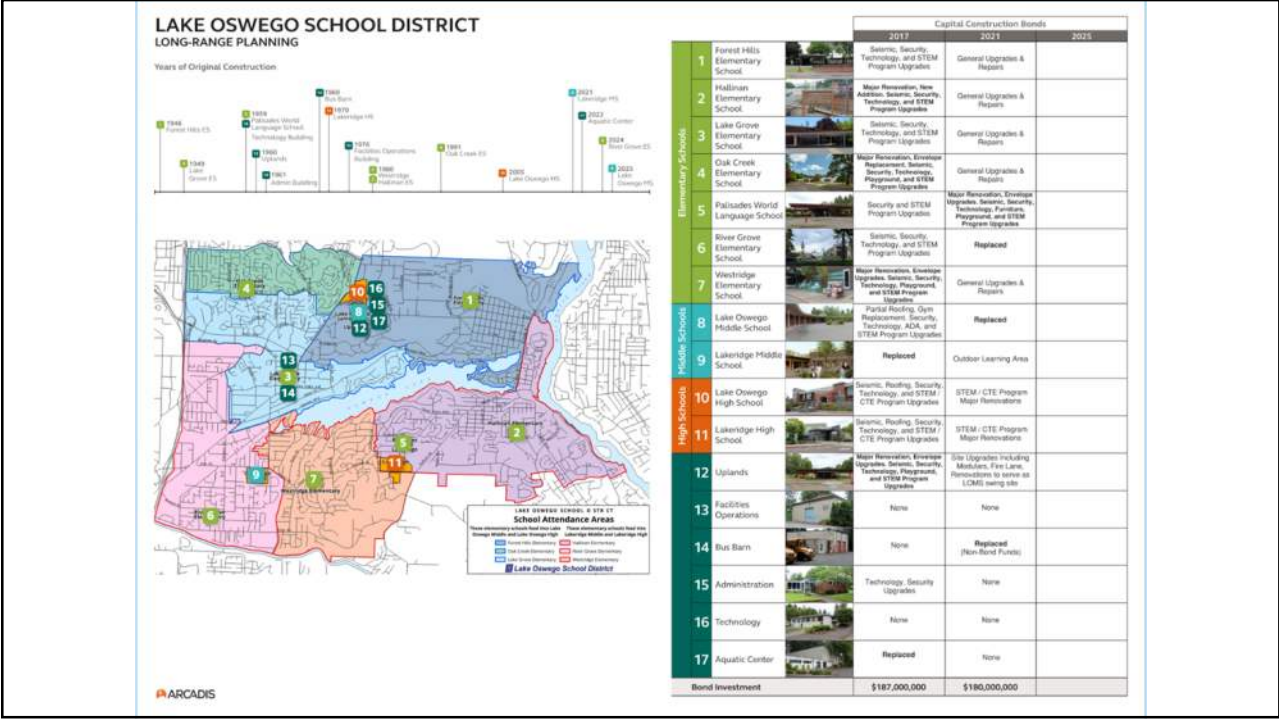
Recommendation 2: The Next Six Years

1. Maintain neighborhood elementary schools
2. Continue to invest in large, flexible & adaptable spaces for CTE & STEM
3. Finalize the Master Plan, prioritize the other LOSD facilities including Administration, Bus Barn, & Technology facilities.
4. Invest in Athletic and Play facilities
5. Consider the long-term needs of the Lake Grove School Campus within the improved business district
6. Perform district-wide upgrades
7. Perform cost/benefit/opportunity analysis of all LOSD properties
8. Advise on facility implications of new programs and initiatives
9. Explore community partnerships that benefit LOSD and the citizens of Lake Oswego at large.

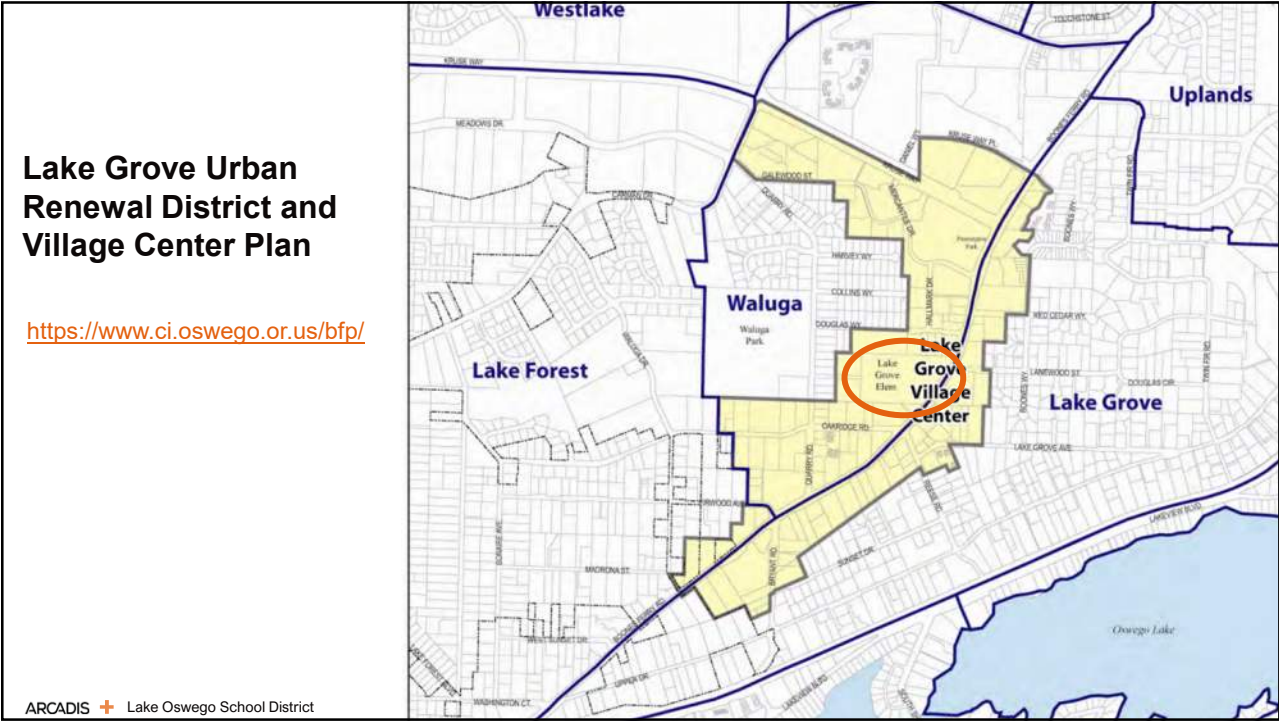
ARCADIS + Lake Oswego School District

Long Range Facility Planning Committee Meeting #1 11.15.2023

20



21



22



23

Next Steps

24

Future Committee Meetings: 2024

Meetings #2 & #3 January '24

Meetings #4 & #5 February '24

Meeting #6 & #7 (if needed) March '24

January 2024							February 2024							March 2024						
S	M	T	W	T	F	S	S	M	T	W	T	F	S	S	M	T	W	T	F	S
	1	2	3	4*	5	6					1*	2	3						1	2
7	8	9	10	11*	12	13	4	5	6	7	8*	9	10							
14	15	16	17	18*	19	20	11	12	13	14	15*	16	17	3	4	5	6	7*	8	9
21	22	23	24	25*	26	27	18	19	20	21	22*	23	24	10	11	12	13	14*	15	16
28	29	30	31				25	26	27	28	29*			17	18	19	20	21*	22	23
														24	25	26	27	28	29	30
														31						

