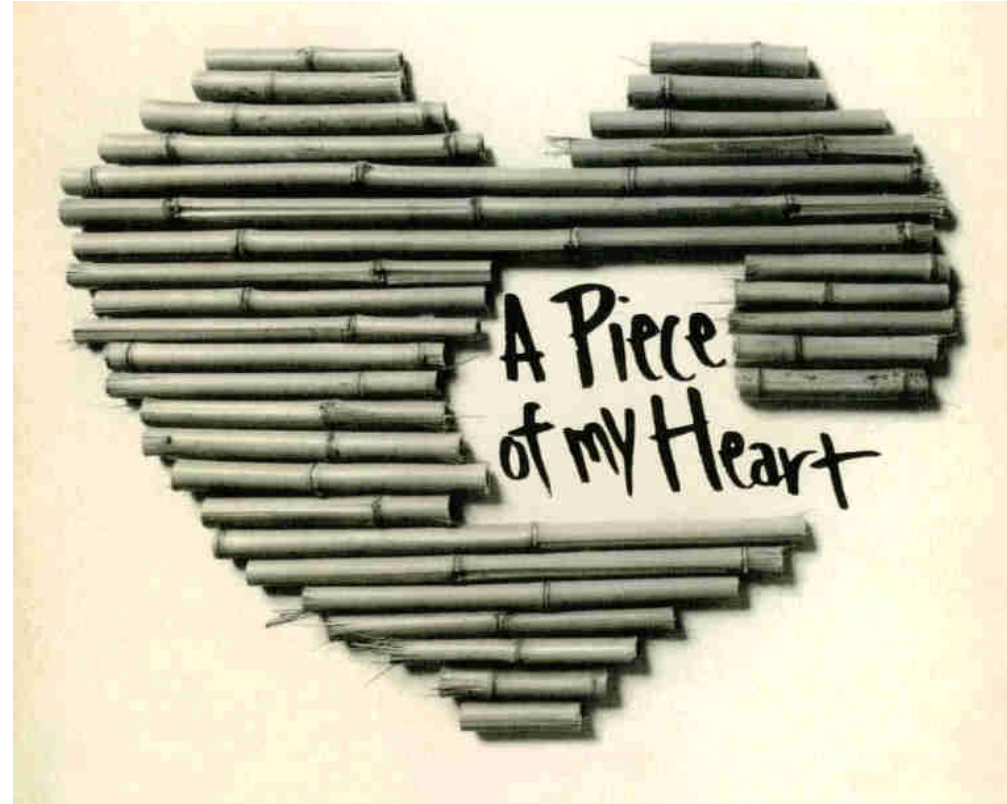


## *Special Thanks*

- The Drama Mamas & Drama Dads
- The Parents of Cast & Crew for the food, time, support, & patience for the long hours
- The NCHS Administration:  
Dr. Nuckolls, Mr. Bollman, Mr. Gourley, Mr. Larsen, Ms. Musson
- The NCHS Custodial Staff, especially  
Tom Rockwell & Zach Pacha
- The NCHS Music Department:  
Ben Luginbuhl, Jo Lynn Robinson, Lance Meadows, Josh Masterman
- The NCHS faculty for support (especially during tech week)
- Beth Topping
- John Cargill
- Kelly Keogh
- Sergeant William D. Wilson  
of the United States Marine Corps
- Spouse

Thank you for supporting the arts in Unit 5. The discipline and creative problem-solving skills provided by music, dance, art and theatre provide our students with skills that serve them the rest of their lives in many different careers. Your participation in this production is an investment in our community, and our future.

# Normal Community High School Presents:



**By Shirley Lauro**

**March 10, 11, 12**

**7:00 NCHS Auditorium**

**\$3- Students    \$5- Adults**

**\*Mature Themes\***

## NORMAL COMMUNITY HIGH SCHOOL THEATRE HOUSE POLICIES

Welcome to the Normal Community High School theatre. Please take a few moments to familiarize yourself with our house policies.

- Doors will be open to the public one half hour prior to the curtain time.
- Late arrivals may be held in the lobby until a time designated by the director. Late seating is at the discretion of the director and may vary.
- Normal Community High School and its grounds are smoke free.
- Due to contractual agreement, recording devices of any kind are not allowed. Flash photography is strictly prohibited.
- Pagers and cell phones must be turned off.
- A variety of refreshments are available during intermission in the theatre lobby. Please be aware that no food except water is allowed back into the theatre.
- Please do not leave during the performance, as you may not be able to re-enter the theatre during the show.
- Please do not talk during the performance, rattle wrappers, or otherwise disturb fellow audience members and actors.
- Any child four years or older must have a ticket. If you have an infant or toddler, please be considerate and remove them if they are disruptive.
- Anyone needing special seating due to health or physical problems please contact Kevin Yale Vernon at [vernonk@unit5.org](mailto:vernonk@unit5.org), or call 728-5000



**Photography always courtesy of  
NCHS Drama and eScapesPhoto.com**

Get your free NCHS Drama photos  
for Facebook or order prints at great prices  
from the NCHS Drama website:  
<http://www.unit5.org/nchs/drama/>  
and click on "Photos"

To get more information,  
or to see photos from this show,  
stop by the table in the lobby  
during intermission or after the show.

And let eScapes Photo handle  
your senior or holiday family portrait needs.  
Contact [david@escapesphoto.com](mailto:david@escapesphoto.com)  
or visit [escapesphoto.com](http://escapesphoto.com) for more info



The Wall, more formally known as the Vietnam Veteran's Memorial, was dedicated in 1982. There had been national memorials previously, but few had the healing power of The Wall. After years of conflict and denial, The Wall created a physical place where veterans, families and others can find closure. The Vietnam Women's Memorial, however, wasn't erected until 1993. It was created specifically to recognize that women served and suffered in the war, even if there are few to no official records of their time there. The projections you see at the end of the play show both monuments. It is our hope that this play will serve a similar purpose in reminding everyone of those who served in Vietnam.



**Are you an NCHS student who wants to  
become involved, or the parent of a theatre  
student?**

Then check out our web page at:

**[www.unit5.org/nchs/drama](http://www.unit5.org/nchs/drama)**

for all of the latest news, past seasons, photos,  
drama club minutes, links to the state theatre  
festival and more.

## **Krystal D. Taylor**



**Congratulations to Krystal and the team of actors.  
We are so proud of your accomplishments.  
We Love You!  
Dad, Mom, Rashod & Marcus**

## Director's Notes:

In the time when I was searching for a small, edgy, mostly female play for the spring show, I heard a news story on National Public Radio about vets returning from Iraq and Afghanistan. They were experiencing inadequate veterans' facilities, undiagnosed injuries, and increased emotional problems - everything those coming back from Vietnam had endured. The cyclical nature of the irony struck me. Here we are, in a war going on almost ten years now, and young men and women are still coming home asking only for help to pick up their lives again. Once again we are letting them down.

In Vietnam, the women's experience was almost completely ignored. For the first time nurses were on the frontlines, tending to wounded soldiers barely out of high school. As a result, the mortality rate for soldiers brought in with what were once fatal wounds dropped dramatically, but the complexity and severity of the medical care was enormous. Women came back to many of the same problems the grunts did, but no one seemed to notice they had served. Even after The Vietnam Veterans' Memorial went up in '82, the feminine contribution went unnoticed. Finally, in '93, the Vietnam Women's Memorial was erected nearby, with three nurses representing Faith, Charity, and Hope caring for a wounded soldier.

This was a difficult show to produce. In addition to a very brief (four week) schedule, the material is intense and dark. We made some thorny decisions about editing, including keeping the racial epithet involving the character of Leeann. It is vulgar and offensive, but we felt it was so important in revealing the concept of how the person we call the "enemy" is another human being, much like our own families, and much like ourselves.

Each time I direct at this school I am once again impressed with our students. I have seen such hard work, maturity, leadership, dedication, personal responsibility, passion for the art and so much more. I watched them surmount challenges they didn't think they could, and make tough decisions they didn't want to make. I am proud, so very proud, to have worked with these students.

Here is to them, to you for supporting them, and to the generations who have served their country. May they never be controlled by war - never again.

KYV



Mary Kate Moore  
Sophomore



Veronika Bettis  
Sophomore

## What's coming up on the NCHS Stage?

April 7- 9 &  
April 14- 16

Musical:  
*SchoolHouse Rock*

May 6

NCHS Jazz  
Night

May 10

Spring Choir  
Concert

May 12

Senior Band  
Concert

May 13

Senior Spotlight Concert

May 23

Shakespeare Shorts







Jessica Dooley  
Junior

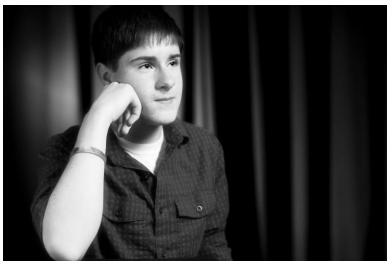


Cheylane Brown  
Sophomore



Gaby Garris  
Sophomore

Cast photos courtesy of eScapes Photo by David Vernon. They have nothing to do with the play, but we had a small cast and a desire to do 40s glamour shots—so we did it!



Jake Muzzarelli  
Sophomore




Kellie Nolan  
Sophomore



Makayla Foley  
Sophomore

## CENTER FOR HOPE

MINISTRIES



Look Who's  
On Streaming Faith!

**COME AND GROW WITH US!**

**SUNDAY SERVICE**  
Sunday School  
9:30 a.m. - 10:30 a.m.

**Worship Service**  
8:00 a.m. - 9:15 a.m.  
10:45 a.m. - 1:00 p.m.

**MID WEEK SERVICE**  
Intercessory Prayer  
6:00 p.m. - 7:00 p.m.

**Bible Study**  
7:00 p.m. - 8:30 p.m.

## CENTER FOR HOPE

MINISTRIES

Bishop Larry Taylor & Elder Desetra Taylor

We are honored to announce that CFH Ministries has partnered with Streaming Faith. You can tune in to our media player by visiting [www.streamingfaith.com](http://www.streamingfaith.com). If you are not currently a member of Streaming Faith, please create a new account. Once you have logged in, complete the following steps:

- Click on the tab at the top of the page that says 'Speakers and Ministries'.
- Then click 'Browse Ministries'. Ministries are listed in alphabetical order. You can find us under 'Center For Hope Ministries On Demand'. This will take you to our information page.

Center For Hope Ministries  
14940 Old Colonial Rd  
Bloomington, IL 61705  
Phone: 309-827-2009 \* Fax: 309-827-2127  
[www.cfhministries.org](http://www.cfhministries.org)

### To Krystal D. Taylor

Center For Hope Ministries proudly salute you for your academic and artistic endeavors. You are so gifted! We celebrate your achievements. We love you dearly!

# Cast List

(in order of appearance)

Martha	Mary Kate Moore*
Mary Jo	Kellie Nolan
Sissy	Cheylane Brown
Whitney	Taylor “Tweak” Walters-Chapman*
Leeann	Makayla Foley*
Steele	Krystal Taylor
Woman 1	Gaby Garris
Woman 2	Veronika Bettis
Musician	Jessica Dooley
Man 1	Spencer Powell*
Man 2	Jake Muzzarelli

\*denotes Member of Thespian Troupe 613



Krystal Taylor  
Senior



Taylor Walters-  
Chapman  
Senior



Spencer Powell  
Senior

## Production & Technical Team

Director	Kevin Yale Vernon
Technical Director	Sean Kerr
Assistant Directors	Nate Titus
	Meg Keogh*
Stage Manager	Spencer Ludwig*
Assistant Stage Managers	Lauren Schmitt
	Taylor Garrett
Light Design	Logan Christensen
Light Board Operator	Asa Church
Sound Design	David Vernon
Pre-show Music	Kelly Keogh
Sound Board Operators	Shelby Taylor
	Emma Wilson
Projectionist	Meg Keogh*
Set Design	Kevin Yale Vernon
	Sean Kerr
Set Construction	Sean Kerr
Costuming	Lauren Guttschow
	Natalie van Dongen
Props	Brianna Roberson
	Natalie van Dongen
Props/Stage Crew	Natalie van Dongen
	Tori Moss
	Saaud Zuberi
Light Crew	Logan Christensen
	Shelby Taylor
	Ian Quistgaard
	Asa Church
Sound Crew	Emma Wilson
	Shelby Taylor
	Greg Bolivar
Hair & Makeup	Lauren Guttschow
	Elizabeth Balch
	Lauren Garvin
	Natalie van Dongen

\*denotes Member of Thespian Troupe 613