

SPECIAL THANKS

- *The Drama Mamas & Drama Dads; I hesitate to name any of you, because I'm sure to forget someone, but I have to do a special shout out to Suzanne Guttschow, Connie Donohue, Melissa Santiago, and Carla van Dongen—this show could never have happened without you*
- *The Parents of Cast & Crew for the food, time, ads, support, & patience for the long hours*
- *The NCHS Administration: Dave Bollman, Nikki Maurer, Dennis Larsen, Josh Fabish, and Anthony Clark*
- *The NCHS Custodial Staff, especially Zach Pacha & Joe Pulliam*
- *The NCHS Music Department: Ben Luginbuhl, Jo Lynn Robinson, Lance Meadows, Chris Bence*
- *The NCHS Theatre Department: Sean Kerr & Beth Topping—it's nice to get to work with the best*
- *John Cargill*
- *The NCHS Drama Club*
- *Bloomington High School Theatre Department*
- *Times Past Restaurant*
- *Avanti's,*
- *Subway*
- *Little Caesar's*
- *The Olive Garden*
- *Spouse*

Thank you for supporting the arts in Unit 5. The discipline and creative problem-solving skills provided by music, dance, art and theatre provide our students with skills that serve them the rest of their lives in many different careers. Your participation in this production is an investment in our community, and our future.

Normal Community High School Theatre
presents



By John Cariani

November 2, 3, 9 & 10, 2012
7 p.m. NCHS Auditorium

Almost, Maine

By John Cariani

November 2, 3, 9, & 10

Almost, Maine is presented by special arrangement with Dramatists Play Service, Inc., New York

ALMOST, MAINE was developed by
The Cape Cod Theatre Project.
Professional Premiere Production:
Portland Stage Company,
Anita Stewart, Artistic Director,
Tami Ramaker, Managing Director.
Originally produced in New York by
Jack Thomas/Bulldog Theatrical and Bruce Payne.



Are you an NCHS student who wants to become involved, or the parent of a student? Then check out our web page at

old.unit5.org/nchs/drama

for all of the latest news, past seasons, photos, drama club minutes, links to the state theatre festival and more.

NORMAL COMMUNITY HIGH SCHOOL THEATRE HOUSE POLICIES

Welcome to the Normal Community High School theatre. Please take a few moments to familiarize yourself with our house policies.

- Doors will be open to the public one half hour prior to the curtain time.
- Late arrivals may be held in the lobby until a time designated by the director. Late seating is at the discretion of the director and may vary.
- Normal Community High School and its grounds are smoke free.
- Due to contractual agreement, recording devices of any kind are not allowed. Flash photography is strictly prohibited.
- Pagers and cell phones must be **turned off**.
- A variety of refreshments are available during intermission in the theatre lobby. Please be aware that no food except water is allowed back into the theatre.
- Please do not leave during the performance, as you may not be able to re-enter the theatre during the show.
- Please do not talk during the performance, rattle wrappers, or otherwise disturb fellow audience members and actors.
- Any child four years or older must have a ticket. If you have an infant or toddler, please be considerate and remove them if they are disruptive.
- Anyone needing special seating due to health or physical problems please contact Kevin Yale Vernon at vernonk@unit5.org

Ob- Gyn Care



Joseph Santiago, MD
Vicki Voegel, PA-C

Obstetrics and Gynecology Care Associates, S.C.

1505 Eastland Drive, Suite 500
Eastland Medical Plaza II, Bloomington IL 61704
309-662-CARE (2273)
www.obgyncare.com

Offering Preventive and minimally invasive gynecological care
Routine and high risk Obstetrics with onsite ultra sound, infertility
evaluations and IUI

3D/4D Ultrasound available for patients and non-patients

Caring Touch Spa offers Swedish and deep tissues massage, pregnancy
massage and body treatments.

Director's Notes

The Aurora Borealis, or the Northern Lights, is the visible result of the collision between charged particles from the sun and the Earth's atmosphere.

That's a very scientific and unromantic description of one of the most beautiful natural phenomenon on the planet. Tonight, in the "town" of Almost, ME, the sun and sky collide with remarkable effects on the people living there. Each one of our characters is discovering a new moment in their lives, all of them pertaining to love. Some of them fall in love, some out of it, some discover their love has been growing all the time, while others find that it's slipped away even while they were fighting to get it back. No matter what the circumstances, each story has just a little bit of magic, a little touch of metaphor or fable that the Northern Lights helps turn from an ordinary event into the lyrical story you'll watch here tonight.

This is an extremely challenging show, both from the acting and technical viewpoints. I'm very proud that our students and staff are able to do a show of this caliber, and very thankful that you are here to allow us to do it. As always, I hope you will consider the benefits of the arts in education as you enjoy the show, and learn as much as we have from this script about reaching out, connecting, and letting go.

Thank you for being a part of it.

KYV

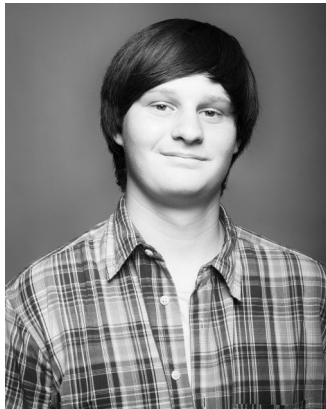
What's coming up on the NCHS Stage?

Spaghetti Supper music fundraiser	Nov 12
Madrigal Dinners	Nov 30-Dec 1
Student One Act auditions	Dec 4 - 6
Band Winter Concert	Dec 4
Choir Holiday Concert	Dec 6
Orchestra Winter Concert	Dec 11

Best of Luck, Lacy!

We are very proud of you.

Love, Mom and Dad.



AJ -

Ba-Zinga!

Love, Dad & Mitch



**Photography always courtesy of
NCHS Drama and eScapesPhoto.com**

Get your free NCHS Drama photos
for Facebook or order prints at great prices
from the NCHS Drama website:
<http://old.unit5.org/nchs/drama/>
and click on "Photos"

To get more information,
or to see photos from this show,
stop by the table in the lobby
during intermission or after the show.

And let eScapes Photo handle
your senior or holiday family portrait needs.
Contact david@escapesphoto.com
or visit escapesphoto.com for more info





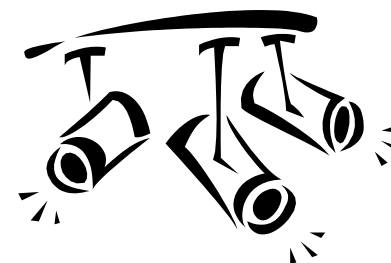
**LOGAN G.,
OUR LITTLE STARLET;
WE ARE SO PROUD!
BREAK A LEG!
LOVE, LAUREN, MOM & DAD**

Break a leg, Gaby! Oh,
wait... But really, you are
amazing and crazy talented.
We are both so fortunate to
know you as our best friend!
WE LOVE YOU
RHONDA!

- Love, Mary Kate and Meg



**Shout out to Alanna & Nick, our
favorite actress/artist & light tech/
push-me-pull-you! Love, your
beaming with pride family.**



We love you Trent!
Good luck tonight!
Love Mom, Dad,
Sabrina, Jannette,
Prescott, and Cora



The present
The town of Almost, Maine
There will be two acts and a 15 minute intermission

“Prologue”

Pete (11/2 & 3)	Ian Cessna
(11/9 & 10)	Brandon Tran
Ginette (11/2 & 3)	Lacy Nussbaum
(11/9 & 10)	Logan Guttschow

“Her Heart”

East	Trent Winsor
Glory	Cheylane Brown*

“Sad and Glad”

Jimmy	Dylan Donohue
Sandrine	Alanna Santiago*
the Waitress	Casey Lebre

“This Hurts”

Marvalyn	Mary Kate Moore*
Steve	Ian Cessna

“Getting it Back”

Lendall	Drew Burningham
Gayle	Makayla Foley*

Intermission

“They Fell”

Chad (11/2 & 3)	Dylan Donohue
(11/9 & 10)	Brandon Tran
Randy	Adam Randles

“Where it Went”

Phil	Jake Muzzarelli*
Marci	Kellie Nolan*

“Losing Hope”

the Woman	Meg Keogh*
the Man	Sam Langelier*
Suzette	Tori Moss

“Seeing the Thing”

Rhonda (11/2 & 3)	Natalie van Dongen*
(11/9 & 10)	Gaby Garris*
Dave	Drew Burningham

Production & Technical Team

Director	Kevin Yale Vernon
Technical Director	Sean Kerr
Assistant Director	Beth Topping
Stage Manager	Lauren Schmitt*
Student Director	Kristin Dougall
Assistant Stage Manager/Crew Chief	Taylor Garrett
Assistant Stage Manager	Katie Kolb
Light Design	Logan Christensen & Wes Ludwig*
Light Board Op	Asa Church
Sound Design	Emma Wilson
Sound Board Op	Bree Lehn & Rayven Brady
Set Design	Kevin Yale Vernon & Sean Kerr
Set Construction	Sean Kerr, John Cargill, & NCHS Drama Club
Makeup/Hair Design	Anna Joaquin*
Costume Design	Aly Spray
Props Masters	Tori Moss & Natalie van Dongen
Program cover design	Alanna Santiago
<u>Props/Stage Crew</u>	
Sawyer Burgess	Kylie Christensen
Saaud Zuberi	Kyle Aschbrenner
Katelynn Shennett*	Kate Hollingstead
Alexys Ogorek	Izzy Quistgaard
Jeff Smudde	Kelly Sopek
<u>Light Crew</u>	
Eric Herrling	Logan Christensen
Dulcie Church	Nick Santiago
<u>Sound Crew</u>	
Rayven Brady	Bree Lehn
Brandi Zimmerman	Alex Jordine
	Victoria Smith

*denotes Member of Thespian Troupe 613