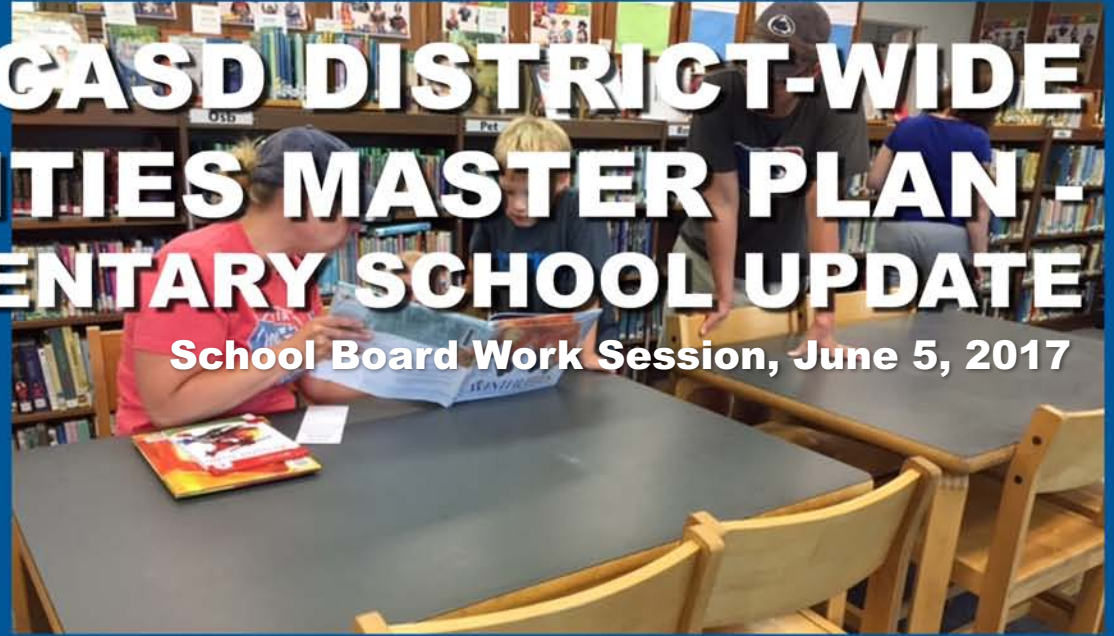


# SCASD DISTRICT-WIDE FACILITIES MASTER PLAN - ELEMENTARY SCHOOL UPDATE

School Board Work Session, June 5, 2017



## ARCHITECTS



**Crabtree, Rohrbaugh & Associates  
Architects**  
401 East Winding Hill Road  
Mechanicsburg, Pennsylvania 17055  
phone: (717) 458-0272 - fax: (717) 458-0047

## MEP ENGINEERS



**MOORE  
ENGINEERING  
COMPANY**

## CM SERVICES



**Massaro**  
CM SERVICES, LLC

## CIVIL ENGINEERS



**group, inc.**  
ENGINEERS - LANDSCAPE ARCHITECTS

**1.0 PROGRAM UPDATE 60% SUBMISSION**

**2.0 RADIO PARK ELEMENTARY SCHOOL**

**3.0 HOUSERVILL ELEMENTARY SCHOOL**

**4.0 CORL STREET ELEMENTARY SCHOOL**

**3 ELEMENTARY SCHOOLS WILL REVIEW**

**SITE PLAN**

**FLOOR PLANS**

**PROGRAM SQUARE FOOTAGE STATUS**

**PHASING**

**EXTERIOR RENDERINGS**

**5.0 SUSTAINABILITY**

Modifications between 30% & 60% submissions are being monitored graphically & tracking document with a goal of maintaining equity between schools.

Changes have been minimal since 30%, predominantly related to mechanical, electrical, plumbing, technology integration, efficiency opportunities and staff interior design discussions.



State College Area School District  
**PROPOSED EDUCATIONAL SPECIFICATION - 60% SUBMISSION**  
 Crabtree, Rohrbaugh & Associates

Total Gross SF:	61,834 SF
Total Net SF:	55,366 SF
Total Scheduled Area Net SF:	40,206 SF
Total Architectural Area Net SF:	15,160 SF
Net to Gross SF (Gross/Scheduled Area)	1.64 SF
PDE Std. Net to Gross SF (Gross/Scheduled Area)	1.58 SF

**HOUSERVILLE PROPOSAL**

**STANDARD EDUCATIONAL SPACES**

Kindergarten Classrooms Total	18,459 SF
1 Kindergarten Classroom B	3,155 SF
Toilet Room B110	144 SF
2 Kindergarten Classroom	12,323 SF
Toilet Room B108	2,624 SF
3 Kindergarten Classroom	213 SF
Toilet Room B117	213 SF

**Standard Classrooms Total**

1 1st Grade Classroom	1,480 SF
2 1st Grade Classroom	1,480 SF
3 1st Grade Classroom	1,480 SF
4 2nd Grade Classroom	1,707 SF
5 2nd Grade Classroom	1,707 SF
6 2nd Grade Classroom	1,707 SF
7 3rd Grade Classroom	2,049 SF
8 3rd Grade Classroom	2,049 SF
9 3rd Grade Classroom	2,049 SF
10 4th Grade Classroom	2,346 SF
11 4th Grade Classroom	2,346 SF
12 4th Grade Classroom	2,346 SF
13 5th Grade Classroom	2,515 SF
14 5th Grade Classroom	2,515 SF
15 5th Grade Classroom	2,515 SF

State College Area School District  
 Project No. 2993; 2994; 2995  
**PROPOSED EDUCATIONAL SPECIFICATION - 60% SUBMISSION**  
 Crabtree, Rohrbaugh & Associates  
 Project No. 2993; 2994; 2995  
 June 1, 2017

SUMMARY	QTY (BID 2010) MT. NITTANY		QTY (BID 2010) FERUGSON		QTY RADIO PARK (3-DEEP)		QTY RADIO PARK (4-DEEP)		QTY HOUSERVILLE (3-DEEP)		QTY CORL STREET (3-DEEP)	
Total Gross SF:	61,834 SF		64,500 SF		80,167 SF		89,032 SF		71,342 SF		84,101 SF	
Total Net SF:	55,366 SF		59,294 SF		69,557 SF		76,767 SF		65,033 SF		75,527 SF	
Total Scheduled Area Net SF:	40,206 SF		40,413 SF		46,255 SF		53,164 SF		45,737 SF		39,602 SF	
Total Architectural Area Net SF:	15,160 SF		18,881 SF		21,302 SF		23,603 SF		19,206 SF		17,925 SF	
Net to Gross SF (Gross/Scheduled Area)	1.64 SF		1.60 SF		1.66 SF		1.67 SF		1.56 SF		1.62 SF	
PDE Standard Net to Gross SF (Gross/Scheduled Area)	1.58 SF		1.58 SF		1.58 SF		1.58 SF		1.58 SF		1.58 SF	
<b>SCHEDULED AREA</b>												
Kindergarten Classrooms	3	3,155 SF	3	2,874 SF	3	3,292 SF	4	4,389 SF	3	3,307 SF	3	3,206 SF
With Single ADA Toilet		144 SF		140 SF		141 SF		186 SF		134 SF		145 SF
Standard Classrooms	14	12,323 SF	15	13,299 SF	15	12,956 SF	17	12,956 SF	15	13,003 SF	15	13,023 SF
Special Education Classrooms	3	2,624 SF	2	1,775 SF	3	2,290 SF	2	1,722 SF	2	1,734 SF	2	1,732 SF
Special Education - Therapy Room	1	213 SF		N/A		N/A		N/A		N/A		N/A
Open Small Group Instructions	3	3,206 SF	2	1,757 SF		N/A		N/A		N/A		N/A
Large Group Instructions		- SF		774 SF	2	1,264 SF	2	2,366 SF		N/A		N/A
Small Group Instruction	5	2,465 SF	4	2,646 SF	7	4,412 SF	7	4,412 SF	8	3,237 SF	4	1,951 SF
Art Classroom		982 SF		990 SF		1,071 SF		1,071 SF		1,202 SF		1,192 SF
Kitchen		64 SF		37 SF		86 SF		86 SF		99 SF		94 SF
Art Storage		100 SF		42 SF		217 SF		217 SF		237 SF		112 SF
Music Classroom		902 SF		896 SF		957 SF		957 SF		1,018 SF		519 SF
Practice Room		104 SF		104 SF		154 SF		154 SF		154 SF		112 SF
Instrument Storage		- SF		- SF		403 SF		403 SF		403 SF		34 SF
Library		1,351 SF		1,351 SF		1,552 SF		1,552 SF		1,552 SF		1,192 SF
Workroom/ Storage		147 SF		233 SF		1,052 SF		1,052 SF		1,052 SF		519 SF
Multimedia Project Room		147 SF		233 SF		2,783 SF		2,783 SF		2,783 SF		1,108 SF
Kitchen		1,480 SF		1,707 SF		1,972 SF		2,783 SF		3,031 SF		2,130 SF
Servings		TBD		TBD		218 SF		218 SF		218 SF		126 SF
Seating Capacity		TBD		TBD		TBD		TBD		TBD		193 SF
Multipurpose Space		5,998 SF		7,255 SF		2,404 SF		2,404 SF		2,404 SF		2,296 SF
Cafeteria		871 SF		917 SF		TBD		TBD		TBD		TBD
Stage		- SF		- SF		TBD		TBD		TBD		TBD
Gymnasium		- SF		- SF		TBD		TBD		TBD		TBD
PE Teacher Office & Gym Storage		- SF		- SF		TBD		TBD		TBD		TBD
<b>ADMINISTRATION</b>												
Administration Suite		2,981 SF		4,468 SF		4,174 SF		2,960 SF		3,114 SF		4,695 SF
Number of Staff		2 Staff		3 Staff		301 SF		596 SF		615 SF		574 SF
Nurse Suite		1,686 SF		2,515 SF		2,346 SF		2,346 SF		2,346 SF		2,346 SF
Number of cots		3 Cots		3 Cots		2 Staff		2 Staff		2 Staff		2 Staff
Storage/ Workroom		702 SF		904 SF		1,150 SF		1,150 SF		1,150 SF		844 SF
Faculty Planning/ Dining	1	233 SF	1	425 SF		1,591 SF		1,591 SF		1,170 SF		844 SF
Support Spaces (Storage, Mechanical, Gang Toilets, etc)		360 SF		624 SF		853 SF		757 SF		803 SF		809 SF
<b>ARCHITECTURAL AREA</b>												
Support Spaces (Storage, Mechanical, Gang Toilets, etc)		4,363 SF		6,900 SF		7,772 SF		7,904 SF		5,300 SF		6,227 SF
Circulation		10,797 SF		11,981 SF		13,530 SF		15,899 SF		13,996 SF		11,698 SF



**Program Update 60% Submission**

1.1



# Comparison of gym, cafeteria, and APR spaces

State College Area School District

Project No. 2993; 2994; 2995

## PROPOSED EDUCATIONAL SPECIFICATION - SCHEMATIC DESIGN

Crabtree, Rohrbaugh & Associates

February 1, 2017

### SUMMARY

QTY	(BID 2010) MT. NITTANY	QTY	(BID 2010) FERGUSON	QTY	SCHEMATIC RADIO PARK (3-DEEP)	QTY	SCHEMATIC RADIO PARK (4-DEEP)	QTY	SCHEMATIC HOUSERVILLE (3-DEEP)	QTY	SCHEMATIC CORL STREET (3-DEEP)
-----	---------------------------	-----	------------------------	-----	-------------------------------------	-----	-------------------------------------	-----	--------------------------------------	-----	--------------------------------------

# 30 %

Multipurpose Space	1	6,248 SF	1	6,338 SF	0	-	0	-	0	-	1	5,087 SF
Stage		871 SF		917 SF		-		-		-		569 SF
Cafeteria	0	-	0	-	1	2,387 SF	1	2,387 SF	1	3,177 SF	0	-
Stage		-		-		651 SF		651 SF		670 SF		-
Gymnasium	0	-	0	-	1	5,027 SF	1	5,027 SF	1	4,644 SF	0	-
PE Teacher Office & Gym Storage		-		-		281 SF		281 SF		350 SF		-

# 60 %

Multipurpose Space	-	5,998 SF	-	7,255 SF		-		-		-		4,695 SF
Stage		871 SF		917 SF		-		-		-		574 SF
Cafeteria	-	-	-	-		2,960 SF		2,960 SF		3,114 SF		-
Stage		-		-		596 SF		596 SF		615 SF		-
Gymnasium	-	-	-	-		4,174 SF		4,174 SF		4,175 SF		-
PE Teacher Office & Gym Storage		-		-		301 SF		301 SF		228 SF		-

1.2



## Program Update 60% Submission

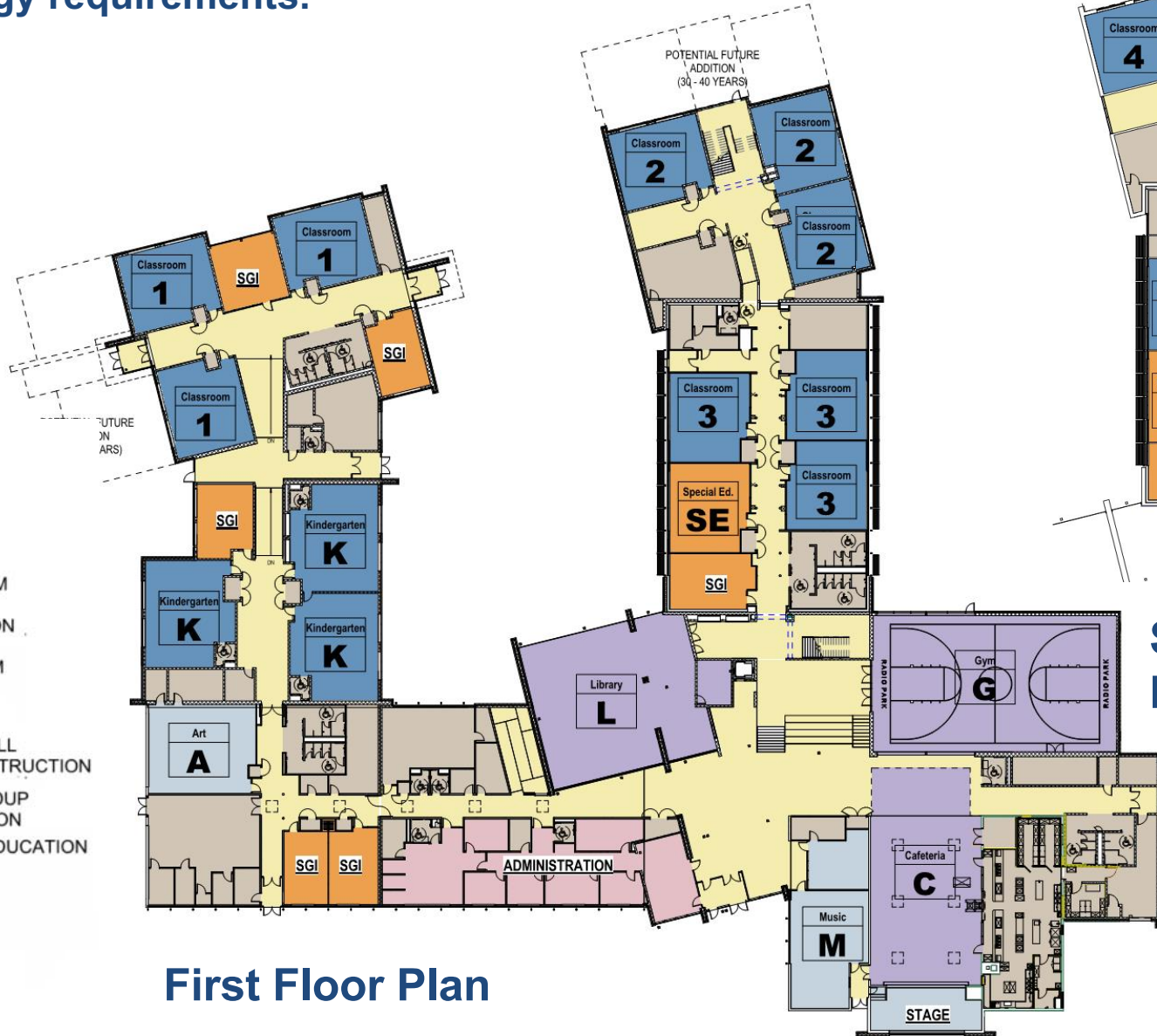




Staff and administrative reviews have been incorporated into the plans along with mechanical, plumbing, electrical and technology requirements.

### Legend

- ADMIN
- ART
- CLASSROOM
- CIRCULATION
- GYMNASIUM
- CAFETERIA
- OPEN SMALL GROUP INSTRUCTION
- SMALL GROUP INSTRUCTION
- SPECIAL EDUCATION
- STAGE
- SUPPORT
- LIBRARY
- MUSIC



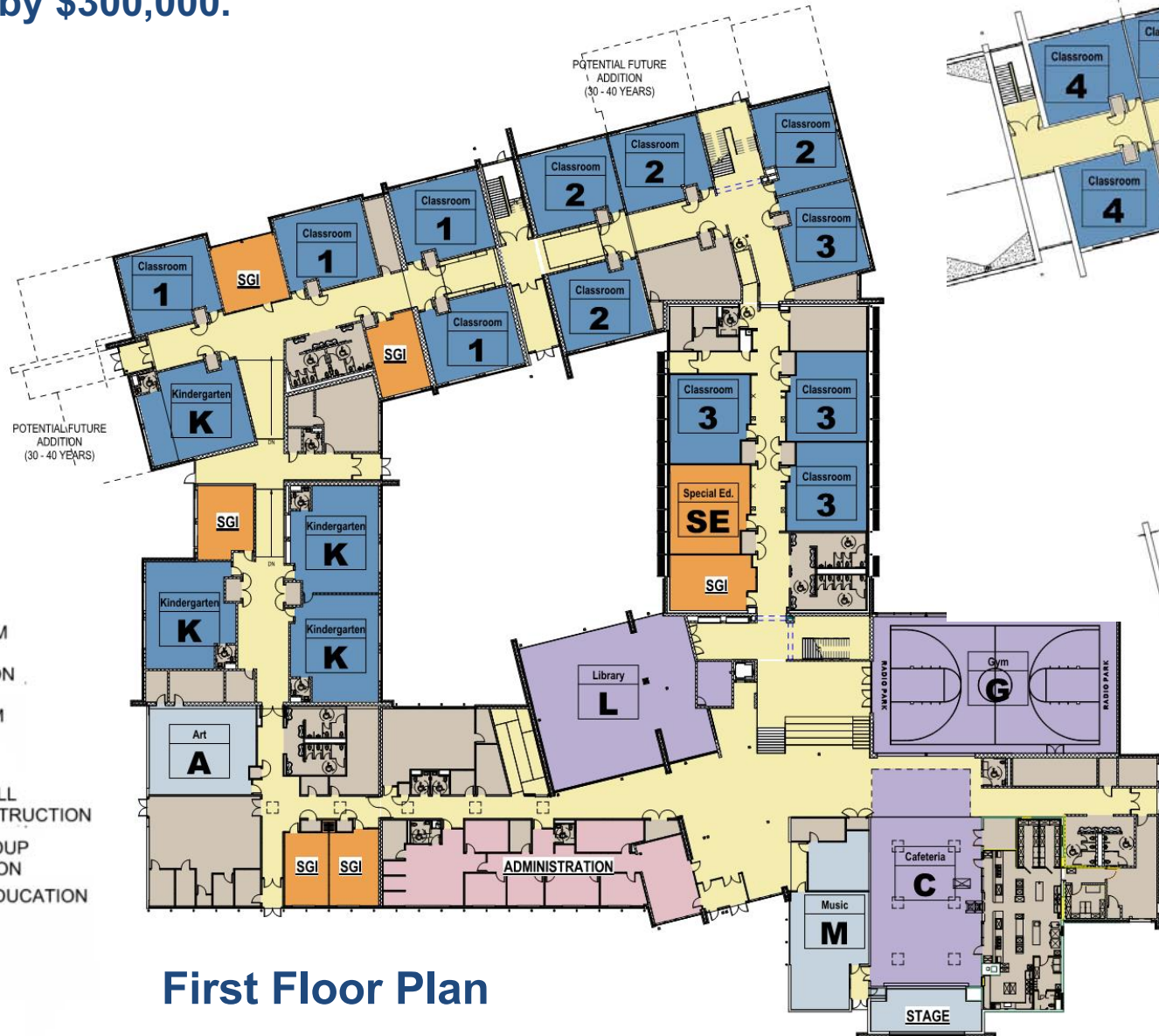
**First Floor Plan**

**Second Floor Plan**

The Alternate (6) classrooms for Radio Park is 8,865 square feet. As part of the Alternate, PA state reimbursement will increase by \$300,000.

**Legend**

- ADMIN
- ART
- CLASSROOM
- CIRCULATION
- GYMNASIUM
- CAFETERIA
- OPEN SMALL GROUP INSTRUCTION
- SMALL GROUP INSTRUCTION
- SPECIAL EDUCATION
- STAGE
- SUPPORT
- LIBRARY
- MUSIC



**First Floor Plan**



**Second Floor Plan**



**30% Submission**  
**Base Bid- 82,510 Square Feet**



**60% Submission**  
**Base Bid- 80,173 Square Feet**

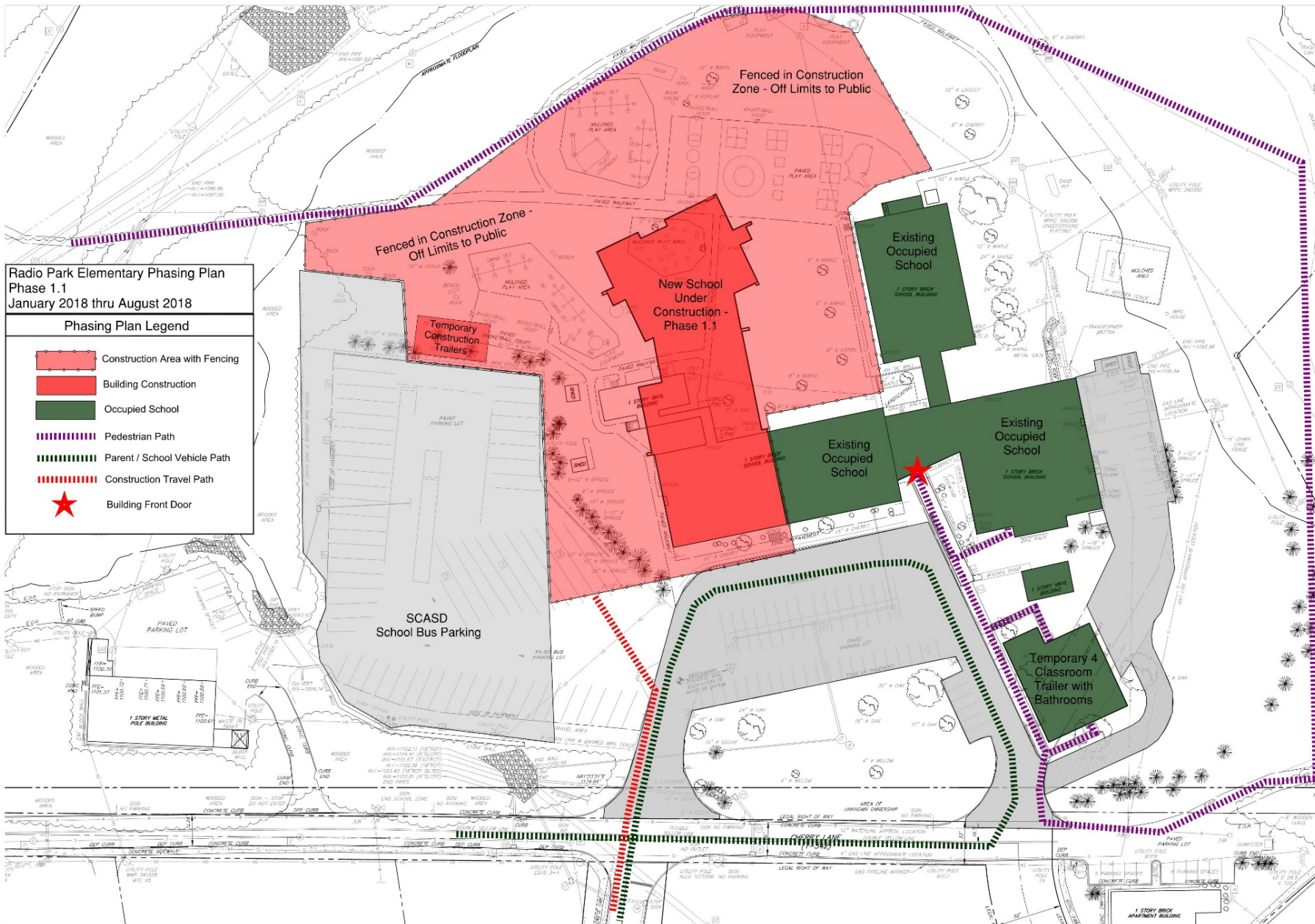
Progression from 30% to 60% over the past 4 months has seen a reduction in the square footage at Radio Park Elementary School in the Base Bid by 2,343 square feet, overall organization of educational groupings have been maintained with plan changes being subtle to accommodate efficiency and building systems. The reduced square footage continues to meet educational program requirements set forth for the project.

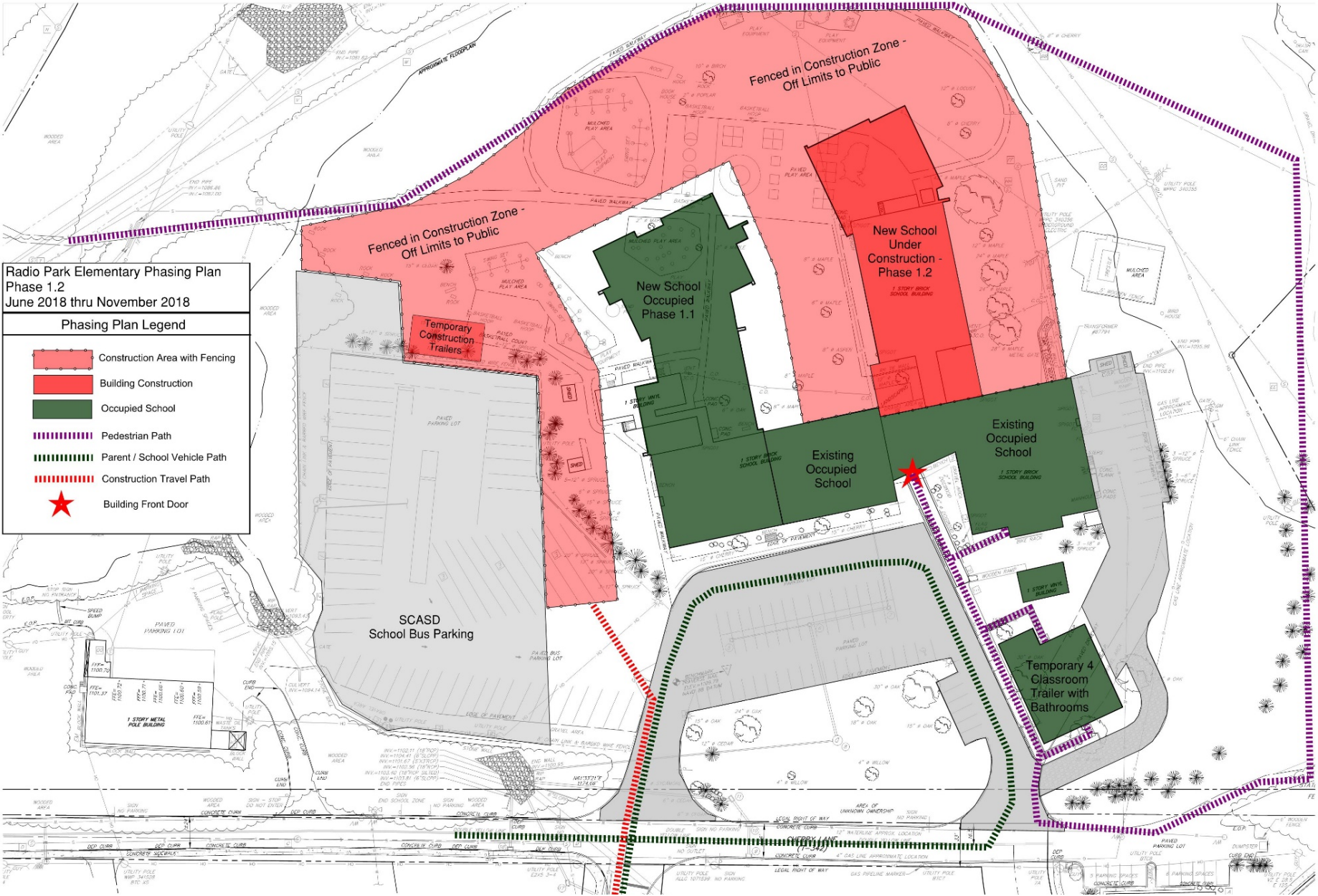
**CR Radio Park ES- Square Footage Status**



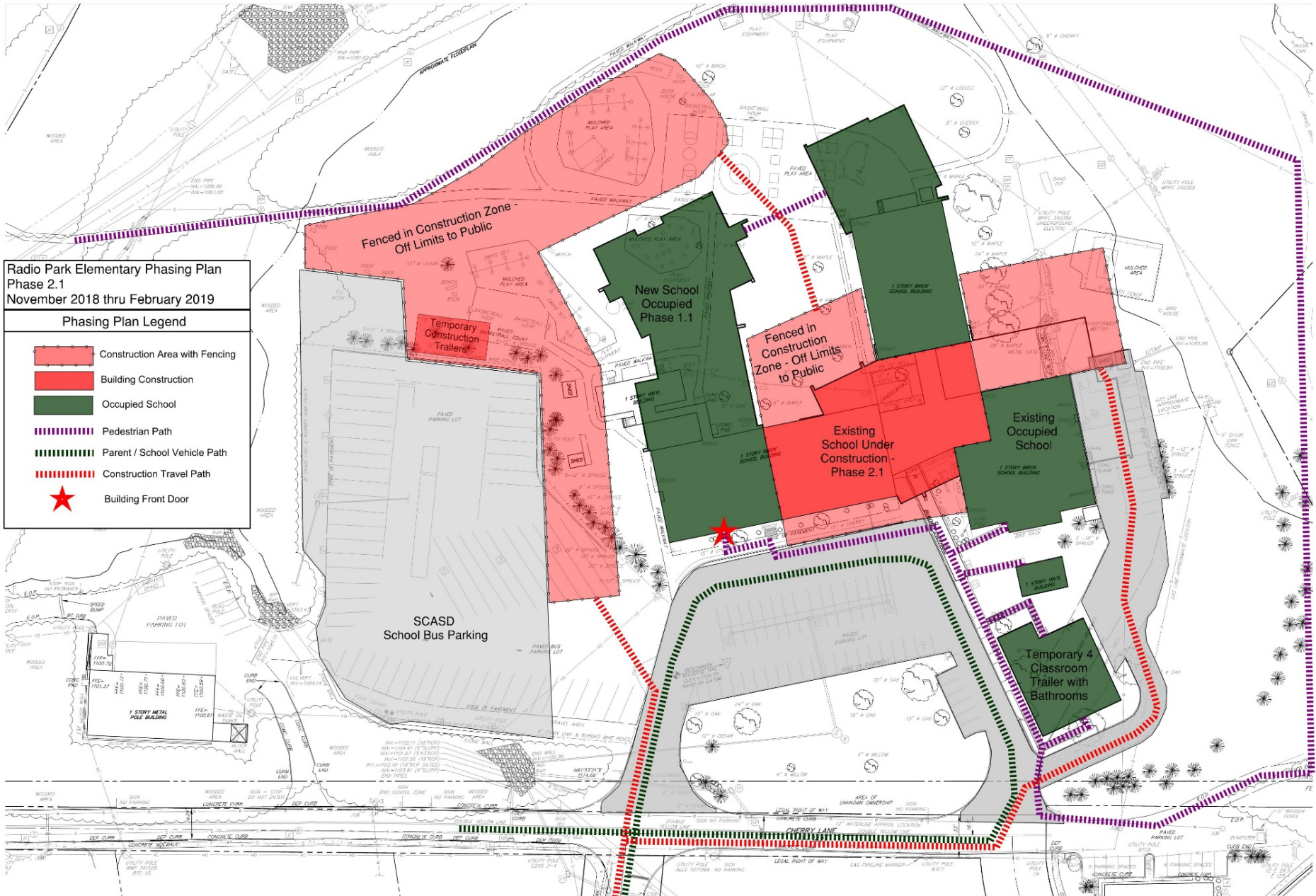








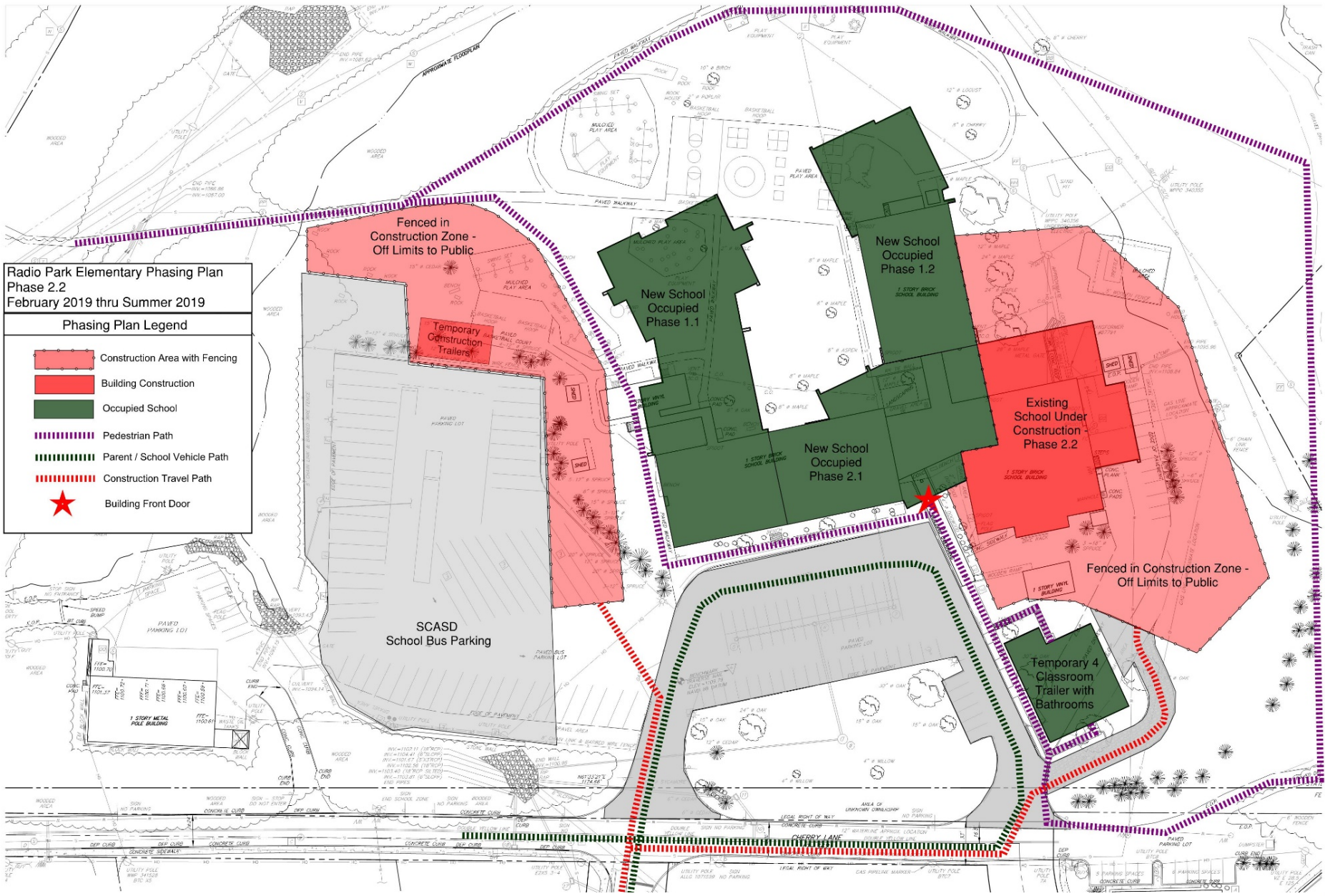
2.8



Radio Park Elementary Phasing Plan  
Phase 2.1  
November 2018 thru February 2019

Phasing Plan Legend	
	Construction Area with Fencing
	Building Construction
	Occupied School
	Pedestrian Path
	Parent / School Vehicle Path
	Construction Travel Path
	Building Front Door

2.9



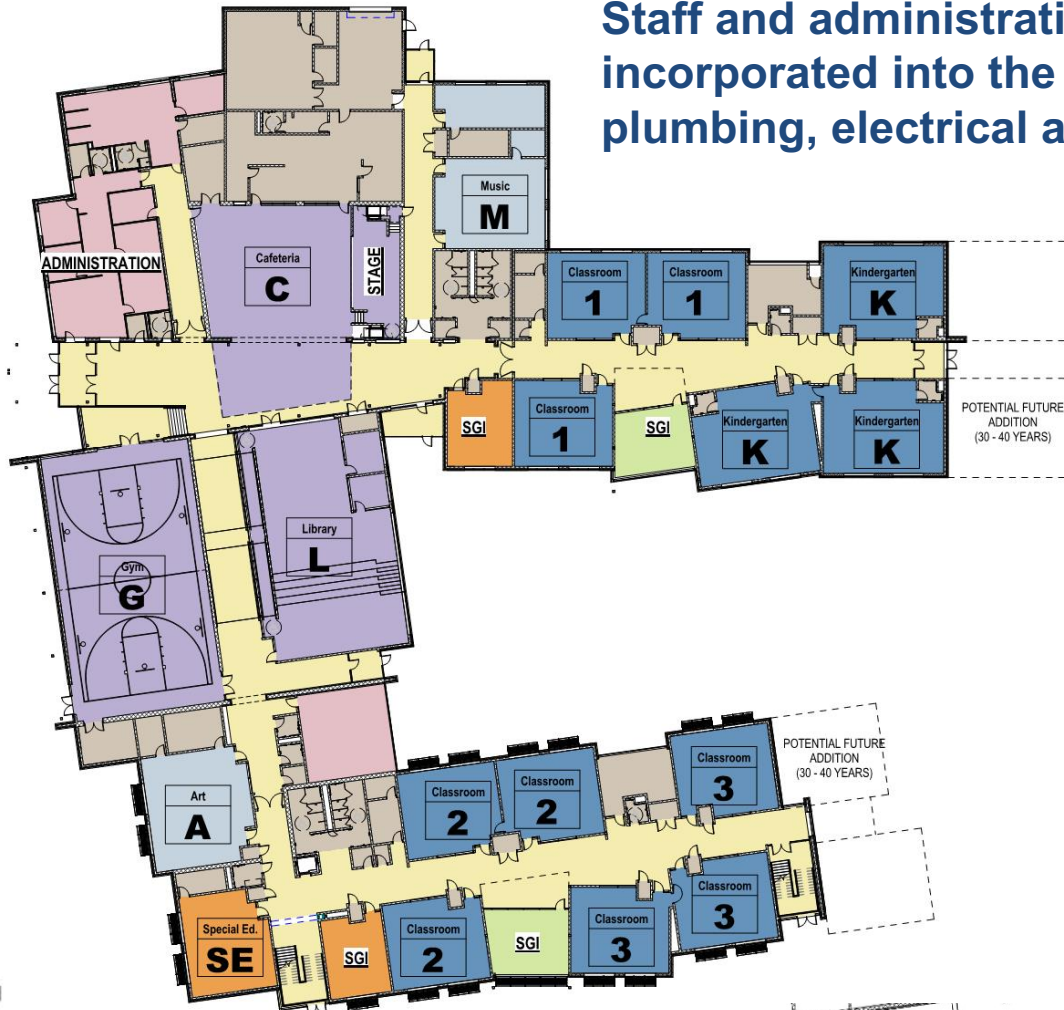
**Radio Park Elementary Phasing Plan Phase 2.2**  
 February 2019 thru Summer 2019

**Phasing Plan Legend**

- Construction Area with Fencing
- Building Construction
- Occupied School
- Pedestrian Path
- Parent / School Vehicle Path
- Construction Travel Path
- ★ Building Front Door

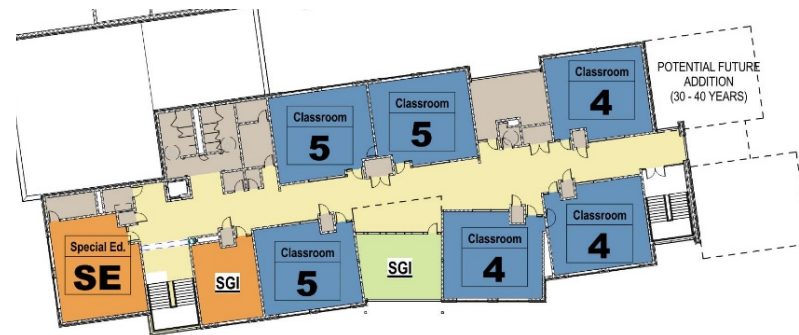


Staff and administrative reviews have been incorporated into the plans along with mechanical, plumbing, electrical and technology requirements.



**First Floor Plan**

**Second Floor Plan**



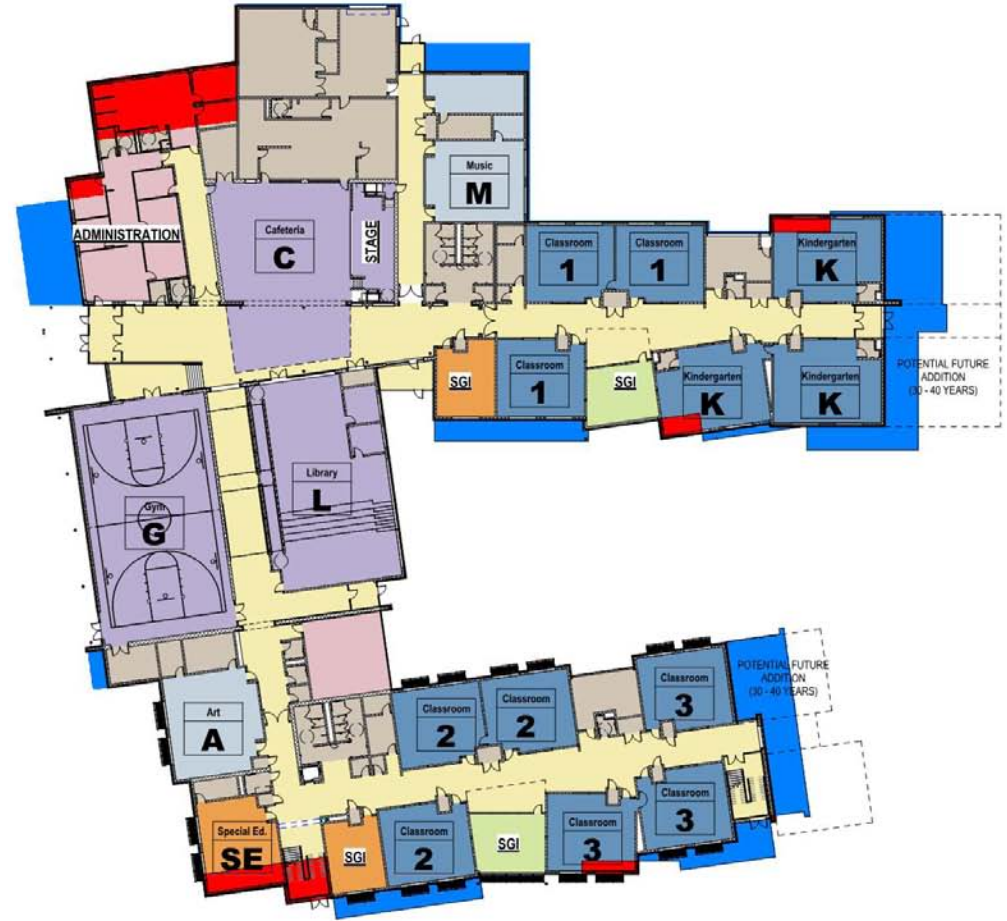
**Legend**

- ADMIN
- ART
- CLASSROOM
- CIRCULATION
- GYMNASIUM
- CAFETERIA
- OPEN SMALL GROUP INSTRUCTION
- SMALL GROUP INSTRUCTION
- SPECIAL EDUCATION
- STAGE
- SUPPORT
- LIBRARY
- MUSIC





**30% Submission  
76,072 Square Feet**



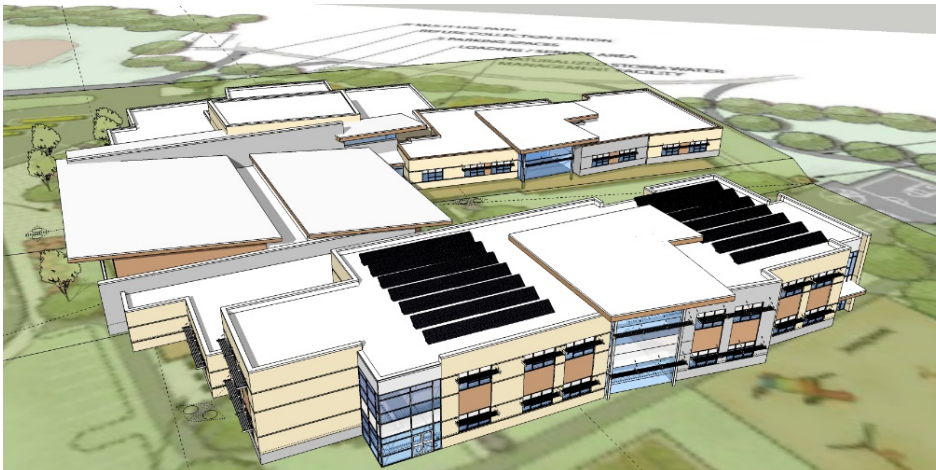
**60% Submission  
71,342 Square Feet**

Progression from 30% to 60% over the past 4 months has seen a reduction in the square footage at Houserville Elementary School by 4,730 square feet, overall organization of educational groupings have been maintained with plan changes being subtle to accommodate efficiency and building systems. The reduced square footage continues to meet educational program requirements set forth for the project.

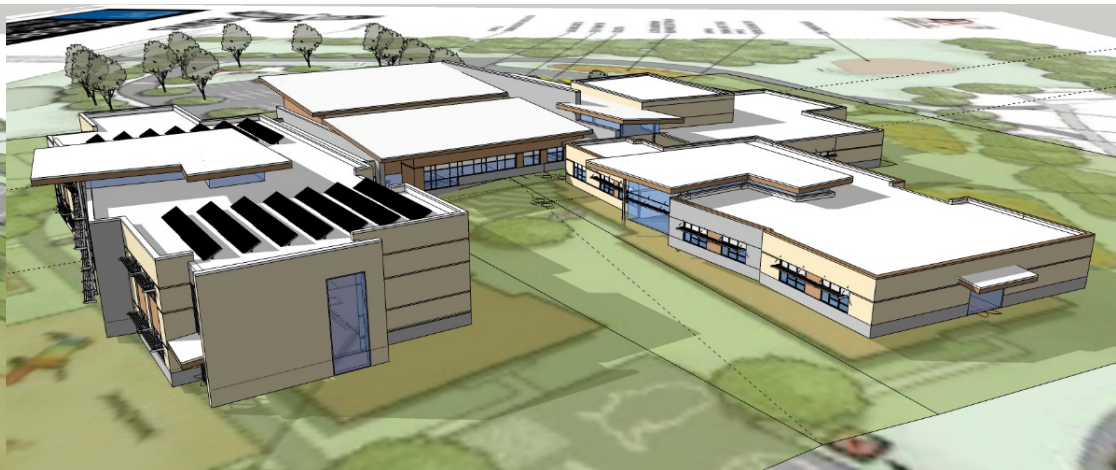
**CR Houserville ES- Square Footage Status**



**Main Entrance**



**Two Story Classroom Wing**



**Classroom Wings Facing  
Fogelman Field**

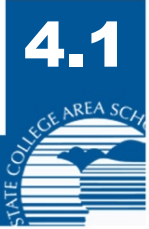


Houserville Elementary Phasing Plan  
January 2018 thru Summer 2019

Phasing Plan Legend	
	Construction Area with Fencing
	Building Construction
	Occupied School
	Pedestrian Path
	Parent / School Vehicle Path
	Construction Travel Path
	Building Front Door



# Corl ES- Site Plan



Staff and administrative reviews have been incorporated into the plans along with mechanical, plumbing, electrical and technology requirements.

**Legend**

- ADMIN
- ART
- CLASSROOM
- CIRCULATION
- GYMNASIUM
- CAFETERIA
- OPEN SMALL GROUP INSTRUCTION
- SMALL GROUP INSTRUCTION
- SPECIAL EDUCATION
- STAGE
- SUPPORT
- LIBRARY
- MUSIC



**First Floor Plan**

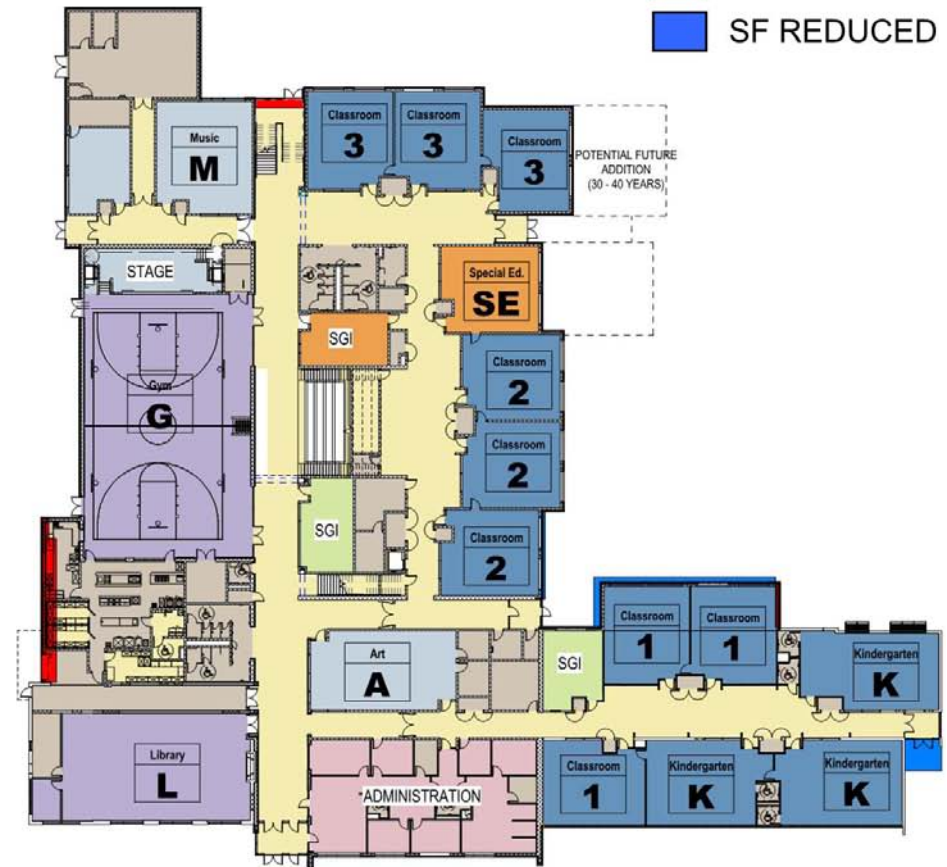


**Second Floor Plan**

■ SF ADDED  
■ SF REDUCED



**30% Submission**  
**63,710 Square Feet**



**60% Submission**  
**64,101 Square Feet**

Progression from 30% to 60% over the past 4 months has seen a small increase in the square footage at Corl Street Elementary School by 391 square feet, predominantly to accommodate kitchen functions, overall organization of educational groupings have been maintained with plan changes being subtle to accommodate efficiency and building systems. Educational program requirements for the project have been met.





**Playground Facade**



**Site Overview**

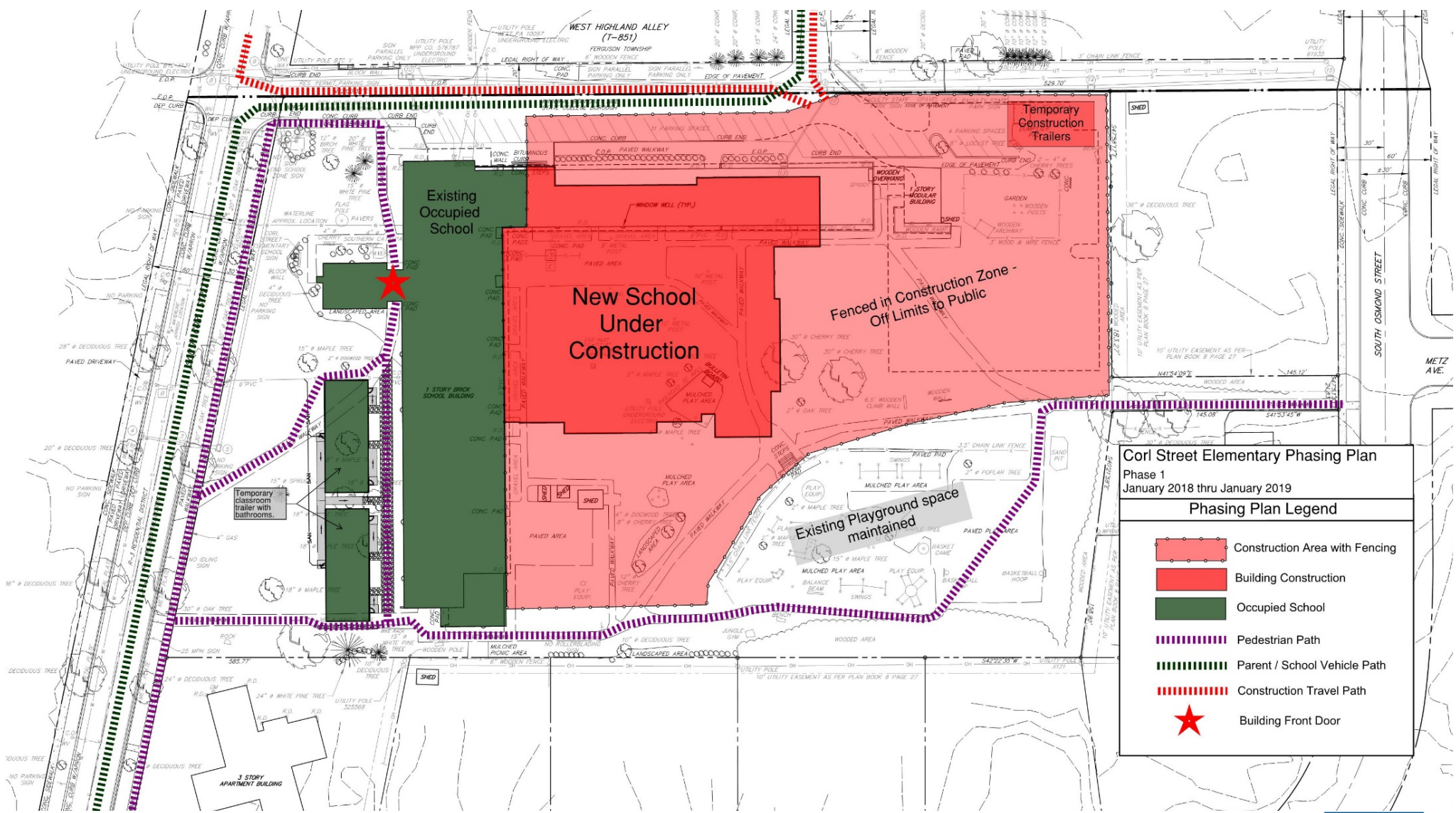


**Main Entrance**

**4.5**


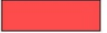







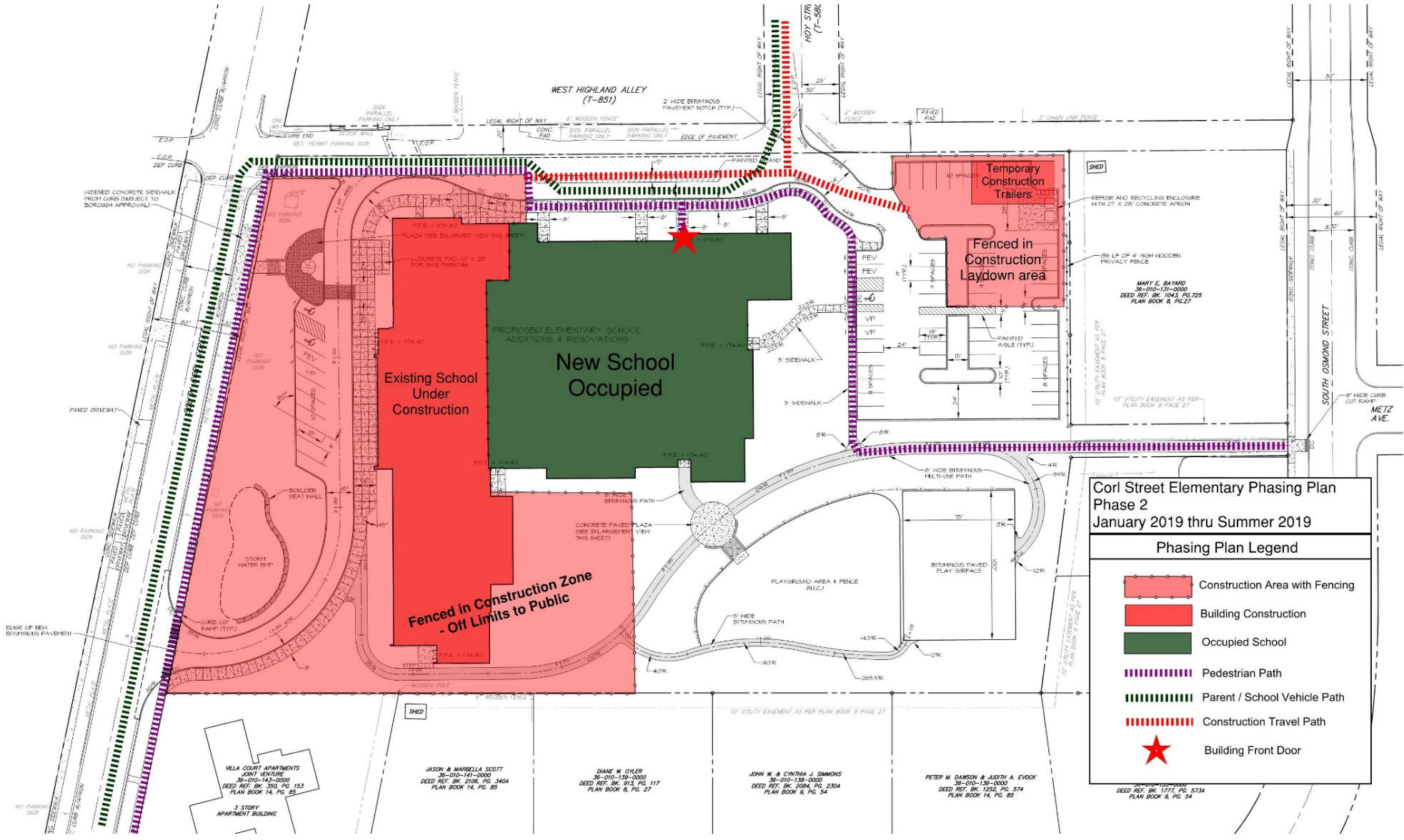




**Corl Street Elementary Phasing Plan**  
 Phase 1  
 January 2018 thru January 2019

**Phasing Plan Legend**

-  Construction Area with Fencing
-  Building Construction
-  Occupied School
-  Pedestrian Path
-  Parent / School Vehicle Path
-  Construction Travel Path
-  Building Front Door



**Corl Street Elementary Phasing Plan  
Phase 2  
January 2019 thru Summer 2019**

Phasing Plan Legend	
	Construction Area with Fencing
	Building Construction
	Occupied School
	Pedestrian Path
	Parent / School Vehicle Path
	Construction Travel Path
	Building Front Door

LINE AND SYMBOL LEGEND



**pennsylvania**

DEPARTMENT OF COMMUNITY  
& ECONOMIC DEVELOPMENT



## BEYOND SUSTAINABILITY

• Beyond typical Sustainable Design, there is the opportunity to integrate sustainability in the educational program, reinforcing sustainability and enriching education at each of the schools.

• Following Slides provide an overview of some of the sustainable features currently planned into all 3 schools.

- Sustainable Sites
- Water Efficiency
- Material Selection
- Energy Efficiency
- Indoor Environmental Quality

• All 3 elementary schools continue to be on track to meet LEED gold Certification with U.S. Green Building Council.

- This increases PA state reimbursement and will continue to maintain the grants by PA Department of Community and Economic Development.





# QUESTIONS?



## Thank You

