



5.B.1&2

Crabtree, Rohrbaugh & Associates

# STATE COLLEGE AREA SCHOOL DISTRICT

Mount Nittany ES & District-Wide  
Facility Master Plan Update

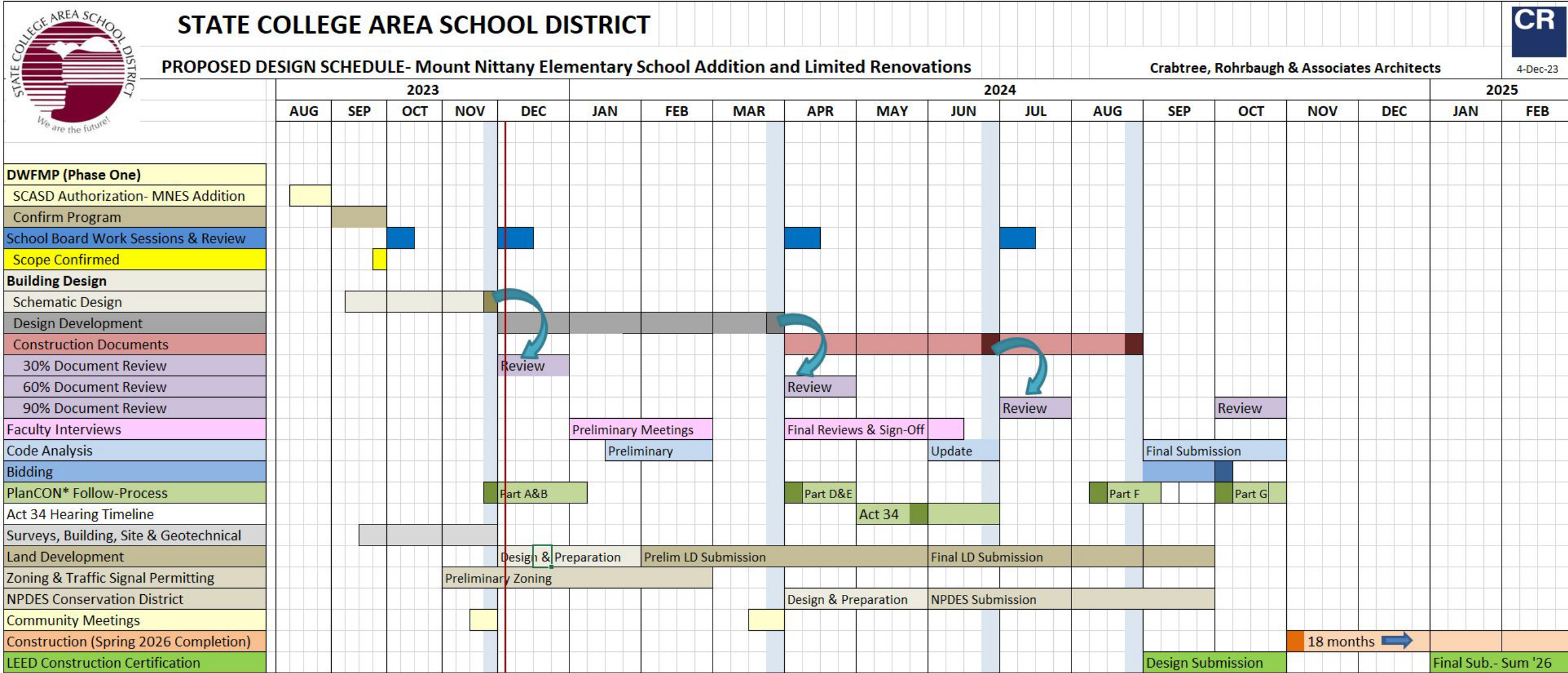
SCHOOL BOARD MEETING

October 2, 2023

# AGENDA

- **Mount Nittany Elementary School**
  - **Current Schedule**
  - **Current Steps**
    - **Existing Conditions, Survey & Geotechnical Investigation**
    - **Schematic Floor Plan Development**
  - **Upcoming Tasks**
  - **SCASD Engagement**
- **Cost Increase Discussion**
- **District-Wide Facility Master Plan**
  - **Current Schedule**
  - **Current Steps**
  - **Community & SCASD Faculty, Administration & Board of School Directors Engagement**

# CURRENT SCHEDULE



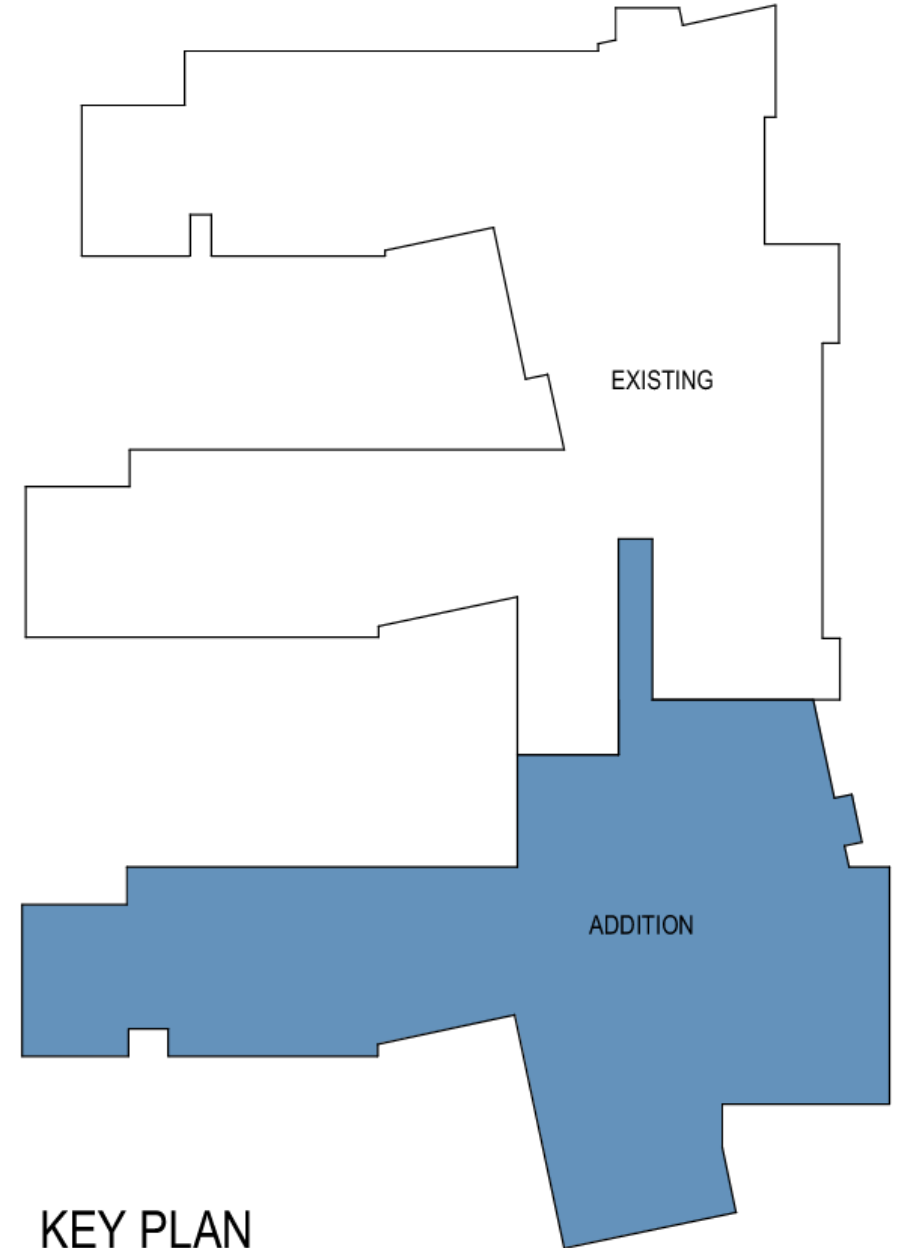
Current Schedule

# CURRENT STEPS

# FIRST STEPS (COMPLETE)

- Existing Conditions
  - Educational Program Confirmation
  - Inputting of As-Built Conditions- School Building
  - Site Survey- Scheduled for October
  - Geotechnical Subsurface Borings
    - Onsite Bores Completed Sept. 27/28 & Report In Process
- Educational Specifications for Addition
- Proposed Floor Plan

# MOUNT NITTANY ELEMENTARY SCHOOL



KEY PLAN



**PLANS PURPOSELY  
OMITTED FOR  
SECURITY  
PURPOSES, WILL BE  
DISCUSSED AT IN  
PERSON MEETING**



**PLANS PURPOSELY  
OMITTED FOR  
SECURITY  
PURPOSES, WILL BE  
DISCUSSED AT IN  
PERSON MEETING**

**PLANS PURPOSELY  
OMITTED FOR  
SECURITY  
PURPOSES, WILL BE  
DISCUSSED AT IN  
PERSON MEETING**

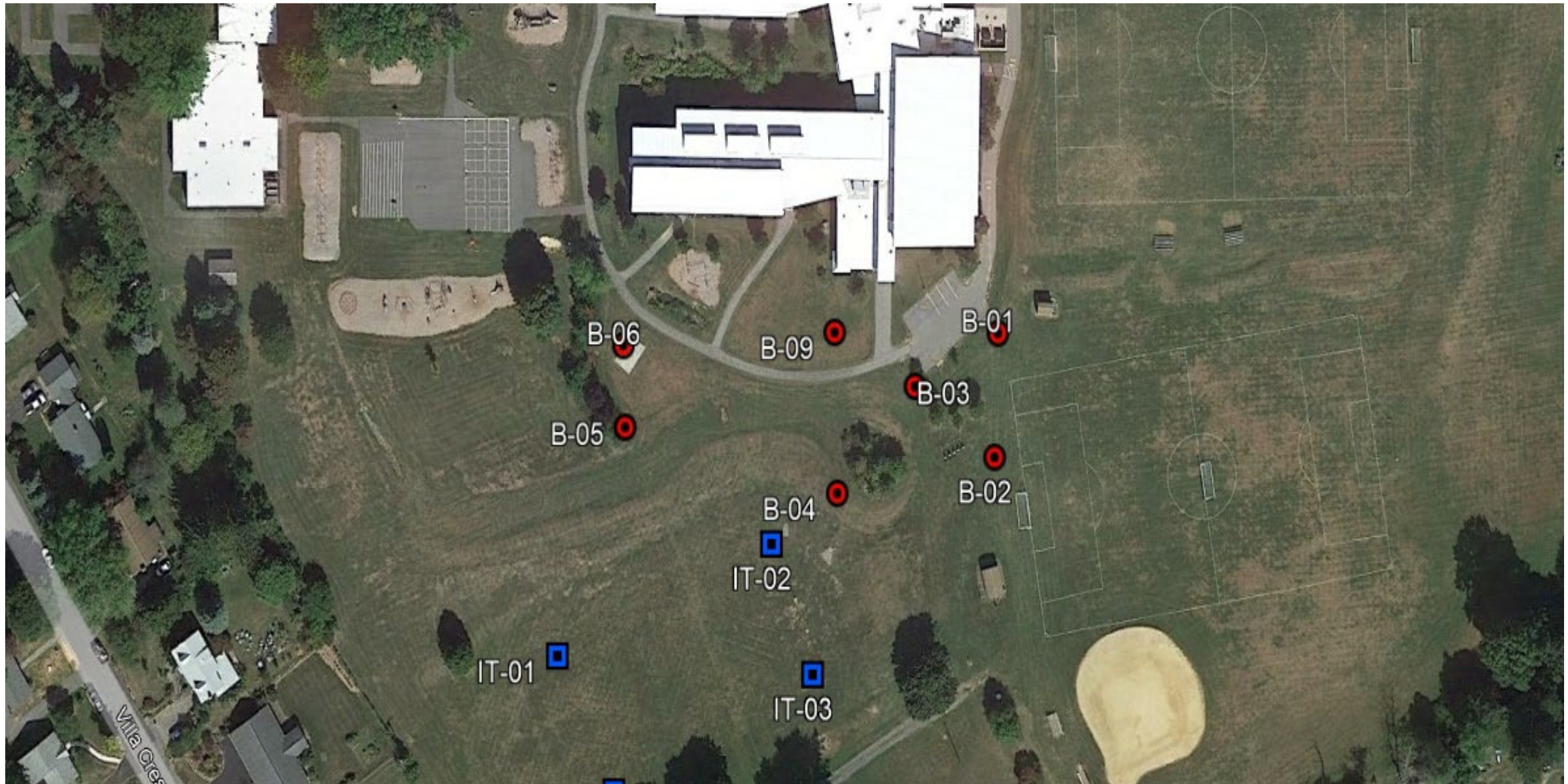
**Past 2 Months**

**STAKEHOLDER ENGAGEMENT**

- ADMINISTRATION
- STAFF
- PTO

**DESIGN EVOLUTION**

- REFINEMENT OF CAFETERIA, KITCHEN & RECEIVING
- STEM CLASSROOM
- AUTISTIC/ MULTIPLE DISABILITIES & SENSORY ROOM REFINEMENT & SUPPORT PROGRAM
- OPEN COLLABORATIVE INSTRUCTION & LOBBY DEVELOPMENT
- LOCKDOWN & SECURITY INTEGRATION
- TECHNOLOGY
- PDE DESIGNATIONS
- SITE DEVELOPMENT



**GEOTECHNICAL BORE LOCATION SCHEDULE SEPT. 27<sup>TH</sup> & 28<sup>TH</sup>**  
**COMPLETE, NO ANTICIPATED SUBSURFACE CONCERNS**  
**DISCUSS SINKHOLE BETWEEN EXISTING CLASSROOM WINGS**

**PLANS PURPOSELY  
OMITTED FOR  
SECURITY  
PURPOSES, WILL BE  
DISCUSSED AT IN  
PERSON MEETING**

# NEXT STEPS & SCASD ENGAGEMENT

## NEXT STEPS

- **Confirmation of Schematic Floor Plan (COMPLETE)**
- **Detailed Survey of Existing School to confirm tie in of new addition (COMPLETE)**
- **Budget Development**
- **Site Evaluation**
- **Beyond Survey & Geotechnical (COMPLETE)**
- **It is being evaluated if the addition and a potential new vehicle loop could improve circulation both for the increase in the school size, campus wide and playfields.**
- **Engineering team evaluation of mechanical, plumbing, electrical & structural systems for the addition**
- **Sustainability 12 years later- Integrating LEED v4/v4.1 into previously LEED v2 Certified project**

## SCASD ENGAGEMENT

- **With approval of schematic building design & budget by SCASD Board of School Directors & Administration, we will expand into building staff involvement as we develop interior design of the school for individual program spaces. (ON GOING)**

# PRELIMINARY SCHEDULE



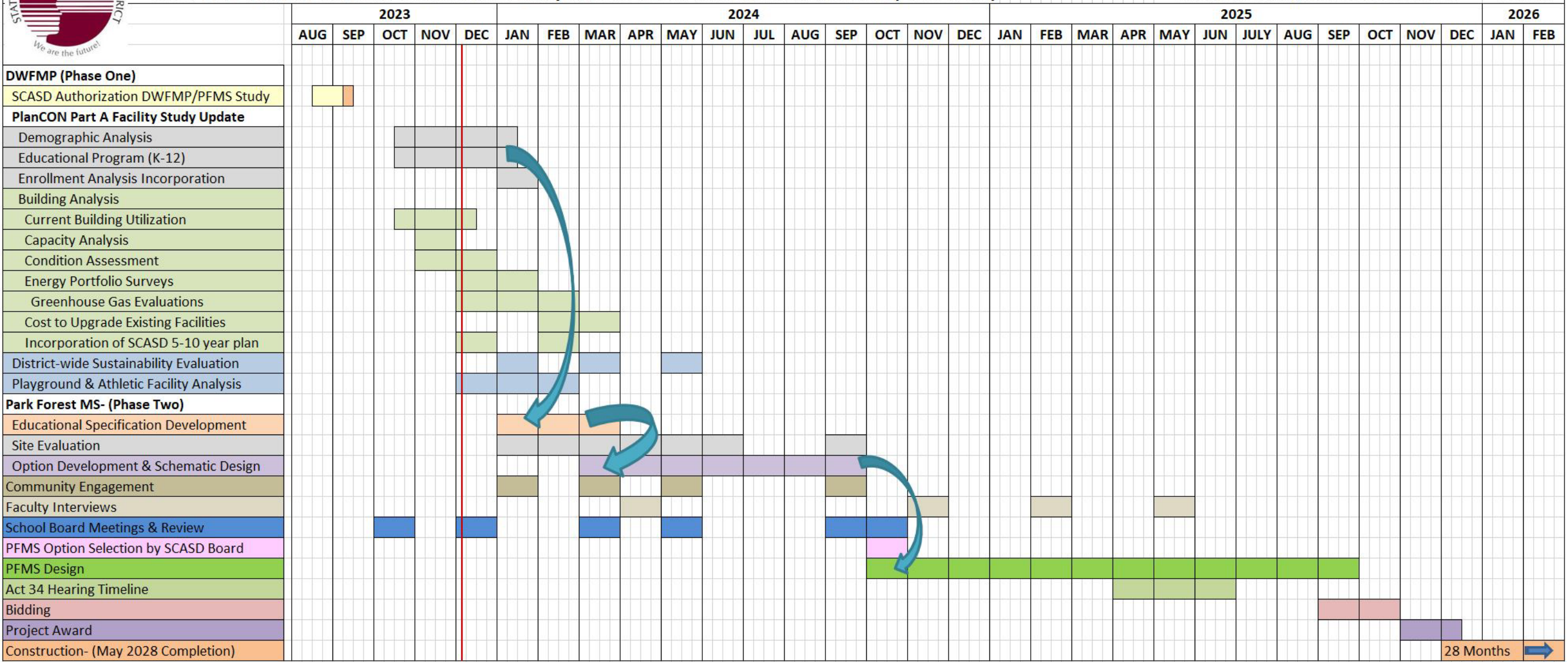
# STATE COLLEGE AREA SCHOOL DISTRICT



4-Dec-23

## PROPOSED DESIGN SCHEDULE- District Wide Facility Master Plan & Park Forest Middle School (Phase 1 & 2)

Crabtree, Rohrbaugh & Associates Architects



Current Schedule



# CURRENT STEPS COMMUNITY & SCASD ENGAGEMENT

# CURRENT STEPS

## DISTRICT WIDE FACILITY MASTER PLAN

- Site Surveys of existing facilities have begun over the last 2 months
  - This has included both architectural and MEP (mechanical, electrical and plumbing) teams.
- Team has begun investigating test fits for new construction and addition/renovation projects at all Park Forest property locations.
  - These will be reviewed with CAC for facilities in January
  - The Board will receive CAC findings on February 5<sup>th</sup>.
  - March 11<sup>th</sup> & 25<sup>th</sup> SCASD School Board input and response to information presented during February will be incorporated into the option development.
  - Site Survey (Tentatively Scheduled for December- Once site fully defoliates, has been delayed by defoliation this year.)
  - Evaluation of current educational program & development of future program (This is to be done before evaluation of design models) **ON GOING**
  - Evaluation of existing facility.
  - Steering Committee is also in development with SCASD at this time and is anticipated to be engaged beginning of 2024 for option development.



# QUESTIONS

