



State College Area School District

Randy Brown
Finance and Operations Officer

240 VILLA CREST DRIVE • STATE COLLEGE, PENNSYLVANIA • 16801
TELEPHONE: 814-231-1021 • FAX: 814-466-6068

To: Curtis Johnson
From: Randy Brown and Mike Fisher
Subject: Mount Nittany Elementary Project Update and Districtwide Facilities Master Plan
Date: November 2, 2023

The design, which includes district administration and staff as well as representatives from Crabtree Rohrbaugh and Associates (CRA), continues to work on the Mount Nittany Elementary (MNE) and Districtwide Facilities Master Plan (DWFMP) projects.

Mount Nittany Elementary Project

The primary focus of our work has surrounded identifying the floorplan needs for the addition to the school. This work included the principal, teachers, special education department and food service. During the month of November, faculty and staff will have a final look at the floorplan. The floorplan will be shared with the CAC for facilities and grounds in November at a special meeting being planned to provide an update and seek input. Board members are welcome to attend that meeting also. The floorplan will be made available at an upcoming MNE PTO meeting for input.

The floorplan will be presented at the December 4 board meeting, along with a explanation of the items included in the design and the prioritization criteria.

The stakeholder input for the MNE project will take a different path than the DWFMP due to the dissimilar scope of the project. Following review of the floorplan design, the 30% document review will be the next step for stakeholder input.

In addition to the floorplan design developed to date, future discussion items with the Board include:

- Consideration for a commission agent
- Updated design schedule
- 30-60-90 review expectations
- Traffic assessment and site survey results

The current design schedule is attached for reference. The progress of the MNE additions project can be tracked [on this website](#).

Districtwide Facilities Master Plan

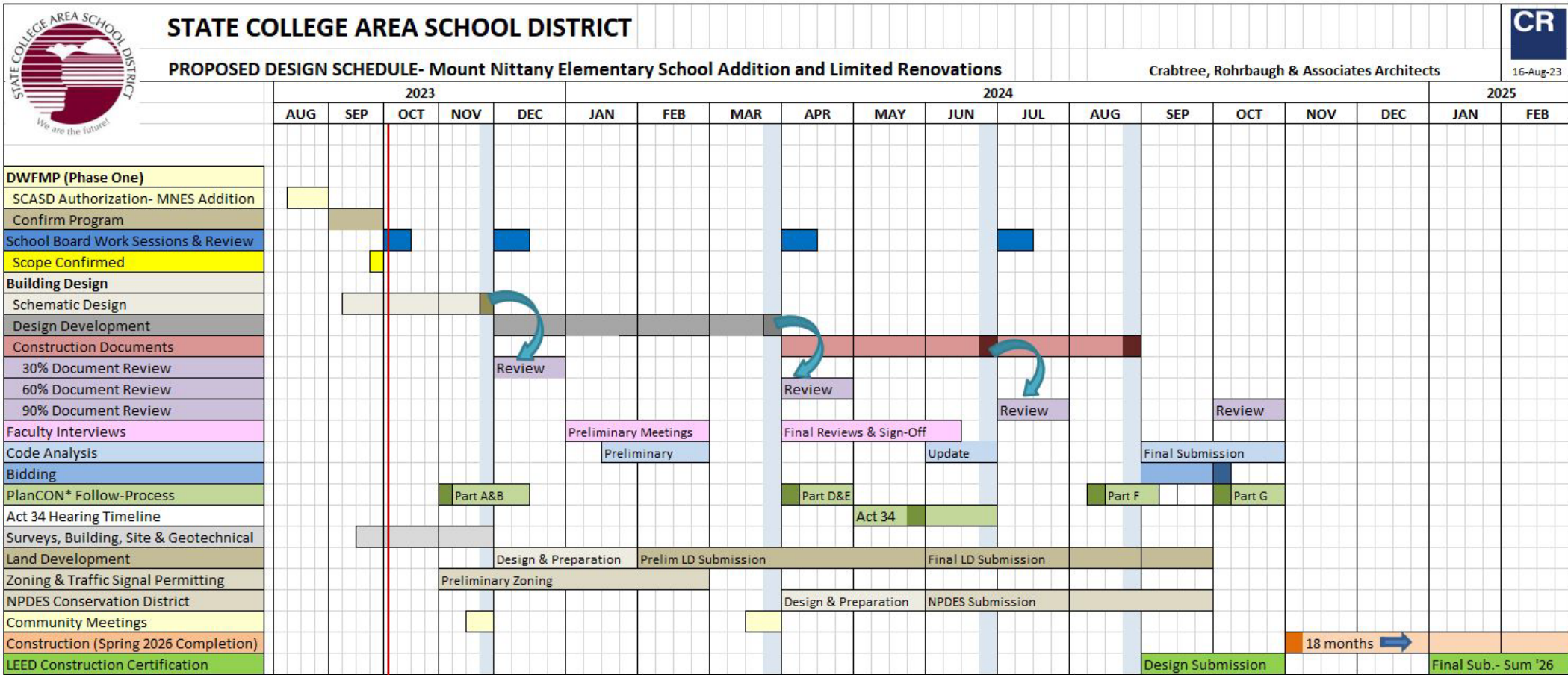
The DWFMP, although initially focused on PFMS, also has a focus on athletics and recreational facilities, sustainability, transportation, and deferred maintenance. Stakeholder input will be desired from a widepath of district employees and residents, as well as students.

Also at the December 4 meeting, CRA will provide an update to the work completed on this process including site assessments, an updated design schedule, and expectations for the 30-60-90 design process.

The district looks to create a steering committee of stakeholders representing various aspects of the community. The members and representations will include employees, parents, boosters/PTOS, and CAC membership from the district, community members representing business, academia, municipal government, CRPR, construction industry, private athletic groups, and third party users of district facilities.

An archive of the DWFMP documents, presentations and Board actions can be found on the [project website](#) as well. Further additions and explanations are currently being developed.

MOUNT NITTANY ELEMENTARY SCHOOL



Please be aware we anticipate the Schedule from 16aug23 will evolve in the coming months, but is a strong road map as we begin for planning.



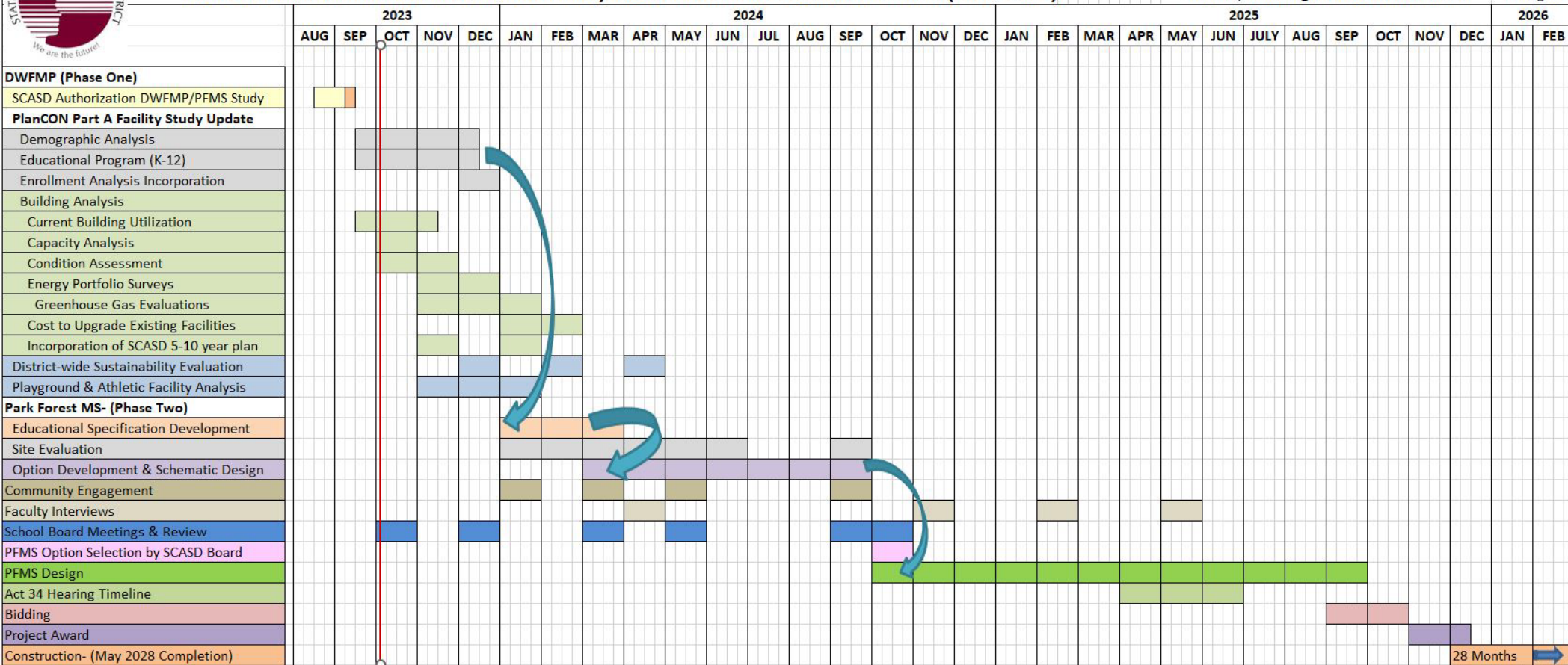
STATE COLLEGE AREA SCHOOL DISTRICT

PROPOSED DESIGN SCHEDULE- District Wide Facility Master Plan & Park Forest Middle School (Phase 1 & 2)

Crabtree, Rohrbaugh & Associates Architects



16-Aug-23



Please be aware we anticipate the Schedule from 16aug23 will evolve in the coming months, but is a strong road map as we begin for planning.