



Proposal for
**Playground Master Planning
and Design Services**

State College Area School District

Prepared by:



Offices in Lititz, State College & Butler, Pennsylvania
717.626.7271 • 814.861.6328 • 724.256.9646
elagroup.com

August 3, 2018

Table of Contents

- 1** Cover Letter
- 2** Fee Structure
- 3** Project Understanding
- 4** Tentative Project Timeline
- 5** Project Team
- 6** Project Experience



Playground Master Planning and Design Services

State College Area
School District

1 Cover Letter





August 3, 2018

Ed Poprik, PCSBO
Director of Physical Plant
State College Area School District
131 West Nittany Avenue
State College, PA 16801

Dear Mr. Poprik:

I am pleased to present you with ELA Group, Inc's. (ELA) proposal for the State College Area School District's **Playground Master Planning** initiative. ELA's interest in this project is several fold: including our desire to design great spaces and facilities for youth activities, the ability to showcase our services as the primary design consultant, and continued service for the school district and Centre Region community.

In addition to our interest with this project, ELA has many unique qualifications that I believe sets us apart from other consultants which include a few listed below:

- Strong background in Landscape Architecture – while we are typically known as a site/civil consultant, our firm professional make-up is approximately 50 percent landscape architects. The combined years of service across our ten registered landscape architects is over 250 and our team selected for your project is over 100 in the landscape architecture field.
- We are “implementation centric” meaning our conceptual designs that will be part of this Master Planning effort not only look good on paper but will be well thought out and able to be constructed with little changes necessary.
- Experience with the State College Area School District – although we have worked as a subconsultant on many projects with the school district, we have been a significant participant in many meetings, community outreach initiatives and collaboration with administration and Board of Directors.
- Designer of many public outdoor facilities and spaces in the Centre Region which have been well received – and used quite heavily.

Our team is committed to provide design excellence and service – it's in our DNA. Thank you for the opportunity to continue our service to the school district and its constituents.

Sincerely,
ELA GROUP, INC.

A handwritten signature in black ink that reads 'Matthew R. Harlow'.

Matthew R. Harlow, RLA
Principal in Charge - Central PA Office

Playground Master Planning and Design Services

State College Area
School District

2 Fee Structure

- Basic Services Fee
- Reimbursable Expenses
- Additional Meeting Fee
- Additional Services
- Hourly Rate Schedule



Our Fee Structure for this project is as follows:

Basic Services Fee

Our fee for Basic Services has been derived from the projected hours for the tasks assigned to our Design Team at their billing rates. Our fixed, not to exceed fee is: \$76,250.00 (Seventy-Six Thousand, Two Hundred and Fifty Dollars). This is not a Lump Sum fee structure and our team will endeavor to be efficient as possible to reduce our hours expended which in turn will reduce our overall fee to SCASD.

Reimbursable Expenses

We have typically estimated reimbursable fees in the range of 3% to 5% of the Basic Services Fee; however for this project, we anticipate using digital files in place of paper where feasible, and our travel mileage is minimal. Therefore, our reimbursable expenses, which are outlined on our Rate Schedule, are not expected to exceed \$500.00 (Five Hundred Dollars).

Additional Meeting Fee

Our fee for additional meetings beyond what is required in the Request for Proposals is: \$400.00 (Four Hundred Dollars) per meeting.

Additional Services

At this juncture, we do not foresee any Additional Services beyond what we have outlined in our Scope of Basic Services and as required in the Request for Proposals. If something should arise during the course of the project that was not anticipated, we will discuss with SCASD and receive authorization prior to executing any work.



Offices in Pennsylvania
Lititz 717.626.7271
State College 814.861.6328
Butler 724.256.9646
www.elagroup.com

HOURLY BILLING RATE SCHEDULE FOR 2018 CONSULTING SERVICES

STAFF TYPE	HOURLY BILLING RATE
ELA GROUP, INC. – ENGINEERS AND LANDSCAPE ARCHITECTS	
President and President Emeritus	\$155.00 - \$175.00
Principal-In-Charge	\$155.00 - \$170.00
Department Director/Principal	\$115.00 - \$160.00
Senior Project Manager/Engineer/Landscape Architect	\$105.00 - \$155.00
Project Manager	\$100.00 - \$115.00
Project Engineer	\$ 60.00 - \$150.00
Designer	\$ 80.00 - \$ 90.00
Transportation Technician	\$ 90.00 - \$ 95.00
CADD Manager	\$ 90.00 - \$100.00
Senior CADD Designer	\$ 85.00 - \$ 95.00
CADD Designer/Graphic Coordinator	\$ 85.00 - \$100.00
CADD Technician	\$ 55.00 - \$ 75.00
GIS	\$120.00
Administration	\$ 50.00 - \$ 80.00
ELA SPORT - ATHLETIC FACILITY PLANNING	
Principal-In-Charge: ELA Sport	\$155.00
Project Manager	\$100.00 - \$155.00
Senior Designer	\$100.00 - \$110.00
ELA TECHNOLOGIES - ELECTRONIC DATA MANAGEMENT	
Account Manager	\$ 90.00 - \$110.00
Tech Support	\$ 90.00 - \$110.00
Scanning (Document Imaging)	\$45.00

REIMBURSABLE EXPENSES

Reimbursable expenses are at cost including, but not limited to the following:

- | | |
|--|---|
| <ol style="list-style-type: none"> 1. Mileage 2. Travel Expenses, including Meals 3. Blueprints 4. Mylar Copies 5. Xerox Copies 6. Postage 7. Film Processing/Photographs 8. Laboratory Work | <ol style="list-style-type: none"> 9. Testing Services 10. Outside Consultants 11. Equipment Rental 12. Traffic Counter Rental 13. Application Fees 14. Recording/Notary Fees 15. Permit or Other Fees 16. Other Project Related Expenses |
|--|---|

ELA Group, Inc./ELA Sport adjusts the fee schedule annually to reflect the cost of doing business for the coming year. This fee schedule is effective December 23, 2017 through December 21, 2018. For projects in progress that extend past the dates of the fee schedule attached to executed contracts, rates will be adjusted on the invoices and may adjust the amount of the project contracted fee.



Offices in Pennsylvania
Lititz 717.626.7271
State College 814.861.6328
Butler 724.256.9646
www.elagroup.com

Playground Master Planning and Design Services

State College Area
School District

3 Project Understanding

Overview

Scope of Basic Services Outline



PROJECT UNDERSTANDING

The school district is embarking on the development of a Master Planning initiative for the playgrounds at all eight (8) of the elementary schools and the two (2) middle schools. The Master Plan will be utilized as a tool to guide future decisions for capital improvements by the school district and other stakeholder groups for the enhancement of playgrounds and outdoor spaces to be an integral part of the educational, social and wellness experiences for students at each school.

The school district desires a comprehensive playground plan that incorporates “naturalized” playground amenities and spaces that provide and promote learning opportunities while potentially incorporating new and existing playground structures and equipment.

“Naturalized” playgrounds are generally defined by incorporating natural elements with “traditional” manufactured play amenities. Natural elements can consist of trees, plants, rocks, topographical changes, and yes – soil and water. Over the past decade or so, the trend towards “naturalized” playground design has grown and several studies have indicated a child’s engagement and activity is higher in these playground settings. ELA recognizes the importance and promotes the inclusion of naturalized elements for recreational and educational opportunities in all our projects where applicable. For instance, at the high school, rather than removing a construction required sediment trap, it will be retained and converted with minimal effort and cost to a storm water “rain garden” which will be available for curriculum use. Similarly, at the current Radio Park and Corl Street projects small “rain garden” areas with natural boulder seat walls will be constructed as part of the stormwater management design for student interface and engagement.

One of the primary reasons for the increased engagement and activity with a “naturalized” playground is the variety of options and spaces provided, as not all children are enamored with active play on a structure or a sport court. As children grow, their interests continually change so having a multitude of play and socialization space options and opportunities is desirable. Landscape/plant materials incorporated in the play area play a large role as well. These materials offer textures, colors, shapes and havens for critters that continually change. Every day and every season can provide a different experience within the same play area space. The play equipment manufacturers have responded to the trend as well by building and supplying more equipment options that mimic natural elements while providing enhanced opportunities to develop fine and gross motor skills of children.

As part of the planning process, we also need to have a conversation about potential unintended consequences of “naturalized” playgrounds such as additional maintenance (weeding and plant damage/ replenishment), risk management, challenges for full ADA accessibility and seasonal use availability and weigh these as part of the program development effort.

Every school site has unique characteristics, opportunities, constraints and identities that need to be understood and incorporated in the planning and design process. Playground and outdoor educational space design alternatives are infinite and they are generally only limited by imagination and budget. Our scope of services includes a significant effort to observe, inventory and analyze each site. Design solutions are built in layers starting with “what the site is telling us” then building on with a collaborative and communitive effort with all the project stakeholders to identify and develop program elements, and then begin painting the canvas with all the information on our palette.



Offices in Pennsylvania
Lititz 717.626.7271
State College 814.861.6328
Butler 724.256.9646
www.elagroup.com



The Scope of Basic Services below is an outline of our project approach and “layers” to be provided.

Scope of Basic Services Outline

A. Data Collection and Basemap Preparation

1. Coordinate with SCASD to obtain available site plans and relevant information for each school site in a preferred AutoCAD digital format, or PDF format at a minimum (with exception of Radio Park, Spring Creek and Corl Street). AutoCAD format files should be available for all the elementary schools and potentially Mount Nittany Middle School.
2. It is likely there will not be any current site plan data for Park Forest Middle School; therefore, we have included time to create a basemap from publicly available aerial photographs, GIS data and rough field measurements as necessary.
3. Convert and format all the data into current drafting standards and prepare a site basemap for all project sites at a consistent scale and sheet size. The basemaps will be the foundation and backgrounds for all design and planning efforts.
4. Include approximate locations and shape/size of any current site improvements or structures that may be identified during site reconnaissance.

B. Site Reconnaissance, Inventory and Analysis

1. Perform site visits at each school. We envision this as a two-step process:
 - The first step being a walkover with SCASD staff to generally identify the “specific project area” of focus; review and identify existing play structures, equipment and amenities to be retained or removed; perform a cursory review of the structures identified to remain to assure they will, or can with minimal maintenance, meet current playground safety standards.
 - The second step will be a follow up visit to each site to spend more time reviewing and understanding the site conditions and influences, such as:
 - Natural, cultural and manmade features/structures
 - Pedestrian access from the buildings for general and ADA accessibility
 - Adjacent land uses, neighborhood settings
 - Safety/security measures and student monitoring availability
 - Climatic influences, views/viewsheds, and solar orientation
 - Topography (include slope analysis and drainage patterns)
 - Karst features – depressions and sinkholes
 - Vegetation and wildlife habitat
 - Environmentally sensitive areas
 - Utilities, overhead and subsurface

(It is anticipated that our staff will complete 3 to 4 follow up site visits per day for an estimated 3 days to complete all sites. All site visits will be appropriately coordinated with SCASD staff.)

2. Record site findings on the project basemap in an easy to understand, graphical format for stakeholder use and reference during program development and planning activities.
3. Develop a written narrative on the constraints and opportunities discovered as part of the site analysis process that may impact the planning and design initiatives.

C. Program Development

1. Through the various meetings with the project stakeholders, identify and prioritize the program elements (capital improvements such as play equipment and structures, play surfaces and hardscape elements and landscape features and non-capital improvements such as garden areas and open lawn play areas) required and desired for each of the sites. Identify the capital or other improvements to be implemented by SCASD and improvements to be implemented by other stakeholders such as PTO's or other school groups/organizations.
2. Establish a general budget for initial and long-term capital improvements investment by SCASD.
3. Establish a general schedule for capital improvements by SCASD. Obviously, the three elementary schools under construction take priority for the initial capital investment to assure the implementation schedule aligns with the school construction schedules.

D. Stakeholder Engagement

ELA will facilitate and prepare all presentation materials including agendas, multimedia presentation formats as required to convey the information appropriately (PowerPoint, Plans/Drawings, handouts) and record/document the pertinent meeting correspondence for the following meetings:

- SCASD Administrative and Professional Staff (2)
- SCASD Playground Task Force (2)
- SCASD School Board of Directors (2)
- At-large Community Forum (2)

General Description of Meeting Objectives (subject to change, reorder or refinement)

Administrative and Professional Staff (APS) Meeting 1

- Project "Kick-Off" meeting to discuss planning process and schedule; delegation of assignments/responsibilities of the design team and APS members; develop list of key stakeholders and contacts; discussion on public outreach tools/methods; and discussion on generalized project program elements and preliminary capital budget.

Playground Task Force (PFT) Meeting 1

- Review/discuss site analysis (constraints/opportunities) and other pertinent findings from research; discussion on project program development and preliminary capital budget; and review of objectives and presentation materials/format for the initial Community Forum.

Community Forum 1

- Using multimedia formats (PowerPoint, board mounted graphics, printed handouts, etc.), provide a general overview of the Master Planning process, goals and objectives of the project; review of the site locations and context within the school district; review of site analysis findings; obtain input on the “needs/wants” of the stakeholders and distill down based on priority/importance; and initiate conceptual design discussion with meeting attendees in an interactive forum.

PFT Meeting 2

- Recap information and discussion from the initial Community Forum; review and refine as needed the program and budget development; review and refine conceptual design schematic site plans prepared; and discuss objectives and presentation materials/format for the second Public Forum.

Community Forum 2

- Using multimedia formats (PowerPoint, board mounted graphics, printed handouts, etc.), provide a brief recap of the meetings, stakeholder input and design progress to date; introduce conceptual design schematic site plans and present the design progression/synthesis and program elements incorporated; and obtain input and refinement from meeting attendees in an interactive forum.

School Board of Directors Meeting 1

- Prepare and present a Power Point presentation outlining all the planning process steps and stakeholder input/guidance to date; review the conceptual design schematic site plans along with feedback from the Community Forums; and provide an overview of the process and schedule moving forward to project completion.

APS Meeting 2

- Review the “Final” Conceptual Site Plans, preliminary cost estimates and phasing; and review and discuss final deliverable materials, organization and formats.

School Board of Directors Meeting 2

- Prepare and present a Power Point presentation summarizing the overall project process and final Playground Master Plan for the school district.

Additional Meetings: As requested in the Request for Proposals, a per meeting fee beyond those required above, is provided in Section 2 “Fee Structure”. The basis of the fee has been established using a meeting duration of 1.75 hours plus 1.0 hour for preparation/travel/team debriefing.

E. Conceptual Design

1. Prepare conceptual site design alternatives based upon the program elements derived from the stakeholder input and site analyses. The conceptual designs will be to scale and hand drawn over the project basemap at a graphic level to sufficiently illustrate the design intent and key features.
2. Prepare a narrative evaluation of the concepts that describes the positive and negative attributes of each design concept.
3. Develop preliminary cost estimates and potential phasing strategies for discussion and guidance through the remaining design process.

F. “Final” Design

1. Based upon all input and guidance received from the stakeholder engagement process, prepare the final conceptual site plans as full color graphic renderings. At the direction of SCASD, these plans can either be prepared in CAD format (better for future implementation) or remain as hand drawn similar to the “Conceptual Design” graphic as described above. (For purposes of establishing our fee, we have included time to prepare the Final Design graphics in CAD format.)
2. Prepare final cost estimates and improvement phasing plan/narrative for each of the school projects.

G. Master Plan Deliverables and Assembly

ELA will collect and collate all narrative, plans and pertinent documentation from the activities of the above sections and assemble as a single digital (PDF) file and as generally outlined below:

- Executive Summary
- Final Conceptual Site Plan Renderings, reduced size
- Narrative Description, including cost estimates and phasing for each project site
- Appendices with supporting background information
 - Pertinent notes from all Stakeholder Engagement activities
 - All developed plan concepts, sketches and graphics in a reduced format.
- Separate Full Size Final Conceptual Site Plan Renderings (full size anticipated to be 24” x 36”)

Playground Master Planning and Design Services

State College Area
School District

4 Tentative Project Timeline

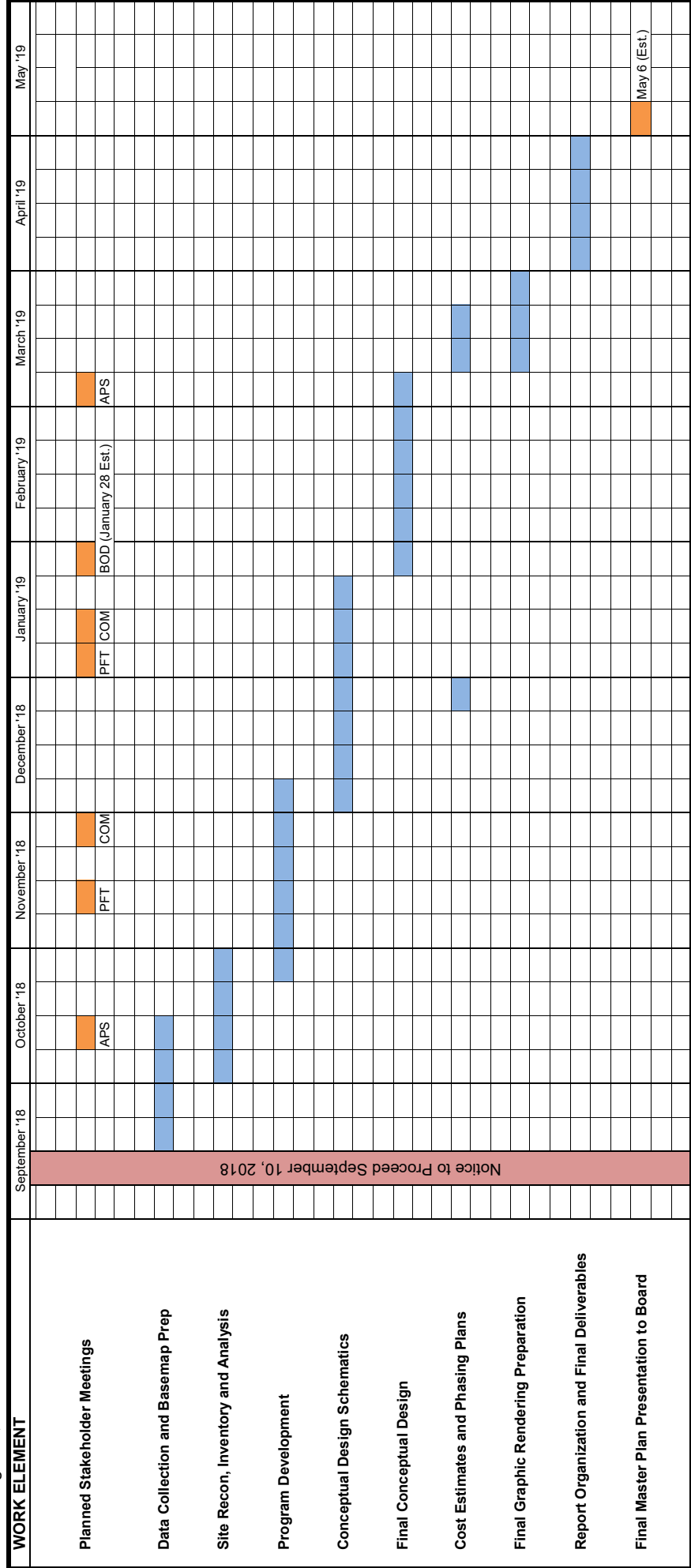




SCHEMATIC PROJECT TIMETABLE

State College Area School District
Playground Master Planning

Date: August 3, 2018



LEGEND

- BOD** SCASD Board of School Directors
- APS** SCASD Administrative and Professional Staff
- PTF** SCASD Playground Task Force
- COM** Community Meeting

- Task Duration
- Key Milestone / Meeting

Playground Master Planning and Design Services

State College Area
School District

5 Project Team

Key Personnel Overview and Responsibilities

Resumes

Matthew R. Harlow, RLA

Todd H. Smith

Michael C. Huxta, RLA

Brent D. Good, RLA



KEY PERSONNEL OVERVIEW AND RESPONSIBILITIES

The professional staff identified to be on the project team are readily available to work on this project to assure the project is completed within the schedule and on budget. The project will be developed and managed from our State College office. The State College office is fully self-sufficient in terms of resources and technology to fully execute the project from start to finish. In addition, our office location on Sandy Drive and Science Park Road assures the ability for our staff to provide a quick and efficient response to the school district's requests.

Matthew R. Harlow, RLA

Mr. Harlow will be the project's primary designer and client contact and his responsibilities will include oversight of all aspects of the project, stakeholder engagement facilitator, direct supervision of the design team members, coordination of all plans and documents, contract management, staff scheduling and project quality assurance.

Todd H. Smith

Mr. Smith will be the project's lead design and information coordinator and will assist with stakeholder engagement activities. He will be heavily involved with site analysis and inventory activities based on his extensive local knowledge of many of the project sites and surrounding areas.

Michael C. Huxta, RLA

Mr. Huxta's primary responsibilities will be assisting in site analysis and existing playground equipment evaluations as well as providing design input based on his Certified Playground Safety Inspector credentials and experiences.

Brent D. Good, RLA

Mr. Good's primary responsibility will be to provide support, guidance and design input on all aspects of the project, mainly focusing on landscape materials and planting recommendations.

Brandon L. Meck

Mr. Meck will be the graphic coordinator with a primary responsibility for preparation of renderings and other graphics.

Responsibility Percentages by team member are as follows:

Matthew R. Harlow, RLA	35%
Todd H. Smith	20%
Michael C. Huxta, RLA	10%
Brent D. Good, RLA	15%
Brandon L. Meck	5%
ELA CADD Tech Support	15%



Offices in Pennsylvania
Lititz 717.626.7271
State College 814.861.6328
Butler 724.256.9646
www.elagroup.com



Registration:

Landscape Architect,
PA and NY

Education:

Pennsylvania State University, PA
B.S. Landscape Architecture – 1989

Professional/Technical Affiliations:

- ◆ Pennsylvania Planning Association

Training:

- ◆ Annual PA Greenways and Trail Summit
- ◆ PA DEP Chapter 105 (Waterway Management) Workshop
- ◆ Professional Registration Continuing Education

Previous Experience:

Project Manager

Herbert, Rowland & Grubic, Inc.
Lancaster, PA
9/89 – 1/97

Years of Experience:

Years with this firm: 21.5 yrs
Years with other firms: 7 yrs

MATTHEW R. HARLOW, RLA

Principal & Division Director: Central PA Office

Responsibilities:

Mr. Harlow joined ELA Group, Inc., in January 1997 as a Project Manager. In August of 2000, Mr. Harlow opened the Central Pennsylvania Regional Office of ELA Group, Inc. and currently is the Principal & Division Director. His responsibilities include project management/client coordination, oversight and preparation of all aspects of Site Design, Land Development and Subdivision Plans, Master Planning, Due Diligence, Construction and Bidding Documents, construction administration and observation, public presentations/outreach and client representation.

Key Project Experience:

Parks/Recreational

- Various Projects, Involved with design of over 25 parks/recreation projects in the Central and Eastern parts of Pennsylvania. Projects varied from small neighborhood scale to regional scale facilities.
- Bernel Road Park, Patton Township, Centre County, PA – Prepared overall design and construction documents for the 75-acre regional park which includes several athletic fields, tennis courts, 1-mile paved walking/fitness trails, large airport themed playground for varying age groups, nine-hole disc golf course and several picnic areas with pavilions.
- Blue Spring Park, Harris Township, Centre County, PA – Provided design and engineering services for the addition of a full size basketball court. Services included court location and orientation, construction detailing, bid document preparation and field observation.
- Buch Farm Athletic Complex, Warwick School District, Warwick Township/Lititz Borough, PA – Design for new competition and practice fields for field hockey, soccer, football, baseball, softball and track/field venues on the 80 acre campus.
- Kelker Park, Steelton Borough, Dauphin County, PA – Developed the Master Plan to include active and passive family recreation venues for the 10 acre tract. The facility is a model example for land recycling as the site was a former landfill.
- Huston Township Park Master Planning, Huston Township, Centre County, PA – Provided consulting services to the Township's Park and Recreation Authority for location and feasibility of park and recreation facilities within the Township.
- Medal of Honor Memorial at Soldier's Grove, Commonwealth's Capitol Campus Complex, Harrisburg, Dauphin County, PA – Construction drawings and design detailing for the memorial park.
- Medlar Field at Lubrano Park, College Township, Centre County, PA – Topographical surveying, basemapping and grading plan for the natural grass renewal for the baseball field surface.
- Suburban Park Master Plan, Ferguson Township, Centre County, PA – Facilitated public participation meetings for development of a Master Plan for the 11-acre neighborhood park. The plan included reorientation and addition of active and passive recreation venues.
- Unionville Borough Community Park, Unionville Borough, Centre County, PA – Design and prepared an overall Master Plan for the 30 plus acre park and prepared construction documents for Phase 1 implementation, which included a new playground area and nearly one-half mile of stabilized aggregate multi-use trail.

Institutional

- Solomon Solis-Cohen Elementary School, School District of Philadelphia, Landscaping and Playground Design, City of Philadelphia, PA – Design and construction drawings for complete campus landscaping and playgrounds for the 1,400-student elementary school in Philadelphia. The design included naturalized landscape features with educational opportunities and an expansive playground with synthetic turf play field, unique running "track" and creative hard surface "games".



Offices in Pennsylvania
Lititz 717.626.7271
State College 814.861.6328
Butler 724.256.9646
www.elagroup.com

ENGINEERS • LANDSCAPE ARCHITECTS

Key Project Experience:

- State College Area High School, Additions and Renovations, Borough of State College, Centre County, PA – Site design, land development planning and construction drawings for the High School additions and renovations, which includes an approximate 600,000 SF in buildings, significant parking, circulation and pedestrian improvements, traffic impact studies, utility infrastructure upgrades and storm water management improvements.
- State College Area School District, Miscellaneous Projects, Centre County, PA – Projects include: Design and construction documents for Summer Site Work for High School, design and construction documents for temporary parking facilities at the High School; and design and permitting of a Rectangular Rapid Flash Beacon pedestrian signal through PENNDOT for a pedestrian crossing of a State College Borough street.
- State College Area School District, Spring Creek Elementary School, Centre County, PA – Land Development Plans and construction documents for new elementary school on the site of the exiting Elementary School, which included parking and circulation improvements with separate bus loop and parent drop-off, stormwater management, erosion and sedimentation control and utility infrastructure. The project also includes maintaining and improving bicycle and pedestrian community connection.
- State College Area School District, Pre-Referendum Planning, Centre County, PA – Development of a district wide analysis of 23 vacant properties suitable for a high school with an evaluation matrix and sketch planning of the three final properties for the school board and community input and selection as part of the pre-referendum information.
- State College Area School District, Radio Park and Corl Street Elementary Schools – Additions and Renovations, Centre County, PA – Land Development Plans and construction documents for the additions and renovations to the exiting Elementary Schools, which included parking and circulation improvements with separate bus loop and parent drop-off, stormwater management, erosion and sedimentation control and utility infrastructure. The project also includes maintaining and improving bicycle and pedestrian community connection.
- Bellefonte Area School District, Miscellaneous Projects, Centre County, PA – Provided design and engineering services for various projects for the school district.
- Greater Nanticoke Area School District – Athletic Fields Renovations, Nanticoke Borough, Luzerne County, PA – Design documents and agency approvals for the complete reconstruction and renovation of existing baseball, soccer and practice football fields on the District campus. The fields, encompassing nearly five-acres in total construction area, included full, sub-surface sand trench drainage system with sod turf installation throughout. Other amenities included baseball infield reconstruction, backstop and foul line fencing, water system for irrigation and electrical upgrades for a new scoreboard.
- Marion-Walker Elementary School, Additions and Renovations, Walker Township, Centre County, PA – Land Development Plans and construction documents for the additions and renovations to the existing Elementary School, which included parking and circulation improvements with separate bus loop and parent drop-off and utility infrastructure improvements including an on-site waste water disposal facility.
- Middletown Area School District, Feaser/Fink Campus, Middletown Borough, Dauphin County, PA – Design and construction documents for site renovations and building additions on the Urban Campus.
- Middletown Area School District, John C. Kunkel Elementary School, Lower Swatara Township, Dauphin County, PA – Design and construction documents for site renovations and building additions.
- Minersville Area School District, Schuylkill County, PA – Assisted in the “District Wide Feasibility Study” for the school district, which included inventory, analysis and assessments of three existing educational facilities/campuses and their athletic facilities. The study will guide the school district in decisions for improvements to their educational facilities.
- Philipsburg-Osceola High School, Sports Field, Philipsburg Borough, Centre County, PA – Design, engineering and construction documents for a new all weather surface running track, practice football field, baseball and softball fields and additional parking facilities.
- Susquehanna Township School District-Site Evaluation, Susquehanna Township, Dauphin County, PA – Prepared detailed site analysis and evaluation for the school district to guide their decision to acquire several large properties for future school campus development.



Education:

Pennsylvania State University, PA
B.S. Landscape Architecture – 1988

Professional/Technical Affiliations:

- ◆ American Planning Association, 2002
- ◆ Pennsylvania Planning Association, 2002
- ◆ Centre County Chamber of Business and Industry – Heritage I, 2004
- ◆ Centre County Association of Realtors – Affiliate Member, 2008

Previous Experience:

Zoning Administrator

College Township, Centre County, PA
10/96 – 10/00

Zoning/Assistant Codes Admin.

City of Harrisburg, PA
4/92 – 10/96

Planner/Drafter

Harlin J. Wall, Architect and Associates
State College, PA
6/87 – 11/91

Years of Experience:

Years with this firm: 18 yrs
Years with other firms: 12 yrs

Responsibilities:

Mr. Smith joined ELA Group, Inc. in October 2000 in the position of Project Manager. His responsibilities include project management/coordination, athletic venue programming, feasibility studies and site master planning, preparation of all aspects of Land Development and Subdivision Plans, Erosion and Sediment Control Plans, Landscaping Plans, Construction and Bidding Documents, Construction Administration and Observation and Client/Owner representation at project meetings and at municipal authority boards and commissions.

Key Project Experience:

Parks/Recreational

- Tri-Municipal - Park Master Site Development Plan, Potter Township, Centre County, PA – Preparation of a Master Site Development Plan for a multi-municipal regional park. Potter Township, Gregg Township, and Centre Hall Borough worked cooperatively to purchase and master plan a 265 acre tract of land in Potter Township. Through planning committee meetings, public meetings and a resident user activities survey, the plan was finalized to include multiple all purpose playing fields, tournament baseball and soccer facilities, skate park and hockey rink, various play ground areas, walking and exercise trails, a local arboretum, sledding area, a community center, amphitheater and a conservation area to promote the growth of birds and animals native to the area.
- Park Forest Pool Master Renovation Plan, Patton Township, Centre County, PA – Worked with the Project Architect and Pool Consultant to evaluate, inventory and analyze the existing Park Forest Community Pool for renovations and enhancements. The project sketch plan scenarios were reviewed at several public meetings, a park and recreation committee series of meetings and final presentation and review by the Municipal Council of Governments for Centre County Region. Enhancements and renovations were identified for the physical pool amenities such as a new bath house and pool mechanical building, a new 6 lane pool with a diving area, a new children's wading pool with a spray area and water slide features for youth.
- William L. Welch Pool Master Site Renewal Plan, State College Borough, Centre County, PA – Worked with Project Pool Consultant for developing multiple Master Site Plan options for the existing Regional Pool Facility on shared property with the School District. The process included site analysis, existing facility inventory, Community meetings and ultimate approval by the Council of Governments. Prepared Land Development Plans and Construction Documents and provided Construction Administration.
- Millheim Borough Community Park Master Plan, Millheim Borough, Centre County, PA – Working with the Millheim Borough staff, Council members, residents and community sports organizations in the preparation of a Facility Master Plan for the renovation and upgrade to Millheim Community Park. The facility provides recreation and athletic venues for the community at-large as well as for programs that are based within the Municipal Building. The goal of the Master Plan was to provide diverse opportunities to fulfill the needs of the community. The existing facilities were aged and in need of upgrading for safety and interest level and efficient use during simultaneous activities.
- Suburban Park Master Plan, Ferguson Township, Centre County, PA – Organized, facilitated and conducted four Public Meetings for Master Planning activities for an existing 12-acre neighborhood park within the Centre Region Parks and Recreation Program. Four conceptual sketches were analyzed from which a final Master Plan was developed using design elements from each sketch.
- Spring Township Municipal Park, Spring Township, Centre County, PA – Master Planning Municipal Park on shared lands of the Bellefonte Area School District and Spring Township. Phase I Construction Documents, Specifications and Bid Documents.
- Blue Spring Park, Harris Township, Centre County, PA – Site design and construction documents for a new basketball facility in the Park.

Key Project Experience:

Institutional

- State College Area School District, Spring Creek Elementary School, Centre County, PA – Land Development Plans and construction documents for new elementary school on the site of the exiting Elementary School, which included parking and circulation improvements with separate bus loop and parent drop-off, stormwater management, erosion and sedimentation control and utility infrastructure. The project also includes maintaining and improving bicycle and pedestrian community connection.
- State College Area School District – Modular Classroom Planning, Corl Street Elementary School, State College Borough, Centre County, PA – Prepared Land Development Plan set for installation of modular classroom. Facilitated review process by the State College Borough Architectural Review Board, Planning Commission and Municipal Staff. Project included additions to parking facilities, landscape planting and ADA accessibility.
- Lewisburg Area School District New High School, Kelly Township, Union County, PA – Master Planning and construction documents for a new high school on 200 acre site. Planning included master planning the entire site for the school district and then documents for the construction of the new high school. Planning included vehicular access and parking, bike and pedestrian facilities, playing fields, all utilities, and pedestrian school signal permitting.
- BEASD High School, Middle School and Elementary School, Boggs Township, Centre County, PA – Additions and renovations to the Middle/High School and Wingate Elementary School Campus. The campus is approximately 200 acres. Site improvements included new parking/circulation and stormwater and utility connections.
- Bellefonte Area High School, Bellefonte Borough, Centre County, PA – Additions and renovations to the existing High School Facility which includes: Building additions, new bus and parent staging/drop-off areas, new internal vehicular circulation, new parking areas, and stormwater management facilities.
- Bellefonte Area High School Master Plan, Bellefonte Borough, Centre County, PA – Based on the Athletics Feasibility Study, the School Board authorized a Master Plan to be prepared on the existing High School site and a nearby property. The Master Plan included relocating the existing baseball field and creating separate varsity and junior varsity fields with supporting facilities. In addition to the baseball venues, the Master Plan also included areas for soccer fields, softball fields, a cross country course (that included varying lengths for training) and the potential for an indoor instructional office/facility. All of these facilities will serve the functions and programs of the School District as well as the public-programmed use. A key issue in developing the Master Plan is that the existing High School property is proposed to be improved with a new stadium facility to serve the football, soccer, and track programs of the High School with an adjacent open turf field for track and field events, practice football and band practice.
- Greenberg Indoor Sports Complex Ice Hockey Arena, The Pennsylvania State University, University Park Campus, State College Borough, PA – Prepared planning design, land development plans and construction documents for additions and renovations to the exiting *Penn State Icers Arena*. The project included complete replacement of the interior ice rink, locker rooms, utility service areas, and zamboni access. The exterior site work included an addition to the building to house new refrigeration equipment, a redesign of the main access way that included a skater drop off area, ADA parking, pedestrian enhancements and storm water management facilities.

*Exploring Possibilities....
...Finding Solutions*



Registration:

Landscape Architect, PA

MICHAEL C. HUXTA, RLA
Senior Project Manager

Responsibilities:

Mr. Huxta joined ELA Group, Inc. following graduation from Temple University in 1997. His experience includes the design, project coordination, and project management related to the development of commercial/industrial, recreational, and institutional sites. His responsibilities include land planning/land development project management, schematic site design, master planning, grading, drainage, and storm water management design, erosion and sediment control planning/permitting, utility design, construction/bid document preparation and Playground Safety Inspections.

Certifications:

- ◆ Certified Playground Safety Inspector, PA
2004 - Present

Key Project Experience:

Education:

Temple University
B.S. Landscape Architecture - 1997

Playground Safety Audits and Inspections

- Bethlehem Township, Lehigh County, PA – Seven playgrounds at five public parks were evaluated for safety issues so the Township can begin to develop an inspection program for their facilities.
- City of Reading, Berks County, PA – Evaluated 26 Public Playgrounds in the City Of Reading for safety issue's as part of their Ten Year Parks and Open Space Plan.
- Manheim Township School District, Manheim Township, Lancaster County, PA – Recurring Playground Safety Inspections for six elementary schools in the District totaling ten playgrounds.
- Warwick Township, Lancaster County, PA – Seventeen public and privately owned playgrounds were evaluated for safety issue's as part of the Township's Regional Park and Recreation Comprehensive Plan.

Years of Experience:

Years with this firm: 21 yrs
Years with other firms: 0 yrs

Parks/Recreational

- Berwick Area School District All-Weather Running Track & Multi-Purpose Field, Berwick Borough, Columbia County, PA – Design services provided include Feasibility Study, Master Planning and cost estimate for a new all-weather running track and field venues, multi-purpose field, grandstands and field house.
- Blue Mountain School District Athletic Facility Improvements, North Manheim Township, Schuylkill County, PA – Design services provided include Concept Plans, Feasibility Study and cost estimate to investigate the option of constructing new turf fields or converting to a synthetic turf field, field lighting, bleachers at five fields, restrooms, handicapped accessible trail, tennis court surfacing and various improvements to indoor athletic facilities.
- Conestoga Greenway Walking and Biking Trail, Lancaster City and Lancaster Township, Lancaster County, PA – Land Development Planning, Zoning, DEP Permitting and Erosion and Sedimentation Control Plans for a one mile walking and biking path with parking facilities along the Conestoga River.
- Conestoga Valley High School Synthetic Turf Fields and Stadium Improvements, East Lampeter Township, Lancaster County, PA – Master Planning and Land Development Planning for stadium renovations including three new Synthetic Surface Athletic Fields, new building for equipment storage, new ticket booth and entrance plaza, grandstand renovations, stadium lighting, inter-campus access drive and storm water management improvements.
- Eagle Recreation Complex for Blue Mountain Recreation Commission, Orwigsburg Borough, Schuylkill County, PA – Design services, Construction Documentation, and Erosion and Sedimentation Control Plans for football, baseball, softball and soccer venues, walking trail, recreation commission offices, and parking facilities.
- Ephrata Middle School Synthetic Turf Multi-Purpose Field, Ephrata Area School District, Lancaster County, PA – Replacement of the existing natural grass field with the installation of new synthetic turf field, construction of retaining walls surrounding the field, installation of new stadium lighting and construction of new areas for location of portable bleachers. Included construction document preparation and construction administration services.



Offices in Pennsylvania
Lititz 717.626.7271
State College 814.861.6328
Butler 724.220.6850
www.elagroup.com

Key Project Experience:

- Multi-Purpose Field and Track Stadium Improvements – Feasibility Study and Master Plan, Ephrata Area School District, Ephrata Borough, Lancaster County, PA – Design services provided include master planning and cost estimate for a new Synthetic Surface Multi-Purpose Field, improvements to track and field venues, restrooms facilities, grandstands, stadium lighting, parking improvements, storage and field house.
- South Middleton School District Athletic Field Improvements, South Middleton Township, Cumberland County, PA – Design services provided include Site Design and Land Development Planning approval process for relocating and improving athletic fields with new stormwater management facilities on existing 61 acre campus. Design includes baseball, softball, soccer and lacrosse fields; track and field throwing venues; new access drive with handicapped accessible parking areas.
- W. Market Street Park Master Plan, South Londonderry Township, Lebanon County, PA – Design services provided include multi-phase master planning and cost estimate for additions and renovations to an existing park in Campbelltown to be used for a DCNR Grant Application.
- Warwick to Ephrata Rail Trail, Akron Borough & Ephrata Township, Lancaster County, PA – Preparation of bidding and construction plans for a paved rail trail with culvert and at-grade street crossings, seating areas, storm water controls and erosion and sediment control planning. Design and planning was done in two phases.
- Weaver Road Municipal Park – Site Design and Land Development Planning, Manheim Township, Manheim Township, Lancaster County, PA – Design services provided include Site Design, Land Development Planning and approval process for a new park located on an approximately 40 acre site. Park includes synthetic turf football and soccer fields, baseball, and softball fields; walking and biking path; restroom and concession stands; new access drives, roadway improvements and parking areas. Work also included renovation to existing barn, stadium lighting, and road improvements including a traffic signal.
- West Lampeter Community Park, West Lampeter Township, Lancaster County, PA – Design and Construction Documents for additions to the W. Lampeter Community Park. Plans include the layout design for expansion of access drive, parking facilities, walking trail and athletic fields on newly acquired land adjacent to the existing park.

Institutional

- Annville-Cleona Secondary Campus, Annville-Cleona School District, South Annville Township, Lebanon County, PA – Zoning, Land Development Planning and Construction Documentation for a new Secondary School and renovations to the existing school campus.
- East Earl Municipal Campus Master Plan, East Earl Township, Lancaster County, PA – Design Services include master planning of an existing municipal campus to provide a new building for Township Offices and Police Station, public works building and maintenance facility with new access drives and parking facilities.
- Lancaster Township Fire Company, Lancaster Township, Lancaster County, PA – Lot Add-on Plan and Master Planning for development of a new Fire Company site for a two story building, storm water facilities, access drives and parking areas.
- Montessori Academy of Lancaster, Manheim Township, Lancaster County, PA – Zoning, Land Development Planning and Erosion and Sedimentation Control Plans for additions to the existing school campus.
- Whistle Stop Plaza, Ephrata Borough, Lancaster County, PA – Design of outdoor plaza with bandstand, plantings and seat walls at the historic train station in the Borough of Ephrata. Worked with Borough Staff to design the plaza and create construction documents for bidding and construction.



Registration:

Landscape Architect, PA

BRENT D. GOOD, RLA

Senior Project Manager

Responsibilities:

Mr. Good joined ELA Group, Inc. in November 2000 following tenures at D.C. Gohn Assoc., Inc. (Mount Joy), Tomlinson Bomberger Landscape (Lancaster), and Rettew Assoc., Inc. (Lancaster). Mr. Good is responsible for project management with emphasis in internal plan development. His experience includes the development of commercial/industrial, recreational, institutional and residential sites with emphasis in residential subdivisions and landscape design. His responsibilities involve site layout, grading, planting plans, drainage and storm water management, utilities, erosion and sediment control, site analysis, construction drawings and specifications, and construction observation.

Education:

Pennsylvania State University, PA
B.S. Landscape Architecture – 1989

Key Project Experience:

Professional/Technical Affiliations:

- ◆ Trout Unlimited
- ◆ Lititz Run Watershed Alliance

Institutional

- Solomon Solis-Cohen Elementary School, School District of Philadelphia, Landscaping and Playground Design, City of Philadelphia, PA – Collaboration with Client and Architect, landscaping design and planting selections for landscape plans to obtain approval from the City of Philadelphia.
- Lancaster Country Day School Expansion, Manheim and Lancaster Townships, Lancaster County, PA – Construction Administration, developed additional Construction Documents, and Culvert customization (concrete collar around the culvert to protect the water main). Roadway paving, curbing and sidewalk improvements.
- Warwick High School, Lititz Borough & Warwick Township, Lancaster County, PA – Aided in design and construction documentation for a building expansion, grading, courtyard layouts, planting plans and storm water improvements.
- John Beck Elementary School, Warwick School District, Warwick Township, Lancaster County, PA – Aided in design and construction documentation for a building expansion, play areas, and planting plan.
- Kissel Hill Elementary School, Warwick School District, Warwick Township, Lancaster County, PA – Aided in design and construction documentation for a building expansion, grading, interior courtyard, play areas, planting plan, parking and drop-off facilities and storm water improvements.
- Kutztown University of Pennsylvania, for Gilbert Architects, Maxatawny Township, Berks, County, PA – Design and consultation of multiple campus locations involving various landscape improvements along with the development of a landscape maintenance manual for the University.
- Muhlenberg High School, for EHC Associates, Muhlenberg Township, Berks County, PA – Aided EHC in land development planning and approval involving Lead-Contaminated Soils Remediation for the school. Integral in grading, Erosion Control Design, Landscape Design and Technical Specifications.
- St Clements, Redemptorist Fathers of PA, for Global Facilities Management, LLC, Ephrata Borough, Lancaster County, PA – Conceptual Entry Courtyard Design with integration of layout and landscape design.
- Welsh Mountain Home, Salisbury Township, Lancaster County, PA – Integral in obtaining needed Zoning Variances and Final Subdivision and LD Plan approval for a 36-Unit Tax Credit Senior Housing Apartment Building in an environmentally sensitive area of the Township.
- Welsh Mountain Home Kitchen Expansion, Salisbury Township, Lancaster County, PA – Coordinated approval of LD Plan for a Kitchen/Dinning expansion for the Home.
- Camp Conquest, West Cocalico Township, Lancaster County, PA – Developed Master plan for 90-acre Camp, analysis of existing septic system, consulted with DEP for repair upgrades to septic system with drip-irrigation field. Will be providing Zoning Special Exception in the Ecologically Sensitive District, and Land Development services for the camp.

Previous Experience:

Designer

D.C. Gohn Assoc., Inc.
Mount Joy, PA
5/89 – 4/92

Designer/Manager

Tomlinson Bomberger, Inc.
Lancaster, PA
4/92 – 8/98

Assistant Manager

Rettew Associates, Inc.
Lancaster, PA
8/98 – 11/00

Years of Experience:

Years with this firm: 17.75 yrs
Years with other firms: 11 yrs



Offices in Pennsylvania
Lititz 717.626.7271
State College 814.861.6328
Butler 724.256.9646
www.elagroup.com

ENGINEERS • LANDSCAPE ARCHITECTS

Key Project Experience:

Landscape Design

- Building Industry Association of Lancaster County, 1794 Oregon Pike, Lancaster, PA – A new plan was designed in order to refurbish and restore the existing landscape areas to enhance the early American style of the office building.
- Markley Residence, West Lampeter Township, Lancaster, PA – An overall scheme and plan was developed for this new single-family residence by analyzing the existing site while meeting the client's desired intentions.
- Park City Center, Manheim Township, Lancaster County, PA. Developed multiple landscape plans to enhance new entrance signage for the popular local shopping mall.
- PA Garden Expo 2008, Farm Show Complex, Harrisburg, PA – Worked closely with PA Park & Forest Foundation along with 4 other partnering state agencies. This educational garden exhibit was unique in that it advocated to the general public the use of PA native plant species. Responsible for the garden design and native plant schedule along with the graphic rendering of the garden used in the expo brochure.
- Lancaster General Health, Duke Street Landscape, Lancaster, PA – Redesigned the Duke Street foundation landscape of the downtown hospital to be lower maintenance while providing all-season interest. Developed construction landscape plans and technical specifications and oversaw installation.
- The Long Community at Highland, Manheim Township, Lancaster County, PA – Overall landscape plan for new retirement village for Presbyterian Senior Living.
- Vista Ridge at Ware Presbyterian Village, Oxford Borough, Chester County, PA – Landscape Master Plan for Vista Ridge, including new dining hall and cottages for Presbyterian Senior Living.
- Penn Township Well Site, Lancaster County, PA – Developed a Public Park plan and specifications around Township's water treatment facility for demonstration and education purposes of sustainability components through trail system of various BMP's, solar farm, and a wildflower meadow.
- Wildflower Meadow for Lockheed-Martin, Corp., Upper Merion Township, King of Prussia, PA – Prepared site plans and specifications for converting 7-acres of lawn into a wildflower meadow.
- Unionville High School, East Marlborough Township, Kennett Square, PA – Prepared extensive BMP and buffer planting plans.

Residential

- Mill Creek, A Planned Community, for Charlan Group, L.P., West Lampeter Township, Lancaster County, PA – Integral in carrying out a conceptual plan through to a set of working drawings of a 237 unit, 85-acre unique cluster development utilizing the Township's new Neighborhood Design Option.
- Arbor Greene Subdivision, North Londonderry Township, Lebanon County, PA – Integral in Design and subdivision planning for a 209 unit, 123-acre residential development with contiguous green-spaces linked by a pedestrian trail system.
- Lauffer Hill Subdivision, Londonderry Township, Dauphin County, PA – Managed the design and planning of this 100 unit "Cluster Option" residential subdivision within 117-acres. The linear site is unique with homes integrated among hilly, wooded terrain and linked to preserved open spaces containing wetland areas.
- Pyle Tract, East Earl Township, Lancaster County, PA – After working with the Township to craft new zoning text, Smart Growth Neighborhood Overlay, working on behalf of the Developer to orchestrate Zoning, Sketch, Preliminary and Final Plan approvals for this 365 unit community with a commercial/retail Main Street.

Special Interest

- Streetscape Plan for Penn Township, Lancaster County, PA – Preparation of streetscape plan for 1.7 mile of Doe Run and N. Penryn Roads. Plan included site study and report, including the appropriate streetscape components to design "Complete Streets", and "Pedestrian Pocket Parks", including materials cost estimates and implementation procedures.
- East Earl Township, Smart Growth Neighborhood Overlay District, Lancaster County, PA – Represented the Township in the preparation of specialized zoning text to enable a unique mixed-use community in their Neighborhood Commercial District. Met and corresponded with the Township and developer to come to an agreement in terms of design requirements.



Exploring Possibilities....
...Finding Solutions

Playground Master Planning and Design Services

State College Area
School District

6 Project Experience

Project Experience Elucidation

Park & Recreation Projects

Relevant Project Experience:

Solomon Solis-Cohen School Playground (SP)

Solomon Solis-Cohen School Playground (R)

Bernel Road Park

Lititz Elementary School

William L. Welch Community Swimming Pool

Local Parks and Recreation Experience

Other Project Experience:

State College Area High School

Alternate Sites and Master Planning (2013)

Educational Facilities Clients

State College Area School District Projects



PROJECT EXPERIENCE ELUCIDATION

Upon preparation of our Proposal and assembling our similar project experience reference material, we discovered our portfolio was lacking in projects completed in the past five (5) years. In trying to figure out why we lack recent project experience, it became quite apparent that our State College office was completely immersed in State College Area School District (SCASD) projects. The high school project, from the pre-referendum planning initiatives through the regulatory approval process and right into construction and bidding documents kept our State College office staff at full workload capacity. Then on the heels of the high school project, the elementary schools came on board. During the same timeframe, our Corporate office in Lititz was engaged in several large healthcare projects as well as leading the traffic and logistics planning for the 2015 U.S. Women's Open Championship golf tournament in Lancaster County, PA.

Even with the SCASD projects, our offices have been at capacity including several other school projects throughout Pennsylvania. Nearly every school project we have worked on in the past five (5) years, playground design has been pulled out of the project scope for the school district and their PTO's to develop on their own.

We do have a school playground project that is very similar in nature to the SCASD Playground Master Planning objectives. The project is the Solomon Solis-Cohen Elementary School Playground and it is currently in the bidding process for the School District of Philadelphia.

To "substitute" for our lack of similar project experience within the last five (5) years, we have "older" unique and local public space projects many of which included a Master Plan process. The intent is to illustrate our design creativity and capability.



Offices in Pennsylvania
Lititz 717.626.7271
State College 814.861.6328
Butler 724.256.9646
www.elagroup.com

PARK & RECREATION PROJECTS

ELA Group, Inc. has provided Land Planning/Landscape Architecture Services to the following communities and private organizations that provide public and/or commercial recreation and sports opportunities. The project list that follows is organized to provide a glimpse of the range of planning and implementation services that we have provided, beginning with comprehensive plans and feasibility studies, master plans, improvement and construction plans, and other projects/activities (ranging from grant writing to playground safety inspections).

Comprehensive Plans & Feasibility Studies

Project:

*Aquatic Facilities Complex Feasibility Study
Aquatic Facilities Study
Comprehensive Recreation Park and Open Space Study
Greenways and Trails Feasibility Study
Initial Feasibility Study MA & PA Rail Trail
Rails to Trails Feasibility Study
Toftrees Clubhouse
Tyrone Riverwalk
Warwick to Ephrata Rail Trail Feasibility Study*

Client:

*Manheim Township School District
Conestoga Country Club
Warwick Township
Lititz Borough
Delta Borough / Peach Bottom Twp
Warwick Township
Berger Rental Communities
Tyrone Riverwalk Committee
Akron Borough, Ephrata Borough,
Ephrata Township, & Warwick Township*

Improvement / Construction Plans

Project:

*Bernel Road Park
Blue Mountain Recreation Trail
Blue Spring Park
Camp Mack TBT Memorial
Carter McRae Amphitheater
Community Park Improvements
Conlin Field / Farnum Park
Eagle Recreation Complex
Elementary School Playgrounds (5 Schools)
Elks Club Golf Course
Golf Course Renovations
Heyser Park
Honeybrook Golf Course
Iron Valley Golf Course
Lion's Park
Lititz / Warwick Trailway
Long's Park Trail
Millheim Borough Community Park
Millport Conservancy
Municipal Campus and Park
North Market Street Park
Park Forest Pool
Playground
Polo Fields
Riparian Trail
Ross Street Park*

Client:

*Patton Township
Blue Mountain Recreation Commission
Harris Township
Harold Wiker
School District of Lancaster
West Lampeter Township
City of Lancaster
Blue Mountain School District
School District of Lancaster
Harris Township
Old York Road Country Club
ARRO Consultants
Tom Piersol
Iron Valley Golf Club
Warwick Township
Warwick Township
Lancaster Sertoma Club
Millheim Borough
Landstudies, Inc.
Warwick Township
City of Lancaster
AP Architects (formerly hP Architects)
School District of Lancaster
Warwick Township
Warwick Township
City of Lancaster*

PARK & RECREATION PROJECTS

SACA Park
Skate Park
Strasburg Area Community Park
Warwick Linear Park
Weaver Road Park
West Lampeter Community Park
William L. Welch Community Swimming Pool

Hammel Architects
Lititz Borough
Strasburg Community Park Foundation
Warwick Township
Manheim Township
West Lampeter Township
AP Architects (formerly hP Architects)

Master Plans

Project:

Arbogate Golf Club
Carriage House Golf Club
Cold Stream Dam Park
Community Park
Conestoga Greenway
Eagle Recreation Complex
Honeybrook Golf Course
Hoover Farm Golf & Swim Club
Iron Valley Golf Course
Kelker Park
Lancaster Country Club Master Plan
Markey Park
Millheim Borough Park
Muncy Mountain Park
Municipal Campus and Park
Nittany View Park
Park Forest Community Swimming Pool Renewal
Polo Fields
Skate Park
Strasburg Area Community Park
Suburban Park
Tri-Municipal Park
Upper Leacock Township Park
West Market Street Park
Whistle Shop Plaza Master Plan
William L. Welch Community Swimming Pool

Client:

Louie Hurst
Eastern Development and Design
Phillipsburg Borough
Atglen Borough
City of Lancaster
Blue Mountain School District
Tom Piersol
Will Golf
Iron Valley Golf Club
Navarro & Wright
Lancaster Country Club
York Township
Millheim Borough
Huston Township Park & Recreation Authority
Warwick Township
Harris Township
hP Architects
Warwick Township
Lititz Borough
Strasburg Community Park Foundation
Ferguson Township
Gregg & Potter Townships & Centre Hall Borough
ARRO Consultants
South Londonderry Township
Ephrata Borough
AP Architects (formerly hP Architects)

Other

Project:

Cold Stream Dam Park DCNR Grant Applications
Comprehensive Recreation Park & Open Space Study
Grant Applications
Greenways and Trails Grant Applications
Millheim Borough Parking Master Planning Grant
Playground Grant Applications
Playground Inspections
Riparian Trail Grant Applications
Warwick to Ephrata Rail Trail Grant Applications

Client:

Phillipsburg Borough
Warwick Township

Lititz Borough
Millheim Borough
School District of Lancaster
Manheim Township School District
Warwick Township
Akron Borough, Ephrata Borough
Ephrata Township, Warwick Township

SOLOMON SOLIS-COHEN SCHOOL PLAYGROUND (SHOWCASE PROJECT)

While not on the original project design team, ELA Group, Inc. (ELA), was requested to provide design assistance to develop a “basic” landscaping plan for the Solomon Solis-Cohen elementary school’s 12-acre site in northeast Philadelphia. The “basic” landscaping plan was to include shade trees and minimal shrubs and groundcovers. ELA’s involvement started well into the 90% construction document phase.

Our accelerated learning curve was enhanced by receiving School District of Philadelphia’s “Landscape Guidelines” as well as design input from the school district’s Landscape Architect. The “basic” landscaping plan was now much more complex. As we began developing conceptual landscaping designs for school district review and collaboration, it was quite apparent the design team (which lacked a landscape architect professional until ELA was on board) was struggling with a playground design that was acceptable to the school district. Due to impending deadlines and required approvals from the Philadelphia Art Commission, ELA was requested to take over the entire playground design.

The school district’s vision and program for the playground was to develop a highly open, predominantly all-weather surface play areas with some active sport venues, multiple and creative game options (with built-in learning opportunities) and naturalized spaces to include a variety of low maintenance plant materials with seasonal color and interest for outdoor educational purposes - all to serve over 1,400 students. Quite a challenge to pull off in a very short time frame!

ELA’s design exceeded the school district’s vision and the project is currently in the bid process. The design was presented to the notoriously tough Philadelphia Art Commission and received accolades. In fact, as part of the Art Commission’s motion for approval, a condition was added to have the school district agree to not have any element “value engineered” out of the playground design.

Our design elements included:

- Approximately 28,000 square feet asphalt paved surface with color coatings for multiple games and active sport venues.
- 4,200 square feet of synthetic turf surface (strategically placed over a subsurface storm water detention system).
- 180 meter “running track”, including 2 meter markings for student “line-up”.
- Small, single piece playstructure with rubberized surface - used primarily for kindergarten and 1st grade.
- Naturalized areas with indigenous boulder seating (no benches) and field stone paved walking surfaces.
- Strategic landscape planting areas that includes trees, shrubs, grasses and perennials for shade, texture and color throughout the seasons.
- Entire playground area is fully ADA compliant.

While this project is currently of to bid, we have estimated the construction cost (excluding Philadelphia cost premiums) to be approximately \$350,000.

Contact:

Julie Skierski, RLA
School District of Philadelphia
(Not actual ELA Client)



Offices in Pennsylvania
Lititz 717.626.7271
State College 814.861.6328
Butler 724.256.9646
www.elagroup.com



THE SCHOOL DISTRICT OF PHILADELPHIA

Solomon Solis-Cohen School Playground



Color Coated Pavement with Various "Game" Stencils

All Weather Turf Play Surface

Observation and Rest Oasis (Boulder Seats and Landscape Cut Outs)

Learning Lab (Boulder Seating and Fieldstone Paving)

Rubberized Safety Surface at Play Structure

"Nature Trail and Exploration Garden"

Color Coated Pavement with Stenciled Shapes and Symbols

180 Meter "Track" with 40 Meter Sprint Straight

BERNEL ROAD PARK

Patton Township, Centre County, Pennsylvania



Project Description:

In 2010, ELA Group, Inc. was selected by Patton Township to implement the Master Plan for Bernel Road Park from design and regulatory approvals through construction documents. The Master Plan contemplated a variety of athletic and recreational amenities throughout the 75-acre park parcel which included baseball, softball and multi-use fields, tennis and basketball courts, multi-age group playground, walking trails, pavilions and disc golf. With the park located in close proximity to the University Park Airport, the playground and associated amenities was suggested to have an "airport" design theme. The project had a strict total budget of \$2.1 million which included all construction costs and design service fees.

Client:

Patton Township

Contact:

Susan Wheeler
Parks Project Manager
(814) 234-0271
swheeler@twp.patton.pa.us

Professional Services Provided:

- ◆ Athletic Fields
- ◆ Bid Phase Administration
- ◆ Construction Administration
- ◆ Construction Documents
- ◆ Erosion & Sedimentation Control
- ◆ Highway Occupancy Permitting
- ◆ Land Development Plan
- ◆ Planting Plan
- ◆ Playground Design
- ◆ Retaining Wall Design
- ◆ Stormwater Improvements
- ◆ Stormwater Management
- ◆ Topographic Survey & Boundary

Cost:

\$499,000 (Airport Playground)

The key element of the Park is the airport themed playground. Working directly with a play structure manufacturer and Township Staff, ELA designed the playground as a small scale airport with two separate age group specific play structures flanking a two level "control tower" play structure. The play structures were custom fabricated with each piece being incorporated in the airport theme. Adjacent to the paved "runways", an arch roofed "hanger" pavilion and retaining wall supported "overlook plaza" were incorporated into the design and completed the "airport". The safety surfaces around each play structure consisted of a poured in place rubber with various airplane silhouettes under each piece of play equipment. The result is the most creative and unique playground in the entire Centre Region.

ELA's services included refinement and design of the amenities proposed on the Master Plan. Through the design process, ELA suggested several modifications of the Master Plan which were sensitive to existing site and regulatory constraints and the project budget. ELA performed design and engineering and received municipal approvals for the entire project. Through continual project cost estimating, ELA recommended a phased construction approach since constructing the entire proposed project was far in excess of the Township's budget.



Offices in Pennsylvania
Lititz 717.626.7271
State College 814.861.6328
Butler 724.256.9646
www.elagroup.com

LITITZ ELEMENTARY SCHOOL

Lititz Borough, Lancaster County, Pennsylvania



Client:

Warwick School District

Contact:

David L. Zerbe (Retired)
Business Manager
(717) 626-3734

Professional Services Provided:

- ◆ Construction Administration
- ◆ Construction Documents
- ◆ Erosion & Sedimentation Control
- ◆ Feasibility Study
- ◆ Land Development Plan
- ◆ Miscellaneous Permits
- ◆ Planning Module
- ◆ Playground Design
- ◆ Potable Water Design
- ◆ Retaining Wall Design
- ◆ Roadway Improvements
- ◆ Sanitary Sewer Design
- ◆ Signal Permitting
- ◆ Sketch Plans
- ◆ Stormwater Improvements
- ◆ Stormwater Management
- ◆ Zoning

Cost:

Approximately \$250,000 (Playground)

Project Description:

A new three-story elementary school was constructed (to replace the existing on-site school) in the heart of Lititz Borough – a pedestrian-friendly community. Lititz Elementary School maximizes two sites bridging together approximately 4.1 acres. The new design more than satisfied the school district's needs and enhanced the character of the local neighborhood through architectural style, urban site design, and the preservation of building and site elements.

Many site improvements were made including increasing daily and special event parking and improving site circulation, the streetscape, play areas and outdoor instructional areas. These features, along with the addition of green space and new storm water management controls, contributed to the projects recognition with a 2004 Lancaster County Envision Smart Growth Leadership Award, a 2006 Pennsylvania Planning Association (PPA) Award in the Outstanding Awards category and a 2009 American Society of Landscape Architects (ASLA) Pennsylvania / Delaware Chapter Merit Award in the General Design category.

Awards:

2004 Envision Lancaster County - Smart Growth Leadership Award

2006 Certificate of Merit Award - American Planning Association, Pennsylvania Chapter

2009 Merit Award - American Society of Landscape Architects, Pennsylvania / Delaware Chapter



WILLIAM L. WELCH COMMUNITY SWIMMING POOL

State College Borough, Centre County, Pennsylvania



Photo Courtesy of Sky's The Limit Ballooning, Inc.

Owner:

Centre Regional Recreation Authority
(814) 231-3071

Professional Services Provided:

- ◆ Construction Documents
- ◆ Erosion & Sedimentation Control
- ◆ Feasibility Study
- ◆ Land Development Plan
- ◆ Master Planning
- ◆ Retaining Wall Design
- ◆ Sketch Plans
- ◆ Stormwater Management

Cost:

\$1.2 Million (Site Costs Only)

Project Description:

The facility invites patrons to the main entrance with reaching fingers of washed concrete exposing multi-colored earth toned pebbles. The first view of the facility is the active spray ground featuring various vibrant colored spray structures gently misting and blanketing 1,650 s.f. of interactive play area.

Beyond the spray ground are endless joys in the 7,750 s.f. recreation pool which provides an interactive play structure, a current channel for floating and aerobic workout, a water vortex, and two water slides.

Adjacent to the recreation pool is the 8-lane, 25 yard competition pool with two 1-meter diving boards for competitive swim meets and exercise and instructional programs.

Colors, textures, materials and shapes integrated into the site design enhance the experience of patrons and compliment the shapes and forms of the pools. The slopes of the site enabled the use of retaining walls from 2' height to 8' height to be used as seat walls and as backdrops for lounge chairs. Pockets of synthetic turf are provided throughout the pool deck to provide clean alternative surfaces for patrons to relax around the pools. Beyond the retaining walls the gentle sloping site was formed to create a terraced area for viewing the competition pool during swim meets and functions while the sloped areas beyond provide open grass areas for patrons to sunbathe and overlook the entire facility.



LOCAL PARKS AND RECREATION EXPERIENCE



Harris Township Parks

ELA provided design and engineering services to Harris Township for the addition of a full size basketball court to Blue Spring Park and ADA parking modifications and entrance enhancements to Nittany View Park. Services included surveying, design, construction detailing, bid document preparation and field observation.

Huston Township Park and Recreation Authority

ELA was engaged by the Authority to prepare a Master Site Plan for the Township's Muncy Mountain Park. After the initial site analysis was performed, ELA recommended a cessation of the Plan due to extensive environmental challenges on the site and serious safety concerns with public access to the property. ELA was retained for design and consulting services to the Authority for site selection and schematic design for neighborhood scale parks with baseball venues.



Park Forest Community Swimming Pool and William L. Welch Community Swimming Pool

ELA provided master site planning and all site design/engineering services to APArchitects, LLC (Lead Consultant) in the renewals of both Park Forest and William L. Welch Community Swimming Pools. Both are in service and have been overwhelmingly successful.

Suburban Park

ELA provided design services along with facilitating public participation meetings for development of a Master Plan for the 11 acre neighborhood park in Ferguson Township. The plan included reorientation and addition of active and passive recreation venues.



Unionville Borough Community Park

ELA designed and prepared an overall Master Plan for the 30 plus acre Community Park and prepared construction documents for Phase 1 implementation, which included a new playground area and nearly one-half mile of walking trail. Phase 2 implementation included a full size soccer/multi-purpose field, parking areas and refurbishing of existing basketball and tennis courts.

Millheim Borough Community Park

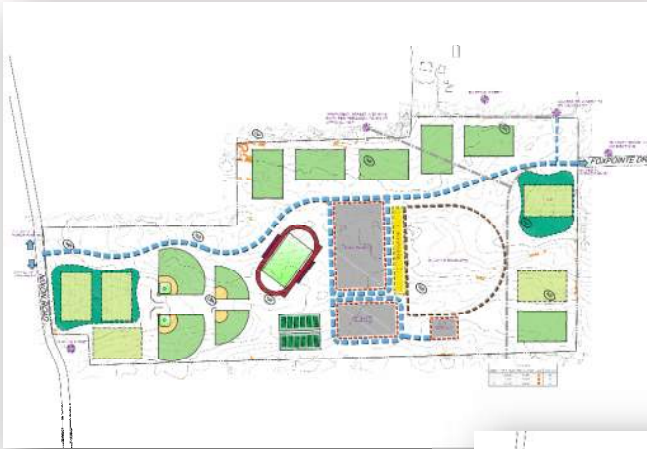
ELA prepared a facility Master Plan and construction documents for the renovation and upgrade to the Borough's existing community park. The facility provides recreation and athletic venues for the community and programs based in the municipal building.



Tri-Municipal Park Master Plan

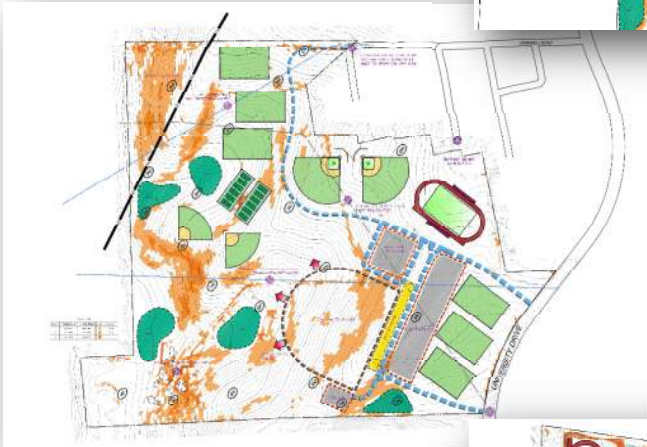
In 2007, a Multi-Municipal Team, Gregg and Potter Township, and Centre Hall Borough, purchased a 165 acre tract of property in Potter Township for the development of a public park. ELA Group, Inc. facilitated Master Planning activities highlighted by public participation forums, citizen park use survey, and outreach to interest groups which, extracted the wants, needs and interests of the community to be incorporated into the Park Master Plan.

STATE COLLEGE AREA HIGH SCHOOL ALTERNATE SITES MASTER PLANNING (2013)



“Site 23” - Ferguson Township

“Site 22” - Ferguson Township



“Site 14” - College and Harris
Townships

Existing High School Campus



EDUCATIONAL FACILITIES CLIENTS



Since our inception, ELA Group, Inc. and ELA Sport, a division of ELA Group, Inc., has made a strong commitment to providing Land Planning/Landscape Architecture Services to educational facility providers, including public school districts, private schools and academies, and colleges and universities. Our service to these institutions has positioned us as one of this region's leaders in educational facility site planning and design. Through our involvement in over one hundred public educational facilities alone, we have been instrumental in changing the landscape and enhancing the learning environment for students of all ages. Whether by providing our services directly to the educational institution itself or in conjunction with its architect, ELA Group and ELA Sport is proud to currently serve or to have served the following institutions.

Public School Districts

(Partial Client List)

<i>Annville-Cleona School District</i>	<i>Manheim Township School District</i>
<i>Bald Eagle Area School District</i>	<i>Marple Newtown School District</i>
<i>Bellefonte Area School District</i>	<i>Middletown Area School District</i>
<i>Berwick Area School District</i>	<i>Northern Lebanon School District</i>
<i>Blue Mountain School District</i>	<i>Octorara Area School District</i>
<i>Chichester School District</i>	<i>Palmyra Area School District</i>
<i>Coatesville Area School District</i>	<i>Penn-Delco School District</i>
<i>Columbia Borough School District</i>	<i>Penn Manor School District</i>
<i>Conestoga Valley School District</i>	<i>Pennsbury School District</i>
<i>Danville Area School District</i>	<i>Philipsburg-Osceola Area School District</i>
<i>Downingtown Area School District</i>	<i>Phoenixville Area School District</i>
<i>East Stroudsburg Area School District</i>	<i>Pottsgrove School District</i>
<i>Eastern York School District</i>	<i>Red Lion School District</i>
<i>Ephrata Area School District</i>	<i>School District of Lancaster</i>
<i>Exeter Township School District</i>	<i>South Middleton School District</i>
<i>Garnet Valley School District</i>	<i>State College Area School District</i>
<i>Glendale School District</i>	<i>Unionville-Chadds Ford School District</i>
<i>Governor Mifflin School District</i>	<i>Upper Merion Area School District</i>
<i>Hatboro-Horsham School District</i>	<i>Upper Moreland School District</i>
<i>Hempfield School District</i>	<i>Warwick School District</i>
<i>Lampeter-Strasburg School District</i>	<i>West Chester Area School District</i>
<i>Lewisburg Area School District</i>	<i>Williamsport Area School District</i>

Private Schools and Academies

(Partial Client List)

<i>Bethlehem Catholic High School</i>	<i>The Far Post</i>
<i>Delaware County Christian School</i>	<i>The Haverford School</i>
<i>Pocono Mountain Charter School</i>	<i>The Phelps School</i>
<i>Summit International School of Ministry</i>	<i>Villa Maria Academy High School</i>
<i>Sussex Academy</i>	<i>William Penn Charter School</i>
<i>The Agnes Irwin School</i>	<i>Wilmington Christian School</i>

Colleges and Universities

(Partial Client List)

Bryn Mawr College
Franklin & Marshall College
Gettysburg College
Grove City College
Harcum College
Harrisburg Area Community College
Kutztown University
Lancaster General College of Nursing & Health Sciences
Lock Haven University
Lycoming College
Millersville University
St. Vincent's College
Shippensburg University
The Pennsylvania State University
(Abington, Brandywine, Harrisburg, Schuylkill, University Park, York)

