



Proposal for:

State College Area School District Master Planning and Design Services

Submitted to:

State College Area School District
Physical Plant Office
131 West Nittany Ave.
State College, Pennsylvania 16801

Submitted by:

Yost Strodoski Mears



Date submitted:

August 3, 2018

Table Of Contents

	<u>Page</u>
1. Cover Letter	2
2,3,4.Fee	3
5. Project Understanding	4
Stakeholder Participation Process	4
Scope of Work: Our Process.....	4
6. Project Timeline	9
7. YSM Team	10
Resumes	11
8. YSM Experience.....	13
YSM Similar Projects.....	13
YSM Firm Profile	23
YSM Additional Projects.....	24



Landscape Architects

August 3, 2018

Ed Poprik
Director of Physical Plant
State College Area School District
131 West Nittany Ave.
State College, Pennsylvania 16801

RE: Playground Master Planning and Design Services for State College Area School District

Dear Mr. Poprik:

State College Area School District is interested in completing master planning and design for 10 school playgrounds. Yost Strodoski Mears (YSM) is pleased to provide this proposal for professional recreation planning and design services.

The master planning and design for the playgrounds will be based on the goals and vision of the District. The playground planning and design will address the input from the District stakeholders identified in the RFP and the community at-large. The concepts of natural playgrounds and play-based learning will be explored and integrated into the designs as appropriate.

YSM has a clear understanding of the work to be performed and has the qualified professionals necessary to complete the project. YSM specializes in park and recreation planning and design and will provide the District with professional design services that emphasizes expertise and experience on similar projects and a comprehensive planning approach to the Playground Master Plans. Our list of projects and references support our successful track record on similar playground planning projects.

Ann Yost of YSM will serve as the principal contact and project manager for the project. She can be contacted at (717) 812-9959 or at anny@ysmla.com. We welcome the opportunity to meet with you to discuss our proposal. If you have any questions, please call. Thank you for the opportunity to respond to this exciting project and we look forward to being part of your team.

Sincerely,

A handwritten signature in blue ink that reads 'Ann E. Yost'.

Ann E. Yost, RLA
Landscape Architect

19 South Newberry Street York, PA 17401
phone (717) 812-9959 • fax (717) 812-9769

www.ysmla.com

Dedicated to the design and planning of community spaces for public recreation

2.3.4. Fee

Professional Fee/Expense Schedule

Our services are performed on a fixed fee basis. The fee and hourly rates for completing the State College Area School District Playground Master Planning and Design Services are noted below.

State College Area School District- Playground Master Planning and Design Services	Basic Fee	Project Mgr. \$110	Landscape Architect \$105	Support Staff \$50 - \$85	Total Hours
A. Project Initiation	\$3,695	13	9	22	44
B. Site Information and Analysis	\$3,450	12	18	4	34
C. Design Process	\$19,930	65	96	45	206
D. Design Cost Estimates	\$5,425	2	45	8	55
E. Final Products	\$6,820	38	16	16	70
Sub-Total Professional Fees	\$39,320	130	184	95	409
Expenses (copies, travel, plots, etc.)	\$2,600				
Total Project Fees (Professional Fees and Expenses)	\$41,920				
Additional Meeting with SCSD Board of School Directors, Administrative and Professional Staff, and/or Playground Task Force	\$1,0000	8	-	2	8
Additional "at large" Community Meeting	\$2,060	10	8	2	18

Additional Services – The following services will be billed as an additional service based on the rate schedule outlined above, upon request and authorization of the SCSD. No additional work will be undertaken without the authorization of the SCSD.

- Additional meetings beyond the meetings outlined in the RFP or stipulated in this proposal.
- Laminated mounted boards of the final playground master plan renderings for display and group presentations.
- Perspective sketches of proposed playgrounds.
- Consultation with SCSD representatives on specific playground equipment options, e.g. review of multiple playground catalogs to choose playground equipment for each school site.
- Outreach to playground manufacturer representatives regarding specific playground equipment to obtain catalog cuts, layout CAD drawings, and costs.
- Construction documents for playground improvements.

All expenses associated with this project will be billed at YSM’s cost, without a mark-up.

5. Project Understanding

This project is to complete Playground Master Planning and Design for 10 school sites in the State College Area School District. The 10 school sites include eight elementary schools and two middle schools.

The Playground Master Planning and Design project will assess the conditions and safety and accessibility compliance of the existing play areas and equipment, consider opportunities for equipment reuse, define a program for playground enhancements based on stakeholder and community input, develop master plan designs for each of the 10 playground, and develop probable construction cost estimates for the playground enhancements and phasing plans where appropriate.

We have visited the 10 school sites and seen that each playground is unique to the school and setting. Some of the play equipment appears to be relatively new while other sites have outdated equipment. Compliance with the Americans with Disabilities Act is successfully addressed at some sites and others have no accessible route to the play equipment area. Pavement games and/or graphics are included at some of the schools but are a missed opportunity at others.

YSM will develop creative designs for each school site that maximize the play potential and integrate the concepts of naturalized play areas and play-based learning to create play areas that inspire children's imagination and fosters learning through play.

Stakeholder Participation Process

Stakeholder and community participation is the foundation of our planning process for playground and park and school recreation master plans. Master plan goals are based upon consensus generated through stakeholder and community engagement. The public participation process will include three components:

- A. **Stakeholder Meetings**- Project stakeholders include the SCASD Board of School Directors (and subcommittees), SCASD Administrative and Professional Staff, and the SCASD Playground Task Force. These stakeholders will play a vital role in the master planning process, defining project goals, acting as a sounding board to direct our efforts, providing input, alerting us to issues and opportunities, and reviewing materials. The consultant team will meet with these stakeholders at least six times throughout the planning process.
- B. **Community Meetings** – Two “at-large” community meetings will be held to present playground master plan concepts and gather input and ideas from the community.
- C. **Key Person Interviews** - We will conduct key person interviews with key stakeholders that may not be on the stakeholder groups listed in A. above. We use the interviews to collect information, determine issues and opportunities, understand how the playgrounds are currently used, and define what works and what does not. Typical key person interviews include maintenance personnel, school resource officers, science teachers, physical education teachers, etc.

Scope of Work: Our Process

Our methods for undertaking the playground master plans for 10 school sites of the State College Area School District and the Program/Scope outlined in the RFP.

A. Project Initiation

YSM will:

1. Request survey information for each of the 10 playground sites. The survey information should show the existing or proposed (in the case of the schools under renovation/construction) playground area(s), areas of potential playground expansion, and area between the playground areas and the school. Survey information should include topography, built features, utilities, and building entrances.
2. Use the survey information to develop base maps for the 10 school sites.
3. Meet with the SCASD Stakeholders to kick-off the project, identify goals and objectives, and discuss the project schedule. Request examples of playgrounds that stakeholders are familiar with that generally achieve the goals for the 10 playgrounds as benchmark for research and consideration of the YSM Team. Base maps for each site will be provided and referenced to spur discussion of issues and opportunities.

B. Site Information and Analysis

YSM will:

1. Complete a desktop survey of existing information sources such as easements, soils surveys, and other information, which may be applicable to the planning process.
2. Investigate and analyze the 10 playground sites to consider:
 - a. Natural features such as slope, solar orientation, native and invasive vegetation, topography, soils, water resources, drainage patterns, etc.
 - b. Existing built features such as primary and secondary pedestrian access to the site from the school, vehicular access for maintenance, existing playground equipment and site amenities, utility locations, adjacent land use, and other features.
 - c. Site opportunities, concerns, and limitations.

Natural Playgrounds

It is important to offer children the opportunity to explore and be exposed to natural elements. Playgrounds that incorporate boulders, logs, and plantings stimulate children's imagination and encourages exploration of the natural world. Natural play benefits include:

- Native plants and natural elements enhance diversity of play through exploration, discovery and sensory stimulation.
- Natural plants enhance the aesthetic appeal of play areas.
- Incorporating both natural and traditional play elements expands the range of play and support physical, cognitive, and social activities.
- Engaging with nature and nature play is linked to reducing stress, ADHD, behavior problems, childhood obesity, and other maladies that affect children.
- Natural areas in playgrounds can illustrate green strategies to promote pollination, address stormwater runoff, and natural planting.



3. Conduct key person interviews and research.
4. Investigate and/or visit benchmark playgrounds.
5. Meet with the SCASD Stakeholders to review the findings of the site analysis, key person interviews, and research.

Play-Based Learning

Play-based learning steps away from the rigors of the forward-facing elementary school classroom with an emphasis on repetition and teaching to the test. Rather, play-based learning involves engaging students in activities that spur their imagination and their desire to explore and invent, while encouraging them to think freely, take risks, and discover new ideas. While play-based learning can happen in the classroom, the playground provides a wonderful pallet of opportunities for children to learn through play and grow in many important ways.

YSM has always adopted the tenants of play-based learning when designing our playgrounds. While there is play equipment designed to look like a fire truck or a pirate ship, you will never see this type of “theme” play equipment in our playgrounds. YSM’s designs don’t tell children how to play – rather we want to create interesting and creative environments where children’s imaginations let them go anywhere they desire. We introduce plantings and stepping stone to integrate nature, colorful safety surfacing with designs that can be interpreted in a variety of creative ways, and traditional play equipment that provides physical challenges and opportunities for building social skills.

We have considered the idea of incorporating loose elements (stone, sticks, log rounds, etc.) but have decided that public park settings without supervision are not appropriate – however, school playgrounds with teacher supervision may open the potential of incorporating loose elements for creative play.

YSM does develop playgrounds that are based on a theme – but the theme is used to integrate excitement into the design while leaving the interpretation of “play” up to children. An example is a “town square” theme. A sidewalk forms a figure-eight roadway with child—size building facades creating the town square. The buildings are different designs and children can use their imagination to determine their function – one might be a fire station, a school, house or whatever they image. Behind one of the facades is a circular seat wall. A teacher might use this area for story-time, while a child might use it as center ring of an imaginary circus or the castle wall. YSM designs creative playgrounds that encourage the imagination and free-play of children.



C. Design Process

YSM will:

1. Preliminary Playground Master Plans
 - a. Develop preliminary playground master plans for each of the 10 school sites. The preliminary playground master plans will illustrate and consider:

- Conceptual equipment layout that organizes the playground area(s) and provides adequate safety zones, use areas, and gathering areas.
 - Naturalized play areas for imaginative play with native plants and natural elements to enhance diversity of play.
 - Opportunities for environmental education and learning landscapes.
 - Opportunities for hardscape play: pavement games and graphics.
 - Compliance with the Americans with Disabilities Act (ADA). The accessible route between the school building and playground areas will be designed to meet the ADA.
 - Pedestrian desire lines (routes) to other facilities in the play area to avoid conflicts.
 - Sustainable site design principles, best management practices for stormwater and erosion control and innovative stormwater management solutions.
 - The relationship of the playground to the surrounding use areas, classrooms, and primary access route. Consider the impacts of noise, visual access, etc.
- b. Prepare concept design board(s) with images and catalog cuts of possible playground equipment, site amenities, gathering areas, etc. to illustrate concepts for the playgrounds.
- c. Meet with the SCASD Stakeholders to present the preliminary playground master plans and concept design boards. It is assumed that the review of the 10 school sites will take two meetings. Seek input on the preliminary master plans.
2. Pre-Final Playground Master Plans
- a. Incorporate input received from the meeting into the pre-final master plans for each school site. The pre-final playground master plans will be a graphic colored rendering of proposed improvements.
- b. Update the concept design board(s) to reflect the pre-final designs.
- c. Meet with the SCASD Stakeholders to review and discuss the pre-final master plan and review the probable construction cost opinion (see D. below) for proposed improvements.
- d. Hold the two community meetings at locations convenient to the “at-large” community. Present the pre-final playground master plans and facilitate discussion, questions, and input on the master plan designs and proposed playground elements.
3. Final Playground Master Plans
- a. Finalize the playground master plans for the 10 school sites based on input from the SCASD Stakeholder and community meetings.
- b. Meet with the SCASD Stakeholders to review the final playground master plans and the corresponding final construction cost opinions (see D. below).

D. Design Cost Estimates

YSM will:

1. Develop probable construction cost opinions for the proposed playground improvements at each of the 10 school sites based on the pre-final playground master plans. Cost opinions will include an allowance for playground equipment (based on the project discussions and spatial area allotted),

hardscape, landscaping, site amenities, stormwater management facilities, grading, design, and engineering costs.

2. Revise the preliminary probable construction cost opinions to reflect the final playground master plans.

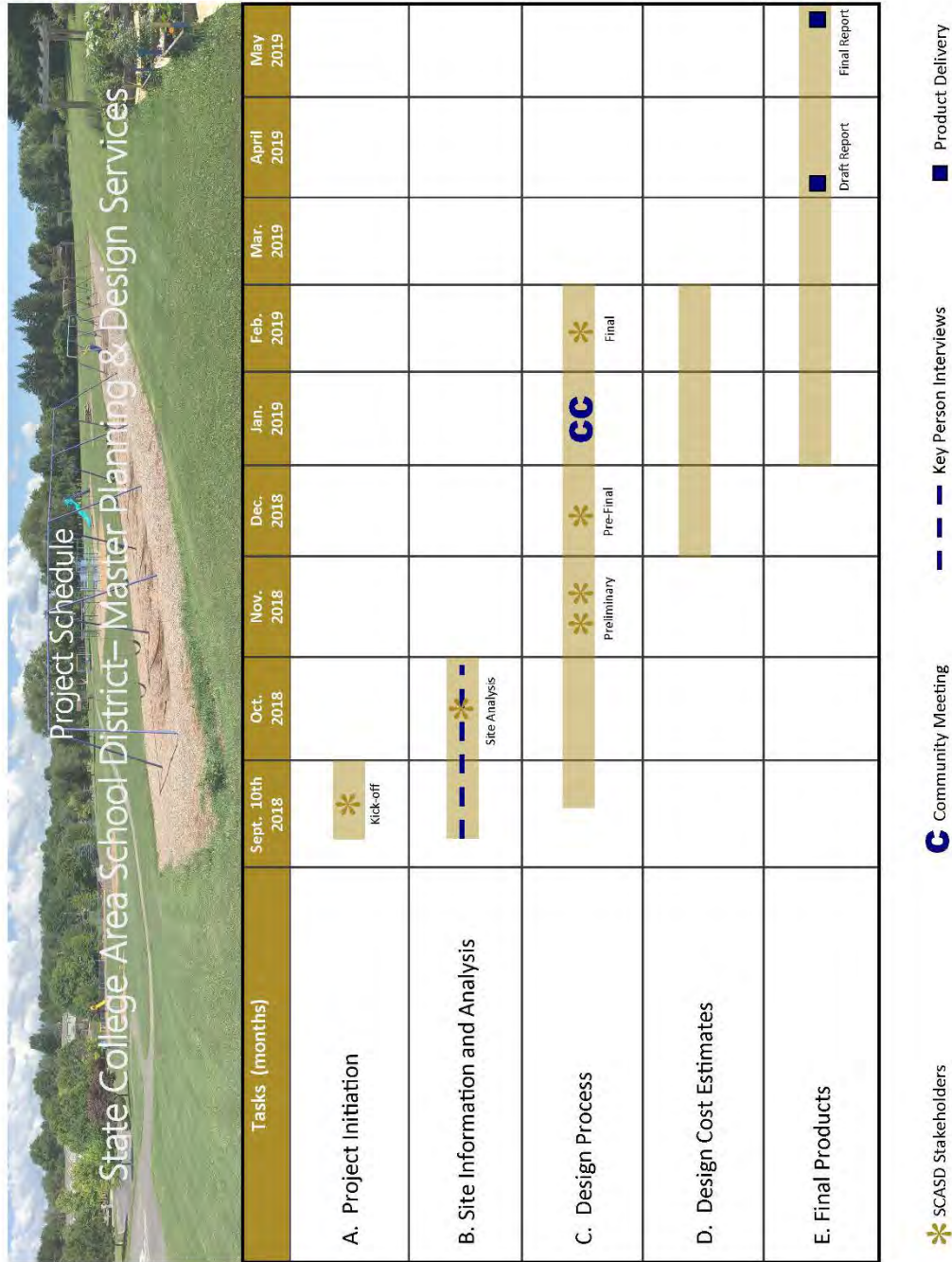
E. Final Products

YSM will:

1. Prepare a narrative report that briefly describes the project goals and objectives and the master planning process. Describe, in sufficient detail to capture the design intent, the final playground master plan for each of the school sites. Include 11"x17" drawings of the final playground master plans in the bound report. One hard copy and digital PDF versions of the draft report will be provided to the SCASD and five (5) hard copies of the final report will be provided.
2. Develop the final playground master plan drawings upon final approval by the SCASD. The final plans will be drawn to a scale color plan renderings.
3. Provide five (5) digital copies of the 10 final playground master plan drawings, report, and cost opinions on disc.

6. Project Timeline

YSM recommends a 10-month schedule for completing the State College Area School District Playground Master Planning and Design Services. The project timeline with projected timeframes for tasks and meetings is below.



7. YSM Team

YSM commits to State College Area School District a highly qualified team of professionals with proven expertise and extensive experience on similar projects. The YSM Team includes:

Ann Yost, RLA, Landscape Architect of YSM will serve as **Project Manager**. Ann has over 36 years of experience in park and recreation design projects. Ann is a trained facilitator, who will lead meetings with the Playground Task Force, representatives of State College School District, and the public and coordinate the project with the School District. Ann's emphasis on the project will be translating input from the SCSD stakeholders and the community into master plans for the 10 school sites that achieves the goals envisioned by State College Area School District.

Chuck Strodoski, RLA, Landscape Architect, of YSM will serve as the **Lead Landscape Architect** and will develop the school master plans, working closely with Ms. Yost and the Playground Task Force. Mr. Strodoski has over 30 years of landscape architecture and playground planning experience. He is a talented designer with extensive insights into recreation and playground planning issues and trends and experience developing construction documents for playground and park development. He will develop cost estimates for capital investments.

Ms. Yost and Mr. Strodoski work collaboratively on each project undertaken by YSM and will work closely together on the State College Area School District Playground Master Planning and Design Services, each bringing individual strengths and knowledge to the project. The percent responsibility for the final product is anticipated to be A. Yost at 32% and C. Strodoski at 45% and Support Staff (CADD Technician) at 22%. These percentages are based on the projected hours for the total project, as indicated on the fee schedule on page 3.

YSM Team resumes are provided on the next pages.

	<p data-bbox="1149 321 1432 401" style="text-align: right;"><u>Ann E. Yost, RLA</u> Landscape Architect</p> <p data-bbox="220 468 337 491">Education</p> <p data-bbox="456 468 1273 583">B.L.A., Landscape Architecture, 1982 and B.S. Environmental Studies, 1981 - State University of New York, College of Environmental Science & Forestry A.S., Landscape Design, Temple University, 1978 NC State University/Oglebay – Park Maintenance Management School, 2006-07</p> <p data-bbox="220 590 362 648">Professional Registration</p> <p data-bbox="456 617 735 640">RLA, PA 1984 - LA000783-E</p> <p data-bbox="220 680 378 739">Professional Presentations</p> <p data-bbox="456 680 1263 884">PRPS, 2017 - Park Master Plans PSATS/PRPS 2015 - Creating Successful Dog Parks DCNR 2009 Sustainable Landscapes Conference – Sustainable Parks PRPS/Urban Recreation Institute, 2007 – Skate Parks and Dog Parks PRPS, 2006 – Everything You Wanted to Know About Dog Parks & More PRPS, 2001 – Contract Management – Specifications, Bidding & Administration PRPS, 1997 – Basic Park Planning</p> <p data-bbox="220 879 375 968">Professional Associations/ Boards</p> <p data-bbox="456 919 1138 1062">ASLA - American Society of Landscape Architects PRPS - Pennsylvania Recreation and Park Society NRPA - National Recreation and Park Association Hopewell Township Planning Commission, Chairman, York County York County Rail Trail Authority Board</p> <p data-bbox="220 1068 350 1127">Relevant Experience</p> <ul data-bbox="456 1100 1432 1520" style="list-style-type: none"> • Over 35 years experience in both private and public practice landscape architecture. Over 27 years of park and recreation focused experience. • Tenure with a County Parks Department as a Landscape Architect I. • Projects include: park feasibility studies; comprehensive park, recreation, and open space plans; park master plans, trail and greenway studies, construction documentation, grant assistance, and bidding and construction phase services. • Project manager/landscape architect for: <ul style="list-style-type: none"> - Over 130 park master plan projects, including 13 county, resource-based parks. - Over 60 park development projects. - 17 trail and greenway planning projects. - Over 35 comprehensive park, recreation, and open space planning projects. • 2010 PA DCNR Green Park Award - Project manager for Harriet Wetherill Park Master Plan and Construction Documents, recipient of first annual award for sustainable park design. <p data-bbox="220 1583 362 1606">Publications</p> <ul data-bbox="456 1562 1414 1715" style="list-style-type: none"> • "Parks to the Rescue", PRPS Magazine, Winter Special Issue, 2016 • "Open Space Conservation in Challenging Times - Be Proactive and Be Ready", PRPS Magazine, Volume 42, No. 2, 2011. • "Development of Park and Recreation Facilities in the 1990's", Pennsylvanian, The Magazine of Local Governments, June 1993. <p data-bbox="220 1778 386 1801">Relevant Skills</p> <p data-bbox="456 1757 1382 1873">Park planning and design • sustainable site planning • playground design • public meeting facilitation • public engagement techniques • PA DCNR grants • ADA for public outdoor settings • playground safety guidelines • best management practices • construction documents • PA public bidding requirements • construction administration</p>
---	---



Chuck Strodoski, RLA
Landscape Architect

Education

B.S., Landscape Architecture, The Pennsylvania State University, 1988
PA / DCNR - Playground Design / Safety Workshop
Lancaster County Planning Commission – Master Planners Course
National Recreation and Park Association National Playground Safety Institute

Professional Registrations

RLA, PA 1993, LA001209-E
Certified Playground Safety Inspector 2002

Professional Presentations

PRPS, 2017 - Park Master Plans
PRPS, 2014 - Amphitheater Design and Planning

Professional Associations

ASLA - American Society of Landscape Architects
PRPS – Pennsylvania Recreation and Park Society

Relevant Experience

- Over 29 years experience in a variety of site development projects with a 23 year focus on park and recreation projects.
- Projects include: feasibility studies; master plans, trail and greenway studies, construction documentation, grant assistance, and bidding and construction phase services.
- Lead landscape architect for:
 - Over 80 park master plan projects, including 13 county, resource-based parks.
 - Over 60 park development projects.
 - 9 trail planning projects.
- Knowledgeable of Pennsylvania Academic Standards for Environment and Ecology and experience developing park designs to support nature center curriculum.
- 2014 Lehigh Valley Planning Commission Open Space Project Honoree - Lead landscape architect for Covered Bridge Park Master Plan in South Whitehall Township.
- 2010 PA DCNR Green Park Award - Lead landscape architect for Harriet Wetherill Park Master Plan, recipient of the first annual award for sustainable park design.
- 2007 ASLA Award - Lead landscape architect for the Saint Mary Street Park in Lewisburg, PA, received the Award of Merit for Design/Built by the Pennsylvania-Delaware Chapter of the ASLA.

Publications

"Amphitheaters", PRPS Magazine, 2005

Relevant Skills

Park planning and design • sustainable site planning • playground design • site grading and earthwork • construction detailing • graphic renderings and illustrations • PA DCNR grants • ADA for public outdoor settings • playground safety guidelines • best management practices • construction documents • PA public bidding requirements • construction administration.

8. YSM Experience

YSM Similar Projects

YSM has extensive experience developing design and construction documents for playground projects similar to the design intent for the 10 school site playgrounds outlined in this RFP. Below are examples of 5 similar projects with the information requested in the RFP. YSM' standard slip sheets for each project example are provided on the following page.

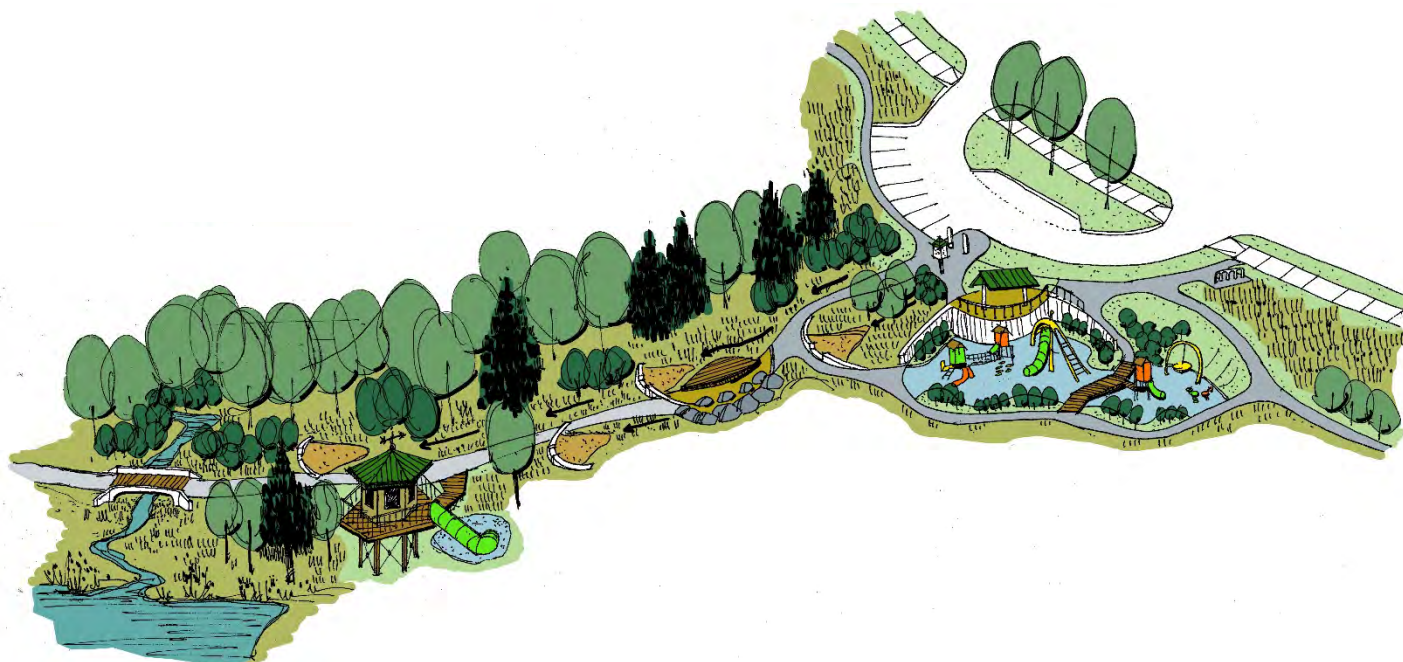
Gray's Woods Park Playground, Patton Township, Centre County, PA

Projects Scope: YSM developed the master plan for the 44-acre park located in the environmentally sensitive landscape of the Scotia Barrens. The park includes a natural playground that incorporates both natural and traditional play elements. YSM has recently completed construction documents for the playground which was funded by PA Department of Conservation and Natural Resources (DCNR). PA DCNR designated the playground one of its *2017 Nature Play Area Pilot Projects*. The playground will serve as a model for natural playground development.

Phase 1 Cost: \$714,918

Construction Year: 2018

Contact: Susan Wheeler, Public Works Project Manager, (814) 234-0271,
swheeler@twp.patton.pa.us





Landscape Architects



Gray's Woods Park

Project Summary:

Gray's Woods Park and adjacent State Game Lands are part of the environmentally significant area known as the Scotia Barrens. The Scotia Barrens is a unique habitat area of pitch pine-scrub oak which provides resources for a diverse variety of wildlife. The pitch pine-scrub oak wooded cover is interspersed with vernal pools and ponds providing habitat for sensitive and protected amphibians and insects and contributing to the groundwater supply of the region.

The Gray's Woods Park Master Plan proposes a neighborhood park that includes natural resource enhancements and reclamation of previously disturbed areas with native vegetation. Proposed improvements create a unique recreation setting that respects and protects the site's natural resources, addresses the interests of the neighborhood, and complements the existing township parks. The improvements promote and enhance environmental education; provide opportunities for passive, low-impact recreation; and enhance the site's natural resources and promote green sustainable development.

Project Data:

Site Acreage: 44 Acres
Completed: Master Plan, 2014
Playground Construction Documents, 2018



Project Team:

YSM, Landscape Architecture
Rettew Associates, Inc, Ecology and Environmental Science

Client Contact:

Susan Wheeler
Public Works Project Manager
Patton Township
(814) 234-0271

Patton Township, Centre County, Pennsylvania

Springettsbury Township Park Playground, Springettsbury Township, York County, PA

Projects Scope: The Springettsbury Township Park Playground replaced a community-built wooden playground structure that was extremely popular and serve the community and region for over two decades. The new playground design was developed through a design process that included input from residents at public meetings and children through a hands-on design exercise held in the former playground. YSM developed the playground design based on resident input. A castle theme was chosen to tie to the former playground structure. Landscaped areas, sitting, and picnic areas were incorporated into the design.

Playground Cost: \$787,000

Construction Year: 2017

Contact: Colin Lacey, Director of Parks & Recreation Department, (717) 505-0406,
Colin.Lacey@Springettsbury.com





Landscape Architects



Springettsbury Township Park Playground

Project Summary:

The master plan, completed in 1998, set the vision to renovate and unify an existing community park to create a recreation destination with amenities and features for the entire community. YSM was the prime consultant for the first two development phases and provided design, bidding and construction administration services. This third phase of construction replaced the park's only playground area.

The new playground built upon the previous "castle" theme. Circular stone seat walls and curbing were used to define use areas reflecting castle turrets. Colorful safety surfacing suggest water lapping against castle walls. Playground structures, pavement design and site amenities played on the medieval theme. A central seating area is developed with shade to allow caregivers to socialize with clear views to the large playground area. This vibrant playground offers imaginative play value for all ages and abilities.

Project Data:

Site Acreage: 48 Acres
 Completed:
 Master Plan, 1998
 Phase 1 & 2 Construction Docs 2001, 2005
 Playground Renovations, 2017



Project Team:

YSM, Landscape Architecture
 CS Davidson, Inc., Survey and Civil Engineering

Client Contact:

Colin Lacey, Director
 Parks and Recreation
 Springettsbury Township
 (717) 757-7856

Springettsbury Township, York County, Pennsylvania

Greene Township Municipal Park Playground, Greene Township, Franklin County, PA

Project Scope: Greene Township purchased a former building site adjacent to their existing municipal park site. The challenges were to accommodate a significant grade change in a very narrow areas and blend the new facilities with existing park features separated by a large parking area. YSM developed conceptual alternative designs for new park property to explore how the new area can be integrated into the existing park. Proposed improvements include an age segregated playground, central picnic shelter, adult fitness area and restroom building to serve the greater park area. The design used circular walls and planting areas to buffer the parking areas from the proposed playgrounds and redesigned the parking area to maintain vehicular access while keeping the pedestrian connections without crossing traffic. YSM completed phase 1 construction documents in 2015 and recently prepared Phase 2 construction documents for additional playground area and pedestrian connections. These improvements compliment the existing playgrounds and create a hub of activities for all ages and abilities.

Playground Cost: \$268,845 (excluding playground equipment purchased by Township)

Construction Years: 2017 and 2018

Contact: Travis Brookens, Township Supervisor, (717) 263-9160, tbrookens@greentwp.us





Greene Township Municipal Park

Project Summary:

Greene Township recently expanded their municipal park through the addition of an adjacent property. The majority of the new parcel was pavement, adjacent to the park's existing parking area. The goal was to blend the new land into the well-developed park and complement the existing park features. The design strategically removed pavement to connect the park green spaces and keep vehicular movements to the perimeter of the site, providing safe connections between the new and existing park features. The new area provides a central picnic pavilion, age segregated playground area, an outdoor fitness equipment area and restroom/locker room building. Retaining walls cradle the pavilion and provide large planting areas to buffer the surrounding drives and parking areas. A solar powered charging stations was added for convenience. YSM completed two phases of construction which developed all proposed facilities envisioned in the plan, with the exception of the restroom building which will be constructed by Township Staff.

Project Data:

Site Acreage: 1.3 Acres
 Completed: Concept Plan, 2016
 Construction Documents, Phase 1, June 2016
 Construction Documents, Phase 2, June 2018



Project Team:

YSM, Landscape Architecture

Client Contact:

Travis Brookens
 Supervisor
 Greene Township
 (717) 263-9160

Greene Township, Franklin County, Pennsylvania

Kutztown Park Playground, Kutztown Borough, Berks County, PA

Projects Scope: Kutztown Park had a traditional playground that was outdated. YSM developed a design to renovate the playground area and add new play equipment. The playground design was centered on a unique sandbox pavilion that had long been the centerpiece of the play area. A variety of natural play options were explored with the Borough Parks Committee and ultimately the play area was enhanced with plantings and stepping stones to bring color to the area and encourage children to interact with the natural elements of the setting.

Playground Cost: \$156,700

Construction Year: 2015

Contact: Gabriel Khalife, Borough Manager, (610) 683-6137, gkhalife@kutztown.org

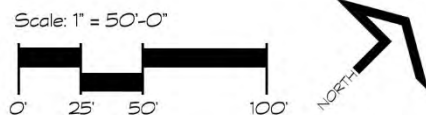
Kutztown Park Playground Improvements

Sketch Plan



Prepared for:
Kutztown Borough

Prepared By:
ysm
19 South Newberry Street
York, Pennsylvania 17403
(717) 852-0959 phone
(717) 852-9769 fax





Kutztown Park

Project Summary:

Kutztown Park is a treasured recreation destination with a mixture of historic structures and traditional sports facilities.

The unique features of an enclosed roller rink, Keith Haring Sculpture, and band shell offer recreation and cultural experiences rarely found in community parks. The master plan showcased these landmarks, updated/replaced outdated facilities, provided better circulation and cohesion among the different park activities, and addressed the need for additional parking. The master plan introduces facilities for more diverse age groups such as a teen hub area with a skate park, basketball, and in-line skate courts, and enhanced accessibility for seniors. A connections plan was developed to link Kutztown Park with the community pool and North Park.

Phase 1 improvements developed a new playground area, centered on the historic covered sand box pavilion, and constructed a new restroom building at the park hub.

Project Data:

Completed:
 Master Plan, 2009
 Phase 1 Construction Documents, 2013



Project Team:

YSM, Landscape Architecture
 Toole Recreation Planning, Rec. Planning

Client Contact:

Gabriel Khalife, Manager
 Kutztown Borough
 (610) 683-6131

Kutztown Borough, Berks County, Pennsylvania

Bernel Park Playground, Patton Township, Centre County, PA

Projects Scope: YSM developed a master plan for Bernel Park that included a themed playground. The park site was within the flight path of the local airport. The airport became the theme for the playground and the design and layout represent an airport with play equipment that resembles a control tower, directional wind sox, and a pavilion shaped like a hanger. The show cast from planes flying overhead became the ground plane graphic for the resilient safety surface in the playground.

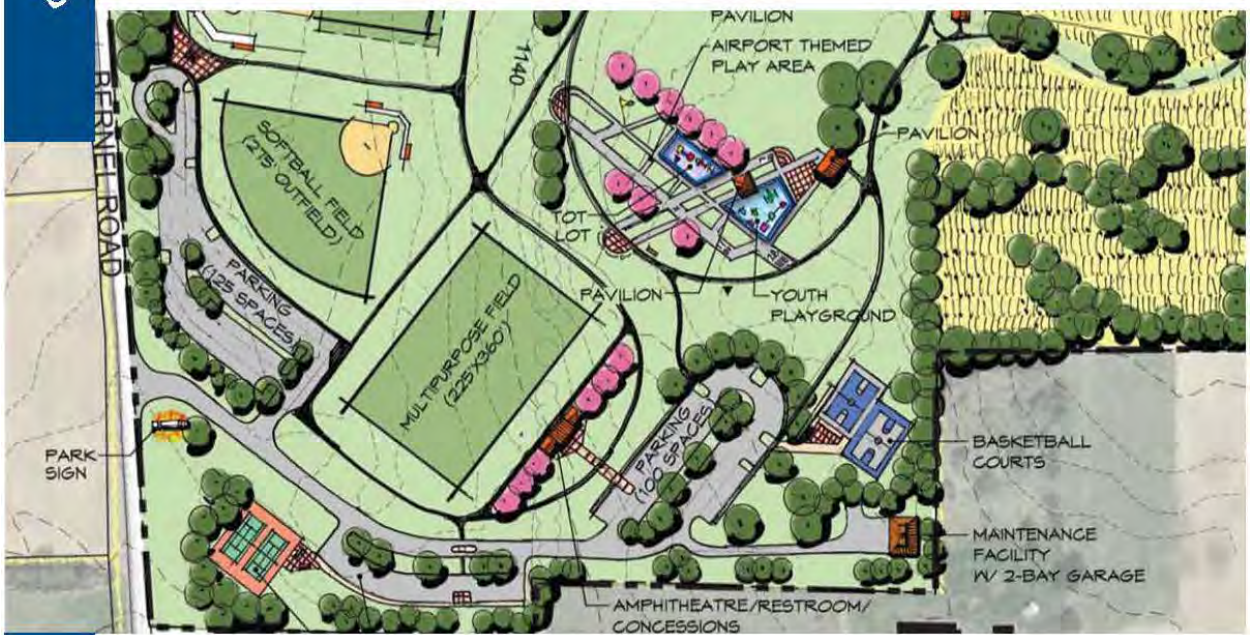
Estimated Phase 1 Cost: \$1,809,600

Planning Year: 2007

Contact: Susan Wheeler, Public Works Project Manager, (814) 234-0271,
swheeler@twp.patton.pa.us



ysm Landscape Architects



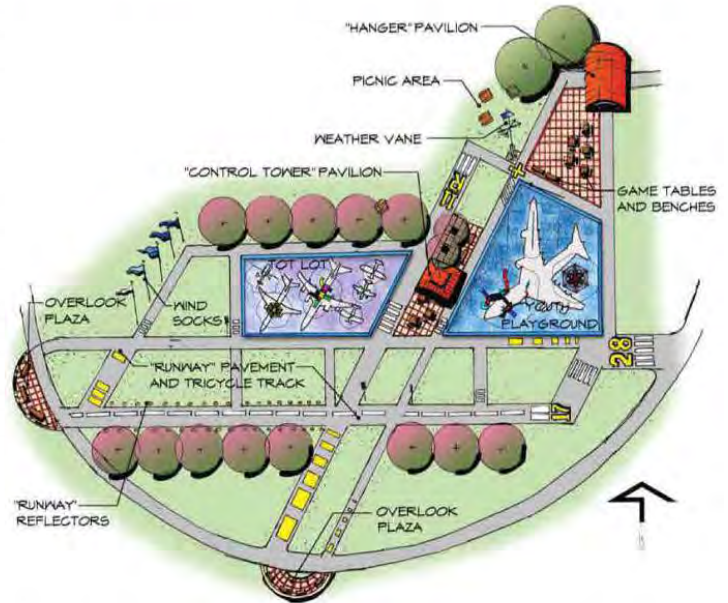
Bernel Road Park

Project Summary:

The design for Bernel Road Park creates a community park to serve the eastern portion of the municipality, offering a balance of active and passive recreation opportunities. Amenities target identified needs and the design responds to the natural characteristics of the site.

The passive portion of the site separates the active area from the adjacent residential neighborhood and encompasses areas of steep slope, sink holes, and rock out-crops.

A unique themed play area is designed complete with runways (walks), hanger (pavilion), and images of planes in the playground which relates to the University Park Airport less than a mile away.



Project Data:

Site Acreage: 65 Acres
 Completed: Master Plan, 2007

Project Team:

YSM, Landscape Architecture

Client Contact:

Susan Wheeler, Manager
 Patton Township Parks
 (814) 234-0271

Patton Township, Centre County, Pennsylvania

The following pages include YSM’s Firm Profile and additional examples that highlight YSM’s playground design and development experience.

ysm

Park and Recreation Services:

- Park and Recreation Feasibility Studies
- Park Master Planning
- Comprehensive Park, Recreation and Open Space Planning
- Park Construction
- Grant Funding Assistance
- Trail and Greenway Planning
- Playground Design

Landscape Architecture Services:

- Site Feasibility Studies
- Site Master Planning
- Land Development Plans
- Urban Design and Streetscape Plans
- Planting Design

Landscape Architects

19 South Newberry Street
 York, Pennsylvania 17401
 phone: (717) 812-9959
 fax: (717) 812-9769
 www.ysm-la.com

YSM is a landscape architecture firm specializing in park and recreation design and planning. Our philosophy is best summed up by our mission statement *“Dedicated to the design and planning of community spaces for public recreation”*. Our unique focus results in thoughtful, creative, cost-effective solutions which maximize the potential of each site to serve the community.

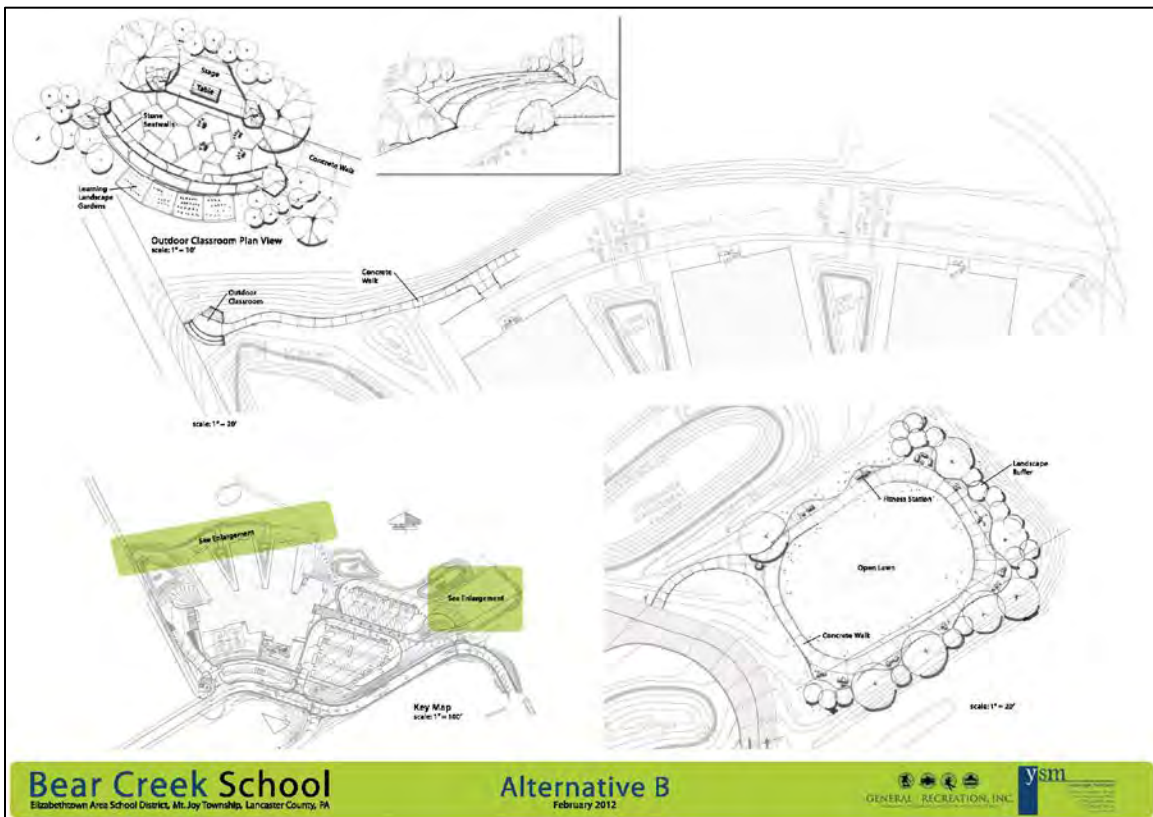
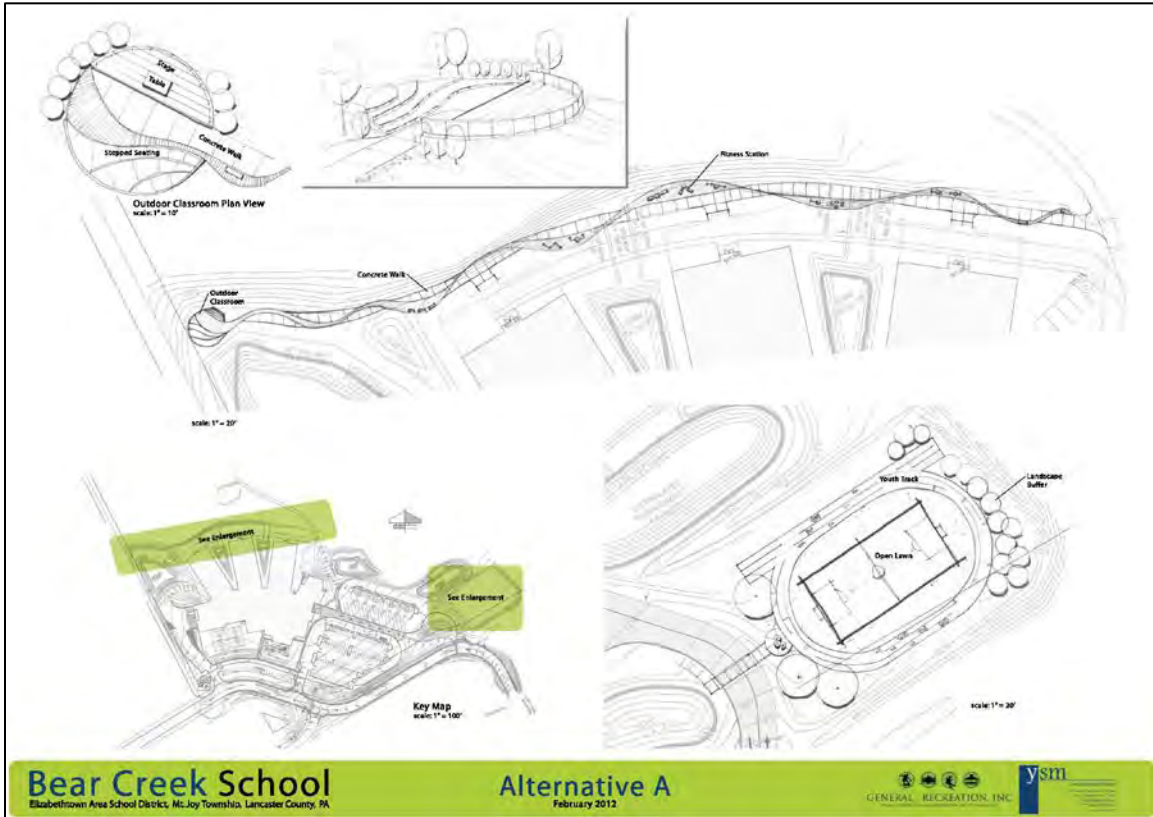
Each **YSM** project receives the collaborative insights of the principals as well as their practical, proven experience. Our commitment to context sensitive, stakeholder driven, designs provide creative solutions, tailored to each clients unique needs and circumstances.

YSM provides innovative park and recreation and landscape architectural design and planning services to municipalities, counties, non-profit organizations, private clients, and design professionals.



Dedicated to the design and planning of community spaces for public recreation

School Play Area Concept Plans for Elizabethtown Area School District





Landscape Architects



Cousler Park



North Hampton Municipal Park



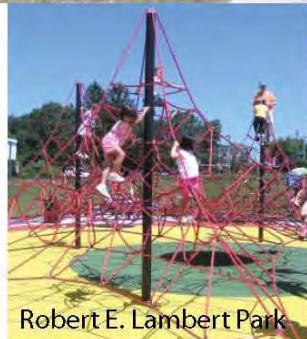
St. Mary Street Park



West Goshen Community Park

Playgrounds:

Playgrounds are popular park features and promote imaginative play, healthy exercise, and socialization for young children. YSM emphasizes playground designs that engage children and provide a safe, fun setting for play. Where appropriate, playgrounds are developed with themes that relate to the context of the site or region. Colorful safety surfacing is often incorporated as a dynamic element that expands play opportunities. Playground areas may integrate seat walls for viewing activities, tricycle tracks, small shelters to facilitate summer playground program activities, or other unique features to meet program and user needs.



Robert E. Lambert Park



Rapho Township Community Park



Martin Luther King Elementary School

Playgrounds

Project Photo Locations:

- Cousler Park:
 Manchester Township, York County, PA
- North Hampton Township Municipal Park:
 North Hampton Township, Bucks County, PA
- St. Mary Street Park:
 Lewisburg, Union County, PA

- West Goshen Community Park:
 West Goshen Township, Chester County, PA
- Robert E. Lambert Park:
 West Goshen Township, Chester County, PA

- Rapho Township Community Park:
 Rapho Township, Lancaster County, PA
- Martin Luther King Elementary School:
 City of Lancaster, Lancaster County, PA

Various Locations



Landscape Architects



Cedar Creek Parkway Playground

Project Summary:

The City of Allentown contracted with YSM to master plan the city's treasured Cedar Creek Parkway. The 109-acre park, located in the outskirts of the downtown area is a natural buffer to the high quality Cedar Creek which traverses the park.

The master plan guided a phase 1 improvement plan which renovated the Rose Garden area, added picnic facilities, and established a new destination playground.

Nestled within mature vegetation, the playground was strategically placed near the park's active hub. The playground is geared to accommodate children with special needs. The playground area is equipped with a new restroom and family changing room, and picnic pavilion fulfilling a need in the city's east side community.



Project Data:

Site Acreage: 109 Acres
 Completed: Master Plan, 2008
 Construction Documents, 2009

Project Team:

YSM, Landscape Architecture
 Paragon Engineering Services,
 Electrical Engineering
 LandStudies, Civil Engineering

Client Contact:

Greg Weitzel, Director
 Park, Recreation, and Trails
 City of Allentown
 (610) 437-7750

City of Allentown, Lehigh County, Pennsylvania



St. Mary Street Park

Project Summary:

The Lewisburg Area Recreation Authority teamed with international playground manufacturer, Playworld Systems Inc. to develop a "Park for all Ages" to serve the Lewisburg area residents. The park evolved through a cooperative effort to renovate an aging park into a state of the art facility with equipment and areas designed to accommodate all ages and abilities. The relatively small park area boasts a tremendous age segregated playground with designated play equipment areas serving 0-2 year olds, 2-5 year olds, and 6-12 year olds. A renovated basketball court, rock climbing boulders, and new modular skate park meets the needs of the youth and teenagers. A Life Station Trail, Playworld's new, innovative senior fitness circuit caters to seniors, while tennis courts, walking and nature trails, and newly renovated swimming pool serve all ages of the community. The park was designed as a showcase for Playworld to photograph and market worldwide.

Project Data:

Site Acreage: 8+ Acres
 Completed: Master Plan, 2004
 Phase 1 Construction Documents, 2005



Project Team:

YSM, Landscape Architecture
 Mid-Penn Engineering Corp., Civil Engineering

Client Contact:

Agela Zimmerman, Director
 Lewisburg Area
 Recreation Authority
 (570) 524-4774

Lewisburg Borough, Union County, Pennsylvania



Landscape Architects



Rapho Township Community Park

Project Summary:

This new community park was acquired through mandatory dedication and will be surrounded by a residential neighborhood in the future. The design targets the overall recreation needs of this growing community, providing traditional athletic fields and courts, a playground, and amphitheater for special events. Picnic pavilions are located throughout the park and a teen hub is created with a skate park, in-line rink, basketball courts and casual gathering area. The playground theme is agriculture to reflect the Township's rural character. Custom "silo" pavilions were incorporated in to the park and constructed by a local manufacturer.



Project Data:

Site Acreage: 30 Acres
Completed: Master Plan, 2003
Phase 1 Construction Documents, 2004
Phase 2 Construction Documents, 2007

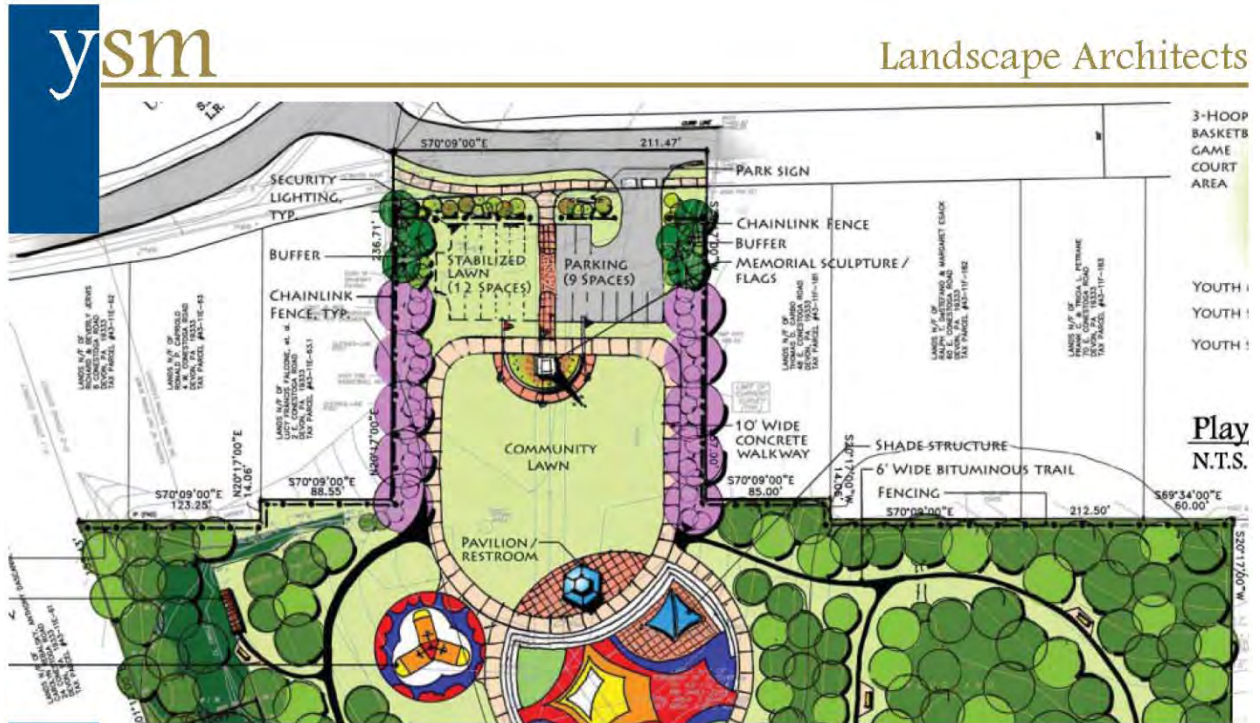
Project Team:

YSM, Landscape Architecture
Rettew Associates, Inc., Civil Engineering

Client Contact:

Sara Gibson, Manager
Rapho Township
(717) 665-3827

Rapho Township, Lancaster County, Pennsylvania



Project Summary:
 Westover Park is a 7-acre park located in a densely populated residential neighborhood along the Lancaster Avenue/Main Line corridor. The site's history became the theme for the park development. The site was home to the Pennsylvania Fireworks Display Company. In 1930, experimental gunpowder caused a tremendous explosion that killed several workers with repercussions from the blast felt as far away as Philadelphia and New Jersey. Since that time, the site has remained vacant and earned the name the Fireworks Tract. The design maintains a community lawn for informal recreation, anchored by a sculpture memorializing the fireworks factory. The park's main attraction, the playground area, focuses on the fireworks theme and uses bright colors in safety surfacing in an explosive array to portray the history and significance of the site. Trails explore the remaining natural area.

The park will serve as a neighborhood park and memorial to those lost by the explosion.

Project Data:
 Site Acreage: 7 Acres
 Completed: Master Plan, March 2006



Playground Detail

Not To Scale



Project Team:
 YSM, Landscape Architecture

Client Contact:
 Mimi Gleason, Manager
 Tredyffrin Township
 (610) 408-3623

Westover Park

Tredyffrin Township, Chester County, Pennsylvania



Landscape Architects



West Goshen Township Park

Project Summary:

This community park was designed to meet the active needs of the township residents, while providing spaces for community concerts and special events. Unique facilities include a playground area developed with a "village" concept that is "kid-size", amphitheater with terraced lawn seating, and a multi-purpose field that doubles as a stormwater management facility that can be flooded for ice skating in the winter. The park is extremely popular, especially with residents who walk the trails and enjoy the summer concert series.



Project Data:
Site Acreage: 26 Acres
Principals of YSM Completed:
Master Plan, 1993
Phase 1 thru Phase 4 Construction
Documents, 1994-1999

Project Team:
Rettew Associates, Inc. Landscape
Architecture*, Civil Engineering and Permitting,
Bidding and Construction Documentation.
** Note: Project was completed by principals of YSM while at
Rettew Associates*

Client Contact:
Kenneth Lehr, Director
Parks and Recreation
West Goshen Township
(610) 696-5266

West Goshen Township, Chester County, Pennsylvania