



**STATE COLLEGE AREA
SCHOOL DISTRICT**

ADMINISTRATIVE OFFICES

131 WEST NITTANY AVENUE • STATE COLLEGE • PENNSYLVANIA • 16801-4899
TELEPHONE: 814-231-1021 • FAX: 814-272-8790

To: Board of Directors

From: Robert O'Donnell, Ed Poprik, and Randy Brown

RE: District-Wide Facility Master Planning - Elementary Options (DWFMP-EO) Update

Date: June 3, 2016

The administration would like to provide an update to the Board regarding the DWFMP-EO process. The first of three community forums have been completed during the past two weeks. The final of the initial community forums will be held on June 16 at 7pm in the cafeteria of the Mount Nittany Middle School. This forum will provide a summary of the information gathered and a reflection of the lessons learned during the forums held to date.

The attendees at the initial forums provided beneficial feedback and plentiful sharing. The collation of the comments/feedback received to date is being completed. Once available, this information will be shared with the Board as well as placed on the DWFMP section of the district website.

The administration, design team, and the Facilities and Grounds Committee have assisted in the agenda planning for the upcoming forum.

In addition, the Facilities and Grounds Committee recommended the Board consider asking the CAC for Finance and Facilities for input to assist the Board in creating priorities for option selection and information needed to make decisions in the DWFMP process. The CAC's provided similar input during the high school master planning process.

The attached document includes proposed criteria which the Board may consider asking the CAC to evaluate for inclusion in this process. This criterion was suggested in the high school process by the CAC's. Since the high school process included a referendum, some of the criteria may not be relevant to the elementary process. This list will start as a baseline for discussion, which can be revised for future Board discussion.

The purpose of gathering input for priorities is to assist the Board in developing criteria for option selection and decision making.

Should the Board so desire, the suggested criteria may be amended and then forwarded to the CAC's for their input. This charge may be fulfilled at a joint meeting of the CAC for Finance and Facilities scheduled for June 9 at 4pm.

- Improve educational experience and outcome for students
 - Environment conducive to learning
 - Support educational specifications
 - Provide small group interactions and collaboration environments
 - Good acoustics
- Safety
 - Access points for students and non-students
 - Improve traffic flow and control
 - Provide secure outside spaces
 - Accommodate student walkers and bikers
 - Adequate space for parking
- Flexibility/Adaptability
 - Flexible facility use
 - Facility use beyond school day
 - Provide future expansion capability for buildings and site
 - Appropriate use of daylighting
 - Good control of temperature and air quality
- Long-term solution
- Reasonable cost to taxpayers
 - Minimize total project cost
 - Minimize long-term operational and maintenance costs
- Balance needs
 - Future educational needs
 - Improve educational experience
- One campus/building solution
- Operations cost evaluation
 - Efficient use of money
 - LEED - breakeven analysis
 - Quantify energy, staffing, transportation and other building costs
- Minimize impact on students during construction - transition period/phasing
- Minimize footprint of building (impervious area)
- Attractive facility with good aesthetics

State College Area School District



**STATE COLLEGE AREA
SCHOOL DISTRICT
DISTRICT WIDE FACILITY MASTER PLAN
UPDATE:
ELEMENTARY FOCUS**

June 6, 2016

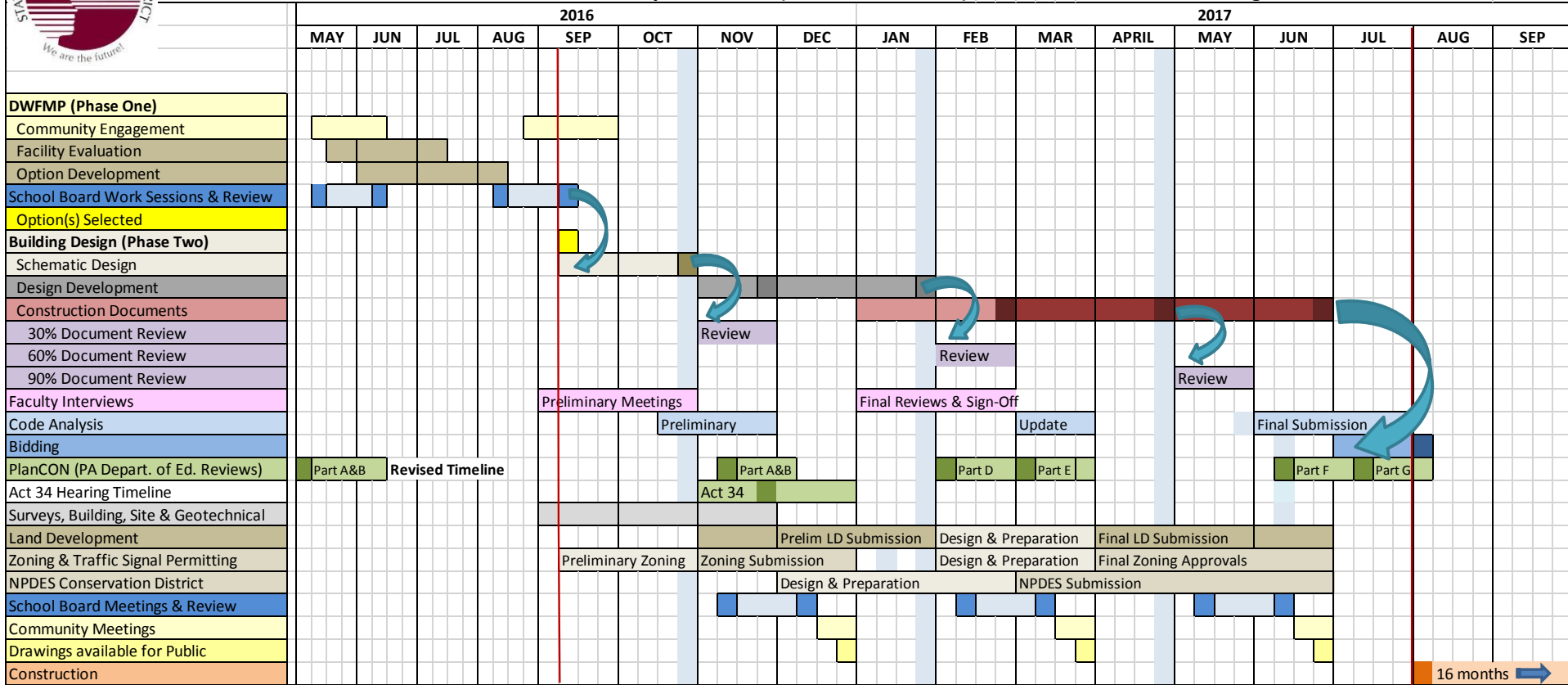
STATE COLLEGE AREA SCHOOL DISTRICT



PROPOSED DESIGN SCHEDULE- District Wide Facility Master Plan (Phase One and Two)

Crabtree, Rohrbaugh & Associates Architects

9-May-16



***Preliminary DWFMP Schedule to identify general approach, it is anticipated this schedule will evolve with the integration of the School Board, Administration, and Design Team.**

****PlanCON Part A&B has been moved up in schedule to accommodate PDE May 15, 2016 Moratorium Date.**



PROPOSED DESIGN SCHEDULE





DWFMP (Phase One)

		Community Engagement	Facility Evaluation	Option Dev.	School Board Review	Option(s) Selection
2016	May	May 25 Corl St May 31 Radio Park				
	Jun	June 1 Houserville June 16 MNMS				
	Jul	Week of the 18th				
	Aug	Week of the 15th				
	Sep	Board Meetings: Sept. 12 & 26 Forum: Sept. 19				
	Oct					
	Nov					
	Dec					
2017	Jan					
	Feb					
	Mar					
	Apr					
	May					
	Jun					
	Jul					

Scheduled developed by Crabtree, Rohrbaugh Associates Architects and SCASD Administration Schedule will evolve with integration of School Board, Administration, and Design Team.

Potential Criteria for Decision Making

Improve educational experience and outcome for students

- Environment conducive to learning
- Support educational specifications
- Provide small group interactions and collaboration environments
- Good acoustics

Safety

- Access points for students and non-students
- Improve traffic flow and control
- Provide secure outside spaces
- Accommodate student walkers and bikers
- Adequate space for parking

Potential Criteria for Decision Making (cont'd)

Flexibility/Adaptability

- Flexible facility use
- Facility use beyond school day
- Provide future expansion capability for buildings and site
- Appropriate use of daylighting
- Good control of temperature and air quality

Long-term solution

Reasonable cost to taxpayers

- Minimize total project cost
- Minimize long-term operational and maintenance costs

Balance needs

- Future educational needs
- Improve educational experience

Potential Criteria for Decision Making (cont'd)

One campus/building solution

Operations cost evaluation

- Efficient use of money
- LEED - breakeven analysis
- Quantify energy, staffing, transportation and other building costs

Minimize impact on students during construction - transition period/phasing

Minimize footprint of building (impervious area)

Attractive facility with good aesthetics



COMMUNITY MEETINGS

- June 16 – Mount Nittany Middle School 7:00 p.m.
 - Recap of May 31 to June 1 meetings
- July 18 – Location TBA
- August 15 - Location TBA
- September 19 - Location TBA

■ Questions

State College Area School District

