

State College Area School District



STATE COLLEGE AREA
SCHOOL DISTRICT
DISTRICT WIDE FACILITY MASTER PLAN
UPDATE:
ELEMENTARY FOCUS

October 17, 2016

Community Forum

- Provide Community Update – DWFMP
 - Reviewed District Facility Capacity
 - Projected Future Enrollment
 - Considered Community Input
- Preparing for Project Selection

Purpose of Forum

- Retain Radio Park and Corl Street
 - Combine Lemont with Houserville
 - Proposed schools with 400 to 550 students
 - Corl Street – renovation/addition due to site constraints
-

Board Actions to date

- Houserville and Radio Park – renovation/addition or new construction
 - Recommended building size – 3 classrooms deep (414 students)
 - Possible add alternate to Radio Park – 4th classroom deep
-

Upcoming Board Action

- Comparable Buildings and Programs
 - Sustainability and Energy Efficiency
 - Program Flexibility
 - Attendance Boundary Stability
-

Project Goals

- Maintain schools close to student residences
 - Expend resources within our financial means
 - Build appropriate district capacity
-

Factors for Capacity Decision

- DCED Grant
- PlanCon reimbursement from PDE

- Means \$6 to \$8 million in state resources to fund projects
 - Decreased tax impact on local taxpayers

Accelerated DWFMP Timeline: Why?



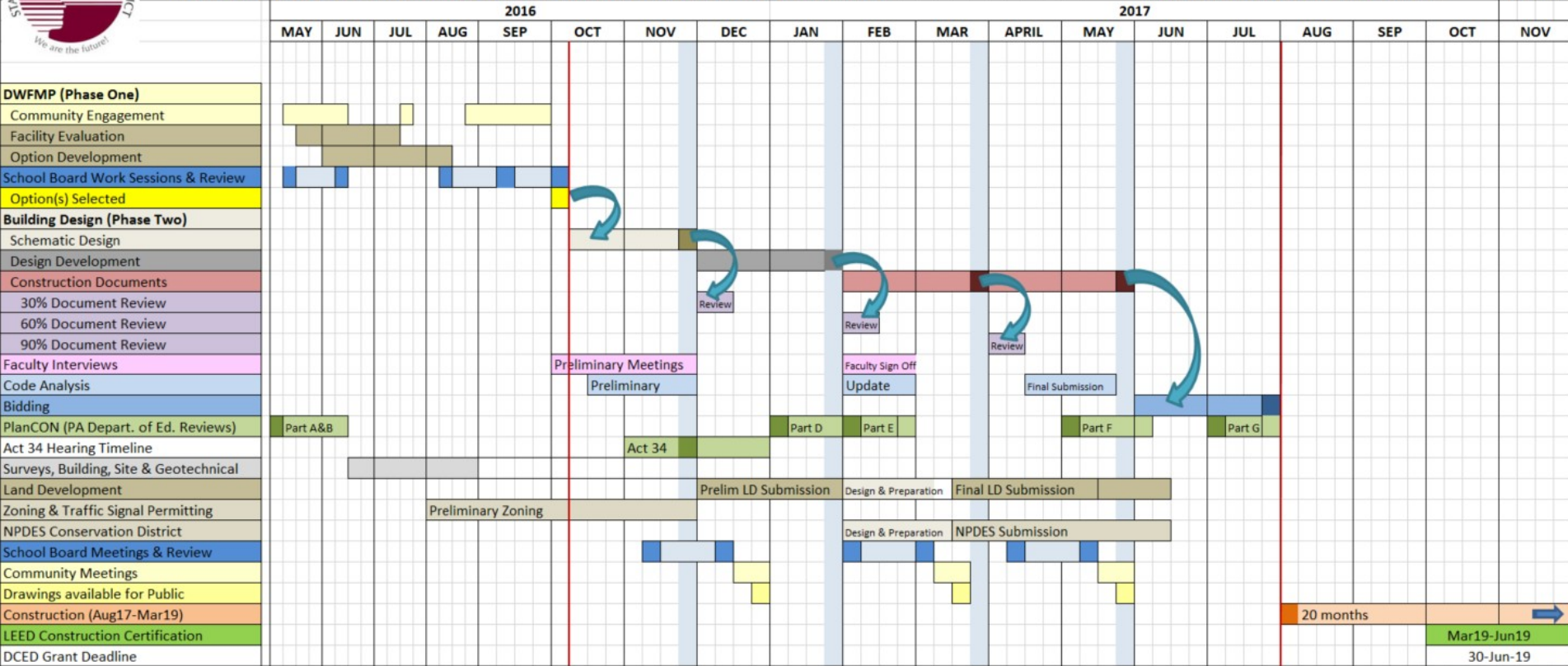
STATE COLLEGE AREA SCHOOL DISTRICT

PROPOSED DESIGN SCHEDULE- District Wide Facility Master Plan (Phase One and Two)

Crabtree, Rohrbaugh & Associates Architects



10-Oct-16



Timeline

- December 2016
 - Complete schematic design
 - Enter design development
- August/September 2017
 - Bidding
- Fall 2017 - Spring 2019
 - Construction

Timeline

Actual 15-16	16-17	17-18	18-19	19-20	20-21	21-22	22-23	23-24	24-25	25-26
2894	2918	2998	3050	3144	3189	3203	3219	3206	3191	3166

Note - Projected Increase: 340 students

SCASD Elementary Student Enrollment Projections

2016 Demographic Update - Conservative Model

Actual 15-16	16-17	17-18	18-19	19-20	20-21	21-22	22-23	23-24	24-25	25-26
2894	2978	3110	3226	3378	3470	3508	3516	3502	3481	3449

Note - Projected Increase: 640 students

SCASD Elementary Student Enrollment Projections

2016 Demographic Update - Moderate Model

	Current	Proposed
Corl St	276	414
Easterly Parkway	414	414
Ferguson	414	414
Gray's Woods	483	483
Houserville/Lemont	414	414
Mt. Nittany	414	414
Park Forest	529	529
Radio Park	414	414
Total	3,358	3,496

Capacity

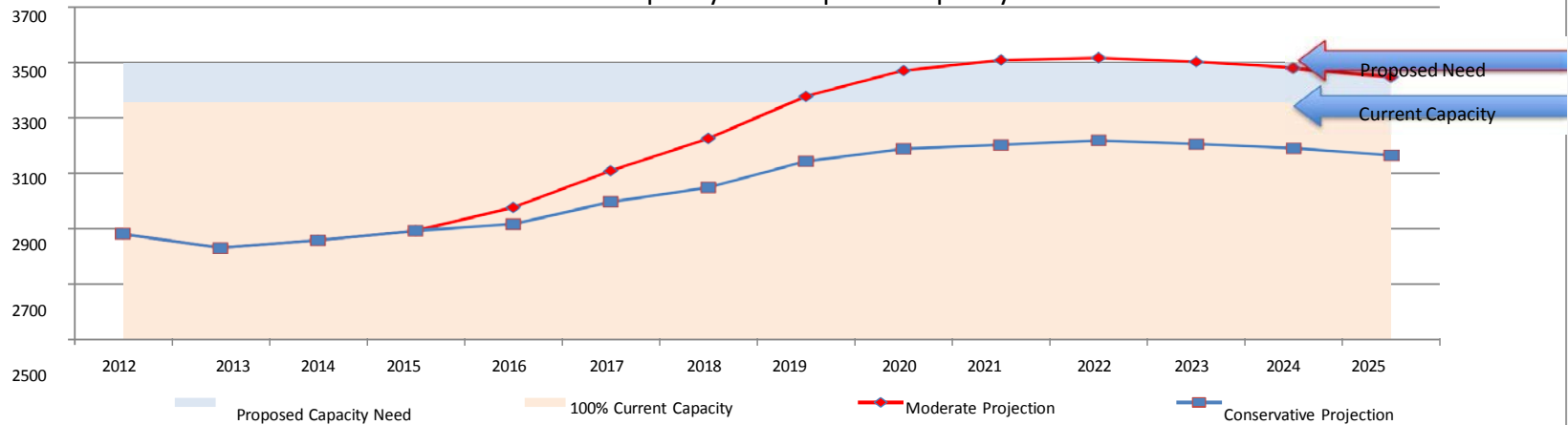
Houserville/Lemont Combined

- Rationale

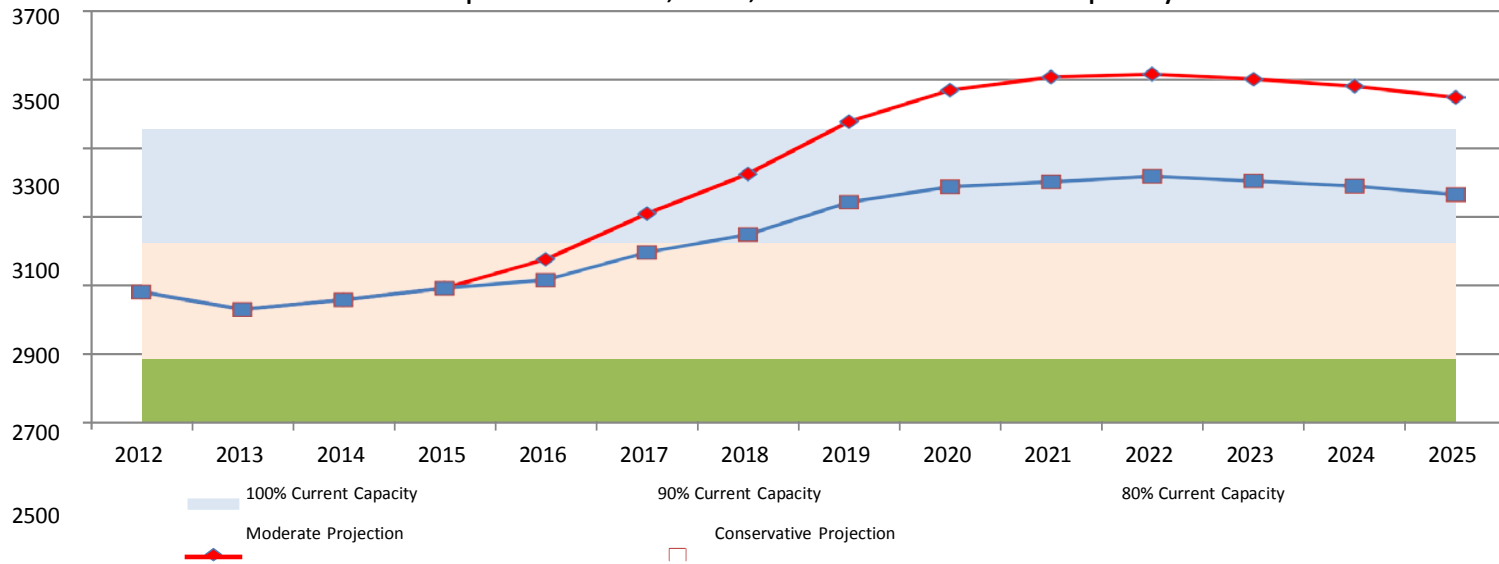
- Increase capacity for proposed student growth
- Maintain consistent building size
- Accommodate Hearts program relocation from Fairmount Bldg.

Proposed Capacity

Schedule 1 Conservative and Moderate Enrollment Projections compared to Current Capacity and Proposed Capacity Need

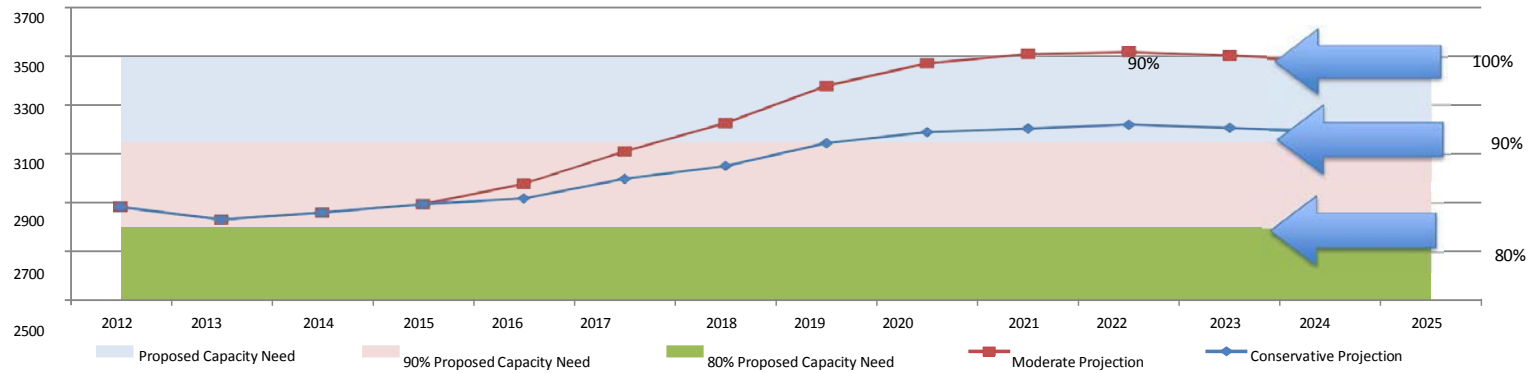


Schedule 2 Conservative and Moderate Enrollment Projections compared to 80%, 90%, and 100% Current Capacity

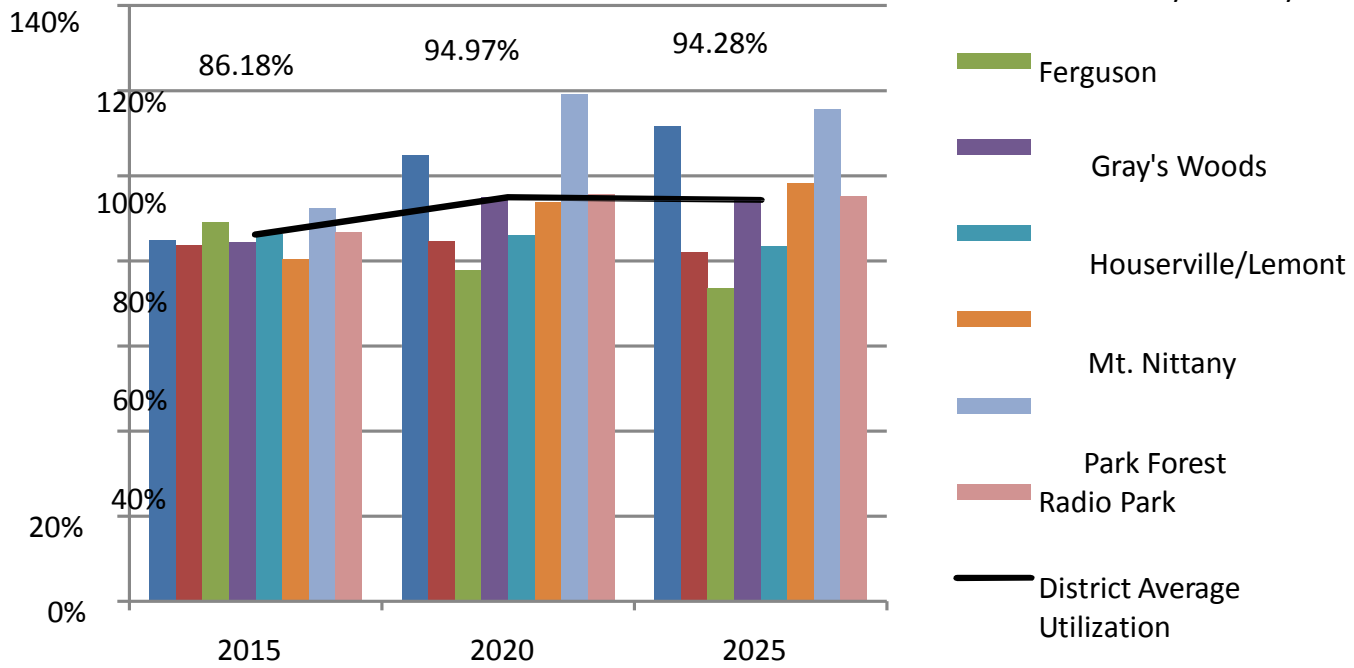


Attachment 4 - 2

Schedule 3
 Conservative and Moderate Enrollment Projections compared to
 80%, 90%, and 100% Proposed Capacity Need

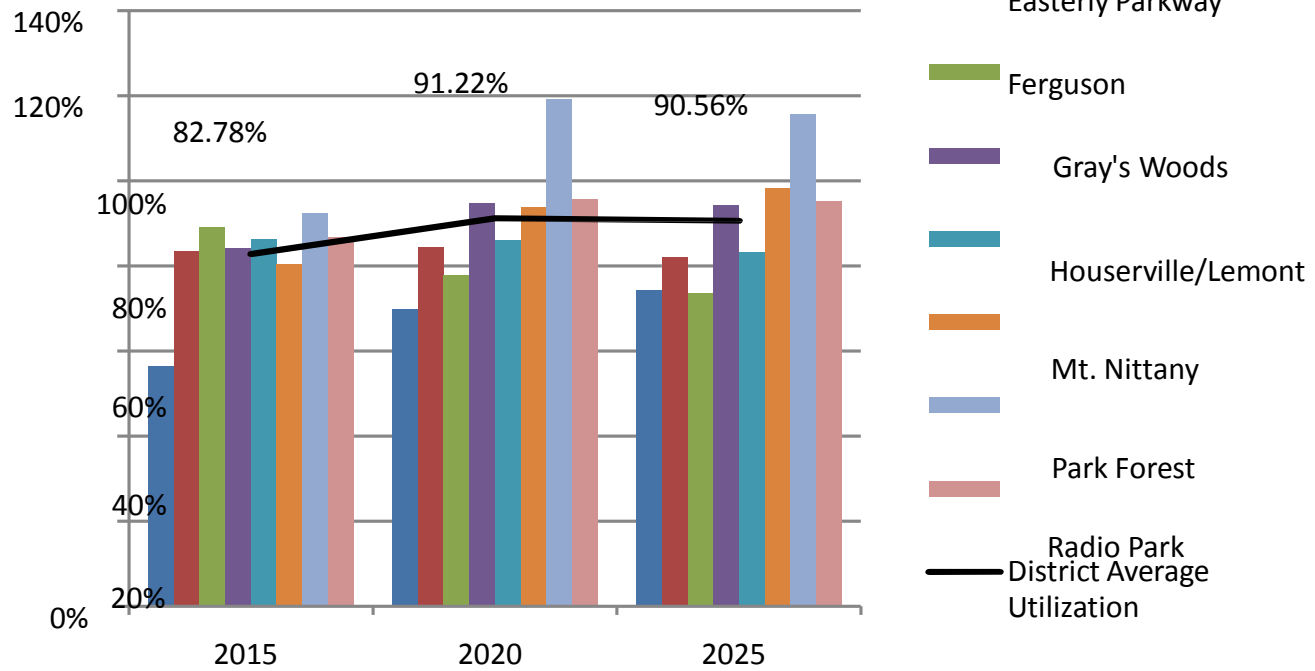


Schedule 4 Conservative Enrollment Projections compared to Current Capacity



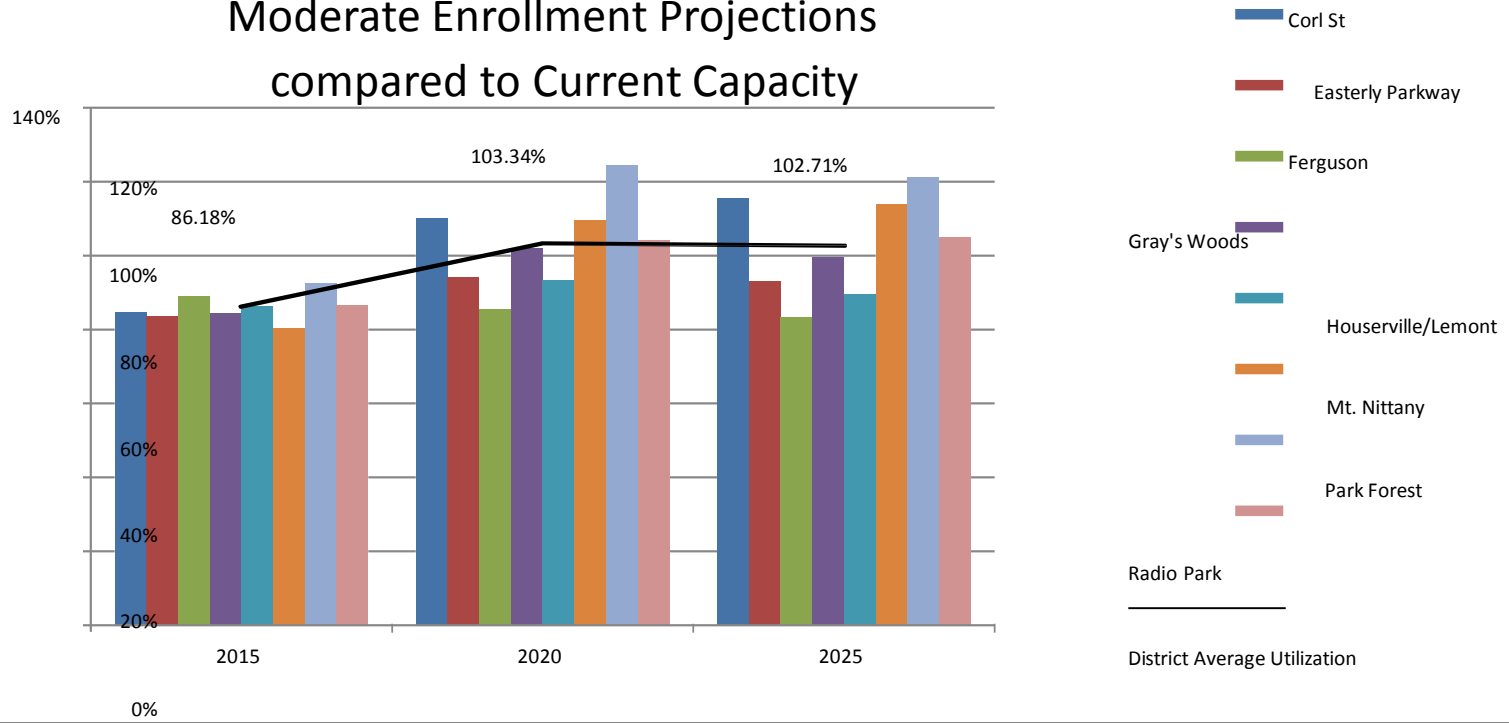
Attachment 4 - 4

Schedule 5
 Conservative Enrollment Projections
 compared to Proposed Capacity

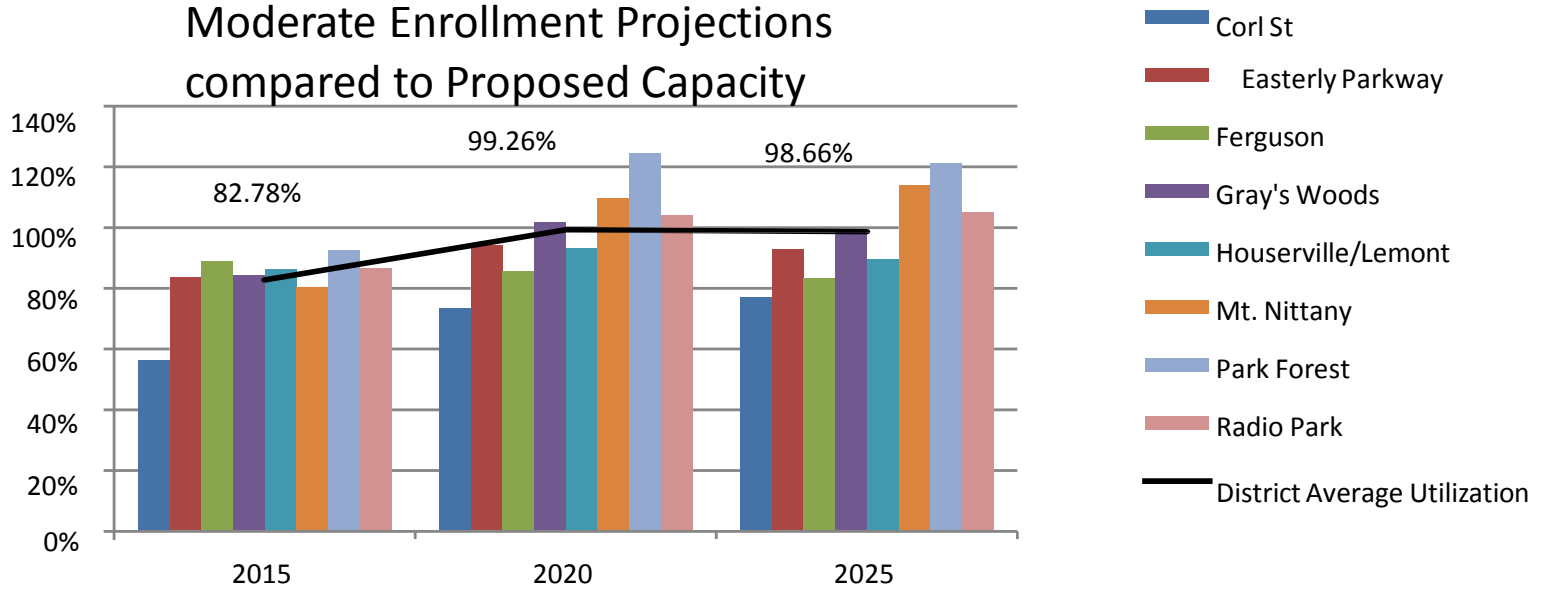


Attachment 4 - 5

Schedule 6 Moderate Enrollment Projections compared to Current Capacity



Schedule 7 Moderate Enrollment Projections compared to Proposed Capacity

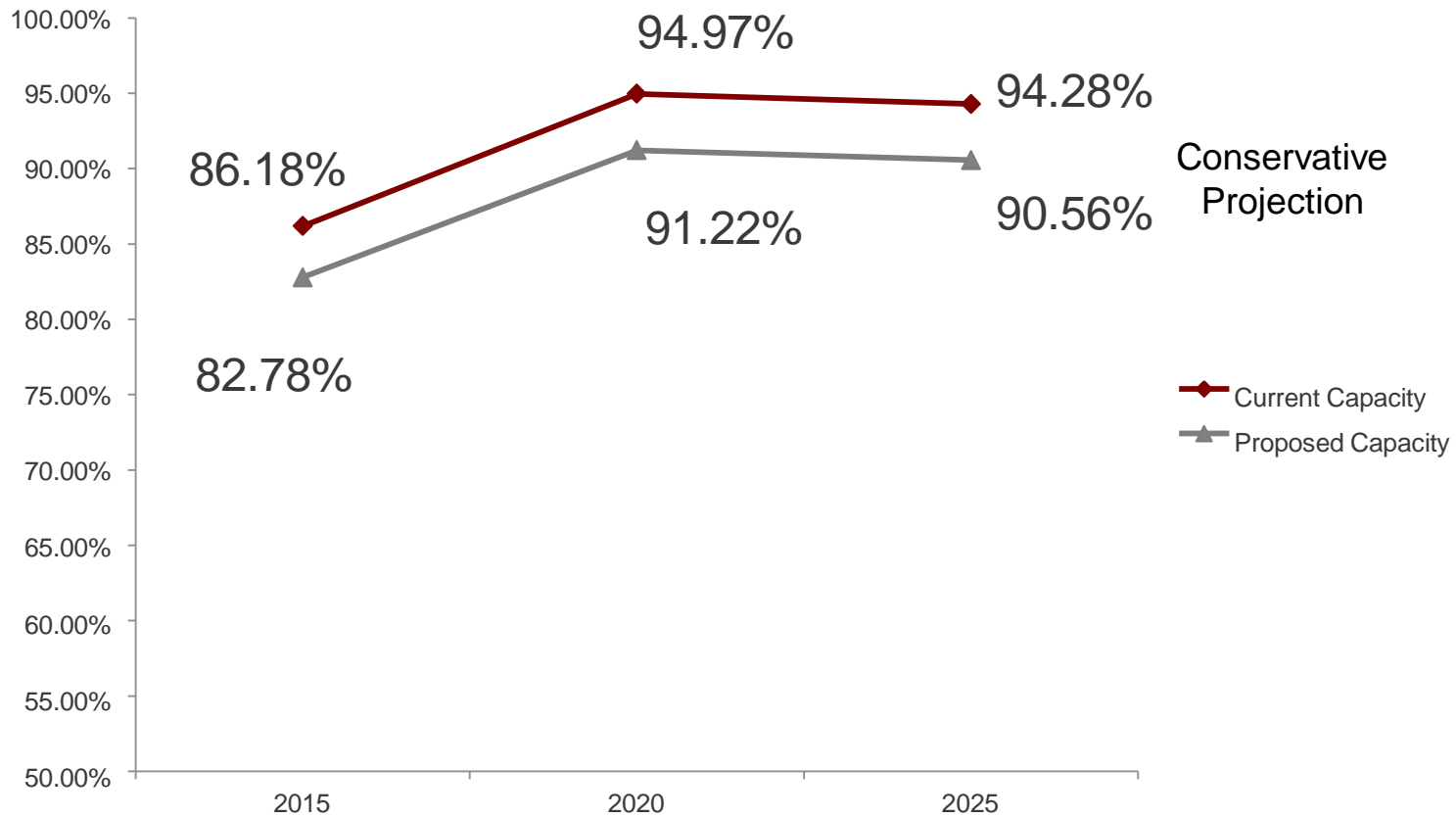


- Based upon size and number of our schools
 - 80 and 90%

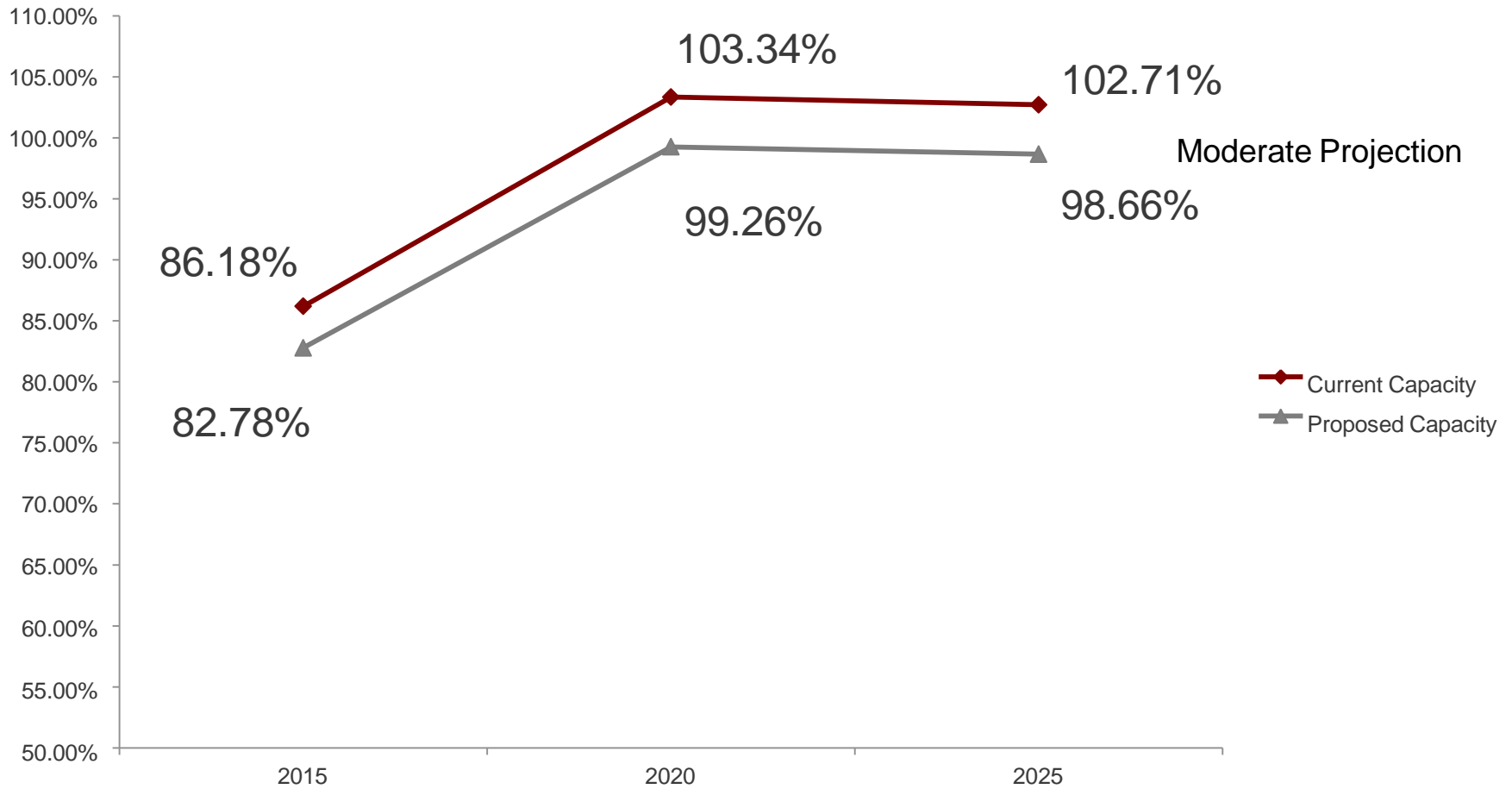
Note: Utilization = enrollment / capacity

**Recommended
Utilization**

- Does recommended capacity provide adequate space for new students?



Conservative Projection vs. Capacity



Moderate Projection vs. Capacity

- Increased capacity recommended to accommodate conservative enrollment projections.
- If enrollment follows moderate projection, District will have opportunity to expand capacity at Radio Park.
 - 4th classroom depth included in schematic design

Recommendation

Administrative Recommendation – 9/26/2016

	Radio Park	Houserville	Corl Street	Lemont
Option 1	Addition/Renovation	Addition/Renovation	Addition/Renovation	Repurpose
Option 2	Addition/Renovation	Addition/Renovation	Repurpose	Repurpose
Option 3	New Construction	New Construction	Addition/Renovation	Repurpose
Option 4	New Construction	New Construction	Repurpose	Repurpose
Option 5	Addition/Renovation	New Construction	Addition/Renovation	Repurpose
Option 6	Addition/Renovation	New Construction	Repurpose	Repurpose
Option 7	New Construction	Addition/Renovation	Addition/Renovation	Repurpose
Option 8	New Construction	Addition/Renovation	Repurpose	Repurpose

Administration Recommendation – 10/10/2016

	Radio Park	Houserville	Corl Street	Lemont
Option 1	Addition/Renovation	Addition/Renovation	Addition/Renovation	Repurpose
Option 3	New Construction	New Construction	Addition/Renovation	Repurpose
Option 5	Addition/Renovation	New Construction	Addition/Renovation	Repurpose
Option 7	New Construction	Addition/Renovation	Addition/Renovation	Repurpose

State College Area School District







