

State College Area School District  
Office of Physical Plant  
Ed Poprik, Director

To: Board of School Directors  
From: Ed Poprik  
RE: **Elementary Projects Update**  
Date: January 9, 2017

Based on the continued work of the project team, a PowerPoint presentation containing updated site and floor plans for the Houserville, Corl St., and Radio Park projects is attached. (The meeting presentation will focus on the site plans; however, floor plans are included for reference and any questions).

The most notable changes are with the Houserville project. Based on feedback during the initial review process, the location for the Houserville building was moved on the site. The new location positions the building on a higher elevation that is closer to the main entry point. (The floor plan for the building remains very similar to the original draft.) With this new location, a portion of the building comprised of roughly 4 classrooms will need to be removed during the initial construction phase. The team is working on complete phasing details; however, based on initial review with administration, it is believed that this loss of building space can be accommodated within the existing building footprint. Additionally, the prospect of utilizing Lemont to accommodate some classes from Houserville is being reviewed.

Some changes have been made to the Radio Park site plan regarding the size and configuration of the bus compound. Research and evaluation continues of alternate spaces for temporary and/or permanent relocation of the transportation facility. You have already received an estimate in excess of \$2 million to develop a permanent transportation facility. A temporary facility during the construction period may be required for the parking of at least a portion of the transportation equipment. The team continues to ensure the site plan will accommodate the building, play space, fields, and parking required, with or without the transportation center located at this site. An

optimal building project is the primary focus. If some reason the project is comprised due to colocation of the bus compound and the school the team will apprise the Board and make appropriate recommendations.

When the Boalsburg and Panorama Village schools were combined, a new name was chosen for the new building (Mount Nittany Elementary). It seems as though the combination of Houserville and Lemont would warrant the same consideration. Feedback is needed regarding any desire to begin this process.

Forums to review these plans are scheduled as follows:

- January 10: Corl St.
- January 17: Radio Park
- January 24: Houserville

Each of these forums will be held in the respective all purpose rooms, beginning with an introductory presentation. The large group will then be broken into smaller groups for table discussions where large format site and floor plans will be discussed with a facilitator. As with previous forums, the evening would conclude with opportunities for public comment.

A Board work session is planned for February 6 to include a detailed review of the 30% documents along with a review of the feedback received at the forums. Approval of the 30% documents is planned for February 13.



# SCASD DISTRICT-WIDE FACILITIES MASTER PLAN - ELEMENTARY SCHOOL UPDATE

School Board Meeting Update, January 9, 2017



## ARCHITECTS



**Crabtree, Rohrbaugh & Associates Architects**  
401 East Winding Hill Road  
Mechanicsburg, Pennsylvania 17055  
phone: (717) 458-0272 - fax: (717) 458-0047

## MEP ENGINEERS



**MOORE ENGINEERING COMPANY**

## CM SERVICES



**Massaro**  
CM SERVICES, LLC

## CIVIL ENGINEERS





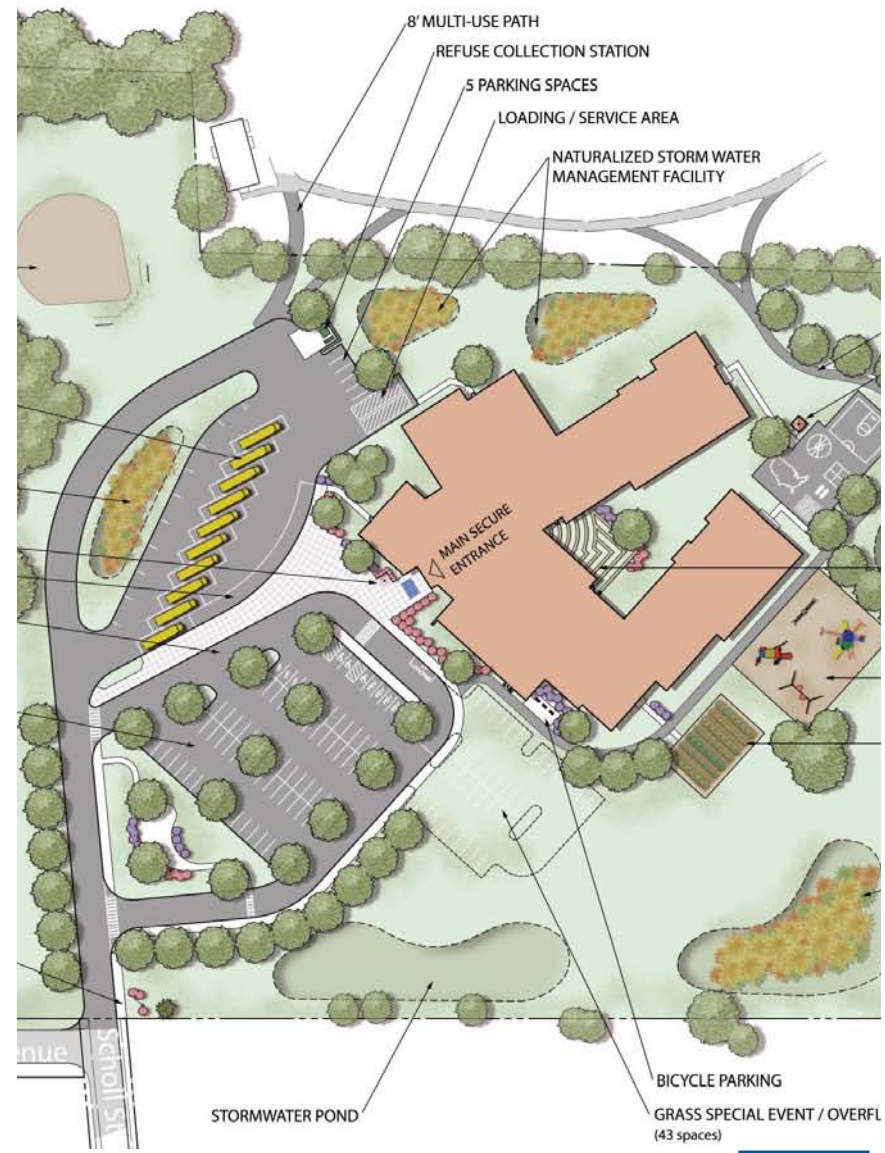
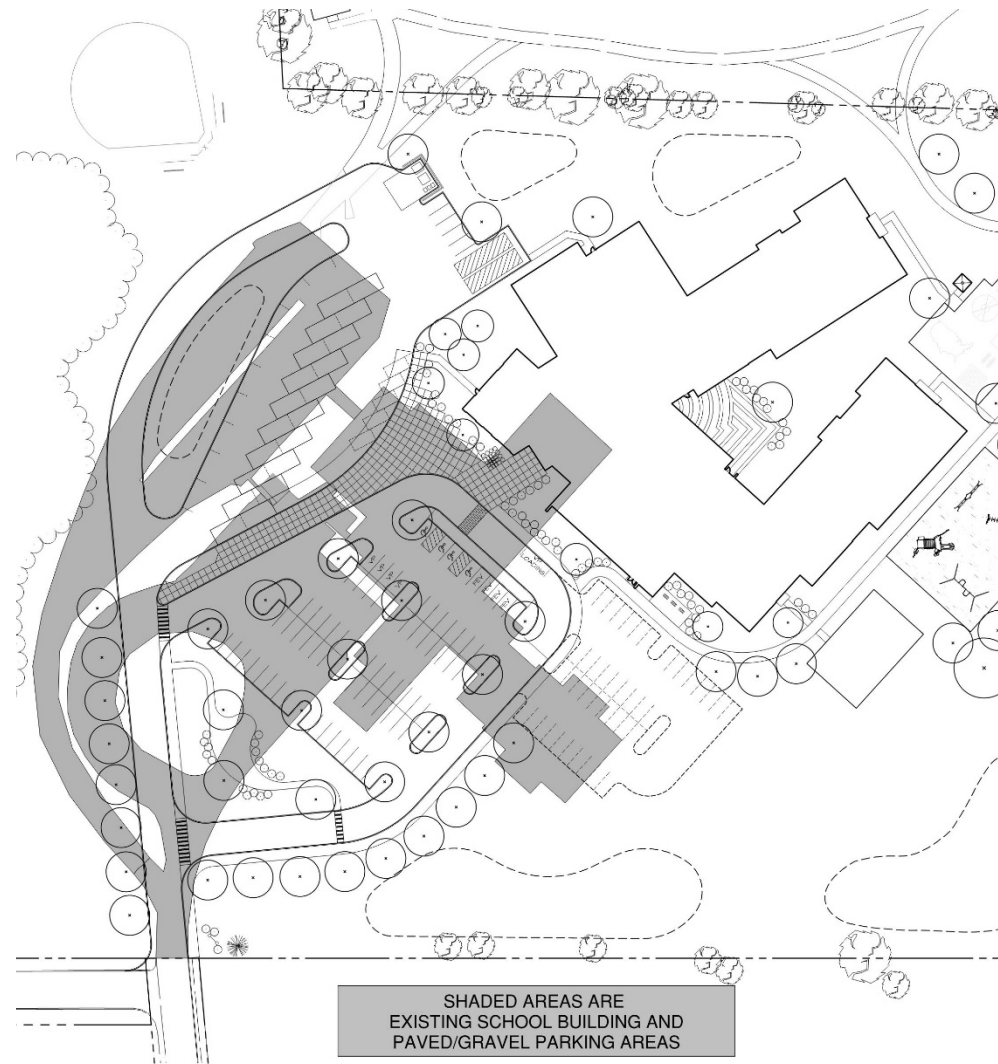


CR

# 1.2 Radio Park Elementary School- Site Plan





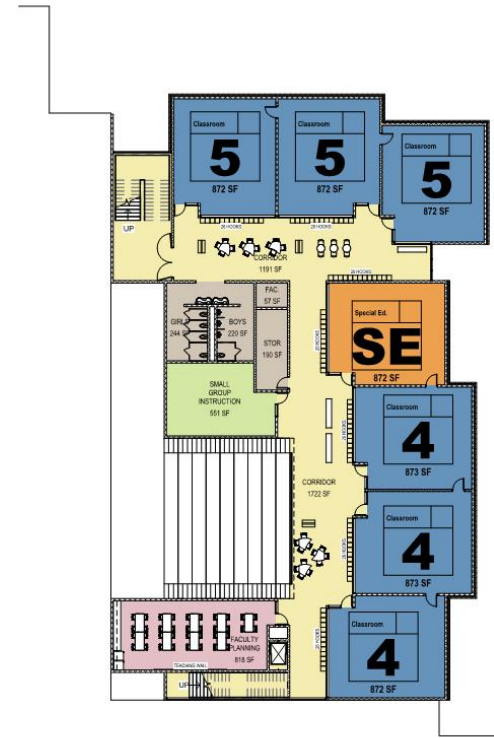




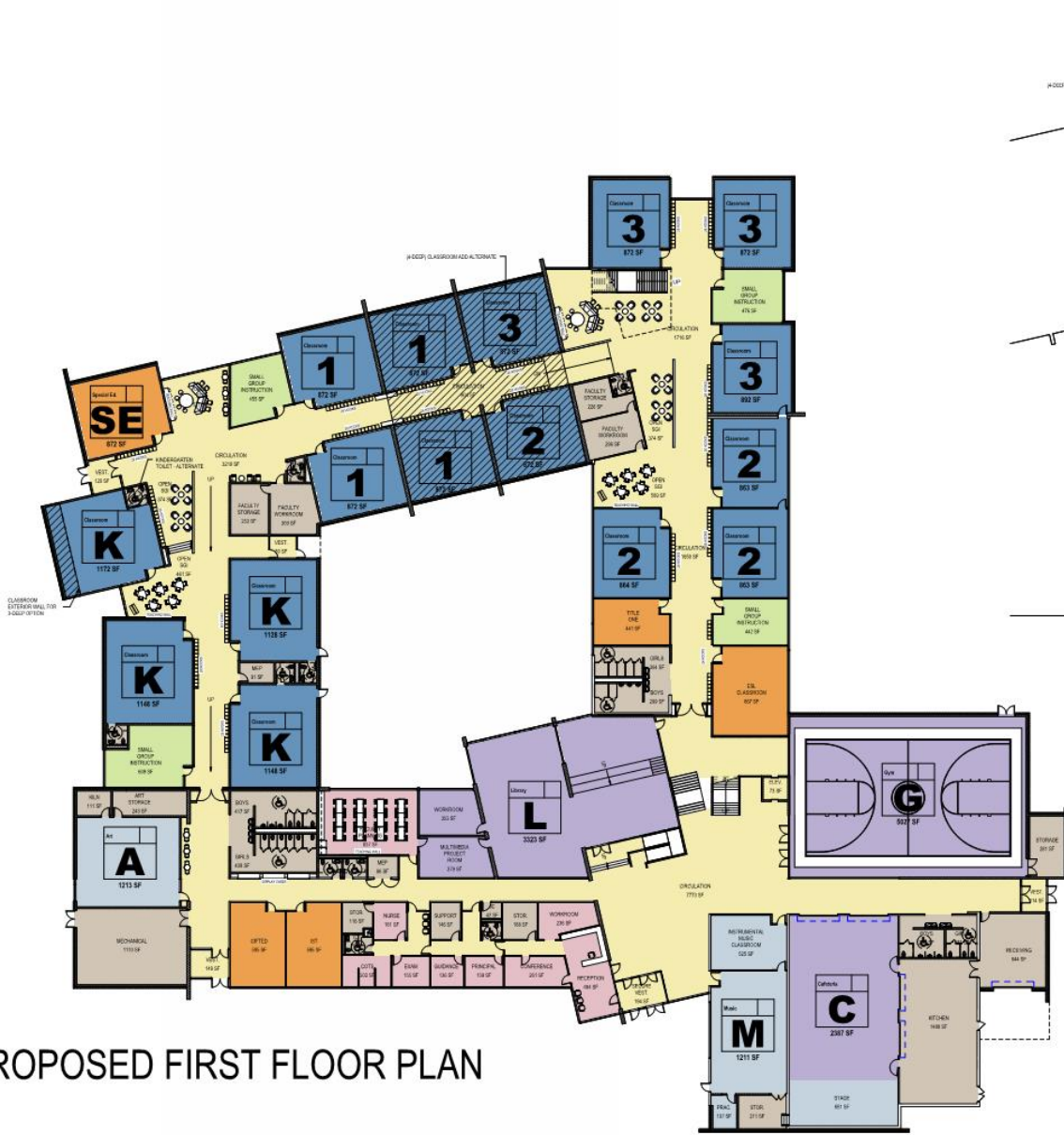




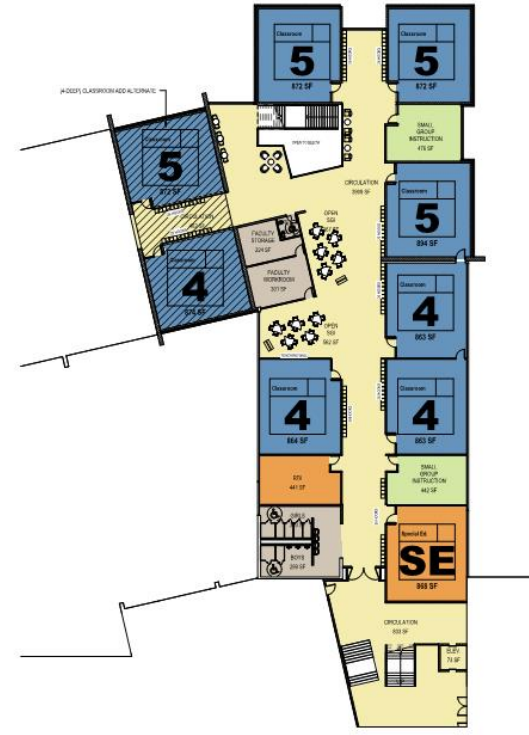
PROPOSED FIRST FLOOR PLAN



PROPOSED SECOND FLOOR PLAN



PROPOSED FIRST FLOOR PLAN



PROPOSED SECOND FLOOR PLAN



PROPOSED FIRST FLOOR PLAN



PROPOSED SECOND FLOOR PLAN