

# SCASD NORTH BUILDING

FEBRUARY 11, 2015  
60% SUBMISSION



## ARCHITECTS

**CR** Crabtree, Rohrbaugh & Associates  
Architects  
401 East Winding Hill Road  
Mechanicsburg, Pennsylvania 17055  
phone: (717) 458-0272 - fax: (717) 458-0047

## MEP ENGINEERS

**CENTERPOINT**  
ENGINEERING INC.

## CM SERVICES

 **Massaro**  
CM SERVICES, LLC

## CIVIL ENGINEERS

**EA**  
group, inc.  
MEMBER OF THE EAGLE GROUP

- 01** SITE
- 02** PROGRAM
- 03** BUILDING DESIGN
- 04** SCHEDULE
- 05** PHASING

**01 SITE**

02 PROGRAM

03 BUILDING DESIGN

04 SCHEDULE

05 PHASING



# 60% SUBMISSION

## REFINEMENTS IN –

- PARKING
- ACCESS / DELIVERIES
- BUS ACCESSIBILITY
- GRADING / UTILITIES
- TRAFFIC
- LANDSCAPING
- PLAZA CONCEPTS



1.02





1.03

CR

# CURRENT 60% DESIGN



01 SITE

02 **PROGRAM**

03 BUILDING DESIGN

04 SCHEDULE

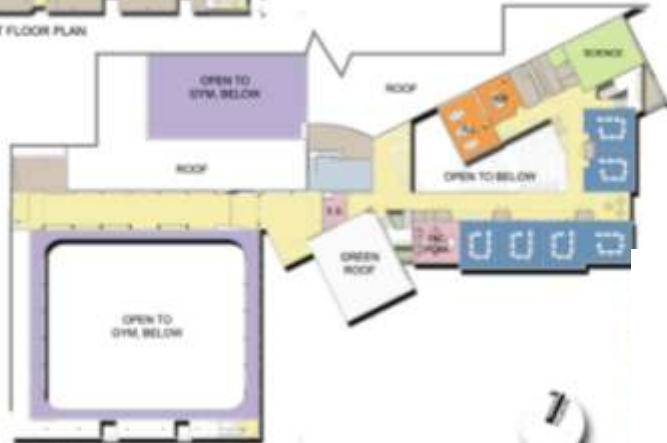
05 PHASING

# POST 30% SUBMISSION DESIGN

# CURRENT DESIGN



FIRST FLOOR PLAN



SECOND FLOOR PLAN



2.01



- 01 SITE
- 02 PROGRAM
- 03 BUILDING DESIGN**
- 04 ENGINEERING
- 05 SCHEDULE
- 06 PHASING
- 07 COST
- 08 LEED

# BRAIN SPACES TERMINOLOGY

“CORE LEARNING: TYPE A”

“CORE LEARNING: TYPE C”

“CORE LEARNING: TYPE D”

“CORE LEARNING: TYPE B”

“STUDENT COMMONS”

“ACADEMY SHOWCASE  
SPACE”

# PLANCON TERMINOLOGY

“CLASSROOM”

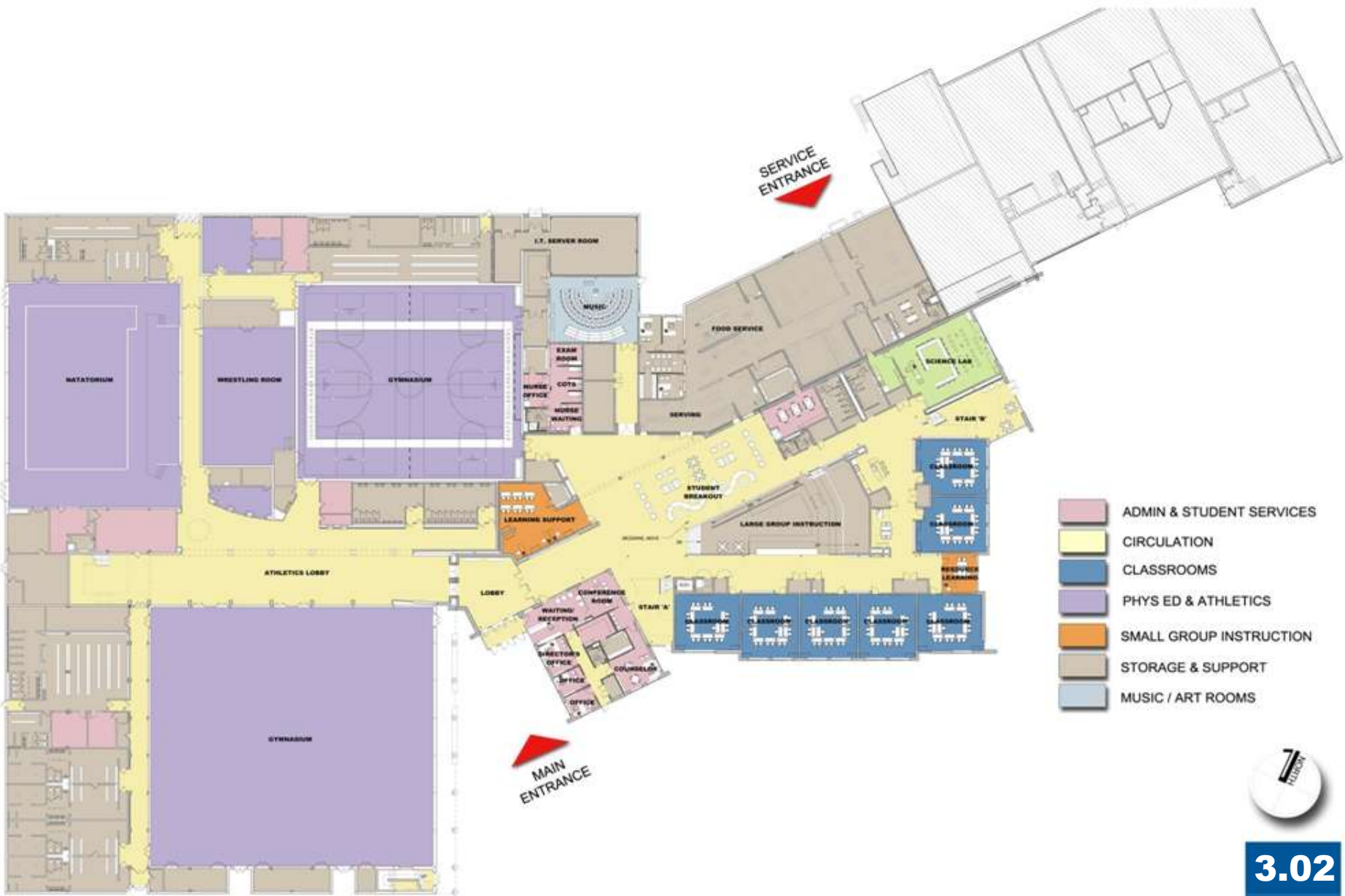
“LARGE GROUP  
INSTRUCTION”

“SMALL GROUP  
INSTRUCTION”

“OPEN CLASSROOM”

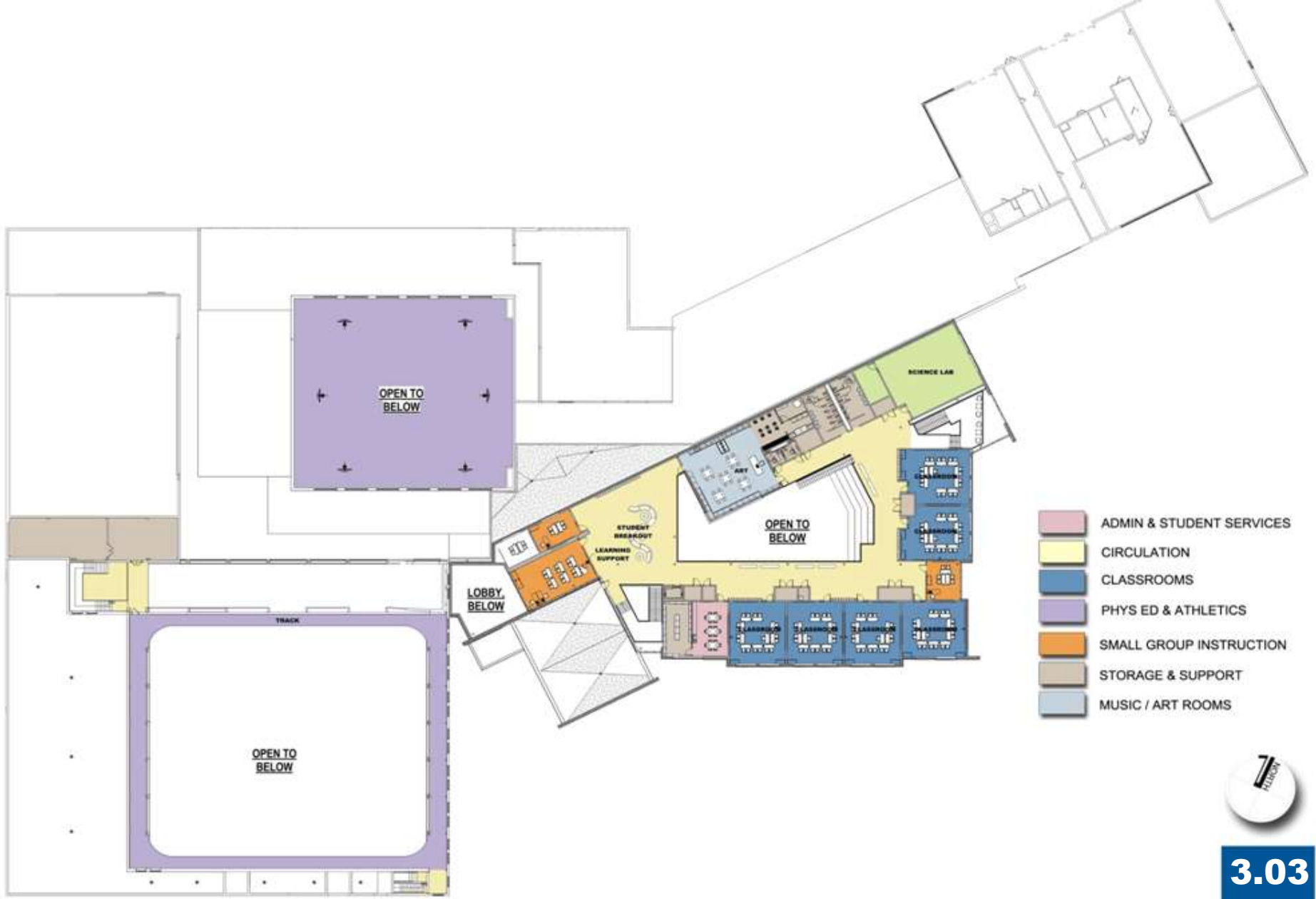
“SMALL GROUP BREAKOUT”

**NOTE:** THOUGH THE FUNCTION WILL BE CONSISTENT AS ILLUSTRATED IN THE BRAIN SPACES EDUCATIONAL SPECIFICATIONS, FOR MAXIMUM REIMBURSEMENT WE ARE PORTRAYING ALL AREAS THAT CAN HOLD A CLASSROOM QUANTITY OF STUDENTS “CLASSROOM”.



**3.02**

**FIRST FLOOR**



**3.03**

**ELEVATIONS**





**EXTERIOR**

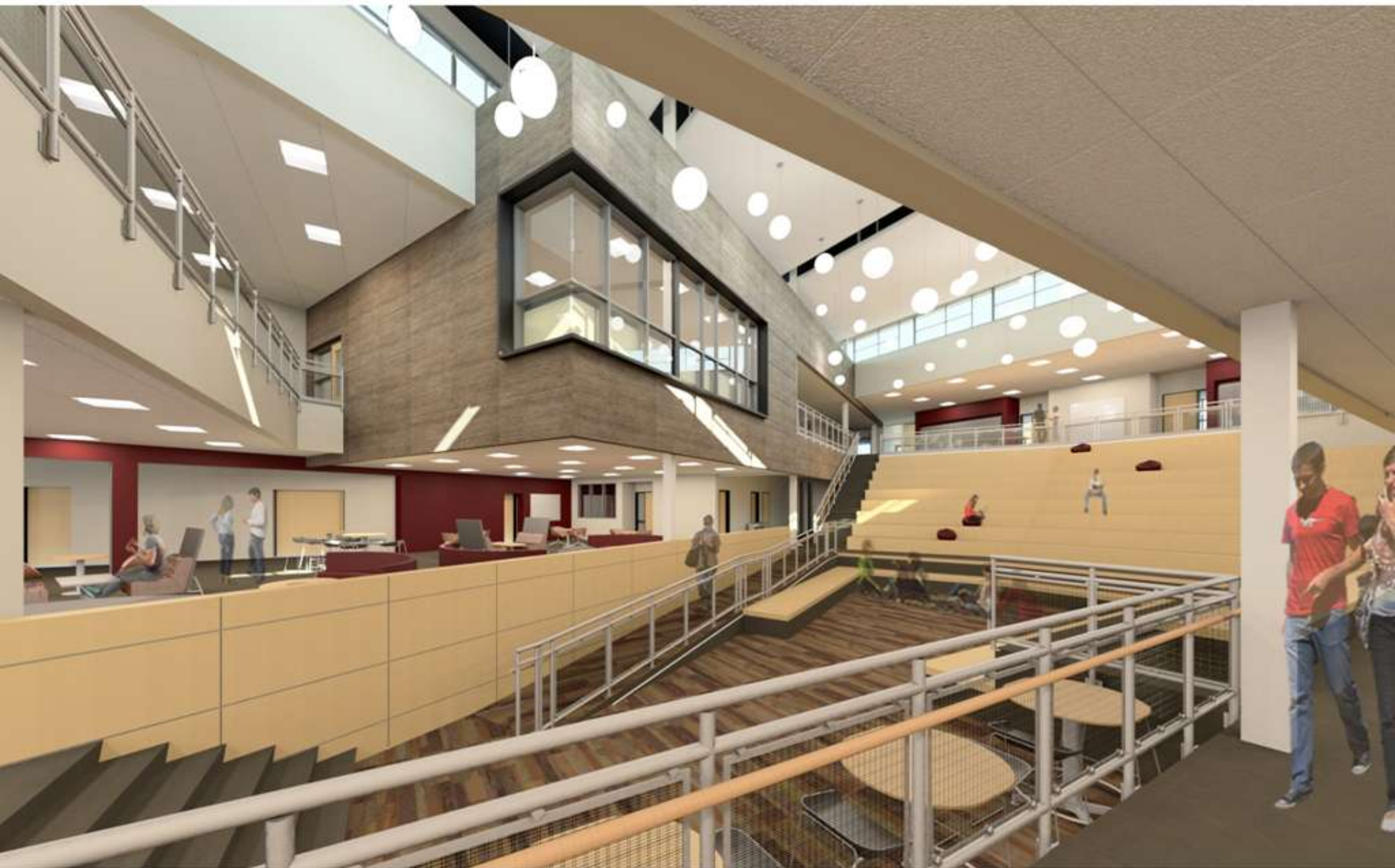


**EXTERIOR**





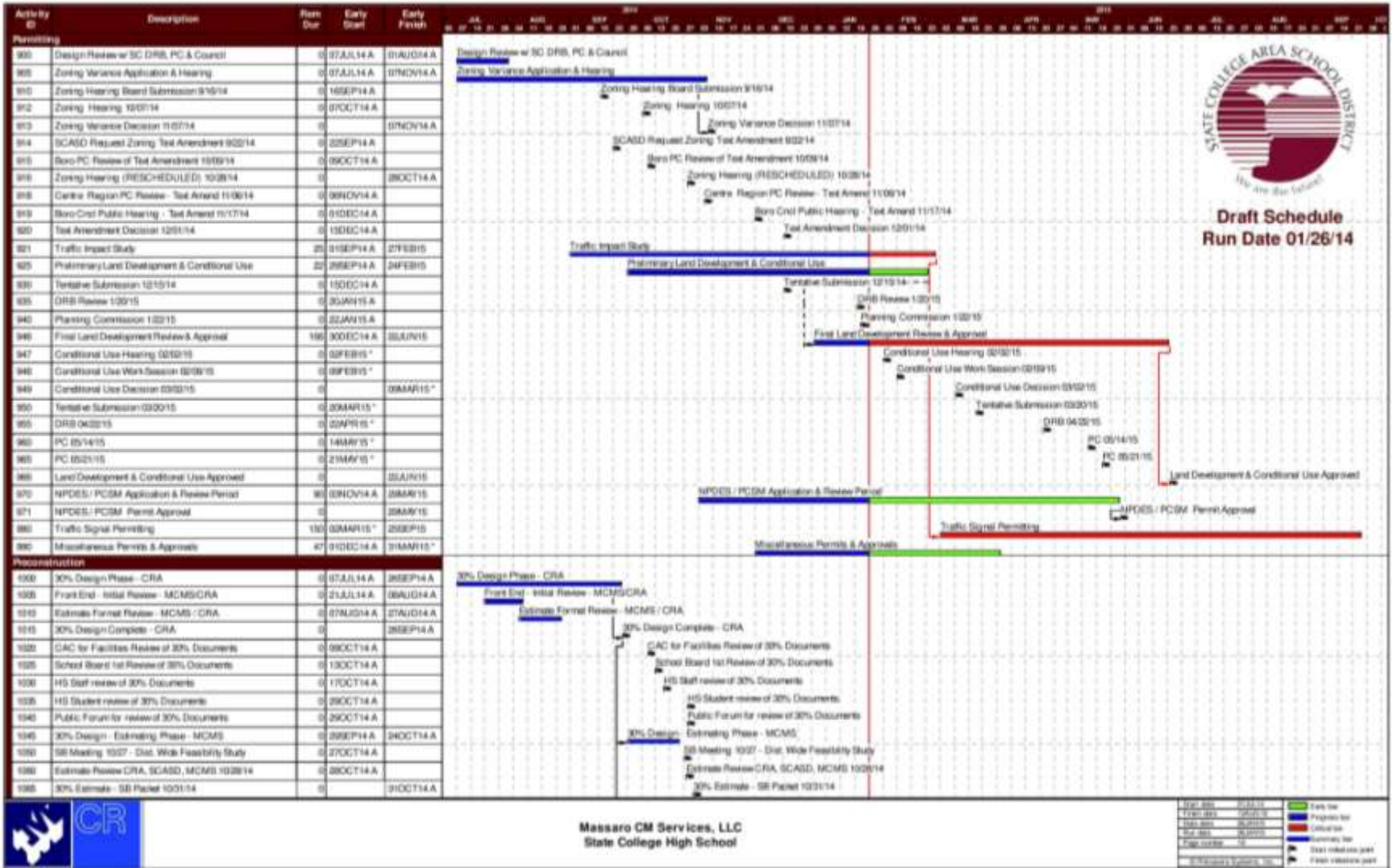
**INTERIOR**



**INTERIOR**



- 01 SITE
- 02 PROGRAM
- 03 BUILDING DESIGN
- 04 SCHEDULE**
- 05 PHASING

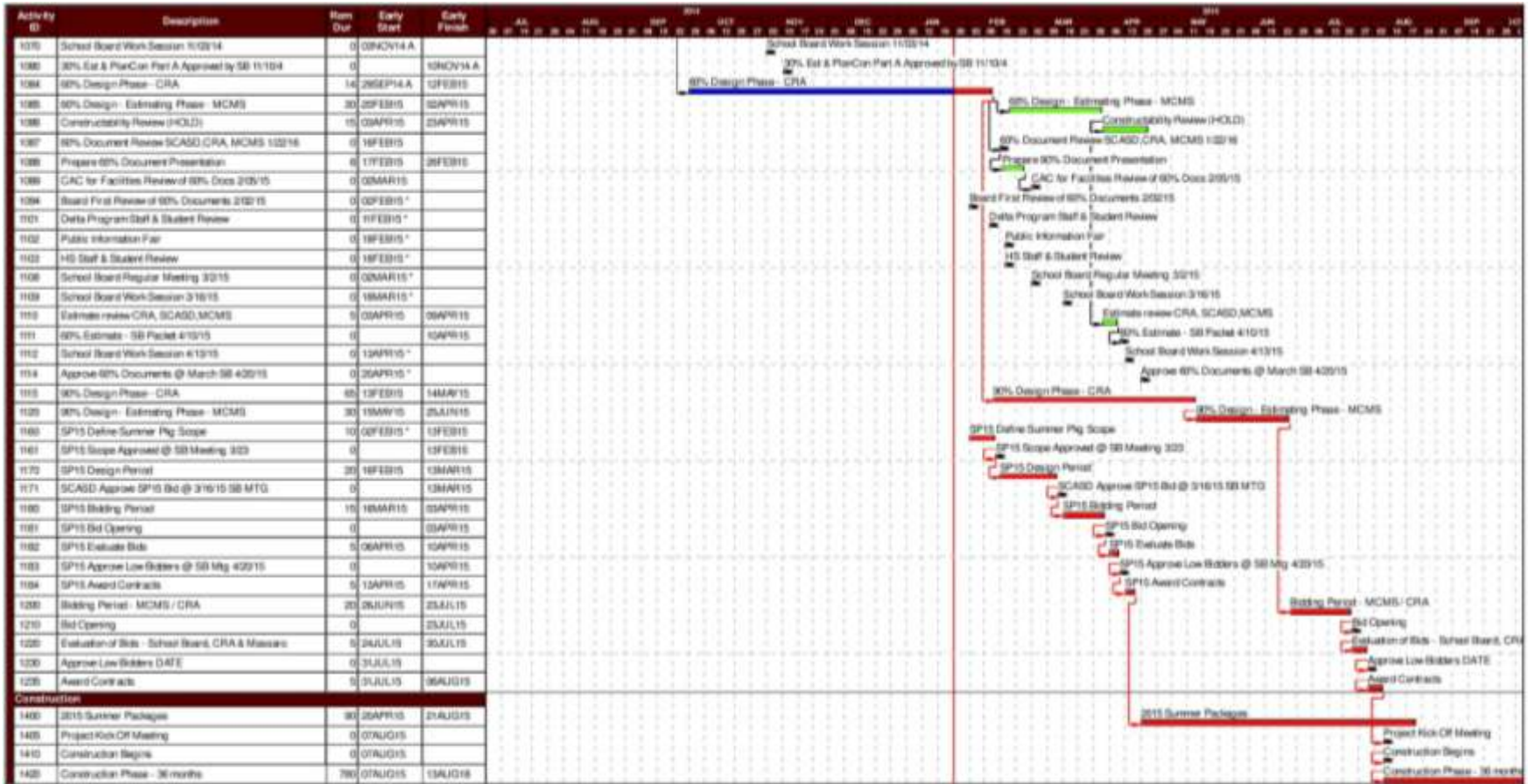


Draft Schedule  
Run Date 01/26/14

Massaro CM Services, LLC  
State College High School

Task ID	01/26/14	01/26/14	Task ID
Task ID	01/26/14	01/26/14	Task ID
Task ID	01/26/14	01/26/14	Task ID
Task ID	01/26/14	01/26/14	Task ID
Task ID	01/26/14	01/26/14	Task ID
Task ID	01/26/14	01/26/14	Task ID
Task ID	01/26/14	01/26/14	Task ID
Task ID	01/26/14	01/26/14	Task ID
Task ID	01/26/14	01/26/14	Task ID
Task ID	01/26/14	01/26/14	Task ID





Massaro CM Services, LLC  
State College High School

Start Date	11/10/14	Green bar	Early Use
Finish Date	12/10/14	Blue bar	Program Use
Start Date	12/10/14	Red bar	CR in Use
Start Date	01/01/15	Blue bar	Summer Use
Finish Date	01/01/15	Blue bar	CR in Use
Start Date	01/01/15	Blue bar	CR in Use
Start Date	01/01/15	Blue bar	CR in Use

4.02



- 01 SITE
- 02 PROGRAM
- 03 BUILDING DESIGN
- 04 SCHEDULE
- 05 PHASING**













5.04

CR

**MOVE IN 2018/2019 SCHOOL YEAR**







**QUESTIONS?**