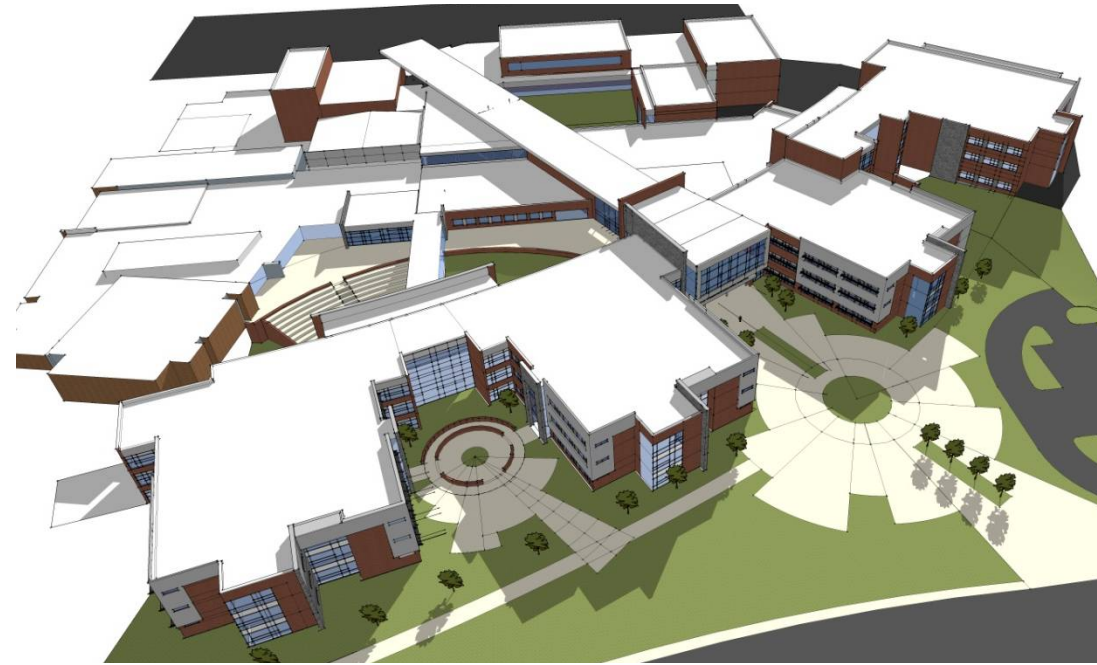


STATE COLLEGE AREA HIGH SCHOOL

60% Progress Report

4/22/2015



Agenda:
Welcome
Overview
Estimate Update
Feedback Received
Breakout Sessions



ARCHITECTS



**Crabtree, Rohrbaugh & Associates
Architects**
401 East Winding Hill Road
Mechanicsburg, Pennsylvania 17055
phone: (717) 458-0272 - fax: (717) 458-0047

MEP ENGINEERS

CENTERPOINT
ENGINEERING INC.

CM SERVICES



Massaro
CM SERVICES, LLC

CIVIL ENGINEERS



Process

- **Pre-Schematic Design (Referendum Phase)**
 - Budget Developed
- **Schematic Design (30%)**
 - 1st estimate
- **Design Development (60%)**
 - 2nd estimate
- **Contract Documents (90%)**
 - Final estimate
- **Bid**
- **Construction**

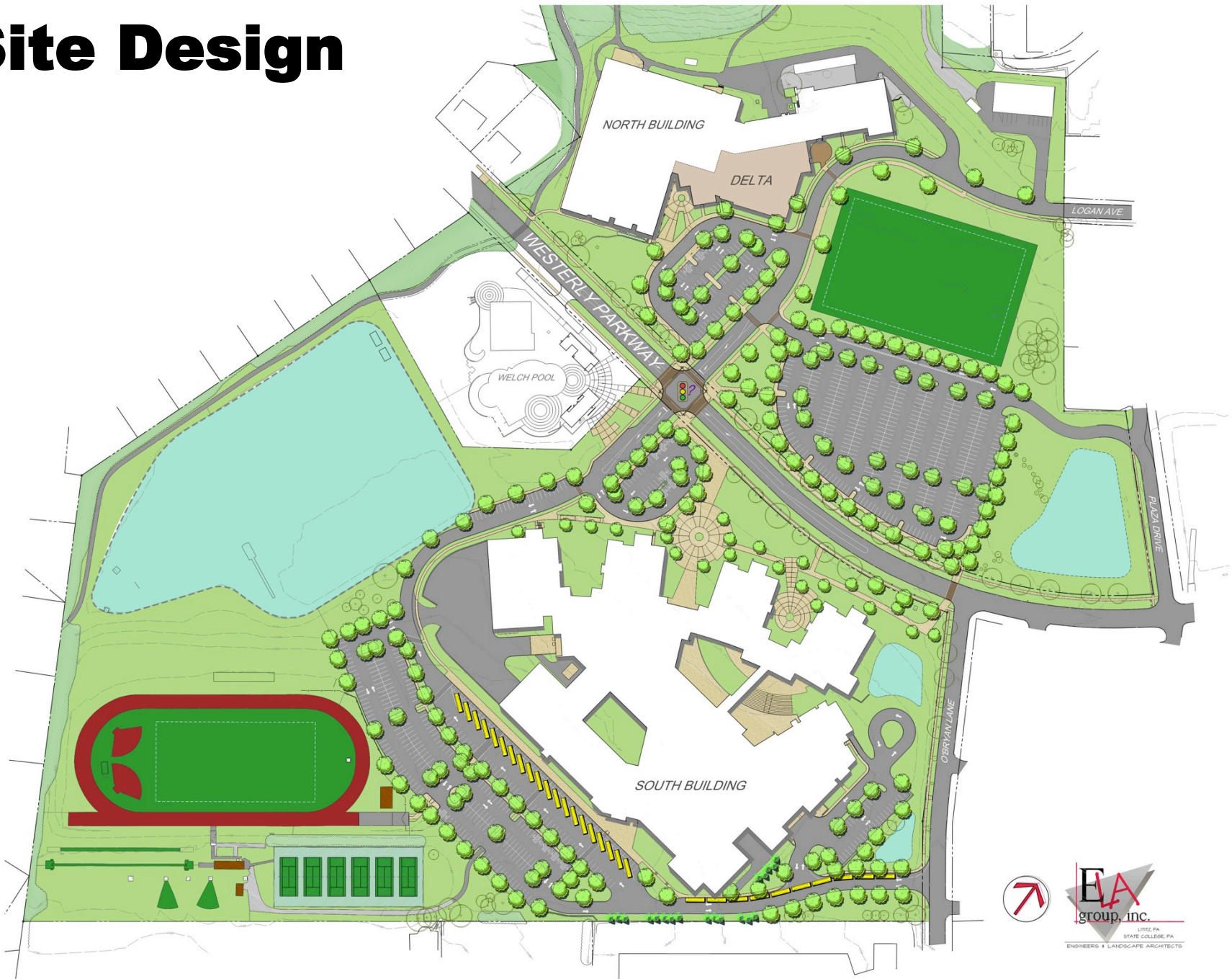
Site Design



- Refinements
- Parking
- Access/Deliveries
- Bus
- Accessibility
- Grading / Utilities
- Traffic
- Landscaping
- Plaza Concepts



Site Design



Detailed Program of Spaces

Space Program Summary

Project No. 2787

1/29/2015

The attached represents the Design Development Program Document as approved by the State College Area School District. This document supercedes the program document as developed by Amy Yurko of BrainSpaces for the Schematic Design Submission dated August 28, 2014.

	Referendum Area	30% S D Program	1-29-15 Program
1.0 9th Grade Learning Community	24,840	25,696	23,588
2.0 Arts & Humanities	23,140	22,876	21,632
3.0 Business & Communications LC	27,640	27,289	26,208
4.0 Health & Human Services	33,260	29,779	34,356
5.0 S.T.E.M. Learning Community	47,720	46,450	47,556
6.0 Specialty Programs	16,750	18,195	26,025
7.0 Visual & Performing Arts	29,300	29,652	33,558
8.0 Library, LE & Technolog	16,600	18,515	16,431
9.0 Phys. Ed, Health & Athletics	77,800	79,104	62,381
10.0 Admin & Student Services	9,650	13,852	14,288
11.0 Student Commons / Dining	24,400	37,321	23,840
12.0 Building Services	4,800	2,817	4,334
13.0 Delta Program	14,000	30,230	37,005
Totals	349,900	381,776	371,202
Gross Building Area	588,500	619,900	613,549
South	481,000	490,000	485,000
North	107,500	129,900	128,549
Gross Area Increase		31,400	(6,351)
Alternates			26,544

Program Conformance

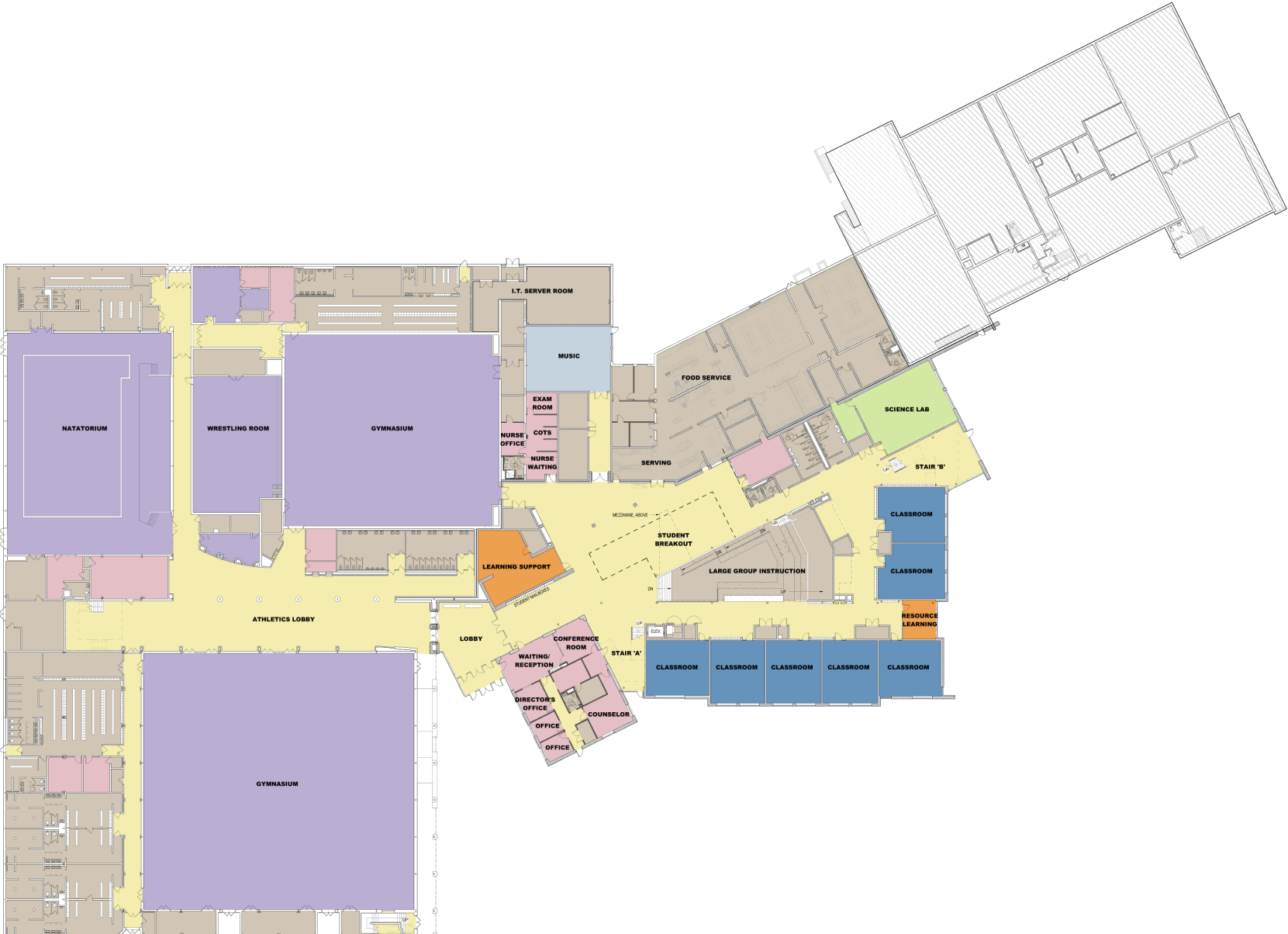


•Physical Education and Athletic spaces under consideration by Board

•Performing Arts spaces in redesign

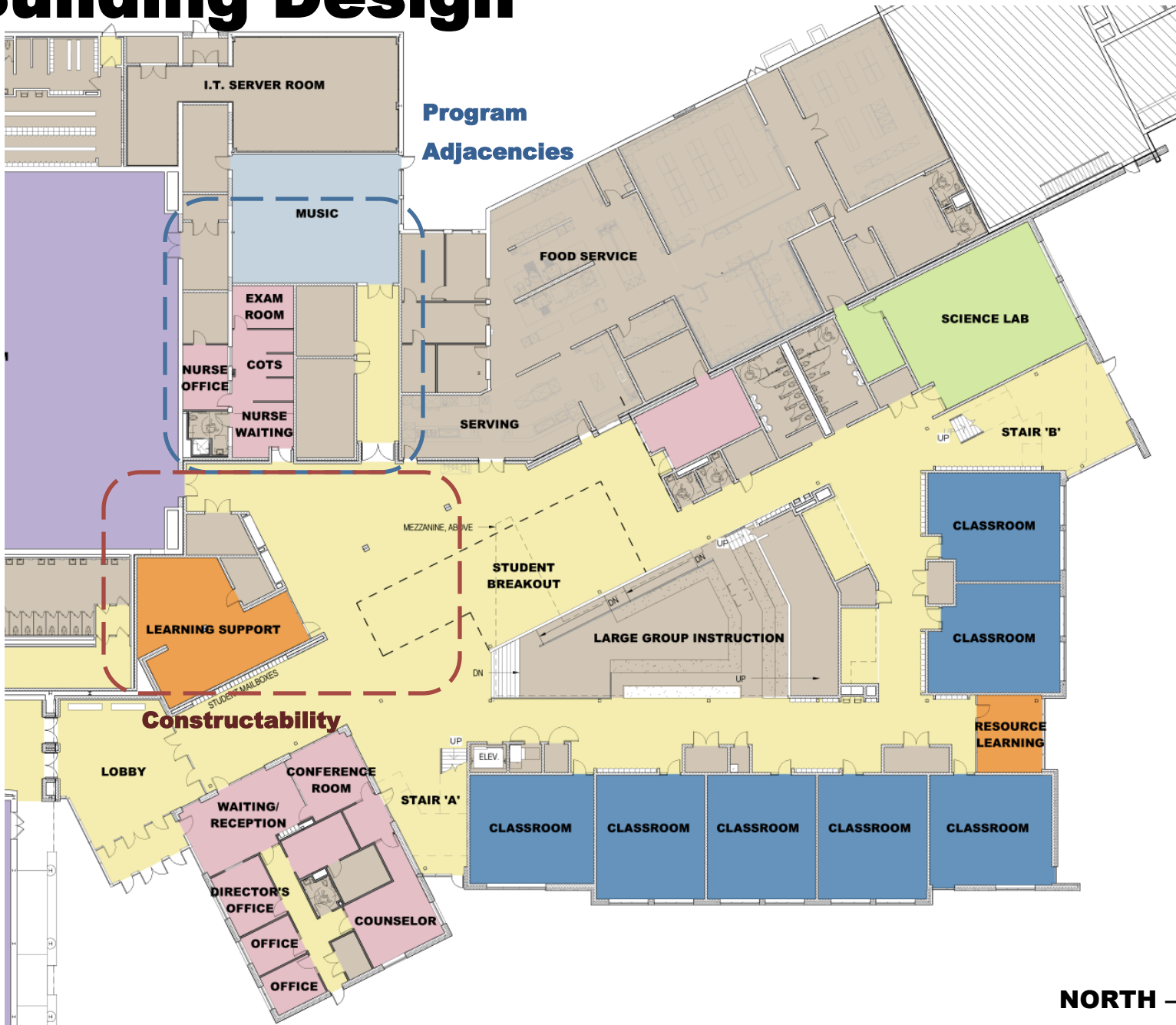
•3 months of Listening and Meeting with SCASD Staff

Building Design



NORTH - OVERALL FIRST FLOOR

Building Design



NORTH - FIRST FLOOR

Building Design

Legend

- Admin
- Auditorium
- Classroom
- Corridor
- Nurse
- Science
- SGI
- Special Ed.
- Stairs
- Storage
- Toilet
- Utility
- Vestibule

**Program Adjacency
Access / Location**

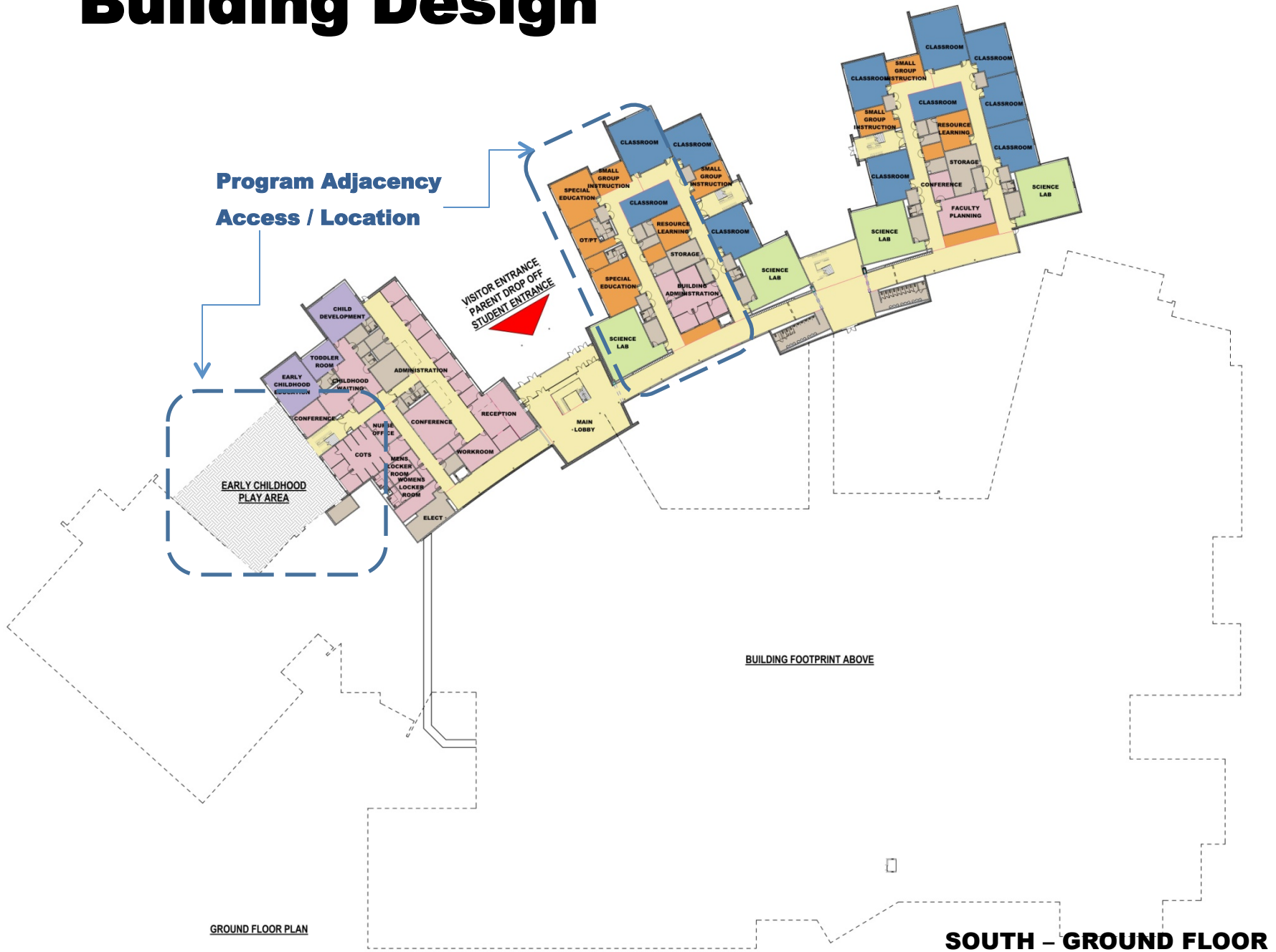
VISITOR ENTRANCE
PARENT DROP OFF
STUDENT ENTRANCE

EARLY CHILDHOOD
PLAY AREA

BUILDING FOOTPRINT ABOVE

GROUND FLOOR PLAN

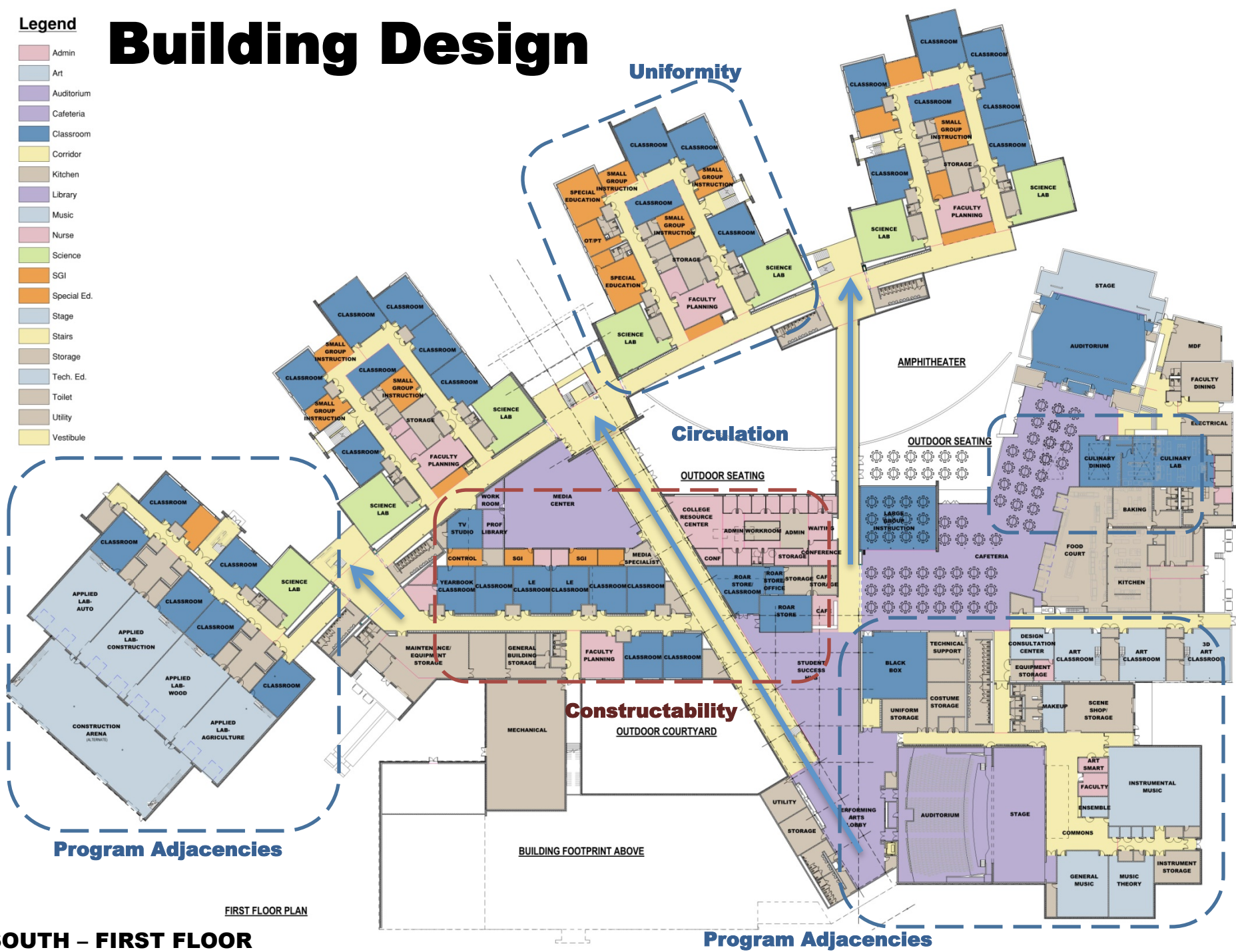
SOUTH - GROUND FLOOR



Legend

- Admin
- Art
- Auditorium
- Cafeteria
- Classroom
- Corridor
- Kitchen
- Library
- Music
- Nurse
- Science
- SGI
- Special Ed.
- Stage
- Stairs
- Storage
- Tech. Ed.
- Toilet
- Utility
- Vestibule

Building Design



FIRST FLOOR PLAN

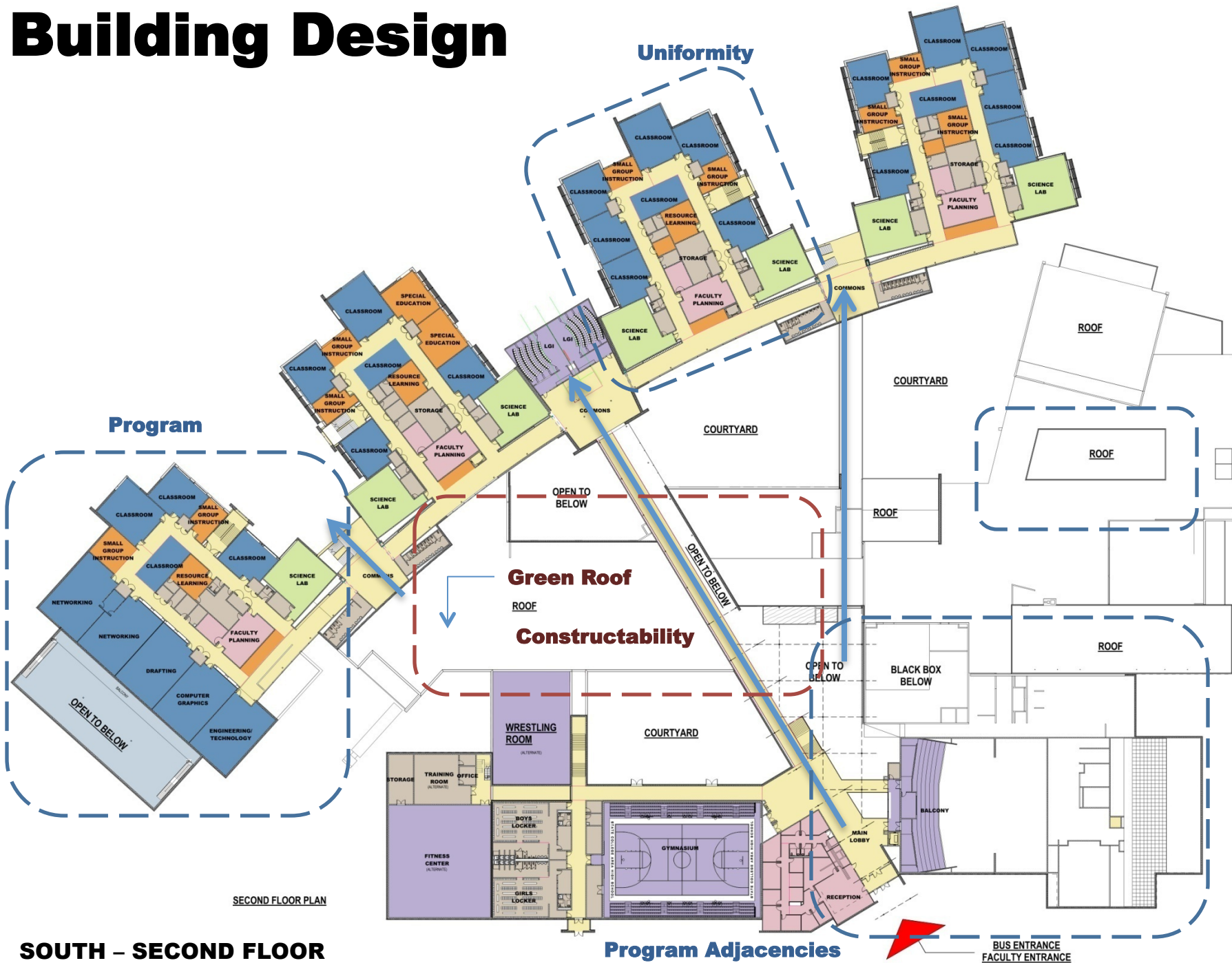
SOUTH - FIRST FLOOR

Program Adjacencies

Building Design

Legend

- Admin
- Art
- Auditorium
- Classroom
- Corridor
- Gym
- Kitchen
- Locker
- Nurse
- Science
- SGI
- Special Ed.
- STAIR
- Stairs
- Storage
- Tech. Ed.
- Toilet
- Utility
- Vestibule



SECOND FLOOR PLAN



SOUTH - SECOND FLOOR

Program Adjacencies

**BUS ENTRANCE
FACULTY ENTRANCE**

Building Design

Design Development

-  Building Organization
-  Constructability/Code



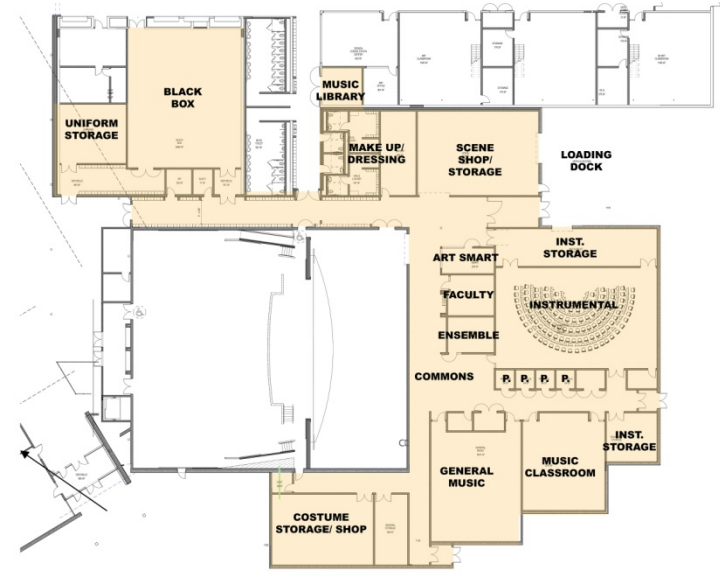
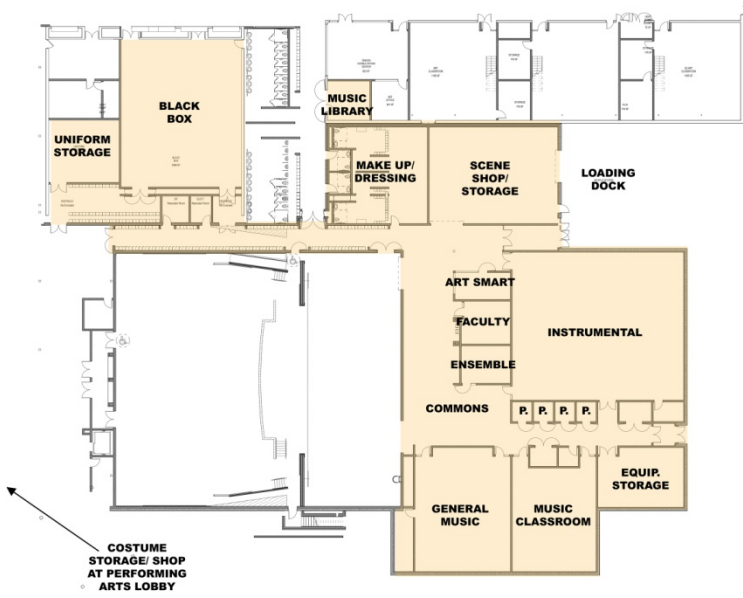
30% Floor Plan

Program Deficiencies (South)

- Art
- Performing Arts
- Culinary
- Networking Lab
- Health/Nursing Lab

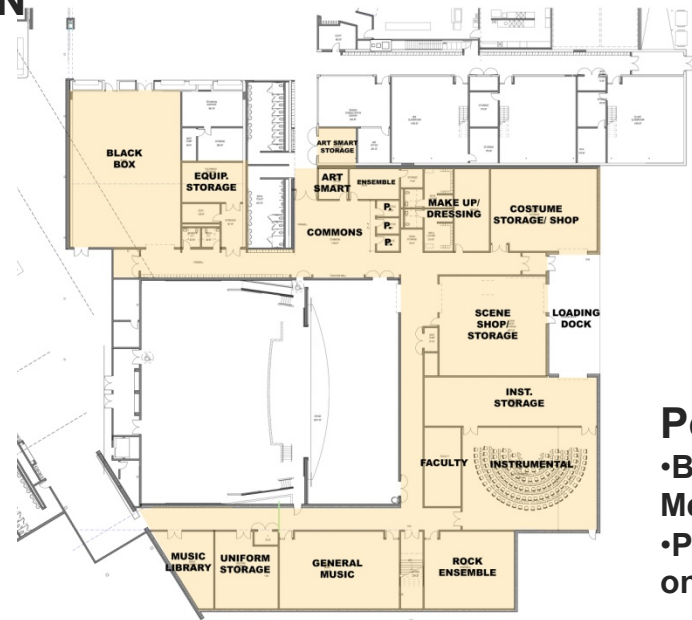


60% Floor Plan



APRIL 2ND DESIGN

- Based upon Booster Letters forwarded to CRA



Post APRIL 2ND DESIGN

- Based upon input from April 2nd Design Meeting with Performing Arts
- Presented to CAC/ Board Subcommittee on April 8th

POST APRIL 2ND DESIGN

- Current Organization of Spaces were based upon April 8, 2015 meeting with Performing Arts.

- Final Review with Performing Arts will occur after review and discussion with School Board.

- Current Design is a 6,900 Square Foot increase from the Original Educational Plan

- The Square Footage breakdown is provided on the following slide in an itemized breakdown of spaces.

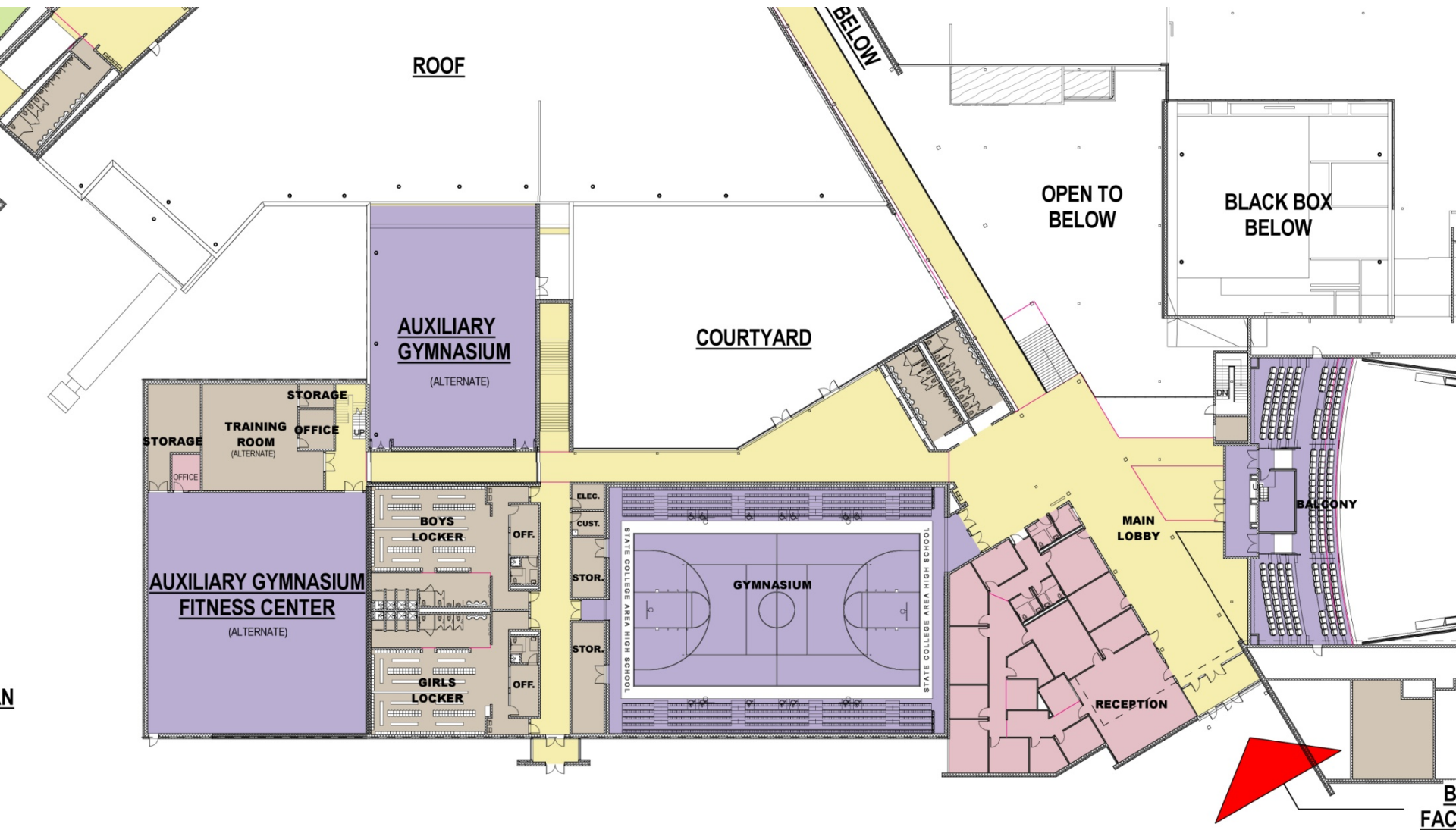
- 4,900 Square Feet of the increase is in the Stage and Miscellaneous Support Storage.

- Costume Storage/ Shop
- Instrument Storage
- Uniform Storage











**State College Area School District
High School Project**

Estimate

Comparison of Independent 60% Cost estimates

4/20/15

	Crabtree Rohrbaugh	Massaro
South*	\$90,636,007.00	\$101,235,000.00
North*	\$15,439,133.00	\$15,768,000.00
Total construction	\$106,075,140.00	\$117,003,000.00
Soft costs	\$18,230,721.00	\$18,230,721.00
Total Project cost	\$124,305,861.00	\$135,233,721.00
Grant (received)	\$2,000,000.00	\$2,000,000.00
Grant (projected)	\$2,000,000.00	\$2,000,000.00
SCASD cost**	\$120,305,861.00	\$131,233,721.00
Mid-level Delta cost	\$5,786,970.00	
Referendum Budget	\$115,000,000.00	
Base project cost estimate	\$114,518,891.00	\$125,446,751.00
% over/under to Referendum budget	-0.42%	9.08%
<i>*includes LEED Gold features identified in grant application</i>		
<i>** does not include PlanCon reimbursement</i>		

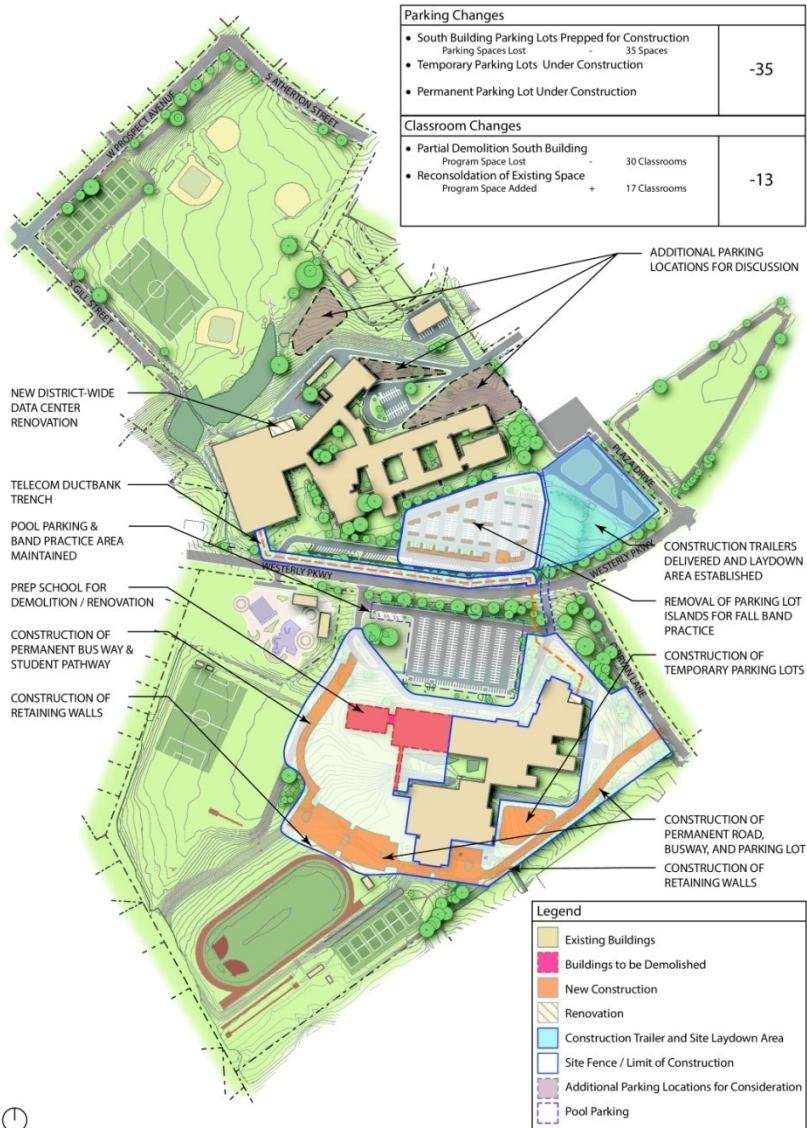
**Does not include
alternates for Fitness c
Center and Auxiliary Gym.**

**Does not include revisions
currently being considered
in Performing Arts spaces.**

Phasing

Phase 1.1 - June 2015 - August 2015

Site Setup, Abatement, Demolition, Permanent Busway & Parking Established



Phase 1.2 - September 2015 - January 2017

Construction of 4 Education Units and Mechanical Room of New Building & Renovation of Kitchen



Phasing

Phase 2.1 - January 2017 - May 2017

Continued Construction of New Building / Renovation of South Building



Phase 2.2 - June 2017 - August 2017

Continued Construction of New Building / Demolition of North Building



Phasing

Phase 3.1 - September 2017 - May 2018 Renovation and Addition to North Building



Phase 3.2 - June 2018 - July 2018 North Building Move-in, Parking and Site Work

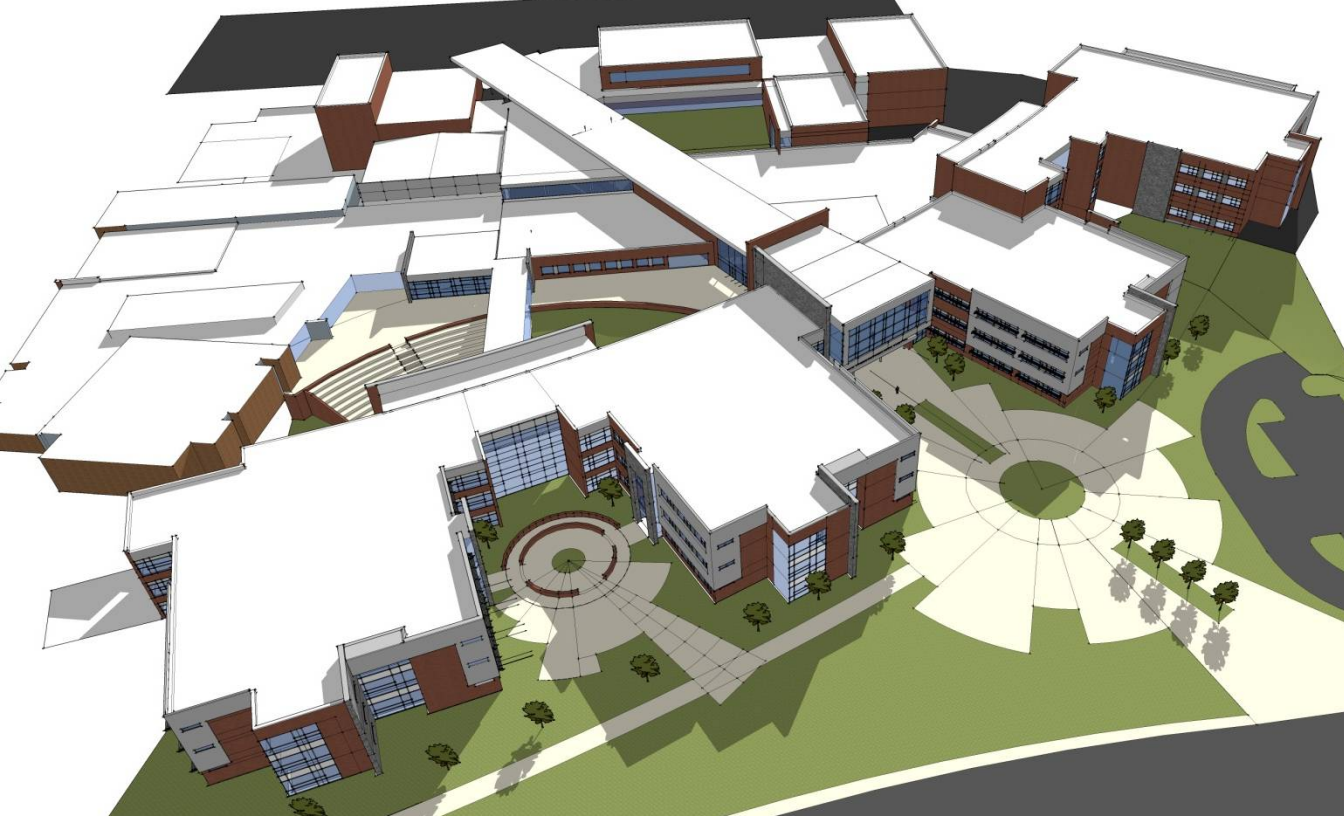


Feedback

- **Primary Public Feedback regarding the 60% design has been related to the Performing Arts and Physical Education Spaces**
- **Concurrent Breakout Sessions:**
 - General and Phasing
 - Music and Performing Arts
 - Physical Education and Athletics

STATE COLLEGE AREA HIGH SCHOOL

60% Progress Report



ARCHITECTS



**Crabtree, Rohrbaugh & Associates
Architects**
401 East Winding Hill Road
Mechanicsburg, Pennsylvania 17055
phone: (717) 458-0272 - fax: (717) 458-0047

MEP ENGINEERS

CENTERPOINT
ENGINEERING INC.

CM SERVICES



Massaro
CM SERVICES, LLC

CIVIL ENGINEERS

