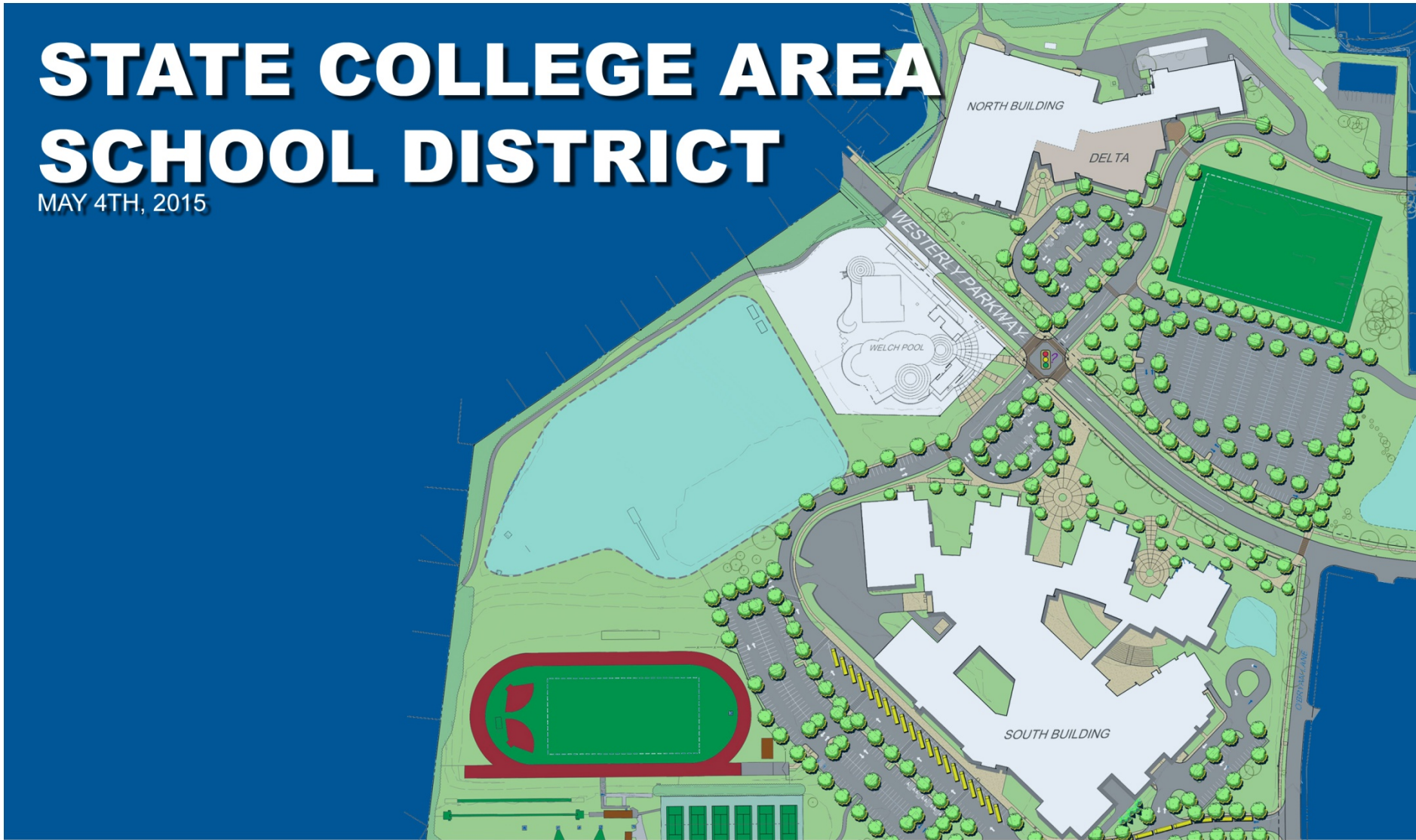


STATE COLLEGE AREA SCHOOL DISTRICT

MAY 4TH, 2015



ARCHITECTS



**Crabtree, Rohrbaugh & Associates
Architects**
401 East Winding Hill Road
Mechanicsburg, Pennsylvania 17055
phone: (717) 458-0272 - fax: (717) 458-0047

MEP ENGINEERS

CM SERVICES



Massaro
CM SERVICES, LLC

CIVIL ENGINEERS



Legend

- Admin
- Classroom
- Corridor
- Nurse
- Science
- SGI
- Special Ed.
- Stairs
- Storage
- Toilet
- Utility
- Vestibule



BUILDING FOOTPRINT ABOVE

Legend

- Admin
- Art
- Auditorium
- Cafeteria
- Classroom
- Corridor
- Kitchen
- Library
- Locker
- Music
- Nurse
- Science
- SGI
- Special Ed.
- Stage
- Stairs
- Storage
- Tech. Ed.
- Toilet
- Utility
- Vestibule



FIRST FLOOR PLAN

BUILDING FOOTPRINT ABOVE

Legend

- Admin
- Art
- Auditorium
- Classroom
- Corridor
- Gym
- Kitchen
- Locker
- Nurse
- Science
- SGI
- Special Ed.
- STAIR
- Stairs
- Storage
- Tech. Ed.
- Toilet
- Utility
- Vestibule



SECOND FLOOR PLAN

BUS ENTRANCE
FACILITY ENTRANCE

1.03

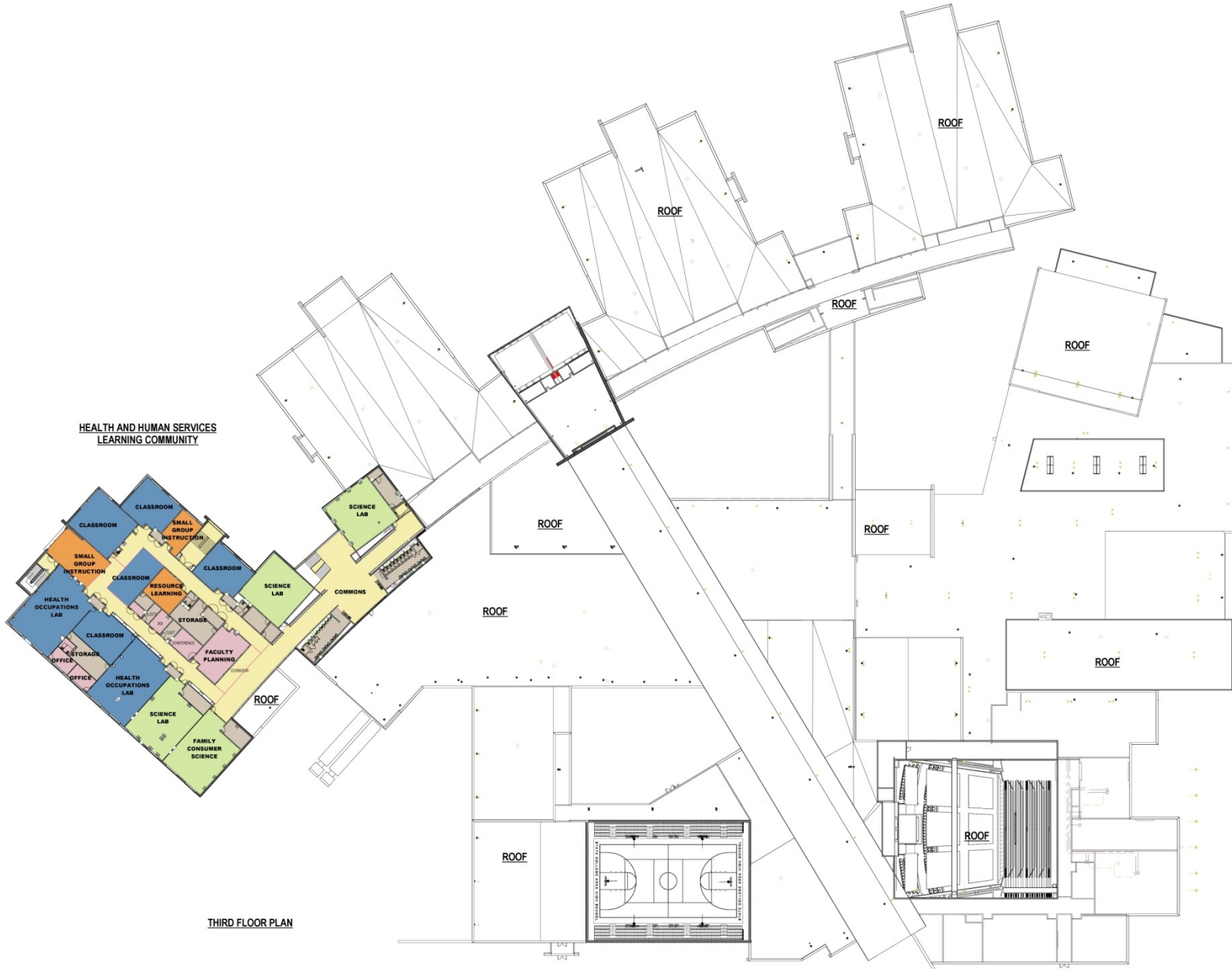


SECOND FLOOR PLAN- SOUTH BUILDING

Legend

- Admin
- Art
- Auditorium
- Classroom
- Corridor
- Locker
- Nurse
- Science
- SGI
- Stairs
- Storage
- Toilet
- Utility

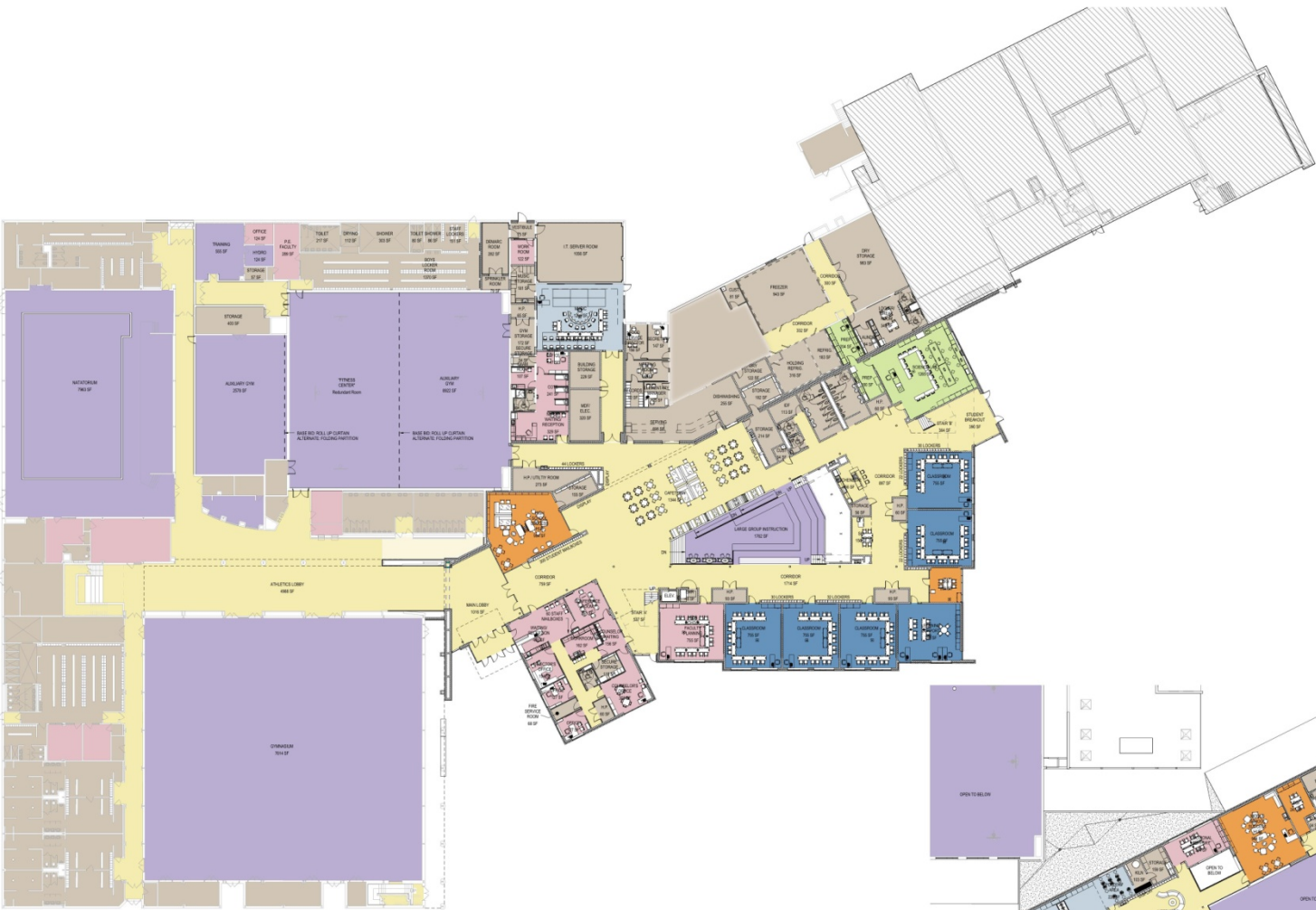
HEALTH AND HUMAN SERVICES
LEARNING COMMUNITY



THIRD FLOOR PLAN

Legend

- Admin
- Art
- Auditorium
- Classroom
- Corridor
- Locker
- Nurse
- Science
- SGL
- Stairs
- Storage
- Toilet
- Utility

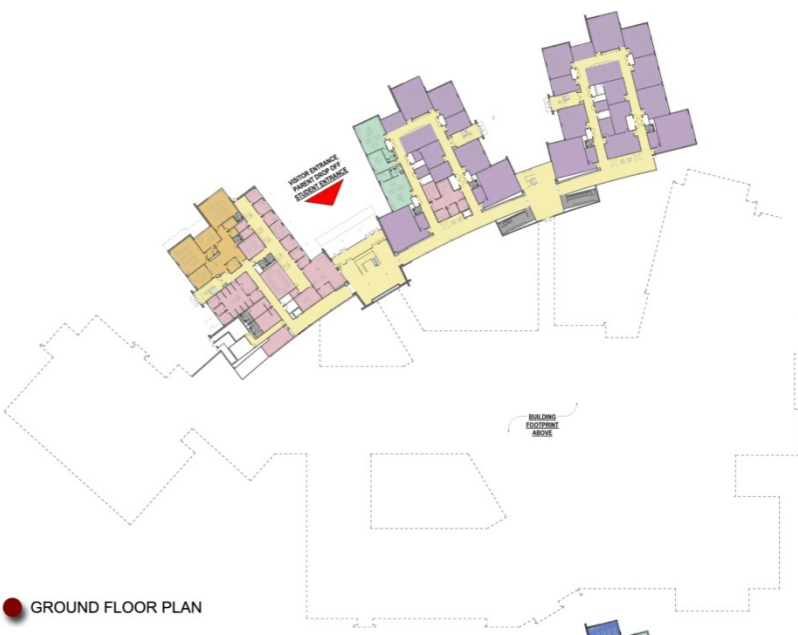


OVERALL FIRST FLOOR PLAN
1/8" = 1'-0"



LEGEND

- 1.0 9TH GRADE L.C.
- 2.0 ARTS & HUMANITIES L.C.
- 3.0 BUSINESS & COMMUNICATIONS L.C.
- 4.0 HEALTH & HUMAN SERVICES L.C.
- 5.0 S.T.E.M. L.C.
- 6.0 SPECIALTY PROGRAMS
- 7.0 VISUAL & PERFORMING ARTS L.C.
- 8.0 LIBRARY, LE & TECHNOLOGY
- 9.0 P.E., HEALTH & ATHLETICS
- 10.0 ADMIN & STUDENT SERVICES
- 11.0 STUDENT COMMONS/DINING
- 12.0 BUILDING SERVICES
- CIRCULATION
- SUPPORT
- TOILETS



GROUND FLOOR PLAN



SECOND FLOOR PLAN



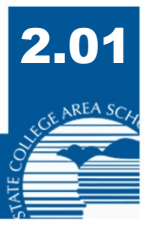
FIRST FLOOR PLAN



THIRD FLOOR PLAN

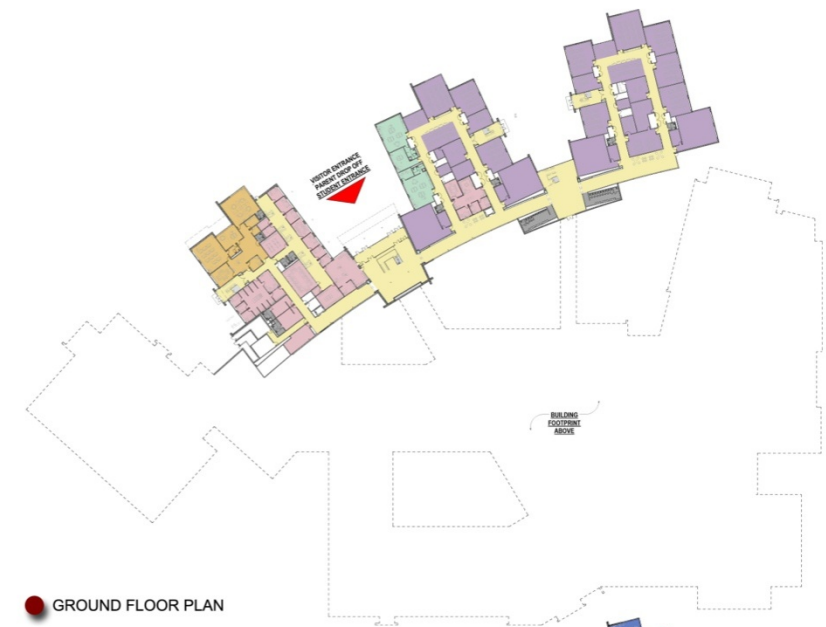


SOUTH BUILDING – PROGRAM ORGANIZATION



LEGEND

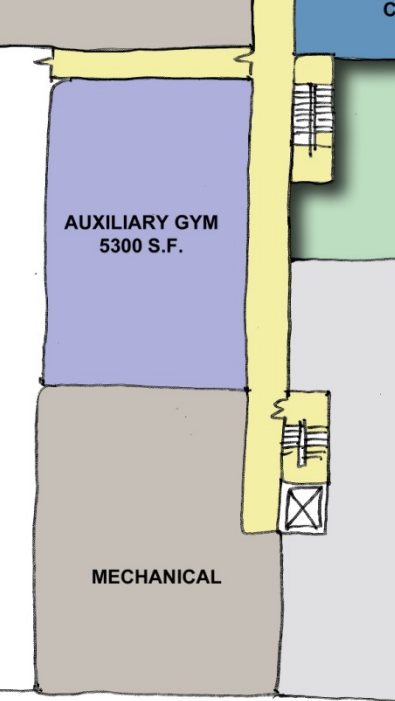
- 1.0 9TH GRADE L.C.
- 2.0 ARTS & HUMANITIES L.C.
- 3.0 BUSINES & COMMUNICATIONS L.C.
- 4.0 HEALTH & HUMAN SERVICES L.C.
- 5.0 S.T.E.M. L.C.
- 6.0 SPECIALTY PROGRAMS
- 7.0 VISUAL & PERFORMING ARTS L.C.
- 8.0 LIBRARY, LE & TECHNOLOGY
- 9.0 P.E., HEALTH & ATHLETICS
- 10.0 ADMIN & STUDENT SERVICES
- 11.0 STUDENT COMMONS/ DINING
- 12.0 BUILDING SERVICES
- CIRCULATION
- SUPPORT
- TOILETS



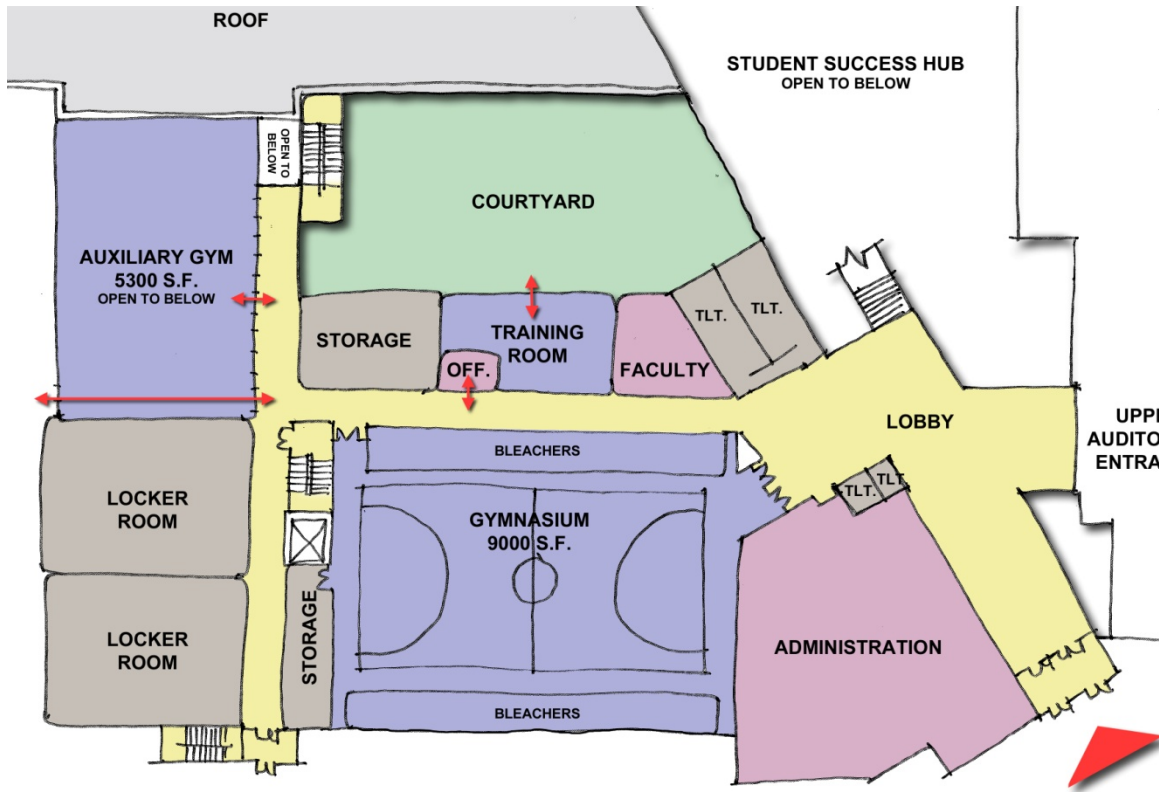
LEGEND

- 1.0 9TH GRADE L.C.
- 2.0 ARTS & HUMANITIES L.C.
- 3.0 BUSINES & COMMUNICATIONS L.C.
- 4.0 HEALTH & HUMAN SERVICES L.C.
- 5.0 S.T.E.M. L.C.
- 6.0 SPECIALTY PROGRAMS
- 7.0 VISUAL & PERFORMING ARTS L.C.
- 8.0 LIBRARY, LE & TECHNOLOGY
- 9.0 P.E., HEALTH & ATHLETICS
- 10.0 ADMIN & STUDENT SERVICES
- 11.0 STUDENT COMMONS/ DINING
- 12.0 BUILDING SERVICES
- CIRCULATION
- SUPPORT
- TOILETS

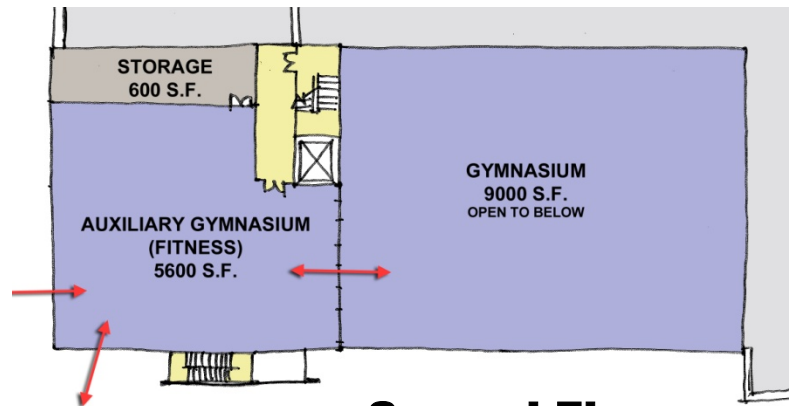




Ground Floor



First Floor



Second Floor

