

# **Bryn Mawr Elementary**

## **State of the School Meeting**

Tuesday, October 10, 2023

# Tonight's Agenda

**01 Meeting Purpose**

**02 Mission**

**03 Building Strengths & Challenges**

**04 School Improvement Plan**

- Goals & Strategies
- Sharing Student Progress


**05 Caregiver Conversation**

**06 Title I**

Overview of Title I

How we are using funding

# Purpose of the State of the School Meeting

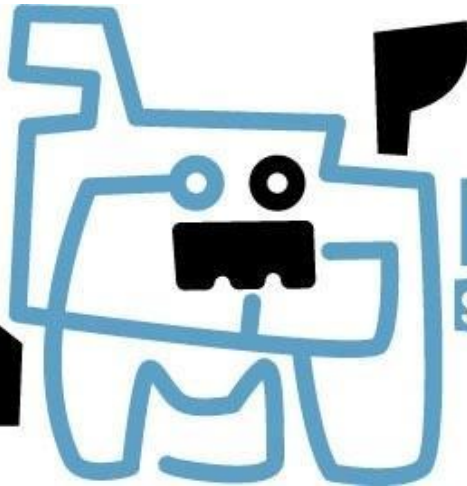
- Provide information about the current state of the school
  - Provide an update on the School Improvement Plan
  - Share priorities, goals and strategies for improvement
  - Get input from families and community.
- Provide ways in which families can be engaged throughout the year.
  - Clarify the purpose of Title I
  - Outline the communication parents/guardians can expect to receive regarding their child's progress.
- 
- A decorative illustration of a plant with several long, thin leaves, positioned at the bottom center of the slide, overlapping the two main content boxes.

# Bryn Mawr Bulldogs

Who We Are



**BRYN**



**MAWR**  
school

# Bryn Mawr Elementary School:

## Demographics:

| School Makeup                      | 419 Students  | 30,710 Students |
|------------------------------------|---------------|-----------------|
| <b>Student Race</b>                | <b>School</b> | <b>District</b> |
| Native American                    | 2.85%         | 3.57%           |
| African American                   | 44.63%        | 27.57%          |
| Asian American                     | 12.89%        | 3.72%           |
| Hispanic American                  | 12.89%        | 20.75%          |
| White American                     | 15.51%        | 36.81%          |
|                                    |               |                 |
| Receive ELL Services               | 18.38%        | 17.55%          |
| Qualify for Free/Reduced Lunch     | 84.24%        | 57.3%           |
| Receive Special Education Services | 27.06%        | 17.20%          |

## School and Community Description:

- Bryn Mawr is a community school serving students from Minneapolis and surrounding communities in grades pre-kindergarten through five.
- We offer:
  - Full-day PreK
  - Accelerated math and literacy
  - Inclusive Special Education and EL programming
  - DNR School Forest Designation- adjacent to Theodore Wirth Park
  - Science specialist
  - Somali and Spanish bilingual staff
- Our PathWay Schools are:
  - Anwatin Middle School
  - North High School
- We have strong community partnerships with:
  - Our School PTA
  - The Bryn Mawr Neighborhood Association
  - MN DNR

# At Bryn Mawr Elementary School:

## Our Mission:

The mission of Bryn Mawr Community School is to teach students academic and social skills that will lead them to succeed in their lives as children and adults.

## Our Strengths:

- ❖ Amazing Students!!
- ❖ Dedicated/highly trained staff
- ❖ Strong parent & community support
- ❖ Differentiated instructional planning based on data analysis
- ❖ Intervention planning

## Our Challenges:

- ❖ Coming off 3 non-congruous years of instruction for: students, staff and families
- ❖ Transportation and Attendance
- ❖ Grade level configuration changes
  - Number of sections
  - Staffing
- ❖ Hiring of staff

# **Bryn Mawr Elementary School Improvement Plan**

# What's a School Improvement Plan?

## Our school improvement plan:

- Sets the **goals** that our school community is working to achieve
- Identifies the **strategies or activities** that will help us reach those goals together

*Every Minneapolis Public School is required to develop, implement, and monitor a school improvement plan.*





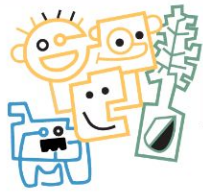


Due to our Minnesota Comprehensive Assessment (MCA) results for our students identified as eligible for Free and Reduced Lunch (FRL), Bryn Mawr Elementary School has been designated as an ESSA Comprehensive Support and Improvement School.

This is Year 2 in the ESSA cycle.

What does this mean?

- We have completed a targeted needs assessment looking at why we were identified.
- We have developed a plan addressing the root causes behind the reasons identified in our needs assessment.
- We have identified plans to continue implementing and monitoring the improvement plans.



**BRYN MAWR**  
school

# SIP 2023-2024

## Vision

All students middle school ready.

## Mission

The mission of Bryn Mawr Community School is to teach students academic and social skills that will lead them to succeed in their lives as children and adults.

### Strategy 1: Academic Achievement

PLCs Implementation focusing on: K-2 Functional Phonics 3-5  
Guided Reading Number sense through number corner

### Strategy 2: Student Well-Being

Eliminate systemic barriers to student attendance and access to programming

### Strategy 3: Effective Staff

Professional Learning Community Collaboration  
Peer Observation Opportunities

### Strategy 4: School Climate

Regular check-in on mental and emotional wellness of all staff  
Weekly staff appreciation and acknowledgement

## Goal 1: Academic Achievement

**READING:** The percentage of FRL students who are proficient in reading will increase from 17% to 34% by Spring of 2024 as measured by the FAST aReading assessment.

**MATH:** The percentage of FRL students who are proficient in math will increase from 16% to 32% by Spring of 2024 as measured by the FAST aMath assessment.

## Goal 2: Student Well-Being

The percentage of FRL students who consistently attend school will increase from 51% to 66% by Spring of 2024.

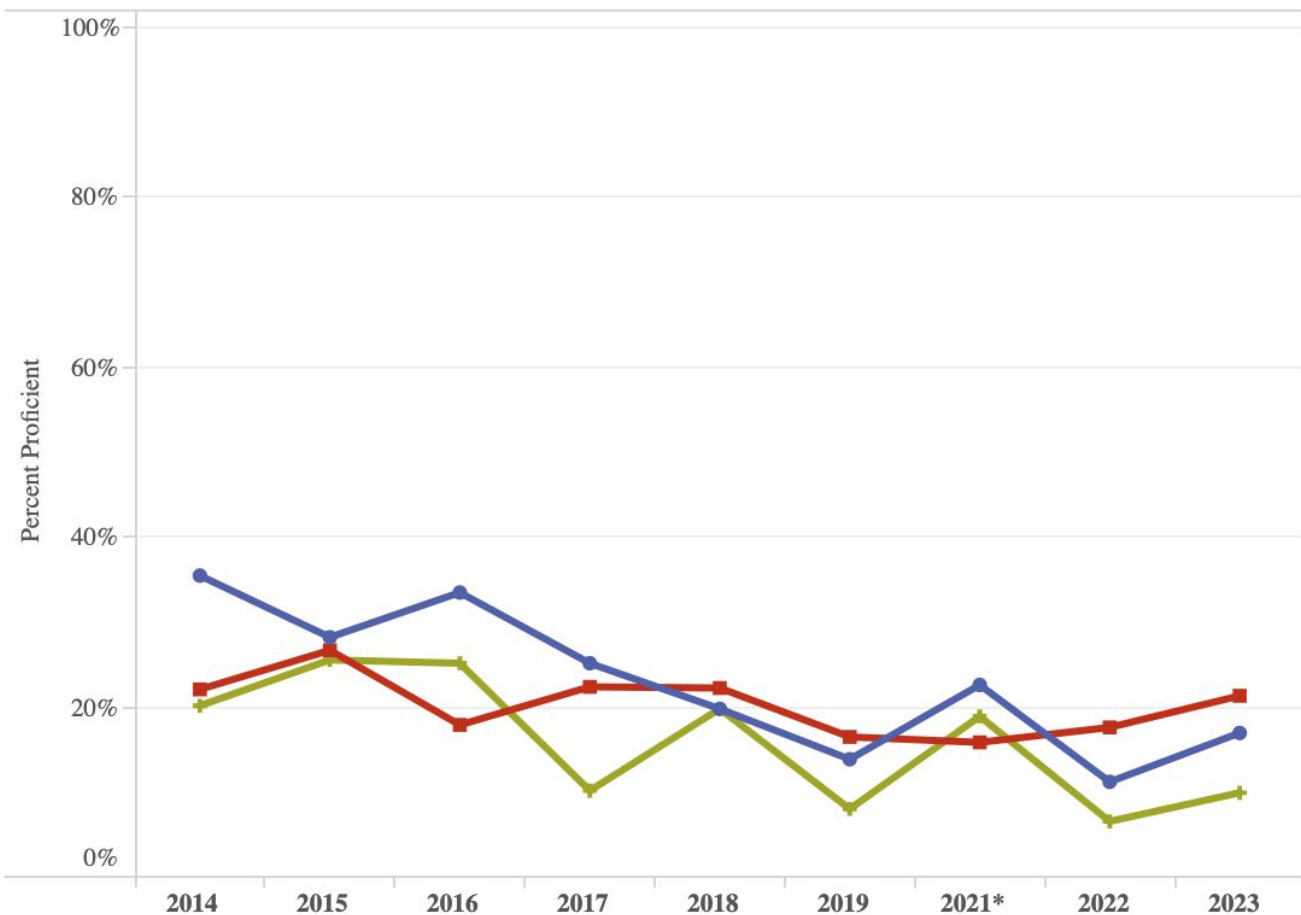
## Goal 3: Effective Staff

The percentage of teacher collaborative practices will increase from 44% to 65% (strong) by Spring 2024 as measured by the 5E survey.

## Goal 4: School Climate

At least 90% of staff will remain working at Bryn Mawr by Spring 2024 as measured by HR data.

# MCA's Gains



## Subject

- Math
- Reading
- + Science

## SY 22-23 Proficiency Increases

Math: 11% - 17%

Reading: 17% - 21%

Science: 6% - 10%

# Bryn Mawr Needs Analysis: Parent Focus Group Notes

## Introduction

Thanks for taking the time to meet with us today. We are Madeline and Mattana and we work with MPS and Bryn Mawr on various projects around family, student, and staff voice.

The purpose of this conversation is to talk about your experience with Bryn Mawr, your students' experience, and its engagement with families.


<https://tinyurl.com/BrynMawrSOTS>

# Guiding Questions

1. What are some of the strengths you've seen in how Bryn Mawr staff treats students and their families?
  - a. Have you experienced issues or challenges in these areas? How do you think these areas can be improved?
2. Do you feel welcomed and part of the community at Bryn Mawr?
  - a. What makes you feel welcome?
  - b. Is there anything that makes you feel unwelcome?
3. Do you feel like you are listened to as part of the Bryn Mawr community if you have concerns or suggestions?
  - a. How would you prefer to engage with the school community?
4. What kind of school events would you be interested in?
  - a. Are there any community partners you would like to see Bryn Mawr partner with?
5. Have you heard from any other caregivers who do not come to Bryn Mawr events?
  - a. Do you know the reasons why they have not come?
6. Is there anything else you would like to share?



# Title I



**Title I is a federal program** which provides **money to schools and districts** to help them ensure all children have an **equal opportunity to get a high-quality education** and achieve proficiency on our state's academic standards and assessments.



***Title I supports our School Improvement Plan, and the funding we receive helps us reach our goals.***

***Bryn Mawr Elementary** is a schoolwide Title I program, which means all our students are able to benefit from the services we provide with our Title I funding.*

For the 2023-2024 school year, we received **\$385,037** in Title I funding, which makes up **7%** of our school budget.

*We are required to use Title I funding to improve the academic achievement of all students and engage YOU, our families, in that process!*

## How we use our Title I Funding:

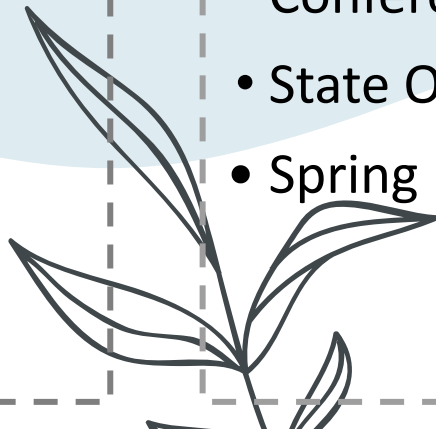
*We are required to use Title I funding to improve the academic achievement of all students and engage YOU, our families, in that process!*

### Curriculum and Instruction Support

- Staffing
  - Classroom staff buy-up
  - Social work time
  - Intervention support staff
  - Family Liaison position
  - Translation support
- Professional Collaboration -  
Extended Time for Planning &  
Translation

### Family Engagement

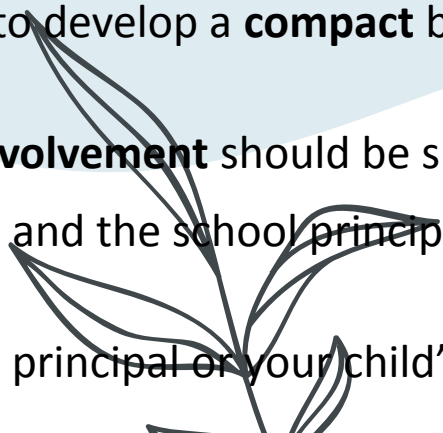
- Supplies for learning and family engagement events
- Conferences
- State Of The Schools Night
- Spring Festival





# As a family member in a Title I School, you have the right to...

- **Request information from the district** about whether your student's teacher meets State licensing approval for the grade and subject being taught, is teaching with a waiver, and/or has certification for the field being taught
- Request information about the qualifications of any paraprofessional providing instruction
- Know how your child's **school is rated** on its state test scores
- Expect **regular communication** with your school in a language that you can understand
- Work with other families and staff to develop a **compact** between our school and our families
- Help plan how **money for family involvement** should be spent
- Work with teachers, other families, and the school principal to develop a **family engagement plan**
- **Ask for a meeting** with your school principal or your child's teacher at any time



# Opportunities for Families to be Involved:

## We want your input on our:

- School Improvement Plan goals and strategies
- Family Engagement Plan
- School-Family Compact

*You can find all these documents on our school website!*

- **Participate in Site Council**
- **Visit** your child's classroom or **volunteer** at our school!
- Talk to your child's teacher about events and issues that may affect your child's work or behavior.

## We'd love to see you at the following school events:

- Family-Teacher **conferences** on: October 17/18th and February 20th
- School **Carnival** - April 30th
- Monthly PTA Meetings - Next meeting on November 14th at 6:00 pm

# School Staff Information



## Administration

Kevin Oldenburg – Principal  
[kevin.oldenburg@mpls.k12.mn.us](mailto:kevin.oldenburg@mpls.k12.mn.us)  
612.668.2500

Elizabeth Johnson – Admin TOSA  
[elizabeth.johnson@mpls.k12.mn.us](mailto:elizabeth.johnson@mpls.k12.mn.us)  
612.668.2500

## School Office Staff

Kathy Stephen – School Secretary  
[kathy.stephen@mpls.k12.mn.us](mailto:kathy.stephen@mpls.k12.mn.us)  
612.668.2500

Geoffrey Brown – Office Assistant  
[geoffrey.brown@mpls.k12.mn.us](mailto:geoffrey.brown@mpls.k12.mn.us)  
612.668.2500

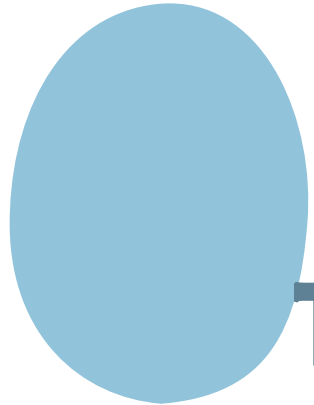
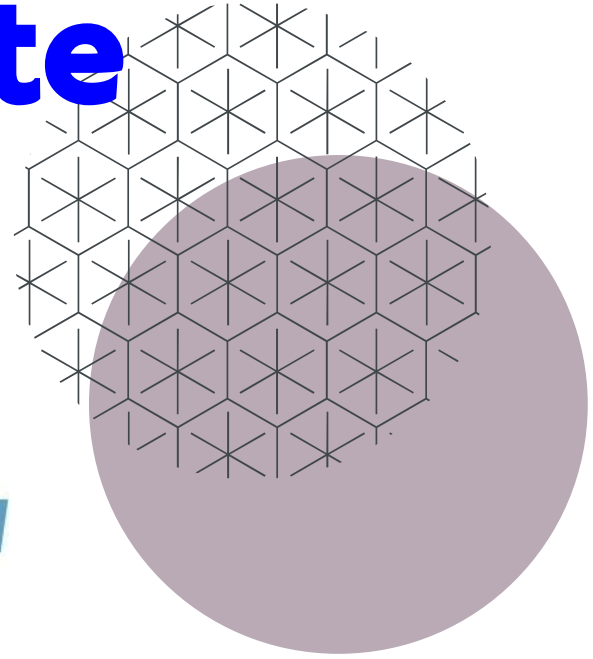
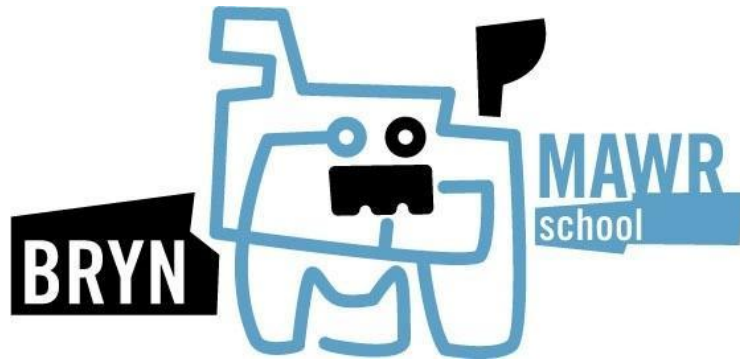
## Family Liaison

Alfreda Riddley – “Ms. Mia”  
[alfreda.riddley@mpls.k12.mn.us](mailto:alfreda.riddley@mpls.k12.mn.us)  
612.668.2500





**We Appreciate  
You!!**



**Thanks for Coming!**