

**Rushton
Elementary School**
6001 W. 52nd St. Mission,
KS

CONSTRUCTION UPDATE TODAY'S DATE 05/24/2024

OWNER: Shawnee Mission School
District

ARCHITECT: incite Design Studio

CM: JE DUNN

CURRENT PROGRESS

- Gym Floor Striping Ongoing
- Area A Casework Installation
- Area D 1st Floor Corridor Flooring
- Continued Sitework on North Side
- Fencing and Landscaping on South side

2 WEEK LOOK AHEAD

- Concrete Polishing
- Front Entrance Sidewalks
- Parking Lot Paving
- Area A Corridor Flooring
- Landscaping on North and East Sides

SHAWNEE MISSION SCHOOL DISTRICT
RUSHTON ELEMENTARY SCHOOL
OPENING FALL 2024



SMSD Rushton Elementary School



**Rushton
Elementary School**
6001 W. 52nd St. Mission,
KS



SE Corner Fencing

== WE EXIST TO ==
ENRICH LIVES
»» THROUGH INSPIRED ««
PEOPLE AND PLACES



Courtyard Landscaping



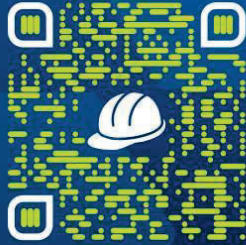
SMSD Rushton Elementary School





BUILDING THE FUTURE

A K-12 CONSTRUCTION EDUCATION INITIATIVE OF JE DUNN



BUILDINGTHEFUTURE.JEDUNN.COM



Gym Floor Striping

OWNER: Shawnee Mission School District

ARCHITECT: incite Design Studio

CM: JE DUNN



Cafeteria Storefront Framing



SMSD Rushton Elementary School



**Rushton
Elementary School**
6001 W. 52nd St. Mission,
KS

CONSTRUCTION UPDATE

TODAY'S DATE
3/15/2024

OWNER: Shawnee Mission School
District

ARCHITECT: incite Design Studio

CM: JE DUNN

CURRENT PROGRESS

- Area A Drywall Finishing
- Area B Ceilings Install
- Kitchen Epoxy Flooring Install
- Gym Equipment & Tectum Install
- Area A Tile & Casework Install
- Exterior Sidewalk Install

2 WEEK LOOK AHEAD

- Area A Painting
- Area B Casework Install
- Topping Slab Install
- Gym Floor Install
- Area D Ceiling Tile Install
- Area D Flooring Install

SHAWNEE MISSION SCHOOL DISTRICT
RUSHTON ELEMENTARY SCHOOL
OPENING FALL 2024



SMSD Rushton Elementary School



Rushton
Elementary School
6001 W. 52nd St. Mission,
KS



Gym Installation Progress

== WE EXIST TO ==
ENRICH LIVES
»» THROUGH INSPIRED ««
PEOPLE AND PLACES



Area C Light Fixture Install



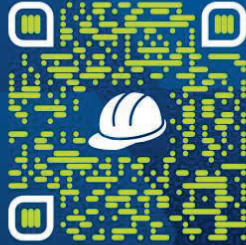
SMSD Rushton Elementary School





BUILDING THE FUTURE

A K-12 CONSTRUCTION EDUCATION INITIATIVE OF JE DUNN



BUILDINGTHEFUTURE.JEDUNN.COM

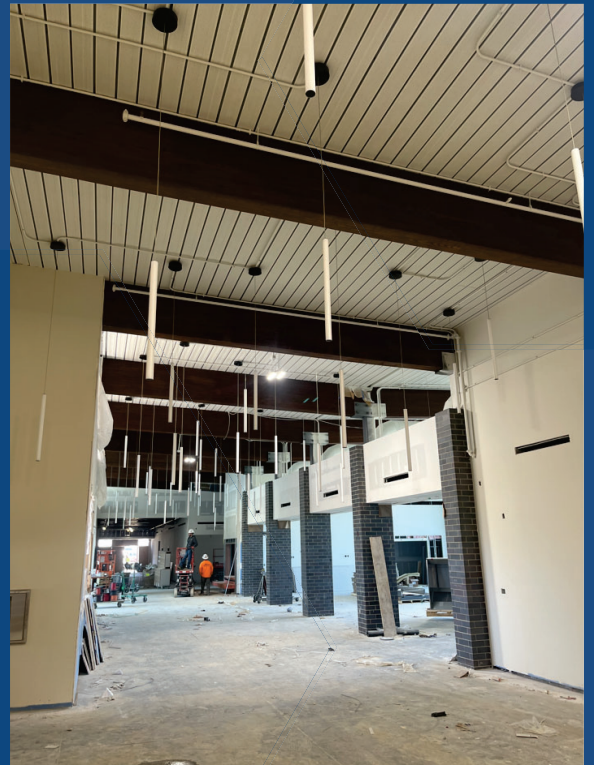


North Sidewalk Installation

OWNER: Shawnee Mission School District

ARCHITECT: incite Design Studio

CM: JE DUNN



Main Corridor Fixture Install



SMSD Rushton Elementary School



**Rushton
Elementary School**
6001 W. 52nd St. Mission,
KS

CONSTRUCTION UPDATE

TODAY'S DATE
3/01/2024

OWNER: Shawnee Mission School District

ARCHITECT: incite Design Studio

CM: JE DUNN

CURRENT PROGRESS

- Area A Drywall Install
- Area A Exterior Window Install
- Area B Painting Ongoing
- Kitchen Epoxy Floor/wall Install
- Elevator Installed
- Area D Ceiling & Light Fixture Install

2 WEEK LOOK AHEAD

- Area A Drywall Finishing and Paint
- Area B Ceiling and Light Fixture Install
- Area C Ceiling and Light fixture Install
- Polished concrete topping slab beginning 3/18
- Area D floor Install beginning 3/18

SHAWNEE MISSION SCHOOL DISTRICT
RUSHTON ELEMENTARY SCHOOL
OPENING FALL 2024



SMSD Rushton Elementary School



**Rushton
Elementary School**
6001 W. 52nd St. Mission,
KS

== WE EXIST TO ==
ENRICH LIVES
»» THROUGH INSPIRED ««
PEOPLE AND PLACES



Area D Ceiling Install



Area C Bathroom Tile Install



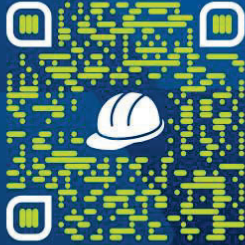
SMSD Rushton Elementary School





BUILDING THE FUTURE

A K-12 CONSTRUCTION EDUCATION INITIATIVE OF JE DUNN



BUILDINGTHEFUTURE.JEDUNN.COM



Media Center Curtain Wall Progress

OWNER: Shawnee Mission School District

ARCHITECT: incite Design Studio

CM: JE DUNN



Outdoor Classroom Progress



SMSD Rushton Elementary School



**Rushton
Elementary School**
6001 W. 52nd St. Mission,
KS

CONSTRUCTION UPDATE

TODAY'S DATE
1/18/2024

OWNER: Shawnee Mission School District

ARCHITECT: incite Design Studio

CM: JE DUNN

CURRENT PROGRESS

- Area D Drywall Finishing
- Area D Rooftop Condition Units have been Turned on
- Area A Framing Ongoing
- Area A Overhead MEP ongoing

2 WEEK LOOK AHEAD

- Area D paint beginning 1/22/2024
- Area C Drywall Install
- Cafeteria Curtain wall Install
- Exterior masonry continuing

SHAWNEE MISSION SCHOOL DISTRICT
RUSHTON ELEMENTARY SCHOOL
OPENING FALL 2024



SMSD Rushton Elementary School



**Rushton
Elementary School**
6001 W. 52nd St. Mission,
KS



Exterior Masonry & Stone Install

== WE EXIST TO ==
ENRICH LIVES
»» THROUGH INSPIRED ««
PEOPLE AND PLACES



Area D level 1 Drywall



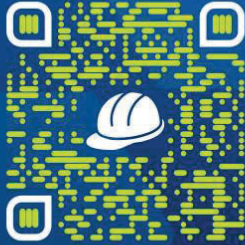
SMSD Rushton Elementary School





BUILDING THE FUTURE

A K-12 CONSTRUCTION EDUCATION INITIATIVE OF JE DUNN



BUILDINGTHEFUTURE.JEDUNN.COM

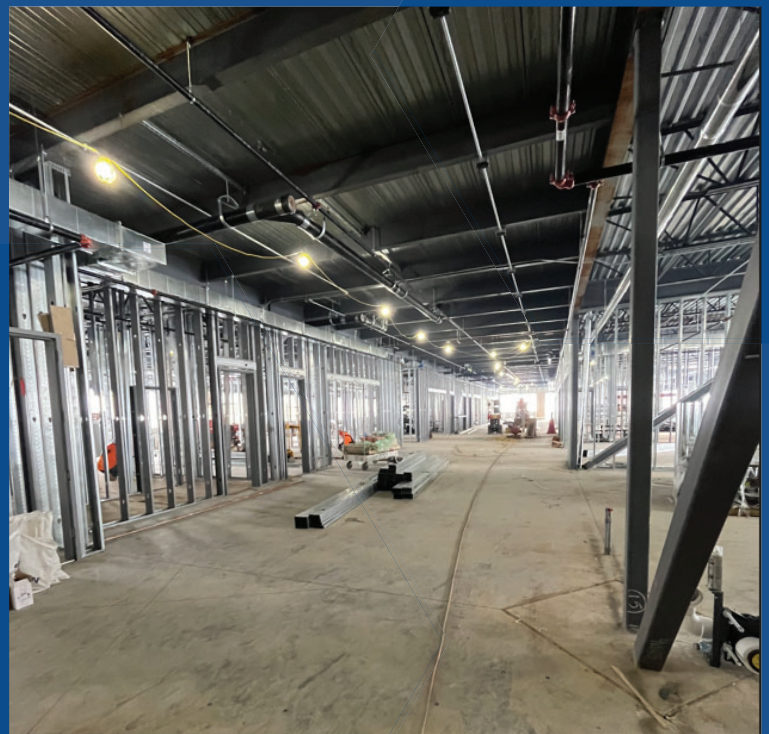


Wachter level 2 Drywall Finishing

OWNER: Shawnee Mission School District

ARCHITECT: incite Design Studio

CM: JE DUNN



Area A Framing & Overhead MEP Progress



SMSD Rushton Elementary School



**Rushton
Elementary School**
6001 W. 52nd St. Mission,
KS

CONSTRUCTION UPDATE

TODAY'S DATE
12/18/2023

OWNER: Shawnee Mission School District

ARCHITECT: incite Design Studio

CM: JE DUNN

CURRENT PROGRESS

- Roof Completion
- Area A Overhead MEP
- Area D/C Exterior Glass Install
- Area B Masonry Install

2 WEEK LOOK AHEAD

- Area A Interior Framing
- Area A Masonry Install
- Turn on HVAC in Area D/C
- Drywall Area D/C

SHAWNEE MISSION SCHOOL DISTRICT
RUSHTON ELEMENTARY SCHOOL
OPENING FALL 2024



SMSD Rushton Elementary School



**Rushton
Elementary School**
6001 W. 52nd St. Mission,
KS



Area D Masonry Completed

== WE EXIST TO ==
ENRICH LIVES
»» THROUGH INSPIRED ««
PEOPLE AND PLACES



Area D Drywall Install start



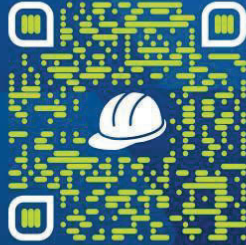
SMSD Rushton Elementary School





BUILDING THE FUTURE

A K-12 CONSTRUCTION EDUCATION INITIATIVE OF JE DUNN



BUILDINGTHEFUTURE.JEDUNN.COM



Area C/B masonry

OWNER: Shawnee Mission School District

ARCHITECT: incite Design Studio

CM: JE DUNN



Area A Overhead MEP



SMSD Rushton Elementary School















**Rushton
Elementary School**
6001 W. 52nd St. Mission,
KS

CONSTRUCTION UPDATE

TODAY'S DATE
9/15/2023

OWNER: Shawnee Mission School District

ARCHITECT: incite Design Studio

CM: JE DUNN

CURRENT PROGRESS

- Approaching completion of Area D roof
- Approaching completion of exterior framing/sheathing
- Area D Overhead MEP
- Begin Masonry and Stone Install

2 WEEK LOOK AHEAD

- Begin area C roof install
- Continue masonry install
- Area D Door Frame Install
- Area D Interior Framing Install

SHAWNEE MISSION SCHOOL DISTRICT
RUSHTON ELEMENTARY SCHOOL
OPENING FALL 2024



SHAWNEE MISSION
SCHOOL DISTRICT

JEDUNN
CONSTRUCTION

ids incite Design Studio
ARCHITECTURAL & INTERIOR DESIGN



SMSD Rushton Elementary School



**Rushton
Elementary School**
6001 W. 52nd St. Mission,
KS



Area D Overhead MEP

== WE EXIST TO ==
ENRICH LIVES
»» THROUGH INSPIRED ««
PEOPLE AND PLACES



Area D Roof Progress



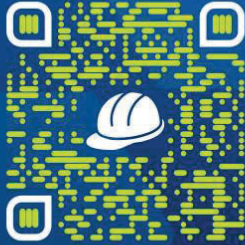
SMSD Rushton Elementary School





BUILDING THE FUTURE

A K-12 CONSTRUCTION EDUCATION INITIATIVE OF JE DUNN



BUILDINGTHEFUTURE.JEDUNN.COM



Area A/B Exterior Framing Progress

OWNER: Shawnee Mission School District

ARCHITECT: incite Design Studio

CM: JE DUNN



Masonry & Stone Progress



SMSD Rushton Elementary School



Hocker Grove Middle School WEEKLY PROGRESS REPORT 09/15/2023



Concrete Bench



Courtyard Sidewalk

This Week: 09/11/23—09/15/23

- Completed Courtyard Concrete & Flatwork
- Completed Storefront Install in Front Office
- Continued MEP Rough-In at Auxiliary Classroom
- Continued Metal Panel Install at Front Entrance
- Continued Storefront Install at Addition

Next Week: 09/18/23—09/22/23

- Complete Storefront Window Install at Addition
- Continue MEP Rough-In at Addition
- Continue Metal Panel Install at Front Entrance
- Begin Painting Steel at Addition



MEP Rough-In at Addition



Addition Storefront Framing

Hocker Grove Middle School WEEKLY PROGRESS REPORT 09/08/2023



Concrete Bench



Courtyard Storefront Window Framing

This Week: 09/04/23—09/08/23

- Completed Courtyard Concrete & Flatwork
- Continued MEP Rough-In at Auxiliary Classroom
- Continued Metal Panel Install at Front Entrance
- Began Storefront Window Install at Addition

Next Week: 09/11/23—09/15/23

- Continue MEP Rough-In at Auxiliary Classroom
- Continue Metal Panel Install at Front Entrance
- Continue Storefront Window Install at Addition
- Begin Storefront Install in Front Office



MEP Rough-In at Addition Ceiling



Addition Storefront Window Framing

**Rushton
Elementary School**
6001 W. 52nd St. Mission,
KS

CONSTRUCTION UPDATE 8.18.23

OWNER: Shawnee Mission School
District

ARCHITECT: incite Design Studio

CM: JE DUNN

CURRENT PROGRESS

- Begin and continue exterior framing in Area D
- Finish install of Area A structural steel
- Pour Gym slab on grade
- Continue roof deck installation in Area A and B
- Begin roof and window blocking in Area D

2 WEEK LOOK AHEAD

- Begin air barrier installation in Area D
- Begin Brick installation in Area D
- Prep for roofing installation in Area D
- Continue exterior framing to Area C

SHAWNEE MISSION SCHOOL DISTRICT
RUSHTON ELEMENTARY SCHOOL
OPENING FALL 2024



SHAWNEE MISSION
SCHOOL DISTRICT

JE DUNN
CONSTRUCTION

incite Design Studio



SMSD Rushton Elementary School



**Rushton
Elementary School**
6001 W. 52nd St. Mission,
KS



Area A Structural Steel progress

== WE EXIST TO ==
ENRICH LIVES
»» THROUGH INSPIRED ««
PEOPLE AND PLACES



Upper level Area D



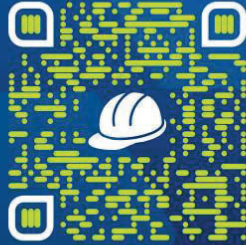
SMSD Rushton Elementary School





BUILDING THE FUTURE

A K-12 CONSTRUCTION EDUCATION INITIATIVE OF JE DUNN



BUILDINGTHEFUTURE.JEDUNN.COM



Gym slab on grade pour

OWNER: Shawnee Mission School District

ARCHITECT: incite Design Studio

CM: JE DUNN



West side of Area D sheathing



SMSD Rushton Elementary School



**Rushton
Elementary School**
6001 W. 52nd St. Mission,
KS

CONSTRUCTION UPDATE 07.21.23

OWNER: Shawnee Mission School
District

ARCHITECT: incite Design Studio

CM: JE DUNN

CURRENT PROGRESS

- Completed structural steel framing in Area D
- Started Area A Structural Steel
- Completed GluLam beam installation
- Completed Area D slab on deck

2 WEEK LOOK AHEAD

- Begin metal stud framing in Area D
- Begin wood blocking and sheathing in Area D
- Continue Structural Steel in Area A
- Begin air barrier in Area D
- Prep for brick installation in Area D
- Continue metal decking installation in Area C & B

SHAWNEE MISSION SCHOOL DISTRICT
RUSHTON ELEMENTARY SCHOOL
OPENING FALL 2024



SHAWNEE MISSION
SCHOOL DISTRICT

JE DUNN
CONSTRUCTION

ids incite Design Studio



SMSD Rushton Elementary School



**Rushton
Elementary School**
6001 W. 52nd St. Mission,
KS



Area D Slab on Deck Preparation

== WE EXIST TO ==
ENRICH LIVES
»» THROUGH INSPIRED ««
PEOPLE AND PLACES



GluLam Beam Install



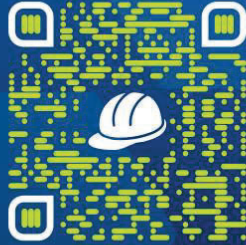
SMSD Rushton Elementary School





BUILDING THE FUTURE

A K-12 CONSTRUCTION EDUCATION INITIATIVE OF JE DUNN



BUILDINGTHEFUTURE.JEDUNN.COM



PHOTO DESCRIPTION & LOCATION

OWNER: Shawnee Mission School District

ARCHITECT: incite Design Studio

CM: JE DUNN



Structural Steel in Area C & D



SMSD Rushton Elementary School



**Rushton
Elementary School**
6001 W. 52nd St. Mission,
KS

CONSTRUCTION UPDATE

TODAY'S DATE
07/07/2023

OWNER: Shawnee Mission School District

ARCHITECT: incite Design Studio

CM: JE DUNN

CURRENT PROGRESS

- Pour north half of Area A
- Continue structural steel install in D/C/B
- Complete MEP underground in Area A

2 WEEK LOOK AHEAD

- Install Glulam beams in Area B
- Pour remaining slab of Area A
- Begin structural steel in Area A
- Begin structural steel framing in Area D
- Prep for slab on deck in Area D

SHAWNEE MISSION SCHOOL DISTRICT
RUSHTON ELEMENTARY SCHOOL
OPENING FALL 2024



SMSD Rushton Elementary School



Rushton
Elementary School
6001 W. 52nd St. Mission,
KS



Slab Pour Area A

== WE EXIST TO ==
ENRICH LIVES
»» THROUGH INSPIRED ««
PEOPLE AND PLACES



Area D Structural Steel (looking west)



SMSD Rushton Elementary School



**Rushton
Elementary School**
6001 W. 52nd St. Mission,
KS



Area C Structural Steel

SAFETY
EVERYONE.
EVERYWHERE.
ALL THE TIME.



Area C/D Structural Steel



SMSD Rushton Elementary School



**Rushton
Elementary School**
6001 W. 52nd St. Mission,
KS

CONSTRUCTION UPDATE

TODAY'S DATE
06/23/2023

OWNER: Shawnee Mission School District

ARCHITECT: incite Design Studio

CM: JE DUNN

CURRENT PROGRESS

- Completed Gym Precast Installation
- Continued Area D and Area C Structural Steel
- Completed All Concrete Footings.
- Began Underground MEP in Area A
- Completed the Last Recessed Slab Pour

2 WEEK LOOK AHEAD

- Continue Structural Steel in Area D and Area C
- Complete MEP Underground in Area A
- Complete the Slab-on-Grade Pours in Area A and Area B
- Begin Underground MEP in the Gym

SHAWNEE MISSION SCHOOL DISTRICT
RUSHTON ELEMENTARY SCHOOL
OPENING FALL 2024



SHAWNEE MISSION
SCHOOL DISTRICT

JEDUNN
CONSTRUCTION

ibc incite Design Studio
CONSTRUCTION MANAGEMENT



SMSD Rushton Elementary School



**Rushton
Elementary School**
6001 W. 52nd St. Mission,
KS



Precast GYM & FEMA Shelter

== WE EXIST TO ==
ENRICH LIVES
»» THROUGH INSPIRED ««
PEOPLE AND PLACES



Area C Structural Steel



SMSD Rushton Elementary School



**Rushton
Elementary School**
6001 W. 52nd St. Mission,
KS



Area D Structural Steel

SAFETY
EVERYONE.
EVERYWHERE.
ALL THE TIME.



Area B Slab-on-Grade Prep.



SMSD Rushton Elementary School



**Rushton
Elementary School**
6001 W. 52nd St. Mission,
KS

CONSTRUCTION UPDATE

TODAY'S DATE
04/26/2024

OWNER: Shawnee Mission School
District

ARCHITECT: incite Design Studio

CM: JE DUNN

CURRENT PROGRESS

- Gym Flooring Installation
- Area A Casework Installation
- Installing Kitchen Equipment
- Continued Sitework in the Courtyard
- Overhead Inspection Areas A, B & C.

2 WEEK LOOK AHEAD

- Area A Ceiling Tile
- Area B Admin Flooring
- Area A Casework Install
- Lower Area D Flooring Install
- Kitchen Equipment Install

SHAWNEE MISSION SCHOOL DISTRICT
RUSHTON ELEMENTARY SCHOOL
OPENING FALL 2024



SMSD Rushton Elementary School



**Rushton
Elementary School**
6001 W. 52nd St. Mission,
KS



Gym Flooring

== WE EXIST TO ==
ENRICH LIVES
»» THROUGH INSPIRED ««
PEOPLE AND PLACES



Stone Tile Wall Monumental Stair



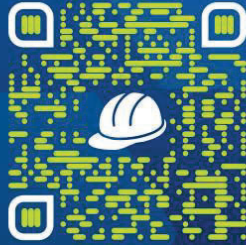
SMSD Rushton Elementary School





BUILDING THE FUTURE

A K-12 CONSTRUCTION EDUCATION INITIATIVE OF JE DUNN



BUILDINGTHEFUTURE.JEDUNN.COM



Kitchen Equipment Install

OWNER: Shawnee Mission School District

ARCHITECT: incite Design Studio

CM: JE DUNN



Media Center AC1



SMSD Rushton Elementary School



**Rushton
Elementary School**
6001 W. 52nd St. Mission,
KS

CONSTRUCTION UPDATE

TODAY'S DATE
05/10/2024

OWNER: Shawnee Mission School
District

ARCHITECT: incite Design Studio

CM: JE DUNN

CURRENT PROGRESS

- Gym Flooring Finish Ongoing
- Area A Casework Installation
- Installing Kitchen Equipment
- Continued Sitework in the Courtyard
- Flooring in Admin and Media Center

2 WEEK LOOK AHEAD

- Area A Flooring
- Asphalt on West and East Sides
- Area A Doors and Hardware
- Gym Floor Striping
- North Side Sidewalk

SHAWNEE MISSION SCHOOL DISTRICT
RUSHTON ELEMENTARY SCHOOL
OPENING FALL 2024



SMSD Rushton Elementary School



**Rushton
Elementary School**
6001 W. 52nd St. Mission,
KS



Admin Flooring

== WE EXIST TO ==
ENRICH LIVES
»» THROUGH INSPIRED ««
PEOPLE AND PLACES



Gym Floor Finsihing



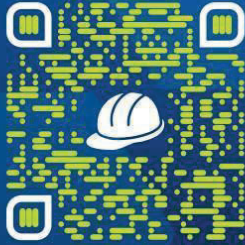
SMSD Rushton Elementary School





BUILDING THE FUTURE

A K-12 CONSTRUCTION EDUCATION INITIATIVE OF JE DUNN



BUILDINGTHEFUTURE.JEDUNN.COM



Media Center Flooring

OWNER: Shawnee Mission School District

ARCHITECT: incite Design Studio

CM: JE DUNN



Bathroom Accessories Installation



SMSD Rushton Elementary School

