



Richard Maghakian
Memorial School
22 Milford St.
Brookline, NH 03033
Phone 603-673-4640
Fax 603-619-3421
Rmms-office@sau41.org

Brookline Bulletin

May 31, 2024
Volume 10, Issue 5



Captain Samuel
Douglass Academy
24 Townsend Hill Rd.
Brookline, NH 03033
Phone 603-821-0439
Fax 603-810-6651
csda-office@sau41.org

Dates to remember

June 10 6th Grade Browne Center
June 11 RMMS 3rd Grade Concert 6 p.m.
June 12 6th Grade Science Fair 6:30—7:30 p.m.
June 13 CSDA Field Day
June 14 RMMS Field Day
June 17 6th Grade Promotion Ceremony
June 18 Last day of school
Half day, times TBD



Food Service Reminder

Please make sure your child's negative lunch balance is paid up.

See page 4

CSDA Happenings

Grade 4: Fourth graders are beginning a short unit in economics. Students will be designing an invention for the Shark Tank activity either individually or with a partner. In math, students began a unit on decimals.

Grade 5: Fifth graders took their spring aimswebPlus testing. In social studies, students will continue to learn about the American Revolution and its aftermath.

Grade 6: The sixth graders are excited to have started learning about Greek Mythology while piloting the new ELA curriculum from Amplify. Some of our first reviews after day one include “engaging,” “fun,” and some say it “feels like a game.”

CSDA Unified Arts: Learning about different careers that are in the field of music.

Have a wonderful weekend,



RMMS Happenings

Pre-K: Preschoolers have been very busy making end-of-year T Shirts, Father's Day gifts, and learning about the farm. They are excited for their field trip next week to Care Farm.

Grade K: Kindergarteners are thrilled to be continuing on with their A-Z Countdown to Summer Break! Please make sure you are checking the calendar daily as they have pajama day and silly sock day to prepare for!

Grade 1: First graders will continue their geometry unit in math. They will review the many word patterns they have learned in Foundations this year.

Grade 2: Second graders will dive into the world of fables, folktales, and fairy tales in reading. They will also be learning how to read, interpret, and create graphs in math.

Grade 3: Third graders are looking forward to finishing up aimswebPlus testing and finalizing their work for their biography speeches while preparing for their Wax Museum event next week!

RMMS Unified Arts: Music classes are enjoying end-of-year music games for all grades! Plus third grade is practicing for its end of the school year concert.

Have a great weekend!

Captain Samuel Douglass Academy
6th Grade Promotion



PLEASE SAVE THE DATE

Monday, June 17, 2024

6:30 -7:30 P.M.





Promotion Ceremony will be held outdoors weather permitted

Come celebrate our 6th grade students' accomplishments and wish
them the best of luck as they move on to the

Hollis—Brookline Middle School!

RMMS June Lunch Menu



| MONDAY | TUESDAY | WEDNESDAY | THURSDAY | FRIDAY |
|--------------------------------------------------------------------------------------------------------------------------------------------------------------------------------------------------------------------------------------------------------------------------------|--------------------------------------------------------------------------------------------------------------------------------------------------------------------------------------------------------------------------------------------------------------------------|---------------------------------------------------------------------------------------------------------------------------------------------------------------------------------------------------------------------------------------------------------------------------------------------------------------------------------|---------------------------------------------------------------------------------------------------------------------------------------------------------------------------------------------------------------------------------------------------------------------------------------|----------------------------------------------------------------------------------------------------------------------------------------------------------------------------------------------------------------------------------------------------------------------------------------------------------------------------------------------------------------------------|
| 3 | 4 | 5 | 6 | 7 |
| <ul style="list-style-type: none"> Cup of Meatballs in Sauce Biscuit Veggies Fruit Choice Cold Entrée Choices <ul style="list-style-type: none"> Sunbutter & Jelly Sandwich w/ Cheese Stick Yogurt Lunch | Homemade Macaroni & Cheese <ul style="list-style-type: none"> Dinner Roll Salad Fruit Choice Cold Entrée Choices <ul style="list-style-type: none"> Sunbutter & Jelly Sandwich w/ Cheese Stick Yogurt Lunch | <ul style="list-style-type: none"> Nacho Bar Deluxe Taco Meat & Cheese Salsa & Sour Cream Fresh Baby Carrots Fruit Choice Cold Entrée Choices <ul style="list-style-type: none"> Sunbutter & Jelly Sandwich w/ Cheese Stick Yogurt Lunch | <ul style="list-style-type: none"> Cheeseburger on a Bun Hamburger on a Bun Veggies Fruit Choice Cold Entrée Choices <ul style="list-style-type: none"> Sunbutter & Jelly Sandwich w/ Cheese Stick Yogurt Lunch | <ul style="list-style-type: none"> Gill's Fresh Cheese Pizza Salad Fruit Choice Cold Entrée Choices <ul style="list-style-type: none"> Sunbutter & Jelly Sandwich w/ Cheese Stick Yogurt Lunch |
| 10 | 11 | 12 | 13 | 14 |
| <ul style="list-style-type: none"> Egg & Cheese Sandwich Fresh Baby Carrots Fruit Choice Cold Entrée Choices <ul style="list-style-type: none"> Sunbutter & Jelly Sandwich w/ Cheese Stick Yogurt Lunch | <ul style="list-style-type: none"> Pasta with Meatsauce Salad Fruit Choice Cold Entrée Choices <ul style="list-style-type: none"> Sunbutter & Jelly Sandwich w/ Cheese Stick Yogurt Lunch | <ul style="list-style-type: none"> Toasty Cheese Sandwich Soup Veggies Choice of Fruit Cold Entrée Choices <ul style="list-style-type: none"> Sunbutter & Jelly Sandwich w/ Cheese Stick Yogurt Lunch | <ul style="list-style-type: none"> Warm Chicken & Cheese Wrap Veggies Choice of Fruit Cold Entrée Choices <ul style="list-style-type: none"> Sunbutter & Jelly Sandwich w/ Cheese Stick Yogurt Lunch | Field Day! <ul style="list-style-type: none"> Ham & Cheese Sandwich Turkey & Cheese Sandwich Sunbutter & Jelly Sandwich Chips Fresh Baby Carrots Choice of Fruit Cold Entrée Choices <ul style="list-style-type: none"> Sunbutter & Jelly Sandwich w/ Cheese Stick Yogurt Lunch |
| 17 | 18 | 19 | 20 | 21 |
| <ul style="list-style-type: none"> Chicken Favorites Veggies Fruit Choice Cold Entrée Choices <ul style="list-style-type: none"> Sunbutter & Jelly Sandwich w/ Cheese Stick Yogurt Lunch | Breakfast Only Served Today | |  | |
| 24 | 25 | 26 | 27 | 28 |
| All Negative Lunch Balances Must Be Paid Off! | |  |  |  |

Milk & Fruit Choices Available With Each Meal

Fruit Choices May Include: Strawberry Cup , Mandarin Oranges , Mixed Fruit , Pineapple Tidbits , Sliced Peaches , Pears , Applesauce , Dried Cranberries , Rasins , Applesauce Cup , Lindy's Fruit Punch Frozen Juice , Lindy's Strawberry Frozen Juice

Menu is Subject to Change

This institution is an equal opportunity provider. Layout & Design © Nutrislice, Inc. Printed on 6/3/2024 at 10:38 am .

CSDA June Lunch Menu



| MONDAY | TUESDAY | WEDNESDAY | THURSDAY | FRIDAY |
|--------------------------------------------------------------------------------------------------------------------------------------------------------------------------------------------------------------------------------------------------------|------------------------------------------------------------------------------------------------------------------------------------------------------------------------------------------------------------------------------------------------------------|--------------------------------------------------------------------------------------------------------------------------------------------------------------------------------------------------------------------------------------------------------------------------------------------------------------------------------------------------------------------|--------------------------------------------------------------------------------------------------------------------------------------------------------------------------------------------------------------------------------------------------------------------------|-------------------------------------------------------------------------------------------------------------------------------------------------------------------------------------------------------------------------------------------------|
| 3 | 4 | 5 | 6 | 7 |
| <ul style="list-style-type: none"> BBQ Pulled Pork on a Bun Oven Baked Krinkle Fries Fruit Choice Cold Entrée Choices Sunbutter & Jelly Sandwich w/ Cheese Stick Yogurt Lunch | <ul style="list-style-type: none"> Pasta with Meatsauce WG Dinner Roll Steamed Carrots Fruit Choice Cold Entrée Choices Sunbutter & Jelly Sandwich w/ Cheese Stick Yogurt Lunch | <ul style="list-style-type: none"> Nacho Bar Deluxe Taco Meat & Cheese Salsa & Sour Cream Seasoned Corn Cukes & Dip Fruit Choice Cold Entrée Choices Sunbutter & Jelly Sandwich w/ Cheese Stick Yogurt Lunch | <ul style="list-style-type: none"> Egg & Cheese Sandwich Crispy Tater Tots Fruit Choice Cold Entrée Choices Sunbutter & Jelly Sandwich w/ Cheese Stick Yogurt Lunch | <ul style="list-style-type: none"> Gill's Fresh Cheese Pizza Salad Fresh Baby Carrots Cold Entrée Choices Sunbutter & Jelly Sandwich w/ Cheese Stick Yogurt Lunch |
| 10 | 11 | 12 | 13 | 14 |
| <ul style="list-style-type: none"> Chicken Favorites WG Dinner Roll Steamed Broccoli Fruit Choice Cold Entrée Choices Sunbutter & Jelly Sandwich w/ Cheese Stick Yogurt Lunch | <ul style="list-style-type: none"> Cheeseburger on a Bun Hamburger on a Bun French Fries Fruit Choice Cold Entrée Choices Sunbutter & Jelly Sandwich w/ Cheese Stick Yogurt Lunch | <ul style="list-style-type: none"> Soup & Sandwich Ham & Cheese Sandwich Turkey & Cheese Sandwich Sunbutter & Jelly Sandwich Hot Tomato Soup Salad Choice of Fruit Cold Entrée Choices Sunbutter & Jelly Sandwich w/ Cheese Stick Yogurt Lunch | <ul style="list-style-type: none"> Field Day! Hot Dog on a Roll Chips Fresh Baby Carrots Watermelon Chunks Cold Entrée Choices Sunbutter & Jelly Sandwich w/ Cheese Stick Yogurt Lunch | <ul style="list-style-type: none"> Waffles Sausage Links Veggies & Dip Choice of Fruit Cold Entrée Choices Sunbutter & Jelly Sandwich w/ Cheese Stick Yogurt Lunch |
| 17 | 18 | 19 | 20 | 21 |
| <ul style="list-style-type: none"> This n' That Day Veggies Fruit Choice Cold Entrée Choices Sunbutter & Jelly Sandwich w/ Cheese Stick Yogurt Lunch | Breakfast Only Served Today | | SUMMER | |
| 24 | 25 | 26 | 27 | 28 |
| All Negative Lunch Balances Must Be Paid Off! | | enjoy your SUMMER | enjoy your SUMMER | enjoy your SUMMER |

Milk & Fruit Choices Available With Each Meal

Fruit Choices May Include: Strawberry Cup , Mandarin Oranges , Mixed Fruit , Pineapple Tidbits , Sliced Peaches , Pears , Applesauce , Dried Cranberries , Rasins , Applesauce Cup , Lindy's Fruit Punch Frozen Juice , Lindy's Strawberry Frozen Juice

Menu is Subject to Change

This institution is an equal opportunity provider. Layout & Design © Nutrislice, Inc. Printed on 5/29/2024 at 7:13 am .

Food Service Reminder

Families, please check <https://www.myschoolbucks.com> for your student lunch account balances.

- Breakfast costs \$1.75.
- Elementary Lunch costs \$2.80.
- Please visit <https://www.sau41.org/administration/food-service> to fill out a free and reduced lunch application. NEW ~ this application can now be filled out online!!
- All balances in lunch accounts – positive and negative - will follow students to the new school year.

Thank you for your attention to this.

Amy Cassidy RD, LD

Director of School Nutrition

amy.cassidy@sau41.org

603-324-5997 ext 3061

CSDA & RMMS HEALTH OFFICE UPDATES
May 31, 2024



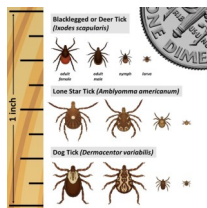
Warm Weather Tips: Stay hydrated

- Send a fresh water bottle each day- water is the best drink; Wear lightweight clothing- layering for the cooler mornings and warmer afternoons; Bring a hat to wear outside to shade face; Place a wet paper towel on forehead or back of neck to cool down.



Seasonal Allergies- Tree Pollen
Keeping Symptoms in Check

Expect one more week of the tree pollen level being very high. If your child is sensitive and experiencing symptoms, please administer medication at home or contact the nurse for forms to provide medication to administer at school. We do not have over the counter oral allergy medication or allergy eye medication at school. After being outside, remind your child to wash their hands and face to remove surface pollen. [More Information here.](#)



Tickfreenh.org <https://tickfreenh.org/> Do a Tick Check each evening. Check along the hairline and at folds of skin, common areas ticks will adhere. If a tick is found, remove it right away. Use tweezers to grasp the tick close to the skin and pull straight out from the skin. Place the tick in a ziplock bag or between a piece of tape. Cleanse the area with soap and water. Watch for symptoms, including a reddened circular area around the tick bite. Contact your doctor to inform of a tick bite and seek advice on the recommended treatment.

Grade 6 Students

A physical exam dated 8/1/23 or later and the Tdap vaccine is due prior to starting 7th Grade at HBMS. Please send this information to Maureen Lorden, RN, CSDA prior to June 13, 2023.



End Hunger 68 Weekend Food Program: provides food for the weekend for your child. Each bag of food provides two breakfasts, two lunches, and three dinners for a child, with some left over to share! This is a program coordinated in Brookline and Hollis. Please let us know if your family could benefit from this program. It is handled confidentially. **Sign up just requires sending an email to your child's school nurse.**

CSDA:
Maureen Lorden, RN
maureen.lorden@sau41.org
Phone: 603-821-0439

RMMS:
Tena Ferenczhalmy,
RN tena.ferenczhalmy@sau41.org
Phone: 603-673-4640

RMMS-Covering/District Float Nurse:
Diana Zoltko, RN
diana.zoltko@sau41.org



HAVE YOU HEARD ABOUT OUR **BROOKLINE FOOD PANTRY?**

Currently accepting donations and supporting families in Brookline and Hollis!

HOW OUR SCHOOLS CAN HELP



Most needed items
for May:

- Muffin and Quick Bread Mix
- Deodorant
- Sponges
- Baked Beans
- Boxed Rice
- Vegetable Oil
- Canned Chicken
- Salt and Pepper
- Wet Dog Food
- Pudding Snack Packs
- Dish Soap
- Shelf Stable Milk

All families welcome- please spread the word to community friends and neighbors.

Thanks to our PTO, you may purchase the most needed items through Amazon:

<https://www.amazon.com/registries/pl/guest-view/11J8079RAHQIX>



**YOUR CONTINUED SUPPORT IS APPRECIATED!
PLEASE KNOW THAT ALL DONATIONS MAKE A
DIFFERENCE IN OUR COMMUNITY.**



Dear Families,

This year's Field Day is going to be on **Friday, June 14th**. The rain date will be **Monday, June 17th**. Field Day is a big event here at RMMS and we're always looking forward to this exciting day.

HELP WANTED!!!

This day cannot be successful without volunteers like you! We appreciate the time that you give. Due to scheduling and streamlining the assignment process, **we are only accepting all day volunteers who have already been approved by SAU 41**. This being said, all volunteer duties are completed by 12:30 p.m.! This year we are asking parents to sign up to volunteer through the [Sign Up Genius](#) app. We will accept the first 40 volunteers to sign up. You will receive your assignment and station directions via email. After signing up to volunteer, look for an email from Steve Martus for more information. Any questions, please contact Mr. Martus at stephen.martus@sau41.org.

Thank you,

The Field Day Committee

[Sign Up Genius](#)

HBHS PERFORMING ARTS PRESENTS:

SOMEWHAT TRUE
THE ~~TRUE~~ TALE
OF ROBINHOOD

BY MARY LYNN DOBSON

DIRECTED BY MATTHEW BARBOSA

TECHNICAL DIRECTION BY DYLAN SILCOX



Tickets



FRIDAY, MAY 31ST @ 7 PM
SATURDAY JUNE 1ST @ 1 PM
SATURDAY JUNE 1ST @ 7 PM

**Brookline Fire
Dept Association**

**PANCAKE
BREAKFAST**

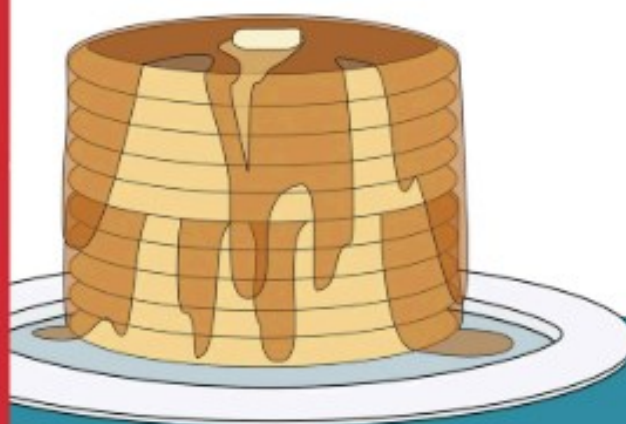


SUNDAY 8-11
June 23rd

Brookline Fire Station
4 Bond St

Menu

pancakes
sausage
bacon
home fries
coffee & OJ



NOT A SCHOOL SPONSORED EVENT

Adults \$10
Over 65 & under 10 \$5
Children under 3 eat free