

# AT HOME DEVICE TIPS

## WHERE TO PUT THE CHROMEBOOK AT HOME



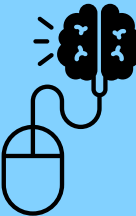
- Decide on a central location to charge the Chromebook each night.
- If there are multiple students at home with Chromebooks, create a charging station with a specific spot for each child.

## SETTING TIME LIMITS



- Set time limits for the device usage at home.
- Some homework assignments may require the Chromebook. For example, 2nd -5th grades have Reflex Math as part of their homework some nights.

## AUP & USAGE



- The NB27 Chromebook is for school use only.
- The AUP (Acceptable Use Policy) is posted on the NB27 webpage. This is good to review as a family.
- Students should “Think before you click!” D27 cannot monitor search engines like Google or YouTube at home.

## FAMILY RULES



- Set family rules for school devices and personal devices. See the attached tips from Common Sense Media.
- Model good device usage in front of your children.
- Decide on a location for the Chromebook to be used. For example, a common area where adults are supervising.
- Limit headphone usage to help monitor safe navigating.

## ADDITIONAL RESOURCES



Check out the NB27 website -> Technology Resources for Parents for more information.