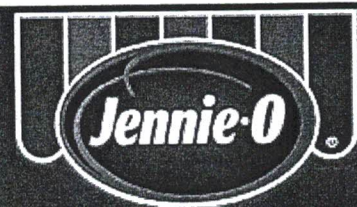


213008 - JENNIE-O Pepperoni Style Seasoned Turkey 15 Slices Per Ounce



Commodity Code: A-534/100124

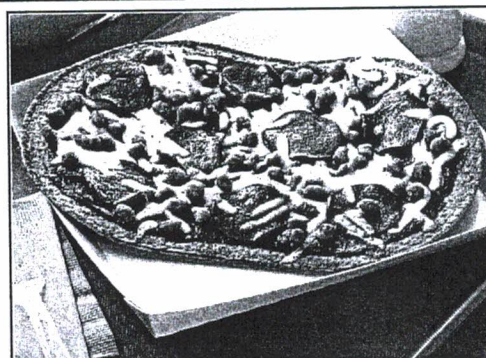
Product Information

Product Features

- Packed 8/2-2.5 lb. packages
- 1.75" diameter slices
- Shipped frozen
- Round shape
- Utilizes dark meat
- Contains No Allergens or Gluten
- Meets the Alliance for a Healthier Generation criteria for protein

Product Attributes

- Great pepperoni flavor for Italian sandwiches and pizza toppings
- Pre-sliced for labor savings, consistency and food safety
- Made with dark turkey delivering a very favorable nutritional profile



LIST OF INGREDIENTS:
PEPPERONI STY SEAS 15 SLC/OZ: Ingredients: Turkey, Pepperoni Seasoning (Corn Syrup, Spices (Mustard), Paprika, Dextrose, Paprika Oleoresin, Garlic Powder, Spice Extractives, Smoke Flavoring), Water, Contains 2% or less Salt, Citric Acid, Dextrose, Carrageenan, Pepper, Sodium Nitrite.

Basic Preparation Instructions*

Keep product frozen at 0°F. or below until ready to use. Defrost product slowly and thoroughly in a refrigerator for 24 hours. Never defrost at room temperature. Upon completion of the thawing process, product should be used within 5 days. Open packages and use sliced meat in various applications

*For preparation by a food preparation establishment only, according to the food code or equivalent

I certify that the above information is true and correct, and that a 1.37 OZ serving of the above product (ready for serving) contain 1.0 OZ of cooked lean meat/meat alternate when prepared according to directions.

I further certify that any VPP used in this product is authorized as an alternate food in the Child Nutrition Programs and its use conforms to Food and Consumer Service Regulations (7CFR part s 210, 225 or 226, Appendix A).

<u>Amy Gronli</u>	Labeling and Nutritional Coordinator, Quality Assurance Dept.
Signature	Title
Amy Gronli	January 11, 2021
Printed Name	Date

Specifications

Ship Container UPC:	90042222213083
Shelf Life:	365 DAYS FROZEN FROM PACK DATE
Pallet Pattern:	7 x 8 = 56
Full Pallet	
Full Pallet Weight:	982.24 LB
Catch Weight?	Y

Master Dimensions

Case Dimensions:	19.56"L x 12.31"W x 6.63"H
Cubic Feet:	0.924 FT
Net Weight:	16.5 LB
Gross Weight:	17.537 LB
Pack:	008/2.00 - 2.5 LB
Servings Per Case:	233

Nutritional Information Per 1.0 OZ. MT./MT. Alternate Serving

Svg Size (oz.)	Calories (Kcal)	Total Fat (g)	Sat. Fat (g)	Trans Fat (g)	Cholest. (mg)	Sodium (mg)	Carbs (g)	Fiber (g)	Total Sugars (g)	Added Sugars (g)	Protein (g)	Vit. D (mg)	Calcium (mg)	Iron (mg)	POTASSIUM (mg)
1.37	60	3	1	0	25	320	1	0	1	1	6	0	0	0.4	90

6" Round Whole Wheat Supreme Pizza

(Topped with Tomato Sauce, Mozzarella Cheese, Sausage, Pepperoni, Red and Green Bell Peppers, Red Onion, Sliced Mushrooms, and Olives)

625WSUP2



Pack Size: 60/6.35oz. portions per case

Child Nutrition Information:

089115 - Each 6.35oz. Serving of 6" Round Whole Wheat Supreme Pizza Provides 2.00oz. Equivalent Meat/Meat Alternate, 2.00oz. Equivalent Grains, 1/4 Cup Red/Orange Vegetable and 1/8 Cup Other/Additional Vegetable for the Child Nutrition Meal Pattern Requirements.

Ingredients:

CRUST: Water, Whole Wheat Flour, Enriched Flour (Malted Barley Flour, Niacin, Reduced Iron, Thiamine Mononitrate, Riboflavin, Folic Acid), Soybean Oil, Contains 2% or less of: Vital Wheat Gluten, Sugar, Salt, Yeast. SAUCE: Tomatoes (Water, Tomato Paste), Contains 1% or Less of: Onion, Salt, Spices, Garlic Powder, Soybean Oil, Xanthan Gum. CHEESE: Low Moisture-Part Skim Mozzarella Cheese (Pasteurized Part Skim Milk, Cultures, Salt, Enzymes). SAUSAGE: Ground Pork (No More Than 30% Fat), Water, Spices, Salt, Dextrose, Garlic Powder. PEPPERONI: Pork and Beef, Salt, Contains 2% or Less of Flavorings, Lactic Acid Starter Culture, Oleoresin of Paprika, Sodium Ascorbate (Vitamin C), Sodium Nitrite, Spices, Sugar, BHA, BHT, Citric Acid. RED BELL PEPPERS: Red Bell Pepper Strips. GREEN BELL PEPPERS: Green Bell Pepper Strips. ONION: Red Onion Strips. MUSHROOMS: Sliced Mushrooms. OLIVES: Ripe Olives, Salt, Ferrous Gluconate Added to Stabilize Color.

Allergens: Wheat and Milk.

May Contain Soy.

Nardone Bros. is a peanut and tree nut-free facility.

Cooking Instructions:

For a softer crust: Preheat oven to 325 F. Place pizza directly on center oven rack. Cook for 7 to 10 minutes or until cheese is melted and crust edges are golden brown.

For a crispy crust: Preheat oven to 325 F. Place pizza on a baking sheet. Cook for 8 to 11 minutes or until cheese is melted and crust edges are golden brown.

Nutrition Facts

Servings per Portion 1

Serving Size 6.35 oz

Amount Per Serving

Calories 391

	% Daily Value*
Total Fat 21 g	33%
Saturated Fat 10 g	50%
Trans Fat 0 g	0
Cholesterol 50 mg	17%
Sodium 750 mg	31%
Potassium 31 mg	1%
Total carbohydrate 30 g	10%
Dietary Fiber 4 g	15%
Sugars 7 g	0
Includes 0g Added Sugars	0
Protein 20 g	0
Vitamin D 0 mcg	0%
Calcium 215 mg	21%
Iron 3 mg	16%
Potassium 31 mg	1%

* The % Daily Value (DV) tells you how much a nutrient in a serving of food contributes to a daily diet. 2,000 calories a day is used for general nutrition advice.

Shipping Info:

Net Weight: 23.81 lbs.
Gross Weight: 25.81 lbs.
Pieces/case: 60
UPC: 8554113088
GTIN: 00085541130881
Dimensions: 17 1/2 x 12 3/4 x 11 1/4
Cube: 1.45
Ti/Hi: 8/6
Shelf Life: 180 days frozen
Country of Origin: 100% U.S.


Nardone Bros.

P I Z Z A

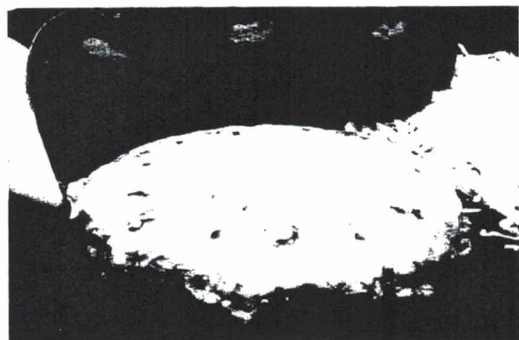
420 New Commerce Blvd. • Wilkes-Barre, PA 18706
1-800-823-5320

All product information is believed to be truthful and accurate.

Last Updated: 9/10/2019

Carol Waudner

6" Round Whole Wheat Cheese Pizza (Topped with Tomato Sauce and Mozzarella Cheese) 625WRM2



Pack Size: 60/5.40oz. portions per case

Child Nutrition Information:

083493 - One 5.40oz. 6" Round Whole Wheat Cheese Pizza Provides 2.00oz. Equivalent Meat Alternate, 2.00oz. Equivalent Grains, and 1/4 Cup of Red/Orange Vegetable for the Child Nutrition Meal Pattern Requirements.

Ingredients:

CRUST: Water, Whole Wheat Flour, Enriched Flour (Malted Barley Flour, Niacin, Reduced Iron, Thiamine Mononitrate, Riboflavin, Folic Acid), Soybean Oil, Contains 2% or less of: Vital Wheat Gluten, Sugar, Salt, Yeast. CHEESE: Low Moisture-Part Skim Mozzarella Cheese (Pasteurized Part Skim Milk, Cheese Culture, Salt, Enzymes). SAUCE: Tomatoes (Water, Tomato Paste), Contains 1% or Less of: Onion, Salt, Spices, Garlic Powder, Soybean Oil, Xanthan Gum.

Allergens: Wheat and Milk.

May Contain Soy.

Nardone Bros. is a peanut and tree nut-free facility.

Cooking Instructions:

For a softer crust: Preheat oven to 325 F. Place pizza on a baking sheet. Cook for 8 to 11 minutes or until cheese is melted and crust edges are golden brown.

For a crispy crust: Preheat oven to 325 F. Place pizza directly on center oven rack. Cook for 7 to 10 minutes or until cheese is melted and crust edges are golden brown.

Nutrition Facts

Servings Per Portion 1

Serving Size 5.40 oz

Amount Per Serving

Calories 321

	% Daily Value*
Total Fat 14 g	22%
Saturated Fat 6 g	32%
Trans Fat 0 g	0
Cholesterol 40 mg	13%
Sodium 524 mg	22%
Total carbohydrate 33 g	11%
Dietary Fiber 3 g	13%
Sugars 6 g	0
Includes 0g Added Sugars	0
Protein 20 g	0
Vitamin D 0 mcg	1%
Calcium 420 mg	42%
Iron 2 mg	13%
Potassium 121 mg	3%

* The % Daily Value (DV) tells you how much a nutrient in a serving of food contributes to a daily diet. 2,000 calories a day is used for general nutrition advice.

Shipping Info:

Net Weight: 20.25 lbs.
Gross Weight: 22.25 lbs.
Pieces/case: 60
UPC: 8554112005
GTIN: 00085541120059
Dimensions: 17 1/2 x 12 3/4 x 11 1/4
Cube: 1.45
Ti/Hi: 8/6
Shelf Life: 180 days frozen
Country of Origin: 100% U.S.

Nardone Bros.
PIZZA

420 New Commerce Blvd. • Wilkes-Barre, PA 18706
1-800-823-5320

All product information is believed to be truthful and accurate.

Last Updated: 2/6/2020

Paul Wiedler

NUTRITION INFORMATION:

Serving Size:	1/8 pizza (150g)	-
Serving Size (grams):	150	-
Serving Size (weight oz):	5.3	-
Eaches/Case:	9	-
Inner Packs/Case:	3	-
Servings/Case:	72	-
Calories:	370	-
Calories From Fat:	150	-
% Calories From Fat:	41%	-
Calories From Saturated Fat:	60	-
% Calories from Saturated Fat:	17%	-
Total Fat:	17	21%
Saturated Fat:	7	34%
Trans Fat:	0	-
Cholesterol:	40	13%
Sodium:	650	28%
Potassium:	489	10%
Total Carbohydrate:	36	13%
Total Dietary Fiber:	4	13%
Sugars:	9	-
Added Sugars:	2	5%
Protein:	20	-
Vitamin A:	72	8%
Vitamin C:	0	0%
Vitamin D:	0	0%
Calcium:	282	20%
Iron:	2.4	15%
Whole Grain:	18	51%

* Percent Daily Values are based on a 2,000 calorie diet.

NUTRITION INFORMATION:

Serving Size:	1/10 pizza (120g)	-
Serving Size (grams):	120	-
Serving Size (weight oz):	4.24	-
Eaches/Case:	9	-
Inner Packs/Case:	3	-
Servings/Case:	90	-
Calories:	300	-
Calories From Fat:	120	-
% Calories From Fat:	39%	-
Calories From Saturated Fat:	45	-
% Calories from Saturated Fat:	15%	-
Total Fat:	13	17%
Saturated Fat:	5	27%
Trans Fat:	0	-
Cholesterol:	30	11%
Sodium:	520	23%
Potassium:	391	8%
Total Carbohydrate:	29	10%
Total Dietary Fiber:	3	10%
Sugars:	7	-
Added Sugars:	2	4%
Protein:	16	-
Vitamin A:	58	6%
Vitamin C:	0	0%
Vitamin D:	0	0%
Calcium:	226	15%
Iron:	1.9	10%
Whole Grain:	15	51%

* Percent Daily Values are based on a 2,000 calorie diet.



HS

BIG DADDY'S™ Primo 16" WG Rising Crust Four Meat Pizza - 78640

Page 1 of 2

PRODUCT DESCRIPTION:

BIG DADDY'S® Primo Four Meat pizza topped with beef, ham, sausage, and pepperoni.

- Adds variety to menu to extend student participation.
- Great tasting, multi-grain whole grain rich crust.
- Four flavorful meats: beef, ham, sausage and pepperoni.

MENU APPLICATIONS:

- Serve with fruit and milk for a complete meal.

CHILD NUTRITION INFORMATION:

095230 -Cut each 42.40 oz. Four Meat Pizza into 8 - 5.30 oz. portions. Each 5.30 oz. portion (by weight) provides 2.00 oz. equivalent meat/meat alternate, 2.00 oz. equivalent grains, and 1/8 cup red/orange vegetable for the Child Nutrition Meal Pattern Requirements. (Use of this logo and statement authorized by the Food and Nutrition Service, USDA 12-16.)

HARD BID SPECIFICATIONS:

BIG DADDY'S™ Primo 16" WG Rising Crust Four Meat Pizza must provide 2.00 oz. equivalent meat/meat alternate, 2.00 oz. of equivalent grains, 1/8 cups red/orange vegetables, Portion to provide a minimum of 340 calories with no more than 19 fat grams. Must contain a minimum of 3 grams of fiber and less than 750 of sodium. Case pack of 72 per case.

CN Label required. Acceptable Brand: BIG DADDY'S™ 78640

PREP INSTRUCTIONS:

COOK BEFORE EATING. Best if cooked from Frozen state. PREHEAT OVEN. FOR FOOD SAFETY AND QUALITY COOK BEFORE EATING TO AN INTERNAL TEMPERATURE OF 160°F. CONVECTION OVEN: 350°F low fan for 15-17 minutes IMPINGEMENT OVEN: 420°F for 6:30-7:00 minutes. NOTE: Rotate product half-way through bake time for convection oven. Due to variances in oven regulators, cooking time and temperature may require adjustments. Pizza is done when cheese begins to brown and is completely melted in the middle. Refrigerate or discard any unused portion.

Cooking Method	Temp	Time	Instructions
Convection Oven	350 °F	15-17 MINUTES	Prepare from frozen state
Impingement Oven	420 °F	6.5-7 MINUTES	Prepare from frozen state

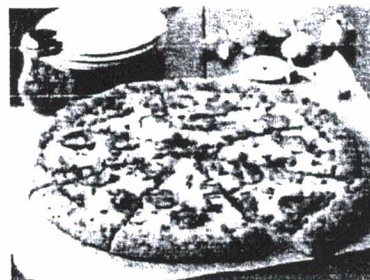
SHIPPING INFO SHELF LIFE:

SHIPPING INFO:

GTIN (Case):	10072180786408
Gross Weight:	28.80
Net Weight:	23.85
Each Weight:	5.30
Cube:	1.82
Dimensions (LxWxH):	16.81 x 16.81 x 11.13
Cases/Pallet:	48
Tie:	6
High:	8
Frozen Shelf Life (days):	270
Refrigerated Shelf Life (days):	0

ALLERGENS:

Contains
Milk or its Derivatives, Wheat or its Derivatives, and Soy or its Derivatives.



INGREDIENTS:

INGREDIENTS: CRUST: WHOLE GRAIN BLEND (WHITE WHOLE WHEAT FLOUR, WHOLE GRAIN YELLOW CORN FLOUR, BROWN RICE FLOUR, WHOLE GRAIN OAT FLOUR), NONFAT MILK, ENRICHED FLOUR (WHEAT FLOUR, MALTED BARLEY FLOUR, NIACIN, REDUCED IRON, THIAMINE MONONITRATE, RIBOFLAVIN, FOLIC ACID), WATER, YEAST, VEGETABLE OIL (SOYBEAN AND/OR CANOLA OIL), DOUGH CONDITIONER (ENZYMES, CONTAINS ONE OR MORE OF THE FOLLOWING: DATEM, CALCIUM CARBONATE, WHEAT GLUTEN, GUAR GUM, ASCORBIC ACID, CHERRY POWDER), SUGAR, CONTAINS 2% OR LESS OF: HYDROGENATED SOYBEAN OIL, PARMESAN CHEESE (PART SKIM MILK, CHEESE CULTURES, SALT, ENZYMES), SEA SALT, DEXTROSE, SPICE, SALT, SOY LECITHIN, NATURAL FLAVOR, WHEAT STARCH. TOPPINGS: LOW MOISTURE PART SKIM MOZZARELLA CHEESE (PART SKIM MILK, CHEESE CULTURES, SALT, ENZYMES), FAT REDUCED PEPPERONI (PORK, BEEF, WATER, TEXTURED VEGETABLE PROTEIN PRODUCT* [SOY PROTEIN CONCENTRATE, ZINC OXIDE, NIACINAMIDE, FERROUS SULFATE, COPPER GLUCONATE, VITAMIN A PALMITATE, CALCIUM PANTOTHENATE, THIAMINE MONONITRATE (B1), PYRIDOXINE HYDROCHLORIDE (B6), RIBOFLAVIN (B2), AND CYANOCOBALAMIN (B12)], SALT, LESS THAN 2% OF SPICES, DEXTROSE, LACTIC ACID STARTER CULTURE, OLEORESIN OF PAPRIKA, FLAVORING, SODIUM NITRITE, BHA, BHT, CITRIC ACID. *INGREDIENT NOT IN REGULAR PEPPERONI), COOKED BEEF PATTY TOPPING (HAMBURGER [GROUND BEEF (NOT MORE THAN 30% FAT), SEASONING (SALT, GROUND BLACK PEPPER, WHOLE ANISE)], WATER, SOY PROTEIN CONCENTRATE, TEXTURED VEGETABLE PROTEIN [SOY FLOUR, SALT]), FULLY COOKED DICED SMOKED HAM WITH NATURAL JUICES (CURED WITH WATER, SALT, DEXTROSE, SODIUM PHOSPHATE, SODIUM ERYTHORBATE, SODIUM NITRITE), COOKED TURKEY PIZZA TOPPING (TURKEY BREAKFAST SAUSAGE [MECHANICALLY SEPARATED TURKEY, SEASONING (SALT, NATURAL FLAVOR, DEXTROSE, SUGAR, CITRIC ACID, BHA, BHT), WATER], TEXTURED VEGETABLE PROTEIN [SOY FLOUR, CARAMEL COLOR, ZINC OXIDE, NIACINAMIDE, FERROUS SULFATE, COPPER GLUCONATE, VITAMIN A PALMITATE, CALCIUM PANTOTHENATE, THIAMINE MONONITRATE, PYRIDOXINE HYDROCHLORIDE, RIBOFLAVIN, CYANOCOBALAMIN], WATER), SAUCE: TOMATOES (WATER, TOMATO PASTE [NOT LESS THAN 28% SOLUBLE SOLIDS]), CONTAINS 2% OR LESS OF: MODIFIED FOOD STARCH, PARMESAN CHEESE (PART SKIM MILK, CHEESE CULTURES, SALT, ENZYMES), SUGAR, DEXTROSE, SALT, DRIED GARLIC, SPICE, DRIED ONION, DEHYDRATED ROMANO CHEESE (SHEEP'S AND COW'S MILK, CHEESE CULTURES, SALT, ENZYMES), PAPRIKA, CITRIC ACID.

Information contained in this document is believed to be accurate and offered in good faith for the benefit of the customer. Nutrition data is calculated and offered for information purposes; some variation can occur depending on several factors. This document may contain proprietary confidential, trade secret or privileged information. Any unauthorized review, use, disclosure or distribution is prohibited and may be a violation of law.



NUTRITION INFORMATION:

Serving Size:	1/8 Pizza (145g)	-
Serving Size (grams):	145	-
Serving Size (weight oz):	5.13	-
Eaches/Case:	9	-
Inner Packs/Case:	3	-
Servings/Case:	72	-
Calories:	360	-
Calories From Fat:	140	-
Calories From Saturated Fat:	70	-
Total Fat:	16	21%
Saturated Fat:	8	42%
Trans Fat:	0	-
Cholesterol:	40	14%
Sodium:	490	21%
Potassium:	475	10%
Total Carbohydrate:	35	13%
Total Dietary Fiber:	4	13%
Sugars:	6	-
Protein:	18	-
Vitamin A:	91	10%
Vitamin C:	0	0%
Calcium:	383	30%
Iron:	2	10%
Whole Grain:	18	52%

NUTRITION INFORMATION:

Serving Size:	1/10 Pizza (116g)	-
Serving Size (grams):	116	-
Serving Size (weight oz):	4.1	-
Eaches/Case:	9	-
Inner Packs/Case:	3	-
Servings/Case:	90	-
Calories:	290	-
Calories From Fat:	120	-
Calories From Saturated Fat:	60	-
Total Fat:	13	17%
Saturated Fat:	7	33%
Trans Fat:	0	-
Cholesterol:	35	11%
Sodium:	390	17%
Potassium:	379	8%
Total Carbohydrate:	28	10%
Total Dietary Fiber:	3	11%
Sugars:	5	-
Protein:	15	-
Vitamin A:	72	8%
Vitamin C:	0	0%
Calcium:	306	25%
Iron:	1.6	10%
Whole Grain:	14	52%

* Percent Daily Values are based on a 2,000 calorie diet.

* Percent Daily Values are based on a 2,000 calorie diet.



Karen Wilder, RD, MPH, LD
 Sr Director, Scientific & Regulatory Affairs

HS

BIG DADDY'S® Primo 16" WG Par-Baked Crust Four Cheese Pizza - 68591

Page 1 of 2

PRODUCT DESCRIPTION:

BIG DADDY'S® Primo Par-Baked Cheese Pizza is made with premium quality ingredients including our signature sauce made with vine-ripened tomatoes and topped with a cheese blend of mozzarella, Parmesan, provolone, and white cheddar. The Parmesan, breadcrumb and herb coating on top of the pizza adds great flavor.

- Great flavor provides an easy transition to whole grain pizza.
- Multi-cheese blend adds additional flavor.
- Crust is naturally yeast-leavened, par-baked to ensure consistent quality every time.
- Preservative-free crust, no certified artificial colors, no artificial flavors, no MSG.

MENU APPLICATIONS:

- Serve with fruit and milk for a complete meal.

CHILD NUTRITION INFORMATION:

095013 -Cut each 41.05 oz. Four Cheese Pizza into 8 - 5.13 oz. portions. Each 5.13 oz. portion (by weight) provides 2.00 oz. equivalent meat alternate, 2.00 oz. equivalent grains, and 1/8 cup red/orange vegetable for the Child Nutrition Meal Pattern Requirements. (Use of this logo and statement authorized by the Food and Nutrition Service, USDA 08-16.)

HARD BID SPECIFICATIONS:

BIG DADDY'S® Primo 16" WG Par-Baked Crust Four Cheese Pizza must provide 2.00 oz. equivalent meat/meat alternate, 2.00 oz. of equivalent grains, 1/8 cups red/orange vegetables. Portion to provide a minimum of 330 calories with no more than 18 fat grams. Must contain a minimum of 3 grams of fiber and less than 590 of sodium. Case pack of 72 per case.

CN Label required. Acceptable Brand: BIG DADDY'S® 68591

PREP INSTRUCTIONS:

COOK BEFORE EATING. Best if cooked from frozen state. PREHEAT OVEN, FOR FOOD SAFETY AND QUALITY COOK BEFORE EATING TO AN INTERNAL TEMPERATURE OF 160°F. CONVECTION OVEN: 350°F high fan for 12-15 minutes. IMPINGEMENT OVEN: Pre-heat at 400°F and bake for 7.5 - 8.5 minutes. NOTE: Rotate product half-way through bake time in convection oven. Due to variances in oven regulators, cooking time and temperature may require adjustments. Pizza is done when cheese begins to brown and is completely melted in the middle. Refrigerate or discard any unused portion.

Cooking Method	Temp	Time	Instructions
Convection Oven	350 °F		Prepare from frozen state
Impingement Oven	400 °F		

SHIPPING INFO / SHELF LIFE:

SHIPPING INFO:

GTIN (Case):	10072180685916
Gross Weight:	25.69
Net Weight:	23.091
Each Weight:	5.13
Cube:	1.82
Dimensions (LxWxH):	16.81 x 16.81 x 11.13
Cases/Pallet:	48
Tie:	6
High:	8
SHELF LIFE:	300

ALLERGENS:

Contains
Milk or its Derivatives, Wheat or its
Derivatives, and Soy or its Derivatives.



INGREDIENTS:

INGREDIENTS: CRUST: WHITE WHOLE WHEAT FLOUR, WATER, ENRICHED FLOUR (WHEAT FLOUR, MALTED BARLEY FLOUR, NIACIN, REDUCED IRON, THIAMINE MONONITRATE, RIBOFLAVIN, FOLIC ACID), NONFAT MILK, YEAST, VEGETABLE OIL (SOYBEAN AND/OR CANOLA OIL). CONTAINS 2% OR LESS OF: SUGAR, SEA SALT, WHEAT GLUTEN, GUAR GUM, MONO- AND DIGLYCERIDES, SOY FLOUR, SODIUM STEAROYL LACTYLATE, L-CYSTEINE, ENZYMES. TOPPINGS: LOW MOISTURE PART SKIM MOZZARELLA AND PARMESAN CHEESES (CULTURED PASTEURIZED PART SKIM MILK, SALT, ENZYMES), LOW MOISTURE MOZZARELLA, PROVOLONE AND WHITE CHEDDAR CHEESES (CULTURED PASTEURIZED MILK, SALT, ENZYMES), SPICE. SAUCE: TOMATOES (WATER, TOMATO PASTE [NOT LESS THAN 28% SOLUBLE SOLIDS]), MODIFIED FOOD STARCH, CONTAINS 2% OR LESS OF: SEA SALT, PARMESAN CHEESE (CULTURED PASTEURIZED PART SKIM MILK, SALT, ENZYMES), MALTODEXTRIN, SPICE, PAPRIKA, DRIED GARLIC, CITRIC ACID, DRIED ONION.



Karen Wilder

Karen Wilder, RD, MPH, LD
Sr Director, Scientific & Regulatory Affairs

NUTRITION INFORMATION:

Serving Size:	1/8 Pizza (148g)	-
Serving Size (grams):	148	-
Serving Size (weight oz):	5.21	-
Eaches/Case:	9	-
Inner Packs/Case:	3	-
Servings/Case:	72	-
Calories:	390	-
Calories From Fat:	170	-
% Calories From Fat:	43%	-
Calories From Saturated Fat:	60	-
% Calories from Saturated Fat:	16%	-
Total Fat:	19	24%
Saturated Fat:	7	37%
Trans Fat:	0	-
Cholesterol:	45	15%
Sodium:	750	32%
Potassium:	386	8%
Total Carbohydrate:	35	13%
Total Dietary Fiber:	3	11%
Sugars:	8	-
Added Sugars:	2	4%
Protein:	20	-
Vitamin A:	75	8%
Vitamin C:	0	0%
Vitamin D:	0	0%
Calcium:	320	25%
Iron:	2.2	10%
Whole Grain:	18	51%

* Percent Daily Values are based on a 2,000 calorie diet.

NUTRITION INFORMATION:

Serving Size:	1/10 Pizza (118g)	-
Serving Size (grams):	118	-
Serving Size (weight oz):	4.17	-
Eaches/Case:	9	-
Inner Packs/Case:	3	-
Servings/Case:	90	-
Calories:	310	-
Calories From Fat:	140	-
% Calories From Fat:	43%	-
Calories From Saturated Fat:	50	-
% Calories from Saturated Fat:	17%	-
Total Fat:	15	20%
Saturated Fat:	6	29%
Trans Fat:	0	-
Cholesterol:	35	12%
Sodium:	600	26%
Potassium:	309	6%
Total Carbohydrate:	28	10%
Total Dietary Fiber:	2	9%
Sugars:	6	-
Added Sugars:	2	3%
Protein:	16	-
Vitamin A:	60	6%
Vitamin C:	0	0%
Vitamin D:	0	0%
Calcium:	256	20%
Iron:	1.7	10%
Whole Grain:	15	51%

* Percent Daily Values are based on a 2,000 calorie diet.



PRODUCT DESCRIPTION:

BIG DADDY'S® Primo Buffalo Chicken Pizza combines Frank's® RedHot® Sauce and Ranch for a unique, on-trend variety students will love! Topped with seasoned chicken and a blend of mozzarella and Cheddar cheese.

- Great flavor provides an easy transition to whole grain pizza.
- Parmesan, parsley and breadcrumb-crust topping adds crunch and flavor.
- Offer new variety of pizza to increase participation.

MENU APPLICATIONS:

- Serve with fruit and milk for a complete meal.
- Offer buffalo sauce and ranch on the side to allow further customization and added spice.

CHILD NUTRITION INFORMATION:

095227 -Cut each 41.70 oz. Buffalo Style Chicken Pizza into 8 - 5.21 oz. portions. Each 5.21 oz. portion (by weight) provides 2.00 oz. equivalent meat/meat alternate and 2.00 oz. equivalent grains for the Child Nutrition Meal Pattern Requirements. (Use of this logo and statement authorized by the Food and Nutrition Service, USDA 12-16.)

HARD BID SPECIFICATIONS:

BIG DADDY'S™ Primo 16" WG Rising Crust Buffalo Chicken Pizza must provide 2.00 oz. equivalent meat/meat alternate, 2.00 oz. of equivalent grains. Portion to provide a minimum of 360 calories with no more than 21 fat grams. Must contain a minimum of 2 grams of fiber and less than 850 of sodium. Case pack of 72 per case.

CN Label required. Acceptable Brand: BIG DADDY'S™ 78639

PREP INSTRUCTIONS:

COOK BEFORE EATING. Best if cooked from Frozen state. PREHEAT OVEN. FOR FOOD SAFETY AND QUALITY COOK BEFORE EATING TO AN INTERNAL TEMPERATURE OF 165°F. CONVECTION OVEN: 350°F low fan for 14-17 minutes IMPINGEMENT OVEN: 420°F for 6-7 minutes. NOTE: Rotate product half-way through bake time for convection oven. Due to variances in oven regulators, cooking time and temperature may require adjustments. Pizza is done when cheese begins to brown and is completely melted in the middle. Refrigerate or discard any unused portion.

Cooking Method	Temp	Time	Instructions
Convection Oven	350 °F	14-17 MINUTES	Prepare from frozen state
Impingement Oven	420 °F	6-7 MINUTES	Prepare from frozen state

SHIPPING INFO / SHELF LIFE:

SHIPPING INFO:

GTIN (Case):	10072180786392
Gross Weight:	26.45
Net Weight:	23.456
Each Weight:	5.21
Cube:	1.82
Dimensions (LxWxH):	16.81 x 16.81 x 11.13
Cases/Pallet:	48
Tie:	6
High:	8
Frozen Shelf Life (days):	270
Refrigerated Shelf Life (days):	0

ALLERGENS:

Contains
Milk or its Derivatives, Wheat or its Derivatives, and Soy or its Derivatives.



INGREDIENTS:

INGREDIENTS: CRUST: WHOLE GRAIN BLEND (WHITE WHOLE WHEAT FLOUR, WHOLE GRAIN YELLOW CORN FLOUR, BROWN RICE FLOUR, WHOLE GRAIN OAT FLOUR), NONFAT MILK, ENRICHED FLOUR (WHEAT FLOUR, MALTED BARLEY FLOUR, NIACIN, REDUCED IRON, THIAMINE MONONITRATE, RIBOFLAVIN, FOLIC ACID), WATER, YEAST, VEGETABLE OIL (SOYBEAN AND/OR CANOLA OIL), SUGAR, WHEAT GLUTEN, CONTAINS 2% OR LESS OF: HYDROGENATED SOYBEAN OIL, PARMESAN CHEESE (CULTURED PASTEURIZED PART SKIM MILK, SALT, ENZYMES), SEA SALT, DATEM, DEXTROSE, GUAR GUM, SPICE, SALT, SOY LECITHIN, NATURAL FLAVOR, ASCORBIC ACID, WHEAT STARCH, ENZYMES. TOPPINGS: LOW MOISTURE PART SKIM MOZZARELLA CHEESE (CULTURED PASTEURIZED PART SKIM MILK, SALT, ENZYMES), COOKED DICED WHITE CHICKEN MEAT (WHITE CHICKEN MEAT, WATER, MODIFIED FOOD STARCH, PAPRIKA, SALT, SODIUM PHOSPHATE, DEHYDRATED ONION, DEHYDRATED GARLIC, BLACK PEPPER, GROUND CELERY), CHEDDAR CHEESE (CULTURED PASTEURIZED MILK, SALT, ENZYMES, ANNATTO [COLOR]). SAUCE: BUFFALO SAUCE (VINEGAR, AGED CAYENNE RED PEPPERS, SALT, WATER, MODIFIED FOOD STARCH, CANOLA OIL, PAPRIKA, CARROT FIBER, XANTHAN GUM, NATURAL FLAVOR, GARLIC POWDER), RANCH DRESSING (SOYBEAN OIL, WATER, VINEGAR, BUTTERMILK SOLIDS, CONTAINS LESS THAN 2% OF: SALT, SUGAR, LEMON JUICE CONCENTRATE, GARLIC, NATURAL FLAVOR, PEA PROTEIN, ONION, MODIFIED FOOD STARCH, XANTHAN GUM, POTASSIUM SORBATE, SORBIC ACID AND CALCIUM DISODIUM EDTA [PRESERVATIVES], SPICE, CREAM, TITANIUM DIOXIDE, BUTTERMILK, GREEN ONIONS, NONFAT MILK).



Tie:	6
High:	8
Frozen Shelf Life (days):	270
Refrigerated Shelf Life (days):	0

NUTRITION INFORMATION:

Serving Size:	1/8 Pizza (147g)	-
Serving Size (grams):	147	-
Serving Size (weight oz):	5.18	-
Eaches/Case:	9	-
Inner Packs/Case:	3	-
Servings/Case:	72	-
Calories:	360	-
Calories From Fat:	140	-
% Calories From Fat:	40%	-
Calories From Saturated Fat:	60	-
% Calories from Saturated Fat:	17%	-
Total Fat:	16	20%
Saturated Fat:	7	37%
Trans Fat:	0	-
Cholesterol:	35	12%
Sodium:	490	21%
Potassium:	433	10%
Total Carbohydrate:	35	13%
Total Dietary Fiber:	3	12%
Sugars:	9	-
Added Sugars:	2	4%
Protein:	21	-
Vitamin A:	93	10%
Vitamin C:	0	0%
Vitamin D:	0	0%
Calcium:	441	35%
Iron:	2.1	10%
Whole Grain:	18	51%

* Percent Daily Values are based on a 2,000 calorie diet.

Information contained in this document is believed to be accurate and offered in good faith for the benefit of the customer. Nutrition data is calculated and offered for information purposes; some variation can occur depending on several factors. This document may contain proprietary confidential, trade secret or privileged information. Any unauthorized review, use, disclosure or distribution is prohibited and may be a violation of law.



PRODUCT DESCRIPTION:

BIG DADDY'S® Primo Four Cheese Pizza combines mozzarella, Provolone, Cheddar and Parmesan for a unique, on-trend variety students will love! The Parmesan, breadcrumb and herb coating on the outside of the crust adds crunch and great flavor.

- Great flavor provides an easy transition to whole grain pizza.
- Unique crust topping provides crunch and flavor to the crust.
- Offer new, on-trend pizza to keep the menu exciting!
- Multi-cheese blend adds additional flavor.
- Pre-sliced into 8 equal servings.

MENU APPLICATIONS:

- Serve with fruit and milk for a complete meal.

CHILD NUTRITION INFORMATION:

095228 -Each 5.18 oz. portion of Cheese Pizza provides 2.00 oz. equivalent meat alternate, 2.00 oz. equivalent grains, and 1/8 cup red/orange vegetable for the Child Nutrition Meal Pattern Requirements. (Use of this logo and statement authorized by the Food and Nutrition Service, USDA 12-16.)

HARD BID SPECIFICATIONS:

BIG DADDY'S™ Primo 16" WG Pre-Sliced Rising Crust Four Cheese Pizza - 8-Cut must provide 2.00 oz. equivalent meat/meat alternate, 2.00 oz. of equivalent grains, 1/8 cups red/orange vegetables, Portion to provide a minimum of 330 calories with no more than 18 fat grams. Must contain a minimum of 2 grams of fiber and less than 590 of sodium. Case pack of 72 per case.

CN Label required. Acceptable Brand: BIG DADDY'S™ 78653

PREP INSTRUCTIONS:

COOK BEFORE EATING. Best if cooked from Frozen state. PREHEAT OVEN. FOR FOOD SAFETY AND QUALITY COOK BEFORE EATING TO AN INTERNAL TEMPERATURE OF 160°F. CONVECTION OVEN: Place 1.5 pizza on a tray. Bake at 350°F for 14-17 minutes, High Fan. Rotate product halfway thru bake cycle. IMPINGEMENT OVEN: Load 1 whole pre-sliced pizza. Bake at 420°F for 6-8 minutes. CONVENTIONAL OVEN: SINGLE SLICE 1. Preheat oven to 400°F. 2. Separate one slice from frozen pizza and place on baking sheet or pizza pan. 3. Bake for 14 to 16 minutes. Whole Pizza 1. Remove frozen pizza from overwrap and place on lightly oiled aluminum foil. 2. Place pizza and foil on middle oven rack. 3. Bake for 30 to 32 minutes. Pizza is done when all cheese is melted. NOTE: Due to variances in oven regulators, cooking time and temperature may require adjustments. Pizza is done when cheese begins to brown and is completely melted in the middle. Refrigerate or discard any unused portion.

Cooking Method	Temp	Time	Instructions
Convection Oven	350 °F	14-17 MINUTES	Prepare from frozen state
Impingement Oven	420 °F	6-8 MINUTES	Prepare from frozen state
Conventional Oven	400 °F	14 - 16 MINUTES	Prepare from frozen state
Conventional Oven	400 °F	30 - 32 MINUTES	Prepare from frozen state

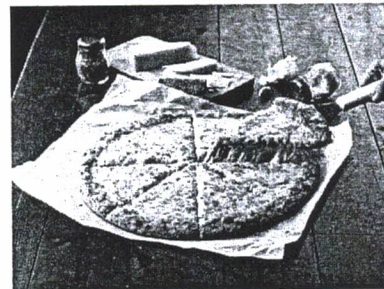
SHIPPING INFO / SHELF LIFE:

SHIPPING INFO:

GTIN (Case):	10072180786538
Gross Weight:	26.95
Net Weight:	23.344
Each Weight:	5.18
Cube:	1.82
Dimensions (LxWxH):	16.81 x 16.81 x 11.13
Cases/Pallet:	48

ALLERGENS:

Contains
Milk or its Derivatives, Wheat or its
Derivatives, and Soy or its Derivatives.



INGREDIENTS:

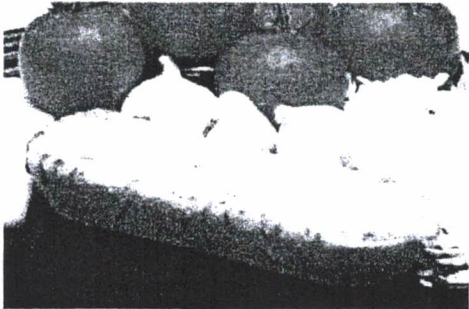
INGREDIENTS: CRUST: WHOLE GRAIN BLEND (WHITE WHOLE WHEAT FLOUR, WHOLE GRAIN YELLOW CORN FLOUR, BROWN RICE FLOUR, WHOLE GRAIN OAT FLOUR), NONFAT MILK, ENRICHED FLOUR (WHEAT FLOUR, MALTED BARLEY FLOUR, NIACIN, REDUCED IRON, THIAMINE MONONITRATE, RIBOFLAVIN, FOLIC ACID), WATER, YEAST, VEGETABLE OIL (SOYBEAN AND/OR CANOLA OIL), SUGAR, WHEAT GLUTEN, CONTAINS 2% OR LESS OF: HYDROGENATED SOYBEAN OIL, PARMESAN CHEESE (CULTURED PASTEURIZED PART SKIM MILK, SALT, ENZYMES), SEA SALT, DATEM, DEXTROSE, GUAR GUM, SPICE, SALT, SOY LECITHIN, NATURAL FLAVOR, ASCORBIC ACID, WHEAT STARCH, ENZYMES. TOPPINGS: LOW MOISTURE PART SKIM MOZZARELLA AND PARMESAN CHEESES (CULTURED PASTEURIZED PART SKIM MILK, SALT, ENZYMES), LITE MOZZARELLA CHEESE (SKIM MILK, CHEESE CULTURES, SALT, MODIFIED FOOD STARCH*, ENZYMES, VITAMIN A PALMITATE)*INGREDIENTS NOT IN REGULAR MOZZARELLA CHEESE, PROVOLONE AND WHITE CHEDDAR CHEESES (CULTURED PASTEURIZED MILK, SALT, ENZYMES), SPICE. SAUCE: TOMATOES (WATER, TOMATO PASTE [NOT LESS THAN 28% SOLUBLE SOLIDS]), CONTAINS 2% OR LESS OF: MODIFIED FOOD STARCH, PARMESAN CHEESE (CULTURED PASTEURIZED PART SKIM MILK, SALT, ENZYMES), SUGAR, DEXTROSE, SALT, DRIED GARLIC, SPICE, DRIED ONION, DEHYDRATED ROMANO CHEESE (CULTURED PASTEURIZED SHEEP'S AND COW'S MILK, SALT, ENZYMES), PAPRIKA, CITRIC ACID.

Information contained in this document is believed to be accurate and offered in good faith for the benefit of the customer. Nutrition data is calculated and offered for information purposes; some variation can occur depending on several factors. This document may contain proprietary confidential, trade secret or privileged information. Any unauthorized review, use, disclosure or distribution is prohibited and may be a violation of law.



Jason Kerr

Whole Wheat Garlic French Bread Cheese Pizza (Topped with Garlic Sauce and Mozzarella Cheese) 60WGUM2



Pack Size: 60/4.50oz. portions per case

Child Nutrition Information:

093793 - One 4.50oz. Whole Wheat Garlic French Bread Cheese Pizza provides 2.00oz. equivalent meat alternate and 2.00oz. equivalent grains for the Child Nutrition Meal Pattern Requirements.

Ingredients:

CHEESE: Low Moisture-Part Skim Mozzarella Cheese (Pasteurized Part Skim Milk, Cheese Cultures, Salt, Enzymes, Natamycin). CRUST: Water, Whole White Wheat Flour, Enriched Flour (Wheat Flour, Malted Barley Flour, Niacin, Reduced Iron, Thiamine Mononitrate, Riboflavin, Folic Acid), Wheat Gluten, Contains less than 2% of the following: Yeast, Sugar, Soybean Oil, Datem, Salt, Calcium Propionate (A Preservative), Wheat Flour, Ascorbic Acid (Dough Conditioner), Enzymes. SAUCE: Soybean Oil, Water, Garlic Juice, Salt, Contains Less Than 2% of: Distilled Vinegar, Dried Garlic, Xanthan Gum, Phosphoric Acid, Modified Gum Arabic, Potassium Sorbate (a Preservative), Natural Flavor, Citric Acid, Oleoresin Turmeric and Oleoresin Paprika (For Color), Calcium Disodium EDTA To Protect Flavor.

Allergens: Wheat, Milk. May Contain Soy.
Nardone Bros. is a peanut and tree nut-free facility.

Cooking Instructions:

For a softer crust: Preheat oven to 325 F. Place pizza on a baking sheet. Cook for 8 to 11 minutes or until cheese is melted and crust edges are golden brown.

For a crispy crust: Preheat oven to 325 F. Place pizza directly on center oven rack. Cook for 7 to 10 minutes or until cheese is melted and crust edges are golden brown.

Nutrition Facts

Servings Per Portion 1

Serving Size 4.50 oz

Amount Per Serving

Calories 378

	% Daily Value*
Total Fat 24 g	36%
Saturated Fat 12 g	59%
Trans Fat 0 g	0
Cholesterol 41 mg	14%
Sodium 405 mg	17%
Total carbohydrate 24 g	8%
Dietary Fiber 2 g	10%
Sugars 1 g	0
Includes 0g Added Sugars	0
Protein 21 g	0
Vitamin D 0 mcg	1%
Calcium 350 mg	35%
Iron 1 mg	8%
Potassium 84 mg	2%

* The % Daily Value (DV) tells you how much a nutrient in a serving of food contributes to a daily diet. 2,000 calories a day is used for general nutrition advice.

Shipping Info:

Net Weight: 16.88 lbs.
Gross Weight: 18.88 lbs.
Pieces/case: 60
UPC: 8554112097
GTIN: 00085541120974
Dimensions: 20 1/4 x 16 1/8 x 7 3/8
Cube: 1.40
Ti/Hi: 6/9
Shelf Life: 180 days frozen
Country of Origin: 100% U.S.



420 New Commerce Blvd. • Wilkes-Barre, PA 18706
1-800-823-5320

All product information is believed to be truthful and accurate.

Last Updated: 12/31/2021

Bob Wieden

MAX Pizza Quesadilla 200 77387 12699 3

Nutritional Information:

Calories	330
Total Fat, g	12g = 33 %cal from Fat
Saturated Fat, g	3.5g = 10% cal from Sat Fat
Trans Fat, g	0
Cholesterol, mg	10
Sodium, mg	830
Carbohydrate, g	40
Dietary Fiber, g	4
Sugars, g	3 g = 2% sugar by weight
Protein, g	16
	<u>Percent Daily Value</u>
Vitamin A	6
Vitamin C	0
Calcium	20
Iron	15

ALLERGENS	Milk Wheat Soy
Product Facts	
Shelf Life	360 days
Case Dimensions (LxWxH)	18.125x14.75 x 10.375
Case Cube	1.605
Pattern Tie x High = Total	6x 6 = 36
Gross Wt	31.85
Net Wt	28.98
PROGRAMS PRODUCT QUALIFIES FOR	
HUSC	no
35 10 35	yes
Alliance for a Healthier Generation	yes

CHILD NUTRITION IDENTIFICATION 086695

One 4.83 oz. The MAX Pizza Quesadilla with Cheese /Cheese Substitute between two layers of tortilla provides 2.00 oz. equivalent meat alternate, 2.00 oz. equivalent grains and 1/8 cup red/orange vegetable for Child Nutrition Meal Pattern Requirements. (Use of this logo and statement authorized by the Food and Nutrition Service, USDA 03/13)

WHOLE GRAIN CONTRIBUTION

The weight of all grain ingredients is at minimum 34g. There are 18g of whole grain in the product providing at least 51% whole grain per serving.

HARD BID SPEC

Frozen wedge pizza quesadilla, par-baked with full melt cheese. CN labeled. Pizza quesadilla to be a true triangular slice topped with shredded cheese with quesadilla dough crust on top and bottom of filling. Filling to consist of low moisture, part skim mozzarella cheese and substitute cheese, and salsa style sauce. Minimum portion weight of 4.83 oz. Pizza quesadilla must contain 2 equivalent grains, 2 Meat/Meat Alt and 1/8 cup vegetable. Contains 18g of whole grain flour. Whole wheat flour must be Ultragrain® Brand. Minimum of 330 calories. Packed 96, 4.83 oz. portions per case. The Max only-77387-12699.

HEATING INSTRUCTIONS

Convection Oven*: Preheat oven to 375°F. Bake on parchment lined pan 14 - 19 minutes.

Conventional Oven: Preheat oven to 400°F. Bake on parchment lined pan 14 - 19 minutes.

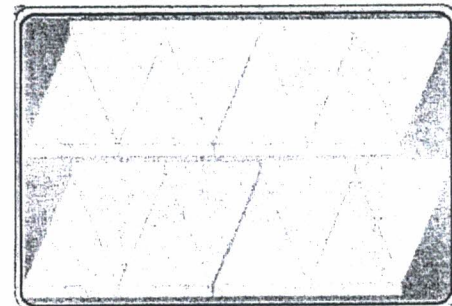
Note: Due to oven variances, cooking times and temperatures may require adjustment. Product must be cooked until internal temperature reaches a minimum of 165°F. Refrigerate or discard any unused portion.

INGREDIENTS

Water, Mozzarella Cheese (Pasteurized Part Skim Milk, Cheese Cultures, Salt, Enzymes), Whole Wheat Flour, Enriched Wheat Flour (Bleached Wheat Flour, Malted Barley Flour, Niacin, Reduced Iron, Thiamine Mononitrate, Riboflavin, Folic Acid), Tomato Paste (Not less than 31% NTSS), Soybean Oil, Soy Flour, Casein, Contains 2% or less of: Milk Protein Concentrate, Modified Corn Starch, Salsa Seasoning(Salt, Sugar, Dehydrated Onion and Garlic, Dehydrated Jalapeno Pepper, Citric Acid, Xanthan Gum, Spice, Dehydrated Cilantro, Potassium Sorbate), Salt, Modified Potato Starch, Baking Powder (Sodium Bicarbonate, Sodium Aluminum Sulfate, Cornstarch, Monocalcium Phosphate, Calcium Sulfate), Dextrose, Sodium Aluminum Phosphate, Dough Conditioner (Wheat Flour, Salt, Soy Oil, L-Cysteine, Ascorbic Acid, Enzymes), Vinegar, Wheat Gluten, Cheddar Cheese Flavor (Cheddar, Blue And Semi-Soft Cheese [Pasteurized Milk, Cheese Cultures, Salt, Enzymes], Water, Whey, Salt, Citric Acid), Disodium Phosphate, Mozzarella Cheese Type Flavor (Cheese [Milk, Culture, Rennet, Salt], Milk Solids, Disodium Phosphate), Lactic Acid, Sorbic Acid (Preservative), Paprika Annatto Blend (Natural Extractives Of Annatto Seeds And Paprika With Mono-, Di-, And Triglycerides, Soybean and/or Canola Oil, Other Natural Flavors, Tocopherol And Potassium Hydroxide), Nutrient Blend (Magnesium Oxide, Zinc Oxide, Calcium Pantothenate, Riboflavin And Vitamin B-12), Vitamin A Palmitate.

CONTAINS: MILK, SOY, WHEAT.

This specification was last updated on 04/2013



MeganJo Paulson

CHEEZY BREADSTICKS 151BC

Breadsticks topped with Mozzarella Cheese, Butter Flavoring, Garlic Seasoning



Number of Servings: 105

Serving Size: 1 Breadstick (4.0 oz./113g)

Case - Net Weight: 26.25 lb, Gross Weight: 28.25 lb, Dimensions: L: 24.56" x W: 12.44" x H: 10.63," Cube: 1.88'

Pallet - TIHL: 6/7 = 42 Cases

1.734.728.1600

www.sffoodsinc.com

Nutrition Facts

105 servings per container

Serving size **1 Breadstick**
(4.0 oz./113g)

Amount per serving

Calories 260

% Daily Value*

Total Fat 10g 13%

Saturated Fat 4.5g 23%

Trans Fat 0g

Cholesterol 25mg 8%

Sodium 420mg 18%

Total Carbohydrate 29g 11%

Dietary Fiber 2g 7%

Total Sugars 2g

Includes 0g Added Sugars 0%

Protein 14g

Vitamin D 0mcg 0%

Calcium 308mg 25%

Iron 2mg 10%

Potassium 114mg 2%

*The % Daily Value tells you how much a nutrient in a serving of food contributes to a daily diet. 2,000 calories a day is used for general nutrition advice.

Ingredients:

BREADSTICK (ENRICHED WHEAT FLOUR [WHEAT FLOUR, MALTED BARLEY FLOUR, NIACIN, REDUCED IRON, THIAMINE MONONITRATE, RIBOFLAVIN, FOLIC ACID], WHOLE WHEAT FLOUR, WATER, CANOLA OIL, CONTAINS 2% OR LESS OF EACH OF THE FOLLOWING: SUGAR, YEAST, SOYBEAN OIL, DEHYDRATED GARLIC, DEHYDRATED ONION, WHITE PEPPER, DEXTROSE, SALT, DIACETYL TARTARIC ACID ESTERS OF MONO-DIGLYCERIDES, CALCIUM SULFATE, GUAR GUM, MONOGLYCERIDES, AMMONIUM SULFATE, ASCORBIC ACID ADDED AS A DOUGH CONDITIONER, POTASSIUM IODATE, AND ENZYMES), MOZZARELLA CHEESE (PASTEURIZED PART-SKIM MILK, CHEESE CULTURE, SALT, ENZYMES, AND NATAMYCIN), WATER, CONTAINS LESS THAN 2% OF FOOD STARCH MODIFIED, BUTTER BUDS (MALTODEXTRIN, NATURAL BUTTER FLAVOR), GARLIC POWDER, CELLULOSE (ANTI-CAKING), SOY PROTEIN ISOLATE.

Allergens:

CONTAINS: MILK, SOY, WHEAT

Preparation & Handling Instructions:

FOR INSTITUTIONAL USE ONLY - KEEP FROZEN

For best results, allow to thaw prior to cooking. DO NOT REFREEZE.

Cook for 9-12 minutes in a 350°F convection oven.

Cook to an internal temperature of 165°F as measured by a food thermometer.

CAUTION: Product will be hot. Let stand for 2 minutes.



Meal Contribution:

MEAT/MEAT ALTERNATIVE..... 2.00 oz

EQUIVALENT GRAINS..... 2.00 oz

Shelf Life:

Nine (9) months frozen.



Verified By: John Cather

John Cather, Vice President of Sales

Date: 11/23/20



Conagra Foodservice
222 W. Merchandise Mart Plaza, Suite 1300
Chicago, IL 60654
TEL: 402-240-4000

The MAX Stuffed Crust Cheese Pizza 72-4.80 OZ UPC 77387 12716

Nutritional Information:

Nutrition Facts	
72 servings per container	
Serving size	1 Slice (136g)
Amount per serving	
Calories	280
% Daily Value*	
Total Fat 9g	12%
Saturated Fat 3g	15%
Trans Fat 0g	
Polyunsaturated Fat 1g	
Monounsaturated Fat 1g	
Cholesterol 15mg	5%
Sodium 490mg	21%
Total Carbohydrate 36g	13%
Dietary Fiber 3g	11%
Total Sugars 4g	
Includes less than 1g Added Sugars 2%	
Protein 16g	
Vitamin D 0mcg	0%
Calcium 410mg	30%
Iron 2.9mg	15%
Potassium 190mg	4%
*The % Daily Value tells you how much a nutrient in a serving of food contributes to a daily diet. 2,000 calories a day is used for general nutrition advice.	
Calories per gram: Fat 9 Carbohydrate 4 Protein 4	

29% calories from fat, 10% calories from Sat Fat, 3% sugar by weight

ALLERGENS	Milk, Soy, Wheat
Product Facts	
Frozen Shelf Life	360 Days
Case Dimensions (LxWxH)	19.125 x 14.75 x 9.375
Case Cube (ft3)	1.530
Pattern Tie x High = Total cases	6 x 7 = 42
Gross Wt (lbs)	26.800
Net Wt (lbs)	21.600
Kosher	Not a Kosher Product
COUNTRY OF ORIGIN INFORMATION	
Finished Product	USA
PROGRAMS PRODUCT QUALIFIES FOR	
HUSSC	Yes
35 10 35	Yes
Smart Snacks	No
Buy American	Yes

This specification was last updated on 1/20/2022

OTHER GTIN #	
Case	20077387127167
Each	60077387127165
Pallet	50077387127168

CHILD NUTRITION IDENTIFICATION 097810

One 4.80 oz. The MAX Cheese Stuffed Crust Pizza With Reduced Fat Mozzarella Cheese, Mozzarella Cheese Substitute and Mozzarella Cheese provides 2.00 oz. equivalent meat alternate, 2.00 oz. equivalents grains and 1/8 cup red/orange vegetable for Child Nutrition Meal Pattern Requirements. (Use of this logo and statement authorized by the Food and Nutrition Service, USDA 01/19)

WHOLE GRAIN CONTRIBUTION

The weight of all grain ingredients is at minimum 32g. There are 17g of whole grain in the product providing at least 51% whole grain per serving.

HARD BID SPEC

Frozen wedge pizza, par-baked with full melt cheese. Cheese blend to use a minimum of 65% real mozzarella cheese. CN labeled, Slice to be 8" from edge to tip and 5" wide. Pizza to be a true triangular wedge. Minimum portion weight of 4.8 oz. Primary Flour source of crust is Whole Wheat flour. Whole wheat flour must be Ultragrain® Brand. Pizza must contain a total of 2 equivalent grains, 2 Meat Alt and 1/8 cup vegetable. Minimum of 280 calories. No more than 9g of fat. No more than 29% calories from fat. Sodium 490mg or less. Zero trans fat. Packed 72, 4.80 oz. portions per case. The Max only - 77387-12716.

Ingredients

WATER, REDUCED FAT MOZZARELLA CHEESE PASTEURIZED PART SKIM MILK, NONFAT MILK, CHEESE CULTURES, MODIFIED CORN STARCH, SALT, VITAMIN A PALMITATE, AND ENZYMES. INGREDIENTS NOT IN REGULAR MOZZARELLA CHEESE, WHOLE WHEAT FLOUR, ENRICHED WHEAT FLOUR, WHEAT FLOUR, NIACIN, REDUCED IRON, THIAMINE MONONITRATE, RIBOFLAVIN, FOLIC ACID, Malted Barley Flour, MOZZARELLA CHEESE PASTEURIZED PART SKIM MILK, CHEESE CULTURES, SALT, ENZYMES, TOMATO PASTE NOT LESS THAN 31 NTSS, CORN OIL AND/OR SOYBEAN OIL, CASEIN, CONTAINS LESS THAN 2 OF: MODIFIED POTATO STARCH, SOYBEAN OIL, YEAST, PIZZA SEASONING SUGAR, SPICES, GARLIC POWDER, CITRIC ACID, WHEY, SALT, NONFAT DRY MILK, NATURAL FLAVOR, DEXTROSE, SODIUM ALUMINUM PHOSPHATE, DOUGH CONDITIONER WHEAT FLOUR, SALT, SOY OIL, L. CYSTEINE, ASCORBIC ACID, ENZYME AND/OR WHEAT GLUTEN, SUGAR, MODIFIED CORN STARCH, LACTIC ACID, SODIUM PHOSPHATE, CITRIC ACID, TRICALCIUM PHOSPHATE, SODIUM BICARBONATE, SOY FLOUR, SORBIC ACID, VITAMIN AND MINERAL SUPPLEMENT, MAGNESIUM OXIDE, DICALCIUM PHOSPHATE, ZINC OXIDE, IRON, RIBOFLAVIN [VITAMIN B2], PYRIDOXINE HYDROCHLORIDE [VITAMIN B6], CYANOCOBALAMIN [VITAMIN B12], NIACINAMIDE [VITAMIN B3], THIAMINE MONONITRATE [VITAMIN B1], VITAMIN A PALMITATE, XANTHAN GUM, SOY LECITHIN. CONTAINS: MILK, SOY AND WHEAT.

Shawn Fear

Shawn Fear

Director of Quality, Conagra Brands

Specsand.Inquiries@conagra.com



Conagra Foodservice
222 W. Merchandise Mart Plaza, Suite 1300
Chicago, IL 60654
TEL: 402-240-4000

The MAX Real Slice Pizza with Mozzarella Cheese 96-4.80oz UPC 77387 12617

Nutritional Information:

Nutrition Facts	
96 servings per container	
Serving size 1 Slice (136g)	
Amount per serving	
Calories	300
% Daily Value*	
Total Fat 11g	14%
Saturated Fat 6g	30%
Trans Fat 0g	
Polyunsaturated Fat 1.5g	
Monounsaturated Fat 2.5g	
Cholesterol 35mg	12%
Sodium 630mg	27%
Total Carbohydrate 35g	13%
Dietary Fiber 3g	11%
Total Sugars 4g	
Includes 1g Added Sugars	2%
Protein 17g	
Vitamin D 0mcg	0%
Calcium 340mg	25%
Iron 2mg	10%
Potassium 350mg	8%
*The % Daily Value tells you how much a nutrient in a serving of food contributes to a daily diet. 2,000 calories a day is used for general nutrition advice.	
Calories per gram:	
Fat 9	Carbohydrate 4 Protein 4

33% calories from fat, 18% calories from Sat Fat, 3% sugar by weight

CHILD NUTRITION IDENTIFICATION 097736

Each 4.80 oz. The MAX Real Slice Mozzarella Cheese Pizza provides 2.00 oz. equivalent meat alternate, 2.00 oz. equivalent grains and 1/8 cup red/orange vegetable for Child Nutrition Meal Pattern Requirements. (Use of this logo and statement authorized by the Food and Nutrition Service, USDA 12/18)

WHOLE GRAIN CONTRIBUTION

The weight of all grain ingredients is at minimum 33g. There are 16 g of whole grain in the product providing at least 51% whole grain per serving.

HARD BID SPEC

Frozen wedge pizza, par-baked with full melt cheese. CN labeled. Pizza to be a true triangular slice. Minimum portion weight of 4.80oz. Topping to consist of 100% low moisture part skim mozzarella cheese. Primary flour source of crust is whole wheat. Whole wheat flour must be Ultragrain® Brand. Pizza must contain 2.00 equivalent grains, 2 Meat/Meat Alt and 1/8 cup vegetable. Minimum of 300 calories. No more than 11g of Fat. Zero Trans fat. Par-baked 96-4.80 oz portions per case. The MAX only - 77387-12617.

Ingredients

MOZZARELLA CHEESE PASTEURIZED PART SKIM MILK, CHEESE CULTURES, SALT, ENZYMES, WATER, WHOLE WHEAT FLOUR, ENRICHED WHEAT FLOUR WHEAT FLOUR, NIACIN, REDUCED IRON, THIAMINE MONONITRATE, RIBOFLAVIN, FOLIC ACID, MALTED BARLEY FLOUR, TOMATO PASTE NOT LESS THAN 31 NTSS, CONTAINS LESS THAN 2 OF: SOYBEAN OIL, PIZZA SEASONING SALT, SUGAR, SPICES, DEHYDRATED ONION, GUAR AND XANTHAN GUM, GARLIC POWDER, POTASSIUM SORBATE, CITRIC ACID, YEAST, DEXTROSE, DOUGH CONDITIONER WHEAT FLOUR, SALT, SOY OIL, L. CYSTEINE, ASCORBIC ACID, ENZYME AND/OR WHEAT GLUTEN, SUGAR, SALT, MODIFIED CORN STARCH, SODIUM BICARBONATE, SOY FLOUR, SOY LECITHIN. CONTAINS: MILK, SOY, WHEAT.

ALLERGENS	Milk, Soy, Wheat
Product Facts	
Frozen Shelf Life	360 Days
Case Dimensions (LxWxH)	18.125 x 14.75 x 10.375
Case Cube (ft3)	1.605
Pattern Tie x High = Total cases	6 x 6 = 36
Gross Wt (lbs)	31.538
Net Wt (lbs)	28.800
Kosher	Not a Kosher Product
Country of Origin Information	
Finished Product	USA
PROGRAMS PRODUCT QUALIFIES FOR	
HUSSC	Yes
35 10 35	No
Smart Snack	No
Buy American	Yes

This specification was last updated on 7/22/2021

OTHER GTIN #	
Case	20077387126177
Each	60077387126175
Pallet	50077387126178

Shawn Fear

Shawn Fear

Director of Quality, Conagra Brands

SpecsandInquiries@conagra.com

Back to Search

SHARE PRINT



TASTY BRANDS

Lasagna

LASAGNA, CHEESE WHOLE-GRAIN-RICH CHILD-NUTRITION COOKED FROZEN BULK ROLLUP

3800737



110/4.15 OZ

ADD TO ORDER

Quantity Available
CS: 48

Product Description

Additional Description

TFF WHOLE GRAIN CHEESE LASAGNA ROLLUP IS AT LEAST 51% WHOLE GRAIN RICH.

Ingredients

FILLING INGREDIENTS: LOW FAT RICOTTA CHEESE SKIM MILK, WATER, MODIFIED FOOD STARCH, MILKFAT, MILK PROTEIN CONCENTRATE, XANTHAN GUM, CARRAGEENAN GUM, ACETIC ACID, LOW MOISTURE PART SKIM MOZZARELLA CHEESE CULTURED PART SKIM MILK, SALT, ENZYMES, ROMANO CHEESE MADE FROM COW'S MILK CULTURED MILK, SALT, ENZYMES, PARMESAN CHEESE PART SKIM MILK, CHEESE CULTURES, SALT, ENZYMES, ASIAGO CHEESE CULTURED MILK, SALT, ENZYMES, WATER, WHOLE WHEAT CRACKER MEAL WHOLE WHEAT FLOUR, DEXTROSE, WHEY PROTEIN ISOLATE, SODIUM CASEINATE, FOOD STARCH-MODIFIED, SUGAR, SALT, DEHYDRATED GARLIC. PASTA INGREDIENTS: WHOLE WHEAT FLOUR AND ENRICHED SEMOLINA BLEND WHOLE WHEAT FLOUR, DURUM WHEAT, NIACIN, FERROUS SULFATE, THIAMIN MONONITRATE, RIBOFLAVIN, FOLIC ACID, WATER, ASCORBIC ACID TO PROMOTE COLOR RETENTION.

Product Information

Class: 20 - APPETIZERS, ENTREES, & POTATOES REF & FZN

Category: 151 - ENTREES, REF & FZN

Group: 2451 - LASAGNA, ENTREE, FROZEN

Manufacturer Information

TASTY BRANDS LLC
Manufacturer Product #: 00801WG

Shipping Information

Physical Attributes

Gross Weight:	30.5 LB	Length:	16 IN
Net Weight:	29.53 LB	Cube:	1.38 CF
Height:	11.25 IN	Catch Weight:	No
Width:	13.25 IN		

Storage Information

USF Storage:	FROZEN 0
Min. Temperature:	-10 fa
Max. Temperature:	15 fa

Nutrition Facts

110 Servings Per Container

Serving Size (4.3oz)

Amount Per Serving

Calories 240

		% Daily Value *
Total Fat	6g	9%
Saturated Fat	3.5g	18%
Trans Fat	0g	
Cholesterol	20mg	7%
Sodium	390mg	16%
Total Carbohydrate	29g	10%
Dietary Fiber	2g	8%
Total Sugars	5g	
Includes 0g Added Sugars		0%
Protein	15g	
Vitamin A		8%
Vitamin C		10%
Calcium		30%
Iron		6%

Supplemental Facts

	% Daily Value *
None specified at this time	

* The % Daily Value (DV) tells you how much a nutrient in a serving of food contributes to a daily diet. 2,000 calories a day is used for general nutrition advice.

Report Discrepancies

Ingredients, Allergens & Nutrition Information

IMPORTANT: Product information, including ingredients, allergens and nutritional information, is provided by manufacturers/suppliers, and includes information from the Global Data Synchronization Network (GDSN) and other third party sources such as the United States Department of Agriculture. We know that allergen information is important to many customers, so we are providing product information from the manufacturers/suppliers for the FDA's top allergens (<https://www.fda.gov/food/food-labeling-nutrition/food-allergies>), along with other select ingredients. This information may not cover potential cross-contact risks or alternate forms of the allergen(s). Product formulations are subject to change and nutritional values can vary due to production, seasonal and other changes. Please always review the ingredients, allergens, nutrition information and other product information on the product packaging delivered to your location. US Foods does not assume any legal liability and makes no warranty or guaranty, express or implied, regarding the completeness or accuracy of this information. Product images are provided for

albie's

48-5 oz. WG Enchilada Empanada

Chicken, Mozzarella Cheese and Enchilada Sauce in a Whole Grain Crust

Product Code #860 (Bulk) / #830 (IW)

Nutrition Facts

48 servings per container

Serving size 5oz (142g)

Amount per serving

Calories 300

% Daily Value*

Total Fat 11g 14%

Saturated Fat 5g 25%

Trans Fat 0g

Cholesterol 35mg 12%

Sodium 650mg 28%

Total Carbohydrate 32g 12%

Dietary Fiber 3g 11%

Total Sugars 4g

Includes 3g Added Sugars 6%

Protein 19g

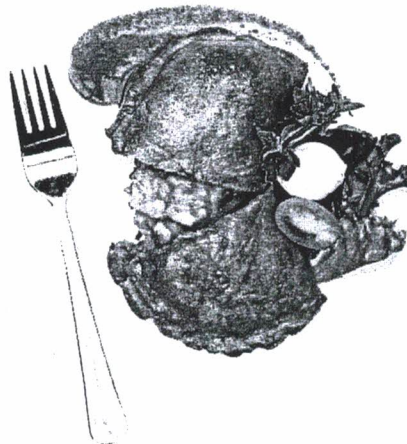
Vitamin D 0mcg 0%

Calcium 271mg 20%

Iron 2mg 10%

Potassium 132mg 2%

*The % Daily Value tells you how much a nutrient in a serving of food contributes to a daily diet. 2,000 calories a day is used for general nutrition advice.



C.N. EQUIVALENTS – 2 MMA & 2 GRAINS

GTIN: 1 00 71887 99855 8 (#860)

GTIN: 1 00 71887 99846 6 (#830)

CASE DIMENSIONS: 21 X 14 X 4.25

Net Wt: 15# / Gross Wt: 16#

SHELF LIFE: Frozen: 365 days, Refrigerated: 7 days

TI/HI: 5/10

INGREDIENTS: CRUST: Water, Whole Wheat Flour, Wheat flour enriched (niacin, reduced iron, thiamine mononitrate, riboflavin, folic acid), Malted Barley Flour, Sugar, Soybean oil (citric acid), Yeast (sorbitan monostearate, ascorbic acid), Salt (yellow prussiate of soda). **FILLING:** Enchilada Sauce (water, corn syrup solids, tomato powder, modified corn starch, salt, sugar, spices, dextrose, dehydrated onion, dehydrated garlic, xanthan gum, and contains less than 2% silicon dioxide (anti caking agent). Mozzarella Cheese (pasteurized part-skim milk, cheese culture, salt, enzymes) May contain: Pasteurized Milk and Skim Milk, Modified Corn Starch, Nonfat Milk, Modified Food Starch, Powdered Cellulose, Potassium Chloride, Natural Flavors, Ascorbic Acid (to protect flavor), Cooked Chicken Meat, (chicken breast meat with rib meat attached, water, isolated soy protein, salt, sodium phosphate). **CONTAINS: WHEAT, SOY AND MILK PRODUCTS.**

For Food Safety follow these COOKING instructions carefully

Calzone Cooking Instructions: For best results thaw product before cooking. Ovens and microwaves may vary; cooking times may need to be adjusted. For Microwave (1100W), Cook for 1 ½-2 minutes or until internal temperature reaches 160°. Additional cooking time may be required for lower wattage microwave ovens. For Conventional oven: Cook for 10-12 minutes at 350° or until internal temperature reaches 160°. **FOR FOOD SAFETY, ENSURE PRODUCT REACHES AN INTERNAL TEMPERATURE OF 160°**

A handwritten signature in black ink, appearing to read "Keven Clawson". The signature is fluid and cursive, with a large, stylized "K" at the beginning.

Keven Clawson, QA Manager



1/13/2022

MINI PEPPERONI FLAVORED CALZONES 9073BC

Mozzarella Cheese, Pepperoni, Zesty Sauce in a Golden Crust



1.734.728.1600
www.sffoodsinc.com

Number of Servings: 48

Serving Size: 3 Mini Calzones (5.0 oz./142g)

Case - Net Weight: 15.00 lb, Gross Weight: 17.25 lb, Dimensions: L: 14.75" x W: 10.75" x H: 7.00," Cube: 0.64'

Pallet - TIHL: 10/9 = 90 Cases

Nutrition Facts

48 servings per container

Serving size **3 Mini Calzones**
(5.0 oz./142g)

Amount per serving

Calories **330**

% Daily Value*

Total Fat 12g 15%

Saturated Fat 5g 25%

Trans Fat 0g

Cholesterol 25mg 8%

Sodium 510mg 22%

Total Carbohydrate 40g 15%

Dietary Fiber 4g 14%

Total Sugars 6g

Includes 4g Added Sugars 8%

Protein 16g

Vitamin D 0mcg 0%

Calcium 267mg 20%

Iron 2mg 10%

Potassium 117mg 2%

*The % Daily Value tells you how much a nutrient in a serving of food contributes to a daily diet. 2,000 calories a day is used for general nutrition advice.

Ingredients:

WATER, MOZZARELLA CHEESE (PASTEURIZED PART SKIM MILK, CULTURES, SALT AND ENZYMES), WHOLE WHEAT FLOUR, WHEAT ENRICHED FLOUR (WHEAT FLOUR, MALTED BARLEY FLOUR, NIACIN, IRON, THIAMINE MONONITRATE, RIBOFLAVIN, FOLIC ACID), TOMATO PASTE, BEEF PEPPERONI (BEEF, SALT, DEXTROSE, LACTIC ACID STARTER CULTURE, NATURAL FLAVORINGS, OLEORESIN OF PAPRIKA, NATURAL SMOKE FLAVORING, DEHYDRATED GARLIC, SODIUM NITRITE, BHA, BHT, CITRIC ACID), BEEF PEPPERONI (BEEF, SPICES, SALT, POTASSIUM CHLORIDE, CONTAINS 2% OR LESS OF THE FOLLOWING: SUGAR, MALTODEXTRIN, NATURAL SPICE EXTRACTIVES, PAPRIKA, OLEORESIN OF PAPRIKA, NATURAL SMOKE FLAVOR, BHA, BHT, CITRIC ACID, SODIUM NITRITE, LACTIC ACID STARTER CULTURES), SUGAR, CONTAINS LESS THAN 2% OF BAKING POWDER, BAKING SODA, GARLIC POWDER, METHYLCELLULOSE, PARMESAN CHEESE ([PASTEURIZED COW'S MILK, CHEESE CULTURE, SALT, ENZYMES], AND POWDERED CELLULOSE [ANTI-CAKING]), SOY PROTEIN ISOLATE, SALT, SEASONING (SUGAR, SEA SALT, DEHYDRATED GARLIC, DEHYDRATED ONION, OREGANO LEAF, BASIL LEAF, ANISE, WHITE PEPPER, BLACK PEPPER, PARSLEY LEAF, RED PEPPER SEED, TURMERIC, CANOLA OIL), SOYBEAN OIL, SPICE (OREGANO, BASIL, RED PEPPER AND DEHYDRATED PARSLEY), YEAST.

Allergens:

CONTAINS: MILK, SOY, WHEAT

Preparation & Handling Instructions:

FOR INSTITUTIONAL USE ONLY - KEEP FROZEN

For best results, allow to thaw prior to cooking. DO NOT REFREEZE.

Cook for 8-10 minutes in a 350°F convection oven.

Cook before eating to an internal temperature of 165°F as measured by a food thermometer.

Meal Contribution:

MEAT/MEAT ALTERNATIVE..... 2.00

EQUIVALENT GRAINS..... 2.00

Shelf Life:

Seven (7) months frozen.



Verified By:

John Cather

John Cather, Vice President of Sales

Date: 12/1/17

Elem.

MINI CHEESE CALZONES 9074BC

Mozzarella Cheese, Zesty Sauce in a Golden Crust



1.734.728.1600

www.sffoodsinc.com

Number of Servings: 48
Serving Size: 3 Mini Calzones (5.0 oz./142g)
Case - Net Weight: 15.00 lb, Gross Weight: 17.25 lb, Dimensions: L: 14.75" x W: 10.75" x H: 7.00," Cube: 0.64'
Pallet - TIHL: 10/9 = 90 Cases

Nutrition Facts

48 servings per container
Serving size 3 Mini Calzones
(5.0 oz./142g)

Amount per serving

Calories 320

% Daily Value*

Total Fat 11g 14%

Saturated Fat 5g 25%

Trans Fat 0g

Cholesterol 20mg 7%

Sodium 470mg 20%

Total Carbohydrate 40g 15%

Dietary Fiber 4g 14%

Total Sugars 6g

Includes 4g Added Sugars 8%

Protein 17g

Vitamin D 0mcg 0%

Calcium 315mg 25%

Iron 2mg 10%

Potassium 117mg 2%

*The % Daily Value tells you how much a nutrient in a serving of food contributes to a daily diet. 2,000 calories a day is used for general nutrition advice.

Ingredients:

WATER, MOZZARELLA CHEESE (PASTEURIZED PART SKIM MILK, CULTURES, SALT AND ENZYMES), WHOLE WHEAT FLOUR, WHEAT ENRICHED FLOUR (WHEAT FLOUR, MALTED BARLEY FLOUR, NIACIN, IRON, THIAMINE MONONITRATE, RIBOFLAVIN, FOLIC ACID), TOMATO PASTE, SUGAR, CONTAINS LESS THAN 2% OF BAKING POWDER, BAKING SODA, GARLIC POWDER, METHYLCELLULOSE, PARMESAN CHEESE ([PASTEURIZED COW'S MILK, CHEESE CULTURE, SALT, ENZYMES], AND POWDERED CELLULOSE [ANTI-CAKING]), SALT, SEASONING (SUGAR, SEA SALT, DEHYDRATED GARLIC, DEHYDRATED ONION, OREGANO LEAF, BASIL LEAF, ANISE, WHITE PEPPER, BLACK PEPPER, PARSLEY LEAF, RED PEPPER SEED, TURMERIC, CANOLA OIL), SOYBEAN OIL, SPICE (OREGANO, BASIL, RED PEPPER AND DEHYDRATED PARSLEY), YEAST.

Allergens:

CONTAINS: MILK, SOY, WHEAT



Preparation & Handling Instructions:

FOR INSTITUTIONAL USE ONLY - KEEP FROZEN

For best results, allow to thaw prior to cooking. DO NOT REFREEZE.

Cook for 8-10 minutes in a 350°F convection oven.

Cook before eating to an internal temperature of 165°F as measured by a food thermometer.

Meal Contribution:

MEAT/MEAT ALTERNATIVE..... 2.00

EQUIVALENT GRAINS..... 2.00

Shelf Life:

Seven (7) months frozen.



ALL

SPLIT TOP PEPPERONI FLAVORED CALZONE 201MC/211BC

Mozzarella Cheese, Pepperoni, Zesty Sauce in a Golden Crust



1.734.728.1600

www.sffoodsinc.com

Number of Servings: 80
 Serving Size: 1 Calzone (5.0 oz./142g)
 Case - Net Weight: 25.00 lb, Gross Weight: 27.25 lb, Dimensions: L: 17.25" x W: 12.50" x H: 7.38" Cube: 0.92'
 Pallet - TIH: 8/7 = 56 Cases

Nutrition Facts

80 servings per container
 Serving size **1 Calzone**
 (5.0 oz./142g)

Amount per serving
Calories 280

	% Daily Value*
Total Fat 11g	14%
Saturated Fat 6g	30%
Trans Fat 0g	
Cholesterol 25mg	8%
Sodium 590mg	26%
Total Carbohydrate 32g	12%
Dietary Fiber 3g	11%
Total Sugars 6g	
Includes 3g Added Sugars	6%
Protein 19g	
Vitamin D 0mcg	0%
Calcium 361mg	30%
Iron 2mg	10%
Potassium 84mg	2%

*The % Daily Value tells you how much a nutrient in a serving of food contributes to a daily diet. 2,000 calories a day is used for general nutrition advice.

Ingredients:

WATER, LOW FAT MOZZARELLA CHEESE ([PASTEURIZED PART-SKIM MILK, CULTURES, SALT, ENZYMES], NONFAT MILK, MODIFIED FOOD STARCH*, POTASSIUM CHLORIDE*, *INGREDIENTS NOT IN REGULAR MOZZARELLA CHEESE), WHOLE WHEAT FLOUR, BEEF PEPPERONI (BEEF, SALT, DEXTROSE, LACTIC ACID STARTER CULTURE, NATURAL FLAVORINGS, OLEORESIN OF PAPRIKA, NATURAL SMOKE FLAVOR, DEHYDRATED GARLIC, SODIUM NITRITE, BHA, BHT, CITRIC ACID), BEEF PEPPERONI (BEEF, SPICES, SALT, POTASSIUM CHLORIDE, CONTAINS 2% OR LESS OF THE FOLLOWING: SUGAR, MALTODEXTRIN, NATURAL SPICE EXTRACTIVES, PAPRIKA, OLEORESIN OF PAPRIKA, NATURAL SMOKE FLAVOR, BHA, BHT, CITRIC ACID, SODIUM NITRITE, LACTIC ACID STARTER CULTURES), MOZZARELLA CHEESE (PASTEURIZED PART SKIM MILK, CULTURES, SALT AND ENZYMES), TOMATO PASTE, WHEAT ENRICHED FLOUR (WHEAT FLOUR, MALTED BARLEY FLOUR, NIACIN, IRON, THIAMINE MONONITRATE, RIBOFLAVIN, FOLIC ACID), SUGAR, SOYBEAN OIL, PARMESAN CHEESE ([PASTEURIZED COW'S MILK, CHEESE CULTURE, SALT, ENZYMES], AND POWDERED CELLULOSE [ANTI-CAKING]), SEASONING (SUGAR, SEA SALT, DEHYDRATED GARLIC, DEHYDRATED ONION, OREGANO LEAF, BASIL LEAF, ANISE, WHITE PEPPER, BLACK PEPPER, PARSLEY LEAF, RED PEPPER SEED, TURMERIC, CANOLA OIL), YEAST, METHYLCELLULOSE, BAKING SODA, BAKING POWDER, SALT, SPICE (OREGANO, BASIL, RED PEPPER AND DEHYDRATED PARSLEY), GARLIC POWDER.

Allergens:

CONTAINS: MILK, SOY, WHEAT



Preparation & Handling Instructions:

FOR INSTITUTIONAL USE ONLY - KEEP FROZEN

For best results, allow to thaw prior to cooking. DO NOT REFREEZE.

Cook for 12-15 minutes in a 350°F convection oven. If individually wrapped, cook in ovenable film.

Cook before eating to an internal temperature of 165°F as measured by a food thermometer.

Meal Contribution:

MEAT/MEAT ALTERNATIVE..... 2.25
 EQUIVALENT GRAINS..... 2.00

Shelf Life:

Five (5) months frozen.

