

MAX Maxstix Mozzarella 100 77387 12439 8

Nutritional Information:

Calories	150
Total Fat, g	6g = 36 %cal from Fat
Saturated Fat, g	2g = 12% cal from Sat Fat
Trans Fat, g	0
Cholesterol, mg	5
Sodium, mg	370
Carbohydrate, g	17
Dietary Fiber, g	2
Sugars, g	3 g = 5% sugar by weight
Protein, g	7
	<u>Percent Daily Value</u>
Vitamin A	2
Vitamin C	0
Calcium	15
Iron	6

CHILD NUTRITION IDENTIFICATION 085422

One 1.93 oz. Mozzarella Cheese/Cheese Substitute Filled Pizza Stick provides 1.00 oz. equivalent meat alternate and 1.00 oz. equivalent grains for Child Nutrition Meal Pattern Requirements. (Use of this logo and statement authorized by the Food and Nutrition Service, USDA 01/13)

WHOLE GRAIN CONTRIBUTION

The weight of all grain ingredients is at minimum 15g. There are 8 g of whole grain in the product providing at least 51% whole grain per serving.

HARD BID SPEC

Frozen, full-melt pizza sticks topped with shredded cheese. Minimum portion weight of 1.93 oz. Pizzeria dough filled with low moisture part skim mozzarella cheese and substitute cheese. Stick must contain one equivalent grain and one meat/meat alternate. Minimum of 150 calories. Packed 192 per case. The Max only – 77387-12439.

HEATING INSTRUCTIONS

Note: Ovens will vary. Please adjust time and temperature accordingly. Refrigerate or discard any unused portion. Fill baking pan with 54 MaxStix as illustrated.

Convection Oven: Bake at 375°F for 10 to 12 minutes or until internal temperature reaches a minimum of 165°F.

Conventional Oven: Bake at 400°F for 14 to 17 minutes or until internal temperature reaches a minimum of 165°F.

INGREDIENTS

Mozzarella Cheese (Pasteurized Part Skim Milk, Cheese Cultures, Salt, Enzymes), Water, Whole Wheat Flour, Enriched Wheat Flour (Bleached Wheat Flour, Malted Barley Flour, Niacin, Reduced Iron, Thiamine Mononitrate, Riboflavin, Folic Acid), Vegetable Oil (Soybean Oil, Partially Hydrogenated Soybean Oil With Citric Acid [Added As A Preservative]), Casein, Milk Protein Concentrate, Contains 2% or less of: Dextrose, Soybean Oil, Modified Corn Starch, Salt, Baking Powder (Sodium Bicarbonate, Sodium Aluminum Sulfate, Cornstarch, Monocalcium Phosphate, Calcium Sulfate), Modified Potato Starch, Sodium Aluminum Phosphate, Wheat Gluten and/or Dough Conditioner (Wheat Flour, Salt, Soy Oil, L-Cysteine, Ascorbic Acid, Enzyme), Disodium Phosphate, Mozzarella Cheese Type Flavor (Cheese [Milk, Culture, Rennet, Salt], Milk Solids, Disodium Phosphate), Lactic Acid, Sorbic Acid (Preservative), Soy Flour, Nutrient Blend (Magnesium Oxide, Zinc Oxide, Calcium Pantothenate, Riboflavin And Vitamin B-12), Vitamin A Palmitate.

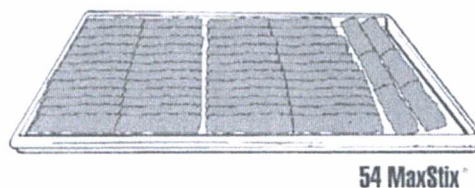
CONTAINS: MILK, SOY, WHEAT.

This specification was last updated on 7/2015



Shawn Fear
Customer Facing Quality Manager, Food Service
ConAgra Foods Inc.

ALLERGENS	Milk Wheat Soy
Product Facts	
Shelf Life	360 days
Case Dimensions (LxWxH)	17.875x10.875 x 8.75
Case Cube	0.984
Pattern Tie x High = Total	9x 7 = 63
Gross Wt	27.2
Net Wt	23.16
PROGRAMS PRODUCT QUALIFIES FOR	
HUSCC	no
35 10 35	no
Alliance for a Healthier Generation	no



54 MaxStix®



Product Information

BOS 6" WHOLE GRAIN REDUCED FAT CHEESE BOSCO STICK NP

Nutrition Facts	
144 Servings Per Container	
Serving Size	1 Bread Stick (61g)
Amount Per Serving	
Calories	150
% Daily Value *	
Total Fat 5g	6%
Saturated Fat 2.5g	13%
Trans Fat 0g	
Polyunsaturated Fat	
Monounsaturated Fat	
Cholesterol 15mg	5%
Sodium 220mg	10%
Total Carbohydrate 17g	6%
Dietary Fiber 2g	7%
Total Sugars 1g	
Includes 1g Added Sugars	2%
Protein 10g	
Vitamin D 2µgmg	10%
Calcium 222mg	15%
Iron 1mg	6%
Potassium 80mg	2%
* The % Daily Value tells you how much a nutrient in a serving of food contributes to a daily diet. 2,000 calories a day is used for general nutrition advice.	

Ingredient Statement

Crust: Flour blend [Whole-wheat flour, Enriched flour (wheat flour, niacin, reduced iron, thiamine mononitrate, riboflavin, enzyme, folic acid)], Water, Brown sugar, Corn oil, Dough conditioner (soybean oil, mono and diglycerides, soy shortening flakes), Salt, vital wheat gluten, Yeast, L-cysteine. Cheeses: Mozzarella cheese (pasteurized part skim milk, cheese cultures, salt, enzymes). Reduced fat/reduced sodium mozzarella cheese (pasteurized part skim milk, nonfat milk, modified food starch*, cheese culture, salt, potassium chloride*, natural flavors*, annatto, vitamin A palmitate, enzymes), *Ingredients not in regular mozzarella cheese.

Allergens

Wheat

Milk

Equivalents

System ID	System Name	Equivalent
SAPMM	Old Tyson	702011-1120
SAP4MM	New Tyson	17020111120

HIGH LINER FOODS

4/5.445 Lb Whole Grain Crunchy Breaded Mozzarella Cheese Sticks 0.84 oz, CN

High Liner Mozzarella Sticks are the perfect example of an irresistible classic made with whole grain. Quality mozzarella is coated with just the right amount of breading, seasoned with mild Italian herbs and spices. Each fries to the perfectly crunchy, flavorful gooeyness craved by all ages.;



Product Last Saved Date: 08 March 2022

Nutrition Facts

83 Servings per container

Serving Size **5 Sticks**

Amount Per Serving

Calories

Total Fat 22 g **28%**

Saturated Fat 8 g **39%**

Trans Fat 0 g

Cholesterol 30 mg **10%**

Sodium 370 mg **16%**

Total Carbohydrates 32 g **12%**

Dietary Fiber 3 g **10%**

Total Sugars 3 g

Includes 2 g Added Sugars **4%**

Protein 19 g

Vitamin D 0 mcg **0%**

Calcium 430 mg **35%**

Iron 1.7 mg **10%**

Potassium 160 mg **4%**

* The % Daily Values (DV) tells you how much a nutrient in a serving of food contributes to a daily diet. 2,000 calories a day is used for general nutrition advice.

Product Specifications :

Code	GTIN	Type Of Catch
G1042DF	30041810010422	

Brand	GPC Description
High Liner Foodservice	Cheese (Frozen)

Gross Weight	Net Weight	Country of Origin	Kosher	Gluten Free
23.958 LBR	21.78 LBR	N/A	Undeclared	No

Shipping Information

Length	Width	Height	Volume	TlxHl	Shelf Life	Storage Temp From/To
15.8125 INH	11.8125 INH	10.125 INH	1.0944 FTQ	10x6	547 Days	-10 FAH / 0 FAH

Ingredients :

LOW MOISTURE PART SKIM MOZZARELLA CHEESE (PASTEURIZED PART SKIM MILK, CHEESE CULTURES, SALT, ENZYMES), WHOLE WHEAT FLOUR, WATER, VEGETABLE OIL (CANOLA OIL, COTTONSEED OIL, AND/OR SOYBEAN OIL), ENRICHED WHEAT FLOUR (FLOUR, NIACIN, REDUCED IRON, THIAMINE MONONITRATE, RIBOFLAVIN, FOLIC ACID), ENRICHED WHEAT FLOUR (FLOUR, NIACIN, FERROUS SULFATE, THIAMINE MONONITRATE, RIBOFLAVIN, FOLIC ACID), WHOLE YELLOW CORN MEAL, CONTAINS 2% OR LESS OF: MODIFIED CORN STARCH, SUGAR, GARLIC POWDER, ONION POWDER, MODIFIED CELLULOSE, YEAST, YEAST EXTRACT, WHEY, LEAVENING (SODIUM ACID PYROPHOSPHATE, SODIUM BICARBONATE, MONOCALCIUM PHOSPHATE), SALT, SPICES, CORN STARCH, YELLOW CORN FLOUR, FRUIT CONCENTRATE FOR COLOR (APPLE, HIBISCUS), MALTODEXTRIN, EXTRACTIVES OF PAPRIKA, ANNATTO AND TURMERIC (COLOR). CONTAINS: WHEAT, MILK

Allergens(C='Contains' MC='May Contain' N='None' NI='No Info Provided'):

Eggs - N	Milk - C	Soy - N
Fish - N	Wheat - C	TreeNuts - N
Peanuts - N	Crustacean - N	

Prep & Cooking Suggestions:

COOKING INSTRUCTIONS FROM FROZEN: TO DEEP FRY: Preheat fryer to 350°F and fry for 2 minutes 15 seconds. TO BAKE: Place frozen sticks on a lightly oiled sheet pan. CONVECTION OVEN: Preheat oven to 425°F and bake for 6-7 minutes. NOTE: COOK TO AN INTERNAL TEMPERATURE OF 160°F MINIMUM. CAUTION: CHEESE FILLING MAY BE HOT

Species / Scientific Name:

Serving Suggestions:

The quintessential appetizer, these superb mozzarella sticks are a natural with marinara but also pair well any special sauce you create.

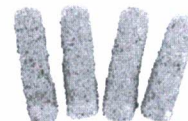
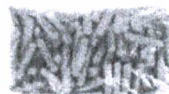
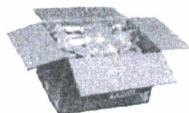
Claims & Child Nutrition:

BAP Certified:

MSC Certified:

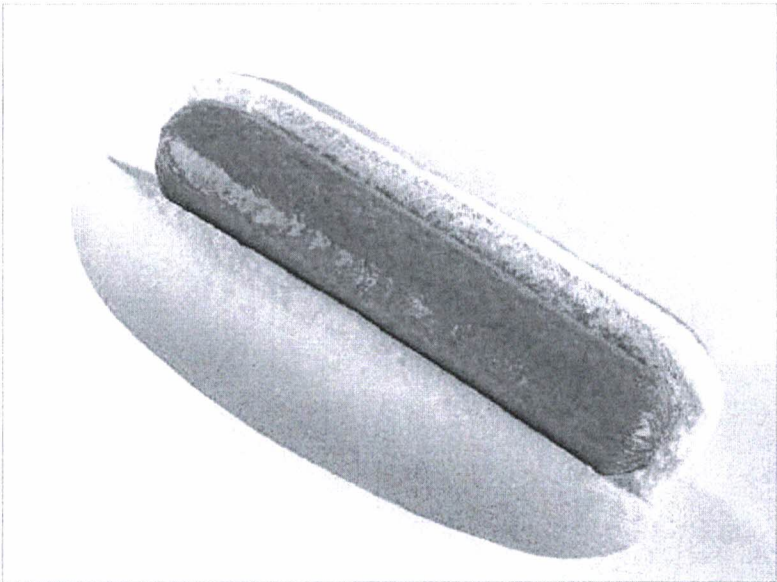
Has CN Statement: Yes

CN Statement: FIVE PRECOOKED BREADED MOZZARELLA CHEESE STICKS (0.84 OZ EACH) PROVIDE 2.00 OZ EQUIVALENT MEAT ALTERNATE AND 2.00 OZ EQUIVALENT GRAINS FOR CHILD NUTRITION MEAL PATTERN REQUIREMENTS.



[Back to Order Guide](#)

[SHARE](#) [PRINT](#)



KENT
Hot Dog
HOT DOG, ALL-BEEF 8:1 6" SKINLESS COOKED
BLACK ANGUS NATURAL FROZEN
8464012

4/2.5 LB

[Add to Order](#)

Product Description

Additional Description
THERE ARE 39-41 LINKS PER PACKAGE.

Ingredients
BEEF, WATER, LESS THAN 2 OF THE FOLLOWING: SEA SALT, NATURAL FLAVORINGS, VINEGAR, CHERRY POWDER, SUGAR, PAPRIKA.

Product Information
Class: 32 - PROCESSED MEAT
Category: 252 - HOT DOGS & CORN DOGS
Group: 2120 - HOT DOGS, BEEF, FROZEN

Manufacturer Information
KENT QUALITY FOODS INC
Manufacturer Product #: 408186

Preparation & Cooking

Preparations and Cooking Instructions
Heat to 165 degrees F internal temperature

Handling Instructions
210 days from date of pack. Thawed product in sealed package - 21 days @ 35F or less. Opened packages - 5 to 7 days @ 35F or less. Thaw unopened packages under refrigeration at 35F for 36 to 48 hours. If packages are removed from the case, identify with date, time and product identification.



Nutritional Facts

Serving Size (2oz)		Servings Per Container 40	
Amount Per Serving			
Calories	160	Calories from Fat 130	
		% Daily Value *	
Total Fat	15g	23%	
Saturated Fat	6g	30%	
Trans Fat	.5g		
Cholesterol	35mg	12%	
Sodium	220mg	9%	
Total Carbohydrate	1g	0%	
Dietary Fiber	0g	0%	
Sugars	1g		
Protein	7g		
Vitamin A		0%	
Vitamin C		0%	
Calcium		0%	
Iron		4%	

* Percent Daily Values are based on a 2,000 calorie diet. Your daily values may be higher or lower depending on your calorie needs.

	Calories	2,000	2,500
Total Fat	Less than	65g	80g
Sat Fat	Less than	20g	25g
Cholesterol	Less than	300mg	300mg
Sodium	Less than	2400mg	2400mg
Total Carbohydrate		300g	375mg
Dietary Fiber		25g	30g

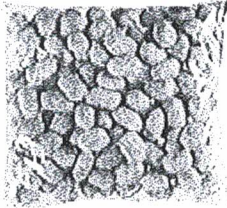
Supplemental Facts

	% Daily Value *
None specified at this time	
* Percent Daily Values are based on a 2,000 calorie diet. Your daily values may be higher or lower depending on your calorie needs.	

Report Discrepancies

WHOLE GRAIN CHICKEN POP DOGS®), CN

PRODUCT CODE: 96086



Unit Weight/Count: 5 LB / 2

Product UPC:

Case GTIN: 00075278960868

Net Case Weight: 10.00 LB

Case Dimensions (LxWxH) O.D: 15.8125 IN x
10.8125 IN x 5.0652 IN

Case Cube: .50 CF

Pallet Configuration: 10 x 13

Cases/Pallet: 130

Case Tare: 1 LB

EDI UPC: 007527896086

FEATURES & BENEFITS

- FULLY COOKED LOWER FAT CHICKEN MINI LINKS WRAPPED IN 100% WHOLE GRAIN HONEY CRUNCHY BATTER
- .67 OZ. UNIT
- 12g TOTAL FAT PER 6 MINIS.
- CN LABELED - 6 MINIS SERVE 2 OZ. M/M & 2 OZ. EQUIVALENT GRAINS

CN INFORMATION

CN LABELED - CN NUMBER 089729 - CN DATE 04-14
SIX 0.67 OZ WHOLE GRAIN BATTER WRAPPED MINI CHICKEN FRANKS
PROVIDE 2.00 OZ. EQUIVALENT MEAT AND 2.00 OZ. EQUIVALENT GRAINS.

INGREDIENTS

BATTER: WATER, WHOLE WHEAT FLOUR, WHOLE GRAIN CORN, SUGAR, LEAVENING (SODIUM ACID PYROPHOSPHATE, SODIUM BICARBONATE), SOY FLOUR, SOYBEAN OIL, SALT, EGG YOLK WITH SODIUM SILICOALUMINATE, ASCORBIC ACID, EGG WHITE, DRIED HONEY, ARTIFICIAL FLAVOR. FRIED IN VEGETABLE OIL.
FRANK: MECHANICALLY SEPARATED CHICKEN, WATER, CORN SYRUP SOLIDS, CONTAINS 2% OR LESS OF SALT, SPICES, POTASSIUM LACTATE, POTASSIUM ACETATE, SODIUM PHOSPHATE, POTASSIUM CHLORIDE, FLAVORINGS, SODIUM ERYTHORBATE, SODIUM DIACETATE, SODIUM NITRITE. CONTAINS: WHEAT, SOY, EGGS, AND GLUTEN

PREPARATION

RE HEATING INSTRUCTIONS
DEEP FRYER 350°F - FROZEN: NOT RECOMMENDED; THAWED: 4 MINUTES. QUANTITY - 4
MICROWAVE HIGH (1100 WATTS) - FROZEN: 20-25 SECONDS, TURN THEN 20-25 SECONDS MORE; THAWED: NOT RECOMMENDED. QUANTITY - 6
CONVENTIONAL OVEN 350°F - FROZEN: 21-23 MINUTES; THAWED: NOT RECOMMENDED. QUANTITY - FULL SHEET PAN
CONVECTION OVEN 350°F - FROZEN: 8-10 MINUTES; THAWED: NOT RECOMMENDED. QUANTITY - FULL SHEET PAN
INTERNAL TEMPERATURE OF PRODUCT SHOULD REACH 160°F. CAUTION: PRODUCT WILL BE HOT. TIMES AND TEMPERATURES MAY VARY BASED ON ACTUAL EQUIPMENT AND QUANTITY OF PRODUCT PREPARED. ADJUST ACCORDINGLY.

SHELF LIFE

TOTAL MFR. FROZEN SHELF LIFE IS 365 DAYS FROM DATE OF PACK

Nutrition Facts

Serving Size BASED ON CN SERVING OF 6 MINI CORN DOGS (4 oz.) 112g

Servings Per Container About 40

Amount Per Serving

Calories 270

Calories from Fat 110

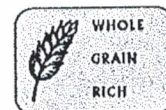
	% Daily Value*
Total Fat 12 g	18%
Saturated Fat 3.5 g	18%
Trans Fat 0 g	
Cholesterol 40 mg	13%
Sodium 410 mg	17%
Total Carbohydrate 30 g	10%
Dietary Fiber 5 g	20%
Sugars 5 g	
Protein 10 g	

Vitamin A 0 %	Vitamin C 0 %
Calcium 15 %	Iron 10 %

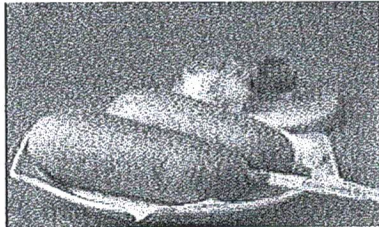
*Percent Daily Values are based on a 2,000 calorie diet. Your daily values may be higher or lower depending on your calorie needs.

	Calories:	2,000	2,500
Total Fat	Less than	65g	80g
Sat Fat	Less than	20g	25g
Cholesterol	Less than	300mg	300mg
Sodium	Less than	2,400mg	2,400mg
Total Carbohydrate		300g	375g
Dietary Fiber		25g	30g

Calories per gram:
Fat 9 • Carbohydrate 4 • Protein 4



**WHOLE GRAIN CHICKEN CORN DOG,
4.0 OZ.,CN, SMART SNACK COMPLIANT**
PRODUCT CODE: 95150



Unit Weight/Count: 4 OZ / 72

Product UPC:

Case GTIN: 00075278951507

Net Case Weight: 18.00 LB

Case Dimensions (LxWxH) O.D: 17 IN x 11.0625 IN
x 6.75 IN

Case Cube: .73 CF

Pallet Configuration: 9 x 8

Cases/Pallet: 72

Case Tare: 1.0 LB

EDI UPC: 007527895150

FEATURES & BENEFITS

- FULLY COOKED LOWER FAT CHICKEN FRANK WRAPPED IN 100% WHOLE GRAIN HONEY CRUNCHY BATTER
- 4.00 OZ. UNIT
- LOWER FAT - 8g FAT PER SERVING
- 390mg SODIUM PER SERVING
- SMART SNACK APPROVED
- CN LABELED - SERVES 2 OZ. M/M & 2 OZ. EQUIVALENT GRAINS

CN INFORMATION

CN LABELED
EACH 4.00 OZ. FOSTER FARMS LOWER FAT CHICKEN CORN DOG PROVIDES 2.00 OZ EQUIVALENT MEAT AND 2.00 OZ. EQUIVALENT GRAINS.

INGREDIENTS

BATTER INGREDIENTS: WATER, WHOLE WHEAT FLOUR, WHOLE GRAIN CORN,
SUGAR, CONTAINS 2% OR LESS OF LEAVENING (SODIUM ACID PYROPHOSPHATE, SODIUM BICARBONATE), SOY FLOUR, SOYBEAN OIL, SALT, EGG YOLK WITH SODIUM SILICOALUMINATE, ASCORBIC ACID, EGG WHITE, DRIED HONEY, ARTIFICIAL FLAVOR, FRIED IN VEGETABLE OIL.
CHICKEN FRANK INGREDIENTS: MECHANICALLY SEPARATED CHICKEN, WATER, CORN SYRUP SOLIDS, CONTAINS LESS THAN 2% OF SPICES, SALT, POTASSIUM LACTATE, POTASSIUM ACETATE, SODIUM PHOSPHATE, POTASSIUM CHLORIDE, FLAVORINGS, SODIUM DIACETATE, SODIUM ERYTHORBATE, SODIUM NITRITE.
CONTAINS: WHEAT, SOY, EGG

PREPARATION

RE HEATING INSTRUCTIONS
DEEP FRYER 350°F - FROZEN: NOT RECOMMENDED; THAWED: 4-5 MINUTES
-QUANTITY - 3
MICROWAVE HIGH (1100 WATTS) - FROZEN: 30 SECONDS, TURN THEN 30 MORE SECONDS; THAWED: 20 SECONDS, TURN THEN 20 MORE SECONDS -
QUANTITY - 2
CONVENTIONAL OVEN 350°F - FROZEN: 34-36 MINUTES ; THAWED 24-26 MINUTES. QUANTITY - FULL SHEET PAN
CONVECTION OVEN 350°F - FROZEN: 24-27 MINUTES ; THAWED 14-17 MINUTES. QUANTITY - FULL SHEET PAN

INTERNAL TEMPERATURE OF PRODUCT SHOULD REACH 160°F. CAUTION: PRODUCT WILL BE HOT. TIMES AND TEMPERATURES MAY VARY BASED ON ACTUAL EQUIPMENT AND QUANTITY OF PRODUCT PREPARED. ADJUST ACCORDINGLY.

SHELF LIFE

TOTAL MFR. FROZEN SHELF LIFE IS 365 DAYS FROM DATE OF PACK

Nutrition Facts

Serving Size 1 CORN DOG (4 oz.) 112g
Servings Per Container 72

Amount Per Serving

Calories 240

Calories from Fat 70

	% Daily Value*
Total Fat 8 g	12%
Saturated Fat 2.5 g	13%
Trans Fat 0 g	
Cholesterol 40 mg	13%
Sodium 390 mg	16%
Total Carbohydrate 30 g	10%
Dietary Fiber 5 g	20%
Sugars 5 g	
Protein 9 g	

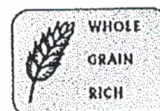
Vitamin A %	*	Vitamin C %
Calcium 8 %	*	Iron 10 %

*Percent Daily Values are based on a 2,000 calorie diet. Your daily values may be higher or lower depending on your calorie needs.

	Calories:	2,000	2,500
Total Fat	Less than	85g	80g
Sat Fat	Less than	20g	25g
Cholesterol	Less than	300mg	300mg
Sodium	Less than	2,400mg	2,400mg
Total Carbohydrate		300g	375g
Dietary Fiber		25g	30g

Calories per gram:

Fat 9 • Carbohydrate 4 • Protein 4





5150021027 - 5.3 OZ PEANUT BUTTER & GRAPE JELLY ON WHEAT BREAD

Creamy Peanut Butter and Smuckers Grape Jelly crimped within a crustless pocket of wheat bread. Each wholesome soft bread sandwich is individually wrapped and frozen for optimal freshness and convenience. Easy to prepare, simply thaw and serve.

Brand: Smucker's®



Nutrition Facts

UNPREPARED 1 servings per container
Serving size 1 Sandwich (150g)

Amount per serving
Calories 600

	% Daily Value*
Total Fat 34g	43%
Saturated Fat 6g	29%
Trans Fat 0g	
Cholesterol 0mg	0%
Sodium 540mg	24%
Total Carbohydrate 64g	23%
Dietary Fiber 7g	2%
Total Sugars 29g	
Includes 25g Added Sugars	50%

Protein 18g

Vitamin D 0mcg 0%	•	Calcium 6mg 6%
Iron 15mg 15%	•	Potassium 484mg 40%

* The % Daily Value (DV) tells you how much a nutrient in a serving of food contributes to a daily diet. 2,000 calories a day is used for general nutrition advice.

Ingredients

Peanut Butter: Peanuts, Sugar, Contains 2% Or Less of: Molasses, Fully Hydrogenated Vegetable Oils (Rapeseed And Soybean), Mono And Diglycerides, Salt. Bread: Unbleached Whole Wheat Flour, Enriched Unbleached Flour (Wheat Flour, Malted Barley Flour, Niacin, Ferrous Sulfate, Thiamin Mononitrate, Riboflavin, Folic Acid), Water, Yeast, Sugar, Soybean Oil, Contains 2% Or Less of: Wheat Gluten, Salt, Dough Conditioners (Distilled Mono And Diglycerides, Sodium Stearoyl Lactylate, DATEM, Enzymes [With Wheat Starch, Ascorbic Acid, Calcium Peroxide]), Grape Jelly: Sugar, Grape Juice, Contains 2% Or Less of: Pectin, Citric Acid, Potassium Sorbate (Preservative).

Product Specifications

GTIN	10051500210274	Case Net Weight	23.85 LB
Item UPC	5150021027	Case L,W,H	17.20 IN, 11.32 IN, 13.89 IN
Unit Size	72 / 5.30Z	Cube	1.57 CF
Shelf Life	270 Days	Tie x High	9 x 3
Case Gross Weight	25.57 LB	Kosher Status	Yes

Preparation and Cooking

Thaw 60 minutes at room temperature. Serve within 8-10 hours for optimal freshness. Do not microwave.

Serving Suggestions

Uncrustables sandwiches make a great lunch, snack or breakfast. Try them for grab & go, in a box lunch or to add some crowd-pleasing variety to snack or lunch menu.

Packaging and Storage

Product must be transported and stored between 10°F and -10°F. Keep frozen. Do not refreeze after thawing. Thaw at room temperature. Do not microwave.

Allergens

CONTAINS:

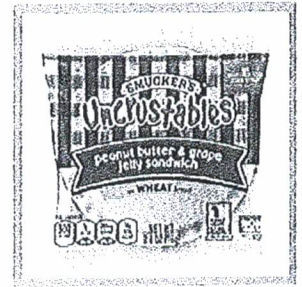
Peanuts or Peanut Derivatives, Wheat or Wheat Derivatives



5150006960 - 2.6 OZ PEANUT BUTTER & GRAPE JELLY ON WHEAT BREAD

Creamy Peanut Butter and Smucker's Grape Jelly crimped within a crustless pocket on wheat bread. Each wholesome soft bread sandwich is individually wrapped and frozen for optimal freshness and convenience.

Brand: Smucker's®



Nutrition Facts

UNPREPARED 1 servings per container
Serving size 1 sandwich (76g)

Amount per serving
Calories 300

	% Daily Value*
Total Fat 17g	21%
Saturated Fat 3g	15%
Trans Fat 0g	
Cholesterol 0mg	0%
Sodium 280mg	12%
Total Carbohydrate 32g	12%
Dietary Fiber 4g	1%
Total Sugars 14g	
Includes 12g Added Sugars	25%

Protein 9g

Vitamin D 0mcg 0%	•	Calcium 2mg 2%
Iron 8mg 8%	•	Potassium 244mg 6%

* The % Daily Value (DV) tells you how much a nutrient in a serving of food contributes to a daily diet. 2,000 calories a day is used for general nutrition advice.

Ingredients

Peanut Butter: Peanuts, Sugar, Contains 2% Or Less of: Molasses, Fully Hydrogenated Vegetable Oils (Rapeseed And Soybean), Mono And Diglycerides, Salt. Bread: Unbleached Whole Wheat Flour, Enriched Unbleached Flour (Wheat Flour, Malted Barley Flour, Niacin, Ferrous Sulfate, Thiamin Mononitrate, Riboflavin, Folic Acid), Water, Sugar, Yeast, Contains 2% Or Less of: Wheat Gluten, Soybean Oil, Salt, Dough Conditioners (Distilled Mono And Diglycerides, Sodium Stearoyl Lactylate, Datem, Enzymes [With Wheat Starch, Ascorbic Acid, Calcium Peroxide],). Grape Jelly: Sugar, Grape Juice, Contains 2% Or Less of: Pectin, Citric Acid, Potassium Sorbate (Preservative).

Product Specifications

GTIN	10051500069605	Case Net Weight	11.70 LB
Item UPC	5150006960	Case L,W,H	15.88 IN, 11.88 IN, 8.50 IN
Unit Size	72 / 2.6OZ	Cube	0.93 CF
Shelf Life	270 Days	Tie x High	10 x 5
Case Gross Weight	13.63 LB	Kosher Status	Yes

Preparation and Cooking

Thaw 60 minutes. Serve within 8-10 hours for optimal freshness. Do not microwave.

Serving Suggestions

Easy to prepare, simply thaw and serve.

Packaging and Storage

Keep frozen. Do not refreeze after thawing.

Allergens

CONTAINS:
Peanuts or Peanut Derivatives, Wheat or Wheat Derivatives