

Monarch Peanut Butter

Nutrition Facts

Serving Size 1 serving (0.75 oz)

Amount Per Serving

Calories **120**

% Daily Values*

Total Fat	11.00g	14%
Saturated Fat	2.000g	10%
Trans Fat	-	

Cholesterol -

Sodium	80mg	3%
---------------	------	-----------

Total Carbohydrate	5.00g	2%
---------------------------	-------	-----------

Dietary Fiber	2.0g	7%
---------------	------	-----------

Sugars	2.00g	
--------	-------	--

Protein	5.00g	
----------------	-------	--

Vitamin D -

Calcium -

Iron -

Potassium -

* The % Daily Value (DV) tells you how much a nutrient in a serving of food contributes to a daily diet. 2,000 calories a day is used for general nutrition advice.

Is this information inaccurate or incomplete?
Click here to edit.

Last updated: 12 Mar 15 03:35 PM

Source: FatSecret Platform API

6% of RDI*
(120 calories)

6% of
RDI

Calorie Breakdown:

Carbohydrate (15%)

Fat (71%)

Protein (14%)

* Based on a RDI of 2000 calories

What is my Recommended Daily Intake (RDI)?

 Photos



+
Sub
Photo

Nutrition summary:

Calories
120

Fat
11g

Carbs
5g

Protein
5g

There are **120 calories** in 1 serving (0.75 oz) of Monarch Peanut Butter.

Calorie breakdown: **71% fat**, 14% carbs, 14% protein.

More Products from Monarch:

Light Meat Tuna

Golden Italian Dressing

Fat Free Italian Dressing

Ranch Dressing

Rice Pilaf

[view all monarch products](#)

Other Types of Peanut Butter:

Reduced Fat Peanut Butter

Smooth Peanut Butter (with Salt)

Chunky Peanut Butter (with Salt)

Reduced Sodium Peanut Butter

Peanut Butter

Smooth Peanut Butter (Reduced Fat)



CREAMY PEANUT BUTTER

Nutrition Facts	
about 71 servings per container	
Serving size	2 Tbsp (32g)
Amount per serving	
Calories	200
% Daily Value*	
Total Fat 16g	21%
Saturated Fat 3.5g	17%
Trans Fat 0g	
Cholesterol 0mg	0%
Sodium 160mg	7%
Total Carbohydrate 7g	2%
Dietary Fiber 2g	8%
Total Sugars 3g	
Includes 2g Added Sugars	3%
Protein 8g	
Vitamin D 0mcg 0%	Calcium 10mg 0%
Iron 0.7mg 4%	Potassium 190mg 4%
*The % Daily Value (DV) tells you how much a nutrient in a serving of food contributes to a daily diet. 2,000 calories a day is used for general nutrition advice.	

INGREDIENTS:
PEANUTS, DEXTROSE,
HYDROGENATED
VEGETABLE OIL (RAPESEED
AND/OR COTTONSEED), SALT.
CONTAINS: PEANUTS.

PACKAGED IN USA
STORE IN A COOL,
DRY PLACE

NET WT. 5 LB (2.26 kg)



230049

121637121



44957

7 58108 01491 6

Sunrich Honey Roasted Sunflower Kernels

SUNFLOWER
HONEY ROASTED

Nutrition Facts

Serving size 1 package (34g)

Amount Per Serving

Calories 190

% Daily Value*

Total Fat 15g 19%

Saturated Fat 1.5g 8%

Trans Fat 0g

Cholesterol 0mg 0%

Sodium 65mg 3%

Total Carbohydrate 11g 4%

Dietary Fiber 3g 11%

Total Sugars 5g

Includes 4g Added Sugars 8%

Protein 6g 8%

Vitamin D 0mcg 0%

Calcium 21mg 2%

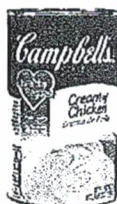
Iron 1mg 6%

Potassium 249mg 6%

Vitamin E 8mg 50%

*The % Daily Value (DV) tells you how much a nutrient in a serving of food contributes to a daily diet. 2,000 calories a day is used for general nutrition advice.

Ingredients: Sunflower Kernels, Sugar, Sunflower Oil. Honey, Salt, Maltodextrin, Xanthan Gum



Case Code
04143

Pack & Size
12/50 OZ.



Nutrition Facts

Serving Size **1/2 CUP (120 ML)**
CONDENSED

Amount Per Serving

Calories 70 Calories from Fat 25

% Daily Value

Total Fat 2.5g 4%

Saturated Fat 0.5g 3%

Trans Fat 0g

Polyunsaturated Fat 1g

Monounsaturated Fat 1g

Cholesterol 5mg 2%

Sodium 390mg 16%

Potassium 280mg 8%

Total Carbohydrate 9g 3%

Dietary Fiber 0g 0%

Sugars 0g

Protein 2g

Vitamin A 10% Vitamin C 0%

Calcium 0% Iron 0%

* Percent Daily Values are based on a 2,000 calorie diet. Nutrition Facts are based on our current data. However, because the data may change from time to time, this information may not always be identical to the Nutrition Facts table found on the labels of products. Information is true and accurate as of: 01/08/2018

INGREDIENTS

INGREDIENTS: CHICKEN STOCK, MODIFIED FOOD STARCH, WHEAT FLOUR, CHICKEN MEAT, CREAM (MILK), CONTAINS LESS THAN 2% OF: VEGETABLE OIL, CARROT JUICE CONCENTRATE, SALT, WATER, POTASSIUM CHLORIDE, SOY PROTEIN CONCENTRATE, YEAST EXTRACT, CHICKEN BROTH*, CANE SUGAR, FLAVORING, TURMERIC FOR COLOR, ONIONS*, CHICKEN FAT, SOY PROTEIN ISOLATE, SODIUM PHOSPHATE, CELERY EXTRACT, CHICKEN*, ONION EXTRACT. *DEHYDRATED

Campbell's

CLASSIC SOUPS

Campbell's® Healthy Request® condensed Cream of Chicken Soup offers the rich traditional flavor of cream of chicken soup with a more nutritious profile.

FEATURES AND BENEFITS

Easy to prepare - just reconstitute with waterVersatile - use as-is, amped up or as an ingredientSame great flavor as the Campbell's® condensed 50 oz can, but meets specific nutritional criteria

SERVING IDEAS

See brochure or website for recipes - featured recipe for this soup is Glazed Turkey Meatloaf.

PREPARATION

Dry storage, mix 1 can of soup with 1 can of water, heat stirring occasionally. For richer soup mix 1/2 can water and 1/2 can milk.

HANDLING

Promptly refrigerate unused portion in a separate container.

STORAGE

Shelf Life: 730

Storage Temperature: 70F

MORE

Easy to prepare - just reconstitute with waterVersatile - use as-is, amped up or as an ingredientSame great flavor as the Campbell's® condensed 50 oz can, but meets specific nutritional criteria

PACKAGING DETAILS

Pack & Size:	12/50 OZ.	Case Weight:	42.99 LB	UPC:	51000041432
Cube:	0.918 FT	Case Size:	17IN x 12.875IN x 7.25IN (L x W x H)	SCC-14:	10051000041439

ALLERGENS

MILK, SOY, WHEAT

SPECIAL DIETARY NEEDS

100 calories or less per serving; Good source of Vitamin A; Heart Healthy/Healthy Request; Low Fat; Sodium 141 - 480 mgs; Zero Trans Fats

CAMPBELL'S® CLASSIC HEALTHY REQUEST® TOMATO



Case Code
04145

Pack & Size
12/50 OZ.

Campbell's

CLASSIC SOUPS

Campbell's(R) Healthy Request(R) condensed Tomato soup offers the rich traditional flavor of tomato soup with a more nutritious profile.

Nutrition Facts

Serving Size	1/2 CUP (120 ML)
	CONDENSED
Amount Per Serving	
Calories 90	Calories from Fat
	% Daily Value
Total Fat 1g	1%
Saturated Fat 0g	0%
Trans Fat 0g	
Polyunsaturated Fat 0.5g	
Monounsaturated Fat 0g	
Cholesterol 0mg	0%
Sodium 390mg	17%
Potassium 230mg	4%
Total Carbohydrate 18g	7%
Dietary Fiber 1g	4%
Sugars 10g	
Protein 2g	
Vitamin C 10%	Calcium 0%
Iron 2%	

* Percent Daily Values are based on a 2,000 calorie diet. Nutrition Facts are based on our current data. However, because the data may change from time to time, this information may not always be identical to the Nutrition Facts table found on the labels of products. Information is true and accurate as of: 09/25/2018

FEATURES AND BENEFITS

Easy to prepare - just reconstitute with waterVersatile - use as-is, amped up or as an ingredientSame great flavor as the Campbell's® condensed 50 oz can, but meets specific nutritional criteria

SERVING IDEAS

• Serve as an appetizer or as a meal• Excellent for use on soup and salad bars• Ideal for Schools and Healthcare

PREPARATION

Dry storage, mix 1 can of soup with 1 can of water, heat stirring occasionally.

HANDLING

Promptly refrigerate unused portion in a separate container.

STORAGE

Shelf Life: 730

Storage Temperature: 70F

MORE

Easy to prepare - just reconstitute with waterVersatile - use as-is, amped up or as an ingredientSame great flavor as the Campbell's® condensed 50 oz can, but meets specific nutritional criteria

PACKAGING DETAILS

Pack & Size:	12/50 OZ.	Case Weight:	42.99 LB	UPC:	51000041456
Cube:	0.918 FT	Case Size:	17IN x 12.875IN x 7.25IN (L x W x H)	SCC-14:	10051000041453

ALLERGENS

WHEAT

SPECIAL DIETARY NEEDS

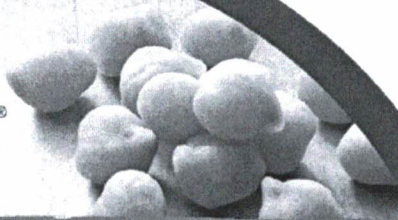
100 calories or less per serving; Good source of Vitamin C; Heart Healthy/Healthy Request; Low Fat; Sodium 141 - 480 mgs; Zero Trans Fats

INGREDIENTS

INGREDIENTS: TOMATO PUREE (WATER, TOMATO PASTE), WATER, WHEAT FLOUR, SUGAR, CONTAINS LESS THAN 2% OF: SALT, VEGETABLE OIL (CORN, CANOLA, AND/OR SOYBEAN), CITRIC ACID, ASCORBIC ACID (VITAMIN C), FLAVORING, CELERY EXTRACT, GARLIC OIL.



Sabra®



CLASSIC HUMMUS

Nutrition Facts Servings: 1, **Serv. size: 2 oz (57g)**, Amount per serving:
Calories 150, Total Fat 11g (14% DV), Sat. Fat 1.5g (8% DV), *Trans Fat* 0g,
Cholest. 0mg (0% DV), **Sodium** 250mg (11% DV), **Total Carb.** 9g (3% DV),
Fiber 3g (11% DV), Total Sugars 0g (Incl. 0g Added Sugars, 0% DV), **Protein** 4g,
Vit. D (0% DV), Calcium (2% DV), Iron (6% DV), Potas. (4% DV).

INGREDIENTS: COOKED CHICKPEAS (WATER, CHICKPEAS), WATER, TAHINI (GROUND SESAME),
SOYBEAN OIL, GARLIC, SALT, CITRIC ACID, POTASSIUM SORBATE TO MAINTAIN FRESHNESS.

Sabra Dipping Company, LLC
White Plains, NY 10604

www.sabra.com
☎ 1-888-95-SABRA



**KEEP REFRIGERATED
GLUTEN FREE**



2100607-T004



**NET WT. 2 OZ
(57g)**



KRONOS CENTRAL PRODUCT

Hummus

HUMMUS, PLAIN CARTON REF CLASSIC

3457066

2/4 LB

ADD TO ORDER

Quantity Available
CS: 105

Next Expected Restock
07/21

Product Description

Additional Description

KRONOS HUMMUS IS SUPERIOR IN FLAVOR AND CONSISTENCY. IT APPEALS TO HEALTH CONSCIOUS AND VEGETARIANS AS IT IS A MEDITERRANEAN FOOD THAT IS HIGH IN PROTEIN. OUR CLASSIC HUMMUS CONSISTS OF CHICKPEAS, SESAME TAHINI AND MEDITERRANEAN SEASONINGS.

Ingredients

CHICKPEAS CHICKPEAS, WATER, WATER, CANOLA OIL WITH NATURAL ROASTED GARLIC FLAVOR, SESAME TAHINI, SEA SALT, CITRIC ACID, SPICES, SODIUM BENZOATE AND POTASSIUM SORBATE TO PRESERVE FRESHNESS.

Product Information

Class: 26 - GROCERY, REF & FZN
Category: 178 - DIPS & SPREADS, NON-DAIRY, REF & FZN
Group: 3640 - SPREADS & DIPS, NON-DAIRY, REFRIGERATED

Manufacturer Information

KRONOS FOODS
Manufacturer Product #: 383452

Preparation & Cooking

Preparations and Cooking Instructions

NO COOKING PREPARATION NEEDED. JUST REMOVE FROM REFRIGERATION, STIR, SPOON INTO DISH OR ONTO DESIRED FOOD ITEM AND SERVE.

Handling Instructions

Receive and store refrigerated

Serving Suggestions:

Serve hummus in a serving dish and use as a dip for vegetables or pita bread. You can also spread it on a pizza crust to replace tomato sauce on a vegetarian pizza or use it as a spread on a sandwich.

Shipping Information

Physical Attributes				Storage Information	
Gross Weight:	9 LB	Length:	13.938 IN	USF Storage:	REF 33 - 40
Net Weight:	8 LB	Cube:	.31 CF		NOT RAW
Height:	5.25 IN	Catch Weight:	No	Min. Temperature:	33 fa
Width:	7.313 IN			Max. Temperature:	40 fa

Nutrition Facts

146 Servings Per Container		
Serving Size		(28gr)
Amount Per Serving		
Calories		80
		% Daily Value *
Total Fat	6g	9%
Saturated Fat	0g	0%
Trans Fat	g	
Cholesterol	0mg	0%
Sodium	110mg	5%
Total Carbohydrate	4g	1%
Dietary Fiber	3g	12%
Total Sugars	0g	
Includes 0g Added Sugars		0%
Protein	2g	
Vitamin A		0%
Vitamin C		0%
Calcium		2%
Iron		2%

Supplemental Facts

	% Daily Value *
Vitamin D	0mcg 0%
Folic Acid	0mcg 0%
Polyunsaturated Fat	2g 0%
Soluble Fiber	0g 0%
Insoluble Fiber	0g 0%
Potassium	75mg 2%
Riboflavin	0mg 0%
Zinc	0mg 0%

* The % Daily Value (DV) tells you how much a nutrient in a serving of food contributes to a daily diet. 2,000 calories a day is used for general nutrition advice.

Report Discrepancies

Ingredients, Allergens & Nutrition Information

IMPORTANT: Product information, including ingredients, allergens and nutritional information, is provided by manufacturers/suppliers, and includes information from the Global Data Synchronization Network (GDSN) and other third party sources such as the United States Department of Agriculture. We know that allergen information is important to many customers,

Kraft Heinz**Product Summary Report**
*Confidential***Maxwell House - DECAFFEINATED
INSTANT COFFEE**Spec Number (Rev): 5492879 (001)
Specification Status: Approved - ActiveEffective Date: 2018-06-14
Last Modified On: 2018-02-01**Product Information**

Product Net Content NET WT 6 lb (2.72kg)
 Product Code 89292
 Product GTIN 00043000892923

Ingredient Declaration Section

DECAFFEINATED COFFEE.

Dietary Suitability

	Agency Name	Designation	Symbol for Label	Document Number	Comments
Halal					
Kosher	OK	Passover Pareve	OK-P	DXMHCQB	5491357-001
Organic					

Nutrition Information

100g or 100mL Information:

Nutrient	UOM	Per 100 grams unrounded
----------	-----	-------------------------

Shipping and Storage Conditions

Shelf Life 450 days
 Shipping Requirements Ambient
 Storage Requirements Ambient

Primary Packaging

Packaging Type Case

Packaging Features

Easy Opening	Not Available
Package Integrity	Sealed Shipper
Reclosability	Not Available

Net Weight 6.0 lb

Dimensions

Width	9.5 in
Length	19.0 in
Height	7.75 in

Technical Data**Descriptive Characteristics**

Descriptive Evaluation	Description
------------------------	-------------

Please Note: This specification is provided for information purposes only and should not be relied upon as a basis for product performance. It is suggested you evaluate the product prior to its commercial usage. This specification is up to date at the populated date run if the spec status is Current. Approved Status specifications are awaiting commercialization.



SWANSON® NATURAL GOODNESS - CHICKEN BROTH

Case Code
11334

Pack & Size
12 / 49 OZ



Swanson® Natural Goodness - Chicken Broth is full of rich chicken flavor but has 1/3 less sodium than our regular broth and is 100% fat free.* This soup is part of our Wellness Collection.

Nutrition Facts

Serving Size	1 CUP (240 ML)
Amount Per Serving	
Calories 15	Calories from Fat 0
	% Daily Value
Total Fat 0g	0%
Saturated Fat 0g	0%
Trans Fat 0g	
Polyunsaturated Fat 0g	
Monounsaturated Fat 0g	
Cholesterol 0mg	0%
Sodium 570mg	24%
Potassium 300mg	9%
Total Carbohydrate 1g	0%
Dietary Fiber 0g	0%
Sugars 1g	
Protein 2g	
Vitamin A 0%	Vitamin C 0%
Calcium 0%	Iron 2%

* Percent Daily Values are based on a 2,000 calorie diet. Nutrition Facts are based on our current data. However, because the data may change from time to time, this information may not always be identical to the Nutrition Facts table found on the labels of products. Information is true and accurate as of: 04/27/2011

INGREDIENTS

INGREDIENTS: CHICKEN STOCK, CONTAINS LESS THAN 2% OF: SALT, YEAST EXTRACT, DEXTROSE, FLAVORING, CHICKEN FLAVOR, CORN SYRUP SOLIDS, CHICKEN FAT, SOY LECITHIN, DEHYDRATED CHICKEN BROTH.

FEATURES AND BENEFITS

100% FAT FREE 33% LESS SODIUM THAN OUR REGULAR PRODUCT* (860 mg vs. 570 mg)* REGULAR SWANSON CHICKEN BROTH CONTAINS 860 mg OF PER SERVING. THIS PRODUCT CONTAINS 570 mg PER SERVING SEE NUTRITION INFORMATION FOR SODIUM CONTENT NO MSG ADDED** SMALL AMOUNT OF GLUTAMATE OCCURS NATURALLY IN YEAST EXTRACT

SERVING IDEAS

* For more flavorful dishes, use Swanson broth instead of water, when simmering vegetables, rice, potatoes or pasta. When roasting, baste with Swanson broth for moist, tender, flavorful meats. Swanson broth also makes a great soup starter. Visit SwansonBroth.com

PREPARATION

Do not dilute. Pour contents into saucepan. Heat slowly until hot, stirring occasionally.

HANDLING

PROMPTLY REFRIGERATE ANY UNUSED PORTION IN A SEPARATE CONTAINER.

STORAGE

Shelf Life: 2 YEARS: USE BY DATE ON THE TOP OF EVERY CAN

Storage Temperature: 72°F

MORE

100% FAT FREE 33% LESS SODIUM THAN OUR REGULAR PRODUCT* (860 mg vs. 570 mg)* REGULAR SWANSON CHICKEN BROTH CONTAINS 860 mg OF PER SERVING. THIS PRODUCT CONTAINS 570 mg PER SERVING SEE NUTRITION INFORMATION FOR SODIUM CONTENT NO MSG ADDED** SMALL AMOUNT OF GLUTAMATE OCCURS NATURALLY IN YEAST EXTRACT

PACKAGING DETAILS

Pack & Size:	12 / 49 OZ	Case Weight:	42.24 LB	UPC:	51000113344
Cube:	0.918 FT	Case Size:	17IN x 12.875IN x 7.25IN (L x W x H)	SCC-14:	10051000113341

ALLERGENS

SOY

SPECIAL DIETARY NEEDS

100 calories or less per serving; 15 grams total carbohydrates or less per serving; 250 calories or less per serving; 9 grams total carbohydrates or less per serving; Low Fat; Sodium 481 - 800 mgs.