

Draft B complies with the basic districting criteria and incorporates the following direction, public input and Communities of Interest (COI):

- District C was part of a submitted districting plan and keeps together the neighborhoods of Jackson Triangle, with Harder/Tennyson and Whitman/Mocine.
- District D was part of a submitted districting plan and incorporates the unincorporated areas of Cherryland, Castro Valley, and parts of Fairview in a single district. Fairview is divided but the split maintains the Fairview elementary school feeder pattern. This district aims to incorporate the public map submission as much as possible.
- An east Hayward COI was kept whole in District E
- Most of a west Hayward COI was kept intact in District A, adding the whole regions of the Palma Ceia and RUUS elementary school attendance areas and using feeder patterns.
- District B was made by combining the elementary school attendance areas and using feeder patterns of the Longwood, Eden Gardens, and Schafer elementary schools.

Hayward USD - Draft B

Plan Layers

HaywardUSD_Schools

- Other
- Elementary School
- Middle School
- High School

HaywardUSD_DraftB

- A
- B
- C
- D
- E

basemap

Highways

- Highways
- Secondary Roads
- Hayward USD

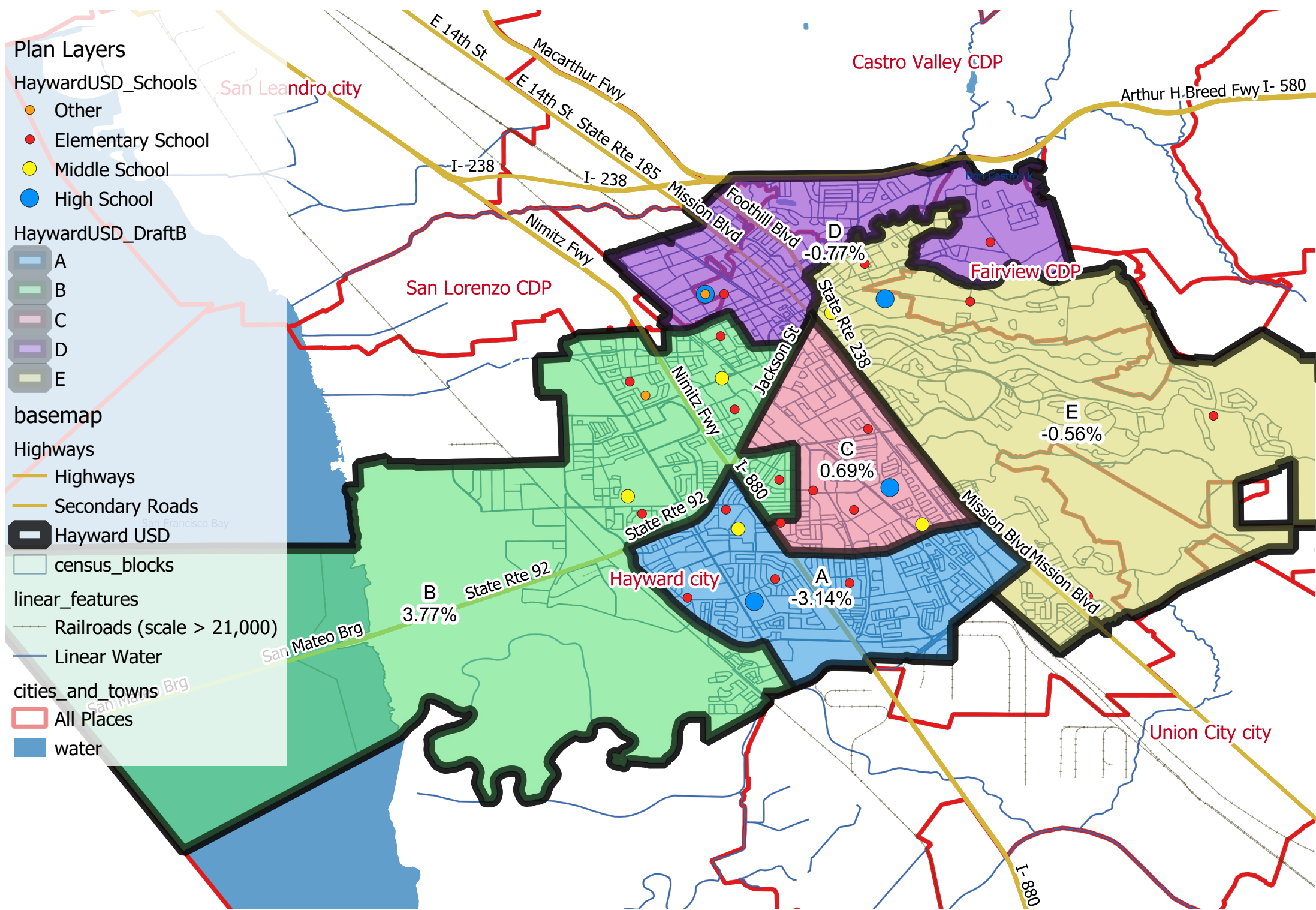
census_blocks

linear_features

- Railroads (scale > 21,000)
- Linear Water

cities_and_towns

- All Places
- water



Hayward Unified School District - Draft Plan B (5/29/2024)

Draft Plan B - District	Total Population	Deviation	% Deviation	Total Citizen Voting Age Population	Total Registration as of Nov 2022
A	36,096	-1,171	-3.14%	24,622	19,126
B	38,673	1,406	3.77%	24,419	18,814
C	37,526	259	0.69%	18,407	14,724
D	36,979	-288	-0.77%	23,381	18,179
E	37,059	-208	-0.56%	27,253	20,405

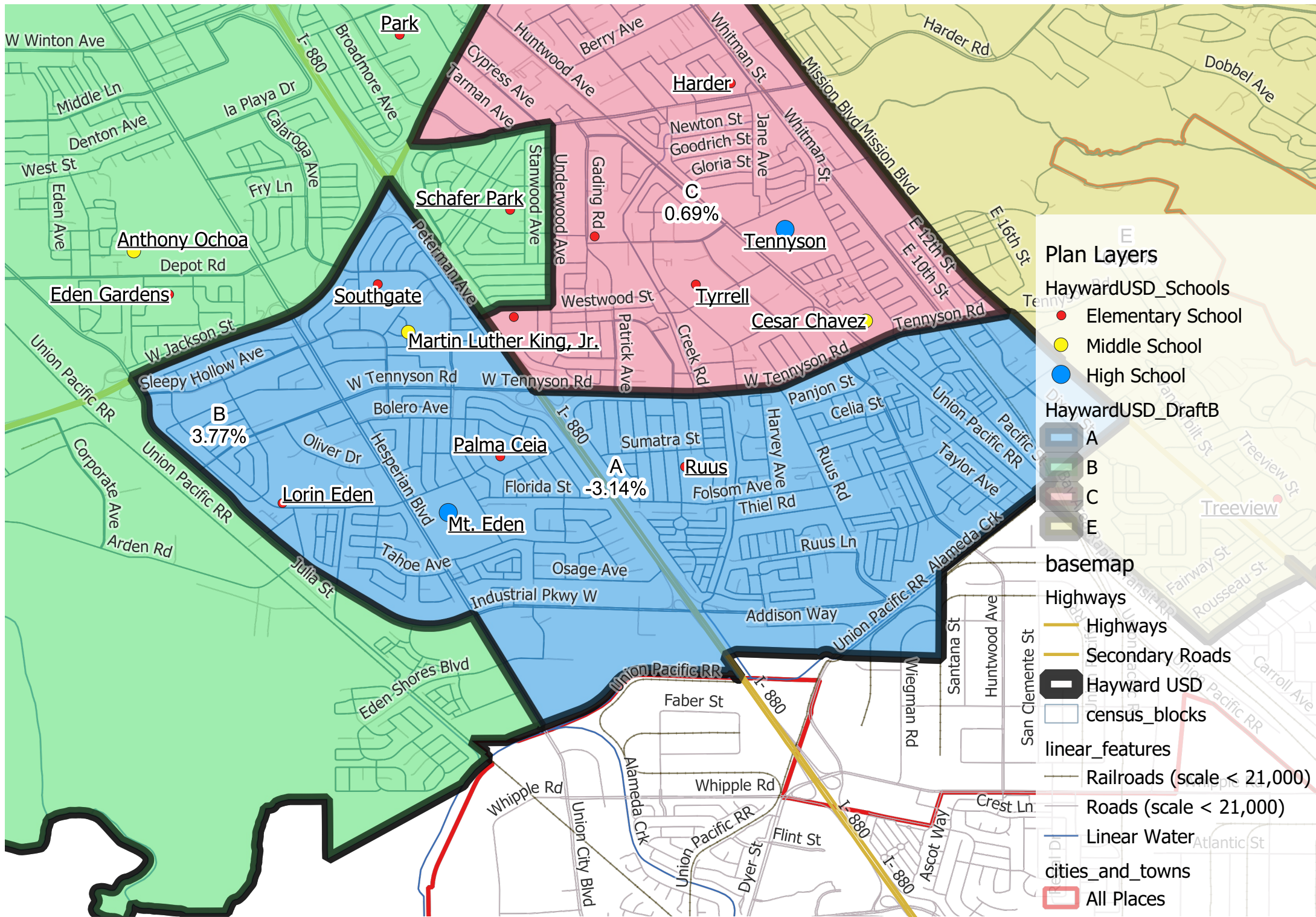
Ideal District	
Population = 186,333 /	
5 Districts:	37,267
<i>Lowest District Dev %:</i>	-3.14%
<i>Highest District Dev %:</i>	3.77%
Total Plan Range	6.91%

Source: CA Adjusted 2020 Census Data, Citizen Voting Age Population Data, and Nov 2022 Registration Data via the CA Statewide Database

Citizen Voting Age Population						
Draft Plan B - District	% Latino CVAP	% White CVAP	% Black CVAP	% Indigenous CVAP	% Asian CVAP	% Hawaiian or Other Pac. Is. CVAP
A	33.0%	14.9%	8.5%	0.1%	37.7%	3.7%
B	34.3%	16.8%	9.1%	1.0%	35.9%	1.6%
C	41.2%	17.0%	13.3%	0.4%	23.1%	3.1%
D	27.4%	32.3%	20.2%	0.6%	17.0%	1.4%
E	20.5%	32.1%	15.6%	0.9%	29.0%	1.1%

Source: Citizen Voting Age Population (CVAP) Special Tabulation from the 2018-2022 5-Year American Community Survey via CA Statewide Database

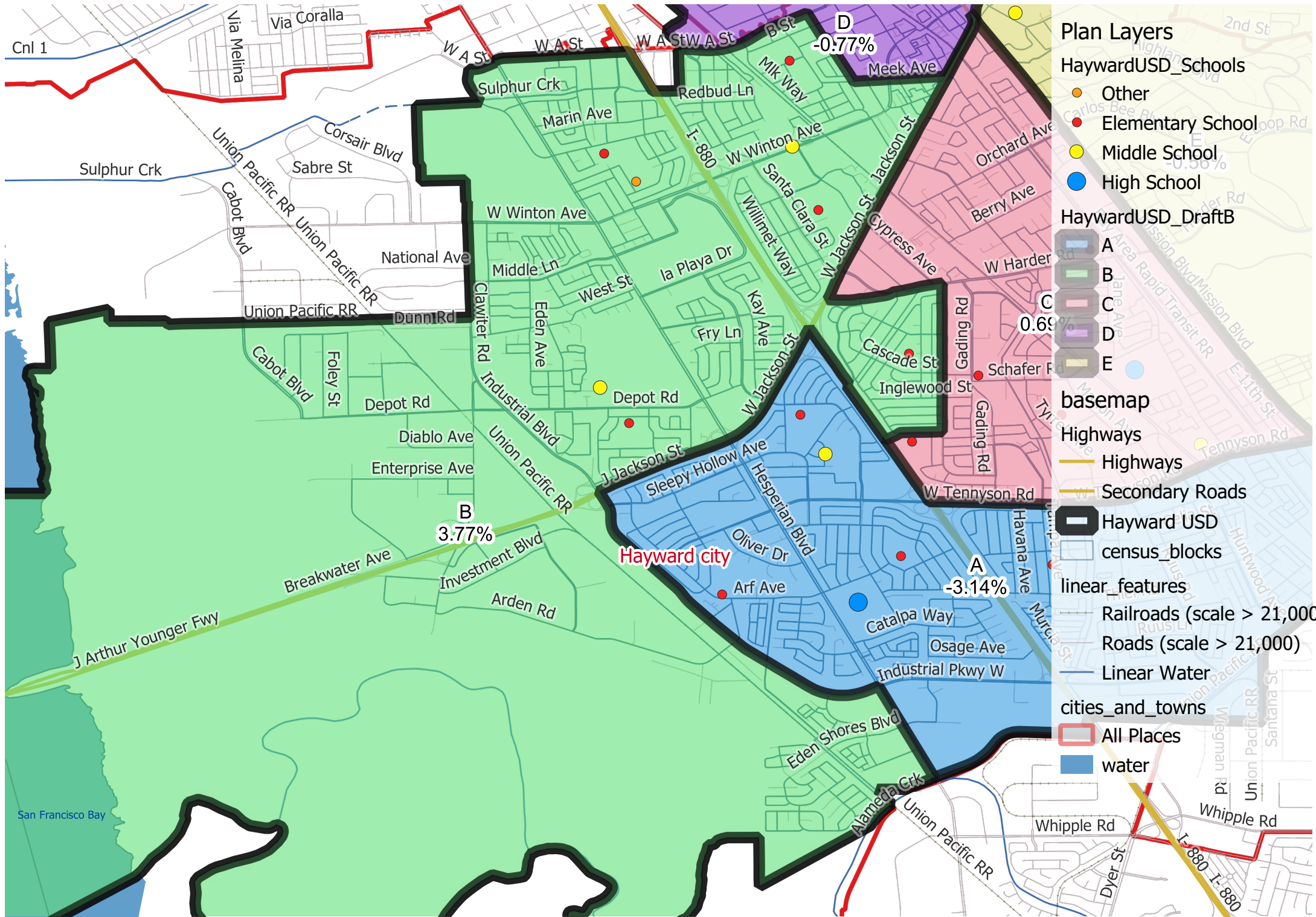
Note: Racial and ethnic characteristics of the Citizens Voting Age Population (CVAP) are tabulated according to Department of Justice standards.



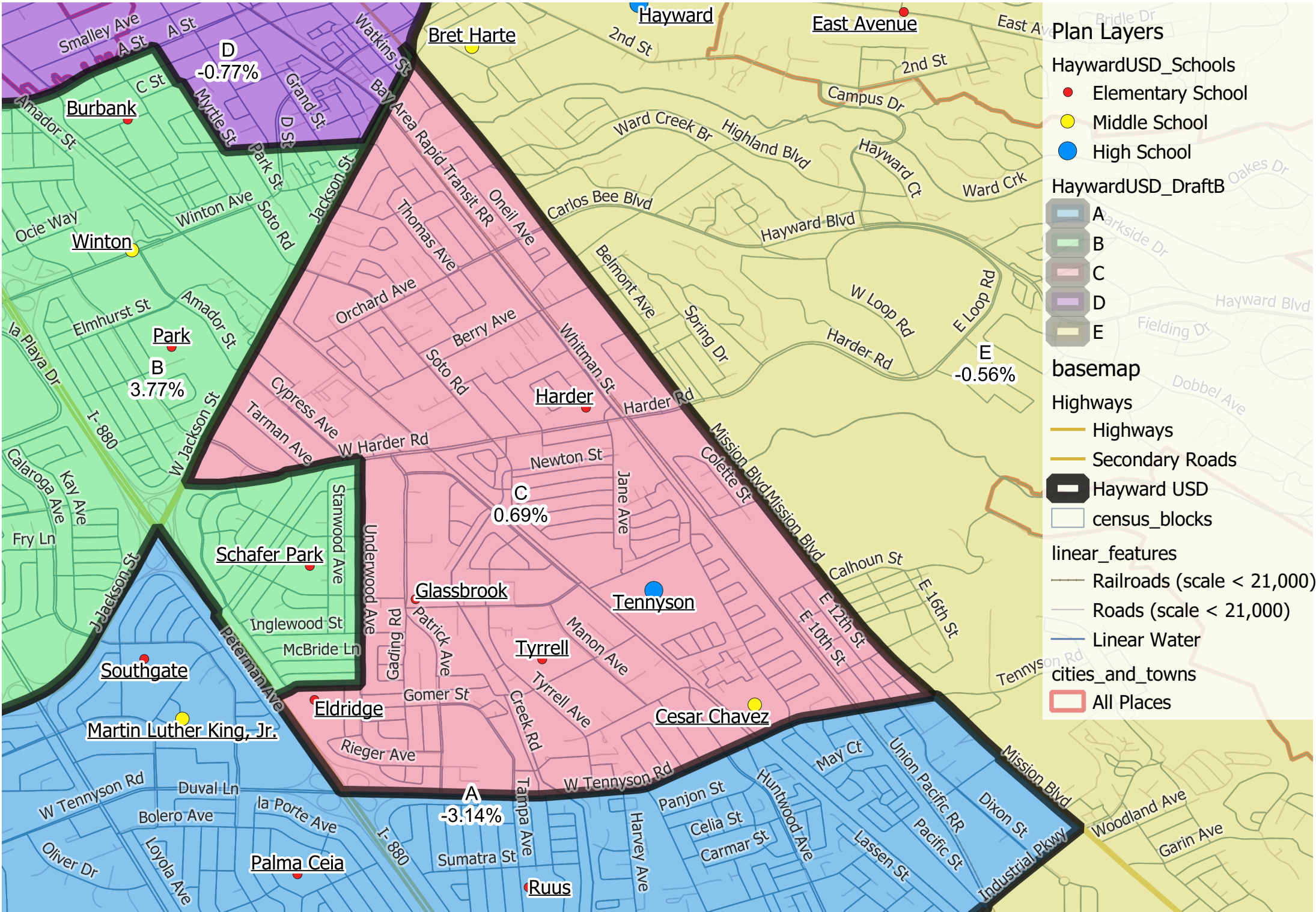
Plan Layers

- HaywardUSD_Schools
 - Elementary School
 - Middle School
 - High School
- HaywardUSD_DraftB
 - A
 - B
 - C
 - E
- basemap
 - Highways
 - Secondary Roads
 - Hayward USD
 - census_blocks
- linear_features
 - Railroads (scale < 21,000)
 - Roads (scale < 21,000)
 - Linear Water
- cities_and_towns
 - All Places

Hayward USD - Draft Plan Draft B. District B



- Plan Layers**
- HaywardUSD_Schools**
 - Other
 - Elementary School
 - Middle School
 - High School
- HaywardUSD_DraftB**
 - A
 - B
 - C
 - D
 - E
- basemap**
- Highways**
 - Highways
 - Secondary Roads
- Hayward USD**
 - census_blocks
- linear_features**
 - Railroads (scale > 21,000)
 - Roads (scale > 21,000)
 - Linear Water
- cities_and_towns**
 - All Places
 - water



- Plan Layers**
- HaywardUSD_Schools**
 - Elementary School
 - Middle School
 - High School
- HaywardUSD_DraftB**
 - A
 - B
 - C
 - D
 - E
- basemap**
- Highways**
 - Highways
 - Secondary Roads
- Hayward USD**
- census_blocks**
- linear_features**
 - Railroads (scale < 21,000)
 - Roads (scale < 21,000)
 - Linear Water
- cities_and_towns**
 - All Places

Hayward USD - Draft Plan Draft B. District D

Plan Layers

HaywardUSD_Schools

- Other
- Elementary School
- Middle School
- High School

HaywardUSD_DraftB

- B
- C
- D
- E

basemap

Highways

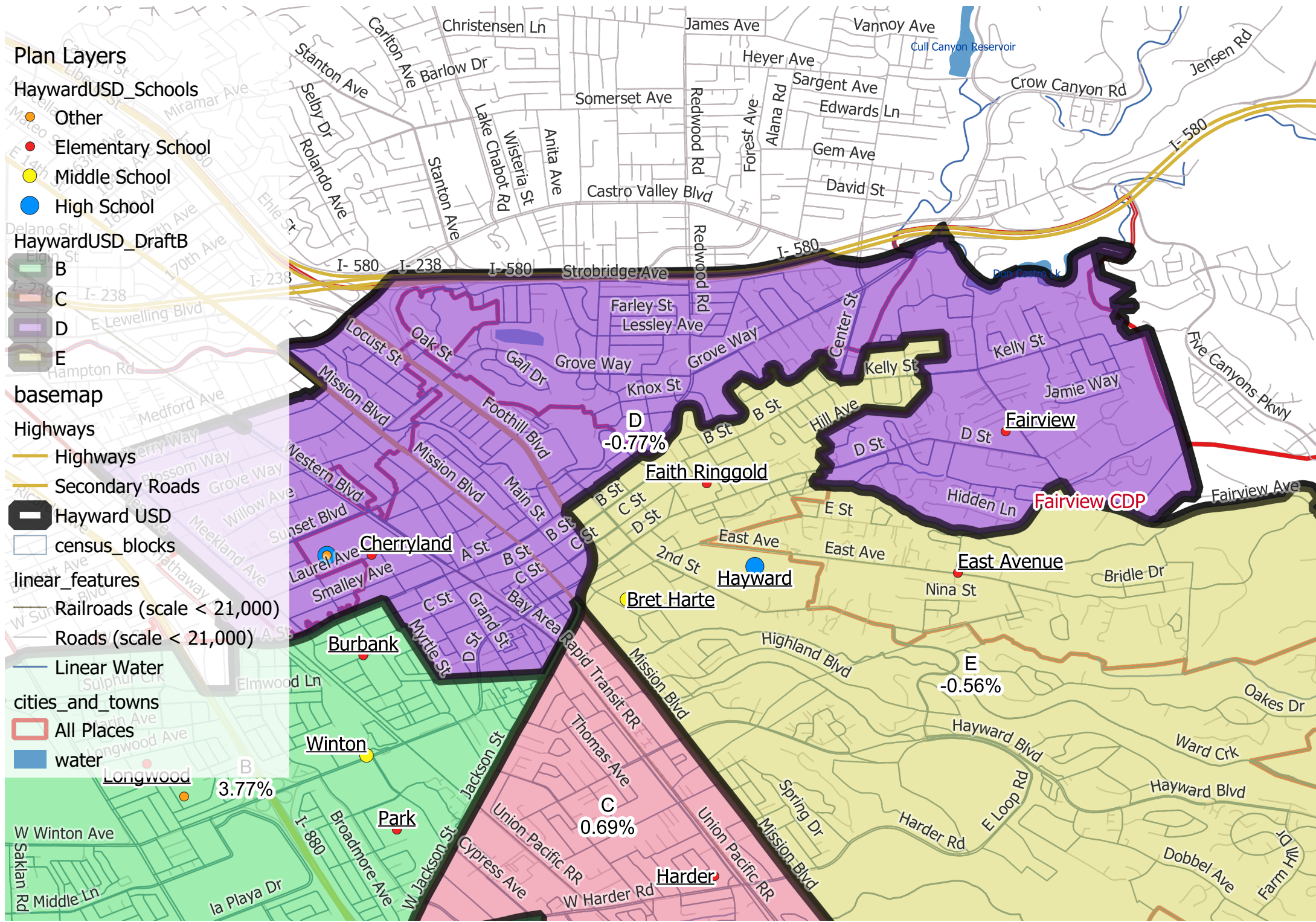
- Highways
- Secondary Roads
- Hayward USD

census_blocks

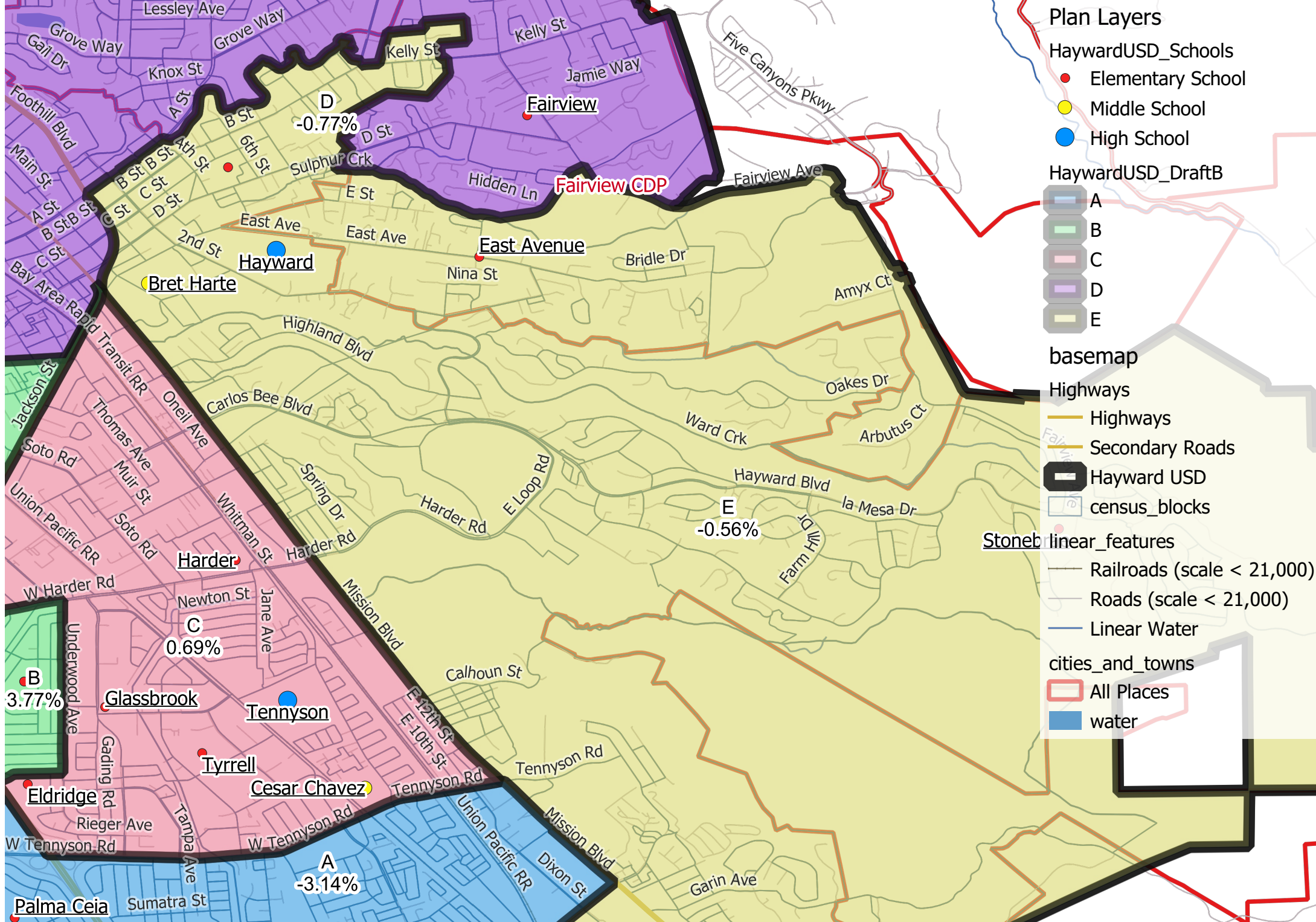
- Railroads (scale < 21,000)
- Roads (scale < 21,000)
- Linear Water

cities_and_towns

- All Places
- water



Hayward USD - Draft Plan Draft B. District E



- ### Plan Layers
- HaywardUSD_Schools
 - Elementary School
 - Middle School
 - High School
 - HaywardUSD_DraftB
 - A
 - B
 - C
 - D
 - E
 - basemap
 - Highways
 - Secondary Roads
 - Hayward USD
 - census_blocks
 - Stoneb linear_features
 - Railroads (scale < 21,000)
 - Roads (scale < 21,000)
 - Linear Water
 - cities_and_towns
 - All Places
 - water