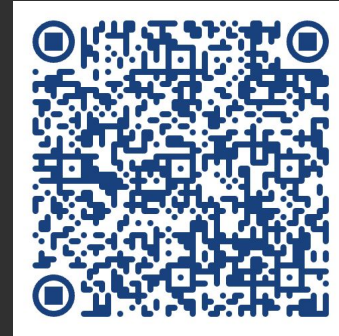


Advanced Math Program

at Boulder Universal

2024-2025



**QR Code for
Presentation**

INTRODUCTIONS

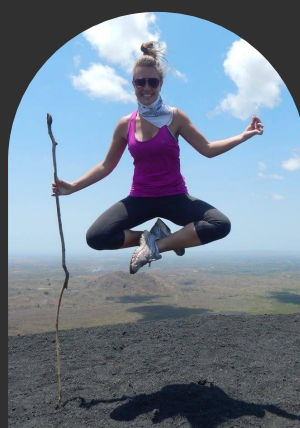
Boulder Universal



Eric Moroye
Principal



Kris Kim
Assistant Principal



Amber Monroe
AMP Teacher



Sarah Stone
AMP Teacher



TABLE OF CONTENTS

1. Why was AMP created?
2. What to expect in the program and math classes
3. BU Advanced Math Data (2023-2024)
4. Upcoming Dates
5. Questions: Note Cards



AMP Originated in **Fall 2021**



District

Initiated by district leadership



Equitable

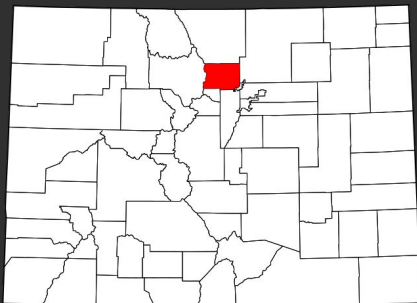
Provides equitable access to advanced math for all schools



Support

Supports schools to offer advanced math when schools do not have FTE to teach in house





24 BVSD Schools

Are participating in AMP this upcoming school year

Lafayette	Foothill	Superior	Eisenhower
BCSIS	Columbine	University Hill	Pioneer
Community Montessori	Heatherwood	Coal Creek	Whittier
Meadowlark	Kohl	Flatirons	Sanchez
Monarch PK8	Louisville	Douglass	Mesa
BHMS	Nederland	Birch	LMS



BU AMP COURSE OFFERING 24-25

4/5 Compacted
4th grade and 5th grade

4/5

Advanced 1
6th grade and half of 7th grade

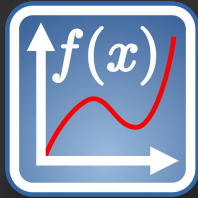
Adv 1

Accelerated 7th
7th and 8th grade math

7A



DATA BASED INSTRUCTION



Content Level & Beyond

Students are learning and mastering fast paced content level standards and sometimes beyond grade level



Data Backed Success

Previous and current year successes measured using Diagnostic Data, Formative, and Summative Assessments



WHAT TO EXPECT



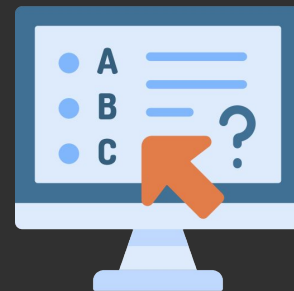
Collaboration

Opportunities for exploration during lessons such as gallery walks, two-minute partner share, group problem solving, and breakout room collaborative structures



Daily Instruction

LIVE Guided Instruction and feedback used to build math concepts along with positive relationships and rapport with students



Interactive Practice

Daily opportunities for practice during live lessons, warm-ups, and homework providing instant feedback for students



A TYPICAL MATH CLASS



Login to Google Meet

Student logs into Google Meet with a Chromebook and headphones during assigned class time



Warm-Up

Students complete a warm-up as they join the class



Interactive Lesson

Students participate in an engaging lesson that includes virtual and in-person group collaboration and notetaking



Start Homework

Students start their online math homework to practice material for the day and are able to ask the teacher questions as needed

Learning Leader Support Available Throughout Entire Class



STUDENT EXPECTATIONS

Engaged

Effort

Self Advocate

Responsible

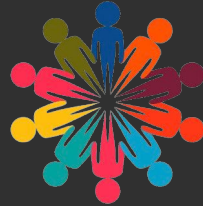


SCHOOL BASED LEARNING LEADER



Student Support

Provides in-person support of students when needed and communicates with BU math teacher



Collaboration Support

Assists students with group work and independent work during lessons and activities



Technology Support

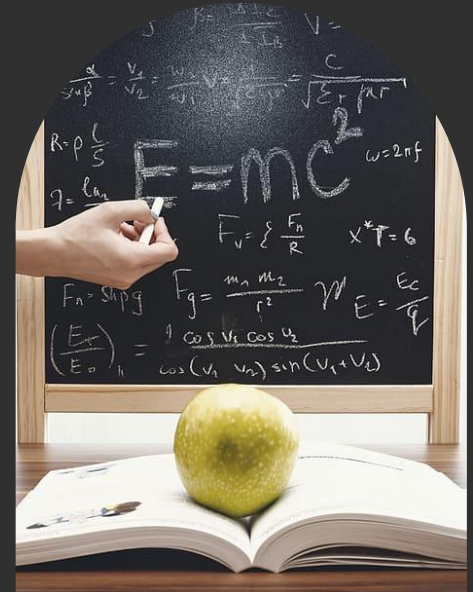
Provides on the spot Chromebook support when needed



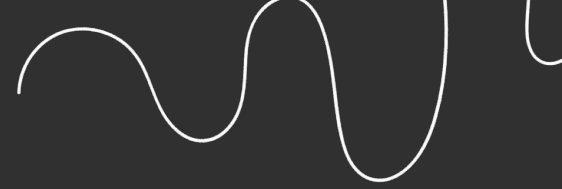
BU TEACHER COMMUNICATION

Clear Math Teacher communication throughout the year such as:

- ★ Newsletters to Parents
- ★ 1:1 Parent-Teacher meetings as needed
- ★ Recurring Communication to Principals, classroom Teachers, and Learning Leaders
- ★ Student to Teacher communication in Schoology



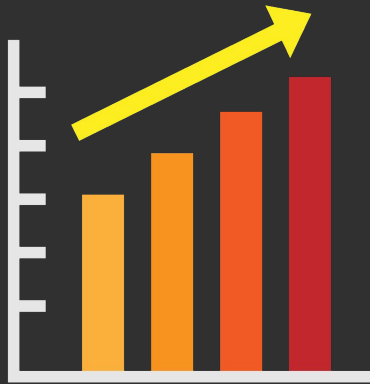
FAMILY CONSIDERATIONS



- ★ All advanced math classes move at an accelerated pace, assuming mastery of prerequisite skills upon entry
 - *3rd grade standards mastered for 4/5 Math*
 - *5th grade standards mastered for Advanced 1 Math*
 - *6th grade standards mastered for Accelerated 7th Math*
- ★ Homework is practice and will be assigned most days to create mastery of standards
- ★ Courses are compacted and fast-paced which at times may lead to productive struggle
- ★ All classes require mastery of multiplication facts, fractions, and decimals
- ★ The outcome of each advanced class is directly tied to students' dedication and interest. Without a strong passion for math and a consistent effort, the year may prove extra challenging.



ADVANCED 1 MATH DATA (23-24)



- ★ iXL Growth Data: ($n=114$)
 - 82% of students had >1 year in math growth
 - 38% of students had >1.5 years in math growth
 - Average growth score for all students = 136 or 1.36 years
- ★ iXL End of Year (EOY) Scores: ($n=119$)
 - Average EOY score = 740 or mid-7th grade math
 - 83% of students scored 700 or higher on EOY iXL



4/5 MATH DATA (23-24)

- ★ iXL Growth Data: ($n=104$)
 - Average growth score for all students = 140 or 1.4 years
 - 80% of students had >1 year in math growth
- ★ iXL End of Year (EOY) Scores: ($n=104$)
 - Average EOY score = 620 or beginning of 6th grade math
 - 80% of students scored 550 or higher, half-way through 5th grade math and more



UPCOMING EVENTS



May

AMP Open House with
Teacher Meet and Greet



August

BU Virtual Open House



August

BU Math Teachers visit
schools, meet teachers,
send welcome letters to
parents, and students get
math goodies

Ongoing: Opportunities for virtual coffee with BU Administrators





Questions?



THANK YOU!

If you have any other specific questions regarding the class, feel free to reach out!

- ★ Eric Moroye (eric.moroye@bvsd.org) - *Principal*
- ★ Kris Kim (kris.kim@bvsd.org) - *Assistant Principal*
- ★ Amber Monroe (amber.monroe@bvsd.org) - *Math Teacher*
- ★ Sarah Stone (sarah.stone@bvsd.org) - *Math Teacher*
- ★ [BVSD Math Pathways Info](https://www.bvsd.org/math-pathways) (bvsd.org)

New Math Pathways Explained



I am completing the 4/5 Math course. What path can I take?

5TH GRADE

6TH GRADE

7TH GRADE

OPTION 1:

ADVANCED 1 (M30)

All 6th Grade Standards & half of 7th

ADVANCED 2 (M24)

Second half of 7th & All 8th Grade Standards

ALGEBRA 1 (M35)

*Updated Algebra materials will be adopted in '23-'24 and implemented '24-'25

OPTION 2:
OFF RAMP

ADVANCED 1 (M30)

All 6th Grade Standards & half of 7th

OFF RAMP

7TH MATH (M15)

7th Grade Standards

8TH MATH (M25)

8th Grade Standards

OPTION 3:
OFF RAMP

5TH GRADE STANDARDS & DIFFERENTIATION

OFF RAMP

OPPORTUNITIES TO ADVANCE IN MIDDLE SCHOOL

ADVANCED 1 IN 6TH GRADE
OR
ADVANCED 2 IN 7TH GRADE