

# Public Hearing: Improvement Required Campuses Turnaround Plans

---

Developing and Implementing Turnaround Plans

Leadership

June 2016



**Fort Worth**  
INDEPENDENT SCHOOL DISTRICT



# HB 1842

---

## Legislative Intent for Full Implementation Turnaround Plans by 2016-2017

TEC § 39.107



# TEC § 39.107

---

Campuses rated *IR 2, IR 3, IR 4* or above will:

- ✓ Be assigned a Campus Intervention Team (CIT)
  - Professional Service Provider (PSP)
  - DCSI Designee (Leadership Director)
- ✓ Create a Turnaround Plan
- ✓ Have Board of Trustees and Commissioner approve Turnaround Plans
- ✓ Submit progress reports to TEA



# TEC § 39.107 – Turnaround Campuses

---

## Elementary

A.M. Pate ES

Christene C. Moss ES

Harlean Beal ES

I.M. Terrell ES

Maude I. Logan ES

Maudrie M. Walton ES

John T. White ES

Sunrise-McMillan ES

## Secondary

O.D. Wyatt HS

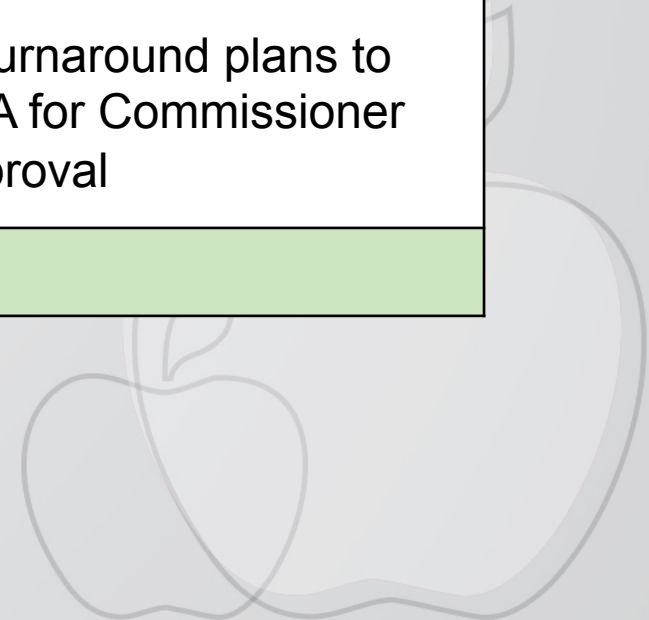
International Newcomer Academy (INA)

Forest Oak MS



# Campus Turnaround Plan Timeline

January	February	March
<p>22<sup>nd</sup> - Turnaround Plan template released</p> <p>25<sup>th</sup> - Webinar #1 (4-5)</p>	<p>11<sup>th</sup> - Required training at ESC 11 (9 am – 5 pm)</p> <p>22<sup>nd</sup> - Webinar #2 (3 pm – 4 pm)</p>	<p>28<sup>th</sup> - Webinar #3 (3 pm – 4 pm)</p>
April	May	June
<p>15<sup>th</sup> - Initial plans submitted to TEA for feedback</p> <p>22<sup>nd</sup> - Plans shared with District Board Members</p>	<p>16<sup>th</sup> - Plans posted on District website for public comments</p> <p>23<sup>rd</sup> - Final feedback on plans from TEA</p>	<p>14<sup>th</sup> - FWISD Board Approval</p> <p>17<sup>th</sup> - Turnaround plans to TEA for Commissioner approval</p>
<p><b>Feb 29<sup>th</sup> - April 11<sup>th</sup> - Campuses held community meetings for input</b></p>		



# TEC § 39.107 (b-6)

---

## **If a Turnaround Campus meets standard in August**

District Board of Trustees may:

- Continue implementation of the Turnaround Plan
- Modify the Turnaround Plan
- Discontinue implementation of the Turnaround Plan



# TEC § 39.107 (b-6)

---

## **If a Turnaround Campus does not meet standard**

The Commissioner has the option:

- Assign alternative leadership of the campus or
- Close the campus or
- Reorganize the governing structure





# HB 1842 Transition Chart

2015 – 2016 School Year	2016 – 2017 School Year	2017 – 2018 School Year	2018 – 2019 School Year	2019 – 2020 School Year
August 2015 Rating: <b>1<sup>st</sup> Year IR</b> <b>10 FWISD Campuses</b>	August 2016 Rating: <b>2<sup>nd</sup> Year IR</b> Develop TA Plan	August 2017 Rating: <b>3<sup>rd</sup> Year IR</b> Implement TA Plan	August 2018 Rating: <b>4<sup>th</sup> Year IR</b> Implement TA Plan	August 2019 Rating: <b>5<sup>th</sup> Year IR</b> Board of Managers or Closer Process
August 2015 Rating: <b>2<sup>nd</sup> Year IR</b> Develop TA Plan in Spring <b>5 FWISD Campuses</b>	August 2016 Rating: <b>3<sup>rd</sup> Year IR</b> Implement TA Plan	August 2017 Rating: <b>4<sup>th</sup> Year IR</b> Implement TA Plan	August 2018 Rating: <b>5<sup>th</sup> Year IR</b> Board of Managers or Closer Process	<b>OD Wyatt HS</b> <b>Forest Oak MS</b> <b>INA</b> <b>Harlean Beal ES</b> <b>IM Terrell ES</b>
August 2015 Rating: <b>3<sup>rd</sup> Year IR</b> Implement Reconstitution Plan Transition to TA Plan in Spring <b>4 FWISD Campuses</b>	August 2016 Rating: <b>4<sup>th</sup> Year IR</b> Implement TA Plan	August 2017 Rating: <b>5<sup>th</sup> Year IR</b> Implement TA Plan	August 2018 Rating: <b>6<sup>th</sup> Year IR</b> Board of Managers or Closer Process	<b>SS Dillow ES</b> <b>Christine C Moss ES</b> <b>Sunrise-McMillian ES</b> <b>John T White ES</b>
August 2015 Rating: <b>4<sup>th</sup>/5<sup>th</sup>/6<sup>th</sup> Year IR</b> Develop TA Plan in Spring <b>2 FWISD Campuses</b>	August 2016 Rating: <b>5<sup>th</sup>/6<sup>th</sup>/7<sup>th</sup> Year IR</b> Implement TA Plan	August 2017 Rating: <b>6<sup>th</sup>/7<sup>th</sup>/8<sup>th</sup> Year IR</b> Implement TA Plan	August 2018 Rating: <b>7<sup>th</sup>/8<sup>th</sup>/9<sup>th</sup> Year IR</b> Board of Managers or Closer Process	<b>AM Pate ES</b> <b>Maude I Logan ES</b>

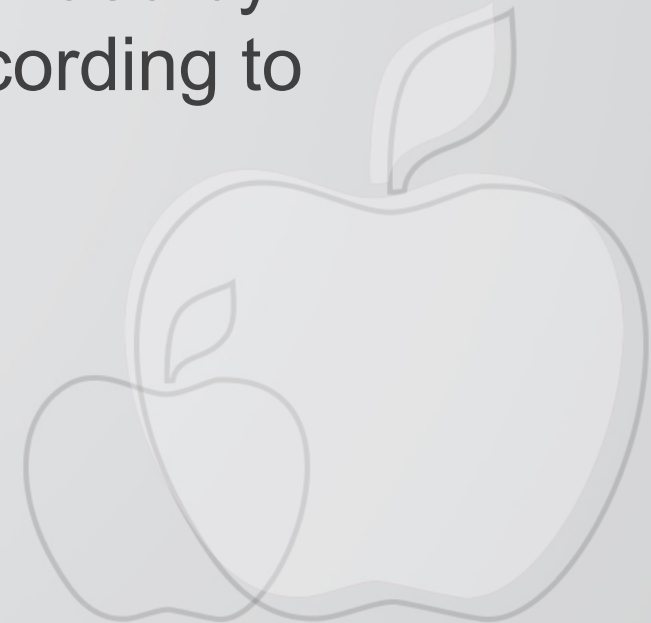




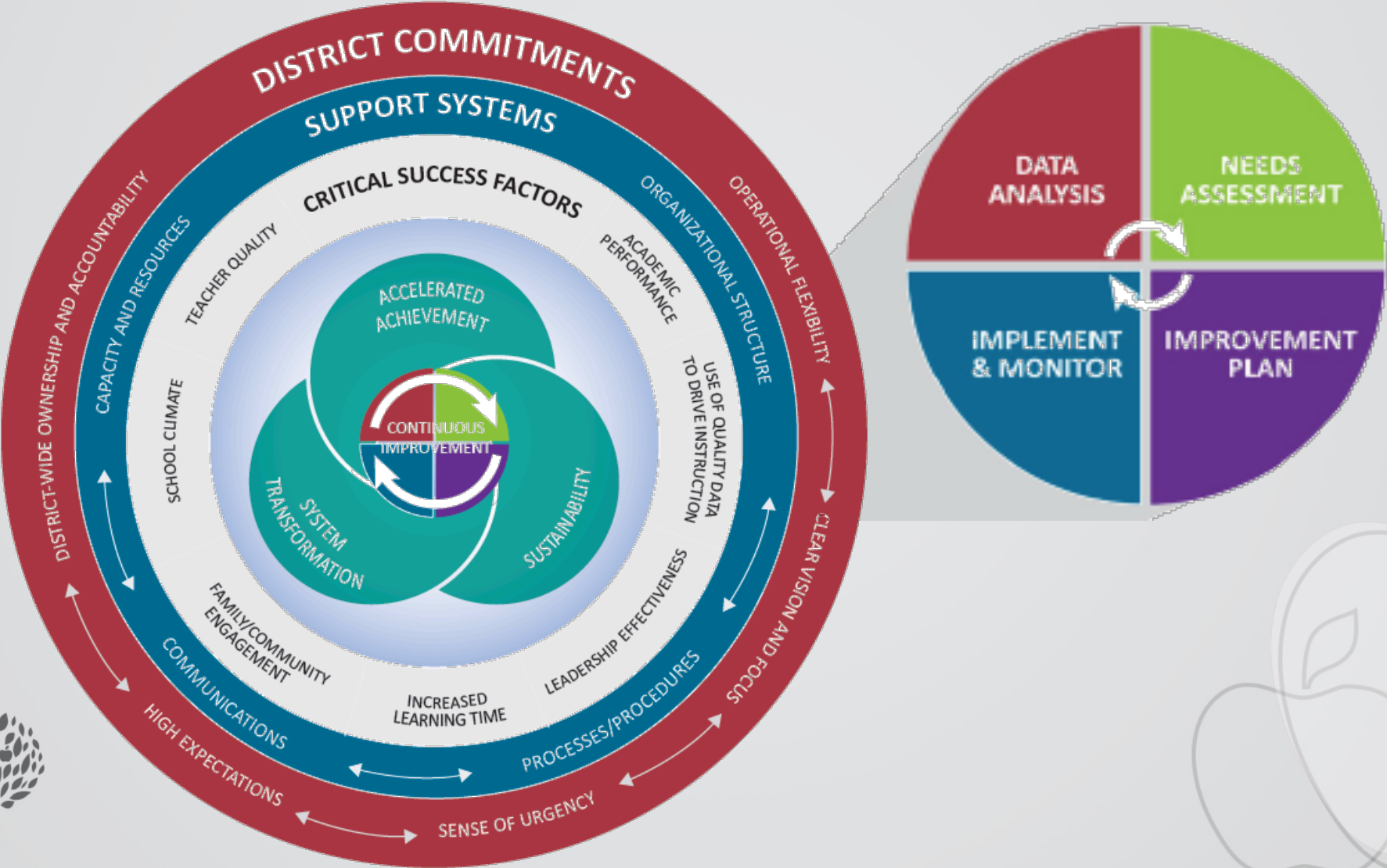
# District Turnaround Committee

---

- Review TAIS submissions from each campus and PSP input
- Provide ongoing professional learning support to teachers and administrators specific to data collection points
- Collaborate with the PSP, DCSI, and Principal on a monthly basis to ensure Focus & Alignment are being provided by Central Administration for continuous support according to the submitted Turnaround Plans



# Framework for Continuous Improvement



# HB1842

---

## Questions



Fort Worth  
INDEPENDENT SCHOOL DISTRICT

