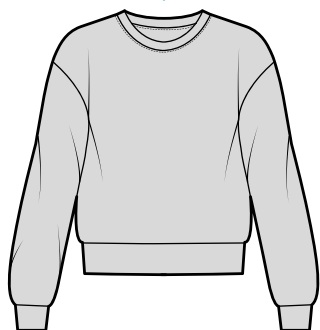


The Discovery School Clothing Style Guide

Uniforms encourage independence in dressing by allowing the child to mix and match items and know they are dressed appropriately. Wearing “school clothes” helps children be in a school mindset. They also aid focus in the classroom when children are less distracted by the clothing of others. It is our expectation that children’s uniforms are clean and look neat on a daily basis. In designing the item and color list, we attempted to make it easy and flexible for parents and comfortable for children. To ensure that students are appropriately dressed, The Discovery School has created the following guidelines for student dress. Logo items may be purchased through Lands’ End (preferred school #900064593). Bottoms or non-logoed items may be purchased from any store if they adhere to the dress code and school colors.

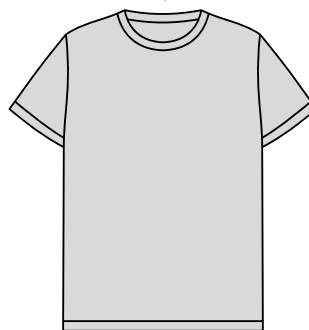
Sweatshirts, sweaters, and hoodies must be plain white, navy, or grey.
School logo is required.
Other logos are not allowed.



Polo colors include white, blue, maize, and heather gray.
Rapid dry polo colors include blue, soapstone and white.
School logo is required.



Tshirt colors include white and heather gray.
School logo is required.



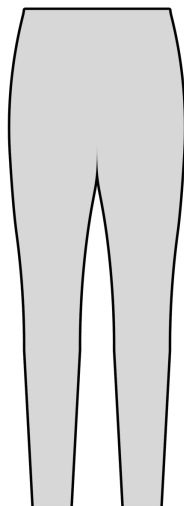
Shorts colors include navy, white, khaki, and grey. Shorts must be at least mid-thigh length.
Shorts worn under dresses/skirts can be any color as long as they are not visible when the child is standing.



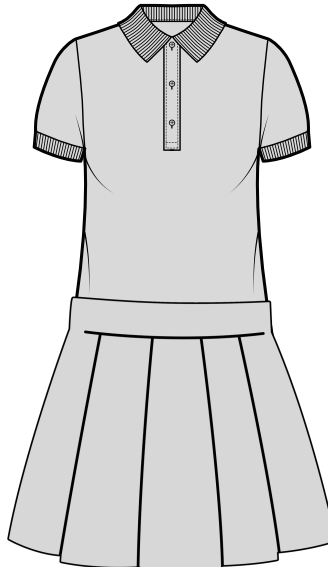
Pants colors include navy, white, khaki, and grey.
Sweatpants, joggers, yoga pants, gym shorts, and jeans are not permitted.



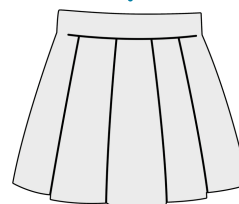
Leggings colors are navy, white, khaki, and grey. Students in 1st-8th grade may wear leggings or tights in instead of shorts when wearing dresses or skirts. Leggings or tights may not be worn as pants.



Several dress options are available on Land’s End.
Dresses must be at least mid-thigh length and have shorts worn underneath.



Skirts colors include navy, white, khaki, and grey.
Skirts must be at least mid-thigh length and have shorts worn underneath.

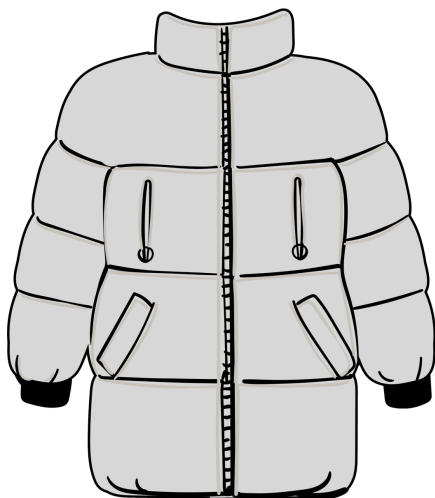


All shoes must be closed toe and cover the foot, with socks worn. Shoes should either tie or Velcro snugly. No flip-flops, thongs, jellies, or sandals



The Discovery School Clothing Style Guide

In cold weather, students may wear coats and jackets with no large logos, advertising, or denim. Options are available from the Lands End Store.



Hats, caps, hoods, sunglasses or outerwear may be worn outside only. These items are not allowed to be worn inside classrooms or buildings.



Socks are at the family's discretion as long as they do not distract the student or their peers from learning.



Hair ties, bows, and bands are at the family's discretion as long as they do not distract the student or their peers from learning.



SPIRIT DRESS

On Designated Spirit Days, students may wear a special Discovery shirt, Discovery athletic shirt, Mad Dash Shirts, and Discovery club shirt, with uniform bottoms.

FREE DRESS

On indicated Free Dress Days, usually the last Friday of each month, the children may wear clothes of their choice to school. Revealing clothing, pajamas, and lingerie are not acceptable. Yoga pants and leggings may be worn as long as they are paired with a top that provides adequate coverage.

Underwear must not be exposed. Tops and shirts must cover the entire shoulder and be modest, not revealing or distracting. Midriff or "cut-out" dresses and "cut-out" tops may not be worn. Extremely short skirts are not allowed.