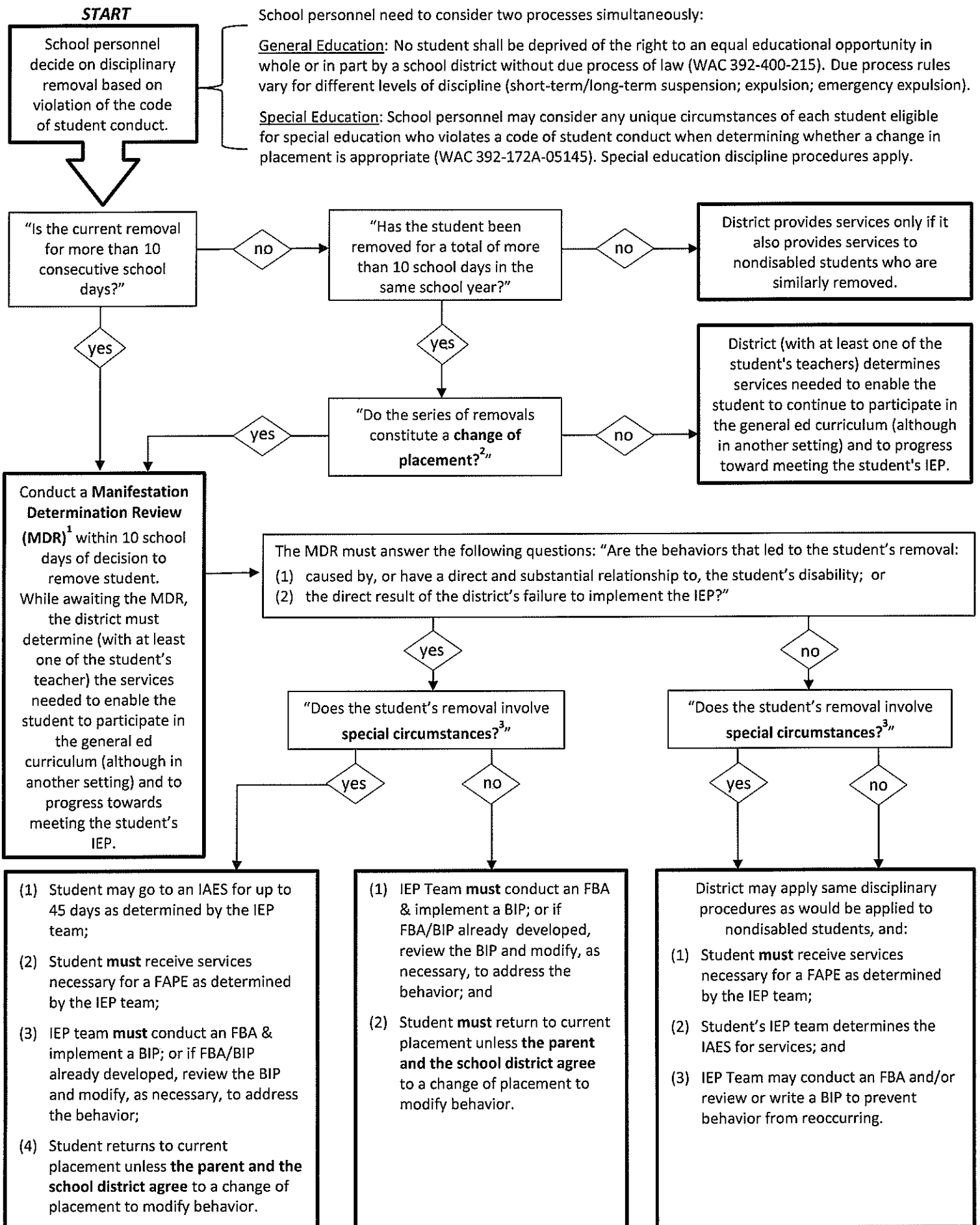


Overview of Discipline Procedures for Students Receiving Special Education Services*



¹Manifestation Determination Review (WAC 392-172A-05146): A meeting between the school district, the parent(s), and relevant members of the student's IEP team (as determined by the parent and the school district) to review all relevant information in the student's file, including the student's IEP, any teacher observations, and any relevant information provided by the parents to determine:

- (1) If the conduct in question was caused by, or had a direct and substantial relationship to, the student's disability; or
- (2) If the conduct in question was the direct result of the school district's failure to implement the IEP.

The conduct must be determined to be a manifestation of the student's disability if the school district, the parent(s), and relevant members of the student's IEP team determines that one of the two above conditions was met.

²Change of Placement (WAC 392-172A-05155): For disciplinary removals of a student eligible for special education, a change of placement occurs if:

- (1) The removal is for more than ten consecutive school days; or
- (2) The school district determines on a case-by-case basis that the student has been subjected to a series of removals that constitute a pattern because:
 - (a) the series of removals total more than ten school days in a school year;
 - (b) the student's behavior is substantially similar to the student's behavior in previous incidents that resulted in the series of removals; and
 - (c) there are additional factors such as the length of each removal, the total amount of time the student has been removed, and the proximity of the removals to one another.

³Special Circumstances (WAC 392-172A-05149): A school district may remove a student to an interim alternative educational setting (IAES) for not more than 45 school days regardless of whether the behavior is determined to be a manifestation of the student's disability, if the student:

- (1) Carries a weapon to or possesses a weapon at school, on school premises, or to or at a school function under the jurisdiction of a school district;
- (2) Knowingly possesses or uses illegal drugs, or sells or solicits the sale of a controlled substance, while at school, on school premises, or at a school function under the jurisdiction of a school district; or
- (3) Has inflicted serious bodily injury upon another person while at school, on school premises, or at a school function under the jurisdiction of a school district.

Weapon has the meaning given the term "dangerous weapon" under paragraph (2) of subsection (g) of Section 930 of Title 18, United States Code.

Controlled substance means a drug or other substance identified under Schedules I, II, III, IV, or V in Section 202(c) of the Controlled Substances Act (21 U.S.C. 812(c)); Illegal drug means a controlled substance; but does not include a controlled substance that is legally possessed or used under the supervision of a licensed health care professional or that is legally possessed or used under any other authority under that act or under any other provision of federal law.

Serious bodily injury has the meaning given the term "serious bodily injury" under paragraph (3) of subsection (h) of Section 1365 of Title 18, United States Code.

* Updated as of January 2018. This document should be used as guidance and is not intended as legal advice. Additional information can be obtained by reading OSPI bulletins and related publications; guidance from the U.S. Department of Education; chapter 392-172A WAC; Part 300 of the federal regulations; and the Individuals with Disabilities Education Act (IDEA).



