

November 30, 2022

Higley High School



Community Meeting #5

Community Meeting – Renovation Revisit



Phase 1 - Classroom Addition Images

Design



View Looking North



View Looking Northeast



View Looking Southeast



Phase 1 - Classroom Addition Images

Design



View Looking North From Cafeteria Outdoor Dining



Aerial View Looking Northwest



View looking South From Football Field



Phase 1 – Construction Update

Work in Progress



Masons laying 1st course of stem.



NE building corner step down footing and stem.



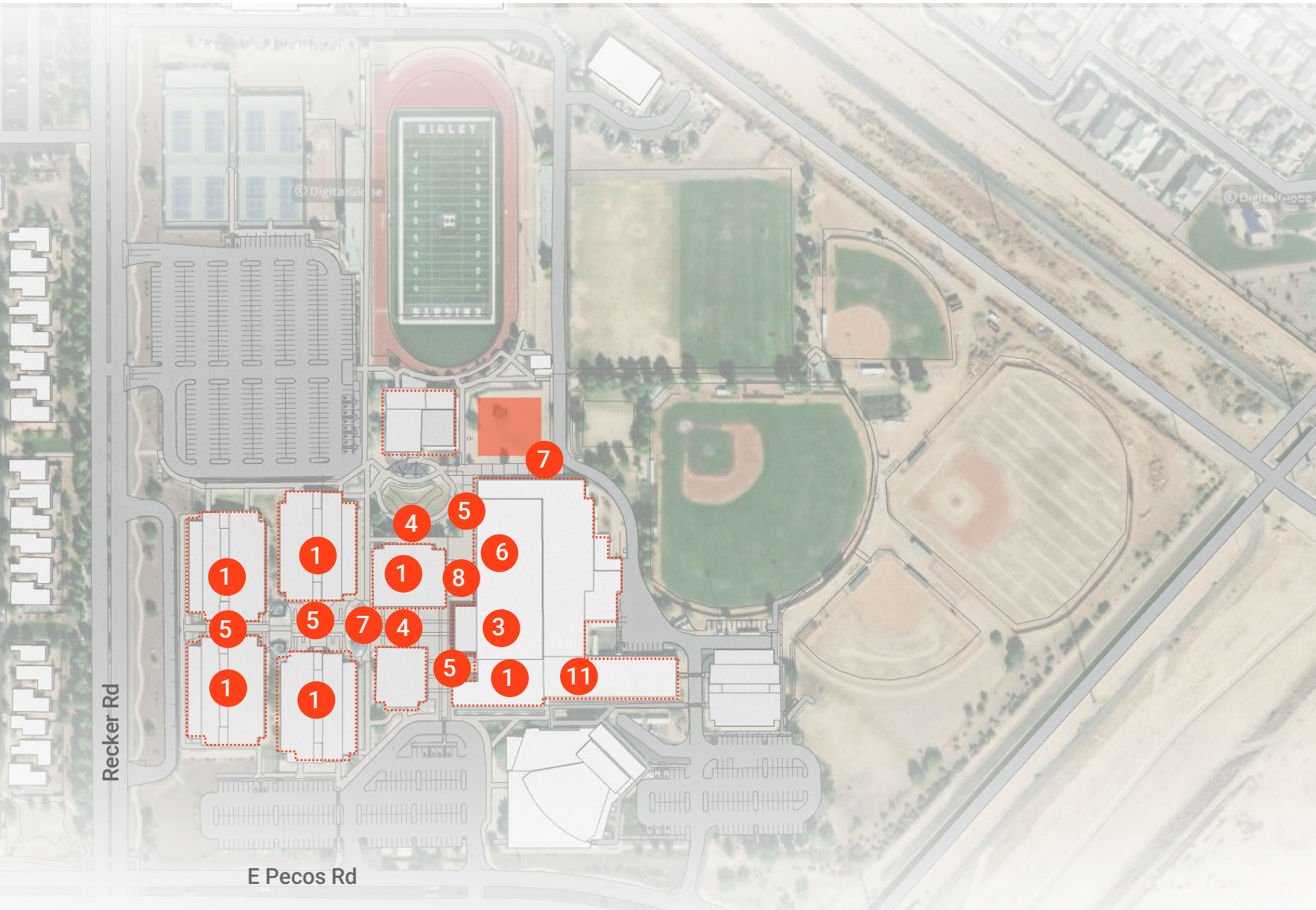
Pouring and checking footing heights.



Leveling footings.



Phase 2 Master Plan – *Postponed until additional funding is available



1. Restroom Refresh
2. Student Parking- Not Prioritized in March
3. Cafeteria Refresh
4. Additional Greenery on Campus and Courtyard
5. New Energized Vibrant Paint Scheme
6. Competition Gym Renovation
7. Campus Security and Lighting
8. New Gym Entry - Not Prioritized in March
9. Amphitheater Rethink
10. Curb Appeal - Not Prioritized in March
11. Fine Arts Renovation



Next Steps

Schedule

Higley High School

Next Steps:

***Postponed Master Plan until additional funding is available**

Design / Construction:

- Classroom Addition – Phase 1 Opens for Students: July 2023
- **Modified Phase II – Now follows Capital Decision Process**
- Price Modified Phase II Plan - December 2022
- Recommend Change Order/GMP#3 to Governing Board - Winter 2023



Capital Decision Process



Priority #1

Safety and Compliance: The district utilizes several resources to ensure all our facilities are compliant with local, state, and federal laws. Those include the risk retention Trust annual safety walks and American with disabilities compliance (ADA).



Priority #2

School Capacity Needs: The district utilizes internal school by school capacity reports as well as external resources such as demographic studies to plan and predict capacity needs.

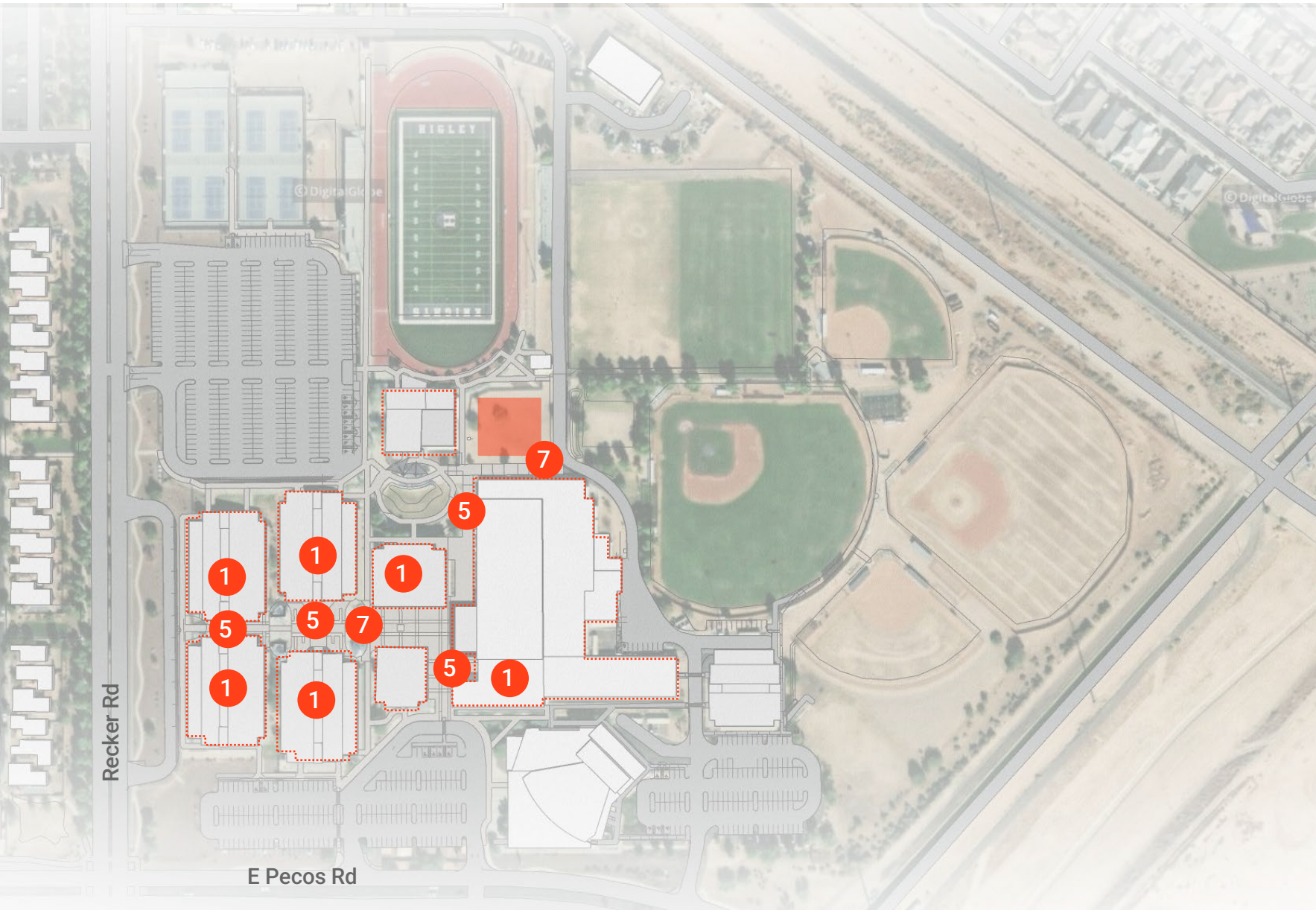


Priority #3

Long-term Capital Plan: The district annual reviews and updates the 5-year capital plan. The 5-year capital plan provides a replacement schedule for major maintenance items such as:

- Flooring
- Roofing
- HVAC
- Safety and Security

Modified Phase 2 - Campus Repairs



1. Restroom Refresh
2. Student Parking - Not Prioritized in March
3. Cafeteria Refresh
4. Additional Greenery on Campus and Courtyard
5. Exterior Weatherization and New Paint Scheme
6. Competition Gym Renovation
7. Campus Security and Lighting
8. New Gym Entry - Not Prioritized in March
9. Amphitheater Rethink
10. Curb Appeal - Not Prioritized in March
11. Fine Arts Renovation



Modified Phase 2 - Restroom Refresh

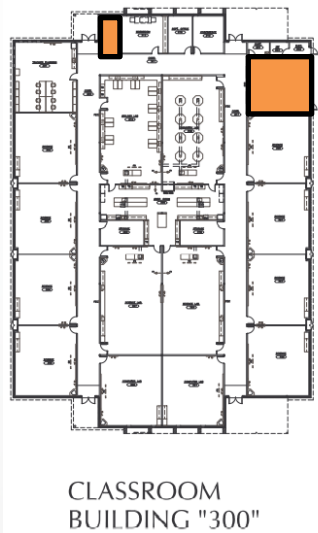
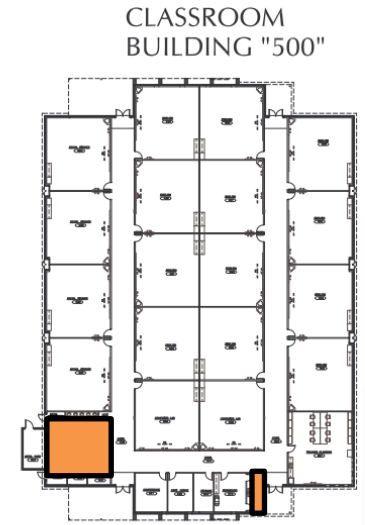
Ideas



Existing



Existing



Refresh – using colors from the new classroom building



Modified Phase 2 – Exterior Weatherization & New Paint Scheme

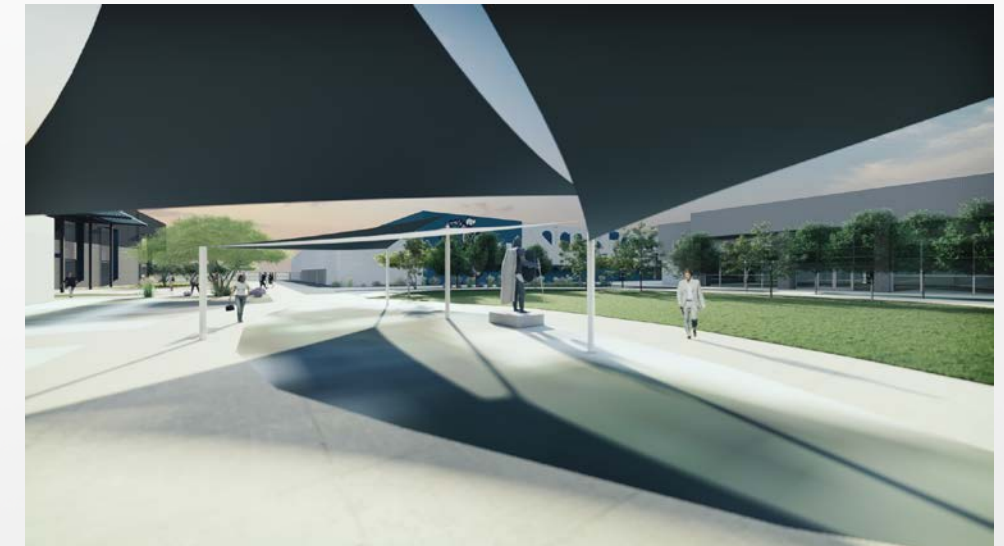
Ideas



Exterior Paint Refresh Idea



Exterior Paint Refresh Idea



Exterior Paint Refresh Idea



Modified Phase 2 - Campus Security and Lighting

Ideas



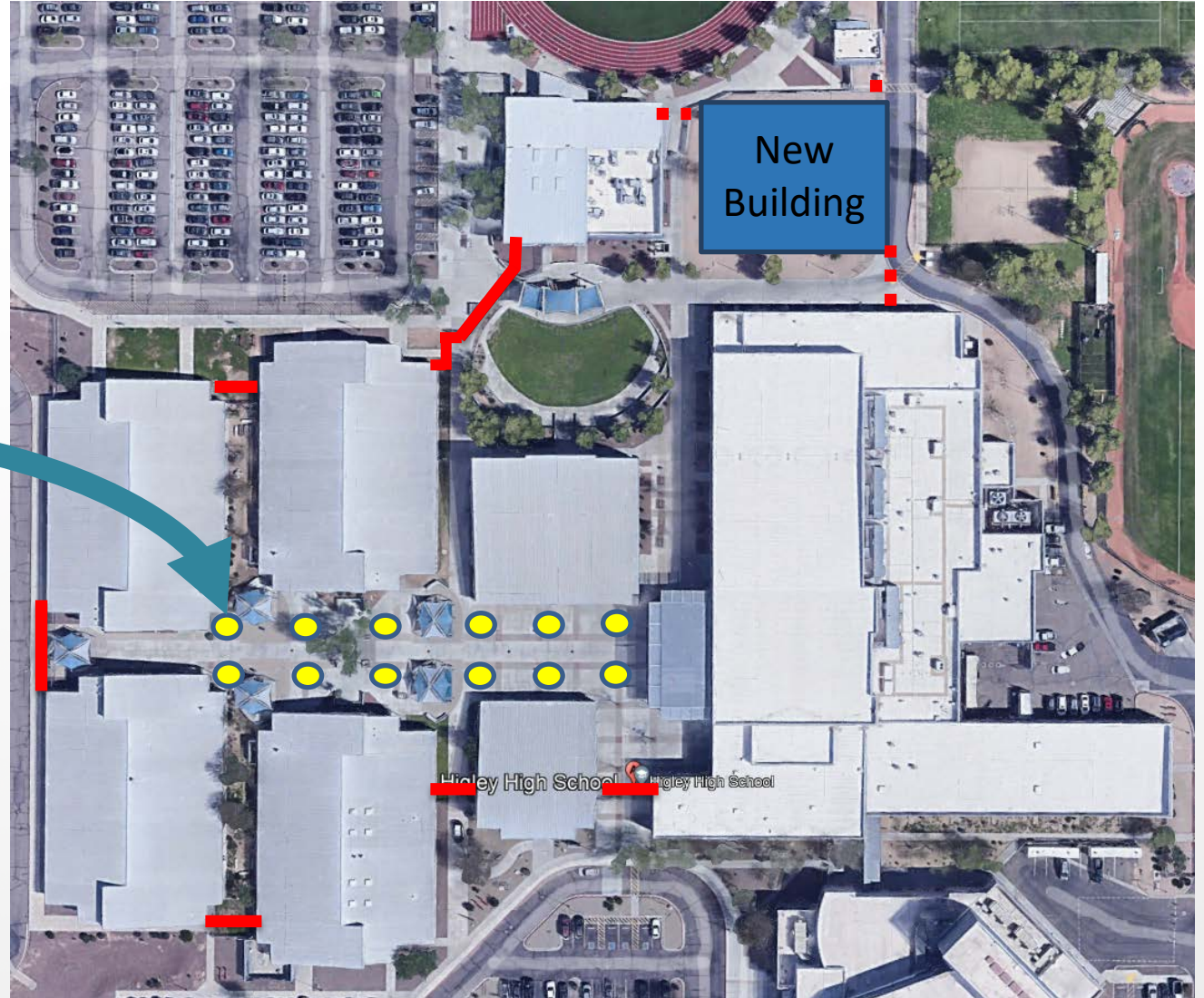
Existing Campus Afterhours



Proposed Courtyard Light Pole Fixtures



- Existing fencing
- Additional fencing
- Light fixtures



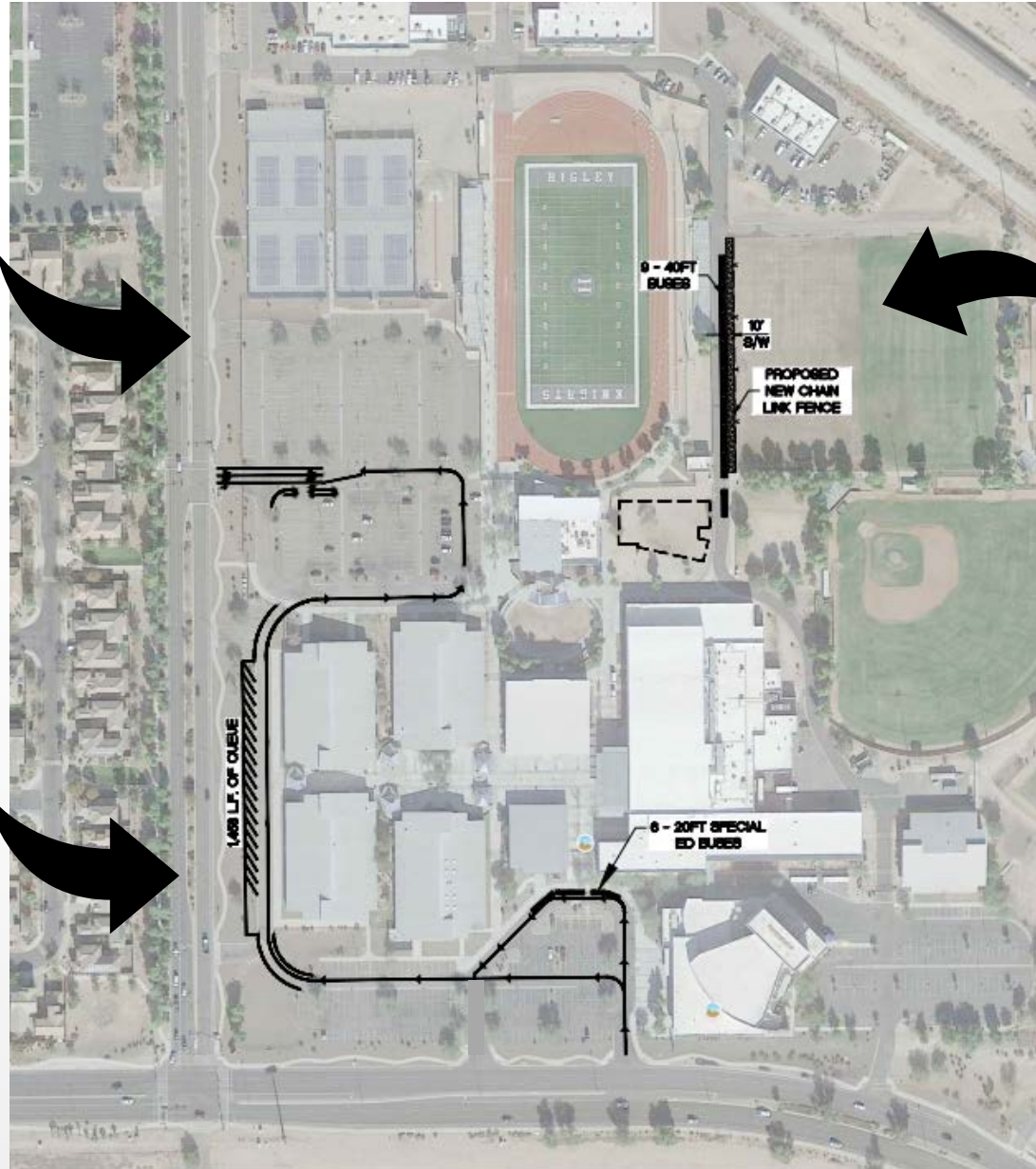
Phase 2 – Traffic Flow & Campus Security Updates

Ideas

Move Parking Lot fencing down to School/Building level



Increasing Parent Drop off queuing into current Bus Drop off and exit via Student Parking Lot



Moving Bus Drop to back of School



Modified Phase 2 – Recommendations

Pending Governing Board Approval

#	PHASE 2 PRIORITIES - CAMPUS REFRESH	BUDGETARY COST RANGES	
1	Restroom Refresh - demo, interior finishes, new plumbing/electrical fixtures; no major MEP, underground or RTUs	\$639,990	\$1,066,650
2	New Energized Paint Scheme - exterior paint refresh of campus, cmu and painted steel (no work to galvanized)	\$878,400	\$1,024,800
3	Campus Security and Lighting - added fence and gate, (10) new site lights and circuitry	\$183,000	\$219,600
4	Traffic Flow and Campus Security Updates	tbd	tbd
	estimated total	\$1,701,390	\$2,311,050
	*pricing is budgetary only and includes markups and soft costs		



THANK YOU!

