



Professional Dress Guidelines

Men

Acceptable

Suit



BUSINESS
professionals
OF AMERICA

Acceptable

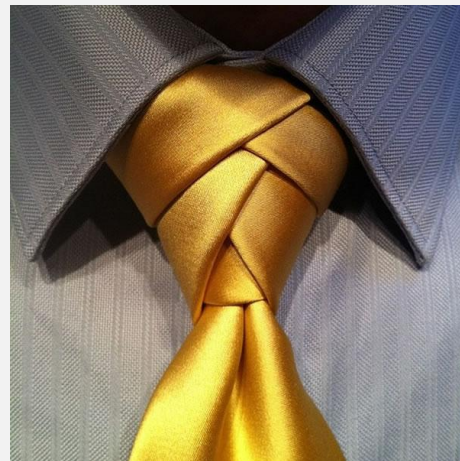
Slacks and Shirt



**Shirts must
be tucked in!**

Acceptable

Necktie



HOW TO

Tie a bow tie

IF YOU'RE IN A RUSH GO FOR PRE-TIED BUT WHEN IT'S A BIG EVENT YOU'RE DRESSING FOR ONLY THE REAL THING WILL DO. UNDO AT THE END OF THE NIGHT AND LET IT HANG FOR EXTRA RAT PACK-STYLE POINTS.



1 Do a knot as if you were going to tie your laces. But don't do the loops – instead fold back the bottom end and hold in place, ready to be fastened.



2 Bring the top end up and over the front of the 'bow' to better resemble the shape you're looking for.



3 Take that end under and up, poking it back through the knot giving the desired 'doubling-up' effect.



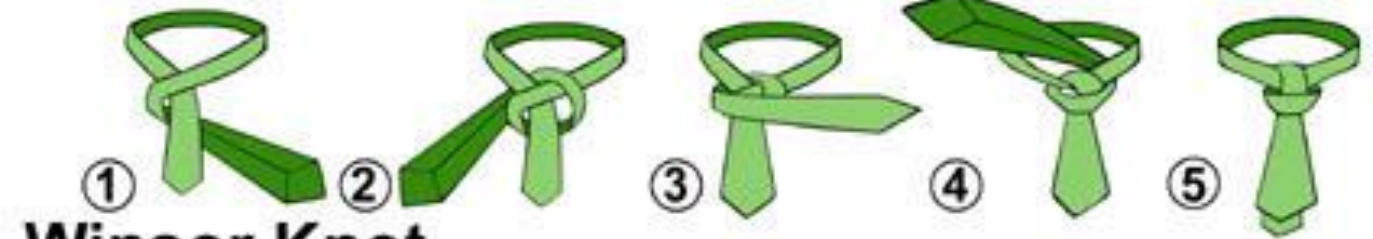
4 Pull snugly, but not tightly (you'll damage the tie) and plump and puff until the tie looks even symmetrical and neat. See, wasn't so hard now was it?

How to tie a tie

Four in Hand Knot



Half Winsor Knot



Winsor Knot



Double Knot



Acceptable

Shoes



Acceptable

Socks





A good rule of thumb
when it comes to socks
and shoes:

Nothing over-the-top,
keep it simple, neutral,
and matching.

Unacceptable

Attire

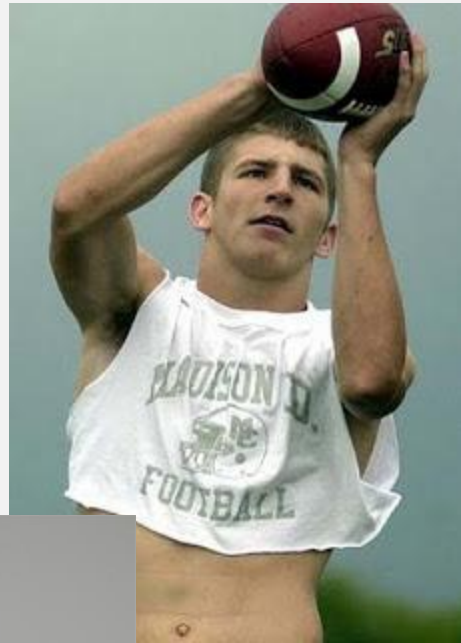


Unacceptable



Skin tight or revealing clothing will not be tolerated.

Unacceptable

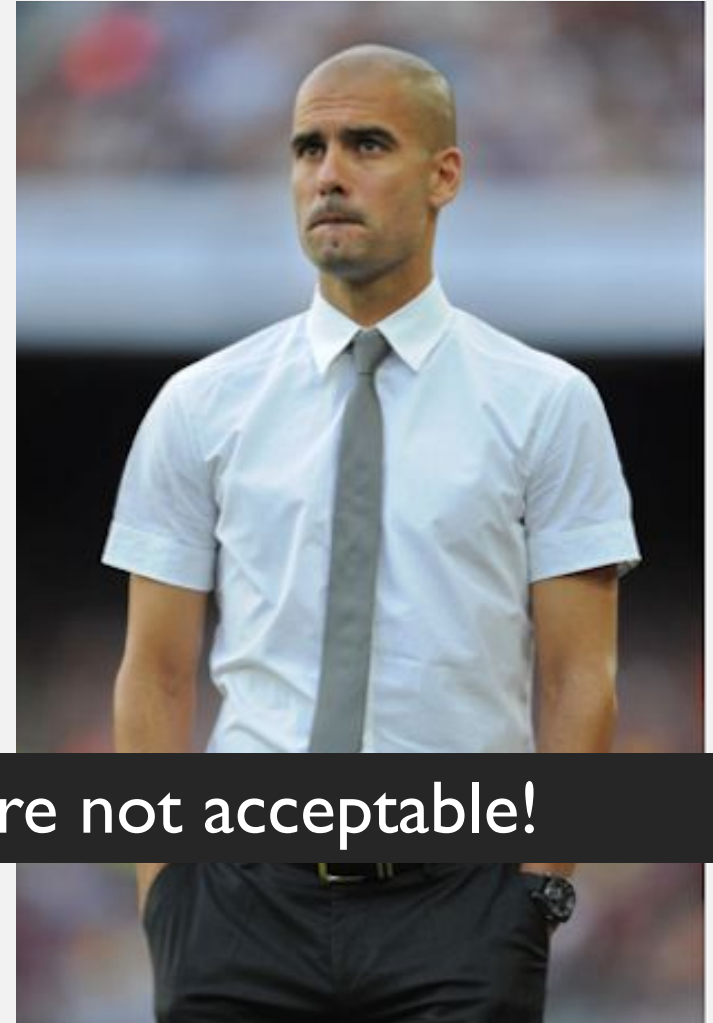


Athletic clothing is not allowed!



BUSINESS
professionals
OF AMERICA

Unacceptable



Short sleeve dress shirts are not acceptable!

Unacceptable



Clothing that is suggestive, obscene, or promotes illegal substances will not be tolerated.

Unacceptable



Sleeveless or see-through clothing is not allowed!

Unacceptable



Shirts with cut outs
will not be tolerated.





Unacceptable
Shoes:
Flip Flops
Open Toe
Open Heel
Boat Shoes
Canvas Shoes
Tennis Shoes
Casual Shoes
Studded Shoes
Bright Shoes

Unacceptable

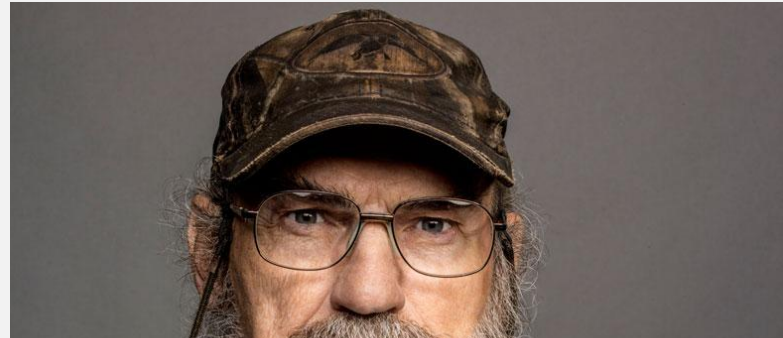


Neckwear must be fabric, tied correctly, and made for adults!



BUSINESS
professionals
OF AMERICA

Unacceptable



Facial hair must be trimmed and neat!



Unacceptable



Baggy pants are not allowed.
Pants must be worn at the waist.

**Wear a
belt!**

Unacceptable



Swimwear and sleepwear are not allowed.

Unacceptable



Denim is not allowed at competition, on stage, or at any official BPA event.



Everyone wants to
look stylish, but
sometimes looking
stylish is not the same
as looking **professional.**

Be

conservative

and use

discretion.