



Professional
Dress
Guidelines

Women

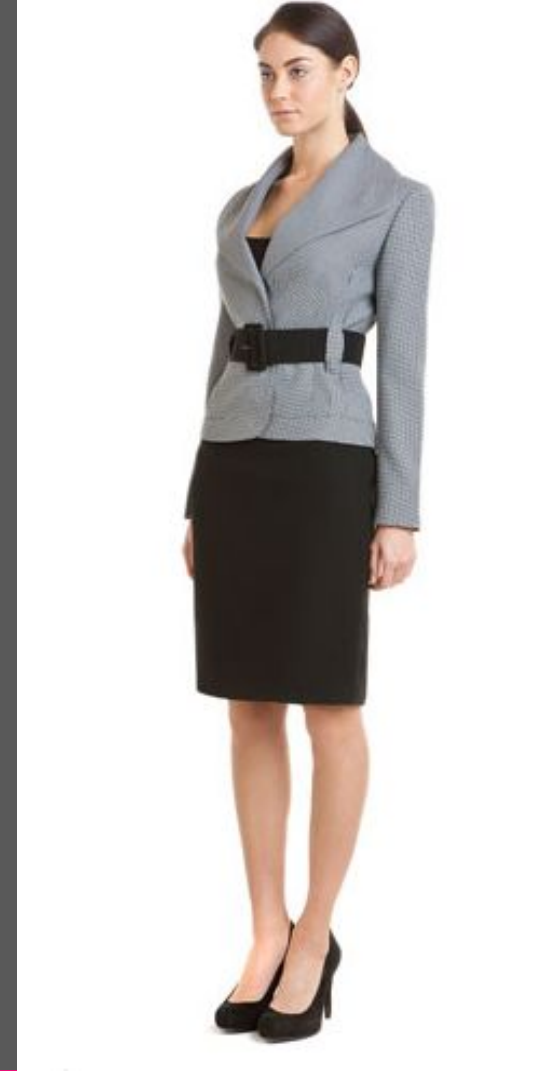
Acceptable

Pant Suit



Acceptable

Skirt Suit



Acceptable

Coordinated



**Skirts must be an
appropriate length:
No more than
2 inches above
the knee!**



**Square Post-It Notes
are 3 inches by 3
inches.**

**So it can't
be that short.**



Acceptable

Shoes



A good rule of thumb when it comes to shoes:

Nothing over-the-top, keep it simple, neutral, and classy.



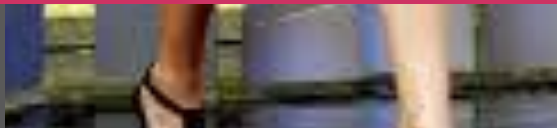
Unacceptable

Attire





Skin tight or revealing clothing will not be tolerated.



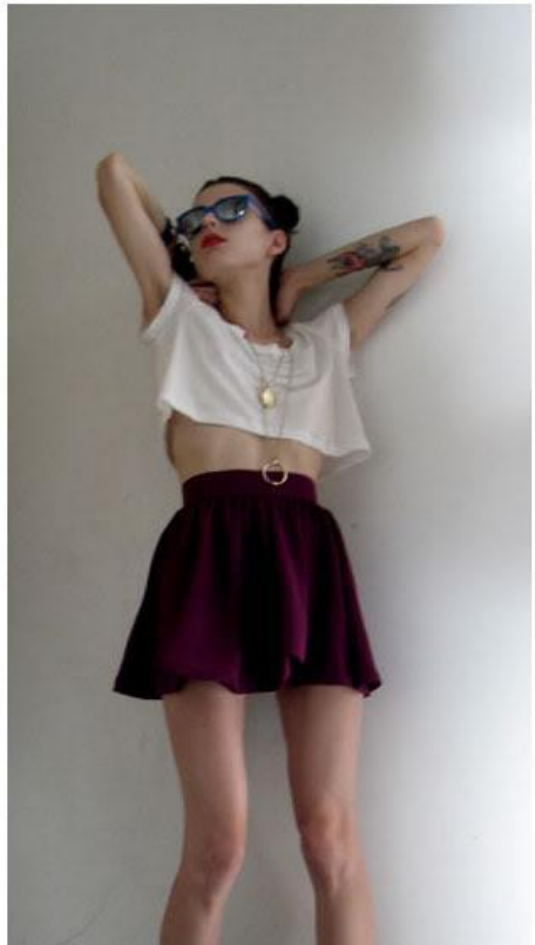
Unacceptable



Skirts and dresses cannot be more than
2 inches above the knee!



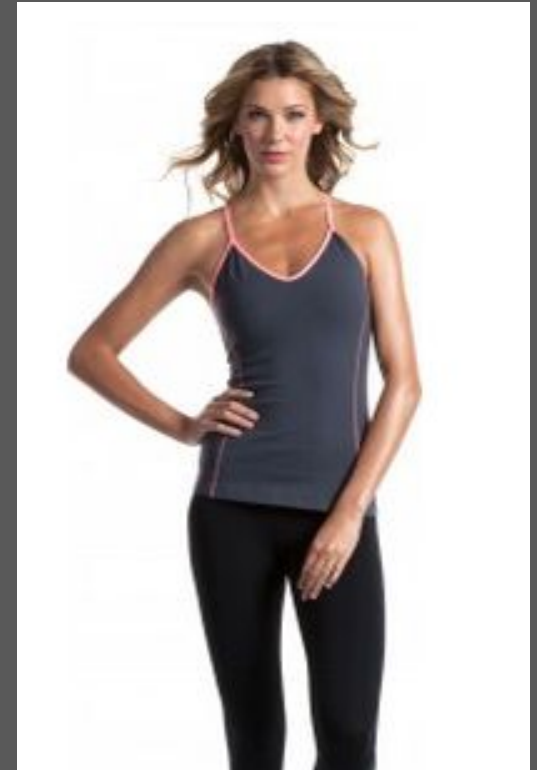
Unacceptable



Midriff clothing will not be tolerated!



Unacceptable



Athletic clothing is not allowed!



Unacceptable



Clothing that is suggestive, obscene, or promotes illegal substances will not be tolerated.

Unacceptable



Sleeveless or see-through clothing is not allowed!

Unacceptable





Strapless, low cut shirts, or shirts with cut outs
will not be tolerated.

Unacceptable



Unacceptable



Unacceptable Shoes:

Flip Flops

Open Toe

Open Heel

Boat Shoes

Canvas Shoes

Platform Heels

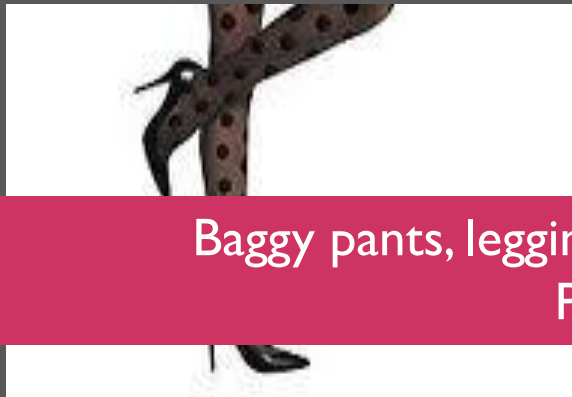
Tennis Shoes

Casual Shoes

Studded Shoes

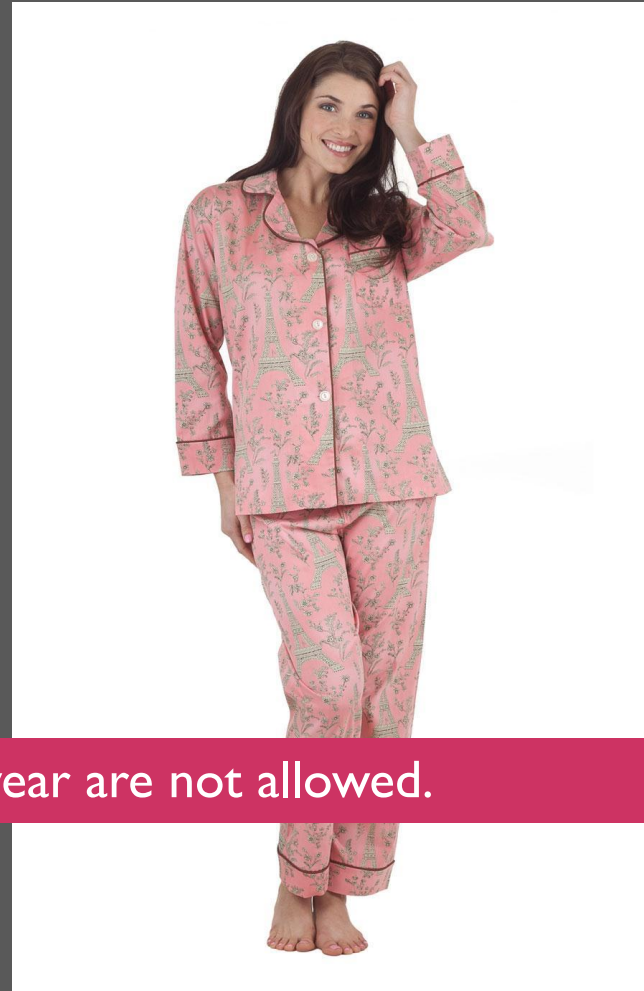
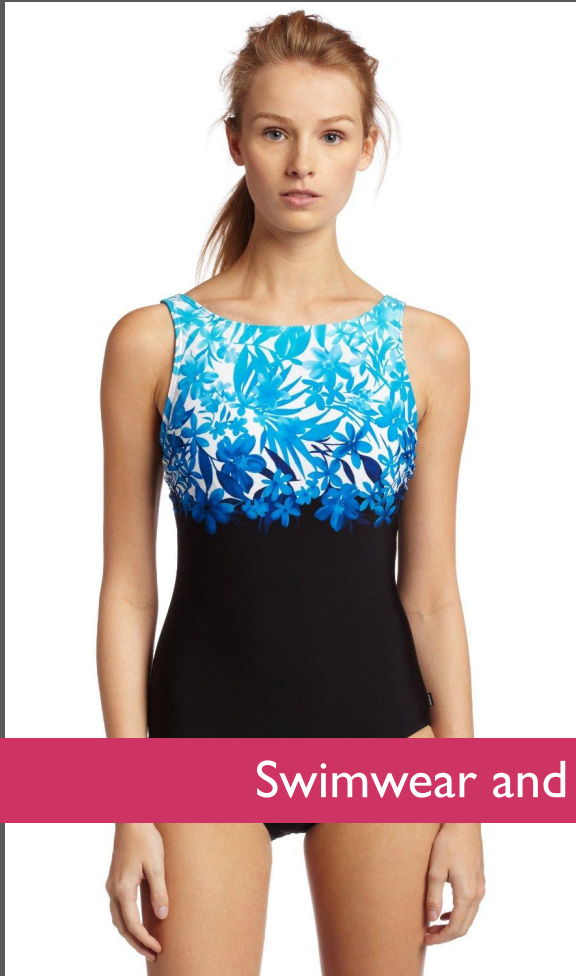
Slingbacks

Inappropriately High Boots



Baggy pants, leggings, patterned tights, and fishnet are not allowed.
Pants must be worn at the waist.

Unacceptable



Swimwear and sleepwear are not allowed.

Unacceptable



Denim is not allowed at competition, on stage, or at any official BPA event.

Unacceptable



Everyone wants to
look cute, but
sometimes looking
cute is not the same
as looking
professional.

Be

conservative

and use

discretion.