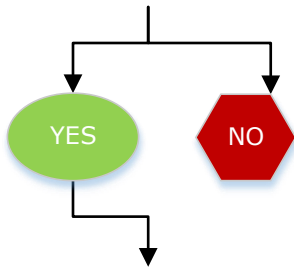


# Finding Your Bus Stop



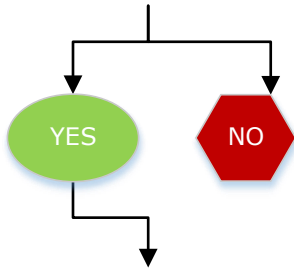
Is your requested stop within your school's boundary?



All students are welcome to ride the bus! Charter students ride on existing routes on a space-available basis. New bus stops will not be approved outside of a school's boundary. Parents are required to transport the student to school or to the closest established bus stop for the attended school.



Does your student reside at least 1.5 miles from his/her school?



MSBSD cannot add bus stops within 1.5 miles of the school. Your student is still welcome to use the nearest bus stop if it is closer than the school. There are many bus stops just outside of the "Walk Zone."

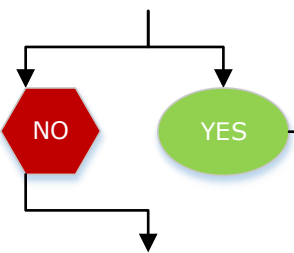


Please contact the Pupil Transportation Department for information regarding the nearest route and existing bus stop. If you are eligible to request a new stop, please see the bus stop request criteria (below) for equitable pupil transportation.

## Bus Stop Criteria



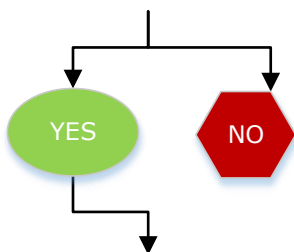
Is the requested stop 800 feet or less from an existing bus stop?



A safety review of the requested and existing stop will be conducted. Bus stops within neighborhoods are placed at safe, centrally located intersections for all to use within the neighborhood. Most bus stops are required to be at least 800 feet apart.



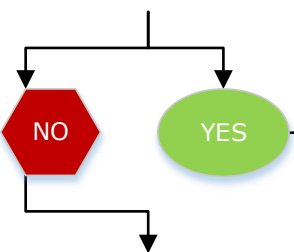
Does the bus have enough time to make the new stop?



MSBSD's buses are scheduled on a tiered system – the same bus is used for Elementary, Middle, and High school routes. There may not be enough time on a route to add a new stop and still make it to school on time. MSBSD does not usually add stops within 800 feet of existing stops.



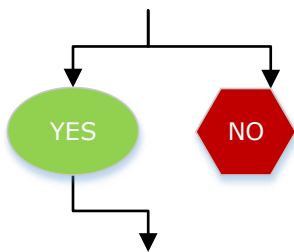
Does the bus add duplicate mileage to the route?



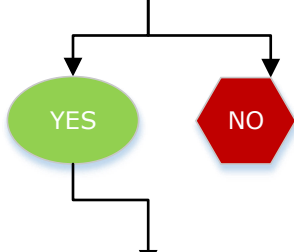
Duplicate mileage means the bus must cover the same stretch of road twice. Does the new stop requiring duplicate mileage:  
A. Provide service for 15+ students within a mile of the main route OR  
B. Provide service for 3+ students over a mile from the main route and average 1 student per mile?



Is this road maintained by the Borough, State of Alaska, or a Municipality?



Is there adequate space for a bus to turn around safely?



All bus stops require adequate space for buses to turn around in case of emergency.



**Bus stop request approved!**