



WHITESBORO CENTRAL SCHOOL DISTRICT

PUBLIC INFORMATION GUIDE

INSPIRE • CULTIVATE • EMPOWER





OUR MISSION

TO INSPIRE, CULTIVATE, AND EMPOWER ALL LEARNERS TO MAXIMIZE THEIR POTENTIAL.





OUR VISION

TOGETHER WITH OUR COMMUNITY, THE WHITESBORO CENTRAL SCHOOL DISTRICT PROVIDES A DYNAMIC, COMPREHENSIVE PROGRAM COMMITTED TO RELEVANT, ENGAGING, INDIVIDUALIZED EXPERIENCES, WHILE FOSTERING A CULTURE OF PERSONAL AND PROFESSIONAL GROWTH IN A SAFE, DIVERSE, POSITIVE LEARNING ENVIRONMENT.



TABLE OF CONTENTS

- 6 DEMOGRAPHICS
- 8 HIGHLIGHTS
- 10 CAPITAL IMPROVEMENTS
- 11 STEM PROGRAMS
- 12 PUBLIC RELATIONS
- 13 PARENT-TEACHER ORGANIZATIONS
- 14 WHITESBORO HIGH SCHOOL
- 16 WHITESBORO MIDDLE SCHOOL CAMPUS
- 18 DEERFIELD ELEMENTARY SCHOOL
- 20 HART'S HILL ELEMENTARY SCHOOL
- 22 MARCY ELEMENTARY SCHOOL
- 24 WESTMORELAND ROAD ELEMENTARY SCHOOL
- 26 GUIDANCE AND PUPIL PERSONNEL SERVICES
- 28 SPECIAL PROGRAMS AND SERVICES
- 30 INFORMATION/INSTRUCTIONAL TECHNOLOGY
- 32 MUSIC/ART
- 34 ATHLETICS
- 38 WHITESBORO ALUMNI ASSOCIATION



WELCOME TO THE

WHITESBORO

CENTRAL SCHOOL DISTRICT

INSPIRE • CULTIVATE • EMPOWER

This guide has been developed to help our current and potential residents get an up-close and personal look at the Whitesboro Central School District. Please review the enclosed information to learn more about our schools, programs, facilities and unwavering commitment to the students and community of Whitesboro and beyond.

We believe that the Whitesboro Central School District provides our students with an array of opportunities, ensuring that they will be college, career and life ready upon graduation. This guide showcases the district and those opportunities.

Thank you for your interest in our school community.

WHITESBORO CENTRAL SCHOOL DISTRICT BOARD OF EDUCATION



DEMOGRAPHICS

The Whitesboro Central School District is the third largest school district in Oneida County, serving approximately 3,200 students and encompassing all of, or parts of, the towns of Whitesboro, Marcy, Deerfield, Schuyler and Trenton.

Located in the heart of Oneida County in Central New York, the Whitesboro Central School District includes seven school buildings and is located between the cities of Utica and Rome.

Its central location and close proximity to the New York State Thruway allows for easy access to other areas of the state.

The Adirondacks are just a short twenty-minute drive to the north, while the Catskills lie to the south. The Capital Region is only 100 miles to the east, while the cities of Syracuse, Rochester and Buffalo are to the west. New York City is just four hours away when traveling on the Thruway.

Though large in size and area compared to many of the other school districts in the area, the Whitesboro Central School District is a suburban school district made up of several small, close-knit communities. Individualized instruction is still a high priority, and is accomplished by maintaining developmentally appropriate class sizes.



Erie Canal
Marcy



Former Town Hall
Whitesboro



WESTMORELAND ROAD
ELEMENTARY
393 (13%)

HART'S HILL
ELEMENTARY
354 (11%)

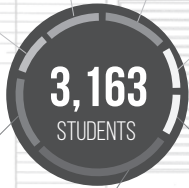
PARKWAY
252 (8%)

DEERFIELD
ELEMENTARY
336 (11%)

MIDDLE SCHOOL
515 (16%)

MARCY
ELEMENTARY
325 (10%)

HIGH SCHOOL
988 (31%)



SCHOOL-RELATED
241 (44%)

INSTRUCTIONAL
309 (56%)



MODIFIED TEAMS
18

JUNIOR
VARSITY TEAMS
14



VARSAITY TEAMS
26

ORIGINAL

ELEVATION
1/8 IN = 1'-0"

IN CORNICE
SCALE 3/16 IN = 1'-0"

CHORUSES
8



BANDS
13

ORCHESTRAS
11



*Data accurate as of 10/1/2019




Firefighters Memorial
Whitesboro



Dunham Public Library
Whitesboro

ELEVATION of END BAY


HIGHLIGHTS



**DEVELOPMENTALLY
APPROPRIATE CLASS SIZES
ALLOW FOR INDIVIDUALIZED
INSTRUCTIONAL APPROACHES**

**WORLD LANGUAGES
ARE OFFERED
IN GRADES 7-12**

**STATE-OF-THE-ART
TECHNOLOGY AVAILABLE TO
SUPPORT INSTRUCTION BOTH IN
AND OUTSIDE OF THE
CLASSROOM**



**PSYCHOLOGICAL,
COUNSELING, SPEECH,
AND OTHER RELATED
SERVICES ARE
PROVIDED AS NEEDED**

**ART, MUSIC, AND
PHYSICAL EDUCATION
ARE INTEGRAL PARTS OF
THE K-12 EDUCATIONAL
PROGRAM**

**QUALITY PROGRAMS
ARE OFFERED FOR
GIFTED AND TALENTED
STUDENTS AND
STUDENTS WITH
SPECIAL NEEDS**

**DISTRICT SUPPORTS AND FUNDS A
PROFESSIONAL DEVELOPMENT PLAN
FOCUSED ON RESEARCH-BASED
PRACTICES**



CAPITAL IMPROVEMENTS

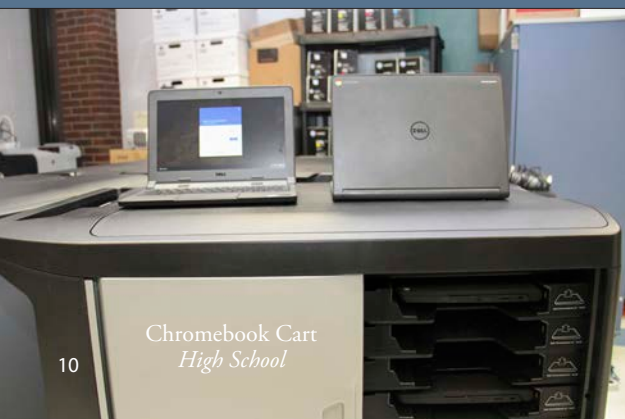
The Whitesboro Central School District Board of Education and administration continuously work to ensure that the District's learning buildings and facilities are up-to-date, safe, clean and conducive to learning. In May 2019, District voters approved a proposition for a 2020 Capital Project.


The scope of the project is District-wide, and will address items such as:

- Health and safety/security enhancements, such as cameras, doors and building access control measures, emergency notification system
- Roofing
- Electrical, mechanical and plumbing upgrades
- Middle School auditorium renovations
- Building structural needs
- Public address and clock systems
- Gymnasium partitions
- Asbestos abatement
- Window replacement
- Accessibility for those with special needs
- Paving
- Instructional Technology infrastructure

For more specific and up-to-date information regarding ongoing improvements in our District, visit www.wboro.org/capitalproject.

PREVIOUS CAPITAL IMPROVEMENTS





STEM PROGRAMS

YOUTH SCIENCE AND TECHNOLOGY ACADEMY

For two weeks during the summer, students in grades six, seven and eight have the opportunity to learn more about the STEM fields (science, technology, engineering and math) during the Youth Science and Technology Academy, held at Whitesboro Middle School as a joint venture with Mohawk Valley Community College (MVCC).

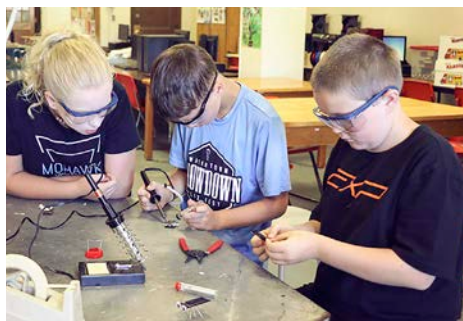
The camp is split into two sessions, Science and Technology Academy 101 and 102, where students who participate in the first week of the summer camp, are able to go on to the second session. Some of the topics that are covered in the camp include electronics, nanotechnology, solar cars, drones, solar ovens, and more. At the end of each week, students are taken on trips to places like MVCC's labs, and Danfoss on SUNY Polytechnic Institute's campus.

The Youth Science and Technology Academy is held during the summer at the end of July and the beginning of August.

INTRODUCTION TO NANOTECHNOLOGY

In an attempt to raise awareness, prepare and excite students for potential jobs in their own backyard, Whitesboro High School offers a course called "Introduction to Nanotechnology."

This one-of-a-kind science course, which is completely lab-based and hands-on, is designed to introduce students to the emerging field of nanotechnology and its implications for society. At the conclusion of the course, students have a better understanding of the relevance of nanotechnology as it relates to chemical and physical systems, electrical and magnetic nanostructures and nanoapplications with light and material nanofabrication.



Enrolled students must have taken biology and chemistry, as well as a third year of math, to qualify for the elective.



PUBLIC RELATIONS

WEBSITE

The Whitesboro Central School District can be found online at www.wboro.org.

The website has been updated to become more visually appealing and user-friendly. Additionally, the website is responsive, meaning it fits a wide range of devices, from your desktop to your mobile phone, for easy reading and optimal viewing.

As always, you can visit www.wboro.org for:

- District News
- District Calendar of Events
- Announcements
- Emergency Notifications
- Photos
- Department Information
- Athletics

MOBILE APP

Stay in touch with Whitesboro Central Schools by downloading our mobile app, which lets you check out the latest District and school news, keep up with our calendar of events, and more. Download the app on your mobile device and

select “yes” to receive push notifications with the latest news and updates from the District.

The Whitesboro CSD app can be found in Apple’s App Store and the Google Play Store.

NEWSLETTER

The Whitesboro Central School District publishes and distributes four newsletters to District residents annually, typically during the months of:

- February
- May (Budget Newsletter)
- August (Back-to-School Newsletter)
- November

BOARD OF EDUCATION

The Whitesboro Central School District Board of Education typically meets at 7:00 p.m. on the first Tuesday of each month during the school year. Meetings are held at the Administration Building at 65 Oriskany Blvd. in Whitesboro, or at one of the school buildings in the District. Please refer to www.wboro.org for updated information regarding the Board of Education meeting schedule.



PARENT-TEACHER ORGANIZATIONS

Parent-teacher organizations/associations create a link between our schools, teachers and parents.

The volunteer groups serve as a forum for discussion and are an excellent way for parents and teachers to work together to ensure the best possible educational opportunities for our children.

The groups play an active role in the school community and support the school program through fundraising, hosting school events, and purchasing educational items for the classroom. The combined efforts of parents at home and teachers at school, help us provide a unified, consistent and intelligent approach to help our children grow into well-rounded adults.

If you are a parent or guardian and your child or children attend the Whitesboro Central School District and you are interested in joining your school's parent teacher organization, contact the appropriate school using the information below.

HIGH SCHOOL: 315.266.3210

MIDDLE SCHOOL CAMPUS: 315.266.3110

DEERFIELD ELEMENTARY SCHOOL: 315.266.3410

HART'S HILL ELEMENTARY SCHOOL: 315.266.3430

MARCY ELEMENTARY SCHOOL: 315.266.3420

WESTMORELAND ROAD ELEMENTARY SCHOOL: 315.266.3440



HIGH SCHOOL

CONTACT INFORMATION

6000 Route 291
Marcy, NY 13403

MAIN OFFICE/PRINCIPAL: **315.266.3210**
GUIDANCE AND PUPIL PERSONNEL SERVICES: **315.266.3240**
NURSE'S OFFICE: **315.266.3414**
ATTENDANCE OFFICE: **315.266.3233**

988

Approximate number of students

**Data accurate as of 10/1/2019.*

RECOGNITION SCHOOL

Whitesboro High School has been identified by the New York State Education Department as a Recognition School. The school is recognized for high academic achievement, high student growth and graduation rate, which also exceeds state measures in English and math, absenteeism, college, career and civic readiness.

SYRACUSE UNIVERSITY PROJECT ADVANCE (SUPA)

Whitesboro High School offers "An Introduction to the Analysis of Public Policy" and "Economic Ideas and Issues." The courses are administered through Syracuse University and are for seniors with a minimum of an 85 average. By completing each course, a student earns ½ high school credit and three college credits transferrable to most colleges.

SCHOOL OF EXCELLENCE

Whitesboro High School has been identified by New York State Public High School Athletic Association for having 22 varsity teams (more than 75% of our teams) attain Scholar Athlete Team status with team averages exceeding 90 percent.

SCANNING ELECTRON MICROSCOPE

Whitesboro is one of only four school districts in the entire country to have its own scanning electron microscope for students to use. The powerful microscope, which is located in the science wing of the high school, is a type of electron microscope that produces images of a sample by scanning it with a focused beam of electrons. Samples can be magnified up to 20,000 times or reduced to 300 nanometers.

CURRICULUM HIGHLIGHTS

AP COURSES OFFERED:

Art, Biology; Calculus; Chemistry; Computer Science; English Literature and Composition; Environmental Science; Human Geography; Psychology; Statistics; U.S. History; World History

DUAL CREDIT COURSES OFFERED THROUGH MVCC:

Computer Aided Design (CAD); English 101, 102; Financial Accounting; French/Spanish 191,192, 201, 202; Math 110 and 115; Music Appreciation; Political Science 101; Sociology

DUAL CREDIT COURSES OFFERED THROUGH TOMPKINS COUNTY COMMUNITY COLLEGE:

Biology 104, 105; Chemistry 107, 108; Environmental Science 107, 108

HONORS CLASSES OFFERED:

Earth Science; English 9, 10, 11; Social Studies 9

SAT PREP CLASS OFFERED

PROJECT LEAD THE WAY (PLTW)

- PLTW is a nationally recognized pre-engineering program. Students can earn college credit from Rochester Institute of Technology (RIT).

MVCC BRIDGE PROGRAM/COLLEGE CONNECTIONS

- College Connections is a scholarship program for qualified high school juniors and seniors. Students may take approved courses on a part-time basis at Mohawk Valley Community College's Utica or Rome campus.

REGIONAL PROGRAM FOR EXCELLENCE (RPE)

- RPE is an internship-based program offered through the Oneida-Herkimer-Madison BOCES to give high school seniors the opportunity to explore diverse careers in real workplace settings.

For more specific and up-to-date information on the courses, programs, clubs and organizations mentioned, visit www.wboro.org/highschool.

24 CLUBS/ORGANIZATIONS

Art Club
Building Bridges
Chamber Orchestra
Chamber Singers
Environmental Action Club
Future Firefighter Club
Gay/Straight Alliance
Girls' Athletic Association
International Club
Jazz Ensemble
Literary Club
Mathletics
Model United Nations
National Honor Society
Political Discussion Club
Red Cross Club
Renaissance
Students Against
Destructive Decisions
School Newspaper –
Smoke Signal
Ski Club
Student Council
Technology Club
Varsity Club
Yearbook Club



MIDDLE SCHOOL CAMPUS

PARKWAY (6TH GRADE)

Parkway is home to all of the District's sixth grade students. It serves as a transitional school, introducing students to the middle school climate.

MIDDLE SCHOOL (7TH & 8TH GRADE)

The Middle School is home to the District's seventh and eighth grade students. It prepares students for the next step in their education, and eventual move to the high school.

CONTACT INFORMATION

75 Oriskany Boulevard, Whitesboro, NY 13492

MIDDLE SCHOOL

MAIN OFFICE/PRINCIPAL: 315.266.3110

ASSISTANT PRINCIPAL: 315.266.3110

GUIDANCE AND PUPIL PERSONNEL SERVICES: 315.266.3112

NURSE'S OFFICE: 315.266.3114

PARKWAY

MAIN OFFICE/ASSISTANT PRINCIPAL: 315.266.3176

GUIDANCE AND PUPIL PERSONNEL SERVICES: 315.266.3176

NURSE'S OFFICE: 315.266.3164

515

*Approximate number
of 7th/8th grade students*

252

*Approximate number
of 6th grade students*

**Data accurate as of 10/1/2019.*



The Middle School Campus consists of two buildings, but lives by the following motto: “One Campus, One Team.”

CURRICULUM HIGHLIGHTS

Notable Courses:

- Accelerated math and science classes
- Accelerated world language classes including American Sign Language (ASL) and Mandarin Chinese

18 CLUBS/ORGANIZATIONS

Art Club

Book Club

Chess Club

Chorale

District Band

Flag Team

Jazz Ensemble

MATHCOUNTS Club

Middle School Audio-Visual Club

Middle School Campus PTO

Middle School Newspaper

National Junior Honor Society

Pep Band

Scholastics

Science Club

Student Council

Technology Club

Yearbook Club

For more specific and up-to-date information on the courses, programs, clubs and organizations mentioned, visit www.wboro.org/middleschoolcampus.

3D PRINTERS & LASER ENGRAVERS



The Whitesboro Middle School Campus has three three-dimensional (3D) printers for students to use. It allows students to print an object that they are designing using special software as a 3D model. The Middle School Campus also has two laser engravers for students to use.





DEERFIELD

ELEMENTARY SCHOOL

NATIONAL BLUE RIBBON SCHOOL OF ACADEMIC EXCELLENCE

The United States Department of Education designated Deerfield Elementary School a National Blue Ribbon School of Academic Excellence. Deerfield Elementary School was recognized as an Exemplary High Performing School for consistently demonstrating that all students can achieve high academic levels.



The New York State Department of Education and the United States Department of Education based selections on data ranging across a five-year span. All students had to perform in the top 15 percent of all schools in New York State on the English Language Arts and Mathematics assessments during the final year of that five-year span.



CONTACT INFORMATION

115 Schoolhouse Road
Deerfield, NY 13502

MAIN OFFICE/PRINCIPAL: 315.266.3410

NURSE'S OFFICE: 315.266.3414

336

Approximate number of students

**Data accurate as of 10/1/2019.*

NOTABLE PROGRAMS/ACTIVITIES

GREEN TEAM

The Green Team is made up of fifth grade students. The club is advised by their teachers. Each classroom recycles on a weekly basis. On Tuesdays and Thursdays, the Green Team collects all of the recyclables and deposits the materials into the appropriate collection bins.

FITNESS TRAIL

Deerfield Elementary School has a fitness trail in the primary hallway. This trail is enjoyed by students of all ages. The trail provides a fun way for students to practice large motor movements.

WELLNESS WARRIORS

Students at Deerfield Elementary School have the opportunity to stay active and learn about healthy habits through Deerfield Wellness Warriors, an after-school program focused on health and wellness for students of all grade levels. During the program, students work together and participate in fun fitness and wellness-related activities, and they also get to engage in conversations about making healthy eating and lifestyle choices. It is a year-long program that students can participate in on a quarterly basis.

For more specific and up-to-date information on the courses, programs, clubs and organizations mentioned, visit www.wboro.org/deerfield.





HART'S HILL ELEMENTARY SCHOOL

NEW YORK STATE REWARD SCHOOL

The New York State Department of Education designated Hart's Hill Elementary School a Reward School.

Hart's Hill Elementary School was one of a select number of schools in New York State that made the most progress or had the highest performance with no significant gaps in student achievement.



CONTACT INFORMATION

8615 Clark Mills Road
Whitesboro, NY 13492

MAIN OFFICE/PRINCIPAL: 315.266.3430

NURSE'S OFFICE: 315.266.3434

354

Approximate number of students

**Data accurate as of 10/1/2019.*



NOTABLE PROGRAMS/ACTIVITIES

MORNING WAKE UP

Held each school day from 9:20-9:30 a.m., Morning Wake Up is an initiative for students, faculty and staff to begin their day with some type of physical exercise, which helps get their brains and bodies alert and ready to learn. Morning Wake Up activities include walking in the hallways with music or other activities selected by the teacher to energize bodies and minds. The initiative helps the school to meet the New York State Physical Education mandate for daily movement at the elementary level.

STEM CAMP

A summer STEM Camp is held for students in third, fourth and fifth grades at Hart's Hill Elementary School. Students engage in a variety of cooperative activities that allow them to use their critical thinking skills to create projects and build models. Teachers from Whitesboro Middle School and Whitesboro High School volunteer their time to assist with the STEM Camp and help students learn more about science and technology.



WARRIORS ON THE MOVE

The program is for fourth and fifth grade students and encourages increased physical activity.

Two sessions are held, one in the fall and one in the spring. When in session, students stay after school twice each week to exercise. Hart's Hill Elementary School staff and volunteers introduce a variety of exercises each week.



For more specific and up-to-date information on the courses, programs, clubs and organizations mentioned, visit www.wboro.org/hartshill.



MARCY

ELEMENTARY SCHOOL



325

Approximate number of students

**Data accurate as of 10/11/2019.*

CONTACT INFORMATION

9479 Maynard Drive
Marcy, NY 13403

MAIN OFFICE/PRINCIPAL: 3 15.266.3420

NURSE'S OFFICE: 3 15.266.3424



NOTABLE PROGRAMS/ACTIVITIES

PBIS PROGRAM (POSITIVE BEHAVIOR INTERVENTION AND SUPPORTS)

The PBIS program creates and maintains a safe and effective learning environment. It ensures all students have social skills needed for success at school and beyond. It also provides a proactive system-wide framework for implementation. The purpose of PBIS is to establish a climate in which appropriate behavior is the norm.

GRADES 3-5 AFTERSCHOOL STEM PROGRAM

STEM allows students to explore topics and concepts with connections to the real world and to future classroom studies. Learning through engaged, hands-on, investigation is the main goal. Each session will provide a problem solving/engineering challenge.



MARCY ON THE MOVE

Marcy on the Move is an after-school program for grades 3-5 students. Students who participate are engaged in running and other physical activities. There are two sessions of this program each year. The first session takes place in the fall and the second session takes place in the spring.

INCOMING KINDERGARTEN PARENT WORKSHOP

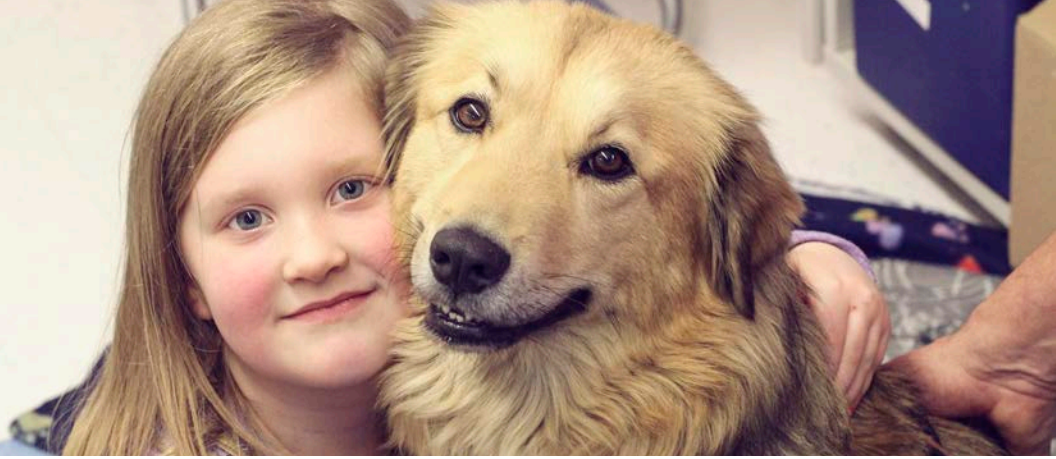
Each year on an evening during the month of March, incoming kindergarten parents, along with their incoming kindergartner are invited to attend a workshop. The parents learn how they can prepare their child for a successful year in kindergarten. While parents attend the workshop, the children engage in a fun activity with teachers in the library.

For more specific and up-to-date information on the courses, programs, clubs and organizations mentioned, visit www.wboro.org/marcy.



PTO ACTIVITIES / FAMILY EVENTS

- Book Fairs
- Family Nights
- Breakfast with Santa
- Fun Day at the end of the school year
- Grade level field trips funded by the PTO



WESTMORELAND ROAD ELEMENTARY SCHOOL

393

Approximate number of students

**Data accurate as of 10/1/2019.*



CONTACT INFORMATION

8596 Westmoreland Road
Whitesboro, NY 13492

MAIN OFFICE/PRINCIPAL: 315.266.3440

NURSE'S OFFICE: 315.266.3444

NATIONAL BLUE RIBBON SCHOOL

“Westmoreland Road Elementary School was named a National Blue Ribbon School for scoring in the top 10 percent on state assessments. The award is presented annually by the United States Department of Education to honor schools that demonstrate academic excellence or that demonstrate dramatic gains in student achievement.

NOTABLE PROGRAMS/ACTIVITIES

PBIS PROGRAM

Positive Behavioral Interventions and Supports is a school-wide systems framework that guides selections, integration and implementation of the best evidence-based academic and behavioral practices for improving outcomes for all students. Our school has three overarching expectations to be safe, respectful and responsible. We use school-wide incentives and recognize students for demonstrating these expectations in all areas of our school community.



WEST ROAD RUNNERS

West Road Runners is a before school program offered to students in grades 3,4, and 5. West Rd. Runners has been developed to inspire, cultivate, and empower students to make good choices, improve self-esteem, and promote overall health. It combines physical fitness, with character building, and educational workouts.



STEM CAMP

Science, Technology, Engineering and Math are the focus of this hands on, inquiry-based learning model. Open to students in grades 3, 4, and 5, our students collaborate and problem solve using fun and engaging activities to explore concepts in science, technology, math and engineering.

MORNING WAKE UP

Each day students in grades K-5 are either walking the hallways or participating in Go Noodle activities for ten minutes. This walk compliments the character education program and is an extension of wellness awareness and development of habits for life-long physical activity.

For more specific and up-to-date information on the courses, programs, clubs and organizations mentioned, visit www.wboro.org/westrd.



GUIDANCE AND PUPIL PERSONNEL SERVICES

An integral component of the total educational program of the Whitesboro Central School District, Guidance and Pupil Personnel Services (PPS) are offered to all students at every grade level.

Students have access to counselors at the elementary, middle and high school levels, as well as access to nurses, social workers and psychologists who serve the District's students in each of our seven school buildings.

The Guidance and PPS staff partners with our students, educators, parents and community members to create an educational environment conducive to the academic, personal, social, and career growth of all students. The District's guidance counselors specifically address the needs of each student by offering academic, personal development, college and vocational planning. The ultimate goal of Guidance and PPS is to develop and implement an individual blueprint for each student built on his or her strengths to ensure that all of our students are college, career, and life ready upon graduation.

CONTACT INFORMATION

HIGH SCHOOL GUIDANCE OFFICE: 315.266.3240

MIDDLE SCHOOL GUIDANCE OFFICE: 315.266.3112



ROLE OF A COUNSELOR

- Academic counseling
- Orient new students to school
- Participate in conferences with teacher teams
- Facilitate conferences with parents and teachers
- Facilitate the referral process to help students and families connect with outside agencies
- Participate on the Child Study Team and Committee on Special Education
- Guide students' academic and career plans
- Analyze test results and provide information about students' achievement scores
- Present classroom guidance activities, including: decision making, career information, course selection, and graduation requirements
- Distribute information to students regarding colleges and the financial aid process
- Guide students through the college application process

SCHOLARSHIPS

Whitesboro High School, with help from its community partners, awards approximately 75 scholarships to graduating seniors annually.

GUIDANCE AND PUPIL PERSONNEL SERVICES ONLINE

The following can be found at www.wboro.org/guidance:

- Complete Guidance Calendar
- College Visits Calendar
- SAT/ACT Information and Dates
- Financial Aid Information
- Scholarship Information





SPECIAL PROGRAMS AND SERVICES

The Whitesboro Central School District's Special Programs and Services Department provides and/or coordinates services for more than 500 students with disabilities ranging in age from 3 to 21.

Children with special academic, social/emotional, behavioral and physical needs are provided a high quality education in the least restrictive environment possible.

The Department also conducts a wide range of assessments and consultations and provides numerous services, including psychological services, counseling, speech therapy, occupational therapy, physical therapy, teacher of the hearing impaired, teacher of the visually impaired, orientation and mobility training, rehabilitation training, and vocational training, to name a few.

CONTACT INFORMATION

SPECIAL EDUCATION DEPARTMENT: 315.266.3309



IN-DISTRICT PROGRAMS

- Consultant teacher
- Resource room
- Self-contained classrooms

*Find a complete list on
www.wboro.org/sped*





INFORMATION/ INSTRUCTIONAL TECHNOLOGY

The Whitesboro Central School District recognizes that information technology is a powerful tool that can help facilitate the success and achievement of all learners by providing opportunities to research, communicate, collaborate, engage and inspire. It is the goal of the Information and Instructional Technology Department to provide a safe, secure environment in which all students and staff are provided with the tools necessary to become effective users of current and emerging technologies.

To that end, the department provides and supports numerous information technology devices, systems and services to assist all learners in achieving academic success, college and career readiness, and lifelong learning.

INFORMATION TECHNOLOGY HIGHLIGHTS

- Districtwide high-speed wireless network and internet access
- Classrooms and instructional spaces outfitted with interactive whiteboards, projectors, electronic document cameras, Chromebooks and laser printers
- Classroom audio systems with teacher and student microphones for increased clarity, intelligibility and collaboration
- Access to numerous online resources for instruction, learning and research
- Access to cloud computing resources and tools including Google G Suite, for increased collaboration, innovation, flexibility and efficiency
- Mobile devices including Chromebooks, iPads, and PC laptops
- Desktop computer labs, including specialized Project Lead The Way (PLTW) labs
- Modern network infrastructure, servers and systems to support learning, safety, security and District operations

CONTACT INFORMATION

INFORMATIONAL/INSTRUCTIONAL TECHNOLOGY: 315.266.3314

GOOGLE G SUITE AND GOOGLE CLASSROOM

The Whitesboro Central School District subscribes to Google G Suite, as part of a continued effort to provide its students with opportunities to creatively learn, engage and collaborate.

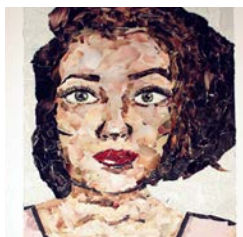
G Suite is a secure, free, cloud-based platform used by numerous K-12 schools and universities throughout the country. It enables students and staff to communicate, create documents and collaborate with one another through the use of email and a host of other tools.

Google Classroom streamlines the use of G Suite tools, by providing an integrated and blended learning platform for each individual class. It simplifies the paperless creation, distribution and grading of assignments, and helps each class connect and stay organized. Teachers can easily communicate, share assignments, provide materials and offer help and feedback.

Students and teachers can use G Suite from any internet-enabled device in and out of school, making “any time, any place” learning a reality.



THE ARTS



The Whitesboro Central School District places a strong emphasis on the Arts, ensuring that each student has opportunities to become a well-rounded individual.

Creativity, freedom of expression, and independent thinking are all highly encouraged and made possible through a wide variety of course offerings.

Both art and music are offered at the elementary level and throughout middle school and high school.

CONTACT INFORMATION

ART DEPARTMENT CHAIR: 315.266.3100

MUSIC DEPARTMENT CHAIR: 315.266.3410

More information and concert calendar available on www.wboro.org/music.



MUSIC

The Whitesboro Central School District offers a comprehensive music program, consisting of classroom music, as well as nine choruses, 13 bands and 11 orchestras.

Classroom Music

- K-Grade 5: One 40-minute class per six-day cycle
- Grades 6-8: Ten weeks per year (required of all students)
- Vocal Music (Grades 4-12)
- Instrumental Music – Woodwind, Brass and Percussion (Grades 4-12)
- Instrumental Music – Strings (Grades 4-12)
- Extracurricular Music Ensembles (Grades 4-12)

The high school and middle school each have a biennial musical.

ART

The Whitesboro Central School District also offers an extensive art program, featuring instruction at the elementary and middle school level, and a plethora of optional courses at the high school level.

Classroom Art

- K-Grade 5: One 40-minute class per six-day schedule
- Grades 6-8: Ten weeks per year (required of all students)
- Grades 9-12: One full credit of art, music or technology is required to graduate

Art courses offered at the high school level

- Studio Art: Introductory course; introduces the fundamental concepts of the visual arts
- Drawing and Painting
- Advanced Drawing and Painting
- Ceramics
- Photography
- Digital Imagery
- Portfolio Class / AP Art

Both middle school and high school students participate in the National Scholastic Art Awards Program, Congressional Art Awards Program, and Munson Williams Proctor Arts Institute Sidewalk Art Show.

ATHLETICS

Known as the “Home of the Warriors,” the Whitesboro Central School District’s Athletic Program is rich in history and tradition.

The Athletic Department’s motto is, “Building Excellence Together.” Student-athletes are not only expected to perform at a high level on the playing field, but in the classroom, as well. One team’s success means success for all.

FACILITIES

Chiz Frye Field

Football, Lacrosse

Wadas Athletic Complex

Soccer, Field Hockey, Baseball, Lacrosse and Track

High School Gym

Basketball, Volleyball and Wrestling

Middle School Gym

Basketball

Parkway Gym

Volleyball

Middle School Fields

Field Hockey, Softball, Baseball and Lacrosse

Hart’s Hill Elementary School

Soccer

Marcy Elementary School

Soccer, Lacrosse, Tennis and Wrestling

Westmoreland Road Elementary School

Soccer and Softball

Deerfield Town Park

Cross Country

Hidden Valley Golf Course

Golf

Utica College

Swimming

Valley Gymnastics

Gymnastics

Vista Lanes

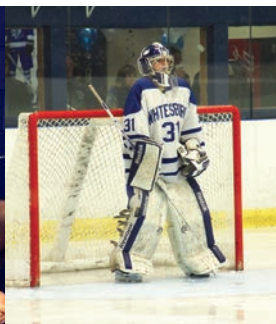
Bowling

Whitestown Recreation Center

Hockey

CONTACT INFORMATION

ATHLETIC DEPARTMENT: 315.266.3215



VIDEOSTREAMING

Select Whitesboro athletic contests are videostreamed in high definition live on www.wboro.org. Most videostreams include play-by-play and color analysis. Broadcast times are announced in advance on the school website.

Select concerts and other educational events are also videostreamed throughout the school year.

All videostreamed events are archived on the website.

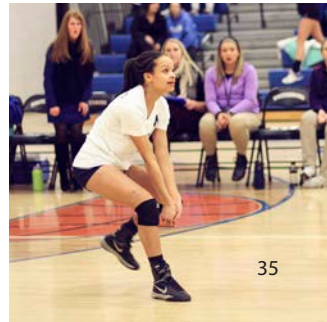
GOLD PASSES

Community members 60 and older wishing to apply for a Whitesboro Central School District Gold Pass should contact the District Clerk at the Administration Building at 315.266.3303.

The pass entitles the card bearer to discounted or free admission to all home events.

Proof of residency is required when applying for the card and the pass is effective only as long as an individual is a legal resident of the Whitesboro Central School District.

For more up-to-date information, schedules and a list of sports offered each season, visit www.wboro.org/athletics.



CHIZ FRYE FIELD

Chiz Frye Field, named after legendary varsity football coach Chiz Frye, is the home of the Whitesboro Football Program. The varsity, junior varsity and modified football teams all play and practice at the field. The field can also accommodate other sports, such as soccer and field hockey.

Chiz Frye Field is a natural grass field and is meticulously maintained during the season by the Whitesboro Buildings and Grounds staff.

There is a press box, concession area and seating is available on both sides.



WADAS ATHLETIC COMPLEX

At the high school, the Wadas Athletic Complex, named after Whitesboro alumnus and long-time school supporter Ed Wadas, features artificial turf and lights.

A variety of sports teams utilize the field for practice. Additionally, the field serves as the official home game site for boys and girls varsity soccer, boys and girls varsity lacrosse and varsity field hockey. Some modified football games occur there, as well.

In addition to the artificial turf, there is an eight lane track, two long jump pits, a pole vault pit and a water pit to accommodate steeplechase, all of which is utilized by boys and girls track. The field also includes a press box and seating for hundreds of fans.

The Wadas Athletic Complex is a tremendous asset to not only Whitesboro's athletic teams, but the entire Whitesboro community.



ALUMNI ASSOCIATION

The Whitesboro Alumni Association (WAA) is one of the oldest not-for-profit high school alumni associations in the United States. It is led by a volunteer Board of Directors, which meets on a monthly basis.

PURPOSE:

To support current students and alumni, the WAA provides a variety of benefits, focusing on:

- Awarding scholarships to graduating seniors
- Honoring outstanding teachers through the Teachers' Hall of Fame
- Supporting school and student programs
- Publishing a semi-annual newsletter

TEACHERS' HALL OF FAME

The Teachers' Hall of Fame was established to recognize teachers for outstanding service to the Whitesboro Central School District whose, "professional capability, integrity, and sympathetic understanding inspired the admiration, respect and loyalty of students and associates, and whose wisdom and foresight left a lasting influence on the Whitesboro Central School District."

The Whitesboro Central School District was the first district in the United States to establish a Teachers' Hall of Fame. The first teacher was inducted in 1968.

Each member has a bronze plaque enshrined on a wall at the high school in their honor.

HOW TO BECOME A MEMBER

We want you! If interested in becoming a member of the WAA, you can download a membership application located on the WAA's website.

CONTACT INFORMATION

OFFICERS AND CONTACT INFORMATION ARE LISTED ON WWW.WBOROALUMNI.ORG

For more information on the WAA and its yearly activities, visit www.wboroalumni.org.





INSPIRE, CULTIVATE, EMPOWER

WHITESBORO CENTRAL SCHOOL DISTRICT
65 ORISKANY BOULEVARD
WHITESBORO, NEW YORK 13492
WWW.WBORO.ORG