



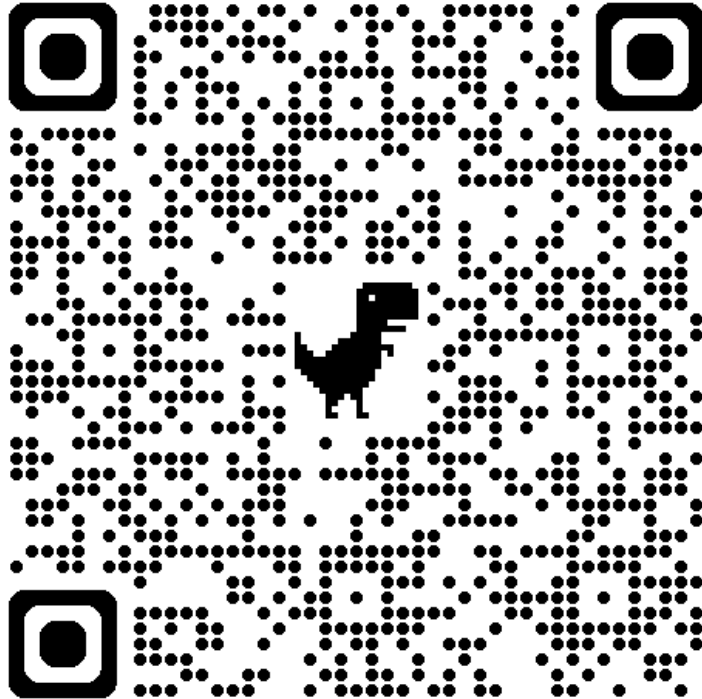
K-8 Community Focus Groups

May 21-22 2024



Learner-Centered
COLLABORATIVE

To access this evening's presentation



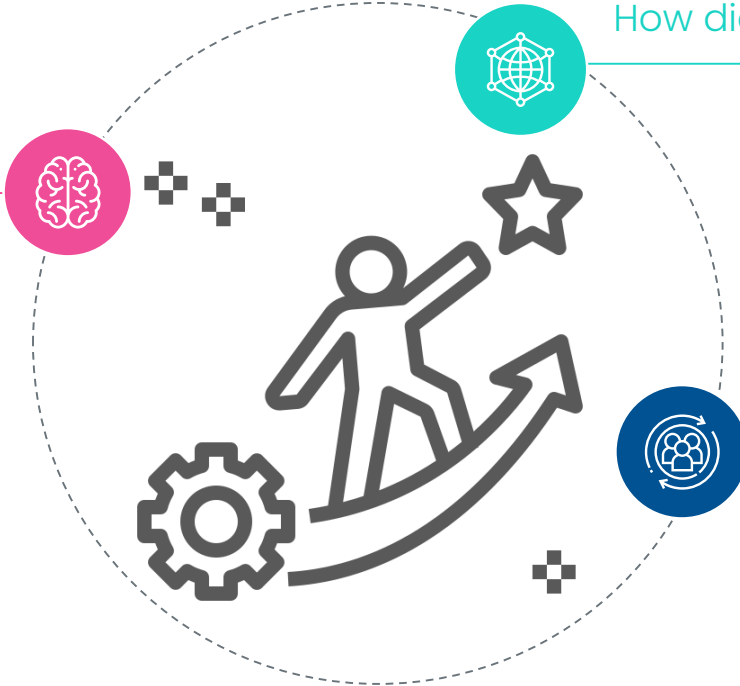
bit.ly/acpspk8

Describe a memorable learning experience.



What did you learn?

A light pink rectangular area with a folded bottom-right corner, intended for writing the answer to 'What did you learn?'.



How did you learn what you learned?

A light teal rectangular area with a folded bottom-right corner, intended for writing the answer to 'How did you learn what you learned?'.

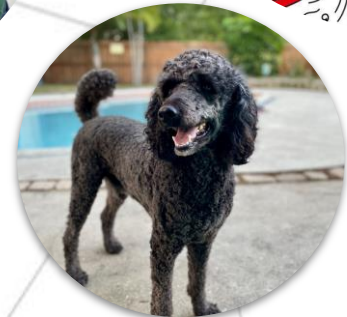
How did you feel?

A light blue rectangular area with a folded bottom-right corner, intended for writing the answer to 'How did you feel?'.



Who am I?

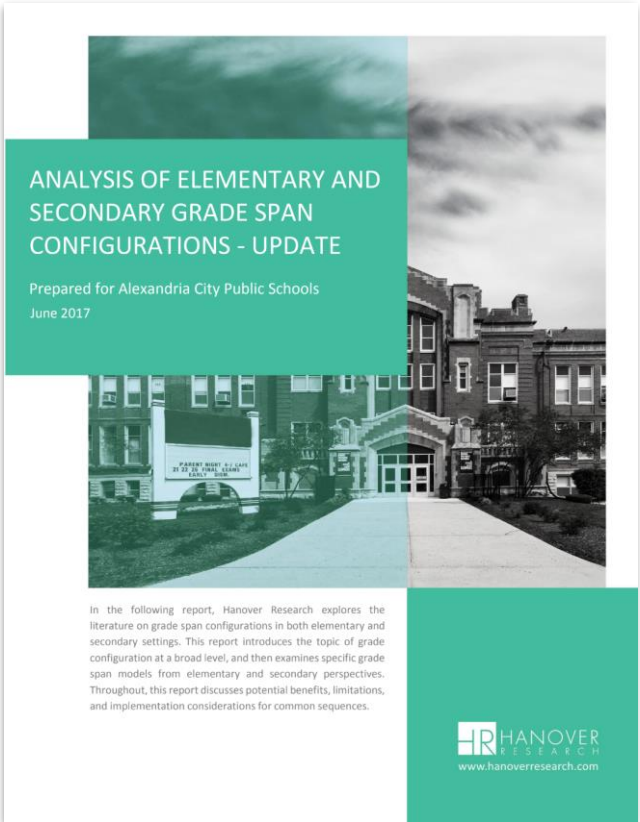
Workout enthusiast, **mom**, crafter, textbook author, **Francophile**, traveler, instructional coach, and **learner-centered** consultant



Top 5 Strengths:
Relator, Strategic, Achiever,
Learner, Discipline



Why a preK-8 Analysis? Why now?



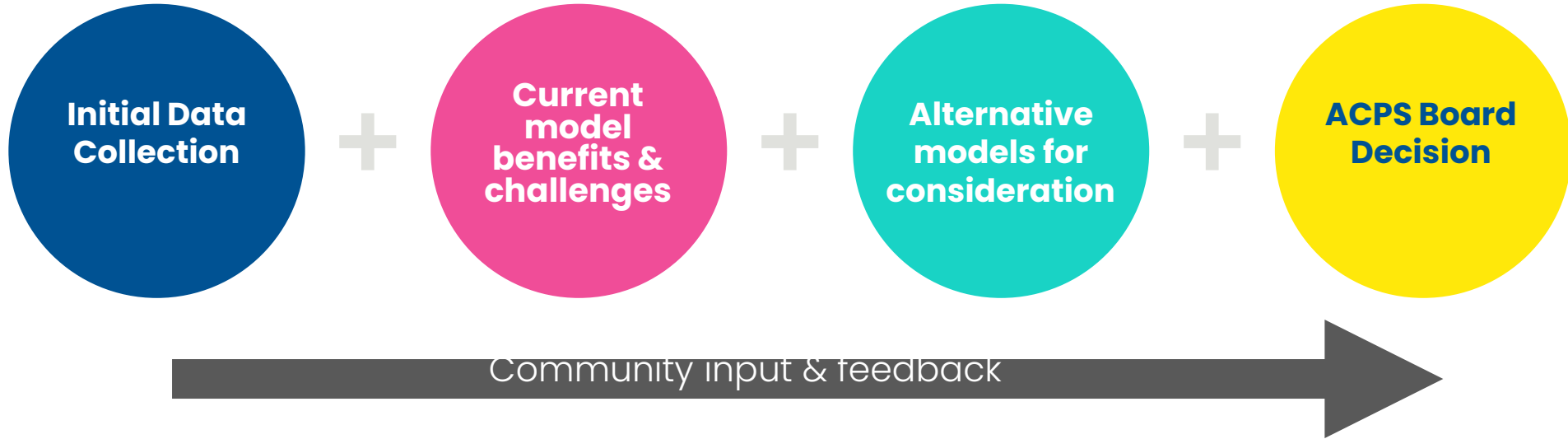
ANALYSIS OF ELEMENTARY AND SECONDARY GRADE SPAN CONFIGURATIONS - UPDATE

Prepared for Alexandria City Public Schools
June 2017

In the following report, Hanover Research explores the literature on grade span configurations in both elementary and secondary settings. This report introduces the topic of grade configuration at a broad level, and then examines specific grade span models from elementary and secondary perspectives. Throughout, this report discusses potential benefits, limitations, and implementation considerations for common sequences.

 HANOVER
RESEARCH
www.hanoverresearch.com

The Work in 4 Phases



How will my input be included?

Async & Ongoing | Community Q&A

Who is the consultant performing the K-8 analysis?

For the qualitative interviews happening in May, how will staff/families/students be selected for those interviews?

I am wondering if these plans are taking into consideration the new apartment buildings going up at the old Landmark Mall location?

Where will students be placed if grade assignments are changed for the schools?
There's no room!

What caused ACPS to undertake this analysis at this time? Was it planned in advance, or is it based on current trends? If the latter, what trends are motivating the analysis?

Surveys | Week of May 28th



Who will be surveyed?

- Teachers
- School Leaders
- Students
- Community Members
- Families
- Central Office Staff

Virtual & In-Person Sessions

Key Dates

- *May 21st – 22nd*
- May 28th
- June 18th
- July 30th
- August 27th



Desired Outcomes



- Connect with one another
- Listen deeply to understand diverse perspectives
- Collect community aspirations for learners in ACPS

What can we celebrate?

Celebrations

-
-
-
-
-
-
-
-
-

-
-
-
-
-
-
-
-
-



We must, **as a community**, rethink what we want for learners, what we **value**, and how we **define success** in order to work together to actually make those things happen in our schools.

#EvolvingEducation

Form 3 groups

Introduce yourself to your group

Grab a piece of chart paper + marker

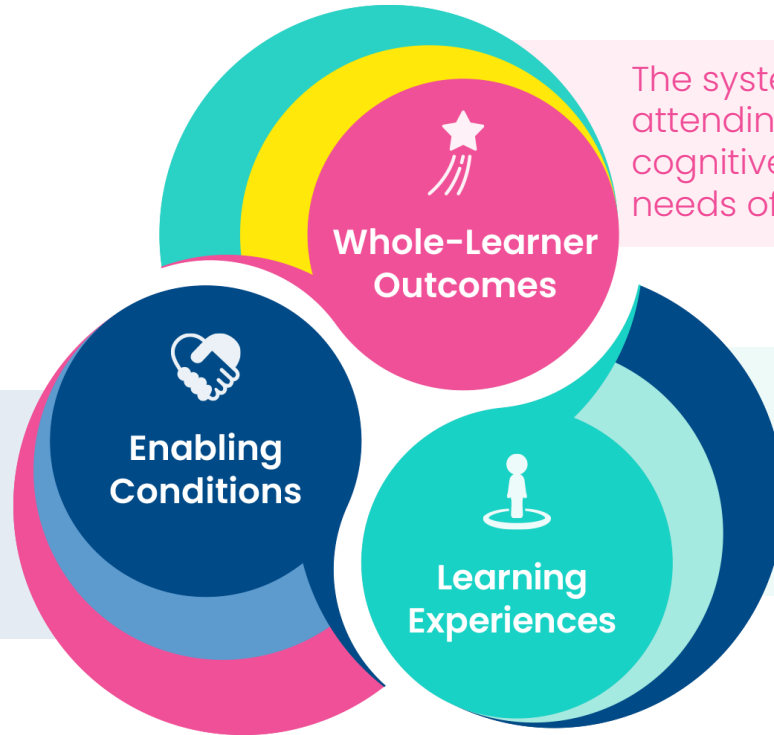
Draw a circle the size of a plate in the center of your poster

What are the outcomes (skills, knowledge, & habits) students need to be successful in life?

What does learning need to look like to
get those outcomes?

What conditions need to be in place?

Our Learner-Centered Framework



The conditions that are critical to support the learning experiences that lead to desired learner-centered outcomes.

**Enabling
Conditions**

The system is centered on attending to the social, emotional, cognitive, and mental health needs of learners.

**Whole-Learner
Outcomes**

The experiences that are co-designed and facilitated with learners to ensure they can demonstrate mastery of desired learner outcomes.

**Learning
Experiences**

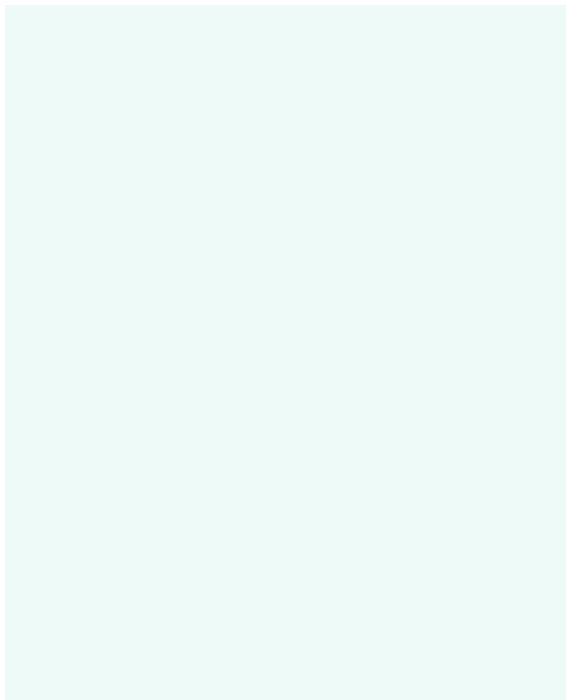


Share
Out

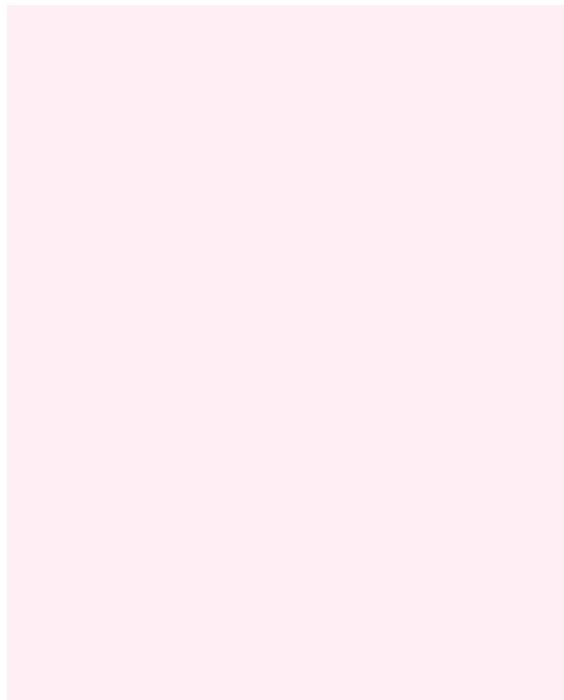
Bio Break



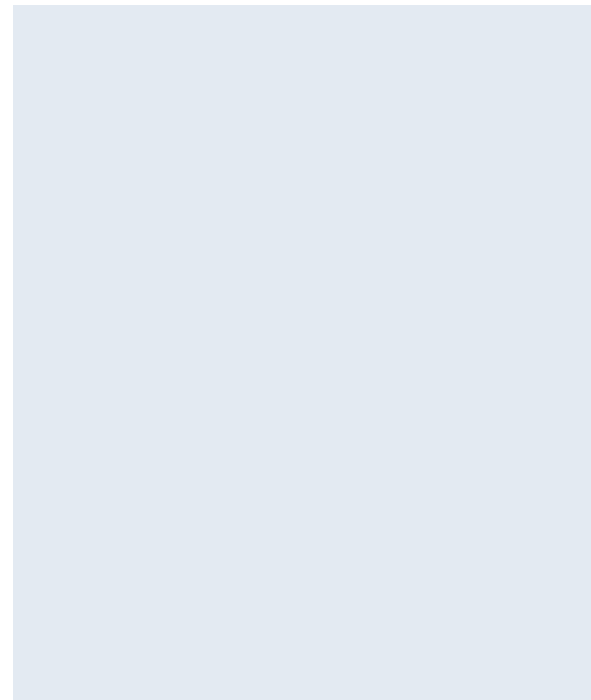
Start



Stop



Continue



Improve the existing pK-8 Model

Jefferson
Houston

Pros

-

Cons

Transition to K-5 and feed into an existing MS

Jefferson
Houston

Pros

Cons

Transition to K-5 and feed into a new MS

Jefferson
Houston

Pros

Cons

Transition to 6-
8 fed by
existing ES

Jefferson
Houston

Pros

Cons

One school
becomes MS,
the other an ES

Jefferson
Houston

Pros

Cons

If you had to
pick a model
today

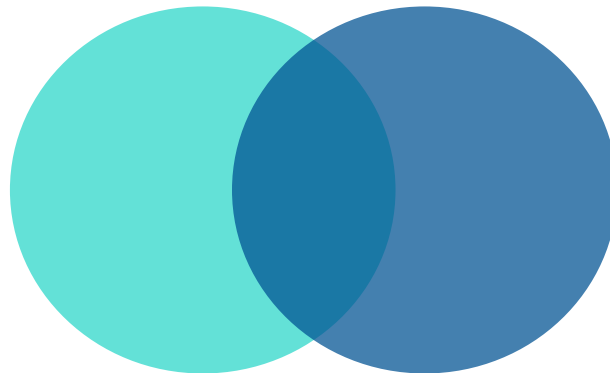
Jefferson
Houston

- Improve the existing K-8 Model
- Transition to K-5 and feed into an existing MS
- Transition to K-5 and feed into a new MS
- Transition to 6-8 fed by existing ES
- One school becomes MS, the other an ES

“

*Invite everyone who cares to work
on what's possible.*

Margaret Wheatley



Want to learn more about Learner-Centered Collaborative?



Visit

www.LearnerCentered.org



Email

collaborate@LearnerCentered.org



Follow

[@LCCollaborative](https://twitter.com/LCCollaborative)



Share

[#LCBrightSpots](https://twitter.com/LCCollaborative)

[#LearnerCentered](https://twitter.com/LCCollaborative)



Sign up for our
newsletter, tools,
blogs & more!



Learner-Centered
COLLABORATIVE

OPTION 2 | Notes for Pierrette

- This assumes a bigger group (more of a forum than a focus group) - is that right? Or will we truly have ~7 participants?
- If it really is 7, I can easily pivot!
- Please see open comments

Community Input Session

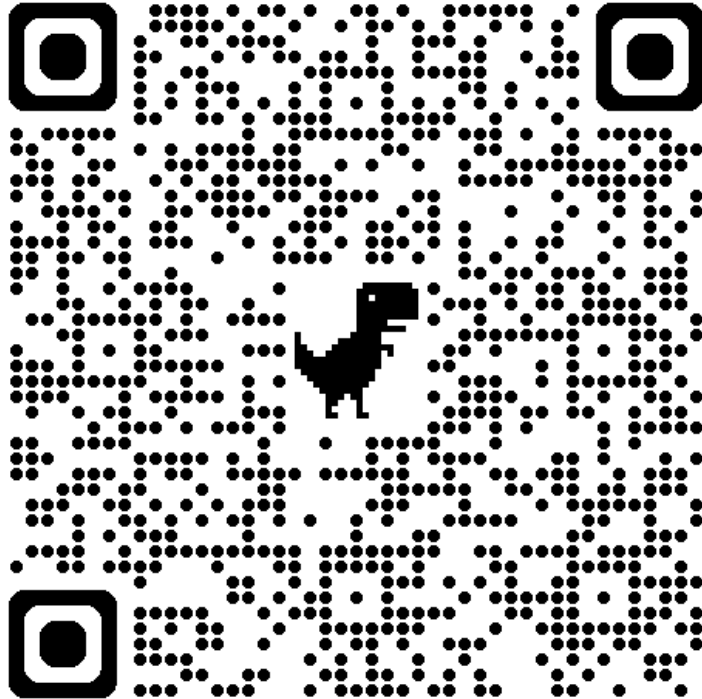
May 2024



Learner-Centered
COLLABORATIVE



To access this evening's presentation

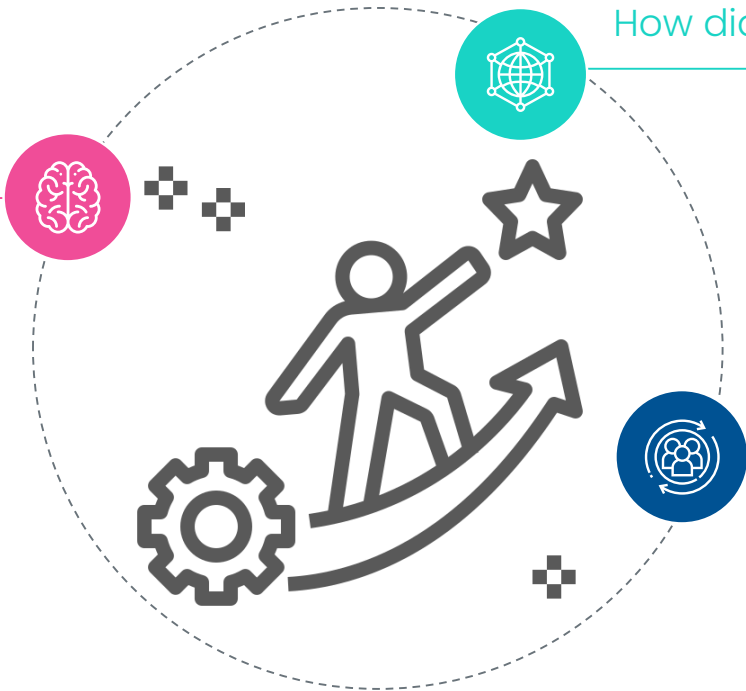


bit.ly/acpspk8

Describe a memorable learning experience.



What did you learn?

A blank, light pink sticky note with a folded bottom-right corner, intended for the user to write their response to the question 'What did you learn?'.

How did you learn what you learned?

A blank, light green sticky note with a folded bottom-right corner, intended for the user to write their response to the question 'How did you learn what you learned?'.

How did you feel?

A blank, light blue sticky note with a folded bottom-right corner, intended for the user to write their response to the question 'How did you feel?'.



Top 5 Strengths:
Relator, Strategic, Achiever,
Learner, Discipline

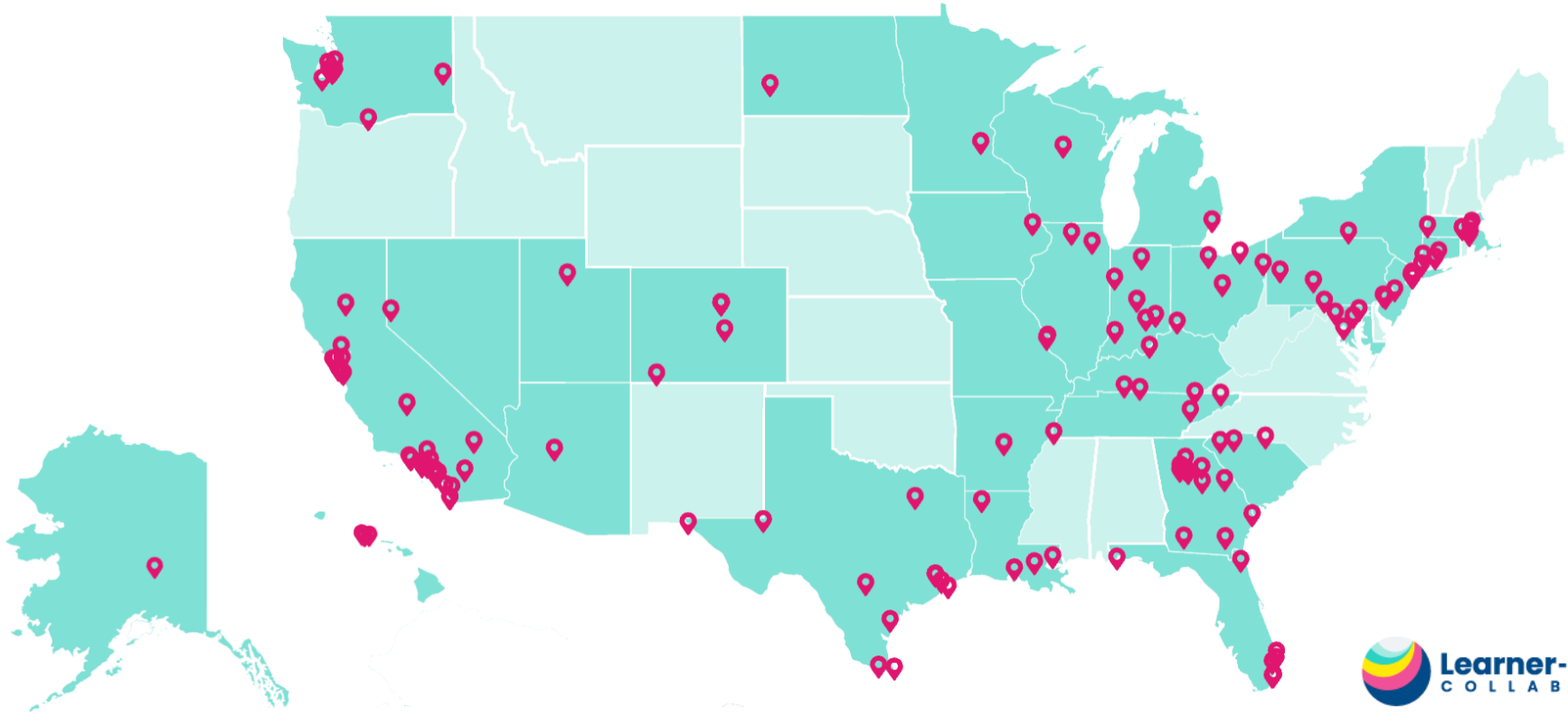
Who am I?

Workout enthusiast, **mom**, crafter, textbook author, **Francophile**,
traveler, instructional coach, and **learner-centered** consultant

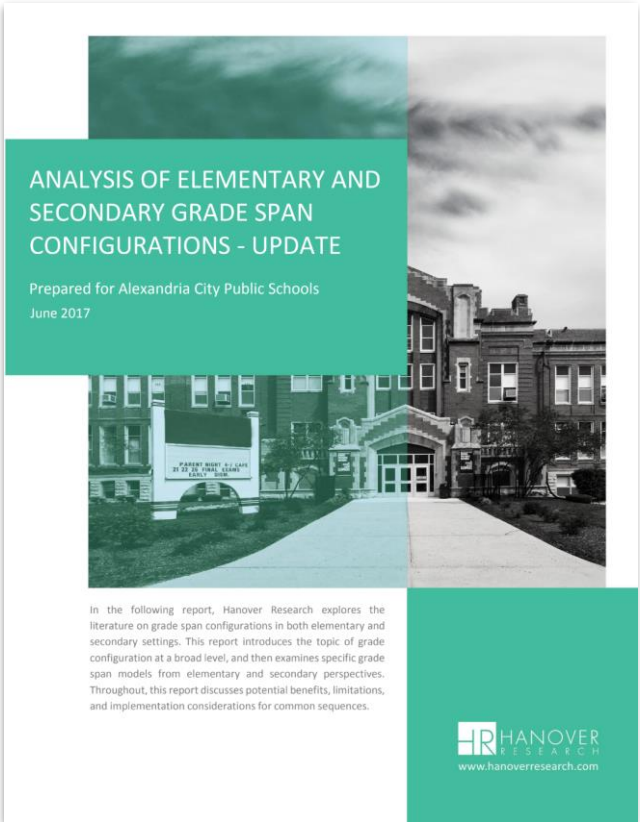


Our Growing Partner Network

Over 150 partners in 30+ states



Why a preK-8 Analysis? Why now?



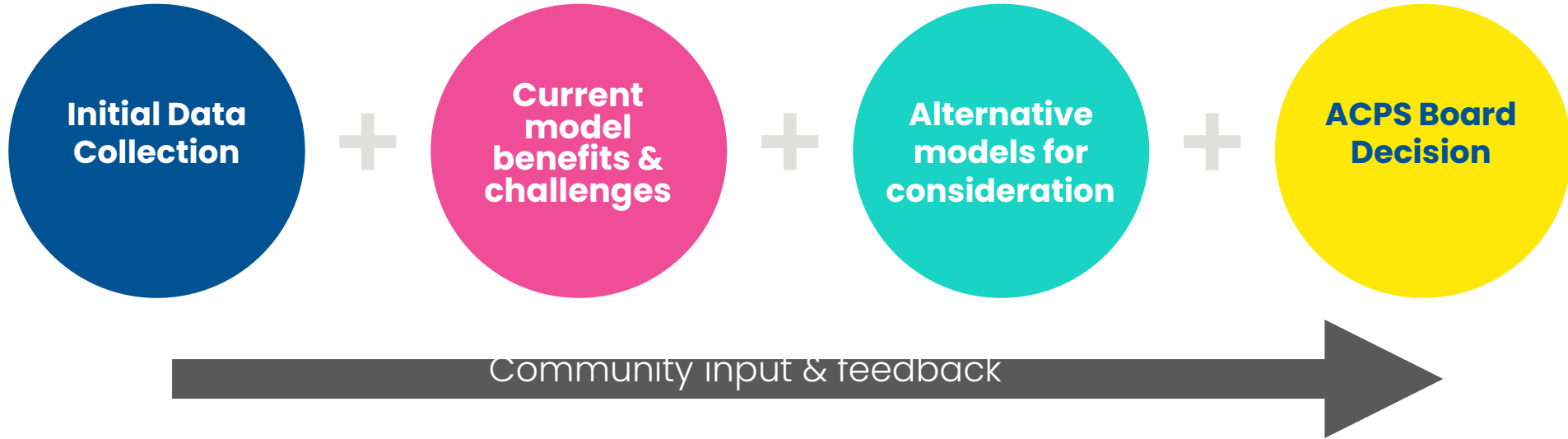
ANALYSIS OF ELEMENTARY AND SECONDARY GRADE SPAN CONFIGURATIONS - UPDATE

Prepared for Alexandria City Public Schools
June 2017

In the following report, Hanover Research explores the literature on grade span configurations in both elementary and secondary settings. This report introduces the topic of grade configuration at a broad level, and then examines specific grade span models from elementary and secondary perspectives. Throughout, this report discusses potential benefits, limitations, and implementation considerations for common sequences.

 HANOVER
RESEARCH
www.hanoverresearch.com

The Work in 4 Phases



How will my input be included?

Async & Ongoing | Community Q&A

Who is the consultant performing the K-8 analysis?

For the qualitative interviews happening in May, how will staff/families/students be selected for those interviews?

I am wondering if these plans are taking into consideration the new apartment buildings going up at the old Landmark Mall location?

Where will students be placed if grade assignments are changed for the schools?
There's no room!

What caused ACPS to undertake this analysis at this time? Was it planned in advance, or is it based on current trends? If the latter, what trends are motivating the analysis?

Surveys | Week of May 28th



Who will be surveyed?

- Teachers
- School Leaders
- Students
- Community Members
- Families
- Central Office Staff

Virtual & In-Person Sessions

Key Dates

- *May 21st – 22nd*
- May 28th
- June 18th
- July 30th
- August 27th



Desired Outcomes



- Connect with one another
- Listen deeply to understand diverse perspectives
- Collect community aspirations for learners in ACPS

What can we celebrate?

Celebrations

-
-
-
-
-
-
-
-
-
-

-
-
-
-
-
-
-
-
-
-



We must, **as a community**, rethink what we want for learners, what we **value**, and how we **define success** in order to work together to actually make those things happen in our schools.

#EvolvingEducation

Form groups of 4-5

Introduce yourself to your group

Grab a piece of chart paper + marker

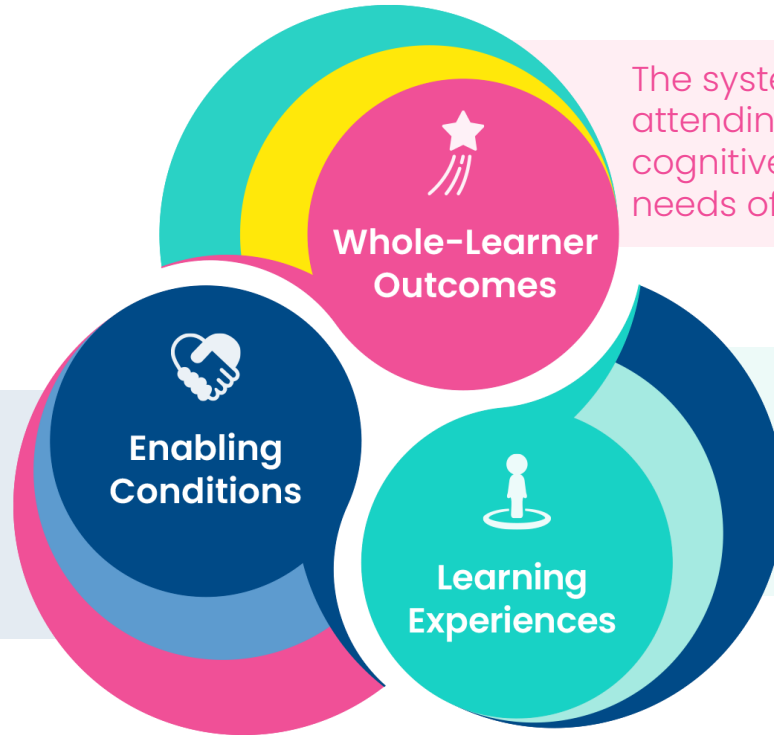
Draw a circle the size of a plate in the center of your poster

What are the outcomes (skills, knowledge, & habits) students need to be successful in life?

What does learning need to look like to
get those outcomes?

What conditions need to be in place?

Our Learner-Centered Framework



The conditions that are critical to support the learning experiences that lead to desired learner-centered outcomes.

**Enabling
Conditions**

The system is centered on attending to the social, emotional, cognitive, and mental health needs of learners.

**Whole-Learner
Outcomes**

The experiences that are co-designed and facilitated with learners to ensure they can demonstrate mastery of desired learner outcomes.

**Learning
Experiences**



Choose a Host

Host:

- remains at the table
- welcome new travelers
- briefly share main ideas, themes and questions from the initial conversation

Travelers:

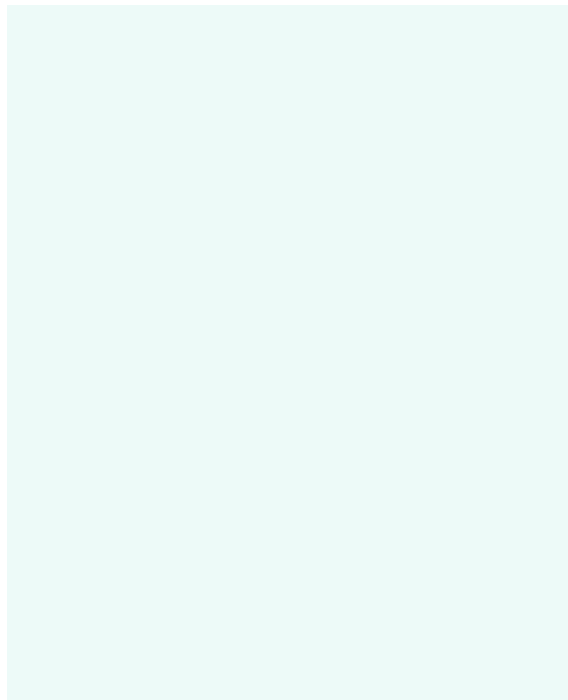
- carry key ideas, themes, and questions
- link and connect ideas from their previous table conversations
- listen carefully and building on each other's contributions.



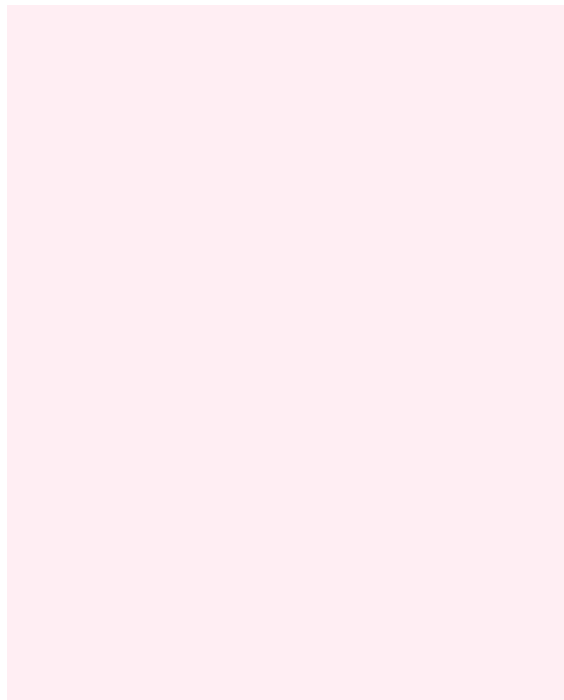
Bio Break



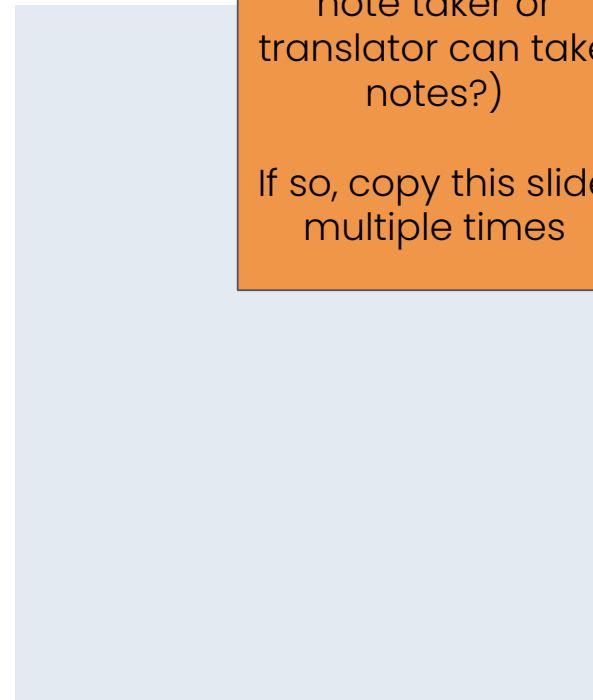
Start



Stop



Q



Can we have a device per group (possibly an ACPS note taker or translator can take notes?)

If so, copy this slide multiple times

Explore other groups' slides



Bio Break



Improve the existing pK-8 model

Transition to K-5 and feed into an **existing** MS

Transition to K-5 and feed into a **new** MS

Transition to 6-8 fed by existing ES

Can we have a device per group (possibly an ACPS note taker or translator can take notes?)

If so, copy this slide multiple times

PROS

CONS

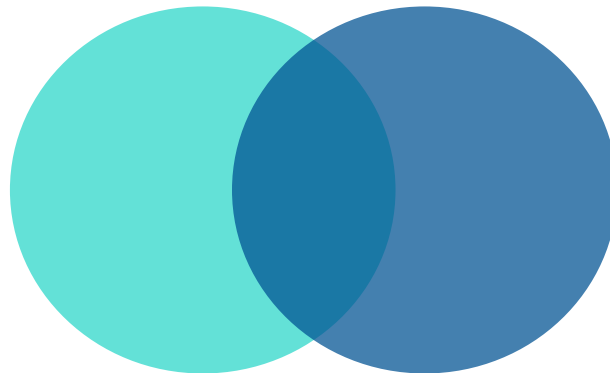


Share
Out

“

*Invite everyone who cares to work
on what's possible.*

Margaret Wheatley



Want to learn more about Learner-Centered Collaborative?



Visit

www.LearnerCentered.org



Email

collaborate@LearnerCentered.org



Follow

[@LCCollaborative](https://twitter.com/LCCollaborative)



Share

[#LCBrightSpots](https://twitter.com/LCCollaborative)

[#LearnerCentered](https://twitter.com/LCCollaborative)



Sign up for our
newsletter, tools,
blogs & more!



Learner-Centered
COLLABORATIVE