



MOA ARCHITECTURE
COLORADO | WYOMING

DAY #1 MEETING NOTES

PROJECT: **BVSD- Louisville Middle School** MEETING DATE: **2024.04.16**
1341 Main Street, Louisville, CO 80027 PROJECT NO: **24114.00**

BY:	(GM)Gregory Martin, MOA ARCHITECTURE	LOCATION:	MSCS
Participants:	(SH)Stephen Henry, BVSD Project Manager (PA)Phil Astras, LMS Teacher (EH)Evan Hiatt, LMS Student (KB)Katie Barela, Howell Construction (GC)Gardner Clute, MOA ARCHITECTURE	(CM)Chris Meyer, LMS Principal (HZ)Humberto Zelaya, BVSD (JT)Jordan Taylor, MOA ARCHITECTURE (CK)Christoph Konradi, BVSD PM	

DISCUSSION

Introductions and Project Overview

- GC spoke about forthcoming design options and reminded everyone these options are intended to communicate possible design options. As design gets more refined and cost models are built there will likely be difficult choices regarding scope.
- Schedule reviewed:
 - May 3, 2024 Schematic Design Submission
 - June 28, 2024 Design Development Submission
 - September 13, 2024 Construction Document Submission
- CK requests Art Room pottery wheels to be upgraded to motorized

CTE Plan Discussion lead by Jordan Taylor

- JT presents plans and elevations
 - Two existing storage rooms combined into one single room with stainless steel shelving.
 - 3d and classroom printers relocated from main space here.
 - Consider leaving 3d printer in existing location. Relocate other computer printers.
 - Built in countertop replaces current tables used as computer stations on the corridor partition
 - Casework added to wall that divides tech space from shop space
 - Power from ceiling with retractable cord reels added
 - Current quiet room divided in half; one space for quiet room and other space a shared office
 - Furniture options reviewed
- User feedback
 - Printers in closet are problematic. Students use these frequently and district prefers students stay within sight of teachers.
 - Exhaust of 3d printer is currently out a window and should be addressed by the design team.
 - Concept of flexibility discussed extensively
 - Furniture preferred over casework
 - Ability to adjust shelving is imperative for this classroom as student projects frequently vary in size.
 - District has major concerns with storage space
 - District open to standing height tables with storage underneath.
 - Team agrees to remove windows on corridor side of classroom to make room for more storage
 - Additional tall cabinets preferred storage for teacher use. Lower base cabinets for student use.

ITEM	ACTION	DISCUSSION
------	--------	------------

- Open adjustable shelving required for student project work storage.
- Reference Equipment list provided by PA for specific equipment needs

Life Skills Discussion lead by Gregory Martin

- GM presents 3d image of demonstration table and elevation of Standard Teaching wall per BVSD spec.
- Three options discussed
 - Concept A keeps student stations existing to remain and eliminates one half height wall to create a single lecture space with teaching wall and dedicated teaching station with demonstration table.
 - Concept B eliminates all half height walls and creates student stations through the entire space with a dedicated teaching station with demonstration table.
 - Concept C provides (4) new student stations and lecture space seating 18 students along with a dedicated teaching station with demonstration table.
 - Furniture similar to CTE space presented.
- User feedback
 - Classroom needs a lecture space for 30 students.
 - Ideal design would include 6 workstations.
 - Likes teaching station and willing to use it as student station.
 - Workstation makeup
 - Oven
 - Two stations Could potentially share oven.
 - Look at providing stacked ovens for space.
 - Two burner stove top
 - Sink
 - District likes 2 compartment sinks but willing to consider 1 compartment based on countertop space available.
 - Design team to explore eliminating windows to corridor. Potentially locate teaching wall on this space.
 - 1 Dishwasher for room will be sufficient.
 - Could be located in closet with washer/dryer.
 - More pantry space desired. Built in's OK.
 - Microwave would be an ideal addition to shared space.
 - Currently one refrigerator. Would like more refrigerator space. Freezer not needed but would prefer to have one.
 - Art Room mentioned more power is needed in their space. Providing motorized pottery wheels would be ideal for Art.

CREATE THE FUTURE

LOUISVILLE MIDDLE SCHOOL DAT #2



AGENDA

- WELCOME & INTRODUCTIONS
- SCOPE OF THE PROJECT
 - Budget Alignment
- EXERCISES
 - CTE Plan Discussion
 - Life Skills Plan Discussion
- WHAT'S NEXT? FUTURE DATES

INTRODUCTIONS

MOA ARCHITECTURE TEAM



Gardner
Clute



JT
Miller



Greggory
Martin

DESIGN PROCESS / PROJECT SCOPE



BOULDER VALLEY
SCHOOL DISTRICT

LOUISVILLE MIDDLE SCHOOL

Imagine the Possibilities

DESIGN PROCESS

- SCHEMATIC DESIGN (SD) Complete May 3rd
 - SIMPLE DRAWINGS TO ILLUSTRATE DESIGN IDEAS
 - OUTLINE SPECIFICATIONS INCLUDING WRITTEN DESCRIPTION OF BUILDING SYSTEMS
 - DESIGN DEVELOPMENT (DD) Complete June 28th
 - DRAWINGS TO DESCRIBE OVERALL DESIGN IDEAS
 - ONLY SELECT DETAILS AT THIS LEVEL OF DESIGN
 - BUILDING SYSTEMS ARE DESCRIBED IN DRAWINGS
 - PROJECT MANUAL INCLUDING SPECIFICATIONS AND COST ESTIMATES
 - PROJECT PHASING DEFINED IF ANY
- *THE D.A.T. ROLE IS ESSENTIALLY COMPLETE AT THE CONCLUSION OF THIS PHASE.
- CONSTRUCTION DOCUMENTS (CD) Complete September 13th
 - INSTRUCTIONS FOR THE CONTRACTOR
 - INCLUDES ALL DETAILS NEEDED FOR CONSTRUCTION
 - INCLUDES SPECIFICATIONS

CRITICAL NEEDS

Investing in our Schools

 BOULDER VALLEY SCHOOL DISTRICT



Louisville Middle School

1341 Main Street | Louisville, CO 80027

Gross Square Footage: 101,483 sq. ft.

Original Construction Date: 1939

Estimated Project Budget: \$2,123,000*

**Final budget will be determined during the design phase.*

Overview of work to be completed:

Building Envelope	<ul style="list-style-type: none">• Repair/replace deteriorating areas of roof and roof components
Building Systems	<ul style="list-style-type: none">• Repair/replace deteriorating HVAC and electrical systems components to avoid potential systems failures• Update obsolete HVAC controls
Safety/Code	<ul style="list-style-type: none">• Update fire protection system
Career & Technical Education Improvements	Louisville Middle is eligible to receive up to \$455,000 in additional funds to invest in renovations to create learning environments to support career & technical education.



BOULDER VALLEY
SCHOOL DISTRICT

LOUISVILLE MIDDLE SCHOOL

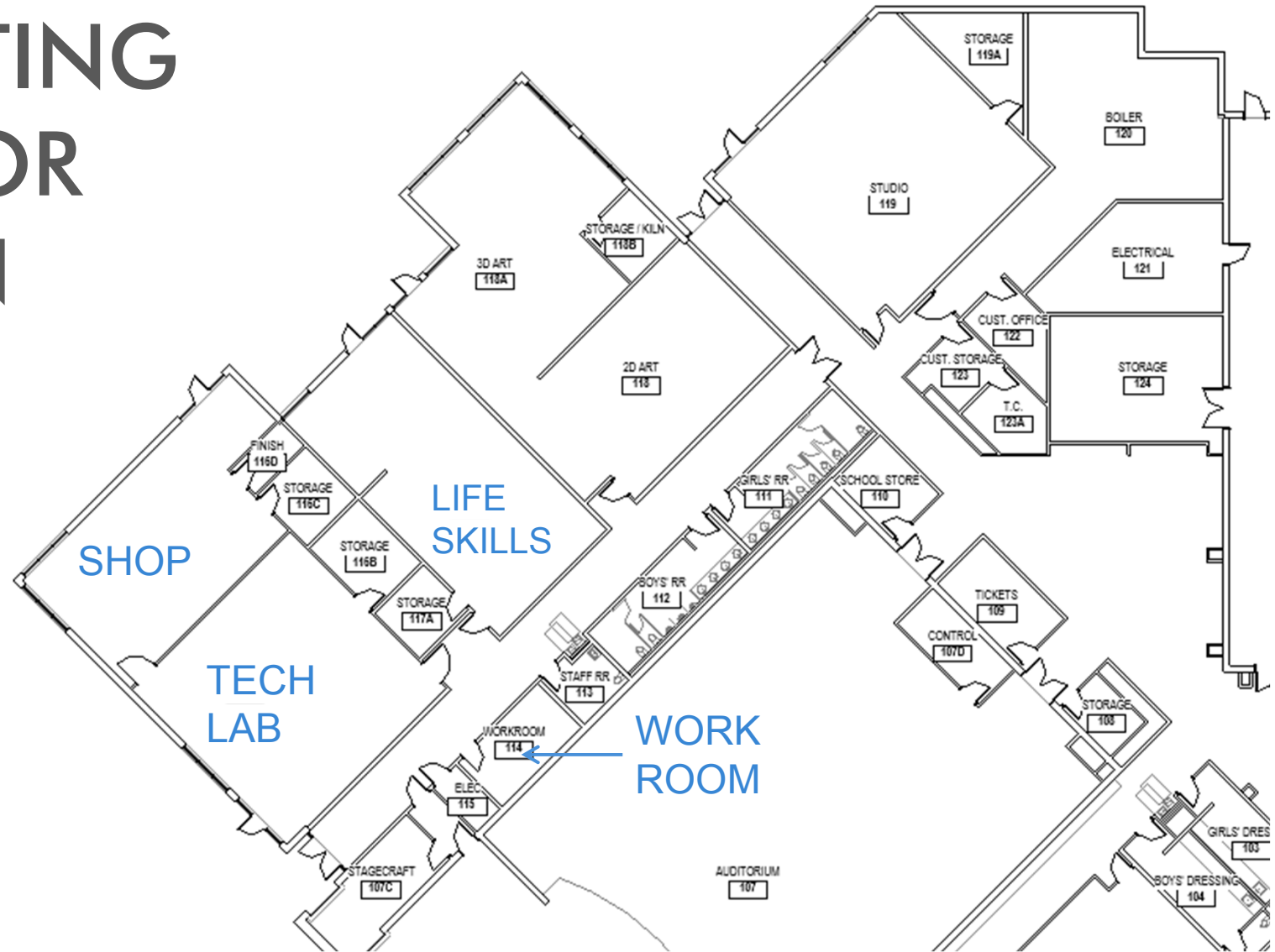
Imagine the Possibilities

PROJECT SCOPE



- HVAC and Electrical Equipment Replacement
 - HVAC Controls Upgrades
 - Roof Work
 - Fire Alarm Upgrades
 - Exterior Maintenance
 - Roof Access Improvements
-
- CTE Renovations
 - CTE Reno Budget- \$350,000

EXISTING FLOOR PLAN



BOULDER VALLEY
SCHOOL DISTRICT

LOUISVILLE MIDDLE SCHOOL

Imagine the Possibilities

EXERCISE – CTE PLANNING



BOULDER VALLEY
SCHOOL DISTRICT

LOUISVILLE MIDDLE SCHOOL

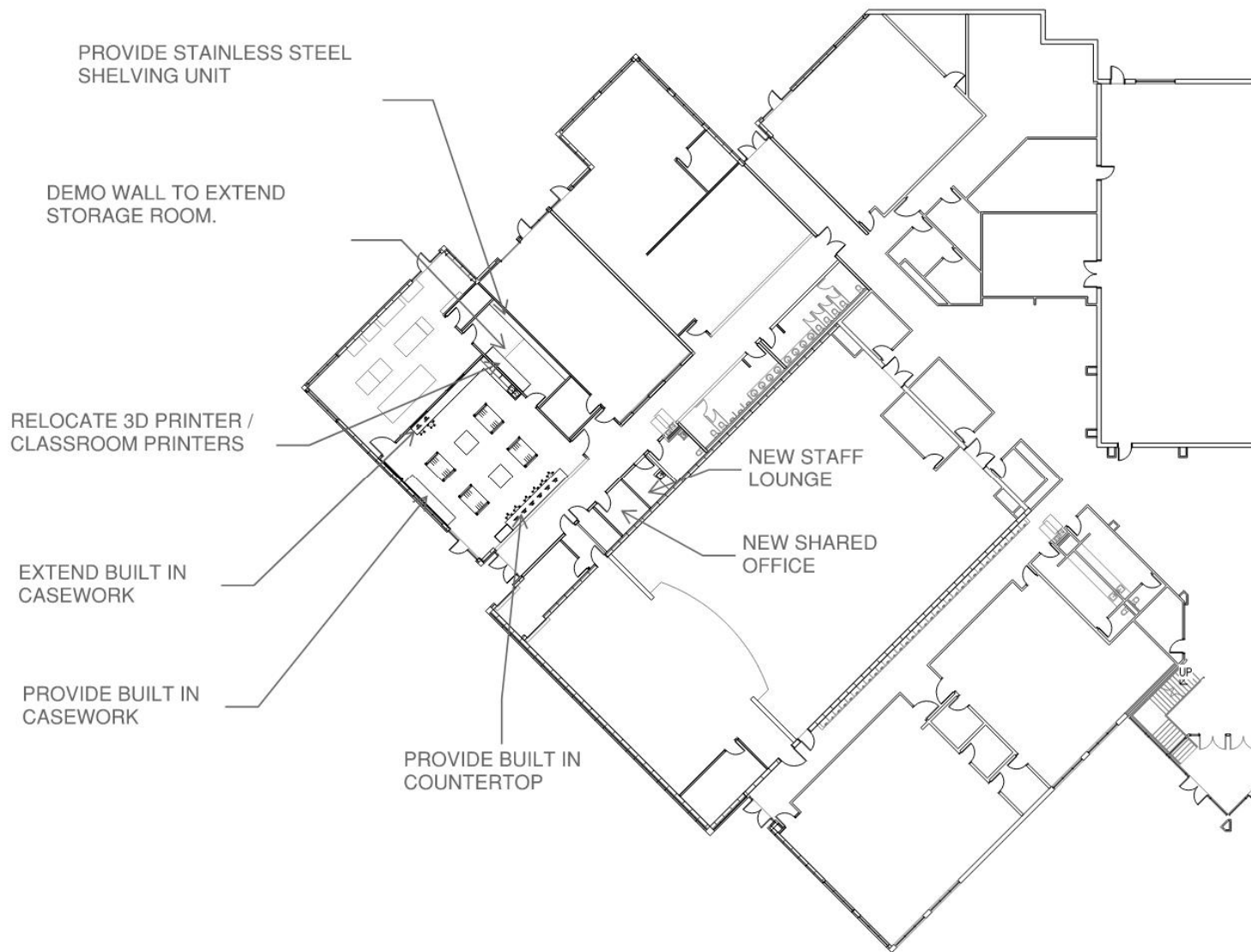
Imagine the Possibilities



BOULDER VALLEY
SCHOOL DISTRICT

LOUISVILLE MIDDLE SCHOOL

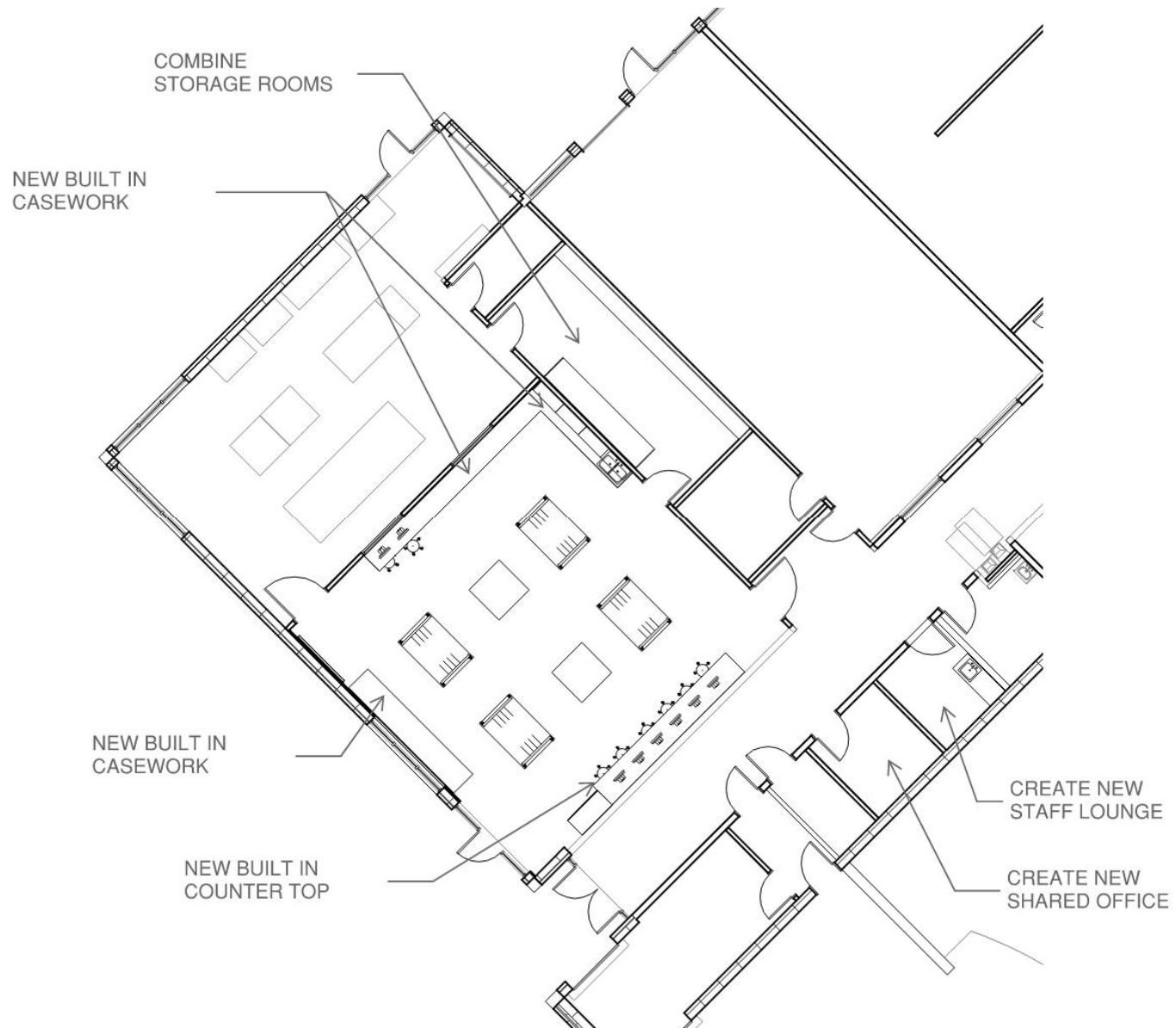
Imagine the Possibilities



BOULDER VALLEY
SCHOOL DISTRICT

LOUISVILLE MIDDLE SCHOOL

Imagine the Possibilities



BOULDER VALLEY
SCHOOL DISTRICT

LOUISVILLE MIDDLE SCHOOL

Imagine the Possibilities

MOCK SLIDE

Casework Elevations



LOUISVILLE MIDDLE SCHOOL

Imagine the Possibilities



4' X 4' TABLE with UNDER STORAGE



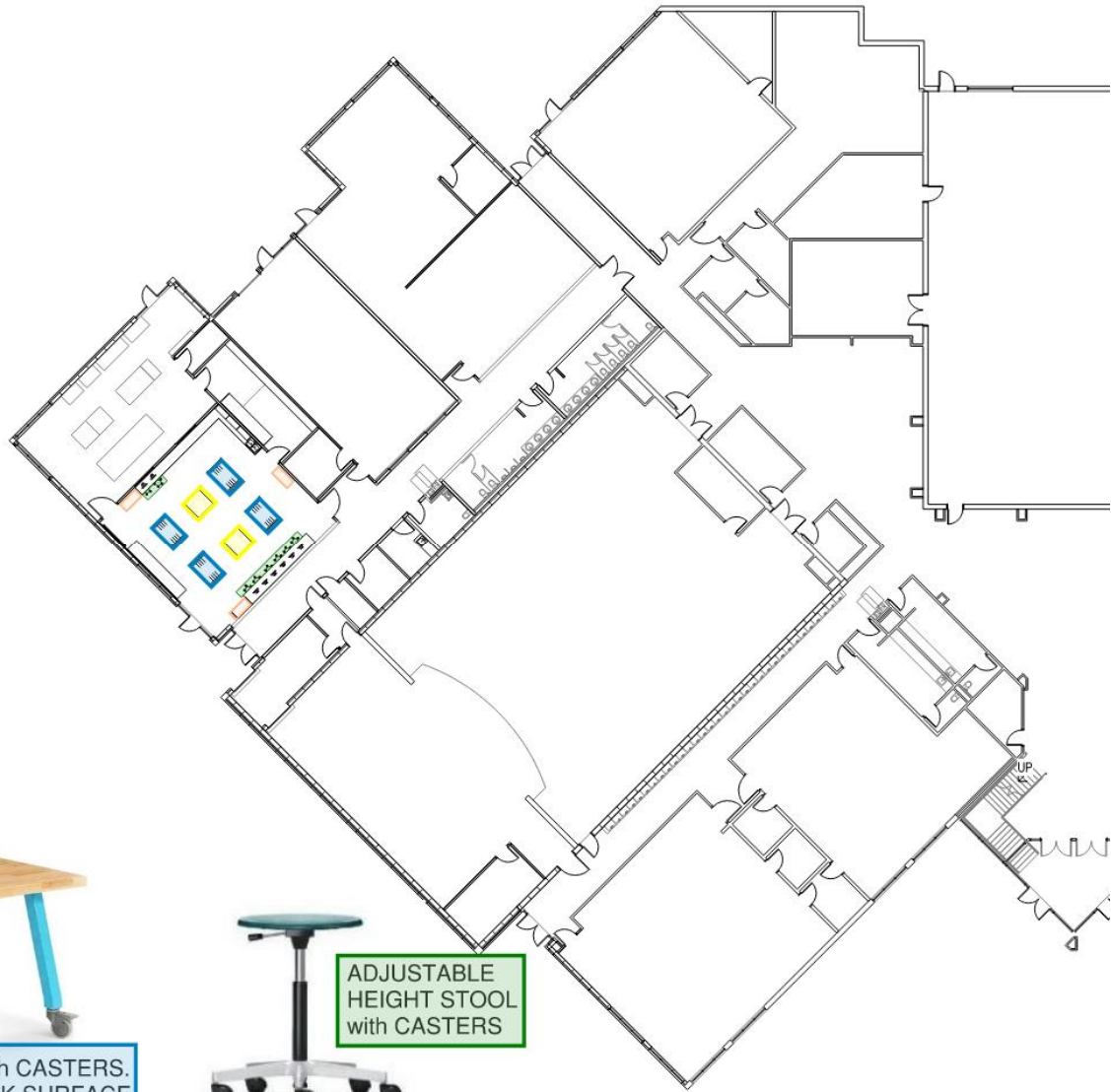
MOVABLE STORAGE UNITS with PEGBOARD SIDES



4' X 6' TABLE with CASTERS. BUTCHER BLOCK SURFACE



ADJUSTABLE HEIGHT STOOL with CASTERS



BOULDER VALLEY
SCHOOL DISTRICT

LOUISVILLE MIDDLE SCHOOL

Imagine the Possibilities



Potential Equipment Replacement

- Floor Standing Drill Press
- Counter Drill Press
- Floor Lathe
- Planer/Jointer
- 9" Bandsaw



BOULDER VALLEY
SCHOOL DISTRICT

LOUISVILLE MIDDLE SCHOOL

Imagine the Possibilities

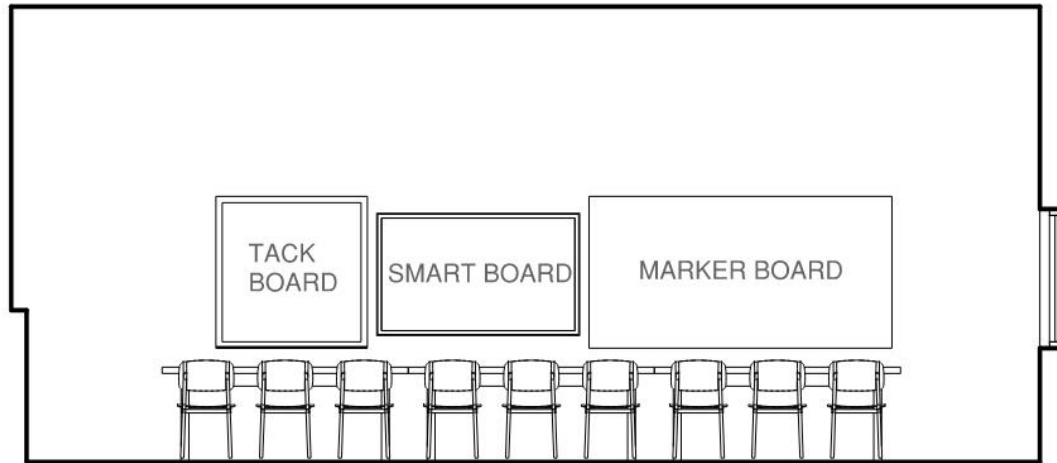
EXERCISE – LIFE SKILLS PLANNING



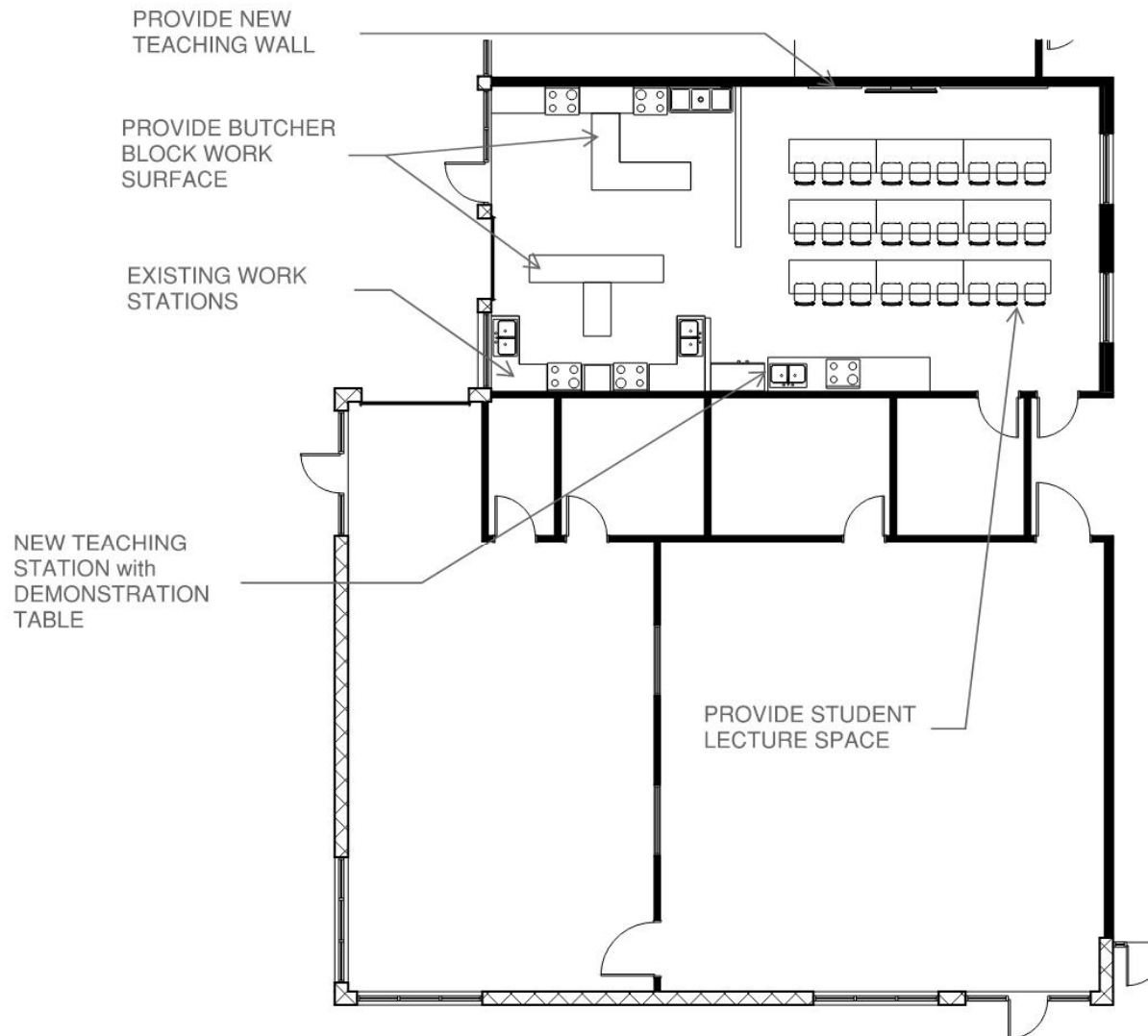
BOULDER VALLEY
SCHOOL DISTRICT

LOUISVILLE MIDDLE SCHOOL

Imagine the Possibilities

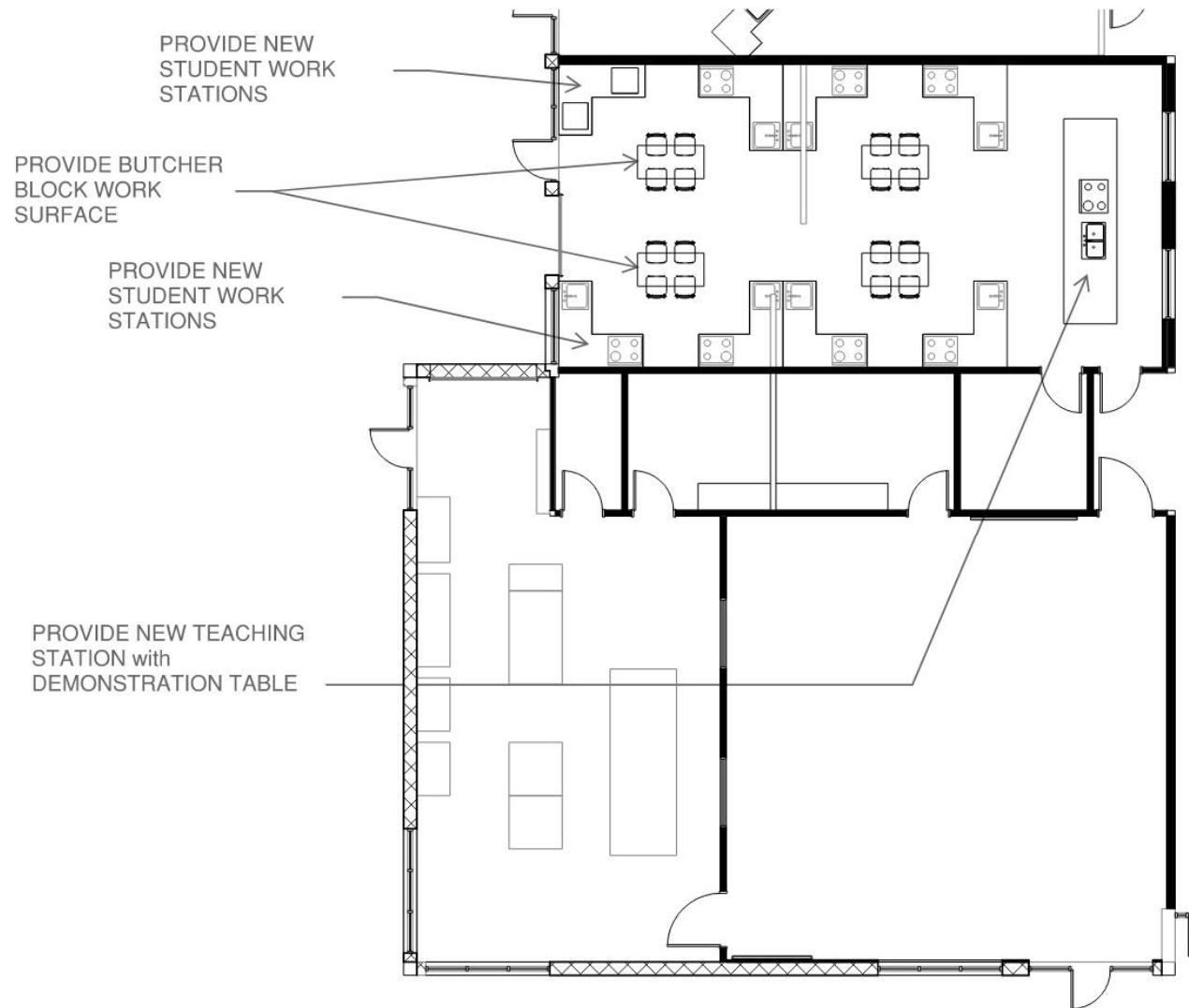


Teaching Wall & Demonstration Table



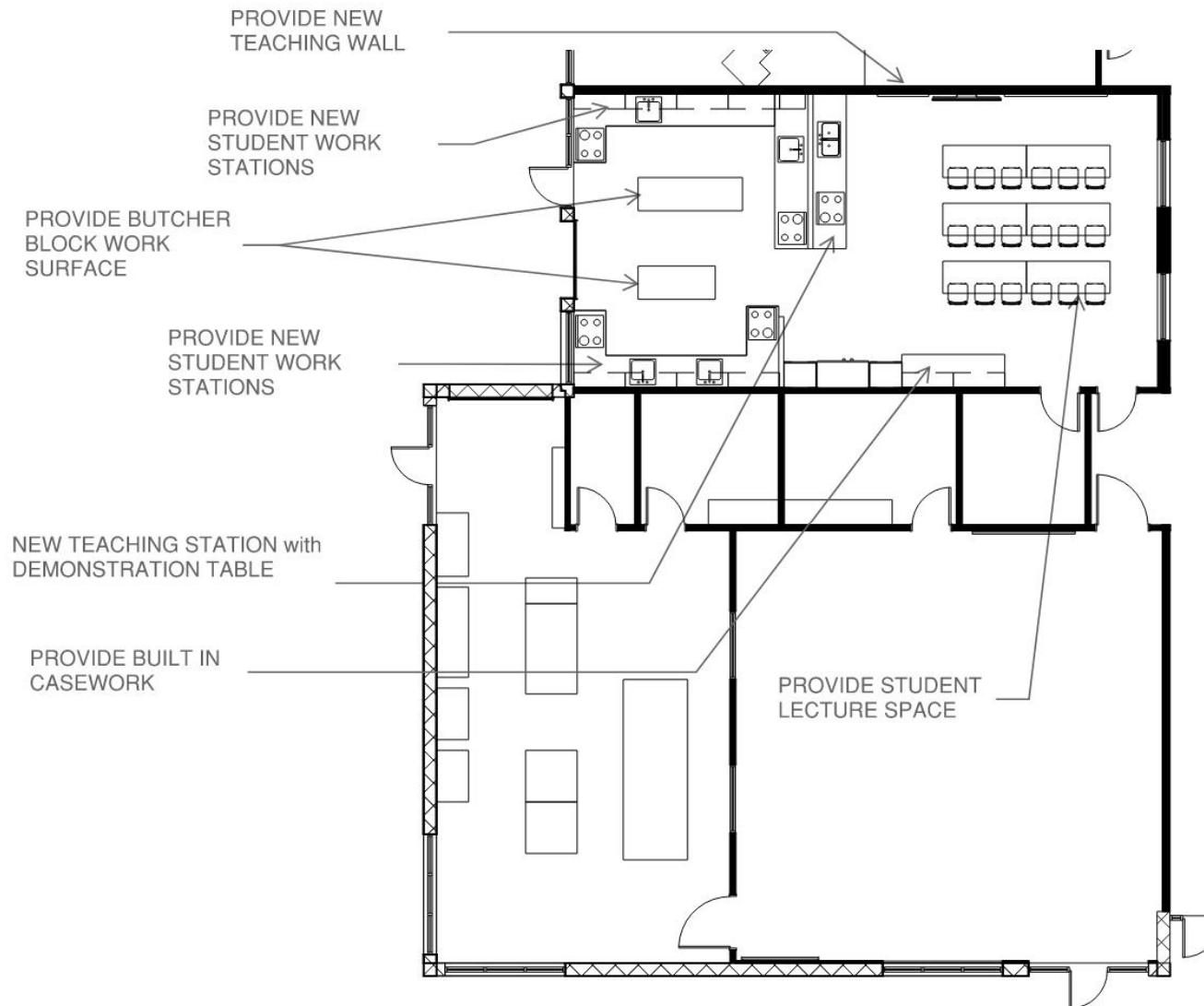
Concept A

LOUISVILLE MIDDLE SCHOOL



Concept B

LOUISVILLE MIDDLE SCHOOL



Concept C

LOUISVILLE MIDDLE SCHOOL



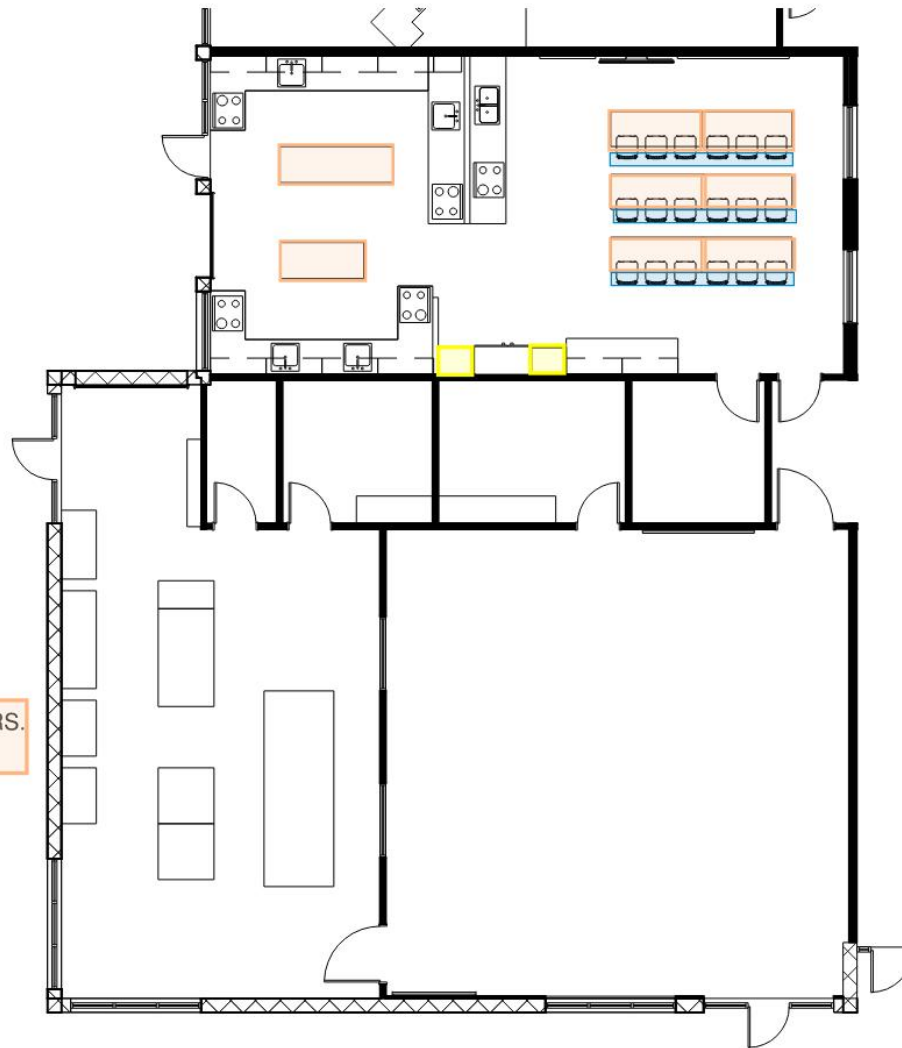
MOVABLE STORAGE UNITS
with REMOVABLE TOTES



30" X 60" TABLE with CASTERS.
BUTCHER BLOCK SURFACE



ADJUSTABLE HEIGHT CHAIR
with CASTERS



Concept C



Potential Equipment Replacement

- 5-6 matching student stations
- Additional Refrigerators



DISCUSSION

LOUISVILLE MIDDLE SCHOOL



BOULDER VALLEY
SCHOOL DISTRICT

Imagine the Possibilities

THANK YOU!



MOA ARCHITECTURE

Next Steps

Complete SD and Pricing Exercise

DAT 3 – TBD, Early Fall



BOULDER VALLEY
SCHOOL DISTRICT

LOUISVILLE MIDDLE SCHOOL

Imagine the Possibilities