



UNDERSTANDING YOUR PSAT/NMSQT RESULTS

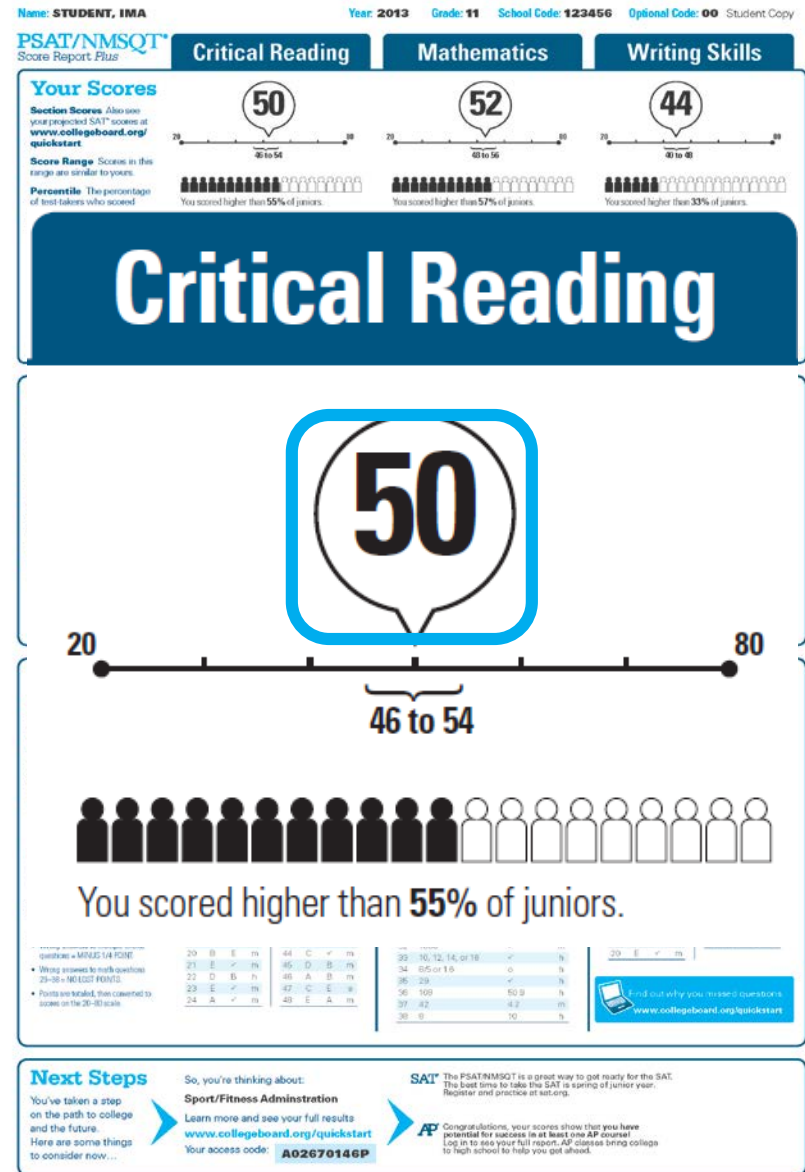
Your Scores

Score

You can see your projected SAT score online in My College QuickStart (www.collegeboard.org/quickstart).

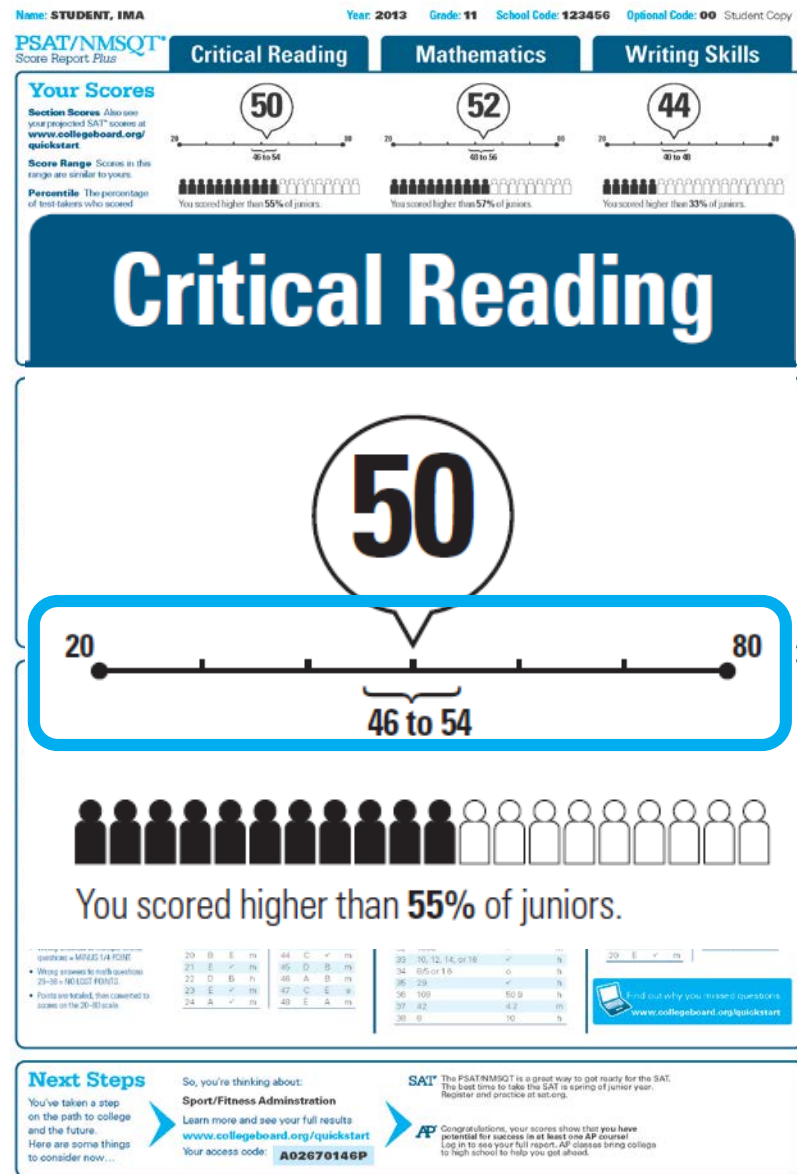
Score

You can see your projected SAT score online in My College QuickStart (www.collegeboard.org/quickstart).



Your Scores (cont.)

Score Range



Your Scores (cont.)

Percentile

If you are a junior, your scores are compared to those of other juniors.

If you are a sophomore or younger student, your scores are compared to those of sophomores.

If you are a sophomore or younger student, your scores are compared to those of sophomores.

National Merit Scholarship Corporation Information

Name: **STUDENT, IMA** Year: **2013** Grade: **11** School Code: **123456** Optional Code: **00** Student Copy

PSAT/NMSQT[®]
Score Report Plus

Critical Reading

Mathematics

Writing Skills

Your Scores

Section Scores Also see your projected SAT[®] scores at www.collegeboard.org/quickstart

Score Range Scores in this range are similar to yours

Percentile The percentage of test-takers who scored at or below your score



National Merit Scholarship Corporation

National Merit Scholarship Corporation (NMSC) uses a Selection Index based on PSAT/NMSQT[®] scores as an initial screen of over 1.5 million students who enter its scholarship programs. (See reverse for more information.)

Your Selection Index

Sum of scores in critical reading, mathematics and writing skills

146

Percentile

Compares your performance with college-bound juniors

47

Entry Requirements

(Information you provided on your answer sheet)

High school student

YES

U.S. citizenship

YES

Year to complete high school and send full resume to college

2015

Years to be spent in grades 9-12

4

Eligibility Information

If your Selection Index places you among the 16,000 high scorers who qualify for program recognition, you will be notified next September

Your Skills

These skill categories can help you understand your score and focus your study efforts before you take the SAT.

To learn more about your skills and receive suggestions for improvement based on your test performance, visit www.collegeboard.org/quickstart and sign in using your code below.

Online Access Code

A02670146P

Determining the Meaning of Words

9 of 15 questions correct (60 percent)

Author's Craft: Style, Tone & Technique

3 of 5 questions correct (60 percent)

Reasoning & Inference

8 of 10 questions correct (80 percent)

Organization & Ideas

2 of 8 questions correct (25 percent)

Understanding Literary Elements

4 of 10 questions correct (40 percent)

Number & Operations

12 of 15 questions correct (80 percent)

Algebra & Functions

3 of 5 questions correct (60 percent)

Geometry & Measurement

8 of 10 questions correct (80 percent)

Data, Statistics & Probability

6 of 8 questions correct (75 percent)

Grammatical Relationships between Words

3 of 12 questions correct (25 percent)

Words & Phrases Used to Modify or Compare

1 of 5 questions correct (20 percent)

Phrases & Clauses

6 of 10 questions correct (60 percent)

Correctly Formed Sentences

1 of 6 questions correct (16 percent)

Relationships of Sentences & Paragraphs

2 of 6 questions correct (33 percent)

Your Answers

See test questions and review explanations of the answers at www.collegeboard.org/quickstart

You can also ask your counselor for a copy of your test book back so you can review the questions.

Key
✓ Correct
○ Omit
✗ Incorrect
✗ Day
✗ Math
✗ Read

Scoring

• Correct answer = PLUS 1 POINT

• Omitted answers = 0 POINTS

• Wrong answers to multiple-choice questions = MINUS 1/4 POINT

• Wrong answers to math questions = 0 POINTS

• Points are totaled, then converted to scores on the 30-38 scale

Question	Correct Answer	Test Answer	Difficulty
1	A	✓	1
2	B	✓	2
3	A	✓	3
4	C	✓	4
5	B	✓	5
6	D	✓	6
7	B	✓	7
8	D	✓	8
9	D	✓	9
10	E	✓	10
11	D	✓	11
12	C	✓	12
13	A	✓	13
14	B	✓	14
15	A	✓	15
16	C	✓	16
17	A	✓	17
18	E	✓	18
19	B	✓	19
20	B	✓	20
21	E	✓	21
22	D	✓	22
23	E	✓	23
24	A	✓	24

Question	Correct Answer	Test Answer	Difficulty
1	D	✓	1
2	E	✓	2
3	E	✓	3
4	C	✓	4
5	B	✓	5
6	B	✓	6
7	C	✓	7
8	A	✓	8
9	B	✓	9
10	C	✓	10
11	B	✓	11
12	C	✓	12
13	B	✓	13
14	D	✓	14
15	D	✓	15
16	E	✓	16
17	A	✓	17
18	B	✓	18
19	C	✓	19
20	E	✓	20

Question	Correct Answer	Test Answer	Difficulty
1	A	✓	1
2	C	✓	2
3	A	✓	3
4	B	✓	4
5	E	✓	5
6	D	✓	6
7	A	✓	7
8	C	✓	8
9	C	✓	9
10	A	✓	10
11	B	✓	11
12	A	✓	12
13	D	✓	13
14	D	✓	14
15	E	✓	15
16	B	✓	16
17	D	✓	17
18	A	✓	18
19	C	✓	19
20	E	✓	20

Next Steps

You've taken a step on the path to college and the future. Here are some things to consider now...

So, you're thinking about:

Sport/Fitness Administration

Learn more and see your full results

www.collegeboard.org/quickstart

Your access code: **A02670146P**

SAT[®] The PSAT/NMSQT is a great way to get ready for the SAT. The best time to take the SAT is spring of junior year. Register and practice at sat.org.

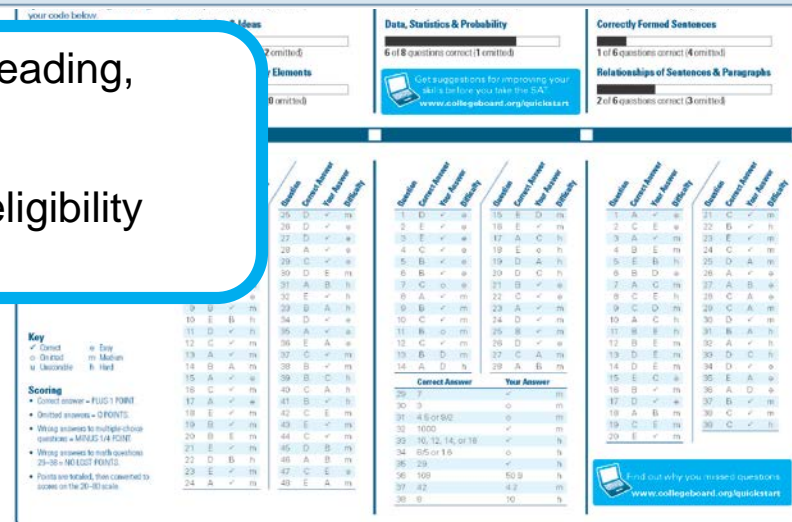


Congratulations, your scores show that you have potential for success in at least one AP course! Log in to see your full report. AP classes bring college to high school to help you get ahead.

Name: **STUDENT, IMA** Year: **2013** Grade: **11** School Code: **123456** Optional Code: **00** Student Copy

PSAT/NMSQT®
Score Report Plus

Critical Reading	Mathematics	Writing Skills
<p>Your Scores</p> <p>Section Scores: Also see your projected SAT scores at www.collegeboard.org/quickstart</p> <p>Score Range: Scores in this range are considered good</p> <p>50</p>	<p>52</p>	<p>44</p>



Log in to see your full report. AP classes bring college to high school to help you get ahead.



National Merit Scholarship Corporation Information (cont.)

National Merit Scholarship Corporation

National Merit Scholarship Corporation (NMSC) uses a Selection Index based on PSAT/NMSQT® scores as an initial screen of over 1.5 million students who enter its scholarship programs. (See reverse for more information.)

Your Selection Index

Sum of scores in critical reading, mathematics and writing skills.

146

Percentile

Compares your performance with college-bound juniors.

47

Entry Requirements

(Information you provided on your answer sheet.)

High school student:

YES

U.S. citizenship:

YES

Year to complete high school and enroll full-time in college:

2014

Years to be spent in grades 9–12:

4

Eligibility Information

If your Selection Index places you among the 55,000 high scorers who qualify for program recognition, you will be notified next September.

Name: **STUDENT, IMA**

Year: **2013** Grade: **11** School Code: **123456** Optional Code: **00** Student Copy

PSAT/NMSQT®
Score Report Plus

Critical Reading

Mathematics

Writing Skills

Your Scores

Section Scores: Also see your projected SAT® scores at www.collegeboard.org/quickstart.

Score Range: Scores in this range are similar to yours.

50

52

44

The Percentile compares your performance to that of other college-bound juniors.

your code below: _____

Organization & Ideas _____

Analysis & Evaluation _____

Supporting Material _____

Elements _____

6 omitted

8 omitted

Data, Statistics & Probability

6 of 8 questions correct (1 omitted)

Get suggestions for improving your score at www.collegeboard.org/quickstart.

Correctly Formed Sentences

1 of 6 questions correct (4 omitted)

Relationships of Sentences & Paragraphs

2 of 6 questions correct (3 omitted)

Get out why you missed questions
www.collegeboard.org/quickstart

Your Answers

See test questions and review explanations of the answers at www.collegeboard.org/quickstart.

You can also ask your counselor for a copy of your test book back so you can review the questions.

Key

✓ Correct
○ Omitted
✗ Incorrect

• Correct answer = PLUS 1 POINT
• Omitted answers = 0 POINTS
• Wrong answers to multiple-choice questions = MINUS 1/4 POINT
• Wrong answers to multiple-choice questions 29–38 = NO LOSS OF POINTS
• Points are totaled, then converted to scores on the 20–40 scale.

Question	Correct Answer	Your Answer	Difficulty
1	A	✓	✓
2	B	✓	✓
3	A	C	✗
4	C	A	✗
5	B	E	✗
6	D	✓	✓
7	B	✓	✓
8	D	✓	✓
9	D	✓	✓
10	E	B	✗
11	D	✓	✓
12	C	✓	✓
13	A	✓	✓
14	B	A	✗
15	A	✓	✓
16	C	✓	✓
17	A	✓	✓
18	E	✓	✓
19	B	✓	✓
20	B	E	✗
21	E	✓	✓
22	D	B	✗
23	E	✓	✓
24	A	✓	✓
25	D	✓	✓
26	D	✓	✓
27	D	✓	✓
28	A	✓	✓
29	B	✓	✓
30	C	✓	✓
31	A	✓	✓
32	E	✓	✓
33	C	✓	✓
34	B	✓	✓
35	D	✓	✓
36	A	✓	✓
37	C	✓	✓
38	B	✓	✓
39	B	✓	✓
40	C	✓	✓
41	B	✓	✓
42	C	✓	✓
43	E	✓	✓
44	A	✓	✓
45	D	✓	✓
46	A	✓	✓
47	C	✓	✓
48	E	✓	✓
49	A	✓	✓
50	B	✓	✓

Question	Correct Answer	Your Answer	Difficulty
1	A	✓	✓
2	C	✓	✓
3	A	✓	✓
4	B	E	✗
5	E	B	✗
6	B	D	✗
7	A	C	✗
8	C	E	✗
9	C	D	✗
10	A	C	✗
11	B	E	✗
12	B	E	✗
13	D	E	✗
14	D	E	✗
15	E	C	✗
16	B	✓	✓
17	D	✓	✓
18	A	✓	✓
19	C	E	✗
20	E	✓	✓

Question	Correct Answer	Your Answer	Difficulty
1	A	✓	✓
2	E	✓	✓
3	A	✓	✓
4	C	✓	✓
5	B	✓	✓
6	B	✓	✓
7	C	✓	✓
8	A	✓	✓
9	B	✓	✓
10	C	✓	✓
11	B	✓	✓
12	C	✓	✓
13	B	✓	✓
14	A	D	✗
15	E	C	✗
16	B	✓	✓
17	D	✓	✓
18	A	✓	✓
19	C	E	✗
20	E	✓	✓

Correct Answer	Your Answer
30: 3	0
31: 4.5 or 5.0	0
32: 10.00	0
33: 10, 12, 14, or 16	0
34: 8.5 or 1.5	0
35: 29	0
36: 109	0
37: 82	0
38: 0	0

Next Steps

You've taken a step on the path to college and the future. Here are some things to consider now...

So, you're thinking about:

Sport/Fitness Administration

Learn more and see your full results at www.collegeboard.org/quickstart

Your access code: **A02670146P**

SAT

The PSAT/NMSQT is a great way to get ready for the SAT.

The best time to take the SAT is spring of junior year.

Register and practice at sat.org.

AP

Congratulations, your scores show that you have potential for success in at least one AP course! Log in to see your full report. AP classes bring college to high school to help you get ahead.

National Merit Scholarship Corporation Information (cont.)

National Merit Scholarship Corporation

National Merit Scholarship Corporation (NMSC) uses a Selection Index based on PSAT/NMSQT® scores as an initial screen of over 1.5 million students who enter its scholarship programs. (See reverse for more information.)

Your Selection Index

Sum of scores in critical reading, mathematics and writing skills.

146

Percentile

Compares your performance with college-bound juniors.

47

Entry Requirements

(Information you provided on your answer sheet.)

High school student:

YES

U.S. citizenship:

YES

Year to complete high school and enroll full-time in college:

2014

Years to be spent in grades 9–12:

4

Eligibility Information

If your Selection Index places you among the 55,000 high scorers who qualify for program recognition, you will be notified next September.

Name: **STUDENT, IMA**

Year: **2013** Grade: **11** School Code: **123456** Optional Code: **00** Student Copy

PSAT/NMSQT®
Score Report Plus

Critical Reading

Mathematics

Writing Skills

Your Scores

Section Scores: Also see your projected SAT® scores at www.collegeboard.org/quickstart

Score Range: Scores in this range are similar to yours

50

52

44

The Entry Requirements section displays information you provided on your answer sheet.

Your code below:

Online Access Code
A02670146P

Organization & Ideas

2 of 8 questions correct (2 omitted)

Data, Statistics & Probability

6 of 8 questions correct (1 omitted)

Correctly Formed Sentences

1 of 6 questions correct (4 omitted)

Relationships of Sentences & Paragraphs

1 of 6 questions correct (5 omitted)

See test questions and review explanations of the answers at www.collegeboard.org/quickstart

You can also ask your counselor for a copy of your test book back so you can review the questions.

Key
✓ Correct
○ Omitted
✗ Incorrect

Scoring

• Correct answer = PLUS 1 POINT

• Omitted answers = 0 POINTS

• Wrong answers to multiple-choice questions = MINUS 1/4 POINT

• Wrong answers to math questions = MINUS 1/4 POINT

• Points are totaled, then converted to scores on the 20–80 scale

1	A	✓	25	D	✓	39	A	✓	53	D	✓
2	B	✓	26	D	✓	40	C	✓	54	E	✓
3	A	✓	27	D	✓	41	B	✓	55	E	✓
4	C	✓	28	A	✓	42	E	✓	56	B	✓
5	B	✓	29	C	✓	43	E	✓	57	B	✓
6	D	✓	30	D	✓	44	C	✓	58	D	✓
7	B	✓	31	A	✓	45	D	✓	59	A	✓
8	D	✓	32	E	✓	46	A	✓	60	B	✓
9	D	✓	33	B	✓	47	C	✓	61	E	✓
10	E	✓	34	D	✓	48	E	✓	62	A	✓
11	C	✓	35	A	✓	49	E	✓	63	B	✓
12	C	✓	36	E	✓	50	A	✓	64	C	✓
13	A	✓	37	C	✓	51	D	✓	65	D	✓
14	B	✓	38	B	✓	52	C	✓	66	E	✓
15	A	✓	39	B	✓	53	D	✓	67	A	✓
16	C	✓	40	C	✓	54	E	✓	68	B	✓
17	A	✓	41	B	✓	55	E	✓	69	C	✓
18	E	✓	42	C	✓	56	B	✓	70	D	✓
19	B	✓	43	E	✓	57	A	✓	71	E	✓
20	B	✓	44	C	✓	58	D	✓	72	A	✓
21	E	✓	45	D	✓	59	A	✓	73	B	✓
22	D	✓	46	A	✓	60	B	✓	74	C	✓
23	E	✓	47	C	✓	61	E	✓	75	D	✓
24	A	✓	48	E	✓	62	A	✓	76	E	✓

1	D	✓	15	E	✓	29	D	✓	43	E	✓
2	E	✓	16	E	✓	30	D	✓	44	C	✓
3	E	✓	17	A	✓	31	A	✓	45	D	✓
4	C	✓	18	E	✓	32	E	✓	46	A	✓
5	B	✓	19	D	✓	33	B	✓	47	C	✓
6	B	✓	20	D	✓	34	D	✓	48	E	✓
7	C	✓	21	B	✓	35	A	✓	49	E	✓
8	A	✓	22	C	✓	36	E	✓	50	A	✓
9	B	✓	23	A	✓	37	C	✓	51	D	✓
10	C	✓	24	D	✓	38	B	✓	52	C	✓
11	B	✓	25	B	✓	39	B	✓	53	D	✓
12	C	✓	26	E	✓	40	C	✓	54	E	✓
13	B	✓	27	C	✓	41	B	✓	55	E	✓
14	A	✓	28	A	✓	42	E	✓	56	B	✓

1	D	✓	15	E	✓	29	D	✓	43	E	✓
2	E	✓	16	E	✓	30	D	✓	44	C	✓
3	E	✓	17	A	✓	31	A	✓	45	D	✓
4	C	✓	18	E	✓	32	E	✓	46	A	✓
5	B	✓	19	D	✓	33	B	✓	47	C	✓
6	B	✓	20	D	✓	34	D	✓	48	E	✓
7	C	✓	21	B	✓	35	A	✓	49	E	✓
8	A	✓	22	C	✓	36	E	✓	50	A	✓
9	B	✓	23	A	✓	37	C	✓	51	D	✓
10	C	✓	24	D	✓	38	B	✓	52	C	✓
11	B	✓	25	B	✓	39	B	✓	53	D	✓
12	C	✓	26	E	✓	40	C	✓	54	E	✓
13	B	✓	27	C	✓	41	B	✓	55	E	✓
14	A	✓	28	A	✓	42	E	✓	56	B	✓

1	A	✓	21	C	✓	37	B	✓	53	D	✓
2	C	✓	22	B	✓	38	A	✓	54	E	✓
3	A	✓	23	E	✓	39	B	✓	55	E	✓
4	B	✓	24	C	✓	40	C	✓	56	B	✓
5	E	✓	25	D	✓	41	B	✓	57	A	✓
6	B	✓	26	A	✓	42	E	✓	58	D	✓
7	A	✓	27	A	✓	43	E	✓	59	A	✓
8	C	✓	28	C	✓	44	C	✓	60	B	✓
9	C	✓	29	A	✓	45	D	✓	61	E	✓
10	A	✓	30	D	✓	46	A	✓	62	A	✓
11	B	✓	31	B	✓	47	C	✓	63	B	✓
12	B	✓	32	A	✓	48	E	✓	64	C	✓
13	D	✓	33	D	✓	49	E	✓	65	D	✓
14	E	✓	34	D	✓	50	A	✓	66	E	✓
15	E	✓	35	E	✓	51	D	✓	67	A	✓
16	B	✓	36	A	✓	52	C	✓	68	B	✓
17	D	✓	37	B	✓	53	D	✓	69	C	✓
18	A	✓	38	A	✓	54	E	✓	70	D	✓
19	C	✓	39	B	✓	55	E	✓	71	E	✓
20	E	✓	40	C	✓	56	B	✓	72	A	✓

Next Steps

You've taken a step on the path to college and the future. Here are some things to consider now...

So, you're thinking about:

Sport/Fitness Administration

Learn more and see your full results
www.collegeboard.org/quickstart

Your access code: **A02670146P**

SAT The PSAT/NMSQT is a great way to get ready for the SAT. The best time to take the SAT is spring of junior year. Register and practice at sat.org.



Congratulations, your scores show that you have potential for success in at least one AP course! Log in to see your full report. AP classes bring college to high school to help you get ahead.

Your Skills

Name: **STUDENT, IMA**

Year: **2013** Grade: **11** School Code: **123456** Optional Code: **00** Student Copy

PSAT/NMSQT[®]
Score Report Plus

Critical Reading

Mathematics

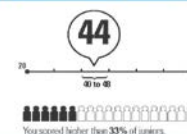
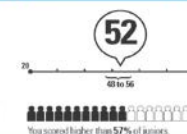
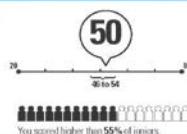
Writing Skills

Your Scores

Section Scores Also see your projected SAT[®] scores at www.collegeboard.org/quickstart

Score Range Scores in this range are similar to yours

Percentile The percentage of test takers who scored below your score



National Merit Scholarship Corporation

National Merit Scholarship Corporation (NMSC) uses a Selection Index based on PSAT/NMSQT[®] scores as an initial screen of over 1.5 million students who enter its scholarship programs. (See reverse for more information.)

Entry Requirements (Information you provided on your answer sheet)

High school student: **YES**
U.S. citizenship: **YES**
Year to complete high school and send full form to college: **2015**
Years to be spent in grades 9-12: **4**

Eligibility Information

If your Selection Index places you among the 15,000 high scorers who qualify for program recognition, you will be notified next September.

Your Skills

These skill categories can help you understand your score and focus your study efforts before you take the SAT.

To learn more about your skills and receive suggestions for improvement based on your test performance, visit www.collegeboard.org/quickstart and sign in using your code below.

Online Access Code
A02670146P

Determining the Meaning of Words

9 of 15 questions correct (6 omitted)

Author's Craft: Style, Tone & Technique

3 of 5 questions correct (0 omitted)

Reasoning & Inference

8 of 10 questions correct (2 omitted)

Organization & Ideas

2 of 8 questions correct (2 omitted)

Understanding Literary Elements

4 of 10 questions correct (0 omitted)

Number & Operations

12 of 15 questions correct (3 omitted)

Algebra & Functions

3 of 5 questions correct (0 omitted)

Geometry & Measurement

8 of 10 questions correct (2 omitted)

Data, Statistics & Probability

6 of 8 questions correct (1 omitted)

Get suggestions for improving your skills before you take the SAT.
www.collegeboard.org/quickstart

Grammatical Relationships between Words

3 of 12 questions correct (0 omitted)

Words & Phrases Used to Modify or Compare

1 of 5 questions correct (2 omitted)

Phrases & Clauses

6 of 10 questions correct (2 omitted)

Correctly Formed Sentences

1 of 6 questions correct (4 omitted)

Relationships of Sentences & Paragraphs

2 of 6 questions correct (3 omitted)

Your Answers

See test questions and review explanations of the answers at www.collegeboard.org/quickstart

You can also ask your counselor for a copy of your test book back so you can review the questions.

Key
✓ Correct
○ Omitted
✗ Incorrect
✗ Incorrect

Scoring
• Correct answer = PLUS 1 POINT
• Omitted answers = 0 POINTS
• Wrong answers to multiple-choice questions = MINUS 1/4 POINT
• Wrong answers to math questions = 0 POINTS
• Points are totaled, then converted to scores on the 20-40 scale

Question	Correct Answer	Test Score	Difficulty
1	A	✓	✗
2	B	✓	✗
3	A	✓	✗
4	C	✗	✗
5	B	✓	✗
6	D	✓	✗
7	B	✓	✗
8	D	✗	✗
9	D	✗	✗
10	E	✗	✗
11	D	✓	✗
12	C	✓	✗
13	A	✓	✗
14	B	✗	✗
15	A	✓	✗
16	C	✗	✗
17	A	✓	✗
18	E	✓	✗
19	B	✓	✗
20	B	✗	✗
21	E	✓	✗
22	D	✗	✗
23	E	✓	✗
24	A	✓	✗

Question	Correct Answer	Test Score	Difficulty
1	D	✓	✗
2	E	✓	✗
3	E	✓	✗
4	C	✓	✗
5	B	✓	✗
6	B	✓	✗
7	C	✗	✗
8	A	✓	✗
9	B	✓	✗
10	C	✓	✗
11	B	✗	✗
12	C	✓	✗
13	B	✗	✗
14	D	✗	✗
15	D	✗	✗
16	E	✗	✗
17	A	✓	✗
18	C	✗	✗
19	C	✗	✗
20	E	✓	✗

Question	Correct Answer	Test Score	Difficulty
1	A	✓	✗
2	C	✗	✗
3	A	✓	✗
4	B	✗	✗
5	E	✗	✗
6	D	✗	✗
7	A	✓	✗
8	C	✗	✗
9	C	✗	✗
10	A	✓	✗
11	B	✗	✗
12	B	✗	✗
13	D	✗	✗
14	D	✗	✗
15	E	✗	✗
16	B	✗	✗
17	D	✓	✗
18	B	✗	✗
19	C	✗	✗
20	E	✓	✗

Next Steps

You've taken a step on the path to college and the future. Here are some things to consider now...

So, you're thinking about:

Sport/Fitness Administration

Learn more and see your full results at www.collegeboard.org/quickstart

Your access code: **A02670146P**

SAT[®] The PSAT/NMSQT is a great way to get ready for the SAT. The best time to take the SAT is spring of junior year. Register and practice at sat.org.

AP[®] Congratulations, your scores show that you have potential for success in at least one AP course! Log in to see your full report. AP classes bring college to high school to help you get ahead.

Your Skills (cont.)

Name: STUDENT, IMA

Year: 2013 Grade: 11 School Code: 123456 Optional Code: 00 Student Copy

PSAT/NMSQT[®]
Score Report Plus

Critical Reading

Mathematics

Writing Skills

Your Scores

Section Scores Also see
your projected SAT scores at

50

52

44

Your Skills

These skill categories can help you understand your score and focus your study efforts before you take the SAT.

To learn more about your skills and review suggestions for improvement based on your test performance, visit www.collegeboard.org/quickstart and sign in using your code below.

Online Access Code

A02670146P

Determining the Meaning of Words

9 of 15 questions correct (0 omitted)

Author's Craft: Style, Tone & Technique

3 of 5 questions correct (0 omitted)

Reasoning & Inference

8 of 10 questions correct (2 omitted)

Organization & Ideas

2 of 8 questions correct (2 omitted)

Understanding Literary Elements

4 of 10 questions correct (0 omitted)

Number & Operations

12 of 15 questions correct (1 omitted)

Algebra & Functions

5 of 5 questions correct (0 omitted)

Geometry & Measurement

8 of 10 questions correct (2 omitted)

Data, Statistics & Probability

6 of 8 questions correct (1 omitted)



Get suggestions for improving your skills before you take the SAT.
www.collegeboard.org/quickstart

Grammatical Relationships between Words

3 of 12 questions correct (1 omitted)

Words & Phrases Used to Modify or Compare

1 of 5 questions correct (2 omitted)

Phrases & Clauses

6 of 10 questions correct (2 omitted)

Correctly Formed Sentences

1 of 6 questions correct (4 omitted)

Relationships of Sentences & Paragraphs

2 of 6 questions correct (3 omitted)

See how you did on each skill. The same skills are tested on the SAT.

You can try hundreds of practice questions, organized by skill, online in My College QuickStart (www.collegeboard.org/quickstart).

Next Steps

You've taken a step on the path to college and the future. Here are some things to consider now...

So, you're thinking about:

Sport/Fitness Administration

Learn more and see your full results
www.collegeboard.org/quickstart

Your access code: **A02670146P**

SAT The PSAT/NMSQT is a great way to get ready for the SAT. The best time to take the SAT is spring of junior year. Register and practice at sat.org.

AP Congratulations, your scores show that you have potential for success in at least one AP course! Log in to see your full report. AP classes bring college to high school to help you get ahead.

Your Answers

Name: **STUDENT, IMA**

Year: **2013** Grade: **11** School Code: **123456** Optional Code: **00** Student Copy

PSAT/NMSQT[™]
Score Report Plus

Critical Reading

Mathematics

Writing Skills

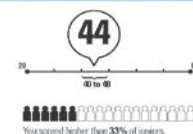
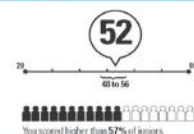
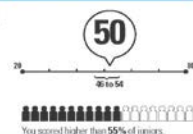
Your Scores

Section Scores Also see your projected SAT[®] scores at www.collegeboard.org/quickstart

Score Range Scores in this range are similar to yours

Percentile The percentage of test takers who scored below your score

National Merit Scholarship Corporation
The National Merit Scholarship Corporation (NMSC) uses PSAT/NMSQT scores as an initial screen of over 1.5 million students who enter its scholarship programs. (See reverse for more information.)



Entry Requirements
(Information you provided on your answer sheet.)
High school student: **YES**
U.S. citizenship: **YES**
Year to complete high school and send full score to college: **2015**
Years to be spent in grades 9-12: **4**

Eligibility Information
If your Selection Index places you among the 16,000 high scorers who qualify for program recognition, you will be notified next September.

Your Skills

These skill categories can help you understand your score and focus your study efforts before you take the SAT.

To learn more about your skills and receive suggestions for improvement based on your test performance, visit www.collegeboard.org/quickstart and sign in using your code below.

Online Access Code
A02670146P

Determining the Meaning of Words

9 of 15 questions correct (60%)

Author's Craft: Style, Tone & Technique

3 of 5 questions correct (60%)

Reasoning & Inference

8 of 10 questions correct (80%)

Organization & Ideas

2 of 8 questions correct (25%)

Understanding Literary Elements

4 of 10 questions correct (40%)

Number & Operations

12 of 15 questions correct (80%)

Algebra & Functions

3 of 5 questions correct (60%)

Geometry & Measurement

8 of 10 questions correct (80%)

Data, Statistics & Probability

6 of 8 questions correct (75%)

Get suggestions for improving your SAT score at www.collegeboard.org/quickstart

Grammatical Relationships between Words

3 of 12 questions correct (25%)

Words & Phrases Used to Modify or Compare

1 of 5 questions correct (20%)

Phrases & Clauses

6 of 10 questions correct (60%)

Correctly Formed Sentences

1 of 6 questions correct (17%)

Relationships of Sentences & Paragraphs

2 of 6 questions correct (33%)

Your Answers

See test questions and review explanations of the answers at www.collegeboard.org/quickstart

You can also ask your counselor for a copy of your test book back so you can review the questions.

Key
✓ Correct
○ Omit
✗ Incorrect
✗ Day
✗ Math
✗ Test

Scoring

• Correct answer = PLUS 1 POINT
• Omitted answer = 0 POINTS
• Wrong answer to multiple-choice question = MINUS 1/4 POINT
• Wrong answer to math question = 0 POINTS
• Points are totaled, then converted to scores on the 20-40 scale

Question	Correct Answer	Test Score	Difficulty
1	A	✓	1
2	B	✓	2
3	A	✓	3
4	C	✓	4
5	B	✓	5
6	D	✓	6
7	B	✓	7
8	D	✓	8
9	D	✓	9
10	E	✓	10
11	D	✓	11
12	C	✓	12
13	A	✓	13
14	B	✓	14
15	A	✓	15
16	C	✓	16
17	A	✓	17
18	E	✓	18
19	B	✓	19
20	B	✓	20
21	E	✓	21
22	D	✓	22
23	E	✓	23
24	A	✓	24

Question	Correct Answer	Test Score	Difficulty
1	D	✓	1
2	E	✓	2
3	E	✓	3
4	C	✓	4
5	B	✓	5
6	B	✓	6
7	C	✓	7
8	A	✓	8
9	B	✓	9
10	C	✓	10
11	B	✓	11
12	C	✓	12
13	B	✓	13
14	D	✓	14
15	D	✓	15
16	C	✓	16
17	D	✓	17
18	A	✓	18
19	C	✓	19
20	E	✓	20

Question	Correct Answer	Test Score	Difficulty
1	A	✓	1
2	C	✓	2
3	A	✓	3
4	B	✓	4
5	E	✓	5
6	D	✓	6
7	A	✓	7
8	C	✓	8
9	C	✓	9
10	A	✓	10
11	B	✓	11
12	B	✓	12
13	D	✓	13
14	D	✓	14
15	E	✓	15
16	B	✓	16
17	D	✓	17
18	A	✓	18
19	C	✓	19
20	E	✓	20

Next Steps

You've taken a step on the path to college and the future. Here are some things to consider now...

So, you're thinking about:

Sport/Fitness Administration

Learn more and see your full results at www.collegeboard.org/quickstart

Your access code: **A02670146P**

SAT[®] The PSAT/NMSQT is a great way to get ready for the SAT. The best time to take the SAT is spring of junior year. Register and practice at sat.org.

AP[®] Congratulations, your scores show that you have potential for success in at least one AP course! Log in to see your full report. AP classes bring college to high school to help you get ahead.

You will get your test book back with your PSAT/NMSQT results, so that you can review the questions.

Name: STUDENT, IMA

Year: 2013 Grade: 11 School: 1234567890 Optional Question: 00 Student ID: 00000000000000000000

PSAT/NMSQT[®]
Score Report Plus

Critical Reading

Mathematics

Writing Skills

Your Score

Section Scores
your projected SAT
www.collegeboard
quickstart

Score Range 1
range is similar

Percentile The
of test takers who
below your score

National Merit
Corporate Body
a selection index
PSAT/NMSQT
as an initial score
15 million students
its achievement
prize for more

Your Score

These skill categories
you understand
focus your study
you take the SAT

To learn more
and review target
improvement
test performance
www.collegeboard
quickstart and
your score below

Online Access

A026701

Your Answer

See test question
explanations of
www.collegeboard
quickstart

You can also ask
counselor for a
test book back or
review the questions

Key

Correct
Incorrect
Uncertain

Scoring

- Correct answer = 1 point
- Incorrect answer = 0 points
- Wrong answer to question = MINUS 1 point
- Wrong answer to question = MINUS 1 point
- Points are totaled, 15 points on the 20-item

Next Steps

You've taken
on the path to
and the future.
Here are some
to consider now

Question	Correct Answer	Your Answer	Difficulty
1	A	✓ e	
2	B	✓ e	
3	A	C m	
4	C	A h	
5	B	E h	
6	D	✓ e	
7	B	✓ m	
8	D	o e	
9	B	✓ m	
10	E	B h	
11	D	✓ h	
12	C	✓ m	
13	A	✓ m	
14	B	A m	
15	A	✓ e	
16	C	✓ m	
17	A	✓ e	
18	E	✓ m	
19	B	✓ m	
20	B	E m	
21	E	✓ m	
22	D	B h	
23	E	✓ m	
24	A	✓ m	

See your score on your answer sheet

U.S. citizen ship

YES

in school and
high

grades 9-12

Eligibility Information

If your Section Index places you among the 65,000 high scorers nationally for high-achieving, responsible, you will be notified next September

Number & Operations

12 of 15 questions correct (8 omitted)

Algebra & Functions

3 of 5 questions correct (2 omitted)

Geometry & Measurement

4 of 10 questions correct (1 omitted)

Data, Statistics & Probability

4 of 8 questions correct (1 omitted)

Get suggestions for improving your
skill before you take the SAT.
www.collegeboard.org/quickstart

Grammatical Relationships between Words

3 of 12 questions correct (2 omitted)

Words & Phrases Used to Modify or Compare

1 of 5 questions correct (2 omitted)

Phrases & Clauses

4 of 10 questions correct (2 omitted)

Correctly Formed Sentences

1 of 6 questions correct (4 omitted)

Relationships of Sentences & Paragraphs

2 of 6 questions correct (3 omitted)

Question	Correct Answer	Your Answer	Difficulty	Question	Correct Answer	Your Answer	Difficulty	Question	Correct Answer	Your Answer	Difficulty
1	D	✓ e		16	E	D m		31	A	✓ m	
2	E	✓ m		17	E	✓ m		32	C	✓ m	
3	A	✓ m		18	A	✓ m		33	E	✓ m	
4	C	✓ m		19	E	✓ m		34	B	✓ m	
5	B	✓ m		20	D	✓ m		35	E	✓ m	
6	D	✓ m		21	C	✓ m		36	A	✓ m	
7	C	✓ m		22	A	✓ m		37	A	✓ m	
8	C	✓ m		23	A	✓ m		38	C	✓ m	
9	C	✓ m		24	A	✓ m		39	D	✓ m	
10	C	✓ m		25	B	✓ m		40	C	✓ m	

Your Answers (cont.)

You will get your test book back with your PSAT/NMSQT results, so that you can review the questions.

You can also review each test question in My College QuickStart.

Name: **STUDENT, IMA** Year: **2013** Grade: **11** School Code: **123456** Optional Code: **00** Student Copy

PSAT/NMSQT[®] Score Report Plus

Critical Reading **Mathematics** **Writing Skills**

Your Scores
 Section Scores: your projected SAT score is shown. Visit www.collegeboard.org/psatnmsqt for more information.
 Score Range: 10-38
 Percentile: The percent of test takers who scored at or below your score is shown.

52 **44**

You scored higher than 52% of peers.
 You scored higher than 33% of peers.

Eligibility Information
 If your Section Index places you among the 15,000 high-scoring students who qualify for program recognition, you will be notified next September.

Number & Operations
 12 of 19 questions correct (63%)
Algebra & Functions
 3 of 5 questions correct (60%)
Geometry & Measurement
 8 of 10 questions correct (80%)
Data, Statistics & Probability
 6 of 8 questions correct (75%)

Grammatical Relationships between Words
 3 of 12 questions correct (25%)
Words & Phrases Used to Modify or Compare
 1 of 5 questions correct (20%)
Phrases & Clauses
 6 of 10 questions correct (60%)
Correctly Formed Sentences
 1 of 6 questions correct (17%)
Relationships of Sentences & Paragraphs
 2 of 6 questions correct (33%)

Get suggestions for improving your score at www.collegeboard.org/psatnmsqt.

Key
 ✓ Correct
 ○ Incorrect
 ✗ Unanswered

Scoring
 • Correct answer = 1 point
 • Incorrect answer = 0 points
 • Wrong answer to a multiple-choice question = 0 points
 • Points are halved for wrong answers on the 28-36 questions.

Next Steps
 You've taken a big step toward college. Here are some things to consider now.

Question	Correct Answer	Your Answer	Difficulty
1	A	✓	e
2	B	✓	e
3	A	C	m
4	C	A	h
5	B	E	h
6	D	✓	e
7	B	✓	m
8	D	o	e
9	B	✓	m
10	E	B	h
11	D	✓	h
12	C	✓	m
13	A	✓	m
14	B	A	m
15	A	✓	e
16	C	✓	m
17	A	✓	e
18	E	✓	m
19	B	✓	m
20	B	E	m
21	E	✓	m
22	D	B	h
23	E	✓	m
24	A	✓	m

Correct Answer **Your Answer**

30 3
 31 4.5 or 90
 32 100
 33 10, 12, 14, or 18
 34 8.5 or 1.5
 35 29
 36 109
 37 82
 38 0

15 8 or 16
 16 8 or 16
 17 8 or 16
 18 8 or 16
 19 8 or 16
 20 8 or 16
 21 8 or 16
 22 8 or 16
 23 8 or 16
 24 8 or 16

21 8 or 16
 22 8 or 16
 23 8 or 16
 24 8 or 16

25 8 or 16
 26 8 or 16
 27 8 or 16
 28 8 or 16
 29 8 or 16
 30 8 or 16
 31 8 or 16
 32 8 or 16
 33 8 or 16
 34 8 or 16
 35 8 or 16
 36 8 or 16
 37 8 or 16
 38 8 or 16

Find out why you missed questions at www.collegeboard.org/psatnmsqt.

SAT[®] The PSAT/NMSQT is a great way to get ready for the SAT. The best time to take the SAT is spring of junior year. Register and practice at sat.org.

AP[®] Congratulations, your scores show that you have potential for success in at least one AP course! Log in to see your full report. AP classes bring college to high school to help you get ahead.

Your Answers (cont.)

You will get your test book back with your PSAT/NMSQT results, so that you can review the questions.

You can also review each test question in My College QuickStart.

Name: **STUDENT, IMA** Year: **2013** Grade: **11** School Code: **123456** Optional Code: **00** Student Copy

PSAT/NMSQT[®] Score Report Plus

Critical Reading

Your Scores
Your projected SAT score is **52**.
www.collegeboard.org/psatnmsqt

Score Range
The range of scores for students who scored higher than 52% of test takers is 40 to 56.

Percentile
The range of scores for students who scored higher than 52% of test takers is 40 to 56.

Section Scores
Your scores for each section are shown below. The scores for each section are based on the number of questions you answered correctly.

Question	Correct Answer	Your Answer	Difficulty
1	A	✓	e
2	B	✓	e
3	A	C	m
4	C	A	h
5	B	E	h
6	D	✓	e
7	B	✓	m
8	D	o	e
9	B	✓	m
10	E	B	h
11	D	✓	h
12	C	✓	m
13	A	✓	m
14	B	A	m
15	A	✓	e
16	C	✓	m
17	A	✓	e
18	E	✓	m
19	B	✓	m
20	B	E	m
21	E	✓	m
22	D	B	h
23	E	✓	m
24	A	✓	m

Key
✓ Correct
o Incorrect
u Unanswered

Scoring
• Correct answer = 1 point
• Distracted answer = 0 points
• Wrong answer to a question = 0 points
• Points are based on the number of questions you answered correctly.

Mathematics

Your Scores
Your projected SAT score is **44**.
www.collegeboard.org/psatnmsqt

Score Range
The range of scores for students who scored higher than 44% of test takers is 30 to 48.

Percentile
The range of scores for students who scored higher than 44% of test takers is 30 to 48.

Section Scores
Your scores for each section are shown below. The scores for each section are based on the number of questions you answered correctly.

Question	Correct Answer	Your Answer	Difficulty
1	A	✓	m
2	C	✓	m
3	A	✓	m
4	B	✓	m
5	E	B	m
6	B	D	e
7	A	C	m
8	C	E	h
9	C	D	m
10	A	C	h
11	B	✓	m
12	C	✓	m
13	B	✓	m
14	D	✓	e
15	E	C	m
16	B	✓	m
17	D	✓	m
18	A	B	m
19	C	✓	m
20	E	✓	m

Key
✓ Correct
o Incorrect
u Unanswered

Scoring
• Correct answer = 1 point
• Distracted answer = 0 points
• Wrong answer to a question = 0 points
• Points are based on the number of questions you answered correctly.

Writing Skills

Your Scores
Your projected SAT score is **44**.
www.collegeboard.org/psatnmsqt

Score Range
The range of scores for students who scored higher than 44% of test takers is 30 to 48.

Percentile
The range of scores for students who scored higher than 44% of test takers is 30 to 48.

Section Scores
Your scores for each section are shown below. The scores for each section are based on the number of questions you answered correctly.

Question	Correct Answer	Your Answer	Difficulty
1	A	✓	m
2	C	✓	m
3	A	✓	m
4	B	✓	m
5	E	B	m
6	B	D	e
7	A	C	m
8	C	E	h
9	C	D	m
10	A	C	h
11	B	✓	m
12	C	✓	m
13	B	✓	m
14	D	✓	e
15	E	C	m
16	B	✓	m
17	D	✓	m
18	A	B	m
19	C	✓	m
20	E	✓	m

Key
✓ Correct
o Incorrect
u Unanswered

Scoring
• Correct answer = 1 point
• Distracted answer = 0 points
• Wrong answer to a question = 0 points
• Points are based on the number of questions you answered correctly.

Number & Operations
12 of 19 questions correct (63%)

Algebra & Functions
3 of 5 questions correct (60%)

Geometry & Measurement
8 of 10 questions correct (80%)

Data, Statistics & Probability
6 of 8 questions correct (75%)

Grammatical Relationships between Words
3 of 12 questions correct (25%)

Words & Phrases Used to Modify or Compare
1 of 5 questions correct (20%)

Phrases & Clauses
6 of 10 questions correct (60%)

Correctly Formed Sentences
1 of 6 questions correct (17%)

Relationships of Sentences & Paragraphs
2 of 6 questions correct (33%)

Get suggestions for improving your score at www.collegeboard.org/psatnmsqt.

Find out why you missed questions at www.collegeboard.org/psatnmsqt.

SAT[®] The PSAT/NMSQT is a great way to get ready for the SAT. The best time to take the SAT is spring of junior year. Register and practice at sat.org.

AP[®] Congratulations, your scores show that you have potential for success in at least one AP course! Log in to see your full report. AP classes bring college to high school to help you get ahead.

Your Answers: Student-Produced Responses

Name: **STUDENT, IMA**

Year: **2013** Grade: **11** School Code: **123456** Optional Code: **00** Student Copy

PSAT/NMSQT[®]
Score Report Plus

Critical Reading

Mathematics

Writing Skills

Your Scores

Section Scores Also see your projected SAT[®] scores at www.collegeboard.org/quickstart

Score Range Scores in this range are similar to yours

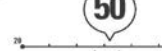
Percentile The percentage of test takers who scored below your score



National Merit Scholarship Corporation

National Merit Scholarship Corporation (NMSC) uses a Selection Index based on PSAT/NMSQT[®] scores as an initial screen of over 1.5 million students who enter its scholarship programs. (See reverse for more information.)

50



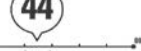
You scored higher than 50% of juniors.

52



You scored higher than 52% of juniors.

44



You scored higher than 44% of juniors.

Entry Requirements (Information you provided on your answer sheet)

High school student: **YES**
U.S. citizenship: **YES**
Year to complete high school and send full report to college: **2015**
Years to be spent in grades 9-12: **4**

Eligibility Information

If your Selection Index places you among the 16,000 high scorers who qualify for program recognition, you will be notified next September.

Your Skills

These skill categories can help you understand your score and focus your study efforts before you take the SAT.

To learn more about your skills and receive suggestions for improvement based on your test performance, visit www.collegeboard.org/quickstart and sign in using your code below.

Online Access Code
A02670146P

Determining the Meaning of Words

9 of 15 questions correct (60%)

Author's Craft: Style, Tone & Technique

3 of 5 questions correct (60%)

Reasoning & Inference

8 of 10 questions correct (80%)

Organization & Ideas

2 of 8 questions correct (25%)

Understanding Literary Elements

4 of 10 questions correct (40%)

Number & Operations

12 of 15 questions correct (80%)

Algebra & Functions

3 of 5 questions correct (60%)

Geometry & Measurement

8 of 10 questions correct (80%)

Data, Statistics & Probability

6 of 8 questions correct (75%)

Get suggestions for improving your skill set before you take the SAT.
www.collegeboard.org/quickstart

Grammatical Relationships between Words

3 of 12 questions correct (25%)

Words & Phrases Used to Modify or Compare

1 of 5 questions correct (20%)

Phrases & Clauses

6 of 10 questions correct (60%)

Correctly Formed Sentences

1 of 6 questions correct (17%)

Relationships of Sentences & Paragraphs

2 of 6 questions correct (33%)

Your Answers

See test questions and review explanations of the answers at www.collegeboard.org/quickstart

You can also ask your counselor for a copy of your test book back so you can review the questions.

Key
✓ Correct
○ Out of
✗ Incorrect

Scoring

• Correct answer = PLUS 1 POINT
• Out of answers = 0 POINTS
• Wrong answers to multiple-choice questions = MINUS 1/4 POINT
• Wrong answers to math questions = 0 POINTS
• Points are totaled, then converted to scores on the 20-40 scale

Question	Correct Answer	Test Answer	Difficulty	Question	Correct Answer	Test Answer	Difficulty	Question	Correct Answer	Test Answer	Difficulty	Question	Correct Answer	Test Answer	Difficulty
1	A	✓	✓	25	D	✓	✓	15	E	✓	✓	1	A	✓	✓
2	B	✓	✓	26	D	✓	✓	16	E	✓	✓	2	C	✓	✓
3	A	✓	✓	27	D	✓	✓	17	A	✓	✓	3	A	✓	✓
4	C	✓	✓	28	A	✓	✓	18	E	✓	✓	4	B	✓	✓
5	B	✓	✓	29	C	✓	✓	19	D	✓	✓	5	E	✓	✓
6	D	✓	✓	30	E	✓	✓	20	A	✓	✓	6	B	✓	✓
7	B	✓	✓	31	A	✓	✓	21	B	✓	✓	7	A	✓	✓
8	D	✓	✓	32	E	✓	✓	22	C	✓	✓	8	C	✓	✓
9	D	✓	✓	33	B	✓	✓	23	A	✓	✓	9	C	✓	✓
10	E	✓	✓	34	D	✓	✓	24	D	✓	✓	10	A	✓	✓
11	D	✓	✓	35	A	✓	✓	25	B	✓	✓	11	B	✓	✓
12	C	✓	✓	36	E	✓	✓	26	D	✓	✓	12	C	✓	✓
13	A	✓	✓	37	C	✓	✓	27	A	✓	✓	13	D	✓	✓
14	B	✓	✓	38	B	✓	✓	28	D	✓	✓	14	E	✓	✓
15	A	✓	✓	39	B	✓	✓	29	C	✓	✓	15	E	✓	✓
16	C	✓	✓	40	C	✓	✓	30	A	✓	✓	16	B	✓	✓
17	A	✓	✓	41	B	✓	✓	31	D	✓	✓	17	D	✓	✓
18	E	✓	✓	42	C	✓	✓	32	E	✓	✓	18	A	✓	✓
19	B	✓	✓	43	E	✓	✓	33	B	✓	✓	19	C	✓	✓
20	B	✓	✓	44	C	✓	✓	34	B	✓	✓	20	E	✓	✓
21	E	✓	✓	45	D	✓	✓	35	D	✓	✓				
22	D	✓	✓	46	A	✓	✓	36	D	✓	✓				
23	E	✓	✓	47	C	✓	✓	37	A	✓	✓				
24	A	✓	✓	48	E	✓	✓	38	B	✓	✓				

Next Steps

You've taken a step on the path to college and the future. Here are some things to consider now...

So, you're thinking about:

Sport/Fitness Administration

Learn more and see your full results at www.collegeboard.org/quickstart

Your access code: **A02670146P**

SAT[®] The PSAT/NMSQT is a great way to get ready for the SAT. The best time to take the SAT is spring of junior year. Register and practice at sat.org.

AP[®] Congratulations, your scores show that you have potential for success in at least one AP course! Log in to see your full report. AP classes bring college to high school to help you get ahead.

Your Answers: Student-Produced Responses (cont.)

Some of the math problems required you to grid in answers instead of selecting an option. For these questions, you will see the correct answer(s) written out.

Name: **STUDENT, IMA** Year: **2013** Grade: **11** School Code: **123456** Optional Code: **00** Student Copy

PSAT/NMSQT™
Score Report Plus

Critical Reading	Mathematics	Writing Skills
Your Scores Section Scores: Also see your projected SAT scores at www.collegeboard.org/quickstart Score Range: Scores in this range are similar to yours Percentile: The percentage of test takers who scored below your score	50 You scored higher than 55% of juniors.	52 You scored higher than 57% of juniors.
44 You scored higher than 33% of juniors.		

National Merit Scholarship Corporation
The National Merit Scholarship Corporation (NMSC) uses a Selection Index based on PSAT/NMSQT scores as an initial screen of over 1.5 million students who enter its scholarship programs. (See reverse for more information.)

Entry Requirements
(Information you provided on your answer sheet)
High school student: **YES**
U.S. citizenship: **YES**
Year to complete high school and send full data to college: **2015**
Years to be spent in grades 9-12: **4**

Eligibility Information
If your Selection Index places you among the 16,000 high scorers who qualify for program recognition, you will be notified next September.

Your Selection Index
Sum of scores in critical reading, mathematics and writing skills: **146**
Percentile: Compares your performance with college-bound juniors: **47**

Your Skills
These skill categories can help you understand your score and focus your study efforts before you take the SAT.
To learn more about your skills and receive targeted practice recommendations, visit www.collegeboard.org/quickstart and enter your code below.
Online Access Code: **A02670146**

	Correct Answer	Your Answer
29	7	✓ m
30	3	✓ m
31	4.5 or 9/2	✓ m
32	1000	✓ m
33	10, 12, 14, or 16	✓ h
34	8/5 or 1.6	✓ h
35	29	✓ h
36	108	50.9 h
37	42	4.2 m
38	8	10 h

Key
✓ Correct
✗ Incorrect
m Multiple choice
h Grid-in

Scoring
• Correct answer = 1 point
• Gridded answers = 0.5 points
• Wrong answers to multiple choice = 0.25 points
• Wrong answers to grid-in = 0.25 points
• Points are halved, the scores on the PSAT/NMSQT are doubled to get the SAT score.

Next Steps
You've taken a step on the path to college and the future. Here are some things to consider now...

So, you're thinking about:
Sport/Fitness Administration
Learn more and see your full results at www.collegeboard.org/quickstart
Your access code: **A02670146P**

SAT
The PSAT/NMSQT is a great way to get ready for the SAT. The best time to take the SAT is spring of junior year. Register and practice at sat.org.

AP
Congratulations, your scores show that you have potential for success in at least one AP course! Log in to see your full report. AP classes bring college to high school to help you get ahead.

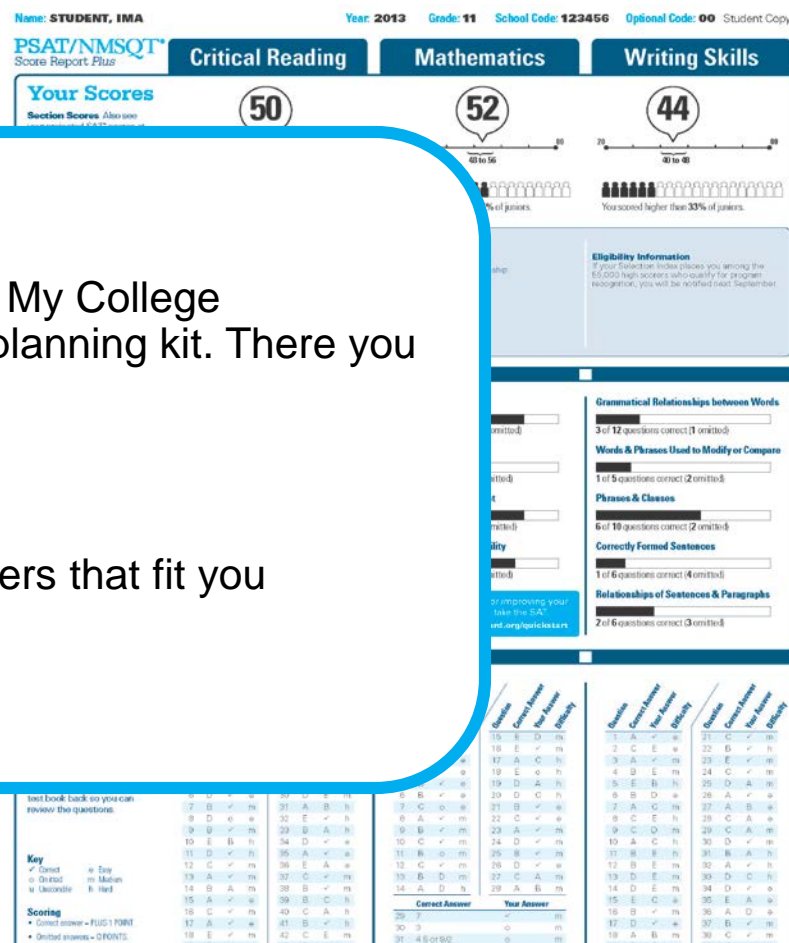
Next Steps (cont.)

What's next?

Use the access code on your report to log in to My College QuickStart, a personalized college and career planning kit. There you can:

- Search for colleges
- Get a personalized SAT study plan
- Take a personality test to find majors and careers that fit you
- See your AP Potential

www.collegeboard.org/quickstart



Next Steps

You've taken a step on the path to college and the future. Here are some things to consider now:

So, you're thinking about:

Sport/Fitness Administration

Learn more and see your full results
collegeboard.org/quickstart

Your access code: **A02670146P**

SAT

The PSAT/NMSQT is a great way to get ready for the SAT. The best time to take the SAT is spring of junior year. Register and practice at sat.org.

AP

Congratulations, your scores show that you have potential for success in at least one AP course! Log in to see your full report. AP classes bring college to high school to help you get ahead.

My College QuickStart

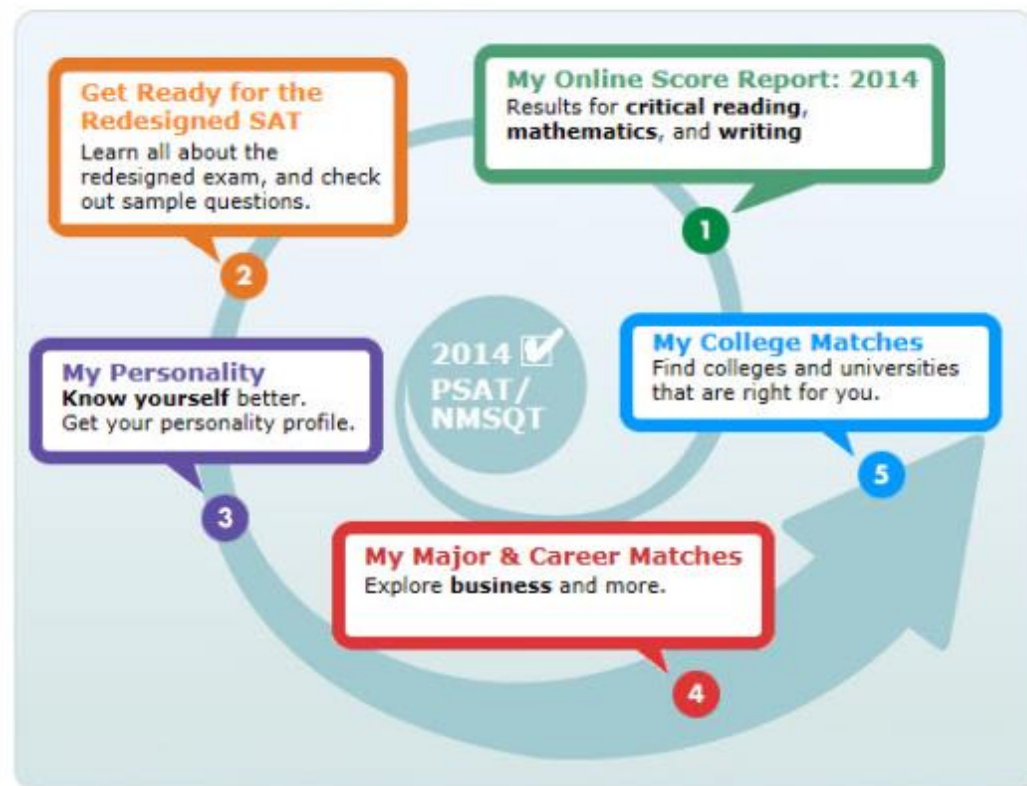
My College QuickStart™

[Home](#) > [My Organizer](#) > My College QuickStart

Welcome to your free personalized planning kit, Wed.

[Help ?](#)

Good job on PSAT/NMSQT®! Take your next steps with My College QuickStart.



Wed Tform

tform2014@cb.org

[Update My Info](#) | [Sign Out](#)

My AP Potential

Learn more about your AP Potential and see which AP Courses are the best fit for you.

[View Your Potential](#)

Taking the SAT before Spring 2016?

See what PSAT/NMSQT questions you missed, and focus on the skills you need to succeed on the SAT.

 Tell a friend about QuickStart.

My College QuickStart

My Online Score Report

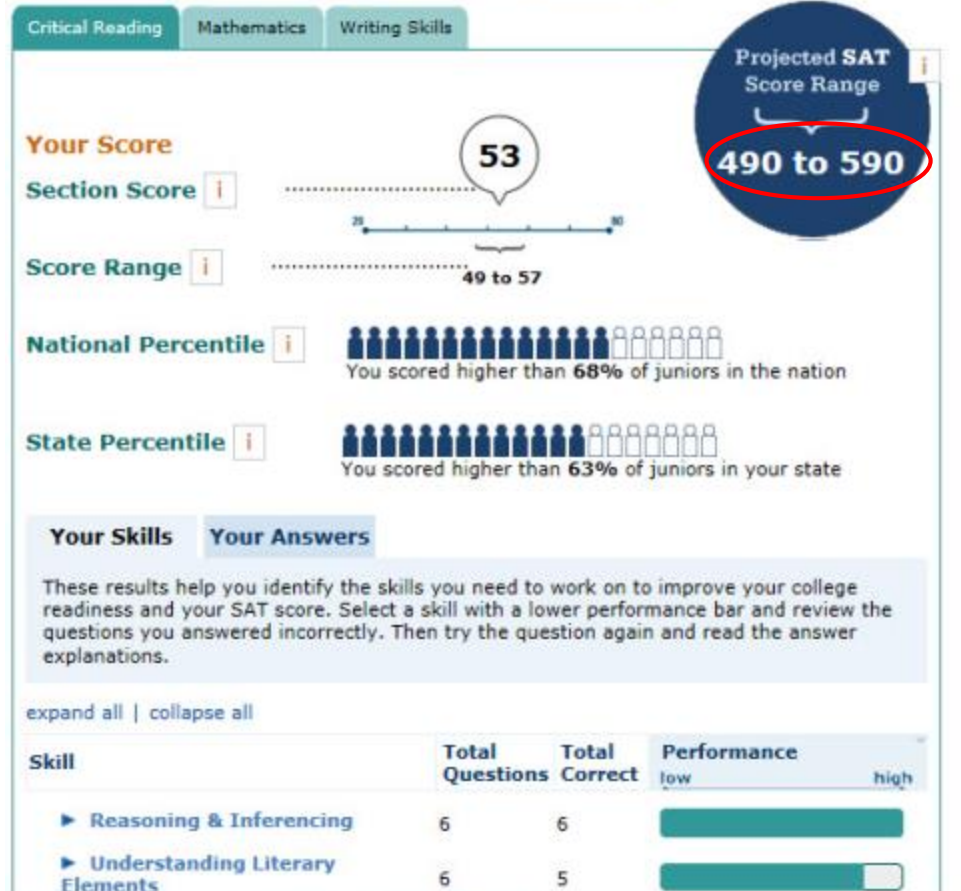
- Projected SAT® score ranges

My College QuickStart™

[Home](#) > [My Organizer](#) > [My College QuickStart](#) > My Online Score Report: 2014



My Online PSAT/NMSQT Score Report: 2014



My College QuickStart

My Online Score Report

- State percentiles

My College QuickStart™

[Home](#) > [My Organizer](#) > [My College QuickStart](#) > My Online Score Report: 2014



My Online PSAT/NMSQT Score Report: 2014

Critical Reading

Mathematics

Writing Skills

Your Score

Section Score

53

Score Range

49 to 57

Projected SAT
Score Range

490 to 590

National Percentile



You scored higher than 68% of juniors in the nation

State Percentile



You scored higher than 63% of juniors in your state

Your Skills

Your Answers

These results help you identify the skills you need to work on to improve your college readiness and your SAT score. Select a skill with a lower performance bar and review the questions you answered incorrectly. Then try the question again and read the answer explanations.

[expand all](#) | [collapse all](#)

Skill	Total Questions	Total Correct	Performance	
			low	high
► Reasoning & Inferencing	6	6		
► Understanding Literary Elements	6	5		

My College QuickStart

My Online Score Report

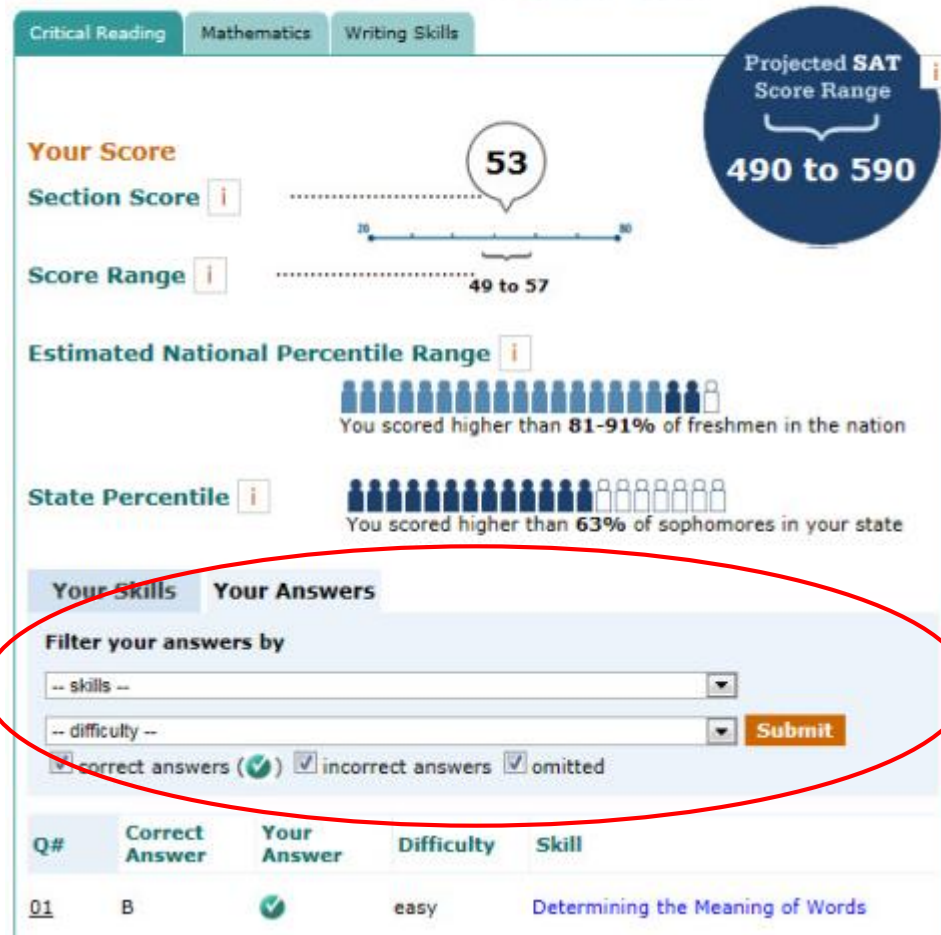
- You can filter questions

My College QuickStart™

[Home](#) > [My Organizer](#) > [My College QuickStart](#) > My Online Score Report: 2014



My Online PSAT/NMSQT Score Report: 2014



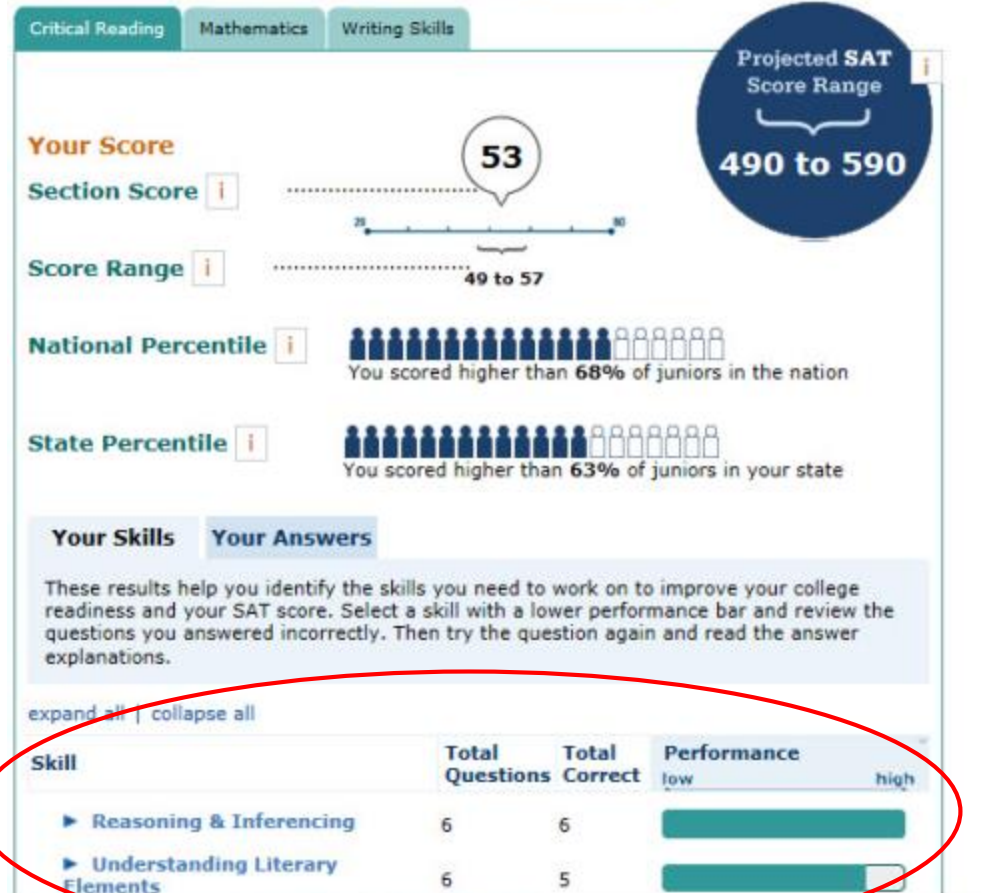
My College QuickStart

My College QuickStart™

[Home](#) > [My Organizer](#) > [My College QuickStart](#) > My Online Score Report: 2014



My Online PSAT/NMSQT Score Report: 2014



My Online Score Report

- Questions and answer explanations

My College QuickStart

My SAT Study Plan™

- Personalized skills to improve

My College QuickStart™

[Home](#) > [My Organizer](#) > [My College QuickStart](#) > [My SAT Study Plan](#)



My SAT Study Plan™

[Study Plan Home](#)

[Meet the SAT](#)

[Critical Reading](#)

[Mathematics](#)

[Writing](#)

[Practice Test](#)

[Review & Practice](#)

[My Skills Feedback](#)

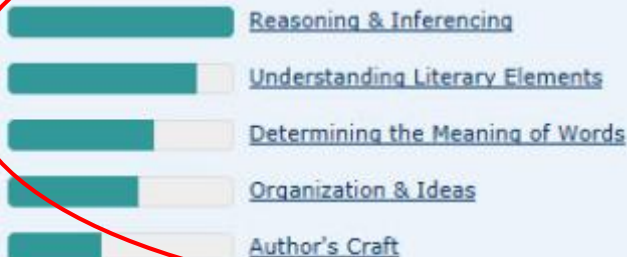
[Get Test-Taking Advice](#)

My Skills Feedback

This feedback was created especially for you, based on your PSAT/NMSQT results.

1. Select a skill with a lower performance bar and review the test questions you answered incorrectly. Then try the question again and read the answer explanations.
2. If you find the practice questions too easy, you're probably ready for the next harder level. If you find them too hard, try the next easier level.

Skills



[Previous](#)

[Next](#)

My College QuickStart

My SAT Study Plan™

- SAT practice questions

My College QuickStart™

[Home](#) > [My Organizer](#) > [My College QuickStart](#) > [My SAT Study Plan](#)



My SAT Study Plan™

[Study Plan Home](#) [Meet the SAT](#) [Critical Reading](#) [Mathematics](#) [Writing](#) [Practice Test](#)

[Review & Practice](#) [My Skills Feedback](#) [Get Test-Taking Advice](#)


Review and Practice

The SAT® gives you a chance to show how well you understand what you read. Like the PSAT/NMSQT®, the SAT has two types of multiple-choice questions in the critical reading section:

- **Sentence completion** questions test your vocabulary and your understanding of sentence structure.
- **Passage-based reading** questions test your comprehension of what is stated in or implied by the passage, not your prior knowledge of the topic.

Sentence Completions

2014 PSAT/NMSQT


0  13

9 out of 13 correct [Note](#)

- ☒ Review PSAT/NMSQT questions you answered incorrectly or omitted:
[7](#) [27](#) [28](#) [29](#)
- ☒ Answer SAT practice questions and review test directions

Passage-Based Reading

2014 PSAT/NMSQT

0  35

23 out of 35 correct [Note](#)

- ☒ Review PSAT/NMSQT questions you answered incorrectly or omitted:
[9](#) [16](#) [17](#) [18](#) [23](#) [24](#) [32](#) [33](#)
[35](#) [40](#) [42](#) [45](#)
- ☒ Answer SAT practice questions and review test directions

[Back to Meet the SAT](#) [Next](#)

My College QuickStart

My SAT Study Plan™

- An official SAT practice test

My College QuickStart™

[Home](#) > [My Organizer](#) > [My College QuickStart](#) > [My SAT Study Plan](#)



My SAT Study Plan™

[Study Plan Home](#)

[Meet the SAT](#)

[Critical Reading](#)

[Mathematics](#)

[Writing](#)

[Practice Test](#)

Take an Official SAT Practice Test

After learning from your PSAT/NMSQT® results, take an official SAT® practice test to see how well you do and where you should concentrate your efforts before test day. Return to your study plan to review practice questions and test-taking approaches for areas in which you'd like to improve.

☒ **Print and take the Official SAT Practice Test.**



☒ **Enter your answers online.**



☒ **View your score report to see where you need more practice.**



☒ **Review answer explanations and sample essays.**



[Go to the Official SAT Practice Test](#)

[Back to Writing](#)

[Return to Study Plan Home](#)

My College QuickStart

My Personality

- Personality test
- Description of your type
- Tips for success
- Majors and careers that might be a good fit for you

My Personality

Your answers to the ORA Personality Profiler® indicate that your type is:

ISFZ: The Provider

Sound Like You?

- Are you responsible, caring, and cooperative?
- Do you learn best when studying alone?
- Are you diplomatic?
- Are you motivated by order and stability?

ISFZ stands for:

- **I**ntroverting
- **S**ensing
- **F**eeling
- **O**rganiZing

No test can tell you who you are, but reflecting on your results can help you know yourself better. Decide for yourself how well the ISFZ profile fits you. For feedback that's more personalized—and to get additional information on what each letter in your type means—view your [detail results](#).

Personality Checklist

Print Checklist 

Complete the Personality Profiler.

Decide which statements on the [ISFZ home page](#) describe you well in these areas:

Strengths

Learning style

Social interactions

Motivation

Choose the tips you think will most help you maximize your potential.

Explore the [majors suggested for your type](#) that interest you. [Here's how.](#)

Research the [careers suggested for your type](#) that interest you. [Here's how.](#)

My College QuickStart

INSIGHTS

I.D. ME

EXPLORE MAJORS

FIND A COLLEGE

RESEARCH CAREERS

I.D. ME

Introduction

QuickStarts

ORA Personality Profiler®

View My Profile

THE TROUBLESHOOTERS

ISTA

ISFA

ESTA

ESFA

THE TRADITIONALISTS

ESTZ

ESFZ

ISTZ

ISFZ

THE CATALYSTS

INFA

ENFA

ENFZ

INFZ

The Traditionalists

► ISFZ The Provider

introverting feeling
sensing organizing

ISFZs are responsible, caring, reserved, and cooperative. As an ISFZ you have a modest style of helping others in orderly and practical ways. You believe it is important to follow rules and laws; similarly, you adhere to routine and prefer to see traditions preserved with little change. You are prone to worry about things beyond your control and may appear to be less confident because of your tendency to become stressed or agitated and not ask for help.

About 6%
of MyRoad
participants

You like to be with a few close friends and family members and to offer personal support wherever and whenever needed. You are good at coordinating tasks and activities for everyone but may become overburdened by taking on other people's problems. Likewise, you don't ask for the recognition you would like to have. You are quietly loyal to family, friends, and groups and institutions that are important to you, and you hope others will be as loyal in return. You avoid interpersonal conflict at all costs.

As an ISFZ you are an organized and focused learner who is good at memorizing facts and details related to people. You reliably meet deadlines and obligations. You excel at coordinating and scheduling your own activities and keep yourself and your belongings neat and in good order. You prefer to work on projects and tasks that are useful in a practical way.

► Your Strengths Include...

- A practical and dependable nature.

My College QuickStart

My College Matches

- Starter list of colleges
- Criteria to customize search
- Ability to save searches

My College Matches

Here's a starter list of colleges that are near you and offer the major you selected when you took the PSAT/NMSQT®. To update your matches, check or uncheck the choices in the "Search Criteria" box. Click on a college's name to learn all about it.

[Help ?](#)

Ima Student
istudent@test.com

[Update My Info](#) | [Sign Out](#)

Search Criteria

Location
☒ New York
☐ Mid-Atlantic
☐ Entire U.S.
[More location options](#)

College Major
☒ Major: Education
[More majors](#)

Admission [what's this?](#)
☐ Projected SAT scores:
SAT Critical Reading midrange: 460-560
SAT Math midrange: 480-590
☒ Include colleges that don't report scores
[More admission options](#)

Size
☐ Small (fewer than 2,000 students)
☐ Medium (2,000-15,000 students)
☐ Large (more than 15,000 students)
[More campus life options](#)

My College Match Results

[Save Search](#) [My Saved Searches](#)

28 Matches Found

[Print Results](#)

This is a starter list.
Customize your results using the search criteria on the left.
Click "Save Search" when you're finished.

[City University of New York: Brooklyn College](#)
Brooklyn, NY

[City University of New York: Hunter College](#)
New York, NY

[Colgate University](#)
Hamilton, NY

[College of New Rochelle](#)
New Rochelle, NY

[Columbia University](#)
New York, NY

[Concordia College](#)
Bronxville, NY

[Cornell University](#)
Ithaca, NY

[Dominican College of Blauvelt](#)
Orangeburg, NY

[Dowling College](#)
Oakdale, NY

[Houghton College](#)
Houghton, NY

[Manhattan College](#)
Riverdale, NY

[Manhattanville College](#)
Purchase, NY

[Medville College](#)

My College QuickStart

My College Matches

- Starter list of colleges
- Criteria to customize search
- Ability to save searches

Help ?

Sign Out

Print Results

Print Full Profile

Send to a Friend

City University of New York: Hunter College

New York, New York
College Board code: 2301

Add to List Compare Find Similar Map It

At a Glance Admission Cost & Financial Aid Academics & Support Sports

Deadlines SAT®, AP®, CLEP® Majors Housing & Campus Life International Students

Main Address
695 Park Avenue
New York, NY 10065
(212) 772-4000
www.hunter.cuny.edu

Admission Office
695 Park Avenue
New York, NY 10065
(212) 772-4490
admissions@hunter.cuny.edu
Contact: William Zlata
Director of Admissions

Type of School
Public
Liberal Arts College
Four-year
Coed
Percent applicants admitted: 28%
Regionally Accredited
Middle States Association of Colleges and Schools
College Board member

Calendar: Semester

Degrees offered:
▪ Bachelor's
▪ Master's

Setting
Urban setting
Very large city (over 500,000)
Commuter campus

Size
Total undergrads: 15,698
First-time degree-seeking freshmen: 2,042
Degree-seeking undergrads: 14,709
Graduate enrollment: 5,560

Search Again

Madville College

My College QuickStart

My Majors & Career Matches

- Major you chose
- Related majors
- Related careers

My Major & Career Matches

You showed an interest in drafting/design engineering technologies/technicians when you took the PSAT/NMSQT® in 2009. Now you have the perfect place to explore that interest, as well as related majors and careers—MyRoad. Link to an in-depth profile of architecture, where you'll find the facts you're looking for:

Architecture

Related Majors	Related Careers
<ul style="list-style-type: none">▪ Aeronautics▪ Art▪ Civil & Environmental Engineering▪ Design▪ Electrical Engineering▪ Mechanical Engineering	<ul style="list-style-type: none">▪ Architecture▪ Community & Government▪ Construction Management▪ Design▪ Engineering▪ Manufacturing Engineering

If you would like to update your selected major, [click here](#).

My College QuickStart

[INSIGHTS](#)[I.D. ME](#)[EXPLORE MAJORS](#)[FIND A COLLEGE](#)[RESEARCH CAREERS](#)

CIVIL ENGINEERING

[Overview](#) | [High School Courses](#) | [College Courses](#) | [Career Connection](#) | [Perspectives](#) |[Majors A-Z](#)[My Interest](#)[High](#) [Medium](#) [None](#)

Updated: 8-31-2009

Topics

[Construction Engineering & Management](#)[Environmental Engineering](#)[Geological Engineering](#)[Geotechnical Engineering](#)[Mining Engineering](#)

Overview

The ancient Egyptians built pyramids and levees. The Romans built aqueducts and the Colosseum. The Persians and ancient Greeks undertook massive building projects. Civil engineering has been practiced for thousands of years.

Civil engineers plan, design, build, and repair just about anything you can think of. That includes buildings, bridges, dams, tunnels, highways, stadiums, sewage treatment plants, power plants, airports, and even satellites. These days they're also in demand to repair the damage caused by natural disasters such as earthquakes, hurricanes, and floods. And our crumbling public structures, from bridges to tunnels, all need civil engineers to repair them.

Civil engineers plan, design, build, and repair just about anything you can think of.

Civil engineers specialize in different areas. Transportation engineers, for example, tackle problems like traffic jams and air travel safety. Water resources engineers work to control the flow of rivers and ensure clean drinking water.

As a civil engineering major, you'll take classes in several fields before focusing on one. But you'll find there's overlap in some course work. For instance, you'll learn how to build structures that can stand up to

earthquakes in both geotechnical and structural engineering. In a geotechnical engineering course, you'll focus on soil structure and foundation design. But when you study structural engineering, you'll be more concerned with designing



My College QuickStart

My AP Potential

- Courses you're likely to succeed in
- Courses that match majors you're interested in
- Courses that were offered at your school last year

Interpret your report



Potential

Your scores show that you have the potential for success in this course. Speak with your school coun [more...](#)



Some Potential

Your scores show that you have some potential for success in this AP course. Having interest in the [more...](#)



Potential Not Yet Indicated

Your scores show that you may need more preparation and support to be successful in AP. Share your g [more...](#)

What is AP?

My College QuickStart

My AP Potential

You can use this report to see your potential for AP courses based on your PSAT/NMSQT scores. AP cou [more...](#)

- 1 Review the full list of courses**
You may have potential for AP courses that aren't currently on your radar.
- 2 Take a closer look**
Sort your list to see courses related to the college majors that interest you. [Learn](#) more about each course and how it can help you succeed in college.
- 3 Talk to your school counselor and teachers**
They can help you decide the best course for you!

Communication

AP Courses	Potential	Matches Major	Your School Offered This Course
Psychology		✓	✓
Art History			✓
Calculus BC			✓
English Language		✓	✓
European History			✓

Interpret your report



Potential

Your scores show that you have the potential for success in this course. Speak with your school counselor to see if you have the appropriate prerequisite courses and find out how you can enroll. [less...](#)



Some Potential

Your scores show that you have some potential for success in this AP course. Having interest in the course subject as well as your dedication to working hard will only increase your chances for success. Speak with your school counselor to see if you have the appropriate prerequisite courses and find out how you can enroll. [less...](#)



Potential Not Yet Indicated

Your scores show that you may need more preparation and support to

The shading of the steps icons illustrates your potential

My College QuickStart

My AP Potential

You can use this report to see your potential for AP courses based on your PSAT/NMSQT scores. AP cou [more...](#)

- 1 Review the full list of courses**
You may have potential for AP courses that aren't currently on your radar.
- 2 Take a closer look**
Sort your list to see courses related to the college majors that interest you. [Learn](#) more about each course and how it can help you succeed in college.
- 3 Talk to your school counselor and teachers**
They can help you decide the best course for you!

Communication

AP Courses	Potential	Matches Major	Your School Offered This Course
Psychology		✓	✓
Art History			✓
Calculus BC			✓
English Language		✓	✓
European History			✓

Interpret your report



Potential

Your scores show that you have the potential for success in this course. Speak with your school counselor to see if you have the appropriate prerequisite courses and find out how you can enroll. [less...](#)



Some Potential

Your scores show that you have some potential for success in this AP course. Having interest in the course subject as well as your dedication to working hard will only increase your chances for success. Speak with your school counselor to see if you have the appropriate prerequisite courses and find out how you can enroll. [less...](#)



Potential Not Yet Indicated

Your scores show that you may need more preparation and support to

Choosing a major puts a checkmark in the Matches Major column next to appropriate courses

My College QuickStart

My AP Potential

You can use this report to see your potential for AP courses based on your PSAT/NMSQT scores. AP cou [more...](#)

- 1 Review the full list of courses**
You may have potential for AP courses that aren't currently on your radar.
- 2 Take a closer look**
Sort your list to see courses related to the college majors that interest you. [Learn](#) more about each course and how it can help you succeed in college.
- 3 Talk to your school counselor and teachers**
They can help you decide the best course for you!

Communication

Interpret your report



Potential

Your scores show that you have the potential for success in this course. Speak with your school counselor to see if you have the appropriate prerequisite courses and find out how you can enroll. [less...](#)



Some Potential

Your scores show that you have some potential for success in this AP course. Having interest in the course subject as well as your dedication to working hard will only increase your chances for success. Speak with your school counselor to see if you have the appropriate prerequisite courses and find out how you can enroll. [less...](#)



Potential Not Yet Indicated

Your scores show that you may need more preparation and support to

This column tells you if this course is likely offered at your school

AP Courses	Potential	Matches Major	Your School Offered This Course
Psychology		✓	✓
Art History			✓
Calculus BC			✓
English Language		✓	✓
European History			✓

My College QuickStart

My AP Potential

You can use this report to see your potential for AP courses based on your PSAT/NMSQT scores. AP cou [more...](#)

- 1 Review the full list of courses**
You may have potential for AP courses that aren't currently on your radar.
- 2 Take a closer look**
Sort your list to see courses related to the college majors that interest you. [Learn](#) more about each course and how it can help you succeed in college.
- 3 Talk to your school counselor and teachers**
They can help you decide the best course for you!

Communication ▾

AP Courses	Potential	Matches Major	Your School Offered This Course
Psychology		✓	✓
Art History			✓
Calculus BC			✓
English Language		✓	✓
European History			✓

Interpret your report



Potential

Your scores show that you have the potential for success in this course. Speak with your school counselor to see if you have the appropriate prerequisite courses and find out how you can enroll. [less...](#)



Some Potential

Your scores show that you have some potential for success in this AP course. Having interest in the course subject as well as your dedication to working hard will only increase your chances for success. Speak with your school counselor to see if you have the appropriate prerequisite courses and find out how you can enroll. [less...](#)



Potential Not Yet Indicated

Your scores show that you may need more preparation and support to

Look for courses where you have “potential”, it matches your major, and it’s offered at your school

My College QuickStart

Log in to your personalized account at

www.collegeboard.org/quickstart