



APPENDIX F

ENROLLMENT FORECAST REPORT

Portland State
Population Research
Center, May 2019

[This page intentionally left blank for the purpose of double-sided printing.]

**BEAVERTON SCHOOL DISTRICT
ENROLLMENT FORECASTS
2019-20 TO 2028-29**



MAY, 2019

**BEAVERTON SCHOOL DISTRICT
ENROLLMENT FORECASTS
2019-20 TO 2028-29**

**Prepared By
Population Research Center
Portland State University**

MAY, 2019

Project Staff:

*Charles Rynerson, Research Associate
Joshua Ollinger, Graduate Research Assistant*

CONTENTS

EXECUTIVE SUMMARY.....	1
Population, Housing, and Employment Trends	1
District-wide Enrollment Trends	1
District-wide Middle Series Enrollment Forecasts.....	2
District-wide Low Series Enrollment Forecasts.....	3
District-wide High Series Enrollment Forecasts.....	3
INTRODUCTION	7
POPULATION, EMPLOYMENT, AND HOUSING TRENDS	9
Births	10
Employment.....	10
Housing	12
ENROLLMENT TRENDS.....	19
Private and Home School Enrollment.....	21
Inter-District Transfers and Open Enrollment	21
Neighboring Districts.....	22
Enrollment at Individual Schools	23
ENROLLMENT FORECASTS.....	27
District-wide Long-range Forecast Methodology	27
District-wide Population Forecasts.....	28
District-wide Enrollment Forecasts.....	30
Individual School Forecasts.....	34
FORECAST ACCURACY.....	39
APPENDIX A: DISTRICT-WIDE POPULATION AND ENROLLMENT FORECASTS.....	
APPENDIX B: POPULATION, HOUSING, SOCIAL, AND ECONOMIC PROFILE.....	

TABLES AND CHARTS

Table 1. Historic and Forecast K-12 Enrollment, Beaverton School District.....	4
Table 2. Historic and <u>Middle Series</u> Forecast Enrollment by School Level, BSD.....	5
Table 3. City and Region Population, 2000, 2010, and 2018.....	9
Table 4. BSD Housing and Household Characteristics, 1990, 2000, and 2010.....	12
Table 5. Housing Units Authorized by Building Permits, 2014 to 2018 by Attendance Area....	14-17
Table 6. BSD Enrollment History, 2008-09 to 2018-19.....	20
Table 7. Selected School Districts, Demographic and Enrollment Highlights, 2000 to 2018.....	22
Table 8. Enrollment History for Individual Schools, 2013-14 to 2018-19.....	24-26
Table 9. Population by Age Group, <u>Middle Series</u> Forecast, BSD, 2000 to 2030.....	30
Table 10. BSD, Enrollment Forecasts by School Level, 2019-20 to 2028-29.....	33
Table 11. Enrollment Forecasts for Individual Schools, 2019-20 to 2028-29.....	36-38
Table 12. Fall 2018 Enrollment Compared to Previous Forecasts by Grade Level.....	40
Table A1. Population by Age Group, <u>Low Series</u> Forecast, BSD, 2000 to 2030.....	A-3
Table A2. Population by Age Group, <u>High Series</u> Forecast, BSD, 2000 to 2030.....	A-4
Table A3. BSD, <u>Low Series</u> Enrollment Forecasts, 2019-20 to 2028-29.....	A-5
Table A4. BSD, <u>Middle Series</u> Enrollment Forecasts, 2019-20 to 2028-29.....	A-6
Table A5. BSD, <u>High Series</u> Enrollment Forecasts, 2019-20 to 2028-29.....	A-7
Chart 1. BSD K-12 Enrollment History and Forecasts.....	4
Chart 2. Annual Births 2000 to 2017.....	10
Chart 3. Net Migration, 2000 to 2030, BSD, History and <u>Middle Series</u> Forecast.....	29
Chart 4. BSD Birth Cohorts and Kindergarten Enrollment, <u>Middle Series</u> Forecast.....	31
Chart A1. Net Migration, 1990 to 2030, History and <u>Low Series</u> Forecast.....	A-1
Chart A2. Net Migration, 1990 to 2030, History and <u>High Series</u> Forecast	A-1
Chart A3. Birth Cohorts and Kindergarten Enrollment, <u>Low Series</u> Forecast.....	A-2
Chart A4. Birth Cohorts and Kindergarten Enrollment, <u>High Series</u> Forecast.....	A-2

EXECUTIVE SUMMARY

This report presents the results of a demographic study conducted by the Portland State University Population Research Center (PRC) for the Beaverton School District (BSD). The study includes analyses of District population, housing and enrollment trends and forecasts of district-wide and individual school enrollments for the 2019-20 to 2028-29 school years.

Consistent with previous PRC reports, historic and forecast enrollment figures include general education students, and not students in Pre-Kindergarten, Self-Contained Special Education, Alternative, and Early College programs.

Population, Housing, and Employment Trends

- There were 3,103 births to BSD residents in 2017, the smallest annual total since 1996, and 19 percent fewer than the peak in 2007.
- From 2014 to 2018, permits were issued in BSD for over 3,300 single family homes and nearly 2,400 apartment units, not including senior housing and accessory dwelling units.
- The Portland Metropolitan area's seasonally adjusted unemployment rate was 3.8 percent in March 2019, matching the national rate.
- Employment in the Portland tri-county area (Multnomah, Washington, and Clackamas counties) is projected to grow by 12.7 percent from 2017 to 2027.

District-wide Enrollment Trends

- BSD enrolled 38,891 K-12 students in fall 2018, an increase of 38 students (0.1 percent) from fall 2017.
- K-12 enrollment grew by 2,694 students (seven percent) over the seven years from 2008-09 to 2015-16. However, small increases in 2016-17 and 2018-19 and a one year decline in 2017-18 amounted to a K-12 loss of three students in the most recent three years.

- Elementary (K-5th) enrollment reached a peak of 18,350 students in 2015-16. Annual losses in the subsequent three years resulted in a decline of 678 students (3.7 percent), with district-wide K-5 enrollment in 2018-19 falling to the lowest total since 2009-10.
- Fall 2018 elementary cohorts (1st-5th) grew compared to fall 2017 (K-4th), for a net gain of 172 students. The K-5 enrollment loss was attributable to a small kindergarten class (2,774 students in 2018-19) replacing a large 5th grade class (3,076 in 2017-18).
- Fall 2018 middle (6th-8th) grades enrollment was the largest in District history. Since 2008-09, there has been net growth of 1,131 students (14 percent), in 6th-8th grade enrollment.
- Fall 2018 high school (9th-12th) grades enrollment was also the largest ever. Five consecutive years of enrollment growth have led to a net gain total of 821 students (seven percent) since 2013-14 and 1,039 (10 percent) since 2008-09.

District-wide Middle Series Enrollment Forecasts

- In the *Middle Series* forecast, overall K-12 enrollment is expected to decrease by 966 students (two percent) in the next 10 years, although K-12 enrollment initially increases slightly in 2019-20 and 2020-21.
- K-5th grade enrollment declines through 2024-25 before reaching a plateau and slight recovery, ending the 10 year forecast with nearly 600 fewer students (three percent).
- After relative stability through 2021-22, grade 6-8 enrollments decline sharply in 2022-23 followed by additional decreases through 2028-29. Over the ten year forecast period grades 6-8 decline by 420 students (four percent).
- In contrast to K-8, high school enrollments grow by 568 students (five percent) through 2023-24 before declining, leading to a 46 student increase (one percent) over the ten-year period.

District-wide Low Series Enrollment Forecasts

- The *Low Series* forecast depicts a scenario under which the District experiences very little growth due to net migration, resulting in significant enrollment losses following the recent ongoing birth downturn. K-12 enrollment falls by 2,166 students (six percent) over the 10 year period.
- K-5th grade enrollments decline steadily, resulting in 1,267 fewer students (seven percent) over the 10 year forecast.
- Middle school enrollments also decline each year, leading to 745 fewer students (eight percent) in 10 years.
- After an initial gain of 537 students through 2022-23, high school enrollments decline, ending the 10 year forecast horizon with a net loss of 154 students (one percent).

District-wide High Series Enrollment Forecasts

- The *High Series* forecast includes more growth due to net migration, leading to more cohort growth and a greater recovery in births. Even so, the recent birth downturn leads to K-5 enrollment loss of 289 students (two percent) between 2018-19 and 2023-24, and relatively small K-12 growth of 421 students (one percent) over the 10 year period.
- High school grades continue to grow initially, adding 730 students (six percent) by 2023-24. Toward the end of the forecast smaller cohorts reach high school, resulting in a 335 student (three percent) loss in 9th-12th grade enrollment from 2023-24 to 2028-29.

Table 1 and Chart 1 summarize the district-wide K-12 forecasts under all three scenarios. Table 2 reports the Middle Series forecast by school level (K-5, 6-8, 9-12). Details of the enrollment forecasts are found in Table 10 on page 33 and in Appendix A for the District, and in Table 11 on pages 36-38 for each school. Individual school forecasts are consistent with the district-wide Middle Series forecast.

Table 1
Historic and Forecast K-12 Enrollment
Low, Middle, and High Series
Beaverton School District

School Year	LOW		MIDDLE		HIGH	
	Enroll-ment ¹	5 year growth	Enroll-ment ¹	5 year growth	Enroll-ment ¹	5 year growth
2008-09	36,200		36,200		36,200	
2013-14	37,876	1,676	37,876	1,676	37,876	1,676
2018-19	38,891	1,015	38,891	1,015	38,891	1,015
2023-24 (fcst.)	38,006	-885	38,605	-286	39,257	366
2028-29 (fcst.)	36,725	-1,281	37,925	-680	39,312	55
AAEG * 2018-19 to 2028-29	-0.6%		-0.3%		0.1%	

**Note: Average Annual Enrollment Growth.*

Source: Historic enrollment, Beaverton School District; Enrollment forecasts, Population Research Center, PSU, May 2019.

Chart 1
BSD K-12 Enrollment History and Forecasts

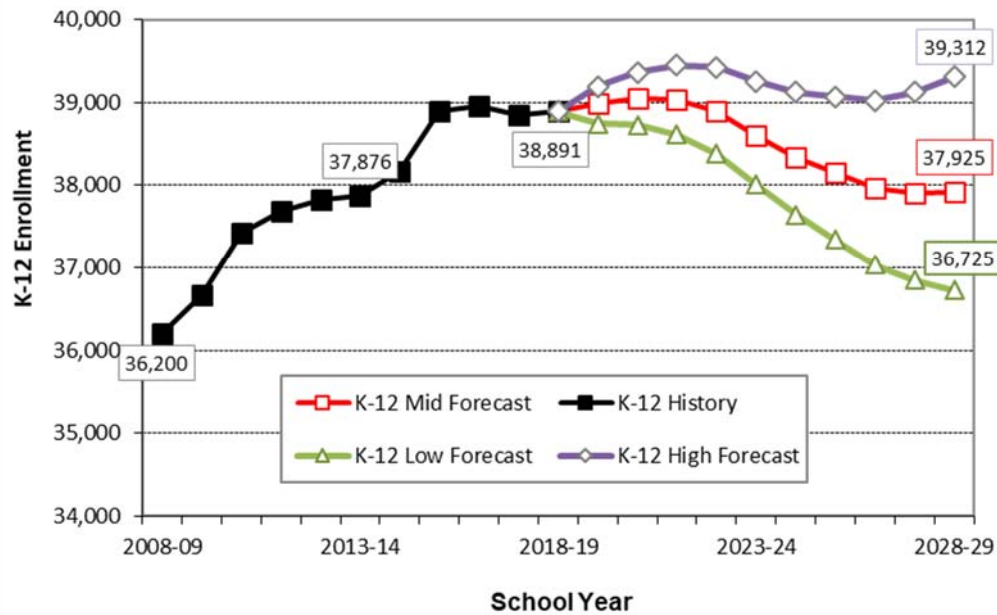


Table 2
Historic and Middle Series Forecast Enrollment
by School Level (K-5, 6-8, 9-12)
Beaverton School District

	Actual			Forecast	
	2008-09	2013-14	2018-19	2023-24	2028-29
District Total	36,200	37,876	38,891	38,605	37,925
<i>5 year change</i>		<i>1,676</i> <i>5%</i>	<i>1,015</i> <i>3%</i>	<i>-286</i> <i>-1%</i>	<i>-680</i> <i>-2%</i>
K-5	17,151	17,987	17,672	17,025	17,080
<i>5 year change</i>		836 5%	-315 -2%	-647 -4%	55 0%
6-8	8,248	8,870	9,379	9,172	8,959
<i>5 year change</i>		622 8%	509 6%	-207 -2%	-213 -2%
9-12	10,801	11,019	11,840	12,408	11,886
<i>5 year change</i>		218 2%	821 7%	568 5%	-522 -4%

Population Research Center, PSU. May 2019.

INTRODUCTION

This report presents the results of a demographic study conducted by the Portland State University Population Research Center (PRC), summarizes BSD enrollment history and local area population, housing, and economic trends, and presents forecasts for a 10 year horizon from 2019-20 to 2028-29. Information sources include the U.S. Census Bureau, birth data from the Oregon Center for Health Statistics, city and county population estimates produced by PRC, and housing development data from the cities and counties.

The Beaverton School District has the third largest enrollment among Oregon school districts. It serves nearly all of the City of Beaverton and smaller portions of the cities of Tigard, Hillsboro, and Portland. The 2010 Census shows that a majority of the District's residents live in unincorporated Washington County, in communities such as Aloha, Oak Hills, Cedar Mill, and Bethany.

Following this introduction are sections presenting recent population, employment, housing, and enrollment trends. Next are the results of the district-wide enrollment forecasts and individual school forecasts, and a description of the methodology used to produce them. The final section contains a brief discussion of the nature and accuracy of forecasts. Appendices contain details of the three district-wide forecasts and a profile containing a summary of population, housing, social and economic estimates from the Census Bureau's American Community Survey.

POPULATION, EMPLOYMENT, AND HOUSING TRENDS

The Beaverton School District is entirely within Washington County, which is part of the Portland-Vancouver-Beaverton metropolitan area (MSA). Between 2000 and 2010, total population within the BSD grew by 18 percent, from 214,592 persons to 253,198. This growth rate was similar to that of Washington County overall and higher than the MSA's 15 percent growth. Table 3 includes PRC's 2018 estimates for the cities and county served by BSD. Between 2010 and 2018, the cities of Beaverton, Hillsboro, and Tigard, as well as the MSA as a whole, all showed slower annual growth rates compared with the 2000 to 2010 period.

Table 3
City and Region Population, 2000, 2010, and 2018

	2000	2010	2018	Avg. Annual Growth Rate	
				2000-2010	2010-2018
City of Beaverton ¹	76,129	89,803	97,000	1.7%	1.0%
BSD Portion	74,981	88,350	N/A	1.6%	--
City of Hillsboro ²	70,186	89,803	101,920	2.5%	1.6%
BSD Portion	4,682	7,540	N/A	4.8%	--
City of Portland ³	529,121	586,776	648,740	1.0%	1.3%
BSD Portion	1,015	969	N/A	-0.5%	--
City of Tigard ⁴	41,223	48,035	52,785	1.5%	1.2%
BSD Portion	6,987	7,436	N/A	0.6%	--
BSD Unincorporated	126,927	148,903	N/A	1.6%	--
BSD Total	214,592	253,198	N/A	1.7%	--
Washington County	445,342	529,710	606,280	1.7%	1.7%
Portland-Vancouver-Beaverton MSA ⁵	1,927,881	2,226,009	2,491,885	1.4%	1.1%

1. A portion of the City of Beaverton's population growth was due to the annexation of 2,075 persons between 2000 and 2010, and 382 persons between 2010 and 2018.

2. A portion of the City of Hillsboro's population growth was due to the annexation of 497 persons between 2000 and 2010, and 271 persons between 2010 and 2018.

3. A portion of the City of Portland's population change was due to the annexation of 8 persons between 2000 and 2010, and 2 persons between 2010 and 2018.

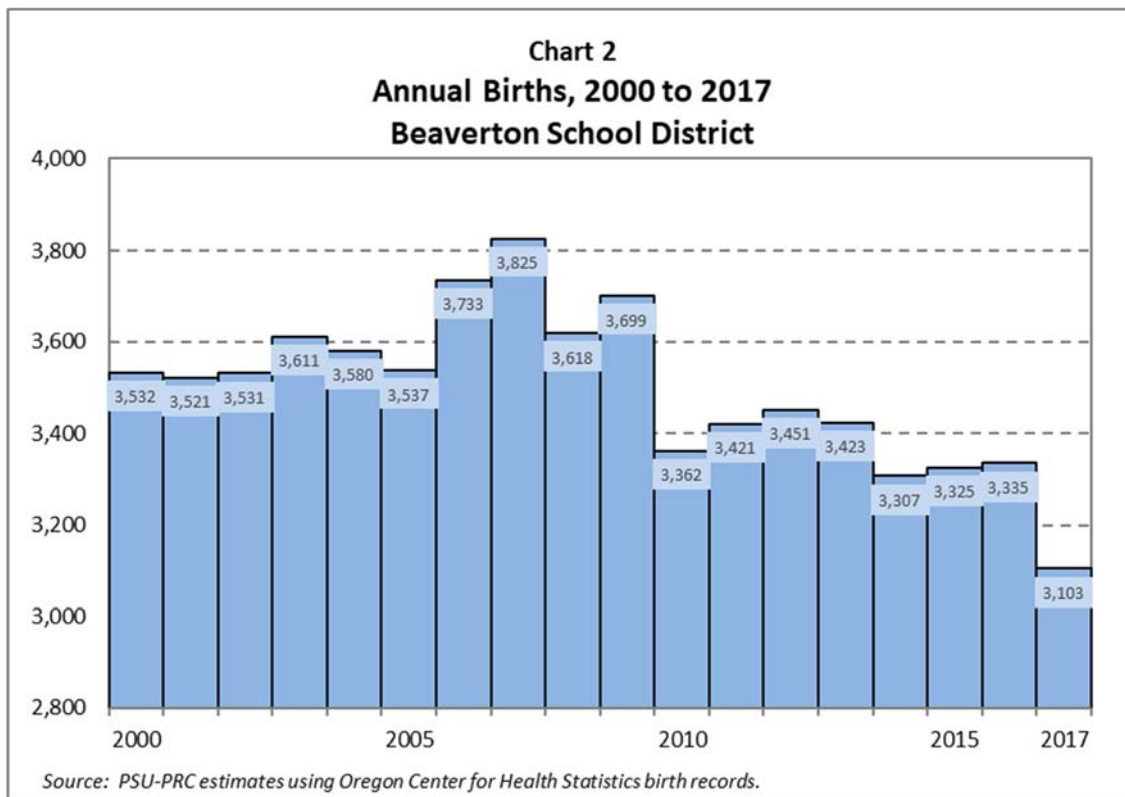
4. A portion of the City of Tigard's population growth was due to the annexation of 1,119 persons between 2000 and 2010, and 56 persons between 2010 and 2018.

5. Portland-Vancouver-Beaverton MSA consists of Clackamas, Columbia, Multnomah, Washington, Yamhill (OR) and Clark and Skamania (WA) Counties.

Sources: U.S. Census Bureau, 2000 and 2010 Censuses; Portland State University Population Research Center Estimates, July 1 2018 estimates (MSA includes estimates for Clark and Skamania Counties extrapolated from Washington Office of Financial Management April 1 2018 estimates)

Births

The number of births to women residing within the District peaked in 2007, just as it did in the U.S. and in Oregon. Chart 2 shows that births within the BSD between 2010 and 2016 fluctuated within the 3,300 to 3,450 range before falling to 3,103 in 2017. Births in calendar year 2017 reached new 21st Century lows in BSD (fewest since 1996), Oregon (fewest since 1995), and the U.S. (fewest since 1987).¹ In the “Enrollment Forecasts” section of this report we will examine the relationship between births, migration, and subsequent school enrollments.



Employment

Population growth in the BSD depends to a great extent on the strength of the Portland-Vancouver-Hillsboro Metropolitan Statistical Area (MSA) economy. Although there are 0.93 jobs in BSD for every employed resident, recent data show that nearly three out of four residents

¹ “Births: Final Data for 2017.” National Vital Statistics Report, Volume 67, Number 8, National Center for Health Statistics; *Oregon Vital Statistics Annual Report 2017 Volume 1*, Oregon Health Authority, Center for Health Statistics.

commute outside of the District to work. About 52 percent of employed BSD residents have a Washington County workplace, while 32 percent work in Multnomah County and 8 percent in Clackamas County. Among cities in the region, the City of Portland is the leading workplace destination with 31 percent of BSD workers, followed by the cities of Beaverton (18 percent), Hillsboro (15 percent), and Tigard (7 percent).²

The MSA lost over 64,000 jobs (6 percent) between 2008 and 2010, causing in-migration to slow to a trickle. By 2013 employment totals had slowly recovered to their pre-recession peak level and the MSA added another 151,000 jobs (14 percent) between 2013 and 2018.³ The Oregon Employment Department estimates that the MSA's seasonally adjusted unemployment rate held steady at 3.8 percent in March 2019; the same as the nation and lower than Oregon (4.4 percent).⁴

The Oregon Employment Department prepared 10 year employment projections in June 2018.⁵ Following are highlights for the Portland area:

Employment in the Portland tri-county area (Multnomah, Washington, and Clackamas counties) is projected to grow by 12.7 percent from 2017 to 2027, faster than the statewide average of 12 percent. Healthcare support occupations will grow the fastest in this region, with an increase of 21.4 percent, followed by computer and mathematical occupations, with an increase of 19.6 percent. Production occupations have the slowest growth rate at 4.6 percent, followed by office and administrative support occupations at 6.8 percent.⁶

² U.S. Census Bureau, LED Origin-Destination Database (2015). Commute shed report for residents of BSD. Includes workers at firms covered by unemployment insurance (excludes most agricultural jobs and self-employed). <https://onthemap.ces.census.gov/>.

³ "Current Employment Estimates," Oregon Employment Department. <https://www.qualityinfo.org/ed-ceest>. Retrieved on January 7, 2019. Average annual non-farm employment in the Portland-Vancouver-Hillsboro MSA was 1,043,900 in 2008, 979,700 in 2010, 1,045,100 in 2013, and 1,196,100 in 2018.

⁴ "Employment in the Portland Metro Area: March 2019," May 2, 2019. Oregon Employment Department. <https://www.qualityinfo.org/documents/10182/73818/Employment+in+Portland+Metro+Area?>

⁵ Projections are available at <https://www.qualityinfo.org/projections>.

⁶ "Health Care, Computer Occupations Lead Portland Tri-County Employment Projections" State of Oregon Employment Department, September 6, 2018.

The Oregon Employment Department estimates that the non-seasonally adjusted unemployment rates in March 2019 were 3.6 percent in Washington County and 3.8 percent in the City of Beaverton.⁷

Housing

Table 4 presents housing and household characteristics for BSD compiled from the decennial censuses of 1990, 2000, and 2010. The figures are based on our aggregation of census block data to approximate the District boundaries. While there were large increases in the number of housing units and households (occupied housing units) each decade, neither the share of households with children nor the average number of persons per household changed significantly.

Table 4 Beaverton School District Housing and Household Characteristics, 1990, 2000 and 2010					
	1990	2000	2010	Change	
				'90 to '00	'00 to '10
				Number	Number
Housing Units	64,448	89,483	106,225	25,035	16,742
Households	61,052	84,841	100,138	23,789	15,297
Households with children under 18	21,749	30,695	34,671	8,946	3,976
<i>share of total</i>	36%	36%	35%		
Households with no children under 18	39,303	54,146	65,467	14,843	11,321
<i>share of total</i>	64%	64%	65%		
Household Population	152,044	213,359	251,198	61,315	37,839
Persons per Household	2.49	2.51	2.51	0.02	-0.01
<i>Source: U.S. Census Bureau, 1990, 2000 and 2010 Censuses; data aggregated to BSD boundary by Portland State University Population Research Center.</i>					

Table 5 reports the number of housing units authorized by building permits in each BSD attendance area over a five year period. Nearly half of the District's new single family home development in the past five years has occurred in the Stoller Middle School area, primarily within the North Bethany area served by Sato Elementary, Springville K-8, and Westview High School.

⁷ Washington County Economic Indicators, April 2019 (March Data). Oregon Employment Department. Retrieved at <https://www.qualityinfo.org/documents/10182/96541/Washington+County+Economic+Indicators>

While the number of single family permits peaked in 2016 in the Stoller MS/Westview HS area, they continued to outpace other secondary school areas in both 2017 and 2018. At the southern end of the District, Scholls Heights (Conestoga MS/Mountainside HS) emerged as the elementary area with the largest number of new single family permits in 2017 and 2018 due to development in the River Terrace area of the City of Tigard.

The Stoller MS area has also seen several apartment complexes completed or underway in recent years, in both Sato Elementary and Springville K-8. But the largest number of multi-family units permitted in the BSD between 2014 and 2018 have been in the Five Oaks Middle School area. They include large developments such as Merlo Village (Beaver Acres ES), Baseline 158 (Elmonica ES), and Amberglen West (McKinley ES) that have been completed and are now occupied, as well as others still under construction, the largest being a 197 unit apartment development in Amberglen (McKinley ES) permitted in 2018.

Table 5
New Housing Units Authorized by Building Permits
2014 to 2018 by Attendance Area

Single Family Units						
Elementary Area	2014	2015	2016	2017	2018	Total
Aloha-Huber Park (K-8)	17	18	24	2	9	70
Barnes	57	71	4		1	133
Beaver Acres	11	20	18	8	5	62
Bethany		3	1			4
Bonny Slope	29	30	89	77	34	259
Cedar Mill	21	21	23	14	4	83
Chehalem	2	1	2	8	8	21
Cooper Mt.	18	11	1	3	21	54
Elmonica			27	2	1	30
Errol Hassell	11		1	6		18
Findley	46		51	29		126
Fir Grove				2	1	3
Greenway			1		4	5
Hazeldale	53	68	16	6	3	146
Hiteon	49	37	6	4	6	102
Jacob Wismer	11	55	58	11		135
Kinnaman	1	1	2	5	3	12
McKay	4	3			6	13
McKinley	55	5				60
Montclair	18	8	18	6		50
Nancy Ryles	7					7
Oak Hills	2	25	25	19		71
Raleigh Hills (K-8)	4	5	2	5	1	17
Raleigh Park	7	9	6	4	1	27
Ridgewood	3	3	7	2	8	23
Rock Creek	17	1		1		19
Sato	32	200	172	135	52	591
Scholls Hts.		5	36	149	93	283
Sexton Mtn.	10	9	3	5		27
Springville (K-8)	113	125	237	148	83	706
Terra Linda	1	3	5			9
Vose	6	5	7	2	4	24
West T.V.	8	65	11	21	5	110
William Walker	2	1		2		5
District Total	615	808	853	676	353	3305

continued on next page

Table 5 (cont.)
New Housing Units Authorized by Building Permits
2014 to 2018 by Attendance Area

Single Family Units						
Middle School Area	2014	2015	2016	2017	2018	Total
Cedar Park	66	126	137	117	52	498
Conestoga	55	45	43	153	101	397
Five Oaks	83	43	69	12	15	222
Highland Park	28	20	4	16	27	95
Meadow Park	59	99	30	19	1	208
Mountain View	68	70	21	19	7	185
Stoller	219	381	518	324	135	1577
Whiteford	37	24	31	16	15	123
District Total	615	808	853	676	353	3305
High School Area						
Aloha	93	107	61	27	18	306
Beaverton	64	147	29	42	22	304
Mountainside	37	26	42	159	119	383
Southridge	77	52	30	12	20	191
Sunset	125	118	229	137	38	647
Westview	219	358	462	299	136	1474
District Total	615	808	853	676	353	3305

continued on next page

Table 5 (cont.)
New Housing Units Authorized by Building Permits
2014 to 2018 by Attendance Area

Multiple Family Units						
Elementary Area	2014	2015	2016	2017	2018	Total
Aloha-Huber Park (K-8)				32		32
Barnes						0
Beaver Acres	312				2	314
Bethany						0
Bunny Slope						0
Cedar Mill	9					9
Chehalem			87			87
Cooper Mt.						0
Elmonica	13			209		222
Errol Hassell						0
Findley						0
Fir Grove						0
Greenway						0
Hazeldale						0
Hiteon						0
Jacob Wismer						0
Kinnaman		18	25			43
McKay						0
McKinley		262	31	50	197	540
Montclair		8				8
Nancy Ryles				96		96
Oak Hills						0
Raleigh Hills (K-8)	117	44				161
Raleigh Park						0
Ridgewood	18					18
Rock Creek				40		40
Sato	18	231	111	11	20	391
Scholls Hts.						0
Sexton Mtn.	14					14
Springville (K-8)	68	16			84	168
Terra Linda						0
Vose						0
West T.V.						0
William Walker				230		230
District Total	569	579	254	668	303	2373

continued on next page

Table 5 (cont.)
New Housing Units Authorized by Building Permits
2014 to 2018 by Attendance Area

Multiple Family Units

Middle Area

Cedar Park	27					27
Conestoga				96		96
Five Oaks	325	262	31	291	199	1108
Highland Park	14		87			101
Meadow Park				230		230
Mountain View		18	25			43
Stoller	86	247	111	51	104	599
Whitford	117	52				169
District Total	569	579	254	668	303	2373

High Area

Aloha	325	18	25	241	2	611
Beaverton	135	44	87	230		496
Mountainside	14			96		110
Southridge		8				8
Sunset	9					9
Westview	86	509	142	101	301	1139
District Total	569	579	254	668	303	2373

*Source: Individual records from Construction Monitor, Inc., processed and geocoded by PSU-PRC.
Does not include senior housing or accessory dwelling units.*

ENROLLMENT TRENDS

The BSD enrolled 38,891 general education K-12 students in fall 2018, an increase of 38 students (0.1 percent) from fall 2017. K-12 enrollment grew by 2,694 students (seven percent) over the seven years from 2008-09 to 2015-16. However, small increases in 2016-17 and 2018-19 and a one year decline in 2017-18 amounted to a K-12 loss of three students in the most recent three years.

Elementary grades enrollment has declined since 2015-16, when kindergarten enrollment and K-5th grade enrollment both reached all-time highs. K-5 enrollment reached a peak of 18,350 students in 2015-16. Annual losses in the subsequent three years have resulted in a decline of 678 students (3.7 percent), with district-wide K-5 enrollment in 2018-19 falling to the lowest total since 2009-10.

While K-5 enrollment in fall 2018 was lower compared to fall 2017, cohort growth was positive. For example, there was net growth of 58 students from the fall 2017 1st grade class to the fall 2018 2nd grade class. All fall 2018 elementary cohorts (1st-5th) grew compared to the fall 2017 cohorts (K-4th), for a net gain of 172 students. The enrollment loss was attributable to a small kindergarten class (2,774 students in 2018-19) replacing a large 5th grade class (3,076 in 2017-18).

In contrast to the elementary grades enrollment, the 2018-19 middle (6th-8th) grades enrollment was the largest in District history. Middle grades enrollment increased by 25 students in fall 2018, for a total of 9,379 students. Since 2008-09, there has been net growth of 1,131 students (14 percent), in 6th-8th grade enrollment.

The 2018-19 high school (9th-12th) grades enrollment was also the largest ever. Five consecutive years of enrollment growth have led to a net gain total of 821 students (seven percent) since 2013-14 and 1,039 (10 percent) since 2018-19.

Table 6 includes the enrollment history for the District by grade level annually for the past 10 years, from 2008-09 to 2018-19. The figures at the bottom of Table 6 summarize growth by elementary, middle and high school grade level groups for five and 10 year periods.

Table 6
Beaverton School District, Enrollment History, 2008-09 to 2018-19

Grade	2008-09	2009-10	2010-11	2011-12	2012-13	2013-14	2014-15	2015-16	2016-17	2017-18	2018-19
K	2,775	2,754	2,913	2,858	2,844	2,778	2,764	2,966	2,751	2,876	2,774
1	2,886	3,105	2,977	3,056	3,062	3,082	3,011	3,019	3,020	2,781	2,949
2	2,873	2,916	3,115	3,001	3,046	3,027	3,064	3,096	3,045	2,986	2,839
3	2,935	2,903	2,943	3,125	2,946	3,034	3,033	3,080	3,079	2,994	2,987
4	2,849	2,910	2,924	2,936	3,114	2,977	3,042	3,063	3,098	3,089	3,023
5	2,833	2,857	2,946	2,941	2,940	3,089	3,004	3,126	3,080	3,076	3,100
6	2,785	2,837	2,894	2,993	2,969	2,954	3,109	3,066	3,150	3,134	3,095
7	2,749	2,822	2,840	2,894	2,970	2,962	3,005	3,136	3,121	3,142	3,142
8	2,714	2,746	2,833	2,847	2,908	2,954	2,953	2,998	3,085	3,078	3,142
9	2,836	2,814	2,925	2,967	2,893	2,907	2,959	3,013	3,041	3,161	3,166
10	2,760	2,828	2,807	2,802	2,843	2,870	2,877	2,960	2,994	3,009	3,148
11	2,618	2,740	2,738	2,588	2,639	2,665	2,708	2,724	2,810	2,793	2,820
12	2,587	2,437	2,573	2,673	2,659	2,577	2,635	2,647	2,684	2,734	2,706
Total	36,200	36,669	37,428	37,681	37,833	37,876	38,164	38,894	38,958	38,853	38,891
<i>Annual change</i>		469 1.3%	759 2.1%	253 0.7%	152 0.4%	43 0.1%	288 0.8%	730 1.9%	64 0.2%	-105 -0.3%	38 0.1%
K-5	17,151	17,445	17,818	17,917	17,952	17,987	17,918	18,350	18,073	17,802	17,672
6-8	8,248	8,405	8,567	8,734	8,847	8,870	9,067	9,200	9,356	9,354	9,379
9-12	10,801	10,819	11,043	11,030	11,034	11,019	11,179	11,344	11,529	11,697	11,840

	5 Year Change: 2008-09 to 2013-14		5 Year Change: 2013-14 to 2018-19		10 Year Change: 2008-09 to 2018-19	
	Change	Pct.	Change	Pct.	Change	Pct.
K-5	836	5%	-315	-2%	521	3%
6-8	622	8%	509	6%	1,131	14%
9-12	218	2%	821	7%	1,039	10%
Total	1,676	5%	1,015	3%	2,691	7%

**Note: Enrollments do not include students in Pre-Kindergarten, Self Contained Special Education, Alternative, and Early College programs.*

Source: Beaverton School District

Private and Home School Enrollment

The Census Bureau's American Community Survey (ACS) provides an estimate of private school enrollment among BSD residents based on a question about school enrollment by level and by type (public or private). The current ACS estimate from surveys conducted between 2013 and 2017 is that 6,111 BSD K-12th grade students were enrolled in private schools, a 12.8 percent share of all K-12th grade students, with a margin of error of plus or minus 1.3 percent.⁸

Another difference between BSD enrollment and child population can be attributed to home schooling. Home schooled students living in the District are required to register with the Northwest Regional Educational Service District (NWRES), though the statistics kept by the NWRES are not precise because students who move out of the area are not required to drop their registration. Students who enroll in public schools after being registered as home schooled are dropped from the home school registry. In 2017-18 there were 1,619 BSD residents registered as home schooled, up from 1,212 in 2016-17 and 1,202 in 2015-16.⁹ Other Washington County districts had similar large increases between 2016-17 and 2017-18, perhaps due to changes in record keeping. Even at the higher level, the 1,619 students account for less than four percent of BSD 1st-12th grade residents.

Inter-District Transfers and Open Enrollment

Under Oregon's traditional inter-district transfer (IDT) rules, students who want to attend a public school outside of their resident district have to gain approval from their home district and the district that they want to attend, and that approval must be renewed each year. Beginning in the 2012-13 school year, Oregon adopted a new Open Enrollment policy under which students may transfer without approval of their home district to a district that designates available spaces at its schools. Once the student was admitted to the new district, they did not need to reapply annually. The BSD has not admitted new students through Open Enrollment and the number of incoming non-residents through IDTs and outgoing BSD residents through IDTs and Open Enrollment has

⁸ U.S. Census Bureau 2013-2017 American Community Survey, Table S1401. The margin of error of the numeric estimate at the 90 percent confidence level is plus or minus 637; the margin of error of the share is plus or minus 1.3 percent.

⁹ Northwest Regional Education Service District, *Annual Reports*.

been negligible, having little or no impact on district-wide enrollment. The open enrollment statute contained a sunset provision, effective July 1, 2019. Therefore, districts will not enroll new students through open enrollment in 2019-20.¹⁰

Neighboring Districts

Table 7 compares several facts about BSD demographics and enrollment trends to three neighboring school districts (Hillsboro, Tigard-Tualatin, and Portland). BSD is similar to the school districts of Hillsboro and Tigard-Tualatin in that all three had enrollment growth rates lower

Table 7 Selected School Districts Demographic and Enrollment Highlights, 2000 to 2017				
	Beaverton	Hillsboro	Tigard-Tualatin	Portland
Enrollment growth, 2000-01 to 2010-11	11%	14%	8%	-12%
Enrollment growth, 2010-11 to 2017-18	6%	-1%	1%	6%
Latino enrollment, 2017-18	24%	37%	27%	16%
Population growth, 2000 to 2010	18%	20%	16%	8%
Population under age 5, 2000	7.6%	8.7%	7.1%	5.7%
Population under age 5, 2010	7.1%	7.8%	6.9%	5.6%
Population age 5 to 17, 2000	18%	20%	18%	14%
Population age 5 to 17, 2010	18%	19%	18%	12%
Population rural, 2010	0.4%	10.4%	0.1%	0.8%
Median Household Income 2013-17¹	\$75,572	\$77,181	\$66,506	\$66,254
Median Household Income - MOE	+/-1,408	+/-1,612	+/-2,425	+/-1,158
Median Value of Home 2013-17¹	\$355,400	\$287,600	\$343,000	\$390,600
Median Value of Home - MOE	+/-4,045	+/-4,017	+/-5,490	+/-3,121
<i>Data assembled by PSU Population Research Center (PRC) from several sources: U.S. Census Bureau; enrollment reports from PRC; OR Dept. of Education; U.S. Dept. of Education.</i>				
<i>1. U.S. Census Bureau, 2013-17 American Community Survey (ACS) 5 Year Estimates. Table B19013, Median Household Income; Table B25077, Median Value of Owner-Occupied Housing Units. In 2017 inflation adjusted dollars. ACS data needs to be interpreted along with margins of error (MOE).</i>				

¹⁰ The Oregon Department of Education has more information about transfers between districts at <https://www.oregon.gov/ode/schools-and-districts/Pages/transfers-between-districts.aspx>

between 2010 and 2017 than previously experienced from 2000 to 2010. Furthermore, the three school districts also had similar school age population proportions. BSD is most similar to the Tigard-Tualatin S.D. in its Latino Enrollment and median value of its owner-occupied single family homes. BSD has a relatively high median household income not statistically different from Hillsboro. However, under the Census Bureau's urban and rural classification BSD is more than 99 percent urban population, comparable to Tigard-Tualatin and Portland.

Enrollment at Individual Schools

Year-to-year changes at individual schools can result from program changes or boundary changes that do not reflect demographic trends. However, as the District saw elementary enrollment decline between fall 2017 and fall 2018, 13 of the District's 34 neighborhood elementary schools had significant losses of more than 20 students, while only six saw significant growth of more than 20 students. There were 15 elementary schools with one year enrollment changes of 20 students or fewer. The largest growth among elementary schools occurred at Nancy Ryles (+66), Sato (+94), and Springville K-8 (+50). The largest losses occurred at Beaver Acres (-79) and at Fir Grove (-62).

Having only three grades, middle schools are subject to annual fluctuation in enrollment due to the size of incoming 6th grade and outgoing 8th grade classes. Most of the enrollment changes between fall 2017 and fall 2018 at the middle schools with the largest increases (Cedar Park +59, Mountain View +77, and Stoller +72) and the largest decrease (Five Oaks -46) were attributable to the size of incoming and outgoing cohorts.

All high schools experienced boundary changes between the 2016-17 and 2017-18 school years, and enrollment changes in 2018-19 continued to be influenced by those changes. In particular, Mountainside High School opened in 2017-18 with grades 9 and 10, adding 11th grade in 2018-19.

Total enrollment at each of the District's schools and changes over the most recent five years are shown in Table 8.

Table 8
Enrollment History for Individual Schools, 2013-14 to 2018-19

School	Historic Enrollment						5 year change 2013-14 to 2018-19	
	2013-14	2014-15	2015-16	2016-17	2017-18	2018-19	Number	Percent
Aloha-Huber Park (K-8)	942	993	1012	976	921	926	-16	-2%
Barnes	754	743	677	631	621	634	-120	-16%
Beaver Acres	759	742	771	743	702	623	-136	-18%
Bethany	526	519	553	554	530	534	8	2%
Bonny Slope	622	655	643	622	638	650	28	5%
Cedar Mill	310	339	386	408	418	428	118	38%
Chehalem	487	488	514	494	476	471	-16	-3%
Cooper Mt.	488	494	487	508	505	469	-19	-4%
Elmonica	575	589	610	650	714	757	182	32%
Errol Hassell	499	468	488	453	466	441	-58	-12%
Findley	805	820	826	778	726	685	-120	-15%
Fir Grove	502	508	502	470	447	385	-117	-23%
Greenway	416	407	362	380	353	332	-84	-20%
Hazeldale	444	420	506	495	430	440	-4	-1%
Hiteon	667	673	679	657	646	638	-29	-4%
Jacob Wismer	760	730	739	702	755	725	-35	-5%
Kinnaman	688	699	670	682	665	630	-58	-8%

continued on next page

Table 8 (cont)
Enrollment History for Individual Schools, 2013-14 to 2018-19

School	Historic Enrollment						5 year change 2013-14 to 2018-19	
	2013-14	2014-15	2015-16	2016-17	2017-18	2018-19	Number	Percent
McKay	386	351	348	292	280	283	-103	-27%
McKinley	649	632	650	619	603	575	-74	-11%
Montclair	394	358	387	366	331	307	-87	-22%
Nancy Ryles	523	554	570	616	576	642	119	23%
Oak Hills	550	560	552	562	548	552	2	0%
Raleigh Hills (K-8)	515	555	550	577	550	531	16	3%
Raleigh Park	422	403	395	354	369	353	-69	-16%
Ridgewood	421	422	446	448	414	399	-22	-5%
Rock Creek	533	530	582	598	573	578	45	8%
Sato	0	0	0	0	502	596	596	--
Scholls Heights	553	535	546	525	516	521	-32	-6%
Sexton Mt.	536	486	513	506	495	526	-10	-2%
Springville (K-8)	795	881	987	1113	771	821	26	3%
Terra Linda	417	404	407	393	360	332	-85	-20%
Vose	718	676	685	613	617	647	-71	-10%
West Tualatin View	294	322	350	349	353	331	37	13%
William Walker	532	494	475	470	455	431	-101	-19%
Elementary Totals	18,482	18,450	18,868	18,604	18,326	18,193	-289	-2%

continued on next page

Table 8 (cont.)
Enrollment History for Individual Schools, 2013-14 to 2018-19

School	Historic Enrollment						5 year change 2013-14 to 2018-19	
	2013-14	2014-15	2015-16	2016-17	2017-18	2018-19	Number	Percent
Cedar Park	861	882	893	890	872	931	70	8%
Cedar Park Summa	74	125	112	116	93	65	-9	-12%
Conestoga	861	859	853	893	959	964	103	12%
Five Oaks	860	812	799	818	831	785	-75	-9%
Highland Park	731	766	814	781	820	794	63	9%
Highland Park Summa	51	84	71	93	76	54	3	6%
Meadow Park	568	638	681	698	682	668	100	18%
Meadow Park Summa	166	162	167	150	128	126	-40	-24%
Mountain View	825	848	842	836	811	888	63	8%
Stoller	1,022	1,038	1,008	1,086	1,090	1,162	140	14%
Stoller Summa	296	325	407	404	394	352	56	19%
Whitford	562	557	586	627	608	607	45	8%
Whitford Summa	124	99	96	88	81	85	-39	-31%
Middle School Totals	7,001	7,195	7,329	7,480	7,445	7,481	480	7%
Aloha	1,999	1,989	1,937	1,899	1,774	1,773	-226	-11%
Beaverton	1,568	1,649	1,692	1,773	1,644	1,513	-55	-4%
Mountainside	0	0	0	0	873	1,350	1,350	--
Southridge	1,666	1,615	1,581	1,598	1,440	1,401	-265	-16%
Sunset	1,946	2,020	2,124	2,228	2,068	2,019	73	4%
Westview	2,406	2,450	2,553	2,576	2,484	2,364	-42	-2%
High School Totals	9,585	9,723	9,887	10,074	10,283	10,420	835	9%
ACMA	713	727	718	713	684	699	-14	-2%
Community School	182	182	164	164	161	151	-31	-17%
Health and Sciences School	695	678	702	697	721	740	45	6%
Intl. School of Beaverton	868	869	884	870	882	862	-6	-1%
Rachel Carson Env. Science	176	182	181	180	178	182	6	3%
School of Science and Tech.	174	158	161	176	173	163	-11	-6%
Options School Totals	2,808	2,796	2,810	2,800	2,799	2,797	-11	0%
District Totals	37,876	38,164	38,894	38,958	38,853	38,891	1,015	3%

Source: Beaverton School District

ENROLLMENT FORECASTS

District-wide Long-range Forecast Methodology

To ensure that enrollment forecasts are consistent with the dynamics of likely population growth within the District, we combine the grade progression enrollment model with a demographic cohort-component model used to forecast population for the District by age and sex. The components of population change are births, deaths, and migration. Using age-specific fertility rates, age-sex specific mortality rates, age-sex specific migration rates, estimates of recent net migration levels, and forecasts of future migration levels, each component is applied to the base year population in a manner that simulates the actual dynamics of population change. In addition to the middle series, or most likely, population and enrollment forecasts, we also prepared high and low series forecasts with alternative assumptions about future net migration.

The 2000 and 2010 Census results were used as a baseline for the population forecasts. By “surviving” the 2000 population and 2000s births (estimating the population in each age group that would survive to the year 2010) and comparing the “survived” population to the actual 2010 population by age group, we were able to estimate the overall level of net migration between 2000 and 2010 as well as net migration by gender and age cohort. The net migration data was used to develop initial net migration rates, which were used as a baseline for rates used to forecast net migration for the 2010 to 2030 period.

We estimated the number of births to women residing within the District each year from 1999 to 2017, using data from the Oregon Department of Human Services, Center for Health Statistics. Detailed information including the age of mothers is used to calculate fertility rates by age group for both 2000 and 2010.

The total fertility rate (TFR) is an estimate of the number of children that would be born to the average woman during her child-bearing years based on age-specific fertility rates observed at a given time. The TFR for BSD decreased from 2.00 in 2000 to 1.80 in 2010. Based on national trends and BSD births observed through 2017, we adjusted the 2010 age-specific fertility rates, decreasing rates for women under 30 and increasing rates for women age 30 and older. These adjustments result in a decrease in TFR to 1.48 in 2020. However, this is extremely low fertility;

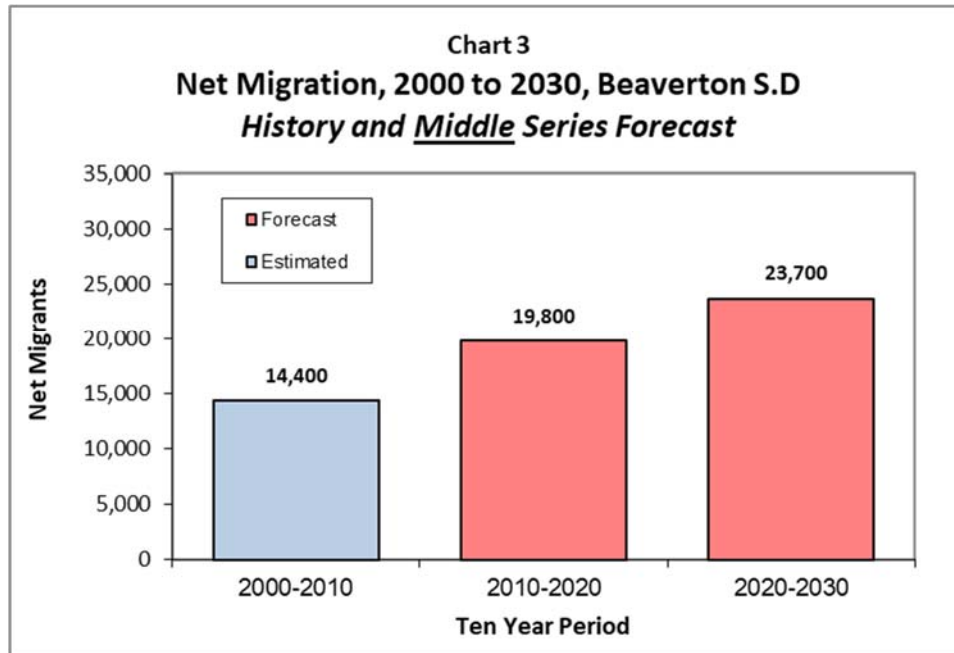
we expect a slight increase in TFR to 1.60 by 2025. The same set of future fertility rates were used in all three forecast scenarios, but the number of births varies slightly between scenarios due to differences in the populations of women in child-bearing ages.

School enrollment is linked to the population forecast in two ways. First, the kindergarten and first grade enrollments at the time of the most recent census (the 2009-10 school year) are compared to the population at the appropriate ages counted in the census. The “capture rate,” or ratio of enrollment to population, is an estimate of the share of area children who are enrolled in BSD schools. Assumptions for capture rates based on census data are used to bring new kindergarten and first grade students into the District’s enrollment. We estimate that the kindergarten capture rate is close to 0.80, indicating that 20 percent of BSD kindergarten age residents may be enrolled in private or charter schools, or home schooled.

The other way that historic population and enrollment are linked is through migration. Annual changes in school enrollment by cohort closely follow trends in the net migration of children in the District’s population. Once the students are in first grade, a set of baseline grade progression rates (GPRs) are used to move students from one grade to the next. Grade progression rates are the ratio of enrollment in an individual grade to enrollment in the previous grade the previous year. Baseline rates, usually 1.00 for elementary grades, represent a scenario under which there is no change due to migration. Enrollment change beyond the baseline is added (or subtracted, if appropriate) at each grade level depending on the migration levels of the overall population by single years of age.

District-wide Population Forecasts

Although the population within the District is forecast to continue to grow, the average annual growth rate is expected to decline. The District added about 23,000 fewer residents in the 2000s than in the 1990s. Most of the difference was due to a lower level of positive net migration (more people moving in than moving out). Natural increase (births minus deaths) has also contributed less to population growth since 2000 due to an aging population and lower fertility. Net migration in the 2010 to 2020 and 2020 to 2030 periods are forecast to be somewhat higher than in the 2000 to 2010 period. Chart 3 shows the 2000 to 2010 estimates and 2010 to 2030 forecasts of BSD population growth attributable to net migration under the middle series. Forecasts of net migration under the high and low series are presented in charts in Appendix A.



The middle series forecast for 2030 population in the BSD is 329,648, an increase of 76,450 persons from the 2010 Census (1.3 percent average annual growth). School-age population (5 to 17) is forecast to increase at a slower rate than overall population. The 2,463 person growth in school-age population between 2010 and 2030 amounts to 5 percent in the 20 year period (0.3 percent average annual growth). These middle series district-wide population forecasts by age group are presented in Table 9. The high and low population forecasts by age group are included in Appendix A.

Table 9
Population by Age Group, Middle Series Forecast
Beaverton School District, 2000 to 2030

	2000 Census	2010 Census	2020 Forecast	2030 Forecast	2010 to 2030 Change	
					Number	Percent
Under Age 5	16,362	18,090	16,148	18,975	885	5%
Age 5 to 9	16,091	17,848	17,820	18,102	254	1%
Age 10 to 14	14,820	16,892	19,200	17,796	904	5%
Age 15 to 17	8,581	10,170	11,328	11,475	1,305	13%
Age 18 to 19	4,971	5,390	6,556	6,998	1,608	30%
Age 20 to 24	15,119	15,434	17,951	20,406	4,972	32%
Age 25 to 29	19,043	21,027	23,082	26,531	5,504	26%
Age 30 to 34	18,842	20,415	20,512	23,679	3,264	16%
Age 35 to 39	18,647	20,176	22,703	25,378	5,202	26%
Age 40 to 44	18,376	18,916	21,414	21,620	2,704	14%
Age 45 to 49	16,690	18,466	20,498	23,069	4,603	25%
Age 50 to 54	13,684	17,274	18,077	20,571	3,297	19%
Age 55 to 59	9,082	15,558	17,698	19,538	3,980	26%
Age 60 to 64	6,151	12,313	15,944	16,673	4,360	35%
Age 65 to 69	4,872	8,078	14,269	16,228	8,150	101%
Age 70 to 74	4,302	5,394	11,180	14,237	8,843	164%
Age 75 to 79	3,995	4,122	7,047	12,217	8,095	196%
Age 80 to 84	2,643	3,523	4,495	8,752	5,229	148%
Age 85 and over	2,321	4,112	5,399	7,403	3,291	80%
Total Population	214,592	253,198	291,322	329,648	76,450	26%
Total age 5 to 17	39,492	44,910	48,348	47,373	2,463	5%
share age 5 to 17	18.4%	17.7%	16.6%	14.4%		

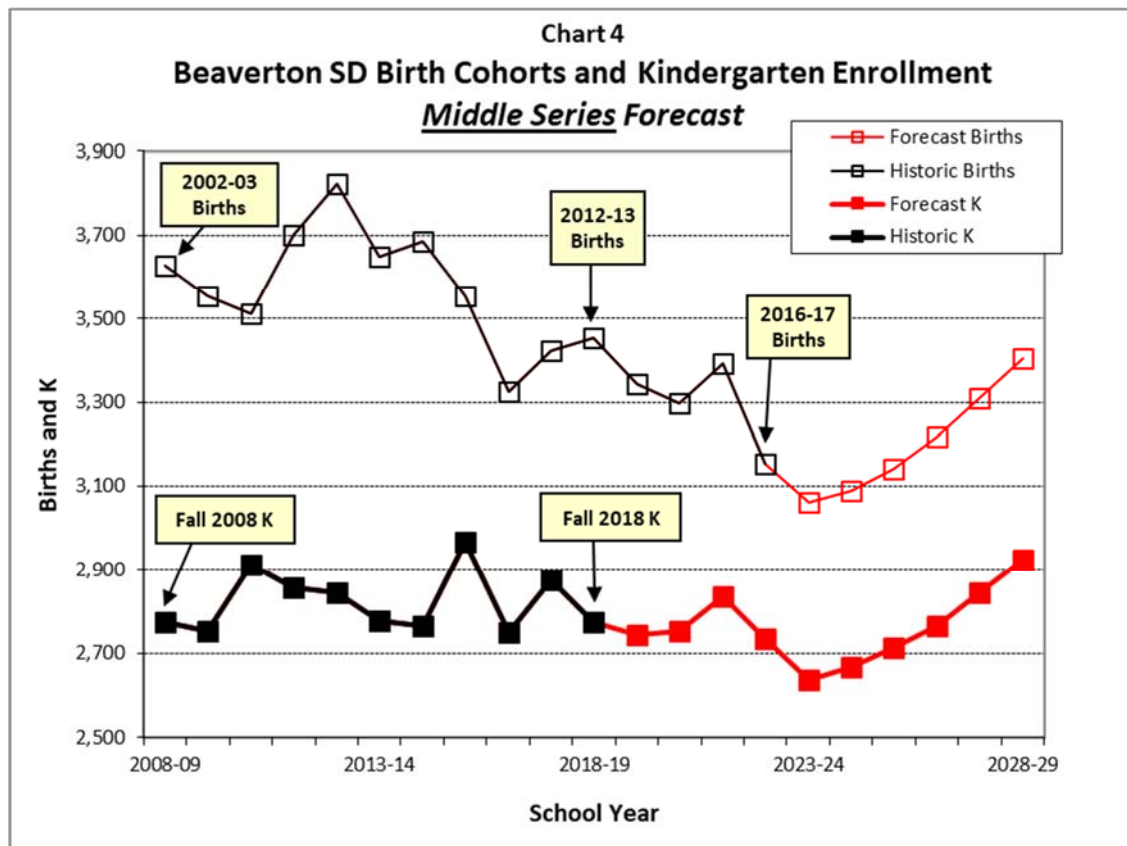
	2000-2010	2010-2020	2020-2030
Population Change	38,606	38,124	38,326
<i>Percent</i>	<i>18%</i>	<i>15%</i>	<i>13%</i>
<i>Average Annual</i>	<i>1.7%</i>	<i>1.4%</i>	<i>1.2%</i>

Source: U.S. Census Bureau, 2000, and 2010 Censuses; data aggregated to BSD boundary by Portland State University Population Research Center. PSU-PRC Forecasts, 2020 and 2030.

District-wide Enrollment Forecasts

Chart 4 compares the historic and forecast number of births to District residents with the historic and forecast number of BSD kindergarten students under the middle series. Births are compiled by kindergarten cohorts (September to August). The difference between lagged births and BSD kindergarten enrollment represents a combination of net migration and the kindergarten capture rate; many children move into and out of the District between birth and age five and not all District residents attend BSD kindergartens. Although kindergarten enrollments have fallen in most of

the years shown in the chart, the decline has not been as steep as the decline in births. Beginning in fall 2015, when full day kindergarten was fully implemented, the gap between kindergarten enrollment and previous births to BSD residents has been narrower than in years preceding 2015. In the four years from fall 2015 to fall 2018 the ratio of kindergarten to births has averaged 0.83, compared with an average of 0.77 in the eight years from fall 2007 to fall 2014.



In the *Middle Series* forecast, overall K-12 enrollment is expected to decrease by 966 students (two percent) in the next 10 years although K-12 enrollment initially increases slightly in 2019-20 and 2020-21 before declining through the forecast horizon. K-5th grade enrollment steadily declines through 2024-25 before reaching a plateau and slight recovery, ending the 10 year forecast with nearly 600 fewer K-5 students (three percent). The K-5th grade enrollment decline makes up over 60 percent of the total loss in student enrollment. After relative stability through 2021-22, grade 6-8 enrollments decline sharply in 2022-23 followed by additional decreases through 2028-29. Over the ten year forecast period grades 6-8 decline by 420 students (four percent). In contrast to K-8, high school enrollments grow by 568 students (five percent) through 2023-24 before declining, leading to a 46 student increase (one percent) over the ten-year period.

The *Low Series* forecast depicts a scenario under which the District experiences very little growth due to net migration, resulting in significant enrollment losses following the recent ongoing birth downturn. K-12 enrollment falls by 2,166 students (six percent) over the 10 year period. K-5th grade enrollments also decline steadily, resulting in 1,267 fewer students (seven percent) over the 10 year forecast. Similar to K-5, middle school enrollments also decline each year, leading to 745 fewer students (eight percent) in 10 years. After an initial gain of 537 students through 2022-23, high school enrollments decline, and end the 10 year forecast horizon with a net loss of 154 students (one percent).

The *High Series* forecast includes more growth due to net migration, leading to more cohort growth and a greater recovery in births. Even so, the recent birth downturn leads to K-5 enrollment loss of 289 students (two percent) between 2018-19 and 2023-24, and relatively small K-12 growth of 421 students (one percent) over the 10 year period. While elementary and middle grades lose enrollment in the first five years of the forecast, high school grades continue to grow, adding 730 students (six percent) by 2023-24. Toward the end of the forecast, the smaller cohorts reach high school, resulting in a 335 student (three percent) loss in 9th-12th grade enrollment between 2023-24 and 2028-29.

Table 10 contains annual district-wide forecasts by school level under the three scenarios for the District. Detailed annual forecasts by individual grades are included in Appendix A.

Table 10
Beaverton S.D. Enrollment Forecasts by School Level, 2019-20 to 2028-29

		LOW SERIES FORECAST						FORECAST CHANGE		
Grade	Actual 2018-19	2019-20	2020-21	2021-22	2022-23	2023-24	2028-29	2018-19 to 2023-24	2023-24 to 2028-29	2018-19 to 2028-29
K-5	17,672	17,352	17,131	16,976	16,897	16,591	16,405	-1,081	-186	-1,267
6-8	9,379	9,364	9,344	9,336	9,108	9,070	8,634	-309	-436	-745
9-12	11,840	12,032	12,257	12,301	12,377	12,345	11,686	505	-659	-154
Total	38,891	38,748	38,732	38,613	38,382	38,006	36,725	-885	-1,281	-2,166
<i>Annual change</i>		-143	-16	-119	-231	-376	-256			
		-0.4%	0.0%	-0.3%	-0.6%	-1.0%	-0.7%			

		MIDDLE SERIES FORECAST						FORECAST CHANGE		
Grade	Actual 2018-19	2019-20	2020-21	2021-22	2022-23	2023-24	2028-29	2018-19 to 2023-24	2023-24 to 2028-29	2018-19 to 2028-29
K-5	17,672	17,499	17,346	17,282	17,273	17,025	17,080	-647	55	-592
6-8	9,379	9,407	9,396	9,403	9,192	9,172	8,959	-207	-213	-420
9-12	11,840	12,079	12,302	12,347	12,429	12,408	11,886	568	-522	46
Total	38,891	38,985	39,044	39,032	38,894	38,605	37,925	-286	-680	-966
<i>Annual change</i>		94	59	-12	-138	-289	-136			
		0.2%	0.2%	0.0%	-0.4%	-0.7%	-0.3%			

		HIGH SERIES FORECAST						FORECAST CHANGE		
Grade	Actual 2018-19	2019-20	2020-21	2021-22	2022-23	2023-24	2028-29	2018-19 to 2023-24	2023-24 to 2028-29	2018-19 to 2028-29
K-5	17,672	17,618	17,523	17,511	17,562	17,383	17,836	-289	453	164
6-8	9,379	9,449	9,460	9,489	9,300	9,304	9,241	-75	-63	-138
9-12	11,840	12,129	12,378	12,450	12,561	12,570	12,235	730	-335	395
Total	38,891	39,196	39,361	39,450	39,423	39,257	39,312	366	55	421
<i>Annual change</i>		305	165	89	-27	-166	11			
		0.8%	0.4%	0.2%	-0.1%	-0.4%	0.0%			

**Note: Enrollments do not include students in Pre-Kindergarten, Self Contained Special Education, Alternative, and Early College programs.
Population Research Center, Portland State University, May 2019.*

Individual School Forecasts

Forecasts for individual schools are prepared under the assumption that current (2018-19) boundaries and grade configurations remain constant. The only exceptions to this are that the Summa Programs at Cedar Park and Highland Park Middle Schools are being phased out, having only 8th grade in 2019-20 and no enrollment after 2019-20. Although school districts may respond to enrollment change in various ways that might alter the status quo, such as attendance area boundary changes, opening new schools, or offering special programs, the forecasts do not incorporate any such changes, and are not constrained by school capacities.

To forecast enrollment at neighborhood schools, we first forecast the number of residents in each school attendance area. Information guiding the forecasts includes five years of historic enrollment by place of residence, recent building permits, residential development data compiled by BSD staff, and residential capacity estimates from Metro.¹¹

The resident forecasts are top-down, with K-12 forecasts for the six high school attendance areas done first and component elementary school areas (whole or part) done next. Kindergarten residents for high school attendance areas are forecast each year based on birth cohorts and trends in shares of district-wide kindergarten, adjusted for the level of expected future housing growth. At the elementary attendance area level the relationship between kindergarten students and births fluctuates widely, so kindergarten residents within elementary areas are forecast based on recent trends and are controlled to the larger high school attendance area forecasts. Grades 1-12 enrollments are forecast using grade progression rates (GPRs) based on recent cohort change, again adjusted for housing growth at the high school and elementary school levels.

The resident forecast for each neighborhood school relies on its attendance area resident forecast and assumptions about its capture rate of attendance area residents at the entry grade (kindergarten, sixth, or ninth grade). These entry grade rates are based on recent trends. For example, an elementary school with a forecast of 100 BSD kindergarten residents and a kindergarten capture rate of 0.95 would be expected to enroll 95 neighborhood students. Forecasts of residents at other grades are based on GPRs.

¹¹ See *Urban Growth Report*, Appendix 2, Buildable Lands Inventory, Metro, December 13, 2018. Linked from <https://www.oregonmetro.gov/public-projects/2018-growth-management-decision>.

Most neighborhood schools also enroll a small number of students from outside of their attendance areas. Our default assumption is that entry grade enrollments will continue to remain at their fall 2018 levels. Enrollment of non-residents at subsequent grades are based on GPRs. Final forecasts for individual schools are derived by combining resident and non-resident enrollments and are consistent with the district-wide *Middle Series* forecasts.

Table 11 presents annual enrollment forecasts for each school.

Table 11
Enrollment Forecasts for Individual Schools, 2019-20 to 2028-29

School	Actual 2018-19	Forecast										Change 2018-19- 2028-29
		2019-20	2020-21	2021-22	2022-23	2023-24	2024-25	2025-26	2026-27	2027-28	2028-29	
Aloha-Huber Park (K-8)	926	906	885	875	854	834	824	824	818	821	828	-98
Barnes	634	605	587	593	590	583	588	589	588	585	588	-46
Beaver Acres*	623	612	602	587	582	572	586	585	585	585	591	-32
Bethany	534	530	517	506	501	485	486	483	484	483	490	-44
Bonny Slope	650	664	674	685	702	698	683	687	688	687	693	43
Cedar Mill	428	440	442	434	425	416	410	407	405	404	409	-19
Chehalem	471	468	462	439	441	426	419	414	412	412	417	-54
Cooper Mt.	469	456	444	442	435	424	431	431	431	430	436	-33
Elmonica*	757	768	777	776	775	766	744	741	737	735	745	-12
Errol Hassell	441	442	437	445	439	435	435	431	426	422	425	-16
Findley	685	652	620	605	593	587	585	585	587	583	585	-100
Fir Grove	385	367	361	355	351	350	352	351	351	354	358	-27
Greenway	332	328	320	311	304	299	301	301	299	297	299	-33
Hazeldale	440	445	454	457	493	512	519	546	574	595	615	175
Hiteon	638	629	621	604	587	579	576	573	570	568	573	-65
Jacob Wismer	725	717	697	691	679	653	661	652	644	636	640	-85
Kinnaman	630	584	558	551	539	527	529	525	525	524	531	-99

**These figures reflect the 2018-19 attendance boundaries. They do not include a proposed adjustment for Elmonica, Beaver Acres and McKinley elementary schools, which was under consideration at the same time as the development of this forecast.*

continued on next page

Table 11 (cont.)
Enrollment Forecasts for Individual Schools, 2019-20 to 2028-29

School	Actual 2018-19	Forecast										Change 2018-19- 2028-29
		2019-20	2020-21	2021-22	2022-23	2023-24	2024-25	2025-26	2026-27	2027-28	2028-29	
McKay	283	261	263	251	261	265	246	244	243	241	242	-41
McKinley*	575	567	560	562	572	560	557	554	553	554	562	-13
Montclair	307	299	300	292	297	294	293	291	289	288	289	-18
Nancy Ryles	642	644	636	657	648	627	612	603	599	595	598	-44
Oak Hills	552	553	560	563	563	562	542	534	531	527	532	-20
Raleigh Hills (K-8)	531	542	556	561	553	545	538	530	525	527	529	-2
Raleigh Park	353	340	323	315	322	315	307	304	303	304	305	-48
Ridgewood	399	384	371	376	375	369	374	374	375	378	382	-17
Rock Creek	578	569	572	565	560	545	550	547	547	547	554	-24
Sato	596	632	673	698	710	727	726	738	756	771	792	196
Scholls Heights	521	524	536	547	561	569	580	586	591	593	599	78
Sexton Mt.	526	532	533	530	532	525	504	494	491	490	496	-30
Springville (K-8)	821	858	868	878	884	885	875	880	888	892	905	84
Terra Linda	332	338	332	322	322	320	311	307	304	301	301	-31
Vose	647	640	627	621	623	590	582	581	581	579	583	-64
West Tualatin View	331	328	309	303	300	294	295	293	291	290	293	-38
William Walker	431	415	405	399	394	381	378	375	373	373	376	-55
Elementary Totals	18,193	18,039	17,882	17,796	17,767	17,519	17,399	17,360	17,364	17,371	17,561	-632

**These figures reflect the 2018-19 attendance boundaries. They do not include a proposed adjustment for Elmonica, Beaver Acres and McKinley elementary schools, which was under consideration at the same time as the development of this forecast.*

continued on next page

Table 11 (cont.)
Enrollment Forecasts for Individual Schools, 2019-20 to 2028-29

	Actual	Forecast										Change
School	2018-19	2019-20	2020-21	2021-22	2022-23	2023-24	2024-25	2025-26	2026-27	2027-28	2028-29	2018-19- 2028-29
Cedar Park	931	941	968	976	968	948	925	927	909	906	903	-28
Cedar Park Summa	65	29	0	0	0	0	0	0	0	0	0	-65
Conestoga	964	950	923	929	931	957	957	959	945	959	972	8
Five Oaks	785	791	784	809	761	747	732	743	735	739	732	-53
Highland Park	794	793	809	807	775	764	743	742	725	735	729	-65
Highland Park Summa	54	27	0	0	0	0	0	0	0	0	0	-54
Meadow Park	668	651	666	658	642	639	627	620	605	613	610	-58
Meadow Park Summa	126	140	159	150	139	139	136	135	131	133	132	6
Mountain View	888	897	896	857	814	792	761	758	742	748	741	-147
Stoller	1,162	1,223	1,244	1,285	1,300	1,327	1,332	1,321	1,304	1,318	1,323	161
Stoller Summa	352	351	344	359	359	365	363	366	359	363	365	13
Whitford	607	604	592	587	543	536	523	525	512	511	511	-96
Whitford Summa	85	97	107	104	98	96	93	94	94	92	92	7
Middle School Totals	7,481	7,494	7,492	7,521	7,330	7,310	7,192	7,190	7,061	7,117	7,110	-371
Aloha	1,773	1,737	1,690	1,731	1,752	1,733	1,726	1,649	1,602	1,564	1,522	-251
Beaverton	1,513	1,476	1,499	1,447	1,453	1,441	1,402	1,372	1,346	1,272	1,246	-267
Mountainside	1,350	1,759	1,846	1,846	1,821	1,829	1,837	1,821	1,844	1,842	1,837	487
Southridge	1,401	1,363	1,431	1,444	1,434	1,371	1,350	1,284	1,232	1,214	1,155	-246
Sunset	2,019	1,988	2,056	2,073	2,057	2,061	2,039	2,000	1,988	1,950	1,917	-102
Westview	2,364	2,335	2,347	2,378	2,495	2,556	2,618	2,692	2,741	2,790	2,794	430
High School Totals	10,420	10,658	10,869	10,919	11,012	10,991	10,972	10,818	10,753	10,632	10,471	51
ACMA	699	705	704	705	689	686	684	684	684	684	684	-15
Community School	151	150	147	137	137	137	137	137	137	137	137	-14
Health and Sciences School	740	752	756	771	773	776	776	776	776	776	776	36
Intl. School of Beaverton	862	848	864	856	859	859	859	859	859	859	859	-3
Rachel Carson Env. Science	182	178	174	174	174	174	174	174	174	174	174	-8
School of Science and Tech.	163	161	156	153	153	153	153	153	153	153	153	-10
Options School Totals	2,797	2,794	2,801	2,796	2,785	2,785	2,783	2,783	2,783	2,783	2,783	-14
District Totals	38,891	38,985	39,044	39,032	38,894	38,605	38,346	38,151	37,961	37,903	37,925	-966

Population Research Center, Portland State University, May 2019.

FORECAST ACCURACY

PRC previously prepared forecasts for the District in 2002, 2008, and 2012. The 2008 and 2012 series included forecasts for the 2018-19 school year. In Table 12, actual BSD enrollment by grade level in fall 2018 is compared with the forecasts that were prepared in 2012 and in 2008. As a measure of average error for grade levels, the mean absolute percent error (MAPE) is included in the tables.

The district-wide forecasts prepared in 2012 and 2008 both predicted K-12 total enrollments higher than the actual fall 2018 enrollment. Those forecasts anticipated neither the prolonged downturn in births nor the delay in the housing recovery following the recession. The largest error in each series was in the projected elementary grades enrollment. The 2008 mid-range forecast predicted 1,644 (9.3 percent) more K-5th grade students than actual fall 2018 enrollment. The 2012 K-5 enrollments forecast for 2018-19 were closer to actual enrollment but still high by 961 students (5.4 percent).

The most accurate forecast for 2018-19 was the low range forecast prepared 11 years ago. Overall K-12 enrollment was just 77 students (0.2 percent) below actual enrollment, with school level errors of +325 (1.8 percent) for K-5th grade, -431 (-4.6 percent) for 6th-8th grade, and +29 (0.2 percent) for 9th-12th grade.

Table 12
Fall 2018 Enrollment Compared to Previous Forecasts by Grade Level

Grade	Actual	7 year forecast ¹			11 yr Low-range forecast ²			11 yr Mid-range forecast ²			11 yr High-range forecast ²		
		Fcst.	Diff.	Error	Fcst.	Diff.	Error	Fcst.	Diff.	Error	Fcst.	Diff.	Error
K	2,774	3,018	244	8.8%	2,781	7	0.3%	3,013	239	8.6%	3,247	473	17.1%
1	2,949	3,113	164	5.6%	3,062	113	3.8%	3,306	357	12.1%	3,549	600	20.3%
2	2,839	3,071	232	8.2%	3,057	218	7.7%	3,290	451	15.9%	3,520	681	24.0%
3	2,987	3,135	148	5.0%	3,048	61	2.0%	3,267	280	9.4%	3,488	501	16.8%
4	3,023	3,126	103	3.4%	3,035	12	0.4%	3,240	217	7.2%	3,448	425	14.1%
5	3,100	3,170	70	2.3%	3,014	-86	-2.8%	3,200	100	3.2%	3,392	292	9.4%
6	3,095	3,235	140	4.5%	3,034	-61	-2.0%	3,174	79	2.6%	3,325	230	7.4%
7	3,142	3,170	28	0.9%	3,010	-132	-4.2%	3,119	-23	-0.7%	3,235	93	3.0%
8	3,142	3,176	34	1.1%	2,904	-238	-7.6%	3,085	-57	-1.8%	3,273	131	4.2%
9	3,166	3,190	24	0.8%	3,039	-127	-4.0%	3,233	67	2.1%	3,432	266	8.4%
10	3,148	3,267	119	3.8%	3,127	-21	-0.7%	3,243	95	3.0%	3,362	214	6.8%
11	2,820	2,932	112	4.0%	2,929	109	3.9%	3,023	203	7.2%	3,130	310	11.0%
12	2,706	2,871	165	6.1%	2,774	68	2.5%	2,863	157	5.8%	2,963	257	9.5%
Total	38,891	40,474	1,583	4.1%	38,814	-77	-0.2%	41,056	2,165	5.6%	43,364	4,473	11.5%
MAPE³		4.2%			3.2%			6.1%			11.7%		

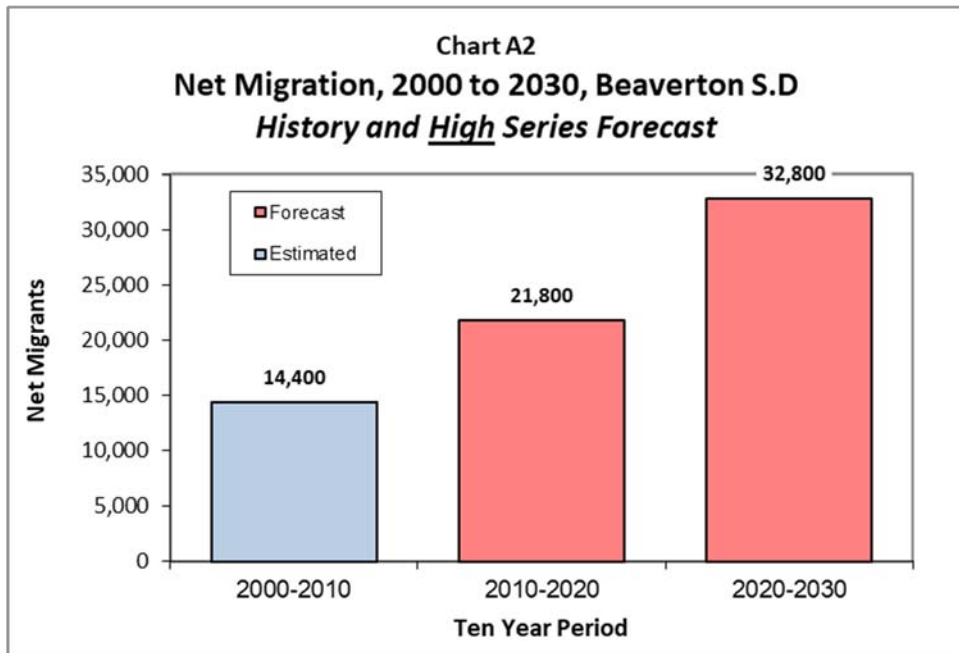
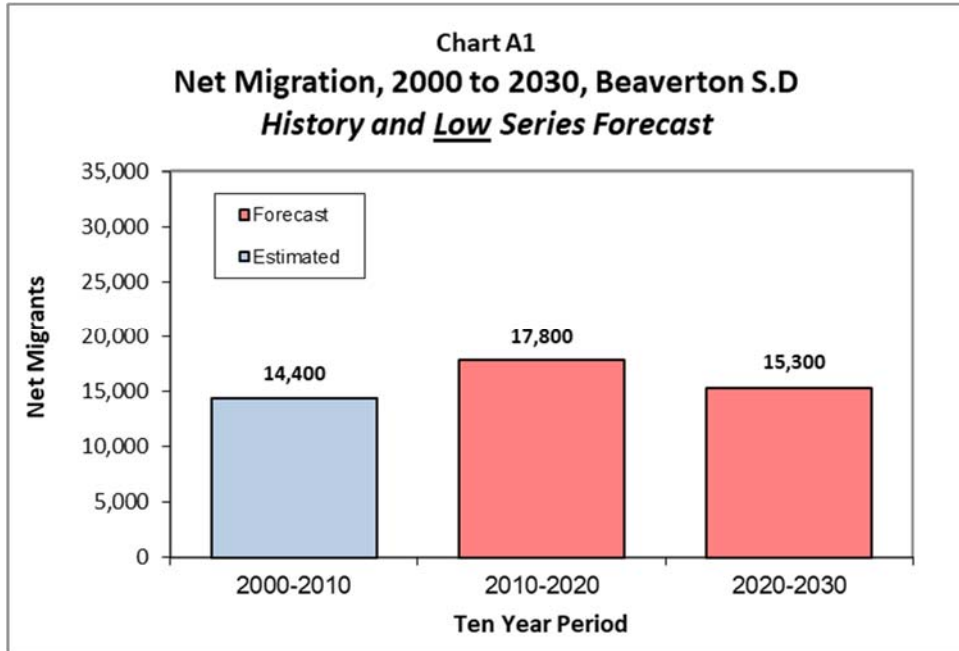
1. Forecast for 2018-19 by PSU-PRC, baseline 2011-12 enrollment, March 2012.

2. Forecast for 2018-19 by PSU-PRC, baseline 2007-08 enrollment, October 2008.

3. Mean absolute percent error for individual grades K-12.

APPENDIX A

DISTRICT-WIDE POPULATION FORECASTS AND ENROLLMENT FORECASTS



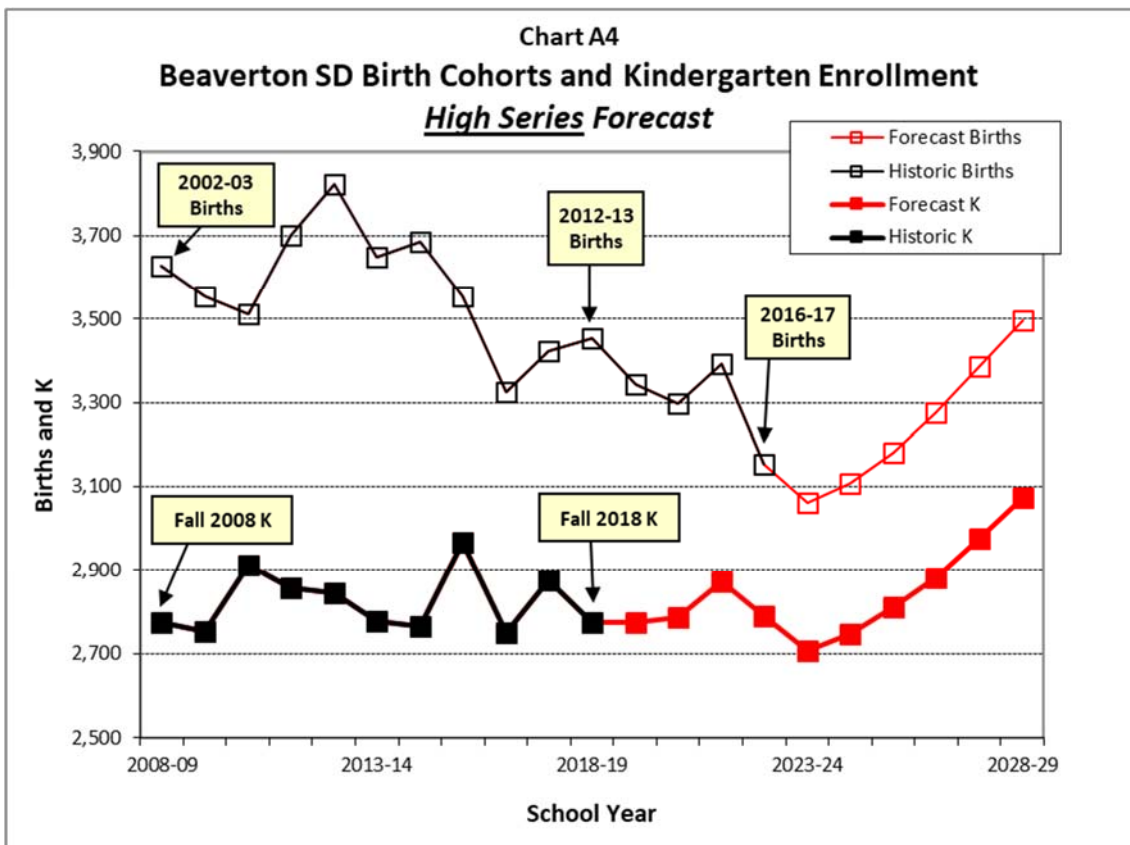
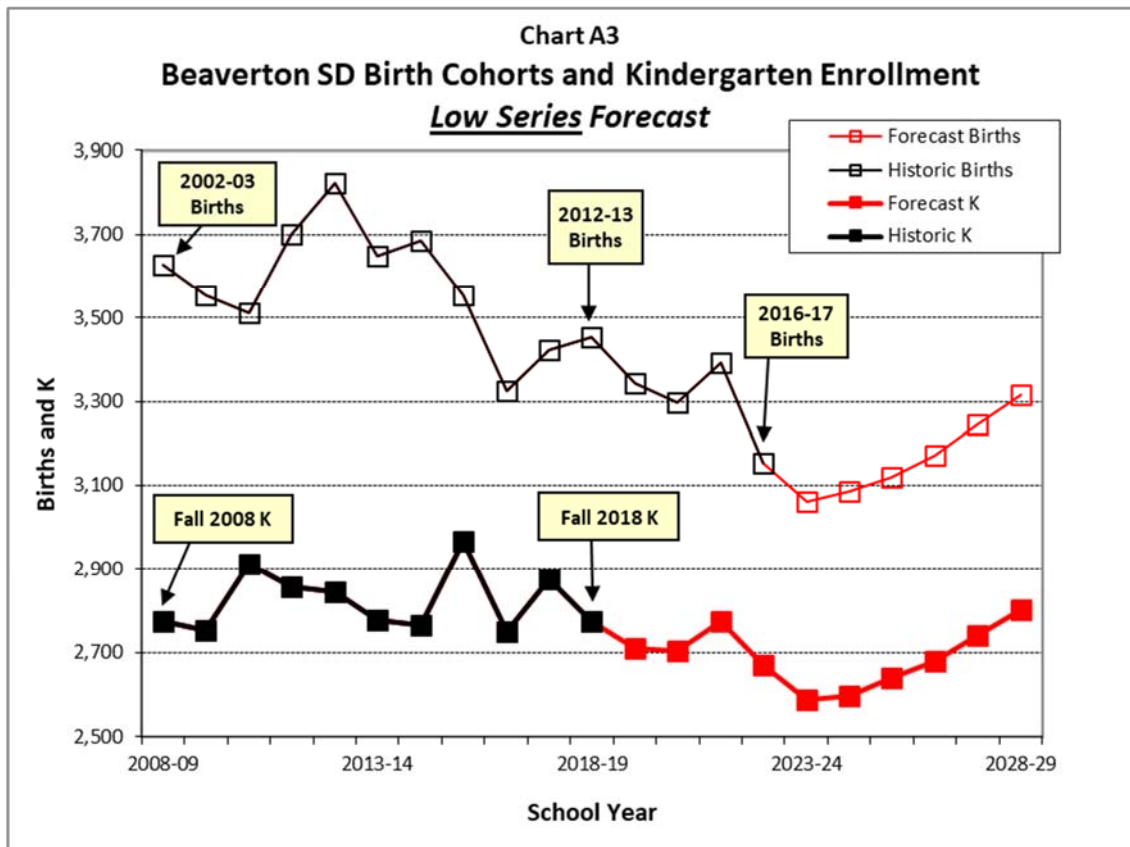


Table A1
Population by Age Group, Low Series Forecast
Beaverton School District, 2000 to 2030

	2000 Census	2010 Census	2020 Forecast	2030 Forecast	2010 to 2030 Change	
					Number	Percent
Under Age 5	16,362	18,090	15,942	17,933	-157	-1%
Age 5 to 9	16,091	17,848	17,676	17,440	-408	-2%
Age 10 to 14	14,820	16,892	19,121	17,316	424	3%
Age 15 to 17	8,581	10,170	11,290	11,326	1,156	11%
Age 18 to 19	4,971	5,390	6,441	6,734	1,344	25%
Age 20 to 24	15,119	15,434	17,789	19,871	4,437	29%
Age 25 to 29	19,043	21,027	22,793	24,126	3,099	15%
Age 30 to 34	18,842	20,415	20,272	21,923	1,508	7%
Age 35 to 39	18,647	20,176	22,510	24,377	4,201	21%
Age 40 to 44	18,376	18,916	21,287	21,040	2,124	11%
Age 45 to 49	16,690	18,466	20,445	22,527	4,061	22%
Age 50 to 54	13,684	17,274	18,082	20,192	2,918	17%
Age 55 to 59	9,082	15,558	17,708	19,219	3,661	24%
Age 60 to 64	6,151	12,313	15,916	16,494	4,181	34%
Age 65 to 69	4,872	8,078	14,178	16,018	7,940	98%
Age 70 to 74	4,302	5,394	11,097	13,971	8,577	159%
Age 75 to 79	3,995	4,122	6,977	11,907	7,785	189%
Age 80 to 84	2,643	3,523	4,414	8,478	4,955	141%
Age 85 and over	2,321	4,112	5,349	7,133	3,021	73%
Total Population	214,592	253,198	289,288	318,025	64,827	22%
Total age 5 to 17	39,492	44,910	48,087	46,082	1,172	2%
<i>share age 5 to 17</i>	18.4%	17.7%	16.6%	14.5%		

	2000-2010	2010-2020	2020-2030
Population Change	38,606	36,090	28,738
<i>Percent</i>	18%	14%	10%
<i>Average Annual</i>	1.7%	1.3%	1.0%

Source: U.S. Census Bureau, 2000, and 2010 Censuses; data aggregated to BSD boundary by Portland State University Population Research Center. PSU-PRC Forecasts, 2020 and 2030.

Table A2
Population by Age Group, High Series Forecast
Beaverton School District, 2000 to 2030

	2000 Census	2010 Census	2020 Forecast	2030 Forecast	2010 to 2030 Change	
					Number	Percent
Under Age 5	16,362	18,090	16,237	19,905	1,815	10%
Age 5 to 9	16,091	17,848	17,910	18,702	854	5%
Age 10 to 14	14,820	16,892	19,312	18,221	1,329	8%
Age 15 to 17	8,581	10,170	11,424	11,795	1,625	16%
Age 18 to 19	4,971	5,390	6,773	7,693	2,303	43%
Age 20 to 24	15,119	15,434	18,113	21,088	5,654	37%
Age 25 to 29	19,043	21,027	23,405	28,939	7,912	38%
Age 30 to 34	18,842	20,415	20,754	25,180	4,765	23%
Age 35 to 39	18,647	20,176	22,792	26,282	6,106	30%
Age 40 to 44	18,376	18,916	21,490	22,239	3,323	18%
Age 45 to 49	16,690	18,466	20,551	23,617	5,151	28%
Age 50 to 54	13,684	17,274	18,138	20,996	3,722	22%
Age 55 to 59	9,082	15,558	17,745	19,941	4,383	28%
Age 60 to 64	6,151	12,313	16,016	16,973	4,660	38%
Age 65 to 69	4,872	8,078	14,320	16,565	8,487	105%
Age 70 to 74	4,302	5,394	11,231	14,593	9,199	171%
Age 75 to 79	3,995	4,122	7,118	12,510	8,388	203%
Age 80 to 84	2,643	3,523	4,560	9,033	5,510	156%
Age 85 and over	2,321	4,112	5,471	7,637	3,525	86%
Total Population	214,592	253,198	293,359	341,910	88,712	30%
Total age 5 to 17	39,492	44,910	48,646	48,718	3,808	8%
share age 5 to 17	18.4%	17.7%	16.6%	14.2%		

	2000-2010	2010-2020	2020-2030
Population Change	38,606	40,161	48,550
<i>Percent</i>	18%	16%	17%
<i>Average Annual</i>	1.7%	1.5%	1.5%

Source: U.S. Census Bureau, 2000, and 2010 Censuses; data aggregated to BSD boundary by Portland State University Population Research Center. PSU-PRC Forecasts, 2020 and 2030.

Table A3
Beaverton School District, LOW SERIES Enrollment Forecasts, 2019-20 to 2028-29

Actual		Forecast									
Grade	2018-19	2019-20	2020-21	2021-22	2022-23	2023-24	2024-25	2025-26	2026-27	2027-28	2028-29
K	2,774	2,710	2,704	2,773	2,670	2,589	2,596	2,641	2,681	2,741	2,803
1	2,949	2,822	2,762	2,741	2,831	2,716	2,634	2,641	2,687	2,727	2,789
2	2,839	2,963	2,845	2,784	2,763	2,854	2,738	2,655	2,662	2,709	2,749
3	2,987	2,824	2,956	2,838	2,778	2,757	2,847	2,732	2,649	2,656	2,703
4	3,023	3,000	2,844	2,977	2,858	2,798	2,777	2,867	2,751	2,668	2,675
5	3,100	3,033	3,020	2,863	2,997	2,877	2,817	2,796	2,886	2,770	2,686
6	3,095	3,140	3,086	3,073	2,913	3,049	2,927	2,866	2,845	2,936	2,818
7	3,142	3,104	3,164	3,109	3,096	2,935	3,072	2,949	2,888	2,867	2,958
8	3,142	3,120	3,094	3,154	3,099	3,086	2,926	3,062	2,940	2,879	2,858
9	3,166	3,214	3,202	3,175	3,237	3,180	3,167	3,003	3,142	3,017	2,954
10	3,148	3,143	3,200	3,188	3,161	3,223	3,166	3,153	2,990	3,128	3,004
11	2,820	2,942	2,971	3,025	3,013	2,988	3,047	2,993	2,980	2,826	2,957
12	2,706	2,733	2,884	2,913	2,966	2,954	2,930	2,987	2,934	2,922	2,771
Total	38,891	38,748	38,732	38,613	38,382	38,006	37,644	37,345	37,035	36,846	36,725
Annual change		-143	-16	-119	-231	-376	-362	-299	-310	-189	-121
		-0.4%	0.0%	-0.3%	-0.6%	-1.0%	-1.0%	-0.8%	-0.8%	-0.5%	-0.3%
K-5	17,672	17,352	17,131	16,976	16,897	16,591	16,409	16,332	16,316	16,271	16,405
6-8	9,379	9,364	9,344	9,336	9,108	9,070	8,925	8,877	8,673	8,682	8,634
9-12	11,840	12,032	12,257	12,301	12,377	12,345	12,310	12,136	12,046	11,893	11,686
5 Year Change:				5 Year Change:				10 Year Change:			
2018-19 to 2023-24				2023-24 to 2028-29				2018-19 to 2028-29			
		Growth	Pct.			Growth	Pct.			Growth	Pct.
K-5		-1,081	-6%			-186	-1%			-1,267	-7%
6-8		-309	-3%			-436	-5%			-745	-8%
9-12		505	4%			-659	-5%			-154	-1%
Total		-885	-2%			-1,281	-3%			-2,166	-6%

**Note: Enrollments do not include students in Pre-Kindergarten, Self Contained Special Education, Alternative, and Early College programs.*

Population Research Center, Portland State University, May 2019

Table A4
Beaverton School District, MIDDLE SERIES Enrollment Forecasts, 2019-20 to 2028-29

Actual		Forecast									
Grade	2018-19	2019-20	2020-21	2021-22	2022-23	2023-24	2024-25	2025-26	2026-27	2027-28	2028-29
K	2,774	2,744	2,753	2,837	2,735	2,638	2,666	2,712	2,766	2,845	2,925
1	2,949	2,854	2,815	2,824	2,912	2,807	2,708	2,736	2,784	2,839	2,920
2	2,839	2,985	2,882	2,843	2,852	2,941	2,835	2,735	2,763	2,812	2,867
3	2,987	2,845	2,981	2,878	2,839	2,848	2,937	2,831	2,731	2,759	2,808
4	3,023	3,020	2,870	3,007	2,903	2,864	2,873	2,962	2,856	2,755	2,783
5	3,100	3,051	3,045	2,893	3,032	2,927	2,887	2,896	2,986	2,879	2,777
6	3,095	3,156	3,106	3,100	2,945	3,087	2,980	2,939	2,948	3,040	2,931
7	3,142	3,118	3,181	3,131	3,125	2,969	3,112	3,004	2,963	2,972	3,064
8	3,142	3,133	3,109	3,172	3,122	3,116	2,961	3,103	2,996	2,955	2,964
9	3,166	3,227	3,215	3,190	3,255	3,204	3,197	3,038	3,184	3,074	3,032
10	3,148	3,155	3,212	3,200	3,175	3,240	3,189	3,182	3,024	3,169	3,060
11	2,820	2,953	2,981	3,035	3,024	3,000	3,061	3,013	3,007	2,857	2,994
12	2,706	2,744	2,894	2,922	2,975	2,964	2,940	3,000	2,953	2,947	2,800
Total	38,891	38,985	39,044	39,032	38,894	38,605	38,346	38,151	37,961	37,903	37,925
<i>Annual change</i>		94 0.2%	59 0.2%	-12 0.0%	-138 -0.4%	-289 -0.7%	-259 -0.7%	-195 -0.5%	-190 -0.5%	-58 -0.2%	22 0.1%
K-5	17,672	17,499	17,346	17,282	17,273	17,025	16,906	16,872	16,886	16,889	17,080
6-8	9,379	9,407	9,396	9,403	9,192	9,172	9,053	9,046	8,907	8,967	8,959
9-12	11,840	12,079	12,302	12,347	12,429	12,408	12,387	12,233	12,168	12,047	11,886
		5 Year Change: 2018-19 to 2023-24		5 Year Change: 2023-24 to 2028-29		10 Year Change: 2018-19 to 2028-29					
		Growth	Pct.	Growth	Pct.	Growth	Pct.				
K-5		-647	-4%	55	0%	-592	-3%				
6-8		-207	-2%	-213	-2%	-420	-4%				
9-12		568	5%	-522	-4%	46	0%				
Total		-286	-1%	-680	-2%	-966	-2%				

**Note: Enrollments do not include students in Pre-Kindergarten, Self Contained Special Education, Alternative, and Early College programs.*

Population Research Center, Portland State University, May 2019

Table A5
Beaverton School District, HIGH SERIES Enrollment Forecasts, 2019-20 to 2028-29

Actual		Forecast									
Grade	2018-19	2019-20	2020-21	2021-22	2022-23	2023-24	2024-25	2025-26	2026-27	2027-28	2028-29
K	2,774	2,775	2,787	2,873	2,789	2,708	2,747	2,812	2,880	2,977	3,075
1	2,949	2,887	2,855	2,867	2,954	2,867	2,784	2,825	2,891	2,961	3,060
2	2,839	3,000	2,922	2,889	2,902	2,990	2,901	2,818	2,859	2,926	2,997
3	2,987	2,859	3,003	2,925	2,892	2,905	2,993	2,904	2,821	2,862	2,929
4	3,023	3,034	2,890	3,036	2,957	2,924	2,937	3,026	2,936	2,852	2,893
5	3,100	3,063	3,066	2,921	3,068	2,989	2,955	2,968	3,058	2,967	2,882
6	3,095	3,169	3,126	3,129	2,981	3,131	3,050	3,016	3,029	3,121	3,028
7	3,142	3,132	3,202	3,158	3,161	3,012	3,163	3,081	3,047	3,060	3,153
8	3,142	3,148	3,132	3,202	3,158	3,161	3,012	3,163	3,081	3,047	3,060
9	3,166	3,240	3,238	3,222	3,293	3,248	3,251	3,098	3,253	3,169	3,134
10	3,148	3,167	3,230	3,228	3,212	3,283	3,238	3,241	3,089	3,243	3,160
11	2,820	2,966	2,998	3,057	3,055	3,040	3,108	3,065	3,068	2,924	3,070
12	2,706	2,756	2,912	2,943	3,001	2,999	2,985	3,051	3,009	3,012	2,871
Total	38,891	39,196	39,361	39,450	39,423	39,257	39,124	39,068	39,021	39,121	39,312
<i>Annual change</i>		305 0.8%	165 0.4%	89 0.2%	-27 -0.1%	-166 -0.4%	-133 -0.3%	-56 -0.1%	-47 -0.1%	100 0.3%	191 0.5%
K-5	17,672	17,618	17,523	17,511	17,562	17,383	17,317	17,353	17,445	17,545	17,836
6-8	9,379	9,449	9,460	9,489	9,300	9,304	9,225	9,260	9,157	9,228	9,241
9-12	11,840	12,129	12,378	12,450	12,561	12,570	12,582	12,455	12,419	12,348	12,235

	5 Year Change: 2018-19 to 2023-24		5 Year Change: 2023-24 to 2028-29		10 Year Change: 2018-19 to 2028-29	
	Growth	Pct.	Growth	Pct.	Growth	Pct.
K-5	-289	-2%	453	3%	164	1%
6-8	-75	-1%	-63	-1%	-138	-1%
9-12	730	6%	-335	-3%	395	3%
Total	366	1%	55	0%	421	1%

**Note: Enrollments do not include students in Pre-Kindergarten, Self Contained Special Education, Alternative, and Early College programs.*

Population Research Center, Portland State University, May 2019

APPENDIX B

POPULATION, HOUSING, SOCIAL, AND ECONOMIC PROFILE

Population, Housing, Social and Economic Profile

Beaverton School District 48J, Oregon

	2008-2012			2013-2017			Compare
	Estimate	CV *	Margin of Error (+/-)	Estimate	CV *	Margin of Error (+/-)	Statistically Different?
POPULATION							
Total population	256,471	●	2,054	275,885	●	2,071	**
Percent under 18 years	24.8%	●	0.4%	23.7%	●	0.4%	**
Percent 65 years and over	9.8%	●	0.3%	11.7%	●	0.2%	**
Median age (years)	35.4	●	0.4	36.4	●	0.4	**
Percent white alone, non-Latino	68.5%	●	0.9%	65.1%	●	0.6%	**
HOUSING							
Total housing units	106,884	●	893	110,028	●	857	**
Occupied housing units	100,573	●	933	105,021	●	934	**
Owner occupied	58,642	●	998	60,544	●	937	**
Percent owner-occupied	58.3%	●	0.9%	57.6%	●	0.9%	
Renter occupied	41,931	●	1,091	44,477	●	1,095	**
Vacant housing units***	6,311	●	630	5,007	●	582	**
Vacancy rate	5.9%	●	0.6%	4.6%	●	0.5%	**
Average household size	2.54	●	0.02	2.61	●	0.02	**
Renter households paying more than 30 percent of household income on rent plus utilities	47.7%	●	2.0%	48.5%	●	1.8%	
SOCIAL							
Age 25+ with a bachelor's degree or higher	45.9%	●	0.9%	48.4%	●	0.9%	**
Foreign-born population	49,229	●	1,799	54,877	●	1,701	**
Percent foreign-born	19.2%	●	0.7%	19.9%	●	0.6%	
Age 5+ language other than English at home	58,641	●	2,219	68,828	●	1,948	**
Percent language other than English	24.6%	●	0.9%	26.6%	●	0.7%	**
ECONOMIC							
Median household income (2017 dollars)	\$69,483	●	\$1,211	\$75,572	●	\$1,408	**
Per capita income (2017 dollars)	\$36,378	●	\$762	\$37,576	●	\$675	**
Percent of persons below poverty level	10.5%	●	0.8%	10.0%	●	0.8%	

* **Green**, **yellow**, and **red** icons indicate the reliability of each estimate using the coefficient of variation (CV). The lower the CV, the more reliable the data. **High reliability** (CV <15%) is shown in green, **medium reliability** (CV between 15-30% - be careful) is shown in yellow, and **low reliability** (CV >30% - use with extreme caution) is shown in red. However, there are no absolute rules for acceptable thresholds of reliability. Users should consider the margin of error and the need for precision.

** Indicates that the two estimates are statistically different based on results of z-test taking into account the difference between the two estimates as well as an approximation of the standard errors of both estimates.

*** Vacant units include those for sale or rent, those sold or rented but not yet occupied, those held for seasonal, recreational, or occasional use, as well as other vacant such as homes under renovation, settlement of an estate, or foreclosures.

Source: U.S. Census Bureau, American Community Survey 5 year estimates. Surveys are collected over a 60 month period. Estimates represent average characteristics over the entire period. Tabulated by Population Research Center, Portland State University, with additional calculations from source data as needed.

[This page intentionally left blank for the purpose of double-sided printing.]