

LEA Name : Manheim Central SD  
Address : 281 White Oak Rd  
Manheim , PA 17545

County : Lancaster  
AUN Number : 113364403  
LEA Type : SD

## Annual Financial Report Accuracy Certification Statement

For Fiscal Year Ending  
6/30/2022

Pennsylvania Department of Education


&

Office of Comptroller Operations

PDE-2056: Intermediate Unit


PDE-2057: School District, AVTS/CTC, Charter School,  
and Special Program Jointure

**CERTIFICATION: By signing this page I agree that the electronic data submitted is a complete and accurate statement of the financial operations and status of the local education agency for the fiscal year. It has been prepared in accordance with generally accepted accounting principles and established Commonwealth of PA reporting guidelines.**

  
\_\_\_\_\_  
Chief School Administrator Signature

  
\_\_\_\_\_  
Date

  
\_\_\_\_\_  
Board Secretary Signature

  
\_\_\_\_\_  
Date

Bryan K Howett  
\_\_\_\_\_  
Contact Person

(717)664-8520 Ext :8522  
\_\_\_\_\_  
Contact Person Telephone Number

howettb@manheimcentral.org  
\_\_\_\_\_  
Contact Person E-mail Address

\_\_\_\_\_  
Contact Person Fax Number

**Audit Certification**  
**Annual Financial Report:**  
For Fiscal Year Ending 6/30/2022  
(Pursuant to PA School Code Section 218(b))

LEA Name : Manheim Central SD  
AUN Number : 113364403  
County : Lancaster

<b>Audit Certification Due:</b> 12/31/2022
---

This certification is applicable to the Annual Financial Report data submitted through the Consolidated Financial Reporting System (CFRS).

CERTIFICATION: By signing this page I agree that the financial statements of the school have been properly audited as noted above pursuant to Article XXIV, and in the auditor's professional opinion, the Annual Financial Report (PDE-2057) submitted through CFRS is materially consistent with the audited financial statements.

Chief School Administrator

  
\_\_\_\_\_  
Signature

2/1/23  
\_\_\_\_\_  
Date

Board Secretary

  
\_\_\_\_\_  
Signature

2/1/23  
\_\_\_\_\_  
Date

Bryan K Howett

\_\_\_\_\_  
Contact Person

howettb@manheimcentral.org

\_\_\_\_\_  
Contact Person E-mail Address

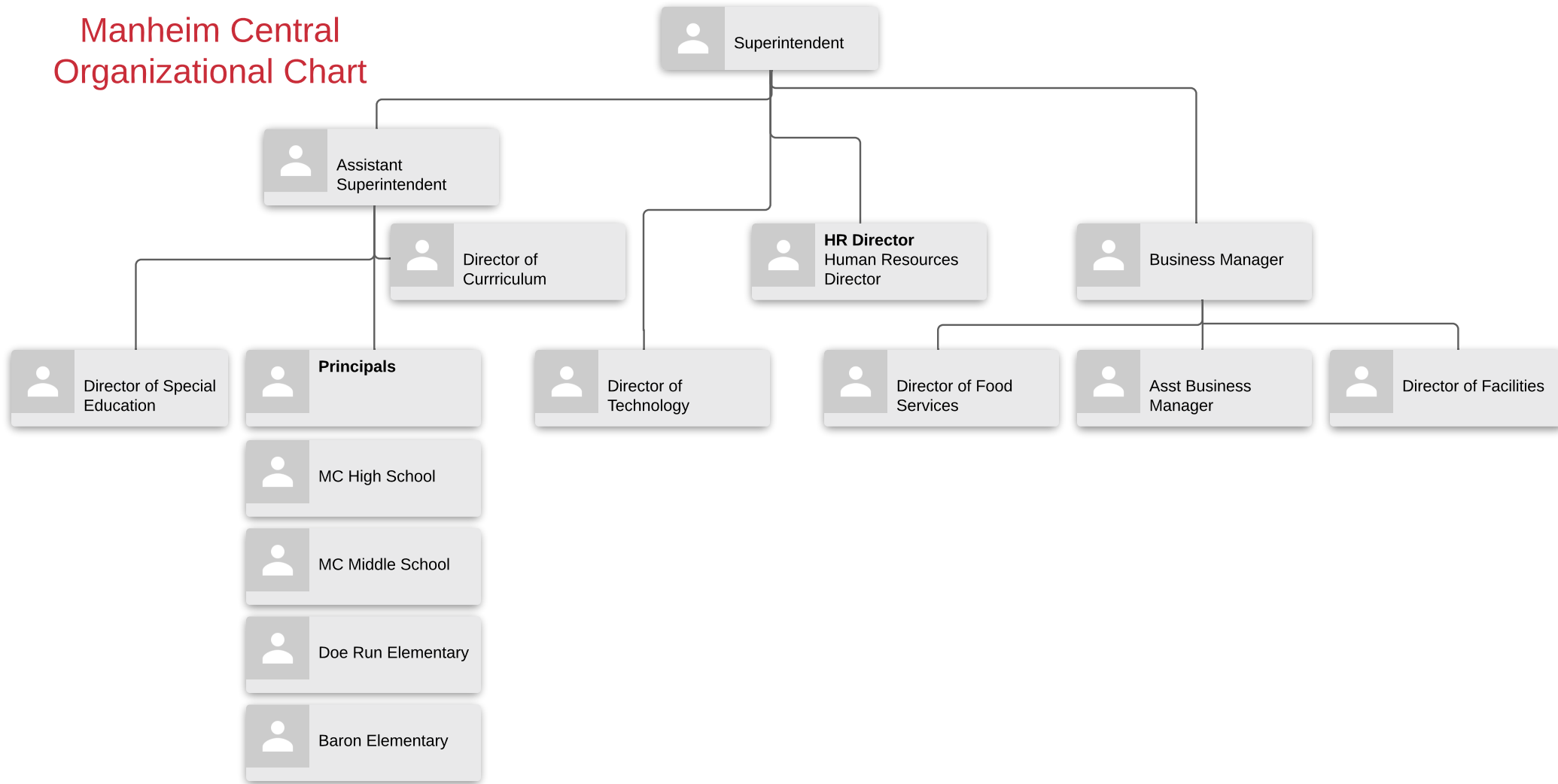
(717)664-8520

Ext :8522

\_\_\_\_\_  
Contact Person Telephone Number

\_\_\_\_\_  
Contact Person Fax Number

# Manheim Central Organizational Chart





Book	Policy Manual
Section	600 Finances
Title	GASB Statement 34
Code	622
Status	Active
Legal	24 P.S. 218 24 P.S. 613 Governmental Accounting Standards Board, Statement No. 34
Adopted	December 19, 2016

### **Purpose**

The Board recognizes the need to implement the required accounting and financial reporting standards stipulated by the Pennsylvania Department of Education.

The primary objectives of implementing the Governmental Accounting Standards Board (GASB) Statement 34 are to assure compliance with state requirements, and properly account for both the financial and economic resources of the district.

### **Delegation of Responsibility**

The responsibility to coordinate the compilation and preparation of all information necessary to implement this policy is delegated to the Business Manager.

The designated individual shall be responsible for implementing the necessary procedures to establish and maintain a fixed asset inventory, including depreciation schedules. Depreciation shall be computed on a straight-line basis over the useful lives of the assets, using an averaging convention. Normal maintenance and repairs shall be charged to expense as incurred; major renewals and betterments that materially extend the life or increase the value of the asset shall be capitalized. A schedule of accumulated depreciation shall be consistent from year to year. The basis for depreciation, including groups of assets and useful lives, shall be in writing and submitted for review to the Board.

The Business Manager shall prepare the required Management Discussion and Analysis (MD&A). The MD&A shall be in the form required by GASB Statement 34 and shall be submitted to the Board for approval, prior to publication.

Prior to submission of the MD&A for Board approval, the district's independent auditors shall review the MD&A, in accordance with SAS No. 52, "Required Supplementary Information".

### **Guidelines**

A **capitalized asset** shall be any asset acquired by donation or purchase that has a useful life of longer than one (1) year or extends the life of another capitalized asset or increases its value and meets a specific dollar threshold.

In order to associate debt with acquired assets and to avoid net asset deficits, any asset that has been acquired with debt proceeds shall be capitalized, regardless of the cost of the asset. The asset life of these assets shall be considered relative to the time of the respective debt amortizations.

All capitalized assets shall be recorded at historical cost at acquisition date or estimated cost if acquired prior to the date of the inventory done in April 2001. Any donated capital asset shall be recorded at the date of donation using the fair market value of the item at that date.

A dollar threshold for each asset shall be set at an appropriate level. Management should periodically review these levels with assistance from the local independent auditor and make any modifications necessary.

Assets that fall below the capitalization threshold for GASB 34 reporting purposes may still be significant for insurance, warranty service, and obsolescence/replacement policy tracking purposes. The district may record and maintain these non-GASB 34 asset inventories in subsidiary ledgers.

<u>Val Number</u>	<u>Description</u>	<u>Justification</u>
10001	A PY AFR Revision has been started but has not been fully submitted. The CY AFR will not be approved until the PY revision is complete including all required signature documents. Please acknowledge your understanding of this by either entering the date the PY revision will be completed or stating that this revision was started in error and can be deleted by CFRS staff.	This revision was started in error and should be deleted.
30430	Revenue Detail: AFR amount must equal or exceed PDE FAI System amount.  7220, AFR Rev Detail: \$54,681.00 7220, PDE FAI System: \$60,303.40	This was due to a reversal of a prior year accrual. The difference in amounts was recognized last fiscal year.
50281	SOIN: Current Year AFR amount must equal Prior Year AFR amount.  SOIN, Beg Bal, Other Long Term Debt/Liabilities & Extended Term Financing Agreements: \$1,246,321.00 PY Ending Bal, Other Long Term Debt/Liabilities & Extended Term Financing Agreements: \$2,494,379.00	Leases formerly reported in these categories are now being reclassified as leases on the SOIN.
50450	SESS - 2350 Legal and Accounting Services: SESS Schedule amounts for Special Education vary from prior year by 40% or more. Correct the data or enter a justification.  SESS Schedule 2350: \$420.00 Prior Year SESS Schedule 2350: \$1,413.00	The amounts are accurate. High variance but low dollar.
50480	SESS - 2700 Student Transportation Services: SESS Schedule amounts for Special Education vary from prior year by 40% or more. Correct the data or enter a justification.  SESS Schedule 2700: \$769,234.80 Prior Year SESS Schedule 2700: \$530,998.09	Transportation was up across the board. This amount is a valid amount.

Amounts Expressed in Whole Dollars	<u>General Fund</u> <u>(10)</u>	<u>Student Sponsored</u> <u>Activity Fund</u> <u>(21)</u>	<u>Public Purpose Trust</u> <u>(27)</u>	<u>Other Compt Approved</u> <u>(28)</u>	<u>Athletic / Activity</u> <u>(29)</u>
<b>Assets And Deferred Outflows Of Resources</b>					
<b>Assets</b>					
0100 Cash and Cash Equivalents	24,933,458				
0110 Investments					
0120 Taxes Receivable	1,285,693				
0130 Due From Other Funds	1,685,067				
0141 Due From Other Governments	4,102,641				
0142 State Revenue Receivable					
0143 Federal Revenue Receivable					
0145 Other Intergovernmental Revenue Receivable					
0146 Due from Primary Government					
0147 Due from Component Unit					
0150 Other Receivables	385,242				
0170 Inventories	120,212				
0180 Prepaid Expenses (Expenditures)	161,683				
0190 Other Current Assets					
<b>Total Assets</b>	<b>\$32,673,996</b>				
0910 Deferred Outflows of Resources					
<b>Total Assets And Deferred Outflows Of Resources</b>	<b>\$32,673,996</b>				

Amounts Expressed in Whole Dollars

<u>Capital Reserve (690.</u>	<u>Capital Reserve (1431)</u>	<u>Other Capital Projects</u>	<u>Debt Service</u>	<u>Permanent</u>
<u>1850)</u>	<u>(32)</u>	<u>Fund</u>	<u>(40)</u>	<u>(90)</u>
<u>(31)</u>		<u>(39)</u>		

**Assets And Deferred Outflows Of Resources**

**Assets**

0100	Cash and Cash Equivalents	1,523,467	23,706,883
0110	Investments		
0120	Taxes Receivable		
0130	Due From Other Funds		
0141	Due From Other Governments		
0142	State Revenue Receivable		
0143	Federal Revenue Receivable		
0145	Other Intergovernmental Revenue Receivable		
0146	Due from Primary Government		
0147	Due from Component Unit		
0150	Other Receivables		
0170	Inventories		
0180	Prepaid Expenses (Expenditures)		
0190	Other Current Assets		
<b>Total Assets</b>		<b>\$1,523,467</b>	<b>\$23,706,883</b>
0910	Deferred Outflows of Resources		
<b>Total Assets And Deferred Outflows Of Resources</b>		<b>\$1,523,467</b>	<b>\$23,706,883</b>

Amounts Expressed in Whole Dollars

**Total Governmental Funds**

**Assets And Deferred Outflows Of Resources**

<b>Assets</b>	
0100 Cash and Cash Equivalents	50,163,808
0110 Investments	
0120 Taxes Receivable	1,285,693
0130 Due From Other Funds	1,685,067
0141 Due From Other Governments	4,102,641
0142 State Revenue Receivable	
0143 Federal Revenue Receivable	
0145 Other Intergovernmental Revenue Receivable	
0146 Due from Primary Government	
0147 Due from Component Unit	
0150 Other Receivables	385,242
0170 Inventories	120,212
0180 Prepaid Expenses (Expenditures)	161,683
0190 Other Current Assets	
<b>Total Assets</b>	<b>\$57,904,346</b>
0910 Deferred Outflows of Resources	
<b>Total Assets And Deferred Outflows Of Resources</b>	<b>\$57,904,346</b>

Amounts Expressed in Whole Dollars

	<u>General Fund</u> <u>(10)</u>	<u>Student Sponsored</u> <u>Activity Fund</u> <u>(21)</u>	<u>Public Purpose Trust</u> <u>(27)</u>	<u>Other Compt Approved</u> <u>(28)</u>	<u>Athletic / Activity</u> <u>(29)</u>
<b>Liabilities And Deferred Inflows Of Resources And Fund Balances</b>					
<b>Liabilities</b>					
0400 Due to Other Funds	4,685				
0411 Due to Other Governments					
0412 Due to Primary Government					
0413 Due to Component Unit					
0420 Accounts Payable	895,312				
0430 Contracts Payable					
0440 Current Portion of Long-Term Debt					
0450 Short-Term Payables					
0461 Accrued Salaries and Benefits	6,027,955				
0462 Payroll Deductions and Withholding					
0480 Unearned Revenues					
0490 Other Current Liabilities	164,905				
<b>Total Liabilities</b>	<b>\$7,092,857</b>				
0950 Deferred Inflows of Resources	227,863				
<b>Fund Balances</b>					
0810 Nonspendable Fund Balance	281,895				
0820 Restricted Fund Balance					
0830 Committed Fund Balance	20,300,000				
0840 Assigned Fund Balance					
0850 Unassigned Fund Balance	4,771,381				
<b>Total Fund Balances</b>	<b>\$25,353,276</b>				
<b>Total Liabilities, Deferred Inflows Of Resources And Fund Balances</b>	<b>\$32,673,996</b>				

Amounts Expressed in Whole Dollars

<u>Capital Reserve (690.</u>	<u>Capital Reserve (1431)</u>	<u>Other Capital Projects</u>	<u>Debt Service</u>	<u>Permanent</u>
<u>1850)</u>	<u>(32)</u>	<u>Fund</u>	<u>(40)</u>	<u>(90)</u>
<u>(31)</u>		<u>(39)</u>		

**Liabilities And Deferred Inflows Of Resources And Fund Balances**

**Liabilities**

0400 Due to Other Funds			
0411 Due to Other Governments			
0412 Due to Primary Government			
0413 Due to Component Unit			
0420 Accounts Payable	74,971	893,658	
0430 Contracts Payable			
0440 Current Portion of Long-Term Debt			
0450 Short-Term Payables			
0461 Accrued Salaries and Benefits			
0462 Payroll Deductions and Withholding			
0480 Unearned Revenues			
0490 Other Current Liabilities			

<b>Total Liabilities</b>	<b>\$74,971</b>	<b>\$893,658</b>
--------------------------	-----------------	------------------

0950 Deferred Inflows of Resources

**Fund Balances**

0810 Nonspendable Fund Balance		
0820 Restricted Fund Balance	1,448,496	22,813,225
0830 Committed Fund Balance		
0840 Assigned Fund Balance		
0850 Unassigned Fund Balance		

<b>Total Fund Balances</b>	<b>\$1,448,496</b>	<b>\$22,813,225</b>
----------------------------	--------------------	---------------------

<b>Total Liabilities, Deferred Inflows Of Resources And Fund Balances</b>	<b>\$1,523,467</b>	<b>\$23,706,883</b>
---	--------------------	---------------------

Amounts Expressed in Whole Dollars

**Total Governmental Funds**

**Liabilities And Deferred Inflows Of Resources And Fund Balances**

**Liabilities**

0400 Due to Other Funds	4,685
0411 Due to Other Governments	
0412 Due to Primary Government	
0413 Due to Component Unit	
0420 Accounts Payable	1,863,941
0430 Contracts Payable	
0440 Current Portion of Long-Term Debt	
0450 Short-Term Payables	
0461 Accrued Salaries and Benefits	6,027,955
0462 Payroll Deductions and Withholding	
0480 Unearned Revenues	
0490 Other Current Liabilities	164,905

**Total Liabilities \$8,061,486**

0950 Deferred Inflows of Resources	227,863
------------------------------------	---------

**Fund Balances**

0810 Nonspendable Fund Balance	281,895
0820 Restricted Fund Balance	24,261,721
0830 Committed Fund Balance	20,300,000
0840 Assigned Fund Balance	
0850 Unassigned Fund Balance	4,771,381

**Total Fund Balances \$49,614,997**

**Total Liabilities, Deferred Inflows Of Resources And Fund Balances \$57,904,346**

Amounts Expressed in Whole Dollars	<u>General Fund</u> <u>(10)</u>	<u>Student Sponsored</u> <u>Activity Fund</u> <u>(21)</u>	<u>Public Purpose Trust</u> <u>(27)</u>	<u>Other Compt Approved</u> <u>(28)</u>	<u>Athletic / Activity</u> <u>(29)</u>
<b>Revenues</b>					
6000 Revenue from Local Sources	42,614,917				
7000 Revenue from State Sources	16,342,461				
8000 Revenue from Federal Sources	3,308,451				
<b>Total Revenues</b>	<b>\$62,265,829</b>				
<b>Expenditures</b>					
1000 Instruction	34,313,590				
2000 Support Services	17,414,150				
3000 Operation of Non-Instructional Services	1,402,996				
4000 Facilities Acquisition, Construction and Improvement Services					
5110 Debt Service	6,939,843				
5130 Refund of Prior Year Revenues / Receipts					
5140 Leases	827,884				
<b>Total Expenditures</b>	<b>\$60,898,463</b>				
<b>Excess (Deficiency) Of Revenues Over Expenditures</b>	<b>\$1,367,366</b>				
<b>Other Financing Sources (Uses)</b>					
9110 Face Value of Bonds Issued					
9120 Proceeds from Refunding of Bonds					
9130 Bond Premiums					
9200 Proceeds from Extended-Term Financing and Leases					
9300 Interfund Transfers - IN					
9400 Sale of or Compensation for Loss of Fixed Assets					
9710 Transfers from Component Units					
9720 Transfers from Primary Governments					
9910 Other Financing Sources Not Listed in the 9000 Series					
9990 Insurance Recoveries	48,813				
5120 Debt Service – Refunded Bonds					
5150 Bond Discounts					
5200 Interfund Transfers – Out	209,914				
5300 Transfers Out to Component Units/Primary Governments					
<b>Total Other Financing Sources (Uses)</b>	<b>(\$161,101)</b>				

Amounts Expressed in Whole Dollars	<u>Capital Reserve (690, 1850 (31)</u>	<u>Capital Reserve (1431 (32)</u>	<u>Other Capital Projects Fund (39)</u>	<u>Debt Service (40)</u>	<u>Permanent (90)</u>
<b>Revenues</b>					
6000 Revenue from Local Sources		412	33,916		
7000 Revenue from State Sources					
8000 Revenue from Federal Sources					
<b>Total Revenues</b>		<b>\$412</b>	<b>\$33,916</b>		
<b>Expenditures</b>					
1000 Instruction					
2000 Support Services		338,167	1,103,327		
3000 Operation of Non-Instructional Services					
4000 Facilities Acquisition, Construction and Improvement Services		265,360	22,115,228		
5110 Debt Service					
5130 Refund of Prior Year Revenues / Receipts					
5140 Leases					
<b>Total Expenditures</b>		<b>\$603,527</b>	<b>\$23,218,555</b>		
<b>Excess (Deficiency) Of Revenues Over Expenditures</b>		<b>(\$603,115)</b>	<b>(\$23,184,639)</b>		
<b>Other Financing Sources (Uses)</b>					
9110 Face Value of Bonds Issued			30,270,000		
9120 Proceeds from Refunding of Bonds					
9130 Bond Premiums			5,117,164		
9200 Proceeds from Extended-Term Financing and Leases			722,078		
9300 Interfund Transfers - IN		209,914			
9400 Sale of or Compensation for Loss of Fixed Assets					
9710 Transfers from Component Units					
9720 Transfers from Primary Governments					
9910 Other Financing Sources Not Listed in the 9000 Series					
9990 Insurance Recoveries					
5120 Debt Service – Refunded Bonds					
5150 Bond Discounts					
5200 Interfund Transfers – Out					
5300 Transfers Out to Component Units/Primary Governments					
<b>Total Other Financing Sources (Uses)</b>		<b>\$209,914</b>	<b>\$36,109,242</b>		

Amounts Expressed in Whole Dollars	<u>Total Governmental Funds</u>
<b>Revenues</b>	
6000 Revenue from Local Sources	42,649,245
7000 Revenue from State Sources	16,342,461
8000 Revenue from Federal Sources	3,308,451
<b>Total Revenues</b>	<b>\$62,300,157</b>
<b>Expenditures</b>	
1000 Instruction	34,313,590
2000 Support Services	18,855,644
3000 Operation of Non-Instructional Services	1,402,996
4000 Facilities Acquisition, Construction and Improvement Services	22,380,588
5110 Debt Service	6,939,843
5130 Refund of Prior Year Revenues / Receipts	
5140 Leases	827,884
<b>Total Expenditures</b>	<b>\$84,720,545</b>
<b>Excess (Deficiency) Of Revenues Over Expenditures</b>	<b>(\$22,420,388)</b>
<b>Other Financing Sources (Uses)</b>	
9110 Face Value of Bonds Issued	30,270,000
9120 Proceeds from Refunding of Bonds	
9130 Bond Premiums	5,117,164
9200 Proceeds from Extended-Term Financing and Leases	722,078
9300 Interfund Transfers - IN	209,914
9400 Sale of or Compensation for Loss of Fixed Assets	
9710 Transfers from Component Units	
9720 Transfers from Primary Governments	
9910 Other Financing Sources Not Listed in the 9000 Series	
9990 Insurance Recoveries	48,813
5120 Debt Service – Refunded Bonds	
5150 Bond Discounts	
5200 Interfund Transfers – Out	209,914
5300 Transfers Out to Component Units/Primary Governments	
<b>Total Other Financing Sources (Uses)</b>	<b>\$36,158,055</b>

Amounts Expressed in Whole Dollars	<u>General Fund</u> <u>(10)</u>	<u>Student Sponsored</u> <u>Activity Fund</u> <u>(21)</u>	<u>Public Purpose Trust</u> <u>(27)</u>	<u>Other Compt Approved</u> <u>(28)</u>	<u>Athletic / Activity</u> <u>(29)</u>
<b>Special And Extraordinary Items</b>					
9920 Special Items – Gains					
9930 Extraordinary Items – Gains					
5520 Special Items – Losses					
5530 Extraordinary Items – Losses					
<b>Net Change In Fund Balances</b>	<b>\$1,206,265</b>				
<b>Fund Balance</b>					
0001 Fund Balance - Beginning of Fiscal Year	24,147,011				
<b>Fund Balance - End Of Year</b>	<b>\$25,353,276</b>				

Amounts Expressed in Whole Dollars	<u>Capital Reserve (690.</u> <u>1850)</u> <u>(31)</u>	<u>Capital Reserve (1431)</u> <u>(32)</u>	<u>Other Capital Projects</u> <u>Fund</u> <u>(39)</u>	<u>Debt Service</u> <u>(40)</u>	<u>Permanent</u> <u>(90)</u>
<b>Special And Extraordinary Items</b>					
9920 Special Items – Gains					
9930 Extraordinary Items – Gains					
5520 Special Items – Losses					
5530 Extraordinary Items – Losses					
<b>Net Change In Fund Balances</b>		<b>(\$393,201)</b>	<b>\$12,924,603</b>		
<b>Fund Balance</b>					
0001 Fund Balance - Beginning of Fiscal Year		1,841,697	9,888,622		
<b>Fund Balance - End Of Year</b>		<b>\$1,448,496</b>	<b>\$22,813,225</b>		

Amounts Expressed in Whole Dollars	<u>Total Governmental Funds</u>
<b>Special And Extraordinary Items</b>	
9920 Special Items – Gains	
9930 Extraordinary Items – Gains	
5520 Special Items – Losses	
5530 Extraordinary Items – Losses	
<b>Net Change In Fund Balances</b>	<b>\$13,737,667</b>
<b>Fund Balance</b>	
0001 Fund Balance - Beginning of Fiscal Year	35,877,330
<b>Fund Balance - End Of Year</b>	<b>\$49,614,997</b>

Amounts Expressed in Whole Dollars	<u>Food Service</u> <u>(51)</u>	<u>Child Care</u> <u>Operations</u> <u>(52)</u>	<u>Other Enterprise</u> <u>(58)</u>	<u>TOTAL</u>	<u>Internal Service</u> <u>(60)</u>
<b>Assets And Deferred Outflows Of Resources</b>					
<b>Current Assets</b>					
0100 Cash and Cash Equivalents	63,849			63,849	1,486,335
0110 Investments					
0130 Due From Other Funds					
0141 Due From Other Governments					
0142 State Revenue Receivable					
0143 Federal Revenue Receivable					
0146 Due from Primary Government					
0147 Due from Component Unit					
0150 Other Receivables					
0170 Inventories	81,880			81,880	
0180 Prepaid Expenses (Expenditures)					
0190 Other Current Assets					
<b>Total Current Assets</b>	<b>\$145,729</b>			<b>\$145,729</b>	<b>\$1,486,335</b>
<b>Noncurrent Assets</b>					
0211 Land					
0212 Site Improvements (Net)					
0220 Buildings and Building Improvements (Net)					
0230 Machinery, Equipment and Furniture (Net)	69,913			69,913	
0250 Construction in Progress					
0260 Long Term Prepayments					
0290 Other Noncurrent Assets					
<b>Total Noncurrent Assets</b>	<b>\$69,913</b>			<b>\$69,913</b>	
0910 Deferred Outflows of Resources	291,271			291,271	
<b>Total Assets And Deferred Outflows Of Resources</b>	<b>\$506,913</b>			<b>\$506,913</b>	<b>\$1,486,335</b>

Amounts Expressed in Whole Dollars	<u>Food Service</u> <u>(51)</u>	<u>Child Care</u> <u>Operations</u> <u>(52)</u>	<u>Other Enterprise</u> <u>(58)</u>	<u>TOTAL</u>	<u>Internal Service</u> <u>(60)</u>
<b>Liabilities And Deferred Inflows Of Resources And Net Position</b>					
<b>Current Liabilities</b>					
0400 Due to Other Funds	121,619			121,619	1,558,373
0411 Due to Other Governments					
0413 Due to Component Unit					
0420 Accounts Payable	6,757			6,757	484,268
0430 Contracts Payable					
0440 Current Portion of Long-Term Debt					
0450 Short-Term Payables					
0461 Accrued Salaries and Benefits	2,397			2,397	
0462 Payroll Deductions and Withholding					
0480 Unearned Revenues	63,982			63,982	
0490 Other Current Liabilities					
<b>Total Current Liabilities</b>	<b>\$194,755</b>			<b>\$194,755</b>	<b>\$2,042,641</b>
<b>Noncurrent Liabilities</b>					
0510 Bonds Payable					
0520 Extended-Term Financing Agreements Payable					
0530 Lease Obligations					
0540 Accumulated Compensated Absences					
0550 Authority Lease Obligations					
0560 Other Post-Employment Benefits (OPEB)	1,454,480			1,454,480	
0570 Net Pension Liability	84,237			84,237	
0599 Other Noncurrent Liabilities					
<b>Total Noncurrent Liabilities</b>	<b>\$1,538,717</b>			<b>\$1,538,717</b>	
<b>Total Liabilities</b>	<b>\$1,733,472</b>			<b>\$1,733,472</b>	<b>\$2,042,641</b>
0950 Deferred Inflows of Resources	274,211			274,211	
<b>Net Position</b>					
0791 Net Investment in Capital Assets	69,913			69,913	
0008 Restricted Net Position (0792 – 0798)					
0799 Unrestricted Net Position	(1,570,683)			(1,570,683)	(556,306)
<b>Total Net Position</b>	<b>(\$1,500,770)</b>			<b>(\$1,500,770)</b>	<b>(\$556,306)</b>
<b>Total Liabilities And Deferred Inflows Of Resources And Net Position</b>	<b>\$506,913</b>			<b>\$506,913</b>	<b>\$1,486,335</b>

Amounts Expressed in Whole Dollars	<u>Food Service</u> <u>(51)</u>	<u>Child Care Operations</u> <u>(52)</u>	<u>Other Enterprise</u> <u>(58)</u>	<u>TOTAL</u>	<u>Internal Service</u> <u>(60)</u>
<b>Operating Revenues</b>					
6600 Food Service Revenue	359,763			359,763	
0071 Charges for Services					4,853,804
0072 Other Operating Revenue					
<b>Total Operating Revenues</b>	<b>\$359,763</b>			<b>\$359,763</b>	<b>\$4,853,804</b>
<b>Operating Expenses</b>					
100 Personnel Services – Salaries	639,271			639,271	
200 Personnel Services – Employee Benefits	308,723			308,723	5,463,635
300 Purchased Professional and Technical Services					
400 Purchased Property Services	39,842			39,842	
500 Other Purchased Services	2,135			2,135	
600 Supplies	900,532			900,532	
740 Depreciation	16,036			16,036	
810 Dues and Fees					
880 Refunds of Prior Years' Receipts					
890 Miscellaneous Expenditures	1,044			1,044	
<b>Total Operating Expenses</b>	<b>\$1,907,583</b>			<b>\$1,907,583</b>	<b>\$5,463,635</b>
<b>Operating Income (Loss)</b>	<b>(\$1,547,820)</b>			<b>(\$1,547,820)</b>	<b>(\$609,831)</b>
<b>Non Operating Revenues (Expenses)</b>					
6500 Earnings on Investments	15			15	1,595
6920 Contributions and Donations from Private Sources	16,388			16,388	
6930 Gains or Losses on Sale of Fixed Assets					
6991 Refunds of a Prior Year Expenditure					
7000 Revenue from State Sources	170,737			170,737	
8000 Revenue from Federal Sources	1,442,985			1,442,985	
9990 Insurance Recoveries					
820 Claims and Judgments Against the LEA					
830 Interest					
<b>TOTAL Non Operating Revenues (Expenses)</b>	<b>\$1,630,125</b>			<b>\$1,630,125</b>	<b>\$1,595</b>
<b>Income (Loss) Before Contributions And Transfers</b>	<b>\$82,305</b>			<b>\$82,305</b>	<b>(\$608,236)</b>

Amounts Expressed in Whole Dollars	<u>Food Service</u> <u>(51)</u>	<u>Child Care Operations</u> <u>(52)</u>	<u>Other Enterprise</u> <u>(58)</u>	<u>TOTAL</u>	<u>Internal Service</u> <u>(60)</u>
<b>Contributions, Transfers, and Special and Extraordinary Items</b>					
5200 Interfund Transfers – Out					
5300 Transfers Out to Component Units/Primary Governments					
5520 Special Items – Losses					
5530 Extraordinary Items – Losses					
9300 Interfund Transfers - IN					
9500 Capital Contributions					
9700 Transfers IN From Component Units/Primary Governments					
9920 Special Items – Gains					
9930 Extraordinary Items – Gains					
<b>Change In Net Position</b>	<b>\$82,305</b>			<b>\$82,305</b>	<b>(\$608,236)</b>
0002 Net Position - Beginning of Fiscal Year	(1,583,076)			(1,583,076)	51,930
0003 Accounting Changes / Residual Equity Transfers					
<b>Net Position - End Of Year</b>	<b>(\$1,500,771)</b>			<b>(\$1,500,771)</b>	<b>(\$556,306)</b>

Amounts Expressed in Whole Dollars	<u>Food Service</u> <u>(51)</u>	<u>Child Care Operations</u> <u>(52)</u>	<u>Other Enterprise</u> <u>(58)</u>	<u>TOTAL</u>	<u>Internal Service(60)</u>
<b>Cash Flows From Operating Activities</b>					
0011 Cash Receipts From Users	348,597			348,597	
0012 Cash Receipts From Assessments Made to Other Funds					5,467,835
0013 Cash Receipts From Earnings on Investments					
0014 Cash Receipts From Other Operating Revenue					
0015 Cash Payments To Employees For Services	1,069,123			1,069,123	
0016 Cash Payments For Insurance Claims					5,467,835
0017 Cash Payments To Suppliers For Goods and Services	803,587			803,587	
0018 Cash Payments For Other Operating Expenses	1,044			1,044	
<b>Net Cash Provided By (Used For) Operating Activities</b>	<b>(\$1,525,157)</b>			<b>(\$1,525,157)</b>	<b>\$0</b>
<b>Cash Flows From Non-Capital Financing Activities</b>					
0021 Receipts From Local Sources - 6000	3,498			3,498	
0022 Receipts From State Sources - 7000	170,737			170,737	
0023 Receipts From Federal Sources -8000	1,301,875			1,301,875	
0024 Notes and Loans Received (Repaid)					
0025 Interest Paid on Notes/Loans - 5100-830					
0026 Operating Transfers In (Out)/Residual Equity Trans					
0027 Operating Transfers In (Out) Primary Government / Comp Unit					
0028 Receipts From Refund of Prior Year Expenditures - 6991					
0029 Special and Extraordinary Gains (losses)					
0030 Receipts from Insurance Recoveries -9990					
<b>Net Cash Prov By (Used for) Non-Capital Financing Activities</b>	<b>\$1,476,110</b>			<b>\$1,476,110</b>	
<b>Cash Flows From Capital and Related Financing Activities</b>					
0031 Payments For Fac Acq, Const, and Imp - 4000					
0032 Gain / (Loss) on Sale of Fixed Assets - 6930					
0033 Proceeds From Extended Term Financing - 9200					
0034 Principal Paid on Financing Agreements					
0035 Interest Paid on Financing Agreements - 5100-830					
0036 (Inc) Dec in Contributed Capital					
<b>Net Cash Prov By (Used for) Capital and Related Financing Activities</b>					
<b>Cash Flows From Investing Activities</b>					
0041 Earnings on Investments - 6500	15			15	1,595
0042 Purchase of Inv Securities / Deposits to Inv Pools					
0043 Receipts From Investment Pool Withdrawals					
0044 Proceeds from Sale and Maturity of Inv Securities					

LEA : 113364403 Manheim Central SD

Printed 2/3/2023 11:30:01 AM

0045 Loans Received (Paid)

<b>Net Cash Prov By (Used for) Investing Activities</b>	<b>\$15</b>	<b>\$15</b>	<b>\$1,595</b>
---	-------------	-------------	----------------

	<u>Food Service</u> <u>(51)</u>	<u>Child Care Operations</u> <u>(52)</u>	<u>Other Enterprise</u> <u>(58)</u>	<u>TOTAL</u>	<u>Internal Service</u> <u>(60)</u>
<b>Net Increase (Decrease) in Cash Flows</b>	<b>(49,032)</b>			<b>(49,032)</b>	<b>1,595</b>
0004 Cash and Cash Equivalents Beginning of Year	112,881			112,881	1,484,740
<b>Cash and Cash Equivalents at Year End</b>	<b>\$63,849</b>			<b>\$63,849</b>	<b>\$1,486,335</b>
<hr/>					
<b>Reconciliation of Operating Income (Loss) To Net Cash Provided by (Used For) Operating Activities</b>					
0005 Operating Income (Loss) per REP	(1,547,820)			(1,547,820)	(609,831)
<b>Adjustments</b>					
0051 Depreciation and Net Amortization	16,036			16,036	
0052 Provision for Uncollectible Accounts					
0053 Other Adjustments	141,110			141,110	
<b>Effect of Changes in Assets, Liabilities, Deferred Outflows and Deferred Inflows</b>					
0054 (Inc) Dec In Accounts Receivable (0120-0150)					
0055 Advances to Other Funds (0160)	(27,121)			(27,121)	614,031
0056 (Inc) Dec in Inventories (0170)	23,425			23,425	
0057 (Inc) Dec in Prepaid Expenses (0180)					
0058 (Inc) Dec in Other Current or Noncurrent Assets					
0064 Deferred Outflows (0910)	(20,966)			(20,966)	
0059 Inc (Dec) in Accounts Payable (0400-0450)	4,357			4,357	
0060 Inc (Dec) in Accrued Salaries/Benefits (0461)	(418)			(418)	
0065 Inc (Dec) in Net Pension Liabilities (0570)	(268,191)			(268,191)	(4,200)
0066 Inc (Dec) in Other Postemp Benefit Oblig (0560)	8,543			8,543	
0061 Inc (Dec) in Payroll Deductions/Withholding (0462)					
0062 Inc (Dec) in Unearned Revenue (0480)	(41,137)			(41,137)	
0063 Inc (Dec) in Other Current or Noncurrent Liabilities					
0067 Deferred Inflows (0950)	187,024			187,024	
<b>Total Adjustments</b>	<b>\$22,662</b>			<b>\$22,662</b>	<b>\$609,831</b>
<b>Cash Provided By (Used for) Total</b>	<b>(\$1,525,158)</b>			<b>(\$1,525,158)</b>	

COMBINED STATEMENT OF CASH FLOWS  
SCHEDULE OF NONCASH INVESTING, CAPITAL, AND FINANCING ACTIVITIES

Explanation of Transaction and Balance Sheet Effect	Amount
Donated Commodities	141,110
<b>Total</b>	<b>\$141,110</b>

LEA : 113364403 Manheim Central SD

Printed 2/3/2023 11:30:06 AM

Amounts Expressed in Whole Dollars

Private Purpose Trust  
(71)

Investment Trust  
(72)

Pension Trust  
(73)

Student Activity Custodial  
(81)

**Assets And Deferred Outflows Of Resources**

**Assets**

0100 Cash and Cash Equivalents	931,172			159,404
0110 Investments				
0130 Due From Other Funds				
0140 Due from Other Governments, Primary Government and Component Units				
0150 Other Receivables				
0170 Inventories				
0180 Prepaid Expenses (Expenditures)				
0190 Other Current Assets				
0220 Buildings and Building Improvements (Net)				
0230 Machinery, Equipment and Furniture (Net)				
<b>Total Assets</b>	<b>\$931,172</b>			<b>\$159,404</b>
0910 Deferred Outflows of Resources				
<b>Total Assets And Deferred Outflows Of Resources</b>	<b>\$931,172</b>			<b>\$159,404</b>

LEA : 113364403 Manheim Central SD

Printed 2/3/2023 11:30:06 AM

Amounts Expressed in Whole Dollars

Other Custodial      Fiduciary Component Units      Total Fiduciary Funds  
(89)                                      (98)

**Assets And Deferred Outflows Of Resources**

**Assets**

0100 Cash and Cash Equivalents			1,090,576
0110 Investments			
0130 Due From Other Funds			
0140 Due from Other Governments, Primary Government and Component Units			
0150 Other Receivables			
0170 Inventories			
0180 Prepaid Expenses (Expenditures)			
0190 Other Current Assets			
0220 Buildings and Building Improvements (Net)			
0230 Machinery, Equipment and Furniture (Net)			

**Total Assets** **\$1,090,576**

0910 Deferred Outflows of Resources

**Total Assets And Deferred Outflows Of Resources** **\$1,090,576**

LEA : 113364403 Manheim Central SD

Printed 2/3/2023 11:30:06 AM

Amounts Expressed in Whole Dollars	<u>Private Purpose Trust</u> (71)	<u>Investment Trust</u> (72)	<u>Pension Trust</u> (73)	<u>Student Activity Custodial</u> (81)
<b>Liabilities, Deferred Inflows Of Resources And Net Position</b>				
<b>Liabilities</b>				
0400 Due to Other Funds				
0410 Due to Other Governments, Primary Government and Component Units				
0420 Accounts Payable				
0430 Contracts Payable				
0450 Short-Term Payables				
0460 Payroll Accruals and Withholdings				
0480 Unearned Revenues				
0490 Other Current Liabilities				
<b>Total Liabilities</b>				
0950 Deferred Inflows of Resources				
<b>Net Position</b>				
0791 Net Investment in Capital Assets				
0009 Restricted Net Position (0792 – 0798)		931,172		159,404
0799 Unrestricted Net Position				
<b>Total Net Position</b>		<b>\$931,172</b>		<b>\$159,404</b>
<b>Total Liabilities, Deferred Inflows Of Resources And Net Position</b>		<b>\$931,172</b>		<b>\$159,404</b>

LEA : 113364403 Manheim Central SD

Printed 2/3/2023 11:30:06 AM

Amounts Expressed in Whole Dollars	<u>Other Custodial</u> <u>(89)</u>	<u>Fiduciary Component Units</u> <u>(98)</u>	<u>Total Fiduciary Funds</u>
<b>Liabilities, Deferred Inflows Of Resources And Net Position</b>			
<b>Liabilities</b>			
0400 Due to Other Funds			
0410 Due to Other Governments, Primary Government and Component Units			
0420 Accounts Payable			
0430 Contracts Payable			
0450 Short-Term Payables			
0460 Payroll Accruals and Withholdings			
0480 Unearned Revenues			
0490 Other Current Liabilities			
<b>Total Liabilities</b>			
0950 Deferred Inflows of Resources			
<b>Net Position</b>			
0791 Net Investment in Capital Assets			
0009 Restricted Net Position (0792 – 0798)			1,090,576
0799 Unrestricted Net Position			
<b>Total Net Position</b>			<b>\$1,090,576</b>
<b>Total Liabilities, Deferred Inflows Of Resources And Net Position</b>			<b>\$1,090,576</b>

Amounts Expressed in Whole Dollars	<u>Private Purpose Trust</u> <u>(71)</u>	<u>Investment Trust</u> <u>(72)</u>	<u>Pension Trust</u> <u>(73)</u>	<u>Student Activity</u> <u>Custodial</u> <u>(81)</u>	<u>Other Custodial</u> <u>(89)</u>	<u>Fiduciary Component</u> <u>Units</u> <u>(98)</u>
<b>Additions</b>						
0091 Gifts and Contributions	1,012			155,528		
0095 Net Investment Earnings						
0092 Other Additions						
<b>Deductions</b>						
0093 Scholarships Awarded	39,275					
0094 Other Deductions				170,066		
<b>Change In Net Position</b>	<b>(\$38,263)</b>			<b>(\$14,538)</b>		
0006 Net Position – Beginning of Fiscal Year	969,435			173,942		
0007 Net Position Held in Trust for Pension Benefits						
<b>Net Position - End of Fiscal Year</b>	<b>\$931,172</b>			<b>\$159,404</b>		

Amounts Expressed in Whole Dollars	<u>Total Fiduciary Funds</u>
<b>Additions</b>	
0091 Gifts and Contributions	156,540
0095 Net Investment Earnings	
0092 Other Additions	
<b>Deductions</b>	
0093 Scholarships Awarded	39,275
0094 Other Deductions	170,066
<b>Change in Net Position</b>	<b>(\$52,801)</b>
0006 Net Position – Beginning of Fiscal Year	1,143,377
0007 Net Position Held in Trust for Pension Benefits	
<b>Net Position - End of Fiscal Year</b>	<b>\$1,090,576</b>

	<u>Revenue Reported In Current Year</u>	<u>Current Year Tax Accrual</u>	<u>Prior Year Tax Accrual</u>	<u>Taxes Collected In Current Year</u>
<b><u>Revenue from Local Sources</u></b>				
6111 Current Real Estate Taxes	34,205,180.00			34,205,180.00
6112 Interim Real Estate Taxes	282,651.00	10,373.00	230.00	272,508.00
6113 Public Utility Realty Taxes	37,337.00			37,337.00
6114 Payments in Lieu of Current Taxes - State / Local	221,613.00			221,613.00
6151 Current Act 511 Earned Income Taxes	4,473,824.00	789,896.13	843,902.10	4,527,829.97
6153 Current Act 511 Real Estate Transfer Taxes	909,512.00	160,606.00	348,521.00	1,097,427.00
6411 Delinquent Real Estate Taxes	1,126,001.00	96,956.00	113,293.00	1,142,338.00
6500 Earnings on Investments	89,518.00			
6700 Revenues from LEA Activities	73,674.00			
6831 Federal Revenue Received from Other Pennsylvania Public LEAs	226,680.00			
6832 Federal IDEA Revenue Received as Pass Through	539,105.00			
6833 Federal ARRA IDEA Revenue Received as Pass Through	4,501.00			
6910 Rentals	10,765.00			
6944 Receipts from Other LEAs in Pennsylvania - Education	226,662.00			
6999 Other Revenues Not Specified Above	187,894.00			
<b>TOTAL Revenue from Local Sources</b>	<b>\$42,614,917.00</b>	<b>\$1,057,831.13</b>	<b>\$1,305,946.10</b>	<b>\$41,504,232.97</b>

**Revenue Reported  
In Current Year**

**Revenue from State Sources**

7111 Basic Education Funding-Formula	7,574,235.00		
7112 Basic Education Funding-Social Security	811,224.00		
7160 Tuition for Orphans Subsidy	67,411.00		
7220 Vocational Education	54,681.00		
7250 Migratory Children	280.00		
7271 Special Education funds for School-Aged Pupils	1,699,368.00		
7311 Pupil Transportation Subsidy	799,275.00		
7312 Nonpublic and Charter School Pupil Transportation Subsidy	76,615.00		
7320 Rental and Sinking Fund Payments / Building Reimbursement Subsidy	162,526.00		
7330 Health Services (Medical, Dental, Nurse, Act 25)	56,840.00		
7340 State Property Tax Reduction Allocation	829,030.00		
7505 Ready to Learn Block Grant	301,665.00		
7820 State Share of Retirement Contributions	3,909,311.00		
<b>TOTAL Revenue from State Sources</b>	<b>\$16,342,461.00</b>		

**Revenue Reported  
In Current Year**

**Revenue from Federal Sources**

8514 NCLB, Title I - Improving the Academic Achievement of the Disadvantaged	617,948.00			
8515 NCLB, Title II - Preparing, Training and Recruiting High Quality Teachers and Principals	107,782.00			
8517 NCLB, Title IV - 21St Century Schools	30,969.00			
8742 Governor's Emergency Education Relief Fund (GEER)	18,074.00			
8743 ESSER II - Elementary and Secondary School Emergency Relief Fund	1,262,418.00			
8744 ARP ESSER - Elementary and Secondary School Emergency Relief Fund	670,788.00			
8751 ARP ESSER Learning Loss	52,174.00			
8753 ARP ESSER Afterschool Programs	34,152.00			
8810 School-Based Access Medicaid Reimbursement Program (SBAP) Reimbursements (Access)	504,060.00			
8820 Medical Assistance Reimbursement for Administrative Claiming (Quarterly) Program	10,086.00			
<b>TOTAL Revenue from Federal Sources</b>	<b>\$3,308,451.00</b>			

	<u>Revenue Reported In Current Year</u>			
<b>Other Financing Sources</b>				
9990 Insurance Recoveries	48,813.40			
<b>TOTAL Other Financing Sources</b>	<b>\$48,813.40</b>			
<b>TOTAL FROM ALL SOURCES</b>	<b>\$62,314,642.40</b>	<b>\$1,057,831.13</b>	<b>\$1,305,946.10</b>	<b>\$41,504,232.97</b>

LEA : 113364403 Manheim Central SD

Printed 2/3/2023 11:30:13 AM

	<u>General Fund (10)</u>	<u>Student Sponsored Activity Fund (21)</u>	<u>Public Purpose Trust (27)</u>	<u>Other Compt Approved (28)</u>	<u>Athletic / Activity (29)</u>	<u>Capital Reserve (690, 1850) (31)</u>
<b>6000 Revenue from Local Sources</b>						
6111 Current Real Estate Taxes	34,205,180.00					
6112 Interim Real Estate Taxes	282,651.00					
6113 Public Utility Realty Taxes	37,337.00					
6114 Payments in Lieu of Current Taxes - State / Local	221,613.00					
6151 Current Act 511 Earned Income Taxes	4,473,824.00					
6153 Current Act 511 Real Estate Transfer Taxes	909,512.00					
6411 Delinquent Real Estate Taxes	1,126,001.00					
6500 Earnings on Investments	89,518.00					
6700 Revenues from LEA Activities	73,674.00					
6831 Federal Revenue Received from Other Pennsylvania Public LEAs	226,680.00					
6832 Federal IDEA Revenue Received as Pass Through	539,105.00					
6833 Federal ARRA IDEA Revenue Received as Pass Through	4,501.00					
6910 Rentals	10,765.00					
6944 Receipts from Other LEAs in Pennsylvania - Education	226,662.00					
6999 Other Revenues Not Specified Above	187,894.00					
<b>6000 Total Revenue from Local Sources</b>	<b>\$42,614,917.00</b>					
<b>7000 Revenue from State Sources</b>						
7111 Basic Education Funding-Formula	7,574,235.00					
7112 Basic Education Funding-Social Security	811,224.00					
7160 Tuition for Orphans Subsidy	67,411.00					
7220 Vocational Education	54,681.00					
7250 Migratory Children	280.00					
7271 Special Education funds for School-Aged Pupils	1,699,368.00					
7311 Pupil Transportation Subsidy	799,275.00					
7312 Nonpublic and Charter School Pupil Transportation Subsidy	76,615.00					
7320 Rental and Sinking Fund Payments / Building Reimbursement Subsidy	162,526.00					
7330 Health Services (Medical, Dental, Nurse, Act 25)	56,840.00					
7340 State Property Tax Reduction Allocation	829,030.00					
7505 Ready to Learn Block Grant	301,665.00					
7820 State Share of Retirement Contributions	3,909,311.00					
<b>7000 Total Revenue from State Sources</b>	<b>\$16,342,461.00</b>					
<b>8000 Revenue from Federal Sources</b>						
8514 NCLB, Title I - Improving the Academic Achievement of the Disadvantaged	617,948.00					
8515 NCLB, Title II - Preparing, Training and Recruiting High Quality Teachers and Principals	107,782.00					

LEA : 113364403 Manheim Central SD

Printed 2/3/2023 11:30:13 AM

	<u>Capital Reserve</u> <u>(1431) (32)</u>	<u>Other Capital</u> <u>Projects Fund (39)</u>	<u>Debt Service (40)</u>	<u>Permanent (90)</u>	<u>Total</u>
<b>6000 Revenue from Local Sources</b>					
6111 Current Real Estate Taxes					34,205,180.00
6112 Interim Real Estate Taxes					282,651.00
6113 Public Utility Realty Taxes					37,337.00
6114 Payments in Lieu of Current Taxes - State / Local					221,613.00
6151 Current Act 511 Earned Income Taxes					4,473,824.00
6153 Current Act 511 Real Estate Transfer Taxes					909,512.00
6411 Delinquent Real Estate Taxes					1,126,001.00
6500 Earnings on Investments	411.86	33,915.91			123,845.77
6700 Revenues from LEA Activities					73,674.00
6831 Federal Revenue Received from Other Pennsylvania Public LEAs					226,680.00
6832 Federal IDEA Revenue Received as Pass Through					539,105.00
6833 Federal ARRA IDEA Revenue Received as Pass Through					4,501.00
6910 Rentals					10,765.00
6944 Receipts from Other LEAs in Pennsylvania - Education					226,662.00
6999 Other Revenues Not Specified Above					187,894.00
<b>6000 Total Revenue from Local Sources</b>	<b>\$411.86</b>	<b>\$33,915.91</b>			<b>\$42,649,244.77</b>
<b>7000 Revenue from State Sources</b>					
7111 Basic Education Funding-Formula					7,574,235.00
7112 Basic Education Funding-Social Security					811,224.00
7160 Tuition for Orphans Subsidy					67,411.00
7220 Vocational Education					54,681.00
7250 Migratory Children					280.00
7271 Special Education funds for School-Aged Pupils					1,699,368.00
7311 Pupil Transportation Subsidy					799,275.00
7312 Nonpublic and Charter School Pupil Transportation Subsidy					76,615.00
7320 Rental and Sinking Fund Payments / Building Reimbursement Subsidy					162,526.00
7330 Health Services (Medical, Dental, Nurse, Act 25)					56,840.00
7340 State Property Tax Reduction Allocation					829,030.00
7505 Ready to Learn Block Grant					301,665.00
7820 State Share of Retirement Contributions					3,909,311.00
<b>7000 Total Revenue from State Sources</b>					<b>\$16,342,461.00</b>
<b>8000 Revenue from Federal Sources</b>					
8514 NCLB, Title I - Improving the Academic Achievement of the Disadvantaged					617,948.00
8515 NCLB, Title II - Preparing, Training and Recruiting High Quality Teachers and Principals					107,782.00

	<u>General Fund (10)</u>	<u>Student Sponsored Activity Fund (21)</u>	<u>Public Purpose Trust (27)</u>	<u>Other Compt Approved (28)</u>	<u>Athletic / Activity (29)</u>	<u>Capital Reserve (690, 1850) (31)</u>
<b>8000 Revenue from Federal Sources</b>						
8517 NCLB, Title IV - 21st Century Schools	30,969.00					
8742 Governor's Emergency Education Relief Fund (GEER)	18,074.00					
8743 ESSER II - Elementary and Secondary School Emergency Relief Fund	1,262,418.00					
8744 ARP ESSER - Elementary and Secondary School Emergency Relief Fund	670,788.00					
8751 ARP ESSER Learning Loss	52,174.00					
8753 ARP ESSER Afterschool Programs	34,152.00					
8810 School-Based Access Medicaid Reimbursement Program (SBAP) Reimbursements (Access)	504,060.00					
8820 Medical Assistance Reimbursement for Administrative Claiming (Quarterly) Program	10,086.00					
<b>8000 Total Revenue from Federal Sources</b>	<b>\$3,308,451.00</b>					
<b>9000 Other Financing Sources</b>						
9110 Face Value of Bonds Issued						
9130 Bond Premiums						
9220 Leases						
9310 General Fund Transfers						
9990 Insurance Recoveries	48,813.40					
<b>9000 Total Other Financing Sources</b>	<b>\$48,813.40</b>					
<b>Total From All Sources</b>	<b>\$62,314,642.40</b>					

	<u>Capital Reserve</u> <u>(1431) (32)</u>	<u>Other Capital</u> <u>Projects Fund (39)</u>	<u>Debt Service (40)</u>	<u>Permanent (90)</u>	<u>Total</u>
<b>8000 Revenue from Federal Sources</b>					
8517 NCLB, Title IV - 21st Century Schools					30,969.00
8742 Governor's Emergency Education Relief Fund (GEER)					18,074.00
8743 ESSER II - Elementary and Secondary School Emergency Relief Fund					1,262,418.00
8744 ARP ESSER - Elementary and Secondary School Emergency Relief Fund					670,788.00
8751 ARP ESSER Learning Loss					52,174.00
8753 ARP ESSER Afterschool Programs					34,152.00
8810 School-Based Access Medicaid Reimbursement Program (SBAP) Reimbursements (Access)					504,060.00
8820 Medical Assistance Reimbursement for Administrative Claiming (Quarterly) Program					10,086.00
<b>8000 Total Revenue from Federal Sources</b>					<b>\$3,308,451.00</b>
<b>9000 Other Financing Sources</b>					
9110 Face Value of Bonds Issued		30,270,000.00			30,270,000.00
9130 Bond Premiums		5,117,163.85			5,117,163.85
9220 Leases		722,078.00			722,078.00
9310 General Fund Transfers	209,914.43				209,914.43
9990 Insurance Recoveries					48,813.40
<b>9000 Total Other Financing Sources</b>	<b>\$209,914.43</b>	<b>\$36,109,241.85</b>			<b>\$36,367,969.68</b>
<b>Total From All Sources</b>	<b>\$210,326.29</b>	<b>\$36,143,157.76</b>			<b>\$98,668,126.45</b>

	<u>General Fund (10)</u>	<u>Student Sponsored Activity Fund (21)</u>	<u>Public Purpose Trust (27)</u>	<u>Other Compt Approved (28)</u>	<u>Athletic / Activity (29)</u>	<u>Capital Reserve (690. 1850) (31)</u>
Revenue from Local Sources	42,614,917.00					
Revenue from State Sources	16,342,461.00					
Revenue from Federal Sources	3,308,451.00					
Other Financing Sources	48,813.40					
<b>Total From All Sources</b>	<b>\$62,314,642.40</b>					

	<u>Capital Reserve (1431)</u> <u>(32)</u>	<u>Other Capital Projects</u> <u>Fund (39)</u>	<u>Debt Service (40)</u>	<u>Permanent (90)</u>	<u>Total</u>
Revenue from Local Sources	411.86	33,915.91			42,649,244.77
Revenue from State Sources					16,342,461.00
Revenue from Federal Sources					3,308,451.00
Other Financing Sources	209,914.43	36,109,241.85			36,367,969.68
<b>Total From All Sources</b>	<b>\$210,326.29</b>	<b>\$36,143,157.76</b>			<b>\$98,668,126.45</b>

**General Fund (10)**

	<u>Total</u>
<b>1000 Instruction</b>	
<b>100 Personnel Services – Salaries</b>	
100 Personnel Services – Salaries	15,929,657.40
<b>Total Personnel Services – Salaries</b>	<b>\$15,929,657.40</b>
<b>200 Personnel Services – Employee Benefits</b>	
210 Group Insurance – Contracted Provider	28,016.62
220 Social Security Contributions	1,181,347.67
230 PSERS Retirement Contributions	5,553,815.23
260 Workers’ Compensation	104,587.66
270 Group Insurance – Self-Insurance	2,838,576.92
299 All Other Employee Benefits	183,398.49
<b>Total Personnel Services – Employee Benefits</b>	<b>\$9,889,742.59</b>
<b>300 Purchased Professional and Technical Services</b>	
322 Professional Educational Services – Ius	2,693,328.70
329 Professional Educational Services – Other	473,209.91
350 Security / Safety Services	99.28
360 Employee Training and Development Services	2,877.82
390 Other Purchased Professional and Technical Services	140,203.54
<b>Total Purchased Professional and Technical Services</b>	<b>\$3,309,719.25</b>
<b>400 Purchased Property Services</b>	
430 Repairs and Maintenance Services	2,623.20
440 Rentals	12,599.39
<b>Total Purchased Property Services</b>	<b>\$15,222.59</b>
<b>500 Other Purchased Services</b>	
510 Student Transportation Services	84,605.27
550 Printing and Binding	4,783.59
561 Tuition To Other School Districts Within the State	119,546.00
562 Tuition To Pennsylvania Charter Schools	2,336,355.47
563 Tuition To Nonpublic Schools	26,979.71
564 Tuition To Career and Technology Centers	1,049,896.34
568 Tuition To Private Residential Rehabilitative Institutions (PRRI) [In-State] and Detention Centers	146,439.91
580 Travel	1,275.87
594 IU Payment By Withholding for Institutionalized Children’s Programs – Special Classes	171,285.74
<b>Total Other Purchased Services</b>	<b>\$3,941,167.90</b>
<b>600 Supplies</b>	
610 General Supplies	546,051.64
620 Energy	444.05
640 Books and Periodicals	130,030.33
650 Supplies & Fees – Technology Related	521,690.34
<b>Total Supplies</b>	<b>\$1,198,216.36</b>
<b>700 Property</b>	
752 Capital Equipment – Original and Additional	17,383.62
<b>Total Property</b>	<b>\$17,383.62</b>

General Fund (10)

<b>1000 Instruction</b>	<b><u>Total</u></b>
<b>800 <u>Other Objects</u></b>	
810 Dues and Fees	12,479.97
<b>Total Other Objects</b>	<b>\$12,479.97</b>
<b>Total 1000 Instruction</b>	<b>\$34,313,589.68</b>

**General Fund (10)**

**1100 Regular Programs – Elementary / Secondary**

	<u>Elementary</u>	<u>Secondary</u>	<u>Federal</u>	<u>Total</u>
<b>100 Personnel Services – Salaries</b>				
100 Personnel Services – Salaries	6,079,510.48	5,896,031.60	721,009.89	12,696,551.97
<b>Total Personnel Services – Salaries</b>	<b>\$6,079,510.48</b>	<b>\$5,896,031.60</b>	<b>\$721,009.89</b>	<b>\$12,696,551.97</b>
<b>200 Personnel Services – Employee Benefits</b>				
210 Group Insurance – Contracted Provider	10,677.98	10,161.91	957.64	21,797.53
220 Social Security Contributions	458,565.37	439,668.22	42,419.45	940,653.04
230 PSERS Retirement Contributions	2,152,155.65	2,067,291.09	199,329.10	4,418,775.84
260 Workers' Compensation	40,715.21	39,333.66	3,679.88	83,728.75
270 Group Insurance – Self-Insurance	1,051,389.10	1,038,620.66	81,106.04	2,171,115.80
299 All Other Employee Benefits	91,699.24	91,699.25		183,398.49
<b>Total Personnel Services – Employee Benefits</b>	<b>\$3,805,202.55</b>	<b>\$3,686,774.79</b>	<b>\$327,492.11</b>	<b>\$7,819,469.45</b>
<b>300 Purchased Professional and Technical Services</b>				
322 Professional Educational Services – Ius	10,111.62	10,111.64		20,223.26
329 Professional Educational Services – Other	274,850.85	175,814.47	20,665.00	471,330.32
390 Other Purchased Professional and Technical Services	33,174.34	31,597.40		64,771.74
<b>Total Purchased Professional and Technical Services</b>	<b>\$318,136.81</b>	<b>\$217,523.51</b>	<b>\$20,665.00</b>	<b>\$556,325.32</b>
<b>400 Purchased Property Services</b>				
430 Repairs and Maintenance Services		2,623.20		2,623.20
440 Rentals		12,599.39		12,599.39
<b>Total Purchased Property Services</b>		<b>\$15,222.59</b>		<b>\$15,222.59</b>
<b>500 Other Purchased Services</b>				
510 Student Transportation Services	10,876.60	60,592.45		71,469.05
550 Printing and Binding	2,391.80	2,391.79		4,783.59
561 Tuition To Other School Districts Within the State	26,022.42	23,900.95		49,923.37
562 Tuition To Pennsylvania Charter Schools	580,995.63	977,126.27		1,558,121.90
568 Tuition To Private Residential Rehabilitative Institutions (PRRI) [In-State] and Detention Centers	495.00	495.00		990.00
580 Travel	235.02	542.02		777.04
<b>Total Other Purchased Services</b>	<b>\$621,016.47</b>	<b>\$1,065,048.48</b>		<b>\$1,686,064.95</b>
<b>600 Supplies</b>				
610 General Supplies	132,715.18	162,554.45	130,992.03	426,261.66
640 Books and Periodicals	62,965.29	67,065.04		130,030.33
650 Supplies & Fees – Technology Related	69,391.86	136,400.14	300,295.62	506,087.62
<b>Total Supplies</b>	<b>\$265,072.33</b>	<b>\$366,019.63</b>	<b>\$431,287.65</b>	<b>\$1,062,379.61</b>
<b>700 Property</b>				
752 Capital Equipment – Original and Additional		17,383.62		17,383.62
<b>Total Property</b>		<b>\$17,383.62</b>		<b>\$17,383.62</b>
<b>800 Other Objects</b>				
810 Dues and Fees	869.63	8,294.09		9,163.72
<b>Total Other Objects</b>	<b>\$869.63</b>	<b>\$8,294.09</b>		<b>\$9,163.72</b>
<b>Total 1100 Regular Programs – Elementary / Secondary</b>	<b>\$11,089,808.27</b>	<b>\$11,272,298.31</b>	<b>\$1,500,454.65</b>	<b>\$23,862,561.23</b>

**General Fund (10)**

**1110 Regular Programs**

	<u>Elementary</u>	<u>Secondary</u>	<u>Federal</u>	<u>Total</u>
<b>100 Personnel Services – Salaries</b>				
100 Personnel Services – Salaries	6,079,510.48	5,896,031.60	73,623.37	12,049,165.45
<b>Total Personnel Services – Salaries</b>	<b>\$6,079,510.48</b>	<b>\$5,896,031.60</b>	<b>\$73,623.37</b>	<b>\$12,049,165.45</b>
<b>200 Personnel Services – Employee Benefits</b>				
210 Group Insurance – Contracted Provider	10,677.98	10,161.91		20,839.89
220 Social Security Contributions	458,565.37	439,668.22	1,948.49	900,182.08
230 PSERS Retirement Contributions	2,152,155.65	2,067,291.09	9,154.67	4,228,601.41
260 Workers' Compensation	40,715.21	39,333.66		80,048.87
270 Group Insurance – Self-Insurance	1,051,389.10	1,038,620.66		2,090,009.76
299 All Other Employee Benefits	91,699.24	91,699.25		183,398.49
<b>Total Personnel Services – Employee Benefits</b>	<b>\$3,805,202.55</b>	<b>\$3,686,774.79</b>	<b>\$11,103.16</b>	<b>\$7,503,080.50</b>
<b>300 Purchased Professional and Technical Services</b>				
322 Professional Educational Services – Ius	10,111.62	10,111.64		20,223.26
329 Professional Educational Services – Other	274,850.85	175,814.47		450,665.32
390 Other Purchased Professional and Technical Services	33,174.34	31,597.40		64,771.74
<b>Total Purchased Professional and Technical Services</b>	<b>\$318,136.81</b>	<b>\$217,523.51</b>		<b>\$535,660.32</b>
<b>400 Purchased Property Services</b>				
430 Repairs and Maintenance Services		2,623.20		2,623.20
440 Rentals		12,599.39		12,599.39
<b>Total Purchased Property Services</b>		<b>\$15,222.59</b>		<b>\$15,222.59</b>
<b>500 Other Purchased Services</b>				
510 Student Transportation Services	10,876.60	60,592.45		71,469.05
550 Printing and Binding	2,391.80	2,391.79		4,783.59
561 Tuition To Other School Districts Within the State	26,022.42	23,900.95		49,923.37
562 Tuition To Pennsylvania Charter Schools	580,995.63	977,126.27		1,558,121.90
568 Tuition To Private Residential Rehabilitative Institutions (PRRI) [In-State] and Detention Centers	495.00	495.00		990.00
580 Travel	235.02	542.02		777.04
<b>Total Other Purchased Services</b>	<b>\$621,016.47</b>	<b>\$1,065,048.48</b>		<b>\$1,686,064.95</b>
<b>600 Supplies</b>				
610 General Supplies	132,715.18	162,554.45	95,357.33	390,626.96
640 Books and Periodicals	62,965.29	67,065.04		130,030.33
650 Supplies & Fees – Technology Related	69,391.86	136,400.14	300,295.62	506,087.62
<b>Total Supplies</b>	<b>\$265,072.33</b>	<b>\$366,019.63</b>	<b>\$395,652.95</b>	<b>\$1,026,744.91</b>
<b>700 Property</b>				
752 Capital Equipment – Original and Additional		17,383.62		17,383.62
<b>Total Property</b>		<b>\$17,383.62</b>		<b>\$17,383.62</b>
<b>800 Other Objects</b>				
810 Dues and Fees	869.63	8,294.09		9,163.72
<b>Total Other Objects</b>	<b>\$869.63</b>	<b>\$8,294.09</b>		<b>\$9,163.72</b>
<b>Total 1110 Regular Programs</b>	<b>\$11,089,808.27</b>	<b>\$11,272,298.31</b>	<b>\$480,379.48</b>	<b>\$22,842,486.06</b>

**General Fund (10)**

	<u>Elementary</u>	<u>Secondary</u>	<u>Federal</u>	<u>Total</u>
<b>1190 Federally-Funded Regular Programs</b>				
<b>100 Personnel Services – Salaries</b>				
100 Personnel Services – Salaries			647,386.52	647,386.52
<b>Total Personnel Services – Salaries</b>			<b>\$647,386.52</b>	<b>\$647,386.52</b>
<b>200 Personnel Services – Employee Benefits</b>				
210 Group Insurance – Contracted Provider			957.64	957.64
220 Social Security Contributions			40,470.96	40,470.96
230 PSERS Retirement Contributions			190,174.43	190,174.43
260 Workers' Compensation			3,679.88	3,679.88
270 Group Insurance – Self-Insurance			81,106.04	81,106.04
<b>Total Personnel Services – Employee Benefits</b>			<b>\$316,388.95</b>	<b>\$316,388.95</b>
<b>300 Purchased Professional and Technical Services</b>				
329 Professional Educational Services – Other			20,665.00	20,665.00
<b>Total Purchased Professional and Technical Services</b>			<b>\$20,665.00</b>	<b>\$20,665.00</b>
<b>600 Supplies</b>				
610 General Supplies			35,634.70	35,634.70
<b>Total Supplies</b>			<b>\$35,634.70</b>	<b>\$35,634.70</b>
<b>Total 1190 Federally-Funded Regular Programs</b>			<b>\$1,020,075.17</b>	<b>\$1,020,075.17</b>

**General Fund (10)**

1200 Special Programs – Elementary / Secondary	<u>Elementary</u>	<u>Secondary</u>	<u>Federal</u>	<u>Total</u>
<b>100 Personnel Services – Salaries</b>				
100 Personnel Services – Salaries	1,460,698.07	1,264,644.46	119,374.42	2,844,716.95
<b>Total Personnel Services – Salaries</b>	<b>\$1,460,698.07</b>	<b>\$1,264,644.46</b>	<b>\$119,374.42</b>	<b>\$2,844,716.95</b>
<b>200 Personnel Services – Employee Benefits</b>				
210 Group Insurance – Contracted Provider	3,232.90	2,490.76		5,723.66
220 Social Security Contributions	116,809.02	93,110.21		209,919.23
230 PSERS Retirement Contributions	549,766.91	440,643.81		990,410.72
260 Workers' Compensation	10,415.64	8,392.12		18,807.76
270 Group Insurance – Self-Insurance	339,833.85	263,825.52		603,659.37
<b>Total Personnel Services – Employee Benefits</b>	<b>\$1,020,058.32</b>	<b>\$808,462.42</b>		<b>\$1,828,520.74</b>
<b>300 Purchased Professional and Technical Services</b>				
322 Professional Educational Services – lus	1,336,552.56	1,336,552.88		2,673,105.44
329 Professional Educational Services – Other	252.80	252.80		505.60
350 Security / Safety Services		99.28		99.28
390 Other Purchased Professional and Technical Services	32,420.81	32,420.89		64,841.70
<b>Total Purchased Professional and Technical Services</b>	<b>\$1,369,226.17</b>	<b>\$1,369,325.85</b>		<b>\$2,738,552.02</b>
<b>500 Other Purchased Services</b>				
510 Student Transportation Services	6,168.26	5,715.40		11,883.66
561 Tuition To Other School Districts Within the State	39,288.82	30,333.81		69,622.63
562 Tuition To Pennsylvania Charter Schools	355,363.18	422,870.39		778,233.57
563 Tuition To Nonpublic Schools	13,489.85	13,489.86		26,979.71
568 Tuition To Private Residential Rehabilitative Institutions (PRRI) [In-State] and Detention Centers	58,429.06	58,429.10		116,858.16
580 Travel	416.25	25.98		442.23
594 IU Payment By Withholding for Institutionalized Children's Programs – Special Classes	85,642.87	85,642.87		171,285.74
<b>Total Other Purchased Services</b>	<b>\$558,798.29</b>	<b>\$616,507.41</b>		<b>\$1,175,305.70</b>
<b>600 Supplies</b>				
610 General Supplies	5,851.47	8,464.20	16,411.45	30,727.12
620 Energy		444.05		444.05
650 Supplies & Fees – Technology Related	7,801.36	7,801.36		15,602.72
<b>Total Supplies</b>	<b>\$13,652.83</b>	<b>\$16,709.61</b>	<b>\$16,411.45</b>	<b>\$46,773.89</b>
<b>Total 1200 Special Programs – Elementary / Secondary</b>	<b>\$4,422,433.68</b>	<b>\$4,075,649.75</b>	<b>\$135,785.87</b>	<b>\$8,633,869.30</b>

**General Fund (10)**

**1210 Life Skills Support**

	<u>Elementary</u>	<u>Secondary</u>	<u>Federal</u>	<u>Total</u>
<b>100 Personnel Services – Salaries</b>				
100 Personnel Services – Salaries	101,356.06	108,750.06		210,106.12
<b>Total Personnel Services – Salaries</b>	<b>\$101,356.06</b>	<b>\$108,750.06</b>		<b>\$210,106.12</b>
<b>200 Personnel Services – Employee Benefits</b>				
210 Group Insurance – Contracted Provider	198.20	144.24		342.44
220 Social Security Contributions	7,572.54	8,137.18		15,709.72
230 PSERS Retirement Contributions	35,463.29	38,050.58		73,513.87
260 Workers' Compensation	651.22	693.14		1,344.36
270 Group Insurance – Self-Insurance	16,054.32	16,054.56		32,108.88
<b>Total Personnel Services – Employee Benefits</b>	<b>\$59,939.57</b>	<b>\$63,079.70</b>		<b>\$123,019.27</b>
<b>600 Supplies</b>				
610 General Supplies	77.45	878.95		956.40
<b>Total Supplies</b>	<b>\$77.45</b>	<b>\$878.95</b>		<b>\$956.40</b>
<b>Total 1210 Life Skills Support</b>	<b>\$161,373.08</b>	<b>\$172,708.71</b>		<b>\$334,081.79</b>

**General Fund (10)**

	<u>Elementary</u>	<u>Secondary</u>	<u>Federal</u>	<u>Total</u>
<b>1220 Sensory Support</b>				
<b>100 Personnel Services – Salaries</b>				
100 Personnel Services – Salaries	257,975.97	47,885.60		305,861.57
<b>Total Personnel Services – Salaries</b>	<b>\$257,975.97</b>	<b>\$47,885.60</b>		<b>\$305,861.57</b>
<b>200 Personnel Services – Employee Benefits</b>				
210 Group Insurance – Contracted Provider	460.08	97.68		557.76
220 Social Security Contributions	19,393.26	3,607.58		23,000.84
230 PSERS Retirement Contributions	90,545.49	16,788.04		107,333.53
260 Workers' Compensation	1,791.50	322.86		2,114.36
270 Group Insurance – Self-Insurance	37,995.90	6,309.66		44,305.56
<b>Total Personnel Services – Employee Benefits</b>	<b>\$150,186.23</b>	<b>\$27,125.82</b>		<b>\$177,312.05</b>
<b>600 Supplies</b>				
610 General Supplies	549.25	549.25		1,098.50
<b>Total Supplies</b>	<b>\$549.25</b>	<b>\$549.25</b>		<b>\$1,098.50</b>
<b>Total 1220 Sensory Support</b>	<b>\$408,711.45</b>	<b>\$75,560.67</b>		<b>\$484,272.12</b>

**General Fund (10)**

**1230 Emotional Support**

	<u>Elementary</u>	<u>Secondary</u>	<u>Federal</u>	<u>Total</u>
<b>100 Personnel Services – Salaries</b>				
100 Personnel Services – Salaries	52,718.20	225,508.09		278,226.29
<b>Total Personnel Services – Salaries</b>	<b>\$52,718.20</b>	<b>\$225,508.09</b>		<b>\$278,226.29</b>
<b>200 Personnel Services – Employee Benefits</b>				
210 Group Insurance – Contracted Provider	110.30	470.70		581.00
220 Social Security Contributions	3,880.89	16,401.97		20,282.86
230 PSERS Retirement Contributions	18,450.19	78,907.93		97,358.12
260 Workers' Compensation	355.70	1,519.60		1,875.30
270 Group Insurance – Self-Insurance	10,793.53	55,394.65		66,188.18
<b>Total Personnel Services – Employee Benefits</b>	<b>\$33,590.61</b>	<b>\$152,694.85</b>		<b>\$186,285.46</b>
<b>Total 1230 Emotional Support</b>	<b>\$86,308.81</b>	<b>\$378,202.94</b>		<b>\$464,511.75</b>

**General Fund (10)**

	<u>Elementary</u>	<u>Secondary</u>	<u>Federal</u>	<u>Total</u>
<b>1240 Academic Support</b>				
<b>100 Personnel Services – Salaries</b>				
100 Personnel Services – Salaries	896,275.52	788,661.49	119,374.42	1,804,311.43
<b>Total Personnel Services – Salaries</b>	<b>\$896,275.52</b>	<b>\$788,661.49</b>	<b>\$119,374.42</b>	<b>\$1,804,311.43</b>
<b>200 Personnel Services – Employee Benefits</b>				
210 Group Insurance – Contracted Provider	1,911.12	1,478.07		3,389.19
220 Social Security Contributions	75,140.52	57,950.36		133,090.88
230 PSERS Retirement Contributions	354,129.28	275,857.73		629,987.01
260 Workers' Compensation	6,646.09	5,252.43		11,898.52
270 Group Insurance – Self-Insurance	206,065.65	169,505.47		375,571.12
<b>Total Personnel Services – Employee Benefits</b>	<b>\$643,892.66</b>	<b>\$510,044.06</b>		<b>\$1,153,936.72</b>
<b>300 Purchased Professional and Technical Services</b>				
350 Security / Safety Services		99.28		99.28
<b>Total Purchased Professional and Technical Services</b>		<b>\$99.28</b>		<b>\$99.28</b>
<b>500 Other Purchased Services</b>				
510 Student Transportation Services	827.38	374.49		1,201.87
580 Travel	416.25	25.98		442.23
<b>Total Other Purchased Services</b>	<b>\$1,243.63</b>	<b>\$400.47</b>		<b>\$1,644.10</b>
<b>600 Supplies</b>				
610 General Supplies	4,548.85	6,360.00		10,908.85
620 Energy		444.05		444.05
<b>Total Supplies</b>	<b>\$4,548.85</b>	<b>\$6,804.05</b>		<b>\$11,352.90</b>
<b>Total 1240 Academic Support</b>	<b>\$1,545,960.66</b>	<b>\$1,306,009.35</b>	<b>\$119,374.42</b>	<b>\$2,971,344.43</b>

**General Fund (10)**

	<u>Elementary</u>	<u>Secondary</u>	<u>Federal</u>	<u>Total</u>
<b>1241 Learning Support – Public</b>				
<b>100 Personnel Services – Salaries</b>				
100 Personnel Services – Salaries	828,277.56	722,907.38	119,374.42	1,670,559.36
<b>Total Personnel Services – Salaries</b>	<b>\$828,277.56</b>	<b>\$722,907.38</b>	<b>\$119,374.42</b>	<b>\$1,670,559.36</b>
<b>200 Personnel Services – Employee Benefits</b>				
210 Group Insurance – Contracted Provider	1,804.20	1,338.63		3,142.83
220 Social Security Contributions	70,098.40	53,164.30		123,262.70
230 PSERS Retirement Contributions	330,536.72	252,894.79		583,431.51
260 Workers' Compensation	6,143.99	4,776.25		10,920.24
270 Group Insurance – Self-Insurance	199,733.13	157,190.59		356,923.72
<b>Total Personnel Services – Employee Benefits</b>	<b>\$608,316.44</b>	<b>\$469,364.56</b>		<b>\$1,077,681.00</b>
<b>300 Purchased Professional and Technical Services</b>				
350 Security / Safety Services		99.28		99.28
<b>Total Purchased Professional and Technical Services</b>		<b>\$99.28</b>		<b>\$99.28</b>
<b>500 Other Purchased Services</b>				
510 Student Transportation Services		142.92		142.92
580 Travel	416.25	25.98		442.23
<b>Total Other Purchased Services</b>	<b>\$416.25</b>	<b>\$168.90</b>		<b>\$585.15</b>
<b>600 Supplies</b>				
610 General Supplies	2,887.64	4,723.65		7,611.29
620 Energy		444.05		444.05
<b>Total Supplies</b>	<b>\$2,887.64</b>	<b>\$5,167.70</b>		<b>\$8,055.34</b>
<b>Total 1241 Learning Support – Public</b>	<b>\$1,439,897.89</b>	<b>\$1,197,707.82</b>	<b>\$119,374.42</b>	<b>\$2,756,980.13</b>

**General Fund (10)**

	<u>Elementary</u>	<u>Secondary</u>	<u>Federal</u>	<u>Total</u>
<b>1243 Gifted Support</b>				
<b>100 Personnel Services – Salaries</b>				
100 Personnel Services – Salaries	67,997.96	65,754.11		133,752.07
<b>Total Personnel Services – Salaries</b>	<b>\$67,997.96</b>	<b>\$65,754.11</b>		<b>\$133,752.07</b>
<b>200 Personnel Services – Employee Benefits</b>				
210 Group Insurance – Contracted Provider	106.92	139.44		246.36
220 Social Security Contributions	5,042.12	4,786.06		9,828.18
230 PSERS Retirement Contributions	23,592.56	22,962.94		46,555.50
260 Workers' Compensation	502.10	476.18		978.28
270 Group Insurance – Self-Insurance	6,332.52	12,314.88		18,647.40
<b>Total Personnel Services – Employee Benefits</b>	<b>\$35,576.22</b>	<b>\$40,679.50</b>		<b>\$76,255.72</b>
<b>500 Other Purchased Services</b>				
510 Student Transportation Services	827.38	231.57		1,058.95
<b>Total Other Purchased Services</b>	<b>\$827.38</b>	<b>\$231.57</b>		<b>\$1,058.95</b>
<b>600 Supplies</b>				
610 General Supplies	1,661.21	1,636.35		3,297.56
<b>Total Supplies</b>	<b>\$1,661.21</b>	<b>\$1,636.35</b>		<b>\$3,297.56</b>
<b>Total 1243 Gifted Support</b>	<b>\$106,062.77</b>	<b>\$108,301.53</b>		<b>\$214,364.30</b>

General Fund (10)

1260 Physical Support

300 Purchased Professional and Technical Services

390 Other Purchased Professional and Technical Services

**Total Purchased Professional and Technical Services**

**Total 1260 Physical Support**

Elementary

Secondary

Federal

Total

32,420.81

32,420.89

64,841.70

**\$32,420.81**

**\$32,420.89**

**\$64,841.70**

**\$32,420.81**

**\$32,420.89**

**\$64,841.70**

**General Fund (10)**

	<u>Elementary</u>	<u>Secondary</u>	<u>Federal</u>	<u>Total</u>
<b>1290 Special Programs - Other Support</b>				
<b>100 Personnel Services – Salaries</b>				
100 Personnel Services – Salaries	152,372.32	93,839.22		246,211.54
<b>Total Personnel Services – Salaries</b>	<b>\$152,372.32</b>	<b>\$93,839.22</b>		<b>\$246,211.54</b>
<b>200 Personnel Services – Employee Benefits</b>				
210 Group Insurance – Contracted Provider	553.20	300.07		853.27
220 Social Security Contributions	10,821.81	7,013.12		17,834.93
230 PSERS Retirement Contributions	51,178.66	31,039.53		82,218.19
260 Workers' Compensation	971.13	604.09		1,575.22
270 Group Insurance – Self-Insurance	68,924.45	16,561.18		85,485.63
<b>Total Personnel Services – Employee Benefits</b>	<b>\$132,449.25</b>	<b>\$55,517.99</b>		<b>\$187,967.24</b>
<b>300 Purchased Professional and Technical Services</b>				
322 Professional Educational Services – lus	1,336,552.56	1,336,552.88		2,673,105.44
329 Professional Educational Services – Other	252.80	252.80		505.60
<b>Total Purchased Professional and Technical Services</b>	<b>\$1,336,805.36</b>	<b>\$1,336,805.68</b>		<b>\$2,673,611.04</b>
<b>500 Other Purchased Services</b>				
510 Student Transportation Services	5,340.88	5,340.91		10,681.79
561 Tuition To Other School Districts Within the State	39,288.82	30,333.81		69,622.63
562 Tuition To Pennsylvania Charter Schools	355,363.18	422,870.39		778,233.57
563 Tuition To Nonpublic Schools	13,489.85	13,489.86		26,979.71
568 Tuition To Private Residential Rehabilitative Institutions (PRRI) [In-State] and Detention Centers	58,429.06	58,429.10		116,858.16
594 IU Payment By Withholding for Institutionalized Children’s Programs – Special Classes	85,642.87	85,642.87		171,285.74
<b>Total Other Purchased Services</b>	<b>\$557,554.66</b>	<b>\$616,106.94</b>		<b>\$1,173,661.60</b>
<b>600 Supplies</b>				
610 General Supplies	675.92	676.00	16,411.45	17,763.37
650 Supplies & Fees – Technology Related	7,801.36	7,801.36		15,602.72
<b>Total Supplies</b>	<b>\$8,477.28</b>	<b>\$8,477.36</b>	<b>\$16,411.45</b>	<b>\$33,366.09</b>
<b>Total 1290 Special Programs - Other Support</b>	<b>\$2,187,658.87</b>	<b>\$2,110,747.19</b>	<b>\$16,411.45</b>	<b>\$4,314,817.51</b>

**General Fund (10)**

**1300 Vocational Education**

**100 Personnel Services – Salaries**

	<u>Elementary</u>	<u>Secondary</u>	<u>Federal</u>	<u>Total</u>
100 Personnel Services – Salaries		266,134.52		266,134.52
<b>Total Personnel Services – Salaries</b>		<b>\$266,134.52</b>		<b>\$266,134.52</b>

**200 Personnel Services – Employee Benefits**

210 Group Insurance – Contracted Provider		353.28		353.28
220 Social Security Contributions		19,853.58		19,853.58
230 PSERS Retirement Contributions		92,503.46		92,503.46
260 Workers' Compensation		1,747.72		1,747.72
270 Group Insurance – Self-Insurance		46,195.92		46,195.92
<b>Total Personnel Services – Employee Benefits</b>		<b>\$160,653.96</b>		<b>\$160,653.96</b>

**500 Other Purchased Services**

510 Student Transportation Services		1,252.56		1,252.56
564 Tuition To Career and Technology Centers		1,049,896.34		1,049,896.34
<b>Total Other Purchased Services</b>		<b>\$1,051,148.90</b>		<b>\$1,051,148.90</b>

**600 Supplies**

610 General Supplies		11,422.88		11,422.88
<b>Total Supplies</b>		<b>\$11,422.88</b>		<b>\$11,422.88</b>

**800 Other Objects**

810 Dues and Fees		3,316.25		3,316.25
<b>Total Other Objects</b>		<b>\$3,316.25</b>		<b>\$3,316.25</b>

**Total 1300 Vocational Education**

		<b>\$1,492,676.51</b>		<b>\$1,492,676.51</b>
--	--	-----------------------	--	-----------------------

**General Fund (10)**

	<u>Elementary</u>	<u>Secondary</u>	<u>Federal</u>	<u>Total</u>
<b>1400 Other Instructional Programs – Elementary / Secondary</b>				
<b>100 Personnel Services – Salaries</b>				
100 Personnel Services – Salaries		1,465.40	74,358.54	75,823.94
<b>Total Personnel Services – Salaries</b>		<b>\$1,465.40</b>	<b>\$74,358.54</b>	<b>\$75,823.94</b>
<b>200 Personnel Services – Employee Benefits</b>				
220 Social Security Contributions	538.71	645.00	6,518.80	7,702.51
230 PSERS Retirement Contributions	2,570.60	3,082.60	30,493.83	36,147.03
<b>Total Personnel Services – Employee Benefits</b>	<b>\$3,109.31</b>	<b>\$3,727.60</b>	<b>\$37,012.63</b>	<b>\$43,849.54</b>
<b>300 Purchased Professional and Technical Services</b>				
329 Professional Educational Services – Other			1,373.99	1,373.99
390 Other Purchased Professional and Technical Services		10,590.10		10,590.10
<b>Total Purchased Professional and Technical Services</b>		<b>\$10,590.10</b>	<b>\$1,373.99</b>	<b>\$11,964.09</b>
<b>500 Other Purchased Services</b>				
568 Tuition To Private Residential Rehabilitative Institutions (PRRI) [In-State] and Detention Centers	14,295.85	14,295.90		28,591.75
580 Travel	28.30	28.30		56.60
<b>Total Other Purchased Services</b>	<b>\$14,324.15</b>	<b>\$14,324.20</b>		<b>\$28,648.35</b>
<b>600 Supplies</b>				
610 General Supplies			43,493.59	43,493.59
<b>Total Supplies</b>			<b>\$43,493.59</b>	<b>\$43,493.59</b>
<b>Total 1400 Other Instructional Programs – Elementary / Secondary</b>	<b>\$17,433.46</b>	<b>\$30,107.30</b>	<b>\$156,238.75</b>	<b>\$203,779.51</b>

**General Fund (10)**

	<u>Elementary</u>	<u>Secondary</u>	<u>Federal</u>	<u>Total</u>
<b>1420 Summer School</b>				
<b>100 Personnel Services – Salaries</b>				
100 Personnel Services – Salaries			33,314.31	33,314.31
<b>Total Personnel Services – Salaries</b>			<b>\$33,314.31</b>	<b>\$33,314.31</b>
<b>200 Personnel Services – Employee Benefits</b>				
220 Social Security Contributions	538.71	538.70	3,456.82	4,534.23
230 PSERS Retirement Contributions	2,570.60	2,570.59	16,157.28	21,298.47
<b>Total Personnel Services – Employee Benefits</b>	<b>\$3,109.31</b>	<b>\$3,109.29</b>	<b>\$19,614.10</b>	<b>\$25,832.70</b>
<b>300 Purchased Professional and Technical Services</b>				
329 Professional Educational Services – Other			1,373.99	1,373.99
<b>Total Purchased Professional and Technical Services</b>			<b>\$1,373.99</b>	<b>\$1,373.99</b>
<b>600 Supplies</b>				
610 General Supplies			43,493.59	43,493.59
<b>Total Supplies</b>			<b>\$43,493.59</b>	<b>\$43,493.59</b>
<b>Total 1420 Summer School</b>	<b>\$3,109.31</b>	<b>\$3,109.29</b>	<b>\$97,795.99</b>	<b>\$104,014.59</b>

**General Fund (10)**

	<u>Elementary</u>	<u>Secondary</u>	<u>Federal</u>	<u>Total</u>
<b>1430 Homebound Instruction</b>				
<b>100 Personnel Services – Salaries</b>				
100 Personnel Services – Salaries		1,465.40		1,465.40
<b>Total Personnel Services – Salaries</b>		<b>\$1,465.40</b>		<b>\$1,465.40</b>
<b>200 Personnel Services – Employee Benefits</b>				
220 Social Security Contributions		106.30		106.30
230 PSERS Retirement Contributions		512.01		512.01
<b>Total Personnel Services – Employee Benefits</b>		<b>\$618.31</b>		<b>\$618.31</b>
<b>300 Purchased Professional and Technical Services</b>				
390 Other Purchased Professional and Technical Services		10,590.10		10,590.10
<b>Total Purchased Professional and Technical Services</b>		<b>\$10,590.10</b>		<b>\$10,590.10</b>
<b>500 Other Purchased Services</b>				
580 Travel	28.30	28.30		56.60
<b>Total Other Purchased Services</b>	<b>\$28.30</b>	<b>\$28.30</b>		<b>\$56.60</b>
<b>Total 1430 Homebound Instruction</b>	<b>\$28.30</b>	<b>\$12,702.11</b>		<b>\$12,730.41</b>

General Fund (10)

	<u>Elementary</u>	<u>Secondary</u>	<u>Federal</u>	<u>Total</u>
<b>1440 Alternative Regular Education Programs</b>				
<b>500 Other Purchased Services</b>				
568 Tuition To Private Residential Rehabilitative Institutions (PRRI) [In-State] and Detention Centers	14,295.85	14,295.90		28,591.75
<b>Total Other Purchased Services</b>	<b>\$14,295.85</b>	<b>\$14,295.90</b>		<b>\$28,591.75</b>
<b>Total 1440 Alternative Regular Education Programs</b>	<b>\$14,295.85</b>	<b>\$14,295.90</b>		<b>\$28,591.75</b>

General Fund (10)

	<u>Elementary</u>	<u>Secondary</u>	<u>Federal</u>	<u>Total</u>
<b>1442 Alternative Education Programs</b>				
<b>500 Other Purchased Services</b>				
568 Tuition To Private Residential Rehabilitative Institutions (PRRI) [In-State] and Detention Centers	14,295.85	14,295.90		28,591.75
<b>Total Other Purchased Services</b>	<b>\$14,295.85</b>	<b>\$14,295.90</b>		<b>\$28,591.75</b>
<b>Total 1442 Alternative Education Programs</b>	<b>\$14,295.85</b>	<b>\$14,295.90</b>		<b>\$28,591.75</b>

General Fund (10)

	<u>Elementary</u>	<u>Secondary</u>	<u>Federal</u>	<u>Total</u>
<b>1450 Instructional Programs Outside the Established School Day</b>				
<b>100 Personnel Services – Salaries</b>				
100 Personnel Services – Salaries			41,044.23	41,044.23
<b>Total Personnel Services – Salaries</b>			<b>\$41,044.23</b>	<b>\$41,044.23</b>
<b>200 Personnel Services – Employee Benefits</b>				
220 Social Security Contributions			3,061.98	3,061.98
230 PSERS Retirement Contributions			14,336.55	14,336.55
<b>Total Personnel Services – Employee Benefits</b>			<b>\$17,398.53</b>	<b>\$17,398.53</b>
<b>Total 1450 Instructional Programs Outside the Established School Day</b>			<b>\$58,442.76</b>	<b>\$58,442.76</b>

General Fund (10)

1500 Nonpublic School Programs

Elementary

Secondary

Federal

Total

300 Purchased Professional and Technical Services

360 Employee Training and Development Services

2,877.82

2,877.82

**Total Purchased Professional and Technical Services**

**\$2,877.82**

**\$2,877.82**

600 Supplies

610 General Supplies

27,126.75

27,262.22

**Total Supplies**

**\$27,126.75**

**\$27,262.22**

**Total 1500 Nonpublic School Programs**

**\$30,004.57**

**\$30,140.04**

General Fund (10)

1800 Pre-Kindergarten

Elementary

Secondary

Federal

Total

100 Personnel Services – Salaries

100 Personnel Services – Salaries

46,430.02

**Total Personnel Services – Salaries**

**\$46,430.02**

200 Personnel Services – Employee Benefits

210 Group Insurance – Contracted Provider

142.15

220 Social Security Contributions

3,219.31

230 PSERS Retirement Contributions

15,978.18

260 Workers' Compensation

303.43

270 Group Insurance – Self-Insurance

17,605.83

**Total Personnel Services – Employee Benefits**

**\$37,248.90**

600 Supplies

610 General Supplies

6,884.17

**Total Supplies**

**\$6,884.17**

**Total 1800 Pre-Kindergarten**

**\$90,563.09**

General Fund (10)

1801 Pre-K Instruction

Elementary

Secondary

Federal

Total

100 Personnel Services – Salaries

100 Personnel Services – Salaries

46,430.02

**Total Personnel Services – Salaries**

**\$46,430.02**

200 Personnel Services – Employee Benefits

210 Group Insurance – Contracted Provider

142.15

220 Social Security Contributions

3,219.31

230 PSERS Retirement Contributions

15,978.18

260 Workers' Compensation

303.43

270 Group Insurance – Self-Insurance

17,605.83

**Total Personnel Services – Employee Benefits**

**\$37,248.90**

600 Supplies

610 General Supplies

6,884.17

**Total Supplies**

**\$6,884.17**

**Total 1801 Pre-K Instruction**

**\$90,563.09**

General Fund (10)

2000 Support Services

Total

100 Personnel Services – Salaries

100 Personnel Services – Salaries 6,075,064.86

**Total Personnel Services – Salaries \$6,075,064.86**

200 Personnel Services – Employee Benefits

210 Group Insurance – Contracted Provider 41,308.10

220 Social Security Contributions 444,526.48

230 PSERS Retirement Contributions 2,100,876.23

240 Tuition Reimbursement 194,227.65

260 Workers' Compensation 38,690.49

270 Group Insurance – Self-Insurance 1,185,001.16

299 All Other Employee Benefits 24,170.97

**Total Personnel Services – Employee Benefits \$4,028,801.08**

300 Purchased Professional and Technical Services

310 Official / Administrative Services 138,022.75

322 Professional Educational Services – lus 18,650.00

323 Professional Educational Services – Other Educational Agencies 24,783.33

330 Other Professional Services 263,546.55

340 Technical Services 141,251.08

350 Security / Safety Services 82,635.51

360 Employee Training and Development Services 51,445.53

390 Other Purchased Professional and Technical Services 72,589.88

**Total Purchased Professional and Technical Services \$792,924.63**

400 Purchased Property Services

410 Cleaning Services 46,771.28

420 Utility Services 110,779.62

430 Repairs and Maintenance Services 284,806.10

440 Rentals 5,609.47

460 Extermination Services 4,600.00

**Total Purchased Property Services \$452,566.47**

500 Other Purchased Services

513 Contracted Carriers 2,840,261.58

520 Insurance – General 16,978.00

522 Automotive Liability Insurance 11,334.00

523 General Property and Liability Insurance 170,383.00

529 Other Insurance 1,100.00

530 Communications 69,821.25

549 Other Advertising/Public Relations 6,567.52

550 Printing and Binding 14,927.20

580 Travel 8,252.18

595 IU Payments By Withholding 31,196.38

**Total Other Purchased Services \$3,170,821.11**

600 Supplies

610 General Supplies 630,417.79

620 Energy 751,169.19

**General Fund (10)**

**2000 Support Services**

**Total**

**600 Supplies**

640 Books and Periodicals 43,256.13

650 Supplies & Fees – Technology Related 1,031,470.50

**Total Supplies \$2,456,313.61**

**700 Property**

752 Capital Equipment – Original and Additional 229,767.75

762 Capitalized Equipment - Replacement 61,366.92

766 Capitalized Technology Equipment – Replacement 24,906.00

**Total Property \$316,040.67**

**800 Other Objects**

810 Dues and Fees 105,467.16

890 Miscellaneous Expenditures 16,150.00

**Total Other Objects \$121,617.16**

**Total 2000 Support Services \$17,414,149.59**

**General Fund (10)**

	<u>Elementary</u>	<u>Secondary</u>	<u>Federal</u>	<u>Total</u>
<b>2100 Support Services – Students</b>				
<b>100 Personnel Services – Salaries</b>				
100 Personnel Services – Salaries	439,828.89	453,422.04		1,012,890.96
<b>Total Personnel Services – Salaries</b>	<b>\$439,828.89</b>	<b>\$453,422.04</b>		<b>\$1,012,890.96</b>
<b>200 Personnel Services – Employee Benefits</b>				
210 Group Insurance – Contracted Provider	836.19	788.60		1,873.91
220 Social Security Contributions	32,607.54	33,545.88		75,151.81
230 PSERS Retirement Contributions	166,790.17	167,314.18		375,628.27
260 Workers' Compensation	2,779.20	2,891.98		6,438.97
270 Group Insurance – Self-Insurance	77,737.56	79,929.51		169,981.95
<b>Total Personnel Services – Employee Benefits</b>	<b>\$280,750.66</b>	<b>\$284,470.15</b>		<b>\$629,074.91</b>
<b>300 Purchased Professional and Technical Services</b>				
323 Professional Educational Services – Other Educational Agencies	12,391.66	12,391.67		24,783.33
390 Other Purchased Professional and Technical Services	82.50	30,082.50	41,800.00	71,965.00
<b>Total Purchased Professional and Technical Services</b>	<b>\$12,474.16</b>	<b>\$42,474.17</b>	<b>\$41,800.00</b>	<b>\$96,748.33</b>
<b>500 Other Purchased Services</b>				
530 Communications				788.34
580 Travel	342.36	342.40		955.06
<b>Total Other Purchased Services</b>	<b>\$342.36</b>	<b>\$342.40</b>		<b>\$1,743.40</b>
<b>600 Supplies</b>				
610 General Supplies	2,930.37	4,804.13	1,380.93	9,115.43
640 Books and Periodicals	42.07	42.08		84.15
<b>Total Supplies</b>	<b>\$2,972.44</b>	<b>\$4,846.21</b>	<b>\$1,380.93</b>	<b>\$9,199.58</b>
<b>800 Other Objects</b>				
810 Dues and Fees	280.00	280.00		820.00
890 Miscellaneous Expenditures		16,150.00		16,150.00
<b>Total Other Objects</b>	<b>\$280.00</b>	<b>\$16,430.00</b>		<b>\$16,970.00</b>
<b>Total 2100 Support Services – Students</b>	<b>\$736,648.51</b>	<b>\$801,984.97</b>	<b>\$43,180.93</b>	<b>\$1,766,627.18</b>

**General Fund (10)**

	<u>Elementary</u>	<u>Secondary</u>	<u>Federal</u>	<u>Total</u>
<b>2110 Supervision of Student Services</b>				
<b>100 Personnel Services – Salaries</b>				
100 Personnel Services – Salaries	13,738.20	13,738.20		27,476.40
<b>Total Personnel Services – Salaries</b>	<b>\$13,738.20</b>	<b>\$13,738.20</b>		<b>\$27,476.40</b>
<b>200 Personnel Services – Employee Benefits</b>				
210 Group Insurance – Contracted Provider	41.23	41.46		82.69
220 Social Security Contributions	1,021.98	1,022.08		2,044.06
230 PSERS Retirement Contributions	4,742.78	4,742.89		9,485.67
260 Workers' Compensation	90.15	90.30		180.45
270 Group Insurance – Self-Insurance	2,844.87	2,845.33		5,690.20
<b>Total Personnel Services – Employee Benefits</b>	<b>\$8,741.01</b>	<b>\$8,742.06</b>		<b>\$17,483.07</b>
<b>500 Other Purchased Services</b>				
580 Travel	183.08	183.10		366.18
<b>Total Other Purchased Services</b>	<b>\$183.08</b>	<b>\$183.10</b>		<b>\$366.18</b>
<b>600 Supplies</b>				
610 General Supplies	60.00	60.00		120.00
640 Books and Periodicals	42.07	42.08		84.15
<b>Total Supplies</b>	<b>\$102.07</b>	<b>\$102.08</b>		<b>\$204.15</b>
<b>800 Other Objects</b>				
810 Dues and Fees	250.00	250.00		500.00
<b>Total Other Objects</b>	<b>\$250.00</b>	<b>\$250.00</b>		<b>\$500.00</b>
<b>Total 2110 Supervision of Student Services</b>	<b>\$23,014.36</b>	<b>\$23,015.44</b>		<b>\$46,029.80</b>

**General Fund (10)**

	<u>Elementary</u>	<u>Secondary</u>	<u>Federal</u>	<u>Total</u>
<b>2111 Supervision of Student Services – Head of Component</b>				
<b>100 Personnel Services – Salaries</b>				
100 Personnel Services – Salaries	13,738.20	13,738.20		27,476.40
<b>Total Personnel Services – Salaries</b>	<b>\$13,738.20</b>	<b>\$13,738.20</b>		<b>\$27,476.40</b>
<b>200 Personnel Services – Employee Benefits</b>				
210 Group Insurance – Contracted Provider	41.23	41.46		82.69
220 Social Security Contributions	1,021.98	1,022.08		2,044.06
230 PSERS Retirement Contributions	4,742.78	4,742.89		9,485.67
260 Workers' Compensation	90.15	90.30		180.45
270 Group Insurance – Self-Insurance	2,844.87	2,845.33		5,690.20
<b>Total Personnel Services – Employee Benefits</b>	<b>\$8,741.01</b>	<b>\$8,742.06</b>		<b>\$17,483.07</b>
<b>500 Other Purchased Services</b>				
580 Travel	183.08	183.10		366.18
<b>Total Other Purchased Services</b>	<b>\$183.08</b>	<b>\$183.10</b>		<b>\$366.18</b>
<b>600 Supplies</b>				
610 General Supplies	60.00	60.00		120.00
640 Books and Periodicals	42.07	42.08		84.15
<b>Total Supplies</b>	<b>\$102.07</b>	<b>\$102.08</b>		<b>\$204.15</b>
<b>800 Other Objects</b>				
810 Dues and Fees	250.00	250.00		500.00
<b>Total Other Objects</b>	<b>\$250.00</b>	<b>\$250.00</b>		<b>\$500.00</b>
<b>Total 2111 Supervision of Student Services – Head of Component</b>	<b>\$23,014.36</b>	<b>\$23,015.44</b>		<b>\$46,029.80</b>

**General Fund (10)**

	<u>Elementary</u>	<u>Secondary</u>	<u>Federal</u>	<u>Total</u>
<b>2120 Guidance Services</b>				
<b>100 Personnel Services – Salaries</b>				
100 Personnel Services – Salaries	293,898.24	337,120.61		631,018.85
<b>Total Personnel Services – Salaries</b>	<b>\$293,898.24</b>	<b>\$337,120.61</b>		<b>\$631,018.85</b>
<b>200 Personnel Services – Employee Benefits</b>				
210 Group Insurance – Contracted Provider	546.12	558.65		1,104.77
220 Social Security Contributions	21,870.42	25,114.34		46,984.76
230 PSERS Retirement Contributions	102,778.53	118,106.54		220,885.07
260 Workers' Compensation	1,842.20	2,182.22		4,024.42
270 Group Insurance – Self-Insurance	50,793.84	55,862.72		106,656.56
<b>Total Personnel Services – Employee Benefits</b>	<b>\$177,831.11</b>	<b>\$201,824.47</b>		<b>\$379,655.58</b>
<b>300 Purchased Professional and Technical Services</b>				
390 Other Purchased Professional and Technical Services	82.50	30,082.50	41,800.00	71,965.00
<b>Total Purchased Professional and Technical Services</b>	<b>\$82.50</b>	<b>\$30,082.50</b>	<b>\$41,800.00</b>	<b>\$71,965.00</b>
<b>600 Supplies</b>				
610 General Supplies	538.85	2,412.59		2,951.44
<b>Total Supplies</b>	<b>\$538.85</b>	<b>\$2,412.59</b>		<b>\$2,951.44</b>
<b>800 Other Objects</b>				
810 Dues and Fees	30.00	30.00		60.00
890 Miscellaneous Expenditures		16,150.00		16,150.00
<b>Total Other Objects</b>	<b>\$30.00</b>	<b>\$16,180.00</b>		<b>\$16,210.00</b>
<b>Total 2120 Guidance Services</b>	<b>\$472,380.70</b>	<b>\$587,620.17</b>	<b>\$41,800.00</b>	<b>\$1,101,800.87</b>

**General Fund (10)**

	<u>Elementary</u>	<u>Secondary</u>	<u>Federal</u>	<u>Total</u>
<b>2140 Psychological Services</b>				
<b>100 Personnel Services – Salaries</b>				
100 Personnel Services – Salaries	132,192.45	102,563.23		234,755.68
<b>Total Personnel Services – Salaries</b>	<b>\$132,192.45</b>	<b>\$102,563.23</b>		<b>\$234,755.68</b>
<b>200 Personnel Services – Employee Benefits</b>				
210 Group Insurance – Contracted Provider	248.84	188.49		437.33
220 Social Security Contributions	9,715.14	7,409.46		17,124.60
230 PSERS Retirement Contributions	59,268.86	44,464.75		103,733.61
260 Workers' Compensation	846.85	619.46		1,466.31
270 Group Insurance – Self-Insurance	24,098.85	21,221.46		45,320.31
<b>Total Personnel Services – Employee Benefits</b>	<b>\$94,178.54</b>	<b>\$73,903.62</b>		<b>\$168,082.16</b>
<b>300 Purchased Professional and Technical Services</b>				
323 Professional Educational Services – Other Educational Agencies	12,391.66	12,391.67		24,783.33
<b>Total Purchased Professional and Technical Services</b>	<b>\$12,391.66</b>	<b>\$12,391.67</b>		<b>\$24,783.33</b>
<b>500 Other Purchased Services</b>				
580 Travel	159.28	159.30		318.58
<b>Total Other Purchased Services</b>	<b>\$159.28</b>	<b>\$159.30</b>		<b>\$318.58</b>
<b>600 Supplies</b>				
610 General Supplies	2,331.52	2,331.54		4,663.06
<b>Total Supplies</b>	<b>\$2,331.52</b>	<b>\$2,331.54</b>		<b>\$4,663.06</b>
<b>Total 2140 Psychological Services</b>	<b>\$241,253.45</b>	<b>\$191,349.36</b>		<b>\$432,602.81</b>

**General Fund (10)**

	<u>Elementary</u>	<u>Secondary</u>	<u>Federal</u>	<u>Total</u>
<b>2160 Social Work Services</b>				
<b>100 Personnel Services – Salaries</b>				
100 Personnel Services – Salaries				67,771.04
<b>Total Personnel Services – Salaries</b>				<b>\$67,771.04</b>
<b>200 Personnel Services – Employee Benefits</b>				
210 Group Insurance – Contracted Provider				139.44
220 Social Security Contributions				5,184.56
230 PSERS Retirement Contributions				23,607.66
260 Workers' Compensation				432.72
<b>Total Personnel Services – Employee Benefits</b>				<b>\$29,364.38</b>
<b>500 Other Purchased Services</b>				
580 Travel				270.30
<b>Total Other Purchased Services</b>				<b>\$270.30</b>
<b>600 Supplies</b>				
610 General Supplies			1,380.93	1,380.93
<b>Total Supplies</b>			<b>\$1,380.93</b>	<b>\$1,380.93</b>
<b>800 Other Objects</b>				
810 Dues and Fees				260.00
<b>Total Other Objects</b>				<b>\$260.00</b>
<b>Total 2160 Social Work Services</b>			<b>\$1,380.93</b>	<b>\$99,046.65</b>

General Fund (10)

2170 Student Accounting Services

Elementary

Secondary

Federal

Total

100 Personnel Services – Salaries

100 Personnel Services – Salaries

51,868.99

**Total Personnel Services – Salaries**

**\$51,868.99**

200 Personnel Services – Employee Benefits

210 Group Insurance – Contracted Provider

109.68

220 Social Security Contributions

3,813.83

230 PSERS Retirement Contributions

17,916.26

260 Workers' Compensation

335.07

270 Group Insurance – Self-Insurance

12,314.88

**Total Personnel Services – Employee Benefits**

**\$34,489.72**

500 Other Purchased Services

530 Communications

788.34

**Total Other Purchased Services**

**\$788.34**

**Total 2170 Student Accounting Services**

**\$87,147.05**

**General Fund (10)**

	<u>Elementary</u>	<u>Secondary</u>	<u>Federal</u>	<u>Total</u>
<b>2200 Support Services – Instructional Staff</b>				
<b>100 Personnel Services – Salaries</b>				
100 Personnel Services – Salaries	398,583.24	257,323.31	180,961.30	836,867.85
<b>Total Personnel Services – Salaries</b>	<b>\$398,583.24</b>	<b>\$257,323.31</b>	<b>\$180,961.30</b>	<b>\$836,867.85</b>
<b>200 Personnel Services – Employee Benefits</b>				
210 Group Insurance – Contracted Provider	1,055.08	792.93		1,848.01
220 Social Security Contributions	31,835.09	21,330.92	5,034.87	58,200.88
230 PSERS Retirement Contributions	161,747.40	111,952.88	22,757.00	296,457.28
240 Tuition Reimbursement	88,561.69	98,709.00		187,270.69
260 Workers' Compensation	2,999.04	2,020.85		5,019.89
270 Group Insurance – Self-Insurance	75,283.13	44,700.03		119,983.16
299 All Other Employee Benefits	1,500.00	1,500.00		3,000.00
<b>Total Personnel Services – Employee Benefits</b>	<b>\$362,981.43</b>	<b>\$281,006.61</b>	<b>\$27,791.87</b>	<b>\$671,779.91</b>
<b>300 Purchased Professional and Technical Services</b>				
322 Professional Educational Services – Ius	9,325.00	9,325.00		18,650.00
360 Employee Training and Development Services	4,655.17	10,298.25	23,960.12	38,913.54
<b>Total Purchased Professional and Technical Services</b>	<b>\$13,980.17</b>	<b>\$19,623.25</b>	<b>\$23,960.12</b>	<b>\$57,563.54</b>
<b>500 Other Purchased Services</b>				
580 Travel	1,790.46	1,790.51		3,580.97
<b>Total Other Purchased Services</b>	<b>\$1,790.46</b>	<b>\$1,790.51</b>		<b>\$3,580.97</b>
<b>600 Supplies</b>				
610 General Supplies	10,015.36	9,149.78		19,165.14
640 Books and Periodicals	16,110.95	27,061.03		43,171.98
<b>Total Supplies</b>	<b>\$26,126.31</b>	<b>\$36,210.81</b>		<b>\$62,337.12</b>
<b>800 Other Objects</b>				
810 Dues and Fees	3,724.50	6,949.05		10,673.55
<b>Total Other Objects</b>	<b>\$3,724.50</b>	<b>\$6,949.05</b>		<b>\$10,673.55</b>
<b>Total 2200 Support Services – Instructional Staff</b>	<b>\$807,186.11</b>	<b>\$602,903.54</b>	<b>\$232,713.29</b>	<b>\$1,642,802.94</b>

**General Fund (10)**

	<u>Elementary</u>	<u>Secondary</u>	<u>Federal</u>	<u>Total</u>
<b>2220 Technology Support Services</b>				
<b>100 Personnel Services – Salaries</b>				
100 Personnel Services – Salaries	13,757.72	14,012.51	105,471.83	133,242.06
<b>Total Personnel Services – Salaries</b>	<b>\$13,757.72</b>	<b>\$14,012.51</b>	<b>\$105,471.83</b>	<b>\$133,242.06</b>
<b>200 Personnel Services – Employee Benefits</b>				
210 Group Insurance – Contracted Provider	105.75	52.70		158.45
220 Social Security Contributions	821.26	490.77	4,034.29	5,346.32
230 PSERS Retirement Contributions	17,146.14	15,669.75	18,109.52	50,925.41
260 Workers' Compensation	414.29	378.53		792.82
270 Group Insurance – Self-Insurance	15,413.57	12,229.36		27,642.93
<b>Total Personnel Services – Employee Benefits</b>	<b>\$33,901.01</b>	<b>\$28,821.11</b>	<b>\$22,143.81</b>	<b>\$84,865.93</b>
<b>Total 2220 Technology Support Services</b>	<b>\$47,658.73</b>	<b>\$42,833.62</b>	<b>\$127,615.64</b>	<b>\$218,107.99</b>

General Fund (10)

2240 Computer-Assisted Instruction Support Services

600 Supplies

610 General Supplies

**Total Supplies**

**Total 2240 Computer-Assisted Instruction Support Services**

	<u>Elementary</u>	<u>Secondary</u>	<u>Federal</u>	<u>Total</u>
	8.32	8.33		16.65
	<b>\$8.32</b>	<b>\$8.33</b>		<b>\$16.65</b>
	<b>\$8.32</b>	<b>\$8.33</b>		<b>\$16.65</b>

**General Fund (10)**

	<u>Elementary</u>	<u>Secondary</u>	<u>Federal</u>	<u>Total</u>
<b>2250 School Library Services</b>				
<b>100 Personnel Services – Salaries</b>				
100 Personnel Services – Salaries	226,114.79	84,249.74		310,364.53
<b>Total Personnel Services – Salaries</b>	<b>\$226,114.79</b>	<b>\$84,249.74</b>		<b>\$310,364.53</b>
<b>200 Personnel Services – Employee Benefits</b>				
210 Group Insurance – Contracted Provider	447.25	238.15		685.40
220 Social Security Contributions	16,877.13	6,318.86		23,195.99
230 PSERS Retirement Contributions	78,841.92	28,747.05		107,588.97
260 Workers' Compensation	1,486.50	543.94		2,030.44
270 Group Insurance – Self-Insurance	37,480.12	10,080.97		47,561.09
<b>Total Personnel Services – Employee Benefits</b>	<b>\$135,132.92</b>	<b>\$45,928.97</b>		<b>\$181,061.89</b>
<b>600 Supplies</b>				
610 General Supplies	1,691.03	825.24		2,516.27
640 Books and Periodicals	11,416.57	22,366.65		33,783.22
<b>Total Supplies</b>	<b>\$13,107.60</b>	<b>\$23,191.89</b>		<b>\$36,299.49</b>
<b>800 Other Objects</b>				
810 Dues and Fees	3,526.50	6,751.05		10,277.55
<b>Total Other Objects</b>	<b>\$3,526.50</b>	<b>\$6,751.05</b>		<b>\$10,277.55</b>
<b>Total 2250 School Library Services</b>	<b>\$377,881.81</b>	<b>\$160,121.65</b>		<b>\$538,003.46</b>

**General Fund (10)**

	<u>Elementary</u>	<u>Secondary</u>	<u>Federal</u>	<u>Total</u>
<b>2260 Instruction and Curriculum Development Services</b>				
<b>100 Personnel Services – Salaries</b>				
100 Personnel Services – Salaries	158,710.73	159,061.06	62,150.00	379,921.79
<b>Total Personnel Services – Salaries</b>	<b>\$158,710.73</b>	<b>\$159,061.06</b>	<b>\$62,150.00</b>	<b>\$379,921.79</b>
<b>200 Personnel Services – Employee Benefits</b>				
210 Group Insurance – Contracted Provider	502.08	502.08		1,004.16
220 Social Security Contributions	14,080.24	14,464.82		28,545.06
230 PSERS Retirement Contributions	65,494.89	67,271.63		132,766.52
260 Workers' Compensation	1,098.25	1,098.38		2,196.63
270 Group Insurance – Self-Insurance	22,389.44	22,389.70		44,779.14
299 All Other Employee Benefits	1,500.00	1,500.00		3,000.00
<b>Total Personnel Services – Employee Benefits</b>	<b>\$105,064.90</b>	<b>\$107,226.61</b>		<b>\$212,291.51</b>
<b>500 Other Purchased Services</b>				
580 Travel	1,083.50	1,083.55		2,167.05
<b>Total Other Purchased Services</b>	<b>\$1,083.50</b>	<b>\$1,083.55</b>		<b>\$2,167.05</b>
<b>600 Supplies</b>				
610 General Supplies	8,316.01	8,316.21		16,632.22
640 Books and Periodicals	4,694.38	4,694.38		9,388.76
<b>Total Supplies</b>	<b>\$13,010.39</b>	<b>\$13,010.59</b>		<b>\$26,020.98</b>
<b>800 Other Objects</b>				
810 Dues and Fees	198.00	198.00		396.00
<b>Total Other Objects</b>	<b>\$198.00</b>	<b>\$198.00</b>		<b>\$396.00</b>
<b>Total 2260 Instruction and Curriculum Development Services</b>	<b>\$278,067.52</b>	<b>\$280,579.81</b>	<b>\$62,150.00</b>	<b>\$620,797.33</b>

**General Fund (10)**

	<u>Elementary</u>	<u>Secondary</u>	<u>Federal</u>	<u>Total</u>
<b>2270 Instructional Staff Professional Development Services</b>				
<b>100 Personnel Services – Salaries</b>				
100 Personnel Services – Salaries			13,339.47	13,339.47
<b>Total Personnel Services – Salaries</b>			<b>\$13,339.47</b>	<b>\$13,339.47</b>
<b>200 Personnel Services – Employee Benefits</b>				
220 Social Security Contributions	56.46	56.47	1,000.58	1,113.51
230 PSERS Retirement Contributions	264.45	264.45	4,647.48	5,176.38
240 Tuition Reimbursement	88,561.69	98,709.00		187,270.69
<b>Total Personnel Services – Employee Benefits</b>	<b>\$88,882.60</b>	<b>\$99,029.92</b>	<b>\$5,648.06</b>	<b>\$193,560.58</b>
<b>300 Purchased Professional and Technical Services</b>				
322 Professional Educational Services – lus	9,325.00	9,325.00		18,650.00
360 Employee Training and Development Services	4,655.17	10,298.25	23,960.12	38,913.54
<b>Total Purchased Professional and Technical Services</b>	<b>\$13,980.17</b>	<b>\$19,623.25</b>	<b>\$23,960.12</b>	<b>\$57,563.54</b>
<b>500 Other Purchased Services</b>				
580 Travel	706.96	706.96		1,413.92
<b>Total Other Purchased Services</b>	<b>\$706.96</b>	<b>\$706.96</b>		<b>\$1,413.92</b>
<b>Total 2270 Instructional Staff Professional Development Services</b>	<b>\$103,569.73</b>	<b>\$119,360.13</b>	<b>\$42,947.65</b>	<b>\$265,877.51</b>

**General Fund (10)**

	<u>Elementary</u>	<u>Secondary</u>	<u>Federal</u>	<u>Total</u>
<b>2300 Support Services – Administration</b>				
<b>100 Personnel Services – Salaries</b>				
100 Personnel Services – Salaries	566,224.12	525,696.94	45,607.64	1,541,108.36
<b>Total Personnel Services – Salaries</b>	<b>\$566,224.12</b>	<b>\$525,696.94</b>	<b>\$45,607.64</b>	<b>\$1,541,108.36</b>
<b>200 Personnel Services – Employee Benefits</b>				
210 Group Insurance – Contracted Provider	1,558.08	1,401.86		3,855.08
220 Social Security Contributions	42,185.42	40,054.92	1,744.49	112,543.41
230 PSERS Retirement Contributions	195,421.12	187,797.56	7,967.65	508,060.73
260 Workers' Compensation	3,717.28	3,666.29		9,643.72
270 Group Insurance – Self-Insurance	129,615.42	145,767.56		312,242.03
299 All Other Employee Benefits	5,341.69	4,437.50		12,341.74
<b>Total Personnel Services – Employee Benefits</b>	<b>\$377,839.01</b>	<b>\$383,125.69</b>	<b>\$9,712.14</b>	<b>\$958,686.71</b>
<b>300 Purchased Professional and Technical Services</b>				
310 Official / Administrative Services				138,022.75
330 Other Professional Services				101,815.40
390 Other Purchased Professional and Technical Services		107.89		124.88
<b>Total Purchased Professional and Technical Services</b>		<b>\$107.89</b>		<b>\$239,963.03</b>
<b>500 Other Purchased Services</b>				
520 Insurance – General				16,978.00
530 Communications	5,717.74	7,085.47		13,882.68
549 Other Advertising/Public Relations				1,074.68
580 Travel				941.43
<b>Total Other Purchased Services</b>	<b>\$5,717.74</b>	<b>\$7,085.47</b>		<b>\$32,876.79</b>
<b>600 Supplies</b>				
610 General Supplies	1,448.96	10,812.94		31,277.65
650 Supplies & Fees – Technology Related				5,140.99
<b>Total Supplies</b>	<b>\$1,448.96</b>	<b>\$10,812.94</b>		<b>\$36,418.64</b>
<b>800 Other Objects</b>				
810 Dues and Fees	2,213.14	1,800.00		35,916.59
<b>Total Other Objects</b>	<b>\$2,213.14</b>	<b>\$1,800.00</b>		<b>\$35,916.59</b>
<b>Total 2300 Support Services – Administration</b>	<b>\$953,442.97</b>	<b>\$928,628.93</b>	<b>\$55,319.78</b>	<b>\$2,844,970.12</b>

General Fund (10)

2310 Board Services

Elementary

Secondary

Federal

Total

300 Purchased Professional and Technical Services

390 Other Purchased Professional and Technical Services

16.99

**Total Purchased Professional and Technical Services**

**\$16.99**

500 Other Purchased Services

520 Insurance – General

16,978.00

549 Other Advertising/Public Relations

1,074.68

**Total Other Purchased Services**

**\$18,052.68**

600 Supplies

610 General Supplies

4,627.87

**Total Supplies**

**\$4,627.87**

800 Other Objects

810 Dues and Fees

16,579.80

**Total Other Objects**

**\$16,579.80**

**Total 2310 Board Services**

**\$39,277.34**

General Fund (10)

	<u>Elementary</u>	<u>Secondary</u>	<u>Federal</u>	<u>Total</u>
<b>2330 Tax Assessment and Collection Services</b>				
<b>300 <u>Purchased Professional and Technical Services</u></b>				
310 Official / Administrative Services				138,022.75
<b>Total Purchased Professional and Technical Services</b>				<b>\$138,022.75</b>
<b>500 <u>Other Purchased Services</u></b>				
530 Communications				1,079.47
<b>Total Other Purchased Services</b>				<b>\$1,079.47</b>
<b>600 <u>Supplies</u></b>				
610 General Supplies				1,807.88
<b>Total Supplies</b>				<b>\$1,807.88</b>
<b>800 <u>Other Objects</u></b>				
810 Dues and Fees				6,670.65
<b>Total Other Objects</b>				<b>\$6,670.65</b>
<b>Total 2330 Tax Assessment and Collection Services</b>				<b>\$147,580.75</b>

General Fund (10)

2340 Staff Relations and Negotiations Services

Elementary

Secondary

Federal

Total

500 Other Purchased Services

580 Travel

79.97

**Total Other Purchased Services**

**\$79.97**

600 Supplies

610 General Supplies

253.44

**Total Supplies**

**\$253.44**

**Total 2340 Staff Relations and Negotiations Services**

**\$333.41**

General Fund (10)

2350 Legal and Accounting Services

Elementary

Secondary

Federal

Total

300 Purchased Professional and Technical Services

330 Other Professional Services

95,642.40

**Total Purchased Professional and Technical Services**

**\$95,642.40**

**Total 2350 Legal and Accounting Services**

**\$95,642.40**

**General Fund (10)**

	<u>Elementary</u>	<u>Secondary</u>	<u>Federal</u>	<u>Total</u>
<b>2360 Office of the Superintendent / Executive Director Services</b>				
<b>100 Personnel Services – Salaries</b>				
100 Personnel Services – Salaries				403,579.66
<b>Total Personnel Services – Salaries</b>				<b>\$403,579.66</b>
<b>200 Personnel Services – Employee Benefits</b>				
210 Group Insurance – Contracted Provider				895.14
220 Social Security Contributions				28,558.58
230 PSERS Retirement Contributions				116,874.40
260 Workers' Compensation				2,260.15
270 Group Insurance – Self-Insurance				36,859.05
299 All Other Employee Benefits				2,562.55
<b>Total Personnel Services – Employee Benefits</b>				<b>\$188,009.87</b>
<b>300 Purchased Professional and Technical Services</b>				
330 Other Professional Services				6,173.00
<b>Total Purchased Professional and Technical Services</b>				<b>\$6,173.00</b>
<b>500 Other Purchased Services</b>				
530 Communications	1,255.28	1,255.44		2,510.72
580 Travel				861.46
<b>Total Other Purchased Services</b>	<b>\$1,255.28</b>	<b>\$1,255.44</b>		<b>\$3,372.18</b>
<b>600 Supplies</b>				
610 General Supplies				12,326.56
650 Supplies & Fees – Technology Related				5,140.99
<b>Total Supplies</b>				<b>\$17,467.55</b>
<b>800 Other Objects</b>				
810 Dues and Fees				8,653.00
<b>Total Other Objects</b>				<b>\$8,653.00</b>
<b>Total 2360 Office of the Superintendent / Executive Director Services</b>	<b>\$1,255.28</b>	<b>\$1,255.44</b>		<b>\$627,255.26</b>

**General Fund (10)**

	<u>Elementary</u>	<u>Secondary</u>	<u>Federal</u>	<u>Total</u>
<b>2380 Office of the Principal Services</b>				
<b>100 Personnel Services – Salaries</b>				
100 Personnel Services – Salaries	566,224.12	525,696.94	45,607.64	1,137,528.70
<b>Total Personnel Services – Salaries</b>	<b>\$566,224.12</b>	<b>\$525,696.94</b>	<b>\$45,607.64</b>	<b>\$1,137,528.70</b>
<b>200 Personnel Services – Employee Benefits</b>				
210 Group Insurance – Contracted Provider	1,558.08	1,401.86		2,959.94
220 Social Security Contributions	42,185.42	40,054.92	1,744.49	83,984.83
230 PSERS Retirement Contributions	195,421.12	187,797.56	7,967.65	391,186.33
260 Workers' Compensation	3,717.28	3,666.29		7,383.57
270 Group Insurance – Self-Insurance	129,615.42	145,767.56		275,382.98
299 All Other Employee Benefits	5,341.69	4,437.50		9,779.19
<b>Total Personnel Services – Employee Benefits</b>	<b>\$377,839.01</b>	<b>\$383,125.69</b>	<b>\$9,712.14</b>	<b>\$770,676.84</b>
<b>300 Purchased Professional and Technical Services</b>				
390 Other Purchased Professional and Technical Services		107.89		107.89
<b>Total Purchased Professional and Technical Services</b>		<b>\$107.89</b>		<b>\$107.89</b>
<b>500 Other Purchased Services</b>				
530 Communications	4,462.46	5,830.03		10,292.49
<b>Total Other Purchased Services</b>	<b>\$4,462.46</b>	<b>\$5,830.03</b>		<b>\$10,292.49</b>
<b>600 Supplies</b>				
610 General Supplies	1,448.96	10,812.94		12,261.90
<b>Total Supplies</b>	<b>\$1,448.96</b>	<b>\$10,812.94</b>		<b>\$12,261.90</b>
<b>800 Other Objects</b>				
810 Dues and Fees	2,213.14	1,800.00		4,013.14
<b>Total Other Objects</b>	<b>\$2,213.14</b>	<b>\$1,800.00</b>		<b>\$4,013.14</b>
<b>Total 2380 Office of the Principal Services</b>	<b>\$952,187.69</b>	<b>\$927,373.49</b>	<b>\$55,319.78</b>	<b>\$1,934,880.96</b>

General Fund (10)

	<u>Elementary</u>	<u>Secondary</u>	<u>Federal</u>	<u>Total</u>
<b>2400 Support Services – Pupil Health</b>				
<b>100 Personnel Services – Salaries</b>				
100 Personnel Services – Salaries				294,753.75
<b>Total Personnel Services – Salaries</b>				<b>\$294,753.75</b>
<b>200 Personnel Services – Employee Benefits</b>				
210 Group Insurance – Contracted Provider				634.92
220 Social Security Contributions				21,347.27
230 PSERS Retirement Contributions				101,901.69
260 Workers' Compensation				1,895.18
270 Group Insurance – Self-Insurance				83,609.19
<b>Total Personnel Services – Employee Benefits</b>				<b>\$209,388.25</b>
<b>300 Purchased Professional and Technical Services</b>				
330 Other Professional Services				120.00
<b>Total Purchased Professional and Technical Services</b>				<b>\$120.00</b>
<b>500 Other Purchased Services</b>				
580 Travel				25.74
<b>Total Other Purchased Services</b>				<b>\$25.74</b>
<b>600 Supplies</b>				
610 General Supplies				3,130.75
<b>Total Supplies</b>				<b>\$3,130.75</b>
<b>Total 2400 Support Services – Pupil Health</b>				<b>\$507,418.49</b>

General Fund (10)

2430 Dental Services

Elementary

Secondary

Federal

Total

300 Purchased Professional and Technical Services

330 Other Professional Services

120.00

**Total Purchased Professional and Technical Services**

**\$120.00**

**Total 2430 Dental Services**

**\$120.00**

General Fund (10)

2440 Nursing Services

Elementary                      Secondary                      Federal                      Total

**100 Personnel Services – Salaries**  
100 Personnel Services – Salaries 294,753.75

**Total Personnel Services – Salaries \$294,753.75**

**200 Personnel Services – Employee Benefits**  
210 Group Insurance – Contracted Provider 634.92  
220 Social Security Contributions 21,347.27  
230 PSERS Retirement Contributions 101,901.69  
260 Workers' Compensation 1,895.18  
270 Group Insurance – Self-Insurance 83,609.19

**Total Personnel Services – Employee Benefits \$209,388.25**

**500 Other Purchased Services**  
580 Travel 25.74

**Total Other Purchased Services \$25.74**

**600 Supplies**  
610 General Supplies 3,130.75

**Total Supplies \$3,130.75**

**Total 2440 Nursing Services \$507,298.49**

**General Fund (10)**

	<u>Elementary</u>	<u>Secondary</u>	<u>Federal</u>	<u>Total</u>
<b>2500 Support Services – Business</b>				
<b>100 Personnel Services – Salaries</b>				
100 Personnel Services – Salaries				394,508.53
<b>Total Personnel Services – Salaries</b>				<b>\$394,508.53</b>
<b>200 Personnel Services – Employee Benefits</b>				
210 Group Insurance – Contracted Provider				28,745.26
220 Social Security Contributions				29,333.98
230 PSERS Retirement Contributions				137,262.08
260 Workers' Compensation				2,552.67
270 Group Insurance – Self-Insurance				76,253.22
299 All Other Employee Benefits				3,000.00
<b>Total Personnel Services – Employee Benefits</b>				<b>\$277,147.21</b>
<b>300 Purchased Professional and Technical Services</b>				
330 Other Professional Services				40,550.00
340 Technical Services				4,887.00
<b>Total Purchased Professional and Technical Services</b>				<b>\$45,437.00</b>
<b>500 Other Purchased Services</b>				
530 Communications				20,010.65
550 Printing and Binding				14,927.20
580 Travel				172.06
<b>Total Other Purchased Services</b>				<b>\$35,109.91</b>
<b>600 Supplies</b>				
610 General Supplies				9,763.42
650 Supplies & Fees – Technology Related				91,186.60
<b>Total Supplies</b>				<b>\$100,950.02</b>
<b>800 Other Objects</b>				
810 Dues and Fees				46,277.68
<b>Total Other Objects</b>				<b>\$46,277.68</b>
<b>Total 2500 Support Services – Business</b>				<b>\$899,430.35</b>

**General Fund (10)**

**2510 Fiscal Services**

Elementary                      Secondary                      Federal                      Total

<b>100</b>	<b><u>Personnel Services – Salaries</u></b>				
	100 Personnel Services – Salaries				380,299.57
<b>Total Personnel Services – Salaries</b>					<b>\$380,299.57</b>
<b>200</b>	<b><u>Personnel Services – Employee Benefits</u></b>				
	210 Group Insurance – Contracted Provider				28,745.26
	220 Social Security Contributions				28,247.00
	230 PSERS Retirement Contributions				132,295.22
	260 Workers' Compensation				2,461.92
	270 Group Insurance – Self-Insurance				76,253.22
	299 All Other Employee Benefits				3,000.00
<b>Total Personnel Services – Employee Benefits</b>					<b>\$271,002.62</b>
<b>300</b>	<b><u>Purchased Professional and Technical Services</u></b>				
	330 Other Professional Services				40,550.00
	340 Technical Services				4,887.00
<b>Total Purchased Professional and Technical Services</b>					<b>\$45,437.00</b>
<b>500</b>	<b><u>Other Purchased Services</u></b>				
	530 Communications				20,010.65
	580 Travel				172.06
<b>Total Other Purchased Services</b>					<b>\$20,182.71</b>
<b>600</b>	<b><u>Supplies</u></b>				
	610 General Supplies				9,763.42
	650 Supplies & Fees – Technology Related				91,186.60
<b>Total Supplies</b>					<b>\$100,950.02</b>
<b>800</b>	<b><u>Other Objects</u></b>				
	810 Dues and Fees				46,277.68
<b>Total Other Objects</b>					<b>\$46,277.68</b>
<b>Total 2510 Fiscal Services</b>					<b>\$864,149.60</b>

**General Fund (10)**

	<u>Elementary</u>	<u>Secondary</u>	<u>Federal</u>	<u>Total</u>
<b>2511 Supervision of Fiscal Services - Head of Component</b>				
<b>100 Personnel Services – Salaries</b>				
100 Personnel Services – Salaries				220,526.36
<b>Total Personnel Services – Salaries</b>				<b>\$220,526.36</b>
<b>200 Personnel Services – Employee Benefits</b>				
210 Group Insurance – Contracted Provider				28,254.28
220 Social Security Contributions				16,430.81
230 PSERS Retirement Contributions				76,975.63
260 Workers' Compensation				1,427.65
270 Group Insurance – Self-Insurance				43,162.32
299 All Other Employee Benefits				1,500.00
<b>Total Personnel Services – Employee Benefits</b>				<b>\$167,750.69</b>
<b>300 Purchased Professional and Technical Services</b>				
330 Other Professional Services				40,550.00
340 Technical Services				4,887.00
<b>Total Purchased Professional and Technical Services</b>				<b>\$45,437.00</b>
<b>500 Other Purchased Services</b>				
530 Communications				20,010.65
580 Travel				172.06
<b>Total Other Purchased Services</b>				<b>\$20,182.71</b>
<b>600 Supplies</b>				
610 General Supplies				9,763.42
650 Supplies & Fees – Technology Related				91,186.60
<b>Total Supplies</b>				<b>\$100,950.02</b>
<b>800 Other Objects</b>				
810 Dues and Fees				42,677.68
<b>Total Other Objects</b>				<b>\$42,677.68</b>
<b>Total 2511 Supervision of Fiscal Services - Head of Component</b>				<b>\$597,524.46</b>

General Fund (10)

2512 Budgeting Services

Elementary

Secondary

Federal

Total

100 Personnel Services – Salaries

100 Personnel Services – Salaries

87,921.72

**Total Personnel Services – Salaries**

**\$87,921.72**

200 Personnel Services – Employee Benefits

210 Group Insurance – Contracted Provider

328.44

220 Social Security Contributions

6,776.63

230 PSERS Retirement Contributions

30,352.92

260 Workers' Compensation

574.26

270 Group Insurance – Self-Insurance

7,193.70

299 All Other Employee Benefits

1,500.00

**Total Personnel Services – Employee Benefits**

**\$46,725.95**

**Total 2512 Budgeting Services**

**\$134,647.67**

**General Fund (10)**

<b>2513 Receiving and Disbursing Funds Services</b>	<u>Elementary</u>	<u>Secondary</u>	<u>Federal</u>	<u>Total</u>
<b>100 Personnel Services – Salaries</b>				
100 Personnel Services – Salaries				21,267.12
<b>Total Personnel Services – Salaries</b>				<b>\$21,267.12</b>
<b>200 Personnel Services – Employee Benefits</b>				
210 Group Insurance – Contracted Provider				52.86
220 Social Security Contributions				1,473.93
230 PSERS Retirement Contributions				7,345.68
260 Workers' Compensation				134.34
270 Group Insurance – Self-Insurance				8,632.32
<b>Total Personnel Services – Employee Benefits</b>				<b>\$17,639.13</b>
<b>Total 2513 Receiving and Disbursing Funds Services</b>				<b>\$38,906.25</b>

General Fund (10)

2514 Payroll Services

Elementary

Secondary

Federal

Total

100 Personnel Services – Salaries

100 Personnel Services – Salaries

50,584.37

**Total Personnel Services – Salaries**

**\$50,584.37**

200 Personnel Services – Employee Benefits

210 Group Insurance – Contracted Provider

109.68

220 Social Security Contributions

3,565.63

230 PSERS Retirement Contributions

17,620.99

260 Workers' Compensation

325.67

270 Group Insurance – Self-Insurance

17,264.88

**Total Personnel Services – Employee Benefits**

**\$38,886.85**

**Total 2514 Payroll Services**

**\$89,471.22**

General Fund (10)

2519 Other Fiscal Services

Elementary

Secondary

Federal

Total

800 Other Objects

810 Dues and Fees

3,600.00

**Total Other Objects**

**\$3,600.00**

**Total 2519 Other Fiscal Services**

**\$3,600.00**

General Fund (10)

2530 Warehousing and Distributing Services	<u>Elementary</u>	<u>Secondary</u>	<u>Federal</u>	<u>Total</u>
<b>100 Personnel Services – Salaries</b>				
100 Personnel Services – Salaries				14,208.96
<b>Total Personnel Services – Salaries</b>				<b>\$14,208.96</b>
<b>200 Personnel Services – Employee Benefits</b>				
220 Social Security Contributions				1,086.98
230 PSERS Retirement Contributions				4,966.86
260 Workers' Compensation				90.75
<b>Total Personnel Services – Employee Benefits</b>				<b>\$6,144.59</b>
<b>Total 2530 Warehousing and Distributing Services</b>				<b>\$20,353.55</b>

General Fund (10)

2540 Printing, Publishing and Duplicating Services

Elementary

Secondary

Federal

Total

500 Other Purchased Services

550 Printing and Binding

14,927.20

**Total Other Purchased Services**

**\$14,927.20**

**Total 2540 Printing, Publishing and Duplicating Services**

**\$14,927.20**

**General Fund (10)**

	<u>Elementary</u>	<u>Secondary</u>	<u>Federal</u>	<u>Total</u>
<b>2600 Operation and Maintenance of Plant Services</b>				
<b>100 Personnel Services – Salaries</b>				
100 Personnel Services – Salaries				1,383,340.92
<b>Total Personnel Services – Salaries</b>				<b>\$1,383,340.92</b>
<b>200 Personnel Services – Employee Benefits</b>				
210 Group Insurance – Contracted Provider				2,956.84
220 Social Security Contributions				102,450.55
230 PSERS Retirement Contributions				473,516.72
260 Workers' Compensation				8,871.27
270 Group Insurance – Self-Insurance				305,573.79
299 All Other Employee Benefits				3,000.00
<b>Total Personnel Services – Employee Benefits</b>				<b>\$896,369.17</b>
<b>300 Purchased Professional and Technical Services</b>				
330 Other Professional Services			116,435.59	119,900.59
350 Security / Safety Services				82,635.51
390 Other Purchased Professional and Technical Services				500.00
<b>Total Purchased Professional and Technical Services</b>			<b>\$116,435.59</b>	<b>\$203,036.10</b>
<b>400 Purchased Property Services</b>				
410 Cleaning Services				46,771.28
420 Utility Services				110,779.62
430 Repairs and Maintenance Services				270,513.26
440 Rentals				16,501.73
460 Extermination Services				4,600.00
<b>Total Purchased Property Services</b>				<b>\$449,165.89</b>
<b>500 Other Purchased Services</b>				
522 Automotive Liability Insurance				11,334.00
523 General Property and Liability Insurance				170,383.00
529 Other Insurance				1,100.00
530 Communications				33,984.83
549 Other Advertising/Public Relations				3,535.24
<b>Total Other Purchased Services</b>				<b>\$220,337.07</b>
<b>600 Supplies</b>				
610 General Supplies	110,145.56	79,864.05	29,117.57	219,127.18
620 Energy				733,736.59
<b>Total Supplies</b>	<b>\$110,145.56</b>	<b>\$79,864.05</b>	<b>\$29,117.57</b>	<b>\$952,863.77</b>
<b>700 Property</b>				
752 Capital Equipment – Original and Additional			175,080.00	229,767.75
762 Capitalized Equipment - Replacement				61,366.92
<b>Total Property</b>			<b>\$175,080.00</b>	<b>\$291,134.67</b>
<b>800 Other Objects</b>				
810 Dues and Fees				671.50
<b>Total Other Objects</b>				<b>\$671.50</b>
<b>Total 2600 Operation and Maintenance of Plant Services</b>	<b>\$110,145.56</b>	<b>\$79,864.05</b>	<b>\$320,633.16</b>	<b>\$4,396,919.09</b>

**General Fund (10)**

	<u>Elementary</u>	<u>Secondary</u>	<u>Federal</u>	<u>Total</u>
<b>2610 Supervision of Operation and Maintenance of Plant Services</b>				
<b>100 Personnel Services – Salaries</b>				
100 Personnel Services – Salaries				220,864.82
<b>Total Personnel Services – Salaries</b>				<b>\$220,864.82</b>
<b>200 Personnel Services – Employee Benefits</b>				
210 Group Insurance – Contracted Provider				405.60
220 Social Security Contributions				16,818.81
230 PSERS Retirement Contributions				76,286.49
260 Workers' Compensation				1,461.42
270 Group Insurance – Self-Insurance				25,291.89
299 All Other Employee Benefits				3,000.00
<b>Total Personnel Services – Employee Benefits</b>				<b>\$123,264.21</b>
<b>500 Other Purchased Services</b>				
529 Other Insurance				1,100.00
<b>Total Other Purchased Services</b>				<b>\$1,100.00</b>
<b>800 Other Objects</b>				
810 Dues and Fees				671.50
<b>Total Other Objects</b>				<b>\$671.50</b>
<b>Total 2610 Supervision of Operation and Maintenance of Plant Services</b>				<b>\$345,900.53</b>

**General Fund (10)**

	<u>Elementary</u>	<u>Secondary</u>	<u>Federal</u>	<u>Total</u>
<b>2611 Supervision of Operation and Maintenance of Plant Services – Head of Component</b>				
<b>100 <u>Personnel Services – Salaries</u></b>				
100 Personnel Services – Salaries				155,864.82
<b>Total Personnel Services – Salaries</b>				<b>\$155,864.82</b>
<b>200 <u>Personnel Services – Employee Benefits</u></b>				
210 Group Insurance – Contracted Provider				147.12
220 Social Security Contributions				12,057.03
230 PSERS Retirement Contributions				53,575.49
260 Workers' Compensation				1,014.72
270 Group Insurance – Self-Insurance				10,295.76
299 All Other Employee Benefits				3,000.00
<b>Total Personnel Services – Employee Benefits</b>				<b>\$80,090.12</b>
<b>500 <u>Other Purchased Services</u></b>				
529 Other Insurance				1,100.00
<b>Total Other Purchased Services</b>				<b>\$1,100.00</b>
<b>800 <u>Other Objects</u></b>				
810 Dues and Fees				671.50
<b>Total Other Objects</b>				<b>\$671.50</b>
<b>Total 2611 Supervision of Operation and Maintenance of Plant Services – Head of Component</b>				<b>\$237,726.44</b>

General Fund (10)

2619 Supervision of Operation and Maintenance of Plant Services – All Other Supervision

Elementary

Secondary

Federal

Total

100 Personnel Services – Salaries

100 Personnel Services – Salaries

65,000.00

**Total Personnel Services – Salaries**

**\$65,000.00**

200 Personnel Services – Employee Benefits

210 Group Insurance – Contracted Provider

258.48

220 Social Security Contributions

4,761.78

230 PSERS Retirement Contributions

22,711.00

260 Workers' Compensation

446.70

270 Group Insurance – Self-Insurance

14,996.13

**Total Personnel Services – Employee Benefits**

**\$43,174.09**

**Total 2619 Supervision of Operation and Maintenance of Plant Services – All Other Supervision**

**\$108,174.09**

**General Fund (10)**

	<u>Elementary</u>	<u>Secondary</u>	<u>Federal</u>	<u>Total</u>
<b>2620 Operation of Buildings Services</b>				
<b>100 Personnel Services – Salaries</b>				
100 Personnel Services – Salaries				1,162,476.10
<b>Total Personnel Services – Salaries</b>				<b>\$1,162,476.10</b>
<b>200 Personnel Services – Employee Benefits</b>				
210 Group Insurance – Contracted Provider				2,551.24
220 Social Security Contributions				85,631.74
230 PSERS Retirement Contributions				397,230.23
260 Workers' Compensation				7,409.85
270 Group Insurance – Self-Insurance				280,281.90
<b>Total Personnel Services – Employee Benefits</b>				<b>\$773,104.96</b>
<b>300 Purchased Professional and Technical Services</b>				
330 Other Professional Services			116,435.59	119,900.59
350 Security / Safety Services				3,790.89
<b>Total Purchased Professional and Technical Services</b>			<b>\$116,435.59</b>	<b>\$123,691.48</b>
<b>400 Purchased Property Services</b>				
410 Cleaning Services				41,840.98
420 Utility Services				110,779.62
430 Repairs and Maintenance Services				267,435.23
440 Rentals				8,012.50
460 Extermination Services				4,600.00
<b>Total Purchased Property Services</b>				<b>\$432,668.33</b>
<b>500 Other Purchased Services</b>				
523 General Property and Liability Insurance				170,383.00
530 Communications				33,984.83
549 Other Advertising/Public Relations				3,535.24
<b>Total Other Purchased Services</b>				<b>\$207,903.07</b>
<b>600 Supplies</b>				
610 General Supplies	85,026.14	56,346.49	29,117.57	170,490.20
620 Energy				721,150.07
<b>Total Supplies</b>	<b>\$85,026.14</b>	<b>\$56,346.49</b>	<b>\$29,117.57</b>	<b>\$891,640.27</b>
<b>700 Property</b>				
752 Capital Equipment – Original and Additional			175,080.00	229,767.75
<b>Total Property</b>			<b>\$175,080.00</b>	<b>\$229,767.75</b>
<b>Total 2620 Operation of Buildings Services</b>	<b>\$85,026.14</b>	<b>\$56,346.49</b>	<b>\$320,633.16</b>	<b>\$3,821,251.96</b>

General Fund (10)

	<u>Elementary</u>	<u>Secondary</u>	<u>Federal</u>	<u>Total</u>
<b>2630 Care and Upkeep of Grounds Services</b>				
<b>400 <u>Purchased Property Services</u></b>				
410 Cleaning Services				4,930.30
440 Rentals				8,489.23
<b>Total Purchased Property Services</b>				<b>\$13,419.53</b>
<b>600 <u>Supplies</u></b>				
610 General Supplies	24,300.58	22,698.70		46,999.28
<b>Total Supplies</b>	<b>\$24,300.58</b>	<b>\$22,698.70</b>		<b>\$46,999.28</b>
<b>700 <u>Property</u></b>				
762 Capitalized Equipment - Replacement				61,366.92
<b>Total Property</b>				<b>\$61,366.92</b>
<b>Total 2630 Care and Upkeep of Grounds Services</b>	<b>\$24,300.58</b>	<b>\$22,698.70</b>		<b>\$121,785.73</b>

LEA : 113364403 Manheim Central SD

Printed 2/3/2023 11:30:21 AM

General Fund (10)

2640 Care and Upkeep of Equipment Services

Elementary

Secondary

Federal

Total

600 Supplies

620 Energy

795.94

**Total Supplies**

**\$795.94**

**Total 2640 Care and Upkeep of Equipment Services**

**\$795.94**

**General Fund (10)**

	<u>Elementary</u>	<u>Secondary</u>	<u>Federal</u>	<u>Total</u>
<b>2650 Vehicle Operation and Maintenance Services (Other Than Student Transportation Vehicles)</b>				
<b>400 <u>Purchased Property Services</u></b>				
430 Repairs and Maintenance Services				3,078.03
<b>Total Purchased Property Services</b>				<b>\$3,078.03</b>
<b>500 <u>Other Purchased Services</u></b>				
522 Automotive Liability Insurance				11,334.00
<b>Total Other Purchased Services</b>				<b>\$11,334.00</b>
<b>600 <u>Supplies</u></b>				
610 General Supplies	65.35	65.35		130.70
620 Energy				11,790.58
<b>Total Supplies</b>	<b>\$65.35</b>	<b>\$65.35</b>		<b>\$11,921.28</b>
<b>Total 2650 Vehicle Operation and Maintenance Services (Other Than Student Transportation Vehicles)</b>	<b>\$65.35</b>	<b>\$65.35</b>		<b>\$26,333.31</b>

General Fund (10)

2660 Safety and Security Services

Elementary

Secondary

Federal

Total

300 Purchased Professional and Technical Services

350 Security / Safety Services

78,844.62

390 Other Purchased Professional and Technical Services

500.00

**Total Purchased Professional and Technical Services**

**\$79,344.62**

600 Supplies

610 General Supplies

753.49

753.51

1,507.00

**Total Supplies**

**\$753.49**

**\$753.51**

**\$1,507.00**

**Total 2660 Safety and Security Services**

**\$753.49**

**\$753.51**

**\$80,851.62**

**General Fund (10)**

	<u>Elementary</u>	<u>Secondary</u>	<u>Federal</u>	<u>Total</u>
<b>2700 Student Transportation Services</b>				
<b>100 Personnel Services – Salaries</b>				
100 Personnel Services – Salaries				57,151.49
<b>Total Personnel Services – Salaries</b>				<b>\$57,151.49</b>
<b>200 Personnel Services – Employee Benefits</b>				
210 Group Insurance – Contracted Provider				109.68
220 Social Security Contributions				4,139.77
230 PSERS Retirement Contributions				19,979.41
260 Workers' Compensation				375.86
270 Group Insurance – Self-Insurance				17,264.88
<b>Total Personnel Services – Employee Benefits</b>				<b>\$41,869.60</b>
<b>300 Purchased Professional and Technical Services</b>				
340 Technical Services				7,400.00
<b>Total Purchased Professional and Technical Services</b>				<b>\$7,400.00</b>
<b>400 Purchased Property Services</b>				
430 Repairs and Maintenance Services				255.89
<b>Total Purchased Property Services</b>				<b>\$255.89</b>
<b>500 Other Purchased Services</b>				
513 Contracted Carriers			43,266.62	2,840,261.58
580 Travel				69.21
<b>Total Other Purchased Services</b>			<b>\$43,266.62</b>	<b>\$2,840,330.79</b>
<b>600 Supplies</b>				
610 General Supplies				316,437.75
620 Energy				17,432.60
650 Supplies & Fees – Technology Related				121,783.46
<b>Total Supplies</b>				<b>\$455,653.81</b>
<b>Total 2700 Student Transportation Services</b>			<b>\$43,266.62</b>	<b>\$3,402,661.58</b>

General Fund (10)

	<u>Elementary</u>	<u>Secondary</u>	<u>Federal</u>	<u>Total</u>
<b>2710 Supervision of Student Transportation Services</b>				
<b>100 Personnel Services – Salaries</b>				
100 Personnel Services – Salaries				57,151.49
<b>Total Personnel Services – Salaries</b>				<b>\$57,151.49</b>
<b>200 Personnel Services – Employee Benefits</b>				
210 Group Insurance – Contracted Provider				109.68
220 Social Security Contributions				4,139.77
230 PSERS Retirement Contributions				19,979.41
260 Workers' Compensation				375.86
270 Group Insurance – Self-Insurance				17,264.88
<b>Total Personnel Services – Employee Benefits</b>				<b>\$41,869.60</b>
<b>300 Purchased Professional and Technical Services</b>				
340 Technical Services				7,400.00
<b>Total Purchased Professional and Technical Services</b>				<b>\$7,400.00</b>
<b>500 Other Purchased Services</b>				
580 Travel				69.21
<b>Total Other Purchased Services</b>				<b>\$69.21</b>
<b>600 Supplies</b>				
610 General Supplies				5,227.76
<b>Total Supplies</b>				<b>\$5,227.76</b>
<b>Total 2710 Supervision of Student Transportation Services</b>				<b>\$111,718.06</b>

General Fund (10)

2711 Supervision of Student Transportation Services – Head of Component

Elementary

Secondary

Federal

Total

100 Personnel Services – Salaries

100 Personnel Services – Salaries

57,151.49

**Total Personnel Services – Salaries**

**\$57,151.49**

200 Personnel Services – Employee Benefits

210 Group Insurance – Contracted Provider

109.68

220 Social Security Contributions

4,139.77

230 PSERS Retirement Contributions

19,979.41

260 Workers' Compensation

375.86

270 Group Insurance – Self-Insurance

17,264.88

**Total Personnel Services – Employee Benefits**

**\$41,869.60**

500 Other Purchased Services

580 Travel

69.21

**Total Other Purchased Services**

**\$69.21**

600 Supplies

610 General Supplies

4,132.76

**Total Supplies**

**\$4,132.76**

**Total 2711 Supervision of Student Transportation Services – Head of Component**

**\$103,223.06**

General Fund (10)

	<u>Elementary</u>	<u>Secondary</u>	<u>Federal</u>	<u>Total</u>
<b>2719 Supervision of Student Transportation Services – All Other Supervision</b>				
<b>300 <u>Purchased Professional and Technical Services</u></b>				
340 Technical Services				7,400.00
<b>Total Purchased Professional and Technical Services</b>				<b>\$7,400.00</b>
<b>600 <u>Supplies</u></b>				
610 General Supplies				1,095.00
<b>Total Supplies</b>				<b>\$1,095.00</b>
<b>Total 2719 Supervision of Student Transportation Services – All Other Supervision</b>				<b>\$8,495.00</b>

General Fund (10)

	<u>Elementary</u>	<u>Secondary</u>	<u>Federal</u>	<u>Total</u>
<b>2720 Vehicle Operation Services</b>				
<b>400 <u>Purchased Property Services</u></b>				
430 Repairs and Maintenance Services				255.89
<b>Total Purchased Property Services</b>				<b>\$255.89</b>
<b>500 <u>Other Purchased Services</u></b>				
513 Contracted Carriers			43,266.62	2,292,023.93
<b>Total Other Purchased Services</b>			<b>\$43,266.62</b>	<b>\$2,292,023.93</b>
<b>600 <u>Supplies</u></b>				
610 General Supplies				311,209.99
620 Energy				17,432.60
650 Supplies & Fees – Technology Related				121,783.46
<b>Total Supplies</b>				<b>\$450,426.05</b>
<b>Total 2720 Vehicle Operation Services</b>			<b>\$43,266.62</b>	<b>\$2,742,705.87</b>

General Fund (10)

2750 Nonpublic Transportation

Elementary

Secondary

Federal

Total

500 Other Purchased Services

513 Contracted Carriers

548,237.65

**Total Other Purchased Services**

**\$548,237.65**

**Total 2750 Nonpublic Transportation**

**\$548,237.65**

**General Fund (10)**

	<u>Elementary</u>	<u>Secondary</u>	<u>Federal</u>	<u>Total</u>
<b>2800 Support Services – Central</b>				
<b>100 Personnel Services – Salaries</b>				
100 Personnel Services – Salaries				554,443.00
<b>Total Personnel Services – Salaries</b>				<b>\$554,443.00</b>
<b>200 Personnel Services – Employee Benefits</b>				
210 Group Insurance – Contracted Provider				1,284.40
220 Social Security Contributions				41,358.81
230 PSERS Retirement Contributions				188,070.05
240 Tuition Reimbursement				6,956.96
260 Workers' Compensation				3,892.93
270 Group Insurance – Self-Insurance				100,092.94
299 All Other Employee Benefits				2,829.23
<b>Total Personnel Services – Employee Benefits</b>				<b>\$344,485.32</b>
<b>300 Purchased Professional and Technical Services</b>				
330 Other Professional Services				1,160.56
340 Technical Services				128,964.08
360 Employee Training and Development Services				12,531.99
<b>Total Purchased Professional and Technical Services</b>				<b>\$142,656.63</b>
<b>400 Purchased Property Services</b>				
430 Repairs and Maintenance Services				14,036.95
440 Rentals				(10,892.26)
<b>Total Purchased Property Services</b>				<b>\$3,144.69</b>
<b>500 Other Purchased Services</b>				
530 Communications				1,154.75
549 Other Advertising/Public Relations				1,957.60
580 Travel				2,507.71
<b>Total Other Purchased Services</b>				<b>\$5,620.06</b>
<b>600 Supplies</b>				
610 General Supplies				22,400.47
650 Supplies & Fees – Technology Related			18,535.87	813,359.45
<b>Total Supplies</b>			<b>\$18,535.87</b>	<b>\$835,759.92</b>
<b>700 Property</b>				
766 Capitalized Technology Equipment – Replacement				24,906.00
<b>Total Property</b>				<b>\$24,906.00</b>
<b>800 Other Objects</b>				
810 Dues and Fees				250.00
<b>Total Other Objects</b>				<b>\$250.00</b>
<b>Total 2800 Support Services – Central</b>			<b>\$18,535.87</b>	<b>\$1,911,265.62</b>

**General Fund (10)**

	<u>Elementary</u>	<u>Secondary</u>	<u>Federal</u>	<u>Total</u>
<b>2820 Information Services</b>				
<b>100 Personnel Services – Salaries</b>				
100 Personnel Services – Salaries				439,612.90
<b>Total Personnel Services – Salaries</b>				<b>\$439,612.90</b>
<b>200 Personnel Services – Employee Benefits</b>				
210 Group Insurance – Contracted Provider				993.10
220 Social Security Contributions				32,889.10
230 PSERS Retirement Contributions				153,169.11
260 Workers' Compensation				2,813.72
270 Group Insurance – Self-Insurance				75,426.48
299 All Other Employee Benefits				1,500.00
<b>Total Personnel Services – Employee Benefits</b>				<b>\$266,791.51</b>
<b>300 Purchased Professional and Technical Services</b>				
340 Technical Services				128,964.08
<b>Total Purchased Professional and Technical Services</b>				<b>\$128,964.08</b>
<b>400 Purchased Property Services</b>				
430 Repairs and Maintenance Services				14,036.95
440 Rentals				(10,892.26)
<b>Total Purchased Property Services</b>				<b>\$3,144.69</b>
<b>500 Other Purchased Services</b>				
530 Communications				1,154.75
580 Travel				514.71
<b>Total Other Purchased Services</b>				<b>\$1,669.46</b>
<b>600 Supplies</b>				
610 General Supplies				21,130.22
650 Supplies & Fees – Technology Related			18,535.87	796,100.44
<b>Total Supplies</b>			<b>\$18,535.87</b>	<b>\$817,230.66</b>
<b>700 Property</b>				
766 Capitalized Technology Equipment – Replacement				24,906.00
<b>Total Property</b>				<b>\$24,906.00</b>
<b>Total 2820 Information Services</b>			<b>\$18,535.87</b>	<b>\$1,682,319.30</b>

**General Fund (10)**

	<u>Elementary</u>	<u>Secondary</u>	<u>Federal</u>	<u>Total</u>
<b>2821 Supervision of Information Services</b>				
<b>100 Personnel Services – Salaries</b>				
100 Personnel Services – Salaries				439,612.90
<b>Total Personnel Services – Salaries</b>				<b>\$439,612.90</b>
<b>200 Personnel Services – Employee Benefits</b>				
210 Group Insurance – Contracted Provider				993.10
220 Social Security Contributions				32,889.10
230 PSERS Retirement Contributions				153,169.11
260 Workers' Compensation				2,813.72
270 Group Insurance – Self-Insurance				75,426.48
299 All Other Employee Benefits				1,500.00
<b>Total Personnel Services – Employee Benefits</b>				<b>\$266,791.51</b>
<b>300 Purchased Professional and Technical Services</b>				
340 Technical Services				128,964.08
<b>Total Purchased Professional and Technical Services</b>				<b>\$128,964.08</b>
<b>400 Purchased Property Services</b>				
430 Repairs and Maintenance Services				14,036.95
440 Rentals				(10,892.26)
<b>Total Purchased Property Services</b>				<b>\$3,144.69</b>
<b>500 Other Purchased Services</b>				
530 Communications				1,154.75
580 Travel				514.71
<b>Total Other Purchased Services</b>				<b>\$1,669.46</b>
<b>600 Supplies</b>				
610 General Supplies				21,130.22
650 Supplies & Fees – Technology Related			18,535.87	796,100.44
<b>Total Supplies</b>			<b>\$18,535.87</b>	<b>\$817,230.66</b>
<b>700 Property</b>				
766 Capitalized Technology Equipment – Replacement				24,906.00
<b>Total Property</b>				<b>\$24,906.00</b>
<b>Total 2821 Supervision of Information Services</b>			<b>\$18,535.87</b>	<b>\$1,682,319.30</b>

**General Fund (10)**

**2830 Staff Services**

Elementary                      Secondary                      Federal                      Total

<b>100</b>	<b><u>Personnel Services – Salaries</u></b>				
	100 Personnel Services – Salaries				114,830.10
<b>Total Personnel Services – Salaries</b>					<b>\$114,830.10</b>
<b>200</b>	<b><u>Personnel Services – Employee Benefits</u></b>				
	210 Group Insurance – Contracted Provider				291.30
	220 Social Security Contributions				8,469.71
	230 PSERS Retirement Contributions				34,900.94
	240 Tuition Reimbursement				6,956.96
	260 Workers' Compensation				1,079.21
	270 Group Insurance – Self-Insurance				24,666.46
	299 All Other Employee Benefits				1,329.23
<b>Total Personnel Services – Employee Benefits</b>					<b>\$77,693.81</b>
<b>300</b>	<b><u>Purchased Professional and Technical Services</u></b>				
	330 Other Professional Services				1,160.56
	360 Employee Training and Development Services				12,531.99
<b>Total Purchased Professional and Technical Services</b>					<b>\$13,692.55</b>
<b>500</b>	<b><u>Other Purchased Services</u></b>				
	549 Other Advertising/Public Relations				1,957.60
	580 Travel				1,993.00
<b>Total Other Purchased Services</b>					<b>\$3,950.60</b>
<b>600</b>	<b><u>Supplies</u></b>				
	610 General Supplies				1,270.25
	650 Supplies & Fees – Technology Related				17,259.01
<b>Total Supplies</b>					<b>\$18,529.26</b>
<b>800</b>	<b><u>Other Objects</u></b>				
	810 Dues and Fees				250.00
<b>Total Other Objects</b>					<b>\$250.00</b>
<b>Total 2830 Staff Services</b>					<b>\$228,946.32</b>

General Fund (10)

	<u>Elementary</u>	<u>Secondary</u>	<u>Federal</u>	<u>Total</u>
<b>2831 Supervision of Staff Services</b>				
<b>100 Personnel Services – Salaries</b>				
100 Personnel Services – Salaries				102,602.55
<b>Total Personnel Services – Salaries</b>				<b>\$102,602.55</b>
<b>200 Personnel Services – Employee Benefits</b>				
210 Group Insurance – Contracted Provider				291.30
220 Social Security Contributions				7,534.31
230 PSERS Retirement Contributions				34,900.94
260 Workers' Compensation				649.53
270 Group Insurance – Self-Insurance				24,666.46
299 All Other Employee Benefits				1,329.23
<b>Total Personnel Services – Employee Benefits</b>				<b>\$69,371.77</b>
<b>300 Purchased Professional and Technical Services</b>				
330 Other Professional Services				1,160.56
<b>Total Purchased Professional and Technical Services</b>				<b>\$1,160.56</b>
<b>500 Other Purchased Services</b>				
549 Other Advertising/Public Relations				1,957.60
<b>Total Other Purchased Services</b>				<b>\$1,957.60</b>
<b>600 Supplies</b>				
610 General Supplies				1,270.25
650 Supplies & Fees – Technology Related				17,259.01
<b>Total Supplies</b>				<b>\$18,529.26</b>
<b>800 Other Objects</b>				
810 Dues and Fees				250.00
<b>Total Other Objects</b>				<b>\$250.00</b>
<b>Total 2831 Supervision of Staff Services</b>				<b>\$193,871.74</b>

General Fund (10)

	<u>Elementary</u>	<u>Secondary</u>	<u>Federal</u>	<u>Total</u>
<b>2834 Staff Development Services – Non-Instructional, Certified Staff Only</b>				
<b>200 Personnel Services – Employee Benefits</b>				
240 Tuition Reimbursement				152.96
<b>Total Personnel Services – Employee Benefits</b>				<b>\$152.96</b>
<b>300 Purchased Professional and Technical Services</b>				
360 Employee Training and Development Services				1,458.47
<b>Total Purchased Professional and Technical Services</b>				<b>\$1,458.47</b>
<b>500 Other Purchased Services</b>				
580 Travel				1,993.00
<b>Total Other Purchased Services</b>				<b>\$1,993.00</b>
<b>Total 2834 Staff Development Services – Non-Instructional, Certified Staff Only</b>				<b>\$3,604.43</b>

General Fund (10)

	<u>Elementary</u>	<u>Secondary</u>	<u>Federal</u>	<u>Total</u>
<b>2836 Staff Development Services – Non-Instructional, Non-Certified Staff Only</b>				
<b>200 Personnel Services – Employee Benefits</b>				
240 Tuition Reimbursement				6,804.00
<b>Total Personnel Services – Employee Benefits</b>				<b>\$6,804.00</b>
<b>300 Purchased Professional and Technical Services</b>				
360 Employee Training and Development Services				11,073.52
<b>Total Purchased Professional and Technical Services</b>				<b>\$11,073.52</b>
<b>Total 2836 Staff Development Services – Non-Instructional, Non-Certified Staff Only</b>				<b>\$17,877.52</b>

General Fund (10)

2839 Other Staff Services

Elementary

Secondary

Federal

Total

100 Personnel Services – Salaries

100 Personnel Services – Salaries

12,227.55

**Total Personnel Services – Salaries**

**\$12,227.55**

200 Personnel Services – Employee Benefits

220 Social Security Contributions

935.40

260 Workers' Compensation

429.68

**Total Personnel Services – Employee Benefits**

**\$1,365.08**

**Total 2839 Other Staff Services**

**\$13,592.63**

General Fund (10)

	<u>Elementary</u>	<u>Secondary</u>	<u>Federal</u>	<u>Total</u>
<b>2900 Other Support Services</b>				
<b>500 Other Purchased Services</b>				
595 IU Payments By Withholding				31,196.38
<b>Total Other Purchased Services</b>				<b>\$31,196.38</b>
<b>800 Other Objects</b>				
810 Dues and Fees				10,857.84
<b>Total Other Objects</b>				<b>\$10,857.84</b>
<b>Total 2900 Other Support Services</b>				<b>\$42,054.22</b>

General Fund (10)

2910 Support Services Not Listed Elsewhere In the 2000 Series

Elementary

Secondary

Federal

Total

500 Other Purchased Services

595 IU Payments By Withholding

31,196.38

**Total Other Purchased Services**

**\$31,196.38**

800 Other Objects

810 Dues and Fees

10,857.84

**Total Other Objects**

**\$10,857.84**

**Total 2910 Support Services Not Listed Elsewhere In the 2000 Series**

**\$42,054.22**

**General Fund (10)**

<b>3000 Operation of Non-Instructional Services</b>	<b><u>Total</u></b>
<b>100 Personnel Services – Salaries</b>	
100 Personnel Services – Salaries	595,189.88
<b>Total Personnel Services – Salaries</b>	<b>\$595,189.88</b>
<b>200 Personnel Services – Employee Benefits</b>	
210 Group Insurance – Contracted Provider	36.12
220 Social Security Contributions	45,063.62
230 PSERS Retirement Contributions	166,154.62
260 Workers’ Compensation	2,096.74
270 Group Insurance – Self-Insurance	2,449.20
<b>Total Personnel Services – Employee Benefits</b>	<b>\$215,800.30</b>
<b>300 Purchased Professional and Technical Services</b>	
330 Other Professional Services	900.00
350 Security / Safety Services	4,806.20
390 Other Purchased Professional and Technical Services	160,985.00
<b>Total Purchased Professional and Technical Services</b>	<b>\$166,691.20</b>
<b>400 Purchased Property Services</b>	
440 Rentals	103,855.46
<b>Total Purchased Property Services</b>	<b>\$103,855.46</b>
<b>500 Other Purchased Services</b>	
510 Student Transportation Services	78,874.30
520 Insurance – General	22,996.00
<b>Total Other Purchased Services</b>	<b>\$101,870.30</b>
<b>600 Supplies</b>	
610 General Supplies	183,696.04
<b>Total Supplies</b>	<b>\$183,696.04</b>
<b>700 Property</b>	
752 Capital Equipment – Original and Additional	7,872.00
<b>Total Property</b>	<b>\$7,872.00</b>
<b>800 Other Objects</b>	
810 Dues and Fees	25,243.63
890 Miscellaneous Expenditures	2,777.38
<b>Total Other Objects</b>	<b>\$28,021.01</b>
<b>Total 3000 Operation of Non-Instructional Services</b>	<b>\$1,402,996.19</b>

**General Fund (10)**

	<u>Elementary</u>	<u>Secondary</u>	<u>Federal</u>	<u>Total</u>
<b>3200 Student Activities</b>				
<b>100 Personnel Services – Salaries</b>				
100 Personnel Services – Salaries				593,741.27
<b>Total Personnel Services – Salaries</b>				<b>\$593,741.27</b>
<b>200 Personnel Services – Employee Benefits</b>				
210 Group Insurance – Contracted Provider				36.12
220 Social Security Contributions				44,956.98
230 PSERS Retirement Contributions				165,648.60
260 Workers' Compensation				2,096.74
270 Group Insurance – Self-Insurance				2,449.20
<b>Total Personnel Services – Employee Benefits</b>				<b>\$215,187.64</b>
<b>300 Purchased Professional and Technical Services</b>				
330 Other Professional Services				900.00
350 Security / Safety Services				4,806.20
390 Other Purchased Professional and Technical Services				134,883.98
<b>Total Purchased Professional and Technical Services</b>				<b>\$140,590.18</b>
<b>400 Purchased Property Services</b>				
440 Rentals				103,855.46
<b>Total Purchased Property Services</b>				<b>\$103,855.46</b>
<b>500 Other Purchased Services</b>				
510 Student Transportation Services				78,874.30
520 Insurance – General				22,996.00
<b>Total Other Purchased Services</b>				<b>\$101,870.30</b>
<b>600 Supplies</b>				
610 General Supplies				179,607.36
<b>Total Supplies</b>				<b>\$179,607.36</b>
<b>700 Property</b>				
752 Capital Equipment – Original and Additional				7,872.00
<b>Total Property</b>				<b>\$7,872.00</b>
<b>800 Other Objects</b>				
810 Dues and Fees				25,243.63
<b>Total Other Objects</b>				<b>\$25,243.63</b>
<b>Total 3200 Student Activities</b>				<b>\$1,367,967.84</b>

**General Fund (10)**

	<u>Elementary</u>	<u>Secondary</u>	<u>Federal</u>	<u>Total</u>
<b>3300 Community Services</b>				
<b>100 Personnel Services – Salaries</b>				
100 Personnel Services – Salaries			1,448.61	1,448.61
<b>Total Personnel Services – Salaries</b>			<b>\$1,448.61</b>	<b>\$1,448.61</b>
<b>200 Personnel Services – Employee Benefits</b>				
220 Social Security Contributions			106.64	106.64
230 PSERS Retirement Contributions			506.02	506.02
<b>Total Personnel Services – Employee Benefits</b>			<b>\$612.66</b>	<b>\$612.66</b>
<b>300 Purchased Professional and Technical Services</b>				
390 Other Purchased Professional and Technical Services				26,101.02
<b>Total Purchased Professional and Technical Services</b>				<b>\$26,101.02</b>
<b>600 Supplies</b>				
610 General Supplies			4,088.68	4,088.68
<b>Total Supplies</b>			<b>\$4,088.68</b>	<b>\$4,088.68</b>
<b>800 Other Objects</b>				
890 Miscellaneous Expenditures				2,777.38
<b>Total Other Objects</b>				<b>\$2,777.38</b>
<b>Total 3300 Community Services</b>			<b>\$6,149.95</b>	<b>\$35,028.35</b>

**General Fund (10)**

**5000 Other Expenditures and Financing Uses**

**Total**

**800 Other Objects**

830 Interest 3,114,757.00

**Total Other Objects \$3,114,757.00**

**900 Other Uses of Funds**

910 Redemption of Principal 4,652,970.53

932 Capital Reserve Fund Transfers Applicable To Fund 32 209,914.43

**Total Other Uses of Funds \$4,862,884.96**

**Total 5000 Other Expenditures and Financing Uses \$7,977,641.96**

General Fund (10)

	<u>Elementary</u>	<u>Secondary</u>	<u>Federal</u>	<u>Total</u>
<b>5100 Debt Service / Other Expenditures and Financing Uses</b>				
<b>800 Other Objects</b>				
830 Interest			9,078.45	3,114,757.00
<b>Total Other Objects</b>			<b>\$9,078.45</b>	<b>\$3,114,757.00</b>
<b>900 Other Uses of Funds</b>				
910 Redemption of Principal			340,594.90	4,652,970.53
<b>Total Other Uses of Funds</b>			<b>\$340,594.90</b>	<b>\$4,652,970.53</b>
<b>Total 5100 Debt Service / Other Expenditures and Financing Uses</b>			<b>\$349,673.35</b>	<b>\$7,767,727.53</b>

General Fund (10)

	<u>Elementary</u>	<u>Secondary</u>	<u>Federal</u>	<u>Total</u>
<b>5110 Debt Service</b>				
<b>800 Other Objects</b>				
830 Interest				3,069,843.39
<b>Total Other Objects</b>				<b>\$3,069,843.39</b>
<b>900 Other Uses of Funds</b>				
910 Redemption of Principal				3,870,000.00
<b>Total Other Uses of Funds</b>				<b>\$3,870,000.00</b>
<b>Total 5110 Debt Service</b>				<b>\$6,939,843.39</b>

General Fund (10)

	<u>Elementary</u>	<u>Secondary</u>	<u>Federal</u>	<u>Total</u>
<b>5140 Leases</b>				
<b>800 Other Objects</b>				
830 Interest			9,078.45	44,913.61
<b>Total Other Objects</b>			<b>\$9,078.45</b>	<b>\$44,913.61</b>
<b>900 Other Uses of Funds</b>				
910 Redemption of Principal			340,594.90	782,970.53
<b>Total Other Uses of Funds</b>			<b>\$340,594.90</b>	<b>\$782,970.53</b>
<b>Total 5140 Leases</b>			<b>\$349,673.35</b>	<b>\$827,884.14</b>

General Fund (10)

5200 Interfund Transfers – Out

Elementary

Secondary

Federal

Total

900 Other Uses of Funds

932 Capital Reserve Fund Transfers Applicable To Fund 32

209,914.43

**Total Other Uses of Funds**

**\$209,914.43**

**Total 5200 Interfund Transfers – Out**

**\$209,914.43**

LEA : 113364403 Manheim Central SD

Printed 2/3/2023 11:30:40 AM

General Fund (10)

5230 Capital Projects Fund Transfers

Elementary

Secondary

Federal

Total

900 Other Uses of Funds

932 Capital Reserve Fund Transfers Applicable To Fund 32

209,914.43

**Total Other Uses of Funds**

**\$209,914.43**

**Total 5230 Capital Projects Fund Transfers**

**\$209,914.43**

LEA : 113364403 Manheim Central SD

Printed 2/3/2023 11:30:25 AM

**Capital Reserve Fund - § 1431 (32)**

**2000 Support Services**

**Total**

**600 Supplies**

610 General Supplies

11,894.00

**Total Supplies**

**\$11,894.00**

**700 Property**

752 Capital Equipment – Original and Additional

326,272.54

**Total Property**

**\$326,272.54**

**Total 2000 Support Services**

**\$338,166.54**

Capital Reserve Fund - § 1431 (32)

2600 Operation and Maintenance of Plant Services

Elementary

Secondary

Federal

Total

600 Supplies

610 General Supplies

11,894.00

11,894.00

**Total Supplies**

**\$11,894.00**

**\$11,894.00**

700 Property

752 Capital Equipment – Original and Additional

326,272.54

**Total Property**

**\$326,272.54**

**Total 2600 Operation and Maintenance of Plant Services**

**\$11,894.00**

**\$338,166.54**

LEA : 113364403 Manheim Central SD

Printed 2/3/2023 11:30:25 AM

Capital Reserve Fund - § 1431 (32)

2620 Operation of Buildings Services

	<u>Elementary</u>	<u>Secondary</u>	<u>Federal</u>	<u>Total</u>
<b>600 Supplies</b>				
610 General Supplies		11,894.00		11,894.00
<b>Total Supplies</b>		<b>\$11,894.00</b>		<b>\$11,894.00</b>
<b>700 Property</b>				
752 Capital Equipment – Original and Additional				326,272.54
<b>Total Property</b>				<b>\$326,272.54</b>
<b>Total 2620 Operation of Buildings Services</b>		<b>\$11,894.00</b>		<b>\$338,166.54</b>

LEA : 113364403 Manheim Central SD

Printed 2/3/2023 11:30:34 AM

**Capital Reserve Fund - § 1431 (32)**

**4000 Facilities Acquisition, Construction and Improvement Services**

**Total**

**400 Purchased Property Services**

450 Construction Services

265,360.27

**Total Purchased Property Services**

**\$265,360.27**

**Total 4000 Facilities Acquisition, Construction and Improvement Services**

**\$265,360.27**

LEA : 113364403 Manheim Central SD

Printed 2/3/2023 11:30:34 AM

Capital Reserve Fund - § 1431 (32)

4600 Existing Building Improvement Services

Elementary

Secondary

Federal

Total

400 Purchased Property Services

450 Construction Services

229,491.50

265,360.27

**Total Purchased Property Services**

**\$229,491.50**

**\$265,360.27**

**Total 4600 Existing Building Improvement Services**

**\$229,491.50**

**\$265,360.27**

**Other Capital Projects Fund (39)**

**2000 Support Services**

**Total**

**400 Purchased Property Services**

440 Rentals 722,078.00

**Total Purchased Property Services \$722,078.00**

**800 Other Objects**

810 Dues and Fees 381,248.50

**Total Other Objects \$381,248.50**

**Total 2000 Support Services \$1,103,326.50**

LEA : 113364403 Manheim Central SD

Printed 2/3/2023 11:30:28 AM

Other Capital Projects Fund (39)

2300 Support Services – Administration

Elementary

Secondary

Federal

Total

800 Other Objects

810 Dues and Fees

381,248.50

**Total Other Objects**

**\$381,248.50**

**Total 2300 Support Services – Administration**

**\$381,248.50**

LEA : 113364403 Manheim Central SD

Printed 2/3/2023 11:30:28 AM

Other Capital Projects Fund (39)

2390 Other Administration Services

Elementary

Secondary

Federal

Total

800 Other Objects

810 Dues and Fees

381,248.50

**Total Other Objects**

**\$381,248.50**

**Total 2390 Other Administration Services**

**\$381,248.50**

LEA : 113364403 Manheim Central SD

Printed 2/3/2023 11:30:28 AM

Other Capital Projects Fund (39)

2800 Support Services – Central

Elementary

Secondary

Federal

Total

400 Purchased Property Services

440 Rentals

722,078.00

**Total Purchased Property Services**

**\$722,078.00**

**Total 2800 Support Services – Central**

**\$722,078.00**

Other Capital Projects Fund (39)

2820 Information Services

400 Purchased Property Services

440 Rentals

Elementary

Secondary

Federal

Total

722,078.00

**Total Purchased Property Services**

**\$722,078.00**

**Total 2820 Information Services**

**\$722,078.00**

LEA : 113364403 Manheim Central SD

Printed 2/3/2023 11:30:28 AM

Other Capital Projects Fund (39)

2821 Supervision of Information Services

Elementary

Secondary

Federal

Total

400 Purchased Property Services

440 Rentals

722,078.00

**Total Purchased Property Services**

**\$722,078.00**

**Total 2821 Supervision of Information Services**

**\$722,078.00**

**Other Capital Projects Fund (39)**

**4000 Facilities Acquisition, Construction and Improvement Services**

**Total**

**300 Purchased Professional and Technical Services**

330 Other Professional Services

22,115,227.98

**Total Purchased Professional and Technical Services**

**\$22,115,227.98**

**Total 4000 Facilities Acquisition, Construction and Improvement Services**

**\$22,115,227.98**

Other Capital Projects Fund (39)

4400 Architecture and Engineering Services / Educational Specifications – Improvements

Elementary

Secondary

Federal

Total

300 Purchased Professional and Technical Services

330 Other Professional Services

45,233.06

**Total Purchased Professional and Technical Services**

**\$45,233.06**

**Total 4400 Architecture and Engineering Services / Educational Specifications – Improvements**

**\$45,233.06**

Other Capital Projects Fund (39)

	<u>Elementary</u>	<u>Secondary</u>	<u>Federal</u>	<u>Total</u>
<b>4500 Building Acquisition and Construction Services – Original and Additional</b>				
<b>300 <u>Purchased Professional and Technical Services</u></b>				
330 Other Professional Services				54.50
<b>Total Purchased Professional and Technical Services</b>				<b>\$54.50</b>
<b>Total 4500 Building Acquisition and Construction Services – Original and Additional</b>				<b>\$54.50</b>

Other Capital Projects Fund (39)

4600 Existing Building Improvement Services

Elementary

Secondary

Federal

Total

300 Purchased Professional and Technical Services

330 Other Professional Services

22,069,940.42

**Total Purchased Professional and Technical Services**

**\$22,069,940.42**

**Total 4600 Existing Building Improvement Services**

**\$22,069,940.42**

	<u>General Fund(10)</u>	<u>Student Sponsored Activity Fund(21)</u>	<u>Public Purpose Trust(27)</u>	<u>Other Compt Approved (28)</u>	<u>Athletic / Activity(29)</u>
<b>1000 Instruction</b>					
1100 Regular Programs - Elementary / Secondary	23,862,561.23				
1200 Special Programs - Elementary / Secondary	8,633,869.30				
1300 Vocational Education	1,492,676.51				
1400 Other Instructional Programs - Elementary / Secondary	203,779.51				
1500 Nonpublic School Programs	30,140.04				
1800 Pre-Kindergarten	90,563.09				
<b>Total Instruction</b>	<b>\$34,313,589.68</b>				
<b>2000 Support Services</b>					
2100 Support Services - Students	1,766,627.18				
2200 Support Services - Instructional Staff	1,642,802.94				
2300 Support Services - Administration	2,844,970.12				
2400 Support Services - Pupil Health	507,418.49				
2500 Support Services - Business	899,430.35				
2600 Operation and Maintenance of Plant Services	4,396,919.09				
2700 Student Transportation Services	3,402,661.58				
2800 Support Services - Central	1,911,265.62				
2900 Other Support Services	42,054.22				
<b>Total Support Services</b>	<b>\$17,414,149.59</b>				
<b>3000 Operation of Non-Instructional Services</b>					
3200 Student Activities	1,367,967.84				
3300 Community Services	35,028.35				
<b>Total Operation of Non-Instructional Services</b>	<b>\$1,402,996.19</b>				
<b>4000 Facilities Acquisition, Construction and Improvement Services</b>					
4400 Architecture and Engineering Services / Educational Specifications - Improvements					
4500 Building Acquisition and Construction Services - Original and Additional					
4600 Existing Building Improvement Services					
<b>Total Facilities Acquisition, Construction and Improvement Services</b>					
<b>5000 Other Expenditures and Financing Uses</b>					
5100 Debt Service / Other Expenditures and Financing Uses	7,767,727.53				
5200 Interfund Transfers - Out	209,914.43				
<b>Total Other Expenditures and Financing Uses</b>	<b>\$7,977,641.96</b>				
<b>TOTAL ACTUAL EXPENDITURES &amp; OTHER FINANCING USES</b>	<b>\$61,108,377.42</b>				

	<u>Capital Reserve (690.1850)(31)</u>	<u>Capital Reserve (1431)(32)</u>	<u>Other Capital Projects Fund(39)</u>	<u>Debt Service(40)</u>	<u>Permanent(90)</u>
<b>1000 Instruction</b>					
1100 Regular Programs - Elementary / Secondary					
1200 Special Programs - Elementary / Secondary					
1300 Vocational Education					
1400 Other Instructional Programs - Elementary / Secondary					
1500 Nonpublic School Programs					
1800 Pre-Kindergarten					
<b>Total Instruction</b>					
<b>2000 Support Services</b>					
2100 Support Services - Students					
2200 Support Services - Instructional Staff					
2300 Support Services - Administration			381,248.50		
2400 Support Services - Pupil Health					
2500 Support Services - Business					
2600 Operation and Maintenance of Plant Services		338,166.54			
2700 Student Transportation Services					
2800 Support Services - Central				722,078.00	
2900 Other Support Services					
<b>Total Support Services</b>		<b>\$338,166.54</b>	<b>\$1,103,326.50</b>		
<b>3000 Operation of Non-Instructional Services</b>					
3200 Student Activities					
3300 Community Services					
<b>Total Operation of Non-Instructional Services</b>					
<b>4000 Facilities Acquisition, Construction and Improvement Services</b>					
4400 Architecture and Engineering Services / Educational Specifications - Improvements			45,233.06		
4500 Building Acquisition and Construction Services - Original and Additional			54.50		
4600 Existing Building Improvement Services		265,360.27	22,069,940.42		
<b>Total Facilities Acquisition, Construction and Improvement Services</b>		<b>\$265,360.27</b>	<b>\$22,115,227.98</b>		
<b>5000 Other Expenditures and Financing Uses</b>					
5100 Debt Service / Other Expenditures and Financing Uses					
5200 Interfund Transfers - Out					
<b>Total Other Expenditures and Financing Uses</b>					
<b>TOTAL ACTUAL EXPENDITURES &amp; OTHER FINANCING USES</b>		<b>\$603,526.81</b>	<b>\$23,218,554.48</b>		

**Total**

<b>1000 <u>Instruction</u></b>	
1100 Regular Programs - Elementary / Secondary	23,862,561.23
1200 Special Programs - Elementary / Secondary	8,633,869.30
1300 Vocational Education	1,492,676.51
1400 Other Instructional Programs - Elementary / Secondary	203,779.51
1500 Nonpublic School Programs	30,140.04
1800 Pre-Kindergarten	90,563.09
<b>Total Instruction</b>	<b>\$34,313,589.68</b>
<b>2000 <u>Support Services</u></b>	
2100 Support Services - Students	1,766,627.18
2200 Support Services - Instructional Staff	1,642,802.94
2300 Support Services - Administration	3,226,218.62
2400 Support Services - Pupil Health	507,418.49
2500 Support Services - Business	899,430.35
2600 Operation and Maintenance of Plant Services	4,735,085.63
2700 Student Transportation Services	3,402,661.58
2800 Support Services - Central	2,633,343.62
2900 Other Support Services	42,054.22
<b>Total Support Services</b>	<b>\$18,855,642.63</b>
<b>3000 <u>Operation of Non-Instructional Services</u></b>	
3200 Student Activities	1,367,967.84
3300 Community Services	35,028.35
<b>Total Operation of Non-Instructional Services</b>	<b>\$1,402,996.19</b>
<b>4000 <u>Facilities Acquisition, Construction and Improvement Services</u></b>	
4400 Architecture and Engineering Services / Educational Specifications - Improvements	45,233.06
4500 Building Acquisition and Construction Services - Original and Additional	54.50
4600 Existing Building Improvement Services	22,335,300.69
<b>Total Facilities Acquisition, Construction and Improvement Services</b>	<b>\$22,380,588.25</b>
<b>5000 <u>Other Expenditures and Financing Uses</u></b>	
5100 Debt Service / Other Expenditures and Financing Uses	7,767,727.53
5200 Interfund Transfers - Out	209,914.43
<b>Total Other Expenditures and Financing Uses</b>	<b>\$7,977,641.96</b>
<b>TOTAL ACTUAL EXPENDITURES &amp; OTHER FINANCING USES</b>	<b>\$84,930,458.71</b>

**PSERS Salary Data (Salary Data should relate to the General Fund only)**

<b>Amount Description</b>	<b>Amount</b>
Total Salary Base for salaries subject to PSERS withholding	22,276,672.00
Total Federally Funded salaries subject to PSERS withholding	745,300.00
	<hr/>

**Title I Expenditure Data**

<b>Amount Description</b>	<b>Amount</b>
Expenditures Funded with Current Title I Funds	617,948.00
Expenditures Funded with Carry over Title I Funds	
<b>Total Title I Expenditure Data</b>	<hr/> <b>\$617,948.00</b> <hr/>

**Title IV Revenue Data**

<b>Amount Description</b>	<b>Amount</b>
Revenue from Title IV-A-1: Student Support and Academic Enrichment Grants	30,969.00
Revenue from Title IV-B: 21st Century Community Learning Centers	
	<hr/>

**Title V Revenue Data**

<b>Amount Description</b>	<b>Amount</b>
Revenue from Title V-B-2: Rural and Low-Income School Programs	
Revenue from Title V-B-1: Small Rural School Achievement (Directly from the Federal Govt)	
	<hr/>

1. <u>Current Special Education Expenditures within &lt;b&gt;Function 1000.&lt;/b&gt;\r\nSee list of exclusions in the note below.</u>	4,862,641.03
2. <u>Current Special Education Expenditures within &lt;b&gt;Function 2000.&lt;/b&gt;\r\nSee list of exclusions in the note below.</u>	3,207,500.97
3. <u>Current Special Education Expenditures within &lt;b&gt;Sub-Function 2100.&lt;/b&gt;\r\nThis data should also be included in line 2 above.\r\nSee list of exclusions in the note below.</u>	315,083.77
4. <u>Current Special Education Expenditures within &lt;b&gt;Sub-Function 2200.&lt;/b&gt;\r\nThis data should also be included in line 2 above.\r\nSee list of exclusions in the note below.</u>	374,988.91
5. <u>Current Special Education Expenditures within &lt;b&gt;Sub-Function 2700.&lt;/b&gt;\r\nThis data should also be included in line 2 above.\r\nSee list of exclusions in the note below.</u>	769,234.98
6. <u>Current Special Education Expenditures within &lt;b&gt;Sub-Function 3100.&lt;/b&gt;\r\nSee list of exclusions in the note below.</u>	
7. <u>Current Special Education Expenditures within &lt;b&gt;Sub-Function 3200.&lt;/b&gt;\r\nSee list of exclusions in the note below.</u>	224,719.58

Note: The Current Special Education Expenditure amounts for each line should be calculated as follows:

- \* Include the total expenditures for special education costs from all funds for the function/sub-function requested
- \* Exclude data from sub-functions: 1243,1450,1500,1600,1807,2280,2450,2750,2990
- \* Exclude data from objects: 322,511,512,516,561,562,564,566,592,593,594,595,596,597,700,830,899

**Benefits for Staff Relative to Collective Bargaining Agreements**

	OBJECT	COVERED	NOT COVERED	TOTAL
<b>10 General Fund</b>				
	211 Medical Insurance			
	212 Dental Insurance			
	215 Eye Care Insurance	8,789.78	8,199.21	16,988.99
	216 Prescription Insurance			
	271 Self-Insurance Medical Benefits	1,972,545.55	1,809,944.84	3,782,490.39
	272 Self-Insurance Dental Benefits	119,608.42	120,470.98	240,079.40
	275 Self-Insurance Eye Care Benefits			
	276 Self-Insurance Prescription Benefits			
	<b>FUND TOTAL</b>	<b>\$2,100,943.75</b>	<b>\$1,938,615.03</b>	<b>\$4,039,558.78</b>
<b>50 Enterprise Fund</b>				
	211 Medical Insurance			
	212 Dental Insurance			
	215 Eye Care Insurance		436.31	436.31
	216 Prescription Insurance			
	271 Self-Insurance Medical Benefits		118,367.30	118,367.30
	272 Self-Insurance Dental Benefits		9,703.11	9,703.11
	275 Self-Insurance Eye Care Benefits			
	276 Self-Insurance Prescription Benefits			
	<b>FUND TOTAL</b>		<b>\$128,506.72</b>	<b>\$128,506.72</b>
<b>60 Internal Service Fund</b>	<b>No Self Insurance data to report</b>			
	211 Medical Insurance			
	212 Dental Insurance			
	215 Eye Care Insurance			
	216 Prescription Insurance			
	271 Self-Insurance Medical Benefits			
	272 Self-Insurance Dental Benefits			
	275 Self-Insurance Eye Care Benefits			
	276 Self-Insurance Prescription Benefits			
		<b>FUND TOTAL</b>		
<b>Total of All Funds</b>		<b>\$2,100,943.75</b>	<b>\$2,067,121.75</b>	<b>\$4,168,065.50</b>

LEA : 113364403 Manheim Central SD

Printed 2/3/2023 11:30:58 AM

Function	Special Education (Prior Year)	Nonspecial Education (Prior Year)	Total (Prior Year)	Special Education (Current Year)	Nonspecial Education (Current Year)	Total (Current Year)
2120 Guidance Services	166,738.17	888,062.02	1,054,800.19	180,995.65	920,805.22	1,101,800.87
2140 Psychological Services	290,897.92	72,724.48	363,622.40	346,082.25	86,520.56	432,602.81
2150 Speech Pathology and Audiology Services						
2160 Social Work Services	14,973.46	79,749.92	94,723.38	16,270.65	82,776.00	99,046.65
2260 Instruction and Curriculum Development Services	424,612.62	106,153.16	530,765.78	496,637.86	124,159.47	620,797.33
2350 Legal and Accounting Services	1,413.00	56,367.50	57,780.50	420.00	95,222.40	95,642.40
2420 Medical Services						
2440 Nursing Services	80,437.66	428,418.00	508,855.66	83,335.22	423,963.27	507,298.49
2700 Student Transportation Services	530,998.09	2,417,064.56	2,948,062.65	769,234.80	2,633,426.00	3,402,660.80
<b>Total</b>	<b>\$1,510,070.92</b>	<b>\$4,048,539.64</b>	<b>\$5,558,610.56</b>	<b>\$1,892,976.43</b>	<b>\$4,366,872.92</b>	<b>\$6,259,849.35</b>

(PRINCIPAL AMOUNTS ONLY)

**GOVERNMENTAL FUNDS/ ACTIVITIES**

	Short-Term Borrowing	General Obligation Bonds/Notes	Authority Building Obligations	OLTD, Ext Term Fin, Leases	Other Post-Employment Benefits (OPEB)	Compensated Absences	Net Pension Liability	Total
1. Debt at Beginning of Fiscal Year		71,920,000.00		2,494,379.00	5,819,049.00	602,618.00	72,628,243.00	153,464,289.00
2. Additional Debt Incurred During Year		30,270,000.00		722,078.00	453,188.00			31,445,266.00
3. Retirements and Repayments		3,870,000.00		862,557.00		162,441.00	11,306,983.00	16,201,981.00
4. Debt at End of Fiscal Year		98,320,000.00		2,353,900.00	6,272,237.00	440,177.00	61,321,260.00	168,707,574.00
5. Accreted Interest at End Of Fiscal Year								
6. Total Debt and Accreted Interest		98,320,000.00		2,353,900.00	6,272,237.00	440,177.00	61,321,260.00	168,707,574.00
7. Current Portion P&I - Due within 1 year		4,195,000.00		805,904.00				5,000,904.00
8. Interest Paid during current fiscal year		3,067,800.93		72,911.00				3,140,711.93

(PRINCIPAL AMOUNTS ONLY)

**PROPRIETARY FUNDS**

	Short-Term Borrowing	General Obligation Bonds/Notes	Authority Building Obligations	OLTD, Ext Term Fin, Leases	Other Post-Employment Benefits (OPEB)	Compensated Absences	Net Pension Liability	Total
1. Debt at Beginning of Fiscal Year					75,694.00		1,722,671.00	1,798,365.00
2. Additional Debt Incurred During Year					8,543.00			8,543.00
3. Retirements and Repayments							268,191.00	268,191.00
4. Debt at End of Fiscal Year					84,237.00		1,454,480.00	1,538,717.00
5. Accreted Interest at End Of Fiscal Year								
6. Total Debt and Accreted Interest					84,237.00		1,454,480.00	1,538,717.00
7. Current Portion P&I - Due within 1 year								
8. Interest Paid during current fiscal year								

**Total Principal and Interest Payments Made by Your School - All Funds**

Function	Fund		Principal (910)	Principal (920)	Interest (830)	Total (Principal +Interest)	Misc Other Uses (990)
5110	10	General Fund	3,870,000.00		3,069,843.39	6,939,843.39	
5110	20	Special Revenue Funds					
5110	30	Capital Projects Funds					
5110	40	Debt Service Fund					
5110	90	Permanent Fund					
5120	10	General Fund					
5120	20	Special Revenue Funds					
5120	30	Capital Projects Funds					
5120	40	Debt Service Fund					
5140	10	General Fund	782,970.53		44,913.61	827,884.14	
5140	20	Special Revenue Funds					
5140	30	Capital Projects Funds					
5140	40	Debt Service Fund					
5140	90	Permanent Fund					
<b>Total Debt Payments - Governmental Funds</b>			<b>\$4,652,970.53</b>		<b>\$3,114,757.00</b>	<b>\$7,767,727.53</b>	

Function	Fund		Principal (910)	Principal (920)	Interest (830)	Total (Principal +Interest)
5110	50	Enterprise Fund				
5110	60	Internal Service Fund				
5120	50	Enterprise Fund				
5120	60	Internal Service Fund				
5140	50	Enterprise Fund				
5140	60	Internal Service Fund				
<b>Total Debt Payments - Proprietary Funds</b>						

**Debt Details**  
**Governmental Funds/ Activities**

Debt Category	Debt Issue Date (MM/YYYY)	Principal Amounts Only				Current Portion Due Within One Year (Principal and Interest)	Interest Paid During Fiscal Year
		Debt at Beginning of Fiscal Year	Additions	Reductions / Repayments	Debt at End of Fiscal Year		
General Obligation Bonds/Notes – CIB	01/2021	10,095,000.00		5,000.00	10,090,000.00	5,000.00	359,025.00
General Obligation Bonds/Notes – CIB	03/2021	9,915,000.00		45,000.00	9,870,000.00	65,000.00	136,997.76
General Obligation Bonds/Notes – CIB	09/2021		30,270,000.00		30,270,000.00	125,000.00	747,019.17
General Obligation Bonds/Notes – CIB	12/2020	9,995,000.00		75,000.00	9,920,000.00	75,000.00	178,681.50
General Obligation Bonds/Notes – CIB	11/2019	8,875,000.00		5,000.00	8,870,000.00	5,000.00	252,387.50
General Obligation Bonds/Notes – CIB	05/2018	9,485,000.00		5,000.00	9,480,000.00	5,000.00	344,335.00
General Obligation Bonds/Notes – CIB	09/2016	11,840,000.00		5,000.00	11,835,000.00	5,000.00	497,355.00
General Obligation Bonds/Notes – CIB	09/2016	11,715,000.00		3,730,000.00	7,985,000.00	3,910,000.00	552,000.00
Other Long Term Debt/Liabilities		1,246,321.00		79,587.00	1,166,734.00	78,037.00	27,997.00
Compensated Absences		602,618.00		162,441.00	440,177.00		
Other Post-Employment Benefits (OPEB)		5,819,049.00	453,188.00		6,272,237.00		
Net Pension Liability		72,628,243.00		11,306,983.00	61,321,260.00		
Leases		1,248,058.00	722,078.00	782,970.00	1,187,166.00	727,867.00	44,914.00
<b>Totals for Debt Entered:</b>		<b>\$153,464,289.00</b>	<b>\$31,445,266.00</b>	<b>\$16,201,981.00</b>	<b>\$168,707,574.00</b>	<b>\$5,000,904.00</b>	<b>\$3,140,711.93</b>

**Bond Details**  
**Proprietary Funds**

Debt Category	Debt Issue Date (MM/YYYY)	Principal Amounts Only				Current Portion Due Within One Year (Principal and Interest)	Interest Paid During Fiscal Year
		Debt at Beginning of Fiscal Year	Additions	Reductions / Repayments	Debt at End of Fiscal Year		
Other Post-Employment Benefits (OPEB)		75,694.00	8,543.00		84,237.00		
Net Pension Liability		1,722,671.00		268,191.00	1,454,480.00		
<b>Totals for Debt Entered:</b>		<b>\$1,798,365.00</b>	<b>\$8,543.00</b>	<b>\$268,191.00</b>	<b>\$1,538,717.00</b>		

**General Fund (10)**

**Section 1: Tuition/Purchased Services as Reported within Expenditure Detail**

	Amount
Tuition Reported in General Fund Expenditures 1000-560	3,679,217.43
Purchased Services in General Fund Expenditures 1000-594 and 1000-597	171,285.74
<b>Section 1 Total</b>	<b>\$3,850,503.17</b>

**Section 2: Tuition Paid to Institution Types During Fiscal Year**

	Tuition Paid For Nonspecial Education	Tuition Paid For Special Education	Total
1 1306 Institutions			
2 Institutionalized Children's Programs			
3 Juveniles Incarcerated in Adult Facilities			
4 Residential Treatment Facilities			
5 Other Local Education Agencies	49,923.37	69,622.63	119,546.00
6 Brick and Mortar Charter Schools			
7 Cyber Charter Schools	1,558,121.90	778,233.57	2,336,355.47
8 Career and Technology Centers	1,049,896.34		1,049,896.34
9 Approved Private Schools		26,979.71	26,979.71
10 PA Chartered Schools for the Deaf and Blind			
11 Private Residential Rehabilitative Institutions	990.00	316,735.65	317,725.65
12 Juvenile Detention Centers			
13 Special Program Jointures			
14 Other Tuition Not Included Elsewhere In This Section			
<b>Section 2 Total</b>	<b>\$2,658,931.61</b>	<b>\$1,191,571.56</b>	<b>\$3,850,503.17</b>

1 .	<u>Student Transportation Services for Educational Field Trips</u>	2,555.00
2 .	<u>Student Transportation Services for Student Activities</u>	1,720.00
3 .	<u>Rental of Vehicles for Student Transportation Services</u>	
4 .	<u>Capital Reserve Funds</u>	

Include only district-owned transportation expenditures paid from State or local money.  
 DO NOT include federal expenditures or payments to contract service providers.  
 Contracted transportation services should not be recorded on this schedule.

**Food Service / Cafeteria Operations Fund (51)**

**3000 Operation of Non-Instructional Services**

**Total**

**100 Personnel Services – Salaries**

100 Personnel Services – Salaries 639,271.13

**Total Personnel Services – Salaries \$639,271.13**

**200 Personnel Services – Employee Benefits**

210 Group Insurance – Contracted Provider 1,111.07

220 Social Security Contributions 46,914.31

230 PSERS Retirement Contributions 126,970.15

260 Workers’ Compensation 4,156.87

270 Group Insurance – Self-Insurance 128,070.41

299 All Other Employee Benefits 1,500.00

**Total Personnel Services – Employee Benefits \$308,722.81**

**400 Purchased Property Services**

430 Repairs and Maintenance Services 39,841.86

**Total Purchased Property Services \$39,841.86**

**500 Other Purchased Services**

530 Communications 1,638.00

580 Travel 496.61

**Total Other Purchased Services \$2,134.61**

**600 Supplies**

610 General Supplies 79,270.86

630 Food 816,511.08

650 Supplies & Fees – Technology Related 4,750.00

**Total Supplies \$900,531.94**

**700 Property**

740 Depreciation 16,035.90

**Total Property \$16,035.90**

**800 Other Objects**

810 Dues and Fees 1,043.50

**Total Other Objects \$1,043.50**

**Total 3000 Operation of Non-Instructional Services \$1,907,581.75**

**Food Service / Cafeteria Operations Fund (51)**

	<u>Elementary</u>	<u>Secondary</u>	<u>Federal</u>	<u>Total</u>
<b>3100 Food Services</b>				
<b>100 Personnel Services – Salaries</b>				
100 Personnel Services – Salaries				639,271.13
<b>Total Personnel Services – Salaries</b>				<b>\$639,271.13</b>
<b>200 Personnel Services – Employee Benefits</b>				
210 Group Insurance – Contracted Provider				1,111.07
220 Social Security Contributions				46,914.31
230 PSERS Retirement Contributions				126,970.15
260 Workers' Compensation				4,156.87
270 Group Insurance – Self-Insurance				128,070.41
299 All Other Employee Benefits				1,500.00
<b>Total Personnel Services – Employee Benefits</b>				<b>\$308,722.81</b>
<b>400 Purchased Property Services</b>				
430 Repairs and Maintenance Services				39,841.86
<b>Total Purchased Property Services</b>				<b>\$39,841.86</b>
<b>500 Other Purchased Services</b>				
530 Communications				1,638.00
580 Travel				496.61
<b>Total Other Purchased Services</b>				<b>\$2,134.61</b>
<b>600 Supplies</b>				
610 General Supplies				79,270.86
630 Food				816,511.08
650 Supplies & Fees – Technology Related				4,750.00
<b>Total Supplies</b>				<b>\$900,531.94</b>
<b>700 Property</b>				
740 Depreciation				16,035.90
<b>Total Property</b>				<b>\$16,035.90</b>
<b>800 Other Objects</b>				
810 Dues and Fees				1,043.50
<b>Total Other Objects</b>				<b>\$1,043.50</b>
<b>Total 3100 Food Services</b>				<b>\$1,907,581.75</b>

**Internal Service Fund (60)**

<b>1000 Instruction</b>	<u><b>Total</b></u>
<b>200 Personnel Services – Employee Benefits</b>	
270 Group Insurance – Self-Insurance	5,463,634.99
<b>Total Personnel Services – Employee Benefits</b>	<b>\$5,463,634.99</b>
<b>Total 1000 Instruction</b>	<b>\$5,463,634.99</b>

Internal Service Fund (60)

1100 Regular Programs – Elementary / Secondary

Elementary

Secondary

Federal

Total

200 Personnel Services – Employee Benefits

270 Group Insurance – Self-Insurance

5,463,634.99

**Total Personnel Services – Employee Benefits**

**\$5,463,634.99**

**Total 1100 Regular Programs – Elementary / Secondary**

**\$5,463,634.99**

LEA : 113364403 Manheim Central SD

Printed 2/3/2023 11:31:07 AM

Internal Service Fund (60)

1110 Regular Programs

Elementary

Secondary

Federal

Total

200 Personnel Services – Employee Benefits

270 Group Insurance – Self-Insurance

5,463,634.99

**Total Personnel Services – Employee Benefits**

**\$5,463,634.99**

**Total 1110 Regular Programs**

**\$5,463,634.99**

	<u>Food Service(51)</u>	<u>Child Care Operations(52)</u>	<u>Other Enterprise(58)</u>	<u>Internal Service(60)</u>	<u>Total</u>
<b>1000 Instruction</b>					
1100 Regular Programs - Elementary / Secondary				5,463,634.99	5,463,634.99
<b>Total Instruction</b>				<b>\$5,463,634.99</b>	<b>\$5,463,634.99</b>
<b>3000 Operation of Non-Instructional Services</b>					
3100 Food Services	1,907,581.75				1,907,581.75
<b>Total Operation of Non-Instructional Services</b>	<b>\$1,907,581.75</b>				<b>\$1,907,581.75</b>
<b>TOTAL ACTUAL EXPENDITURES &amp; OTHER FINANCING USES</b>	<b>\$1,907,581.75</b>			<b>\$5,463,634.99</b>	<b>\$7,371,216.74</b>

LEA : 113364403 Manheim Central SD

Printed 2/3/2023 11:31:17 AM

Fund	School	School Number	Local Personnel	Local Nonpersonnel	State Personnel	State Nonpersonnel	Federal Personnel	Federal Nonpersonnel	Total	Explanation
10	Baron EL Sch	8461	3,168,159.23	1,114,612.01	1,214,962.29	427,444.29	357,124.36	57,485.35	6,339,787.53	
	Doe Run El Sch	8422	6,212,365.17	1,990,853.61	2,382,389.55	763,475.54	337,922.47	114,395.58	11,801,401.92	
	Manheim Central MS	7953	7,876,874.67	3,357,326.75	3,020,714.87	1,287,506.44	547,206.53	159,793.51	16,249,422.77	
	Manheim Central SHS	2618	8,838,878.06	2,968,596.20	3,389,635.03	1,138,431.55	133,332.52	148,082.02	16,616,955.38	
<b>Total</b>			<b>26,096,277.13</b>	<b>9,431,388.57</b>	<b>10,007,701.74</b>	<b>3,616,857.82</b>	<b>1,375,585.88</b>	<b>479,756.46</b>	<b>51,007,567.60</b>	