

LEA Name : Northwestern Lehigh SD
Address : 6493 Route 309
New Tripoli , PA 18066

County : Lehigh
AUN Number : 121394603
LEA Type : SD

Annual Financial Report
Accuracy Certification Statement

For Fiscal Year Ending
6/30/2022

Pennsylvania Department of Education
&
Office of Comptroller Operations

PDE-2056: Intermediate Unit
PDE-2057: School District, AVTS/CTC, Charter School,
and Special Program Jointure

CERTIFICATION: By signing this page I agree that the electronic data submitted is a complete and accurate statement of the financial operations and status of the local education agency for the fiscal year. It has been prepared in accordance with generally accepted accounting principles and established Commonwealth of PA reporting guidelines.



Chief School Administrator Signature

11.18.22

Date



Board Secretary Signature

11.18.22

Date

Christie Steigerwalt

Contact Person

(610)298-8661 Ext :1230

Contact Person Telephone Number

steigerwaltc2@nwlehighsd.org

Contact Person E-mail Address

(610)298-8002

Contact Person Fax Number

Audit Certification
Annual Financial Report:
For Fiscal Year Ending **6/30/2022**
(Pursuant to PA School Code Section 218(b))

LEA Name : Northwestern Lehigh SD
AUN Number : 121394603
County : Lehigh

Audit Certification Due: 12/31/2022

This certification is applicable to the Annual Financial Report data submitted through the Consolidated Financial Reporting System (CFRS).

CERTIFICATION: By signing this page I agree that the financial statements of the school have been properly audited as noted above pursuant to Article XXIV, and in the auditor's professional opinion, the Annual Financial Report (PDE-2057) submitted through CFRS is materially consistent with the audited financial statements.

Chief School Administrator


Signature _____ Date 11.18.22

Board Secretary


Signature _____ Date 11.18.22

Christie Steigerwalt

Contact Person

steigerwaltc2@nwlehighsd.org

Contact Person E-mail Address

(610)298-8661

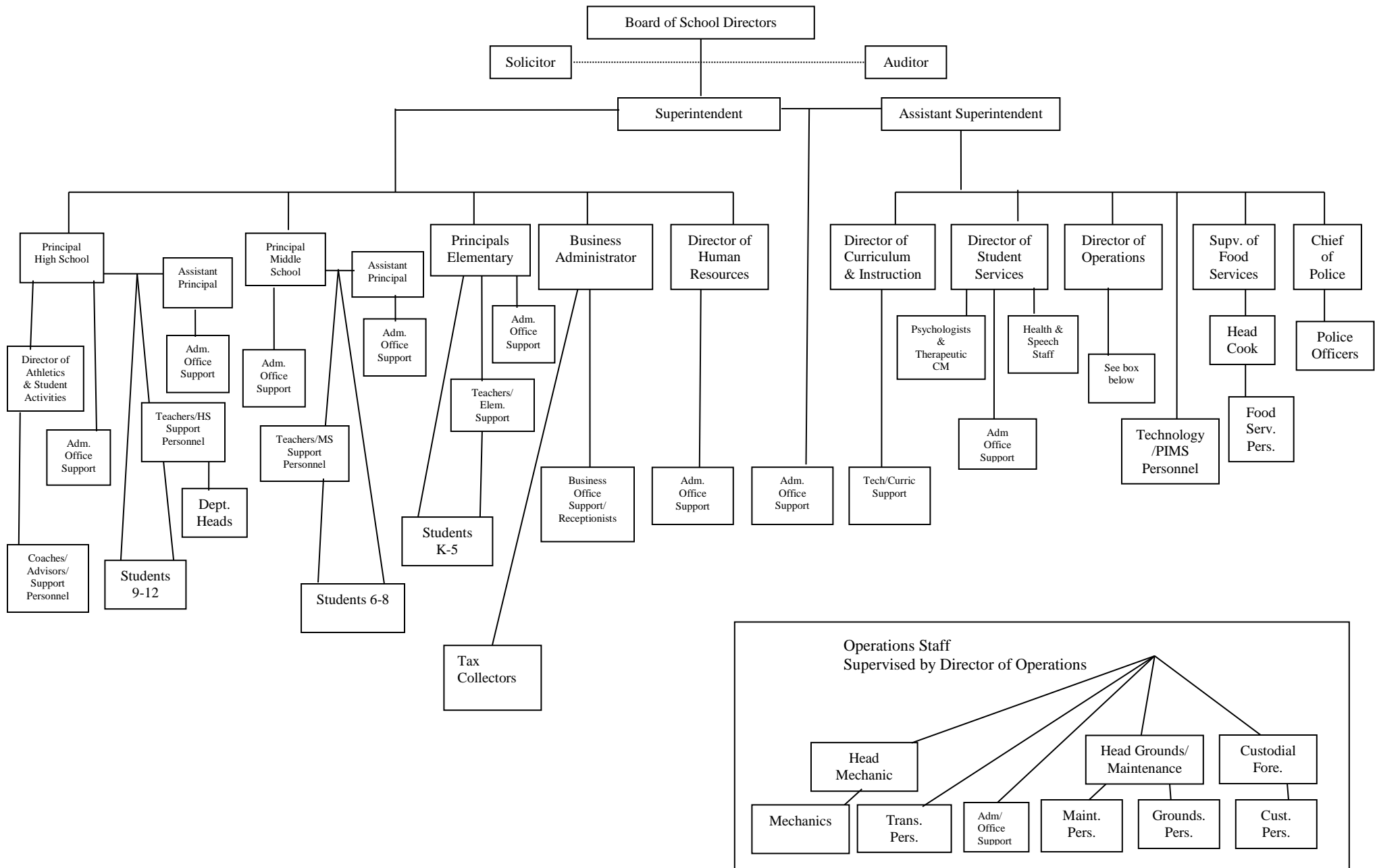
Ext :1230

Contact Person Telephone Number

(610)298-8002

Contact Person Fax Number

008. ORGANIZATIONAL CHART - Pg. 1



<u>Val Number</u>	<u>Description</u>	<u>Justification</u>
30501	Revenue Detail: AFR amount must equal PDE FAI system amount. 7311, AFR Rev Detail: \$969,667.93 7311, PDE FAI System: \$399,627.60	We submitted a 1501.8 certification that was approved and monies received September 2022.
41005	Expenditures have been reported in Function 1700 – Higher Education Programs for Secondary Students. Please confirm that these costs were for services provided to your school’s secondary students. NOTE: Adult education programs and Community College sponsorship should be coded to Function 1600. Exp detail, Fund 10, Function 1700 total \$90.00	This was reimbursement for a dual enrollment program.
42420	Expenditure Detail: Total current year 2700-513 expenditure varies from prior year by 10%. Correct the data or enter a justification. 2700-513, AFR Exp Detail: \$83,355.70 2700-513, PY AFR Amount: \$45,203.52	The district was back to normal transportation schedules increasing our costs from the prior year.
50430	SESS - 2160 Social Work Services: SESS Schedule amounts for Special Education vary from prior year by 40% or more. Correct the data or enter a justification. SESS Schedule 2160: \$20,958.73 Prior Year SESS Schedule 2160: \$0.00	We hired a social worker using ESSER funds. This was a new position for the 2021-2022 school year.

Amounts Expressed in Whole Dollars		<u>General Fund</u> <u>(10)</u>	<u>Student Sponsored</u> <u>Activity Fund</u> <u>(21)</u>	<u>Public Purpose Trust</u> <u>(27)</u>	<u>Other Compt Approved</u> <u>(28)</u>	<u>Athletic / Activity</u> <u>(29)</u>
Assets And Deferred Outflows Of Resources						
Assets						
0100	Cash and Cash Equivalents	15,264,351	66,535			
0110	Investments	5,000,000				
0120	Taxes Receivable	811,271				
0130	Due From Other Funds	974,780	402			
0141	Due From Other Governments	3,171,694				
0142	State Revenue Receivable					
0143	Federal Revenue Receivable					
0145	Other Intergovernmental Revenue Receivable					
0146	Due from Primary Government					
0147	Due from Component Unit					
0150	Other Receivables	6,959				
0170	Inventories					
0180	Prepaid Expenses (Expenditures)	507,795				
0190	Other Current Assets					
Total Assets		\$25,736,850	\$66,937			
0910	Deferred Outflows of Resources					
Total Assets And Deferred Outflows Of Resources		\$25,736,850	\$66,937			

Amounts Expressed in Whole Dollars		<u>Capital Reserve (690.</u> <u>1850)</u> <u>(31)</u>	<u>Capital Reserve (1431)</u> <u>(32)</u>	<u>Other Capital Projects</u> <u>Fund</u> <u>(39)</u>	<u>Debt Service</u> <u>(40)</u>	<u>Permanent</u> <u>(90)</u>
Assets And Deferred Outflows Of Resources						
Assets						
0100	Cash and Cash Equivalents		3,579,044	109,881		
0110	Investments					
0120	Taxes Receivable					
0130	Due From Other Funds					
0141	Due From Other Governments					
0142	State Revenue Receivable					
0143	Federal Revenue Receivable					
0145	Other Intergovernmental Revenue Receivable					
0146	Due from Primary Government					
0147	Due from Component Unit					
0150	Other Receivables					
0170	Inventories					
0180	Prepaid Expenses (Expenditures)					
0190	Other Current Assets					
Total Assets			\$3,579,044	\$109,881		
0910	Deferred Outflows of Resources					
Total Assets And Deferred Outflows Of Resources			\$3,579,044	\$109,881		

Amounts Expressed in Whole Dollars		<u>Total Governmental</u>
		<u>Funds</u>
Assets And Deferred Outflows Of Resources		
Assets		
0100	Cash and Cash Equivalents	19,019,811
0110	Investments	5,000,000
0120	Taxes Receivable	811,271
0130	Due From Other Funds	975,182
0141	Due From Other Governments	3,171,694
0142	State Revenue Receivable	
0143	Federal Revenue Receivable	
0145	Other Intergovernmental Revenue Receivable	
0146	Due from Primary Government	
0147	Due from Component Unit	
0150	Other Receivables	6,959
0170	Inventories	
0180	Prepaid Expenses (Expenditures)	507,795
0190	Other Current Assets	
Total Assets		\$29,492,712
0910	Deferred Outflows of Resources	
Total Assets And Deferred Outflows Of Resources		\$29,492,712

Amounts Expressed in Whole Dollars	<u>General Fund</u> <u>(10)</u>	<u>Student Sponsored</u> <u>Activity Fund</u> <u>(21)</u>	<u>Public Purpose Trust</u> <u>(27)</u>	<u>Other Compt Approved</u> <u>(28)</u>	<u>Athletic / Activity</u> <u>(29)</u>
Liabilities And Deferred Inflows Of Resources And Fund Balances					
Liabilities					
0400 Due to Other Funds	1,043,345	529			
0411 Due to Other Governments	385,900				
0412 Due to Primary Government					
0413 Due to Component Unit					
0420 Accounts Payable	819,920				
0430 Contracts Payable					
0440 Current Portion of Long-Term Debt	72,407				
0450 Short-Term Payables					
0461 Accrued Salaries and Benefits	2,602,421				
0462 Payroll Deductions and Withholding	2,201,907				
0480 Unearned Revenues					
0490 Other Current Liabilities	17,889				
Total Liabilities	\$7,143,789	\$529			
0950 Deferred Inflows of Resources	702,735				
Fund Balances					
0810 Nonspendable Fund Balance	507,795				
0820 Restricted Fund Balance	322,756				
0830 Committed Fund Balance	9,037,190				
0840 Assigned Fund Balance	6,506,701	66,408			
0850 Unassigned Fund Balance	1,515,884				
Total Fund Balances	\$17,890,326	\$66,408			
Total Liabilities, Deferred Inflows Of Resources And Fund Balances	\$25,736,850	\$66,937			

LEA : 121394603 Northwestern Lehigh SD

Printed 11/18/2022 2:53:44 PM

Amounts Expressed in Whole Dollars		<u>Capital Reserve (690.</u> <u>1850)</u> <u>(31)</u>	<u>Capital Reserve (1431)</u> <u>(32)</u>	<u>Other Capital Projects</u> <u>Fund</u> <u>(39)</u>	<u>Debt Service</u> <u>(40)</u>	<u>Permanent</u> <u>(90)</u>
Liabilities And Deferred Inflows Of Resources And Fund Balances						
Liabilities						
0400	Due to Other Funds					
0411	Due to Other Governments					
0412	Due to Primary Government					
0413	Due to Component Unit					
0420	Accounts Payable					
0430	Contracts Payable					
0440	Current Portion of Long-Term Debt					
0450	Short-Term Payables					
0461	Accrued Salaries and Benefits					
0462	Payroll Deductions and Withholding					
0480	Unearned Revenues					
0490	Other Current Liabilities					
Total Liabilities						
0950	Deferred Inflows of Resources					
Fund Balances						
0810	Nonspendable Fund Balance					
0820	Restricted Fund Balance		3,579,044	109,881		
0830	Committed Fund Balance					
0840	Assigned Fund Balance					
0850	Unassigned Fund Balance					
Total Fund Balances			\$3,579,044	\$109,881		
Total Liabilities, Deferred Inflows Of Resources And Fund Balances			\$3,579,044	\$109,881		

LEA : 121394603 Northwestern Lehigh SD

Printed 11/18/2022 2:53:44 PM

Amounts Expressed in Whole Dollars		<u>Total Governmental Funds</u>
Liabilities And Deferred Inflows Of Resources And Fund Balances		
Liabilities		
0400 Due to Other Funds	1,043,874	
0411 Due to Other Governments	385,900	
0412 Due to Primary Government		
0413 Due to Component Unit		
0420 Accounts Payable	819,920	
0430 Contracts Payable		
0440 Current Portion of Long-Term Debt	72,407	
0450 Short-Term Payables		
0461 Accrued Salaries and Benefits	2,602,421	
0462 Payroll Deductions and Withholding	2,201,907	
0480 Unearned Revenues		
0490 Other Current Liabilities	17,889	
Total Liabilities	\$7,144,318	
0950 Deferred Inflows of Resources	702,735	
Fund Balances		
0810 Nonspendable Fund Balance	507,795	
0820 Restricted Fund Balance	4,011,681	
0830 Committed Fund Balance	9,037,190	
0840 Assigned Fund Balance	6,573,109	
0850 Unassigned Fund Balance	1,515,884	
Total Fund Balances	\$21,645,659	
Total Liabilities, Deferred Inflows Of Resources And Fund Balances	\$29,492,712	

Amounts Expressed in Whole Dollars		<u>General Fund</u> <u>(10)</u>	<u>Student Sponsored</u> <u>Activity Fund</u> <u>(21)</u>	<u>Public Purpose Trust</u> <u>(27)</u>	<u>Other Compt Approved</u> <u>(28)</u>	<u>Athletic / Activity</u> <u>(29)</u>
Revenues						
6000	Revenue from Local Sources	32,353,766	59,961			
7000	Revenue from State Sources	13,867,563				
8000	Revenue from Federal Sources	1,358,150				
Total Revenues		\$47,579,479	\$59,961			
Expenditures						
1000	Instruction	26,062,738				
2000	Support Services	14,432,867				
3000	Operation of Non-Instructional Services	1,068,760	62,240			
4000	Facilities Acquisition, Construction and Improvement Services					
5110	Debt Service	3,891,483				
5130	Refund of Prior Year Revenues / Receipts	2,055				
5140	Leases					
Total Expenditures		\$45,457,903	\$62,240			
Excess (Deficiency) Of Revenues Over Expenditures		\$2,121,576	(\$2,279)			
Other Financing Sources (Uses)						
9110	Face Value of Bonds Issued					
9120	Proceeds from Refunding of Bonds					
9130	Bond Premiums					
9200	Proceeds from Extended-Term Financing and Leases					
9300	Interfund Transfers - IN					
9400	Sale of or Compensation for Loss of Fixed Assets					
9710	Transfers from Component Units					
9720	Transfers from Primary Governments					
9910	Other Financing Sources Not Listed in the 9000 Series					
9990	Insurance Recoveries					
5120	Debt Service – Refunded Bonds					
5150	Bond Discounts					
5200	Interfund Transfers – Out	683,704				
5300	Transfers Out to Component Units/Primary Governments					
Total Other Financing Sources (Uses)		(\$683,704)				

Amounts Expressed in Whole Dollars		<u>Capital Reserve (690.1850)</u> <u>(31)</u>	<u>Capital Reserve (1431)</u> <u>(32)</u>	<u>Other Capital Projects</u> <u>Fund</u> <u>(39)</u>	<u>Debt Service</u> <u>(40)</u>	<u>Permanent</u> <u>(90)</u>
Revenues						
6000	Revenue from Local Sources		12,514	284		
7000	Revenue from State Sources					
8000	Revenue from Federal Sources					
Total Revenues			\$12,514	\$284		
Expenditures						
1000	Instruction					
2000	Support Services				50,906	
3000	Operation of Non-Instructional Services					
4000	Facilities Acquisition, Construction and Improvement Services		170,017			
5110	Debt Service					
5130	Refund of Prior Year Revenues / Receipts					
5140	Leases					
Total Expenditures			\$170,017		\$50,906	
Excess (Deficiency) Of Revenues Over Expenditures			(\$157,503)	\$284	(\$50,906)	
Other Financing Sources (Uses)						
9110	Face Value of Bonds Issued					
9120	Proceeds from Refunding of Bonds				5,780,000	
9130	Bond Premiums					
9200	Proceeds from Extended-Term Financing and Leases					
9300	Interfund Transfers - IN		612,868		48,931	
9400	Sale of or Compensation for Loss of Fixed Assets					
9710	Transfers from Component Units					
9720	Transfers from Primary Governments					
9910	Other Financing Sources Not Listed in the 9000 Series					
9990	Insurance Recoveries					
5120	Debt Service – Refunded Bonds				5,778,025	
5150	Bond Discounts					
5200	Interfund Transfers – Out					
5300	Transfers Out to Component Units/Primary Governments					
Total Other Financing Sources (Uses)			\$612,868		\$50,906	

Amounts Expressed in Whole Dollars		<u>Total Governmental Funds</u>
Revenues		
6000	Revenue from Local Sources	32,426,525
7000	Revenue from State Sources	13,867,563
8000	Revenue from Federal Sources	1,358,150
Total Revenues		\$47,652,238
Expenditures		
1000	Instruction	26,062,738
2000	Support Services	14,483,773
3000	Operation of Non-Instructional Services	1,131,000
4000	Facilities Acquisition, Construction and Improvement Services	170,017
5110	Debt Service	3,891,483
5130	Refund of Prior Year Revenues / Receipts	2,055
5140	Leases	
Total Expenditures		\$45,741,066
Excess (Deficiency) Of Revenues Over Expenditures		\$1,911,172
Other Financing Sources (Uses)		
9110	Face Value of Bonds Issued	
9120	Proceeds from Refunding of Bonds	5,780,000
9130	Bond Premiums	
9200	Proceeds from Extended-Term Financing and Leases	
9300	Interfund Transfers - IN	661,799
9400	Sale of or Compensation for Loss of Fixed Assets	
9710	Transfers from Component Units	
9720	Transfers from Primary Governments	
9910	Other Financing Sources Not Listed in the 9000 Series	
9990	Insurance Recoveries	
5120	Debt Service – Refunded Bonds	5,778,025
5150	Bond Discounts	
5200	Interfund Transfers – Out	683,704
5300	Transfers Out to Component Units/Primary Governments	
Total Other Financing Sources (Uses)		(\$19,930)

Amounts Expressed in Whole Dollars		<u>General Fund</u> <u>(10)</u>	<u>Student Sponsored</u> <u>Activity Fund</u> <u>(21)</u>	<u>Public Purpose Trust</u> <u>(27)</u>	<u>Other Compt Approved</u> <u>(28)</u>	<u>Athletic / Activity</u> <u>(29)</u>
Special And Extraordinary Items						
9920 Special Items – Gains						
9930 Extraordinary Items – Gains						
5520 Special Items – Losses						
5530 Extraordinary Items – Losses						
Net Change In Fund Balances		\$1,437,872	(\$2,279)			
Fund Balance						
0001 Fund Balance - Beginning of Fiscal Year		16,452,454	68,687			
Fund Balance - End Of Year		\$17,890,326	\$66,408			

Amounts Expressed in Whole Dollars		<u>Capital Reserve (690.</u> <u>1850)</u> <u>(31)</u>	<u>Capital Reserve (1431)</u> <u>(32)</u>	<u>Other Capital Projects</u> <u>Fund</u> <u>(39)</u>	<u>Debt Service</u> <u>(40)</u>	<u>Permanent</u> <u>(90)</u>
Special And Extraordinary Items						
9920	Special Items – Gains					
9930	Extraordinary Items – Gains					
5520	Special Items – Losses					
5530	Extraordinary Items – Losses					
Net Change In Fund Balances			\$455,365	\$284		
Fund Balance						
0001	Fund Balance - Beginning of Fiscal Year		3,123,678	109,597		
Fund Balance - End Of Year			\$3,579,043	\$109,881		

Amounts Expressed in Whole Dollars		<u>Total Governmental Funds</u>
Special And Extraordinary Items		
9920	Special Items – Gains	
9930	Extraordinary Items – Gains	
5520	Special Items – Losses	
5530	Extraordinary Items – Losses	
Net Change In Fund Balances		\$1,891,242
Fund Balance		
0001	Fund Balance - Beginning of Fiscal Year	19,754,416
Fund Balance - End Of Year		\$21,645,658

Amounts Expressed in Whole Dollars		<u>Food Service</u> <u>(51)</u>	<u>Child Care</u> <u>Operations</u> <u>(52)</u>	<u>Other Enterprise</u> <u>(58)</u>	<u>TOTAL</u>	<u>Internal Service</u> <u>(60)</u>
Assets And Deferred Outflows Of Resources						
Current Assets						
0100	Cash and Cash Equivalents	41		52,399	52,440	
0110	Investments					
0130	Due From Other Funds	1,841,869			1,841,869	
0141	Due From Other Governments	147,672		3,612	151,284	
0142	State Revenue Receivable					
0143	Federal Revenue Receivable					
0146	Due from Primary Government					
0147	Due from Component Unit					
0150	Other Receivables	9,989			9,989	
0170	Inventories	27,353		655	28,008	
0180	Prepaid Expenses (Expenditures)	1,533			1,533	
0190	Other Current Assets					
Total Current Assets		\$2,028,457		\$56,666	\$2,085,123	
Noncurrent Assets						
0211	Land					
0212	Site Improvements (Net)					
0220	Buildings and Building Improvements (Net)	22,391			22,391	
0230	Machinery, Equipment and Furniture (Net)	57,411		76,918	134,329	
0250	Construction in Progress					
0260	Long Term Prepayments					
0290	Other Noncurrent Assets					
Total Noncurrent Assets		\$79,802		\$76,918	\$156,720	
0910	Deferred Outflows of Resources	131,281			131,281	
Total Assets And Deferred Outflows Of Resources		\$2,239,540		\$133,584	\$2,373,124	

Amounts Expressed in Whole Dollars	<u>Food Service</u> <u>(51)</u>	<u>Child Care</u> <u>Operations</u> <u>(52)</u>	<u>Other Enterprise</u> <u>(58)</u>	<u>TOTAL</u>	<u>Internal Service</u> <u>(60)</u>
Liabilities And Deferred Inflows Of Resources And Net Position					
Current Liabilities					
0400 Due to Other Funds	1,752,444		22,776	1,775,220	
0411 Due to Other Governments					
0413 Due to Component Unit					
0420 Accounts Payable	76,593			76,593	
0430 Contracts Payable					
0440 Current Portion of Long-Term Debt					
0450 Short-Term Payables					
0461 Accrued Salaries and Benefits	3,712			3,712	
0462 Payroll Deductions and Withholding					
0480 Unearned Revenues					
0490 Other Current Liabilities			8,929	8,929	
Total Current Liabilities	\$1,832,749		\$31,705	\$1,864,454	
Noncurrent Liabilities					
0510 Bonds Payable					
0520 Extended-Term Financing Agreements Payable					
0530 Lease Obligations					
0540 Accumulated Compensated Absences					
0550 Authority Lease Obligations					
0560 Other Post-Employment Benefits (OPEB)	47,979			47,979	
0570 Net Pension Liability	947,171			947,171	
0599 Other Noncurrent Liabilities	30,028			30,028	
Total Noncurrent Liabilities	\$1,025,178			\$1,025,178	
Total Liabilities	\$2,857,927		\$31,705	\$2,889,632	
0950 Deferred Inflows of Resources	132,790			132,790	
Net Position					
0791 Net Investment in Capital Assets	79,802		76,918	156,720	
0008 Restricted Net Position (0792 – 0798)					
0799 Unrestricted Net Position	(830,979)		24,961	(806,018)	
Total Net Position	(\$751,177)		\$101,879	(\$649,298)	
Total Liabilities And Deferred Inflows Of Resources And Net Position	\$2,239,540		\$133,584	\$2,373,124	

Amounts Expressed in Whole Dollars		<u>Food Service</u> <u>(51)</u>	<u>Child Care Operations</u> <u>(52)</u>	<u>Other Enterprise</u> <u>(58)</u>	<u>TOTAL</u>	<u>Internal Service</u> <u>(60)</u>
Operating Revenues						
6600	Food Service Revenue	135,857			135,857	
0071	Charges for Services			22,327	22,327	
0072	Other Operating Revenue	4,787		6,018	10,805	
Total Operating Revenues		\$140,644		\$28,345	\$168,989	
Operating Expenses						
100	Personnel Services – Salaries	293,606		3,823	297,429	
200	Personnel Services – Employee Benefits	70,357		1,472	71,829	
300	Purchased Professional and Technical Services					
400	Purchased Property Services	31,007		2,947	33,954	
500	Other Purchased Services					
600	Supplies	499,528		17,296	516,824	
740	Depreciation	14,867		7,261	22,128	
810	Dues and Fees					
880	Refunds of Prior Years' Receipts					
890	Miscellaneous Expenditures	600		1,002	1,602	
Total Operating Expenses		\$909,965		\$33,801	\$943,766	
Operating Income (Loss)		(\$769,321)		(\$5,456)	(\$774,777)	
Non Operating Revenues (Expenses)						
6500	Earnings on Investments			82	82	
6920	Contributions and Donations from Private Sources					
6930	Gains or Losses on Sale of Fixed Assets					
6991	Refunds of a Prior Year Expenditure					
7000	Revenue from State Sources	83,652		736	84,388	
8000	Revenue from Federal Sources	1,111,768			1,111,768	
9990	Insurance Recoveries					
820	Claims and Judgments Against the LEA					
830	Interest					
TOTAL Non Operating Revenues (Expenses)		\$1,195,420		\$818	\$1,196,238	
Income (Loss) Before Contributions And Transfers		\$426,099		(\$4,638)	\$421,461	

Amounts Expressed in Whole Dollars	<u>Food Service</u> <u>(51)</u>	<u>Child Care Operations</u> <u>(52)</u>	<u>Other Enterprise</u> <u>(58)</u>	<u>TOTAL</u>	<u>Internal Service</u> <u>(60)</u>
Contributions, Transfers, and Special and Extraordinary Items					
5200 Interfund Transfers – Out					
5300 Transfers Out to Component Units/Primary Governments					
5520 Special Items – Losses					
5530 Extraordinary Items – Losses					
9300 Interfund Transfers - IN	21,905			21,905	
9500 Capital Contributions					
9700 Transfers IN From Component Units/Primary Governments					
9920 Special Items – Gains					
9930 Extraordinary Items – Gains					
Change In Net Position	\$448,004		(\$4,638)	\$443,366	
0002 Net Position - Beginning of Fiscal Year	(1,199,181)		106,517	(1,092,664)	
0003 Accounting Changes / Residual Equity Transfers					
Net Position - End Of Year	(\$751,177)		\$101,879	(\$649,298)	

LEA : 121394603 Northwestern Lehigh SD

Printed 11/18/2022 2:54:08 PM

Amounts Expressed in Whole Dollars	<u>Food Service</u> <u>(51)</u>	<u>Child Care Operations</u> <u>(52)</u>	<u>Other Enterprise</u> <u>(58)</u>	<u>TOTAL</u>	<u>Internal Service(60)</u>
Cash Flows From Operating Activities					
0011 Cash Receipts From Users	113,775		21,591	135,366	
0012 Cash Receipts From Assessments Made to Other Funds					
0013 Cash Receipts From Earnings on Investments					
0014 Cash Receipts From Other Operating Revenue	26,855		6,018	32,873	
0015 Cash Payments To Employees For Services	407,963		5,295	413,258	
0016 Cash Payments For Insurance Claims					
0017 Cash Payments To Suppliers For Goods and Services	735,648		11,249	746,897	
0018 Cash Payments For Other Operating Expenses	600		1,002	1,602	
Net Cash Provided By (Used For) Operating Activities	(\$1,003,581)		\$10,063	(\$993,518)	
Cash Flows From Non-Capital Financing Activities					
0021 Receipts From Local Sources - 6000					
0022 Receipts From State Sources - 7000	80,519		736	81,255	
0023 Receipts From Federal Sources -8000	936,544			936,544	
0024 Notes and Loans Received (Repaid)					
0025 Interest Paid on Notes/Loans - 5100-830					
0026 Operating Transfers In (Out)/Residual Equity Trans					
0027 Operating Transfers In (Out) Primary Government / Comp Unit	21,905			21,905	
0028 Receipts From Refund of Prior Year Expenditures - 6991					
0029 Special and Extraordinary Gains (losses)					
0030 Receipts from Insurance Recoveries -9990					
Net Cash Prov By (Used for) Non-Capital Financing Activities	\$1,038,968		\$736	\$1,039,704	
Cash Flows From Capital and Related Financing Activities					
0031 Payments For Fac Acq, Const, and Imp - 4000	(35,346)		(6,900)	(42,246)	
0032 Gain / (Loss) on Sale of Fixed Assets - 6930					
0033 Proceeds From Extended Term Financing - 9200					
0034 Principal Paid on Financing Agreements					
0035 Interest Paid on Financing Agreements - 5100-830					
0036 (Inc) Dec in Contributed Capital					
Net Cash Prov By (Used for) Capital and Related Financing Activities	(\$35,346)		(\$6,900)	(\$42,246)	
Cash Flows From Investing Activities					
0041 Earnings on Investments - 6500			82	82	
0042 Purchase of Inv Securities / Deposits to Inv Pools					
0043 Receipts From Investment Pool Withdrawals					
0044 Proceeds from Sale and Maturity of Inv Securities					

LEA : 121394603 Northwestern Lehigh SD

Printed 11/18/2022 2:54:08 PM

0045 Loans Received (Paid)		
Net Cash Prov By (Used for) Investing Activities	\$82	\$82

LEA : 121394603 Northwestern Lehigh SD

Printed 11/18/2022 2:54:08 PM

	<u>Food Service</u> <u>(51)</u>	<u>Child Care Operations</u> <u>(52)</u>	<u>Other Enterprise</u> <u>(58)</u>	<u>TOTAL</u>	<u>Internal Service</u> <u>(60)</u>
Net Increase (Decrease) in Cash Flows	41		3,981	4,022	
0004 Cash and Cash Equivalents Beginning of Year					
Cash and Cash Equivalents at Year End	\$41		\$3,981	\$4,022	
Reconciliation of Operating Income (Loss) To Net Cash Provided by (Used For) Operating Activities					
0005 Operating Income (Loss) per REP	(769,321)		(5,456)	(774,777)	
Adjustments					
0051 Depreciation and Net Amortization	14,867		7,261	22,128	
0052 Provision for Uncollectible Accounts					
0053 Other Adjustments	36,211			36,211	
Effect of Changes in Assets, Liabilities, Deferred Outflows and Deferred Inflows					
0054 (Inc) Dec In Accounts Receivable (0120-0150)	1,604			1,604	
0055 Advances to Other Funds (0160)	(1,041,116)		(736)	(1,041,852)	
0056 (Inc) Dec in Inventories (0170)	7,615			7,615	
0057 (Inc) Dec in Prepaid Expenses (0180)	(1,533)			(1,533)	
0058 (Inc) Dec in Other Current or Noncurrent Assets					
0064 Deferred Outflows (0910)	(749)			(749)	
0059 Inc (Dec) in Accounts Payable (0400-0450)	63,109			63,109	
0060 Inc (Dec) in Accrued Salaries/Benefits (0461)	1,288			1,288	
0065 Inc (Dec) in Net Pension Liabilities (0570)	(154,895)			(154,895)	
0066 Inc (Dec) in Other Postemp Benefit Oblig (0560)	2,444			2,444	
0061 Inc (Dec) in Payroll Deductions/Withholding (0462)					
0062 Inc (Dec) in Unearned Revenue (0480)					
0063 Inc (Dec) in Other Current or Noncurrent Liabilities	728,983		8,994	737,977	
0067 Deferred Inflows (0950)	107,912			107,912	
Total Adjustments	(\$234,260)		\$15,519	(\$218,741)	
Cash Provided By (Used for) Total	(\$1,003,581)		\$10,063	(\$993,518)	

COMBINED STATEMENT OF CASH FLOWS
SCHEDULE OF NONCASH INVESTING, CAPITAL, AND FINANCING ACTIVITIES

Explanation of Transaction and Balance Sheet Effect	Amount
Total	

LEA : 121394603 Northwestern Lehigh SD

Printed 11/18/2022 2:54:12 PM

Amounts Expressed in Whole Dollars		<u>Private Purpose Trust</u> <u>(71)</u>	<u>Investment Trust</u> <u>(72)</u>	<u>Pension Trust</u> <u>(73)</u>	<u>Student Activity Custodial</u> <u>(81)</u>
Assets And Deferred Outflows Of Resources					
Assets					
0100	Cash and Cash Equivalents				
0110	Investments				
0130	Due From Other Funds				
0140	Due from Other Governments, Primary Government and Component Units				
0150	Other Receivables				
0170	Inventories				
0180	Prepaid Expenses (Expenditures)				
0190	Other Current Assets				
0220	Buildings and Building Improvements (Net)				
0230	Machinery, Equipment and Furniture (Net)				
Total Assets					
0910	Deferred Outflows of Resources				
Total Assets And Deferred Outflows Of Resources					

LEA : 121394603 Northwestern Lehigh SD

Printed 11/18/2022 2:54:12 PM

Amounts Expressed in Whole Dollars		<u>Other Custodial</u> <u>(89)</u>	<u>Fiduciary Component Units</u> <u>(98)</u>	<u>Total Fiduciary Funds</u>
Assets And Deferred Outflows Of Resources				
Assets				
0100	Cash and Cash Equivalents	84,253		84,253
0110	Investments			
0130	Due From Other Funds	424		424
0140	Due from Other Governments, Primary Government and Component Units			
0150	Other Receivables			
0170	Inventories			
0180	Prepaid Expenses (Expenditures)			
0190	Other Current Assets			
0220	Buildings and Building Improvements (Net)			
0230	Machinery, Equipment and Furniture (Net)			
Total Assets		\$84,677		\$84,677
0910	Deferred Outflows of Resources			
Total Assets And Deferred Outflows Of Resources		\$84,677		\$84,677

LEA : 121394603 Northwestern Lehigh SD

Printed 11/18/2022 2:54:12 PM

Amounts Expressed in Whole Dollars				
	<u>Private Purpose Trust</u> <u>(71)</u>	<u>Investment Trust</u> <u>(72)</u>	<u>Pension Trust</u> <u>(73)</u>	<u>Student Activity Custodial</u> <u>(81)</u>
Liabilities, Deferred Inflows Of Resources And Net Position				
Liabilities				
0400 Due to Other Funds				
0410 Due to Other Governments, Primary Government and Component Units				
0420 Accounts Payable				
0430 Contracts Payable				
0450 Short-Term Payables				
0460 Payroll Accruals and Withholdings				
0480 Unearned Revenues				
0490 Other Current Liabilities				
Total Liabilities				
0950 Deferred Inflows of Resources				
Net Position				
0791 Net Investment in Capital Assets				
0009 Restricted Net Position (0792 – 0798)				
0799 Unrestricted Net Position				
Total Net Position				
Total Liabilities, Deferred Inflows Of Resources And Net Position				

LEA : 121394603 Northwestern Lehigh SD

Printed 11/18/2022 2:54:12 PM

Amounts Expressed in Whole Dollars	<u>Other Custodial</u> <u>(89)</u>	<u>Fiduciary Component Units</u> <u>(98)</u>	<u>Total Fiduciary Funds</u>
Liabilities, Deferred Inflows Of Resources And Net Position			
Liabilities			
0400 Due to Other Funds	1,994		1,994
0410 Due to Other Governments, Primary Government and Component Units			
0420 Accounts Payable	904		904
0430 Contracts Payable			
0450 Short-Term Payables			
0460 Payroll Accruals and Withholdings			
0480 Unearned Revenues			
0490 Other Current Liabilities			
Total Liabilities	\$2,898		\$2,898
0950 Deferred Inflows of Resources			
Net Position			
0791 Net Investment in Capital Assets			
0009 Restricted Net Position (0792 – 0798)	81,779		81,779
0799 Unrestricted Net Position			
Total Net Position	\$81,779		\$81,779
Total Liabilities, Deferred Inflows Of Resources And Net Position	\$84,677		\$84,677

LEA : 121394603 Northwestern Lehigh SD

Printed 11/18/2022 2:54:15 PM

Amounts Expressed in Whole Dollars	<u>Private Purpose Trust</u> <u>(71)</u>	<u>Investment Trust</u> <u>(72)</u>	<u>Pension Trust</u> <u>(73)</u>	<u>Student Activity</u> <u>Custodial</u> <u>(81)</u>	<u>Other Custodial</u> <u>(89)</u>	<u>Fiduciary Component</u> <u>Units</u> <u>(98)</u>
Additions						
0091 Gifts and Contributions					6,318	
0095 Net Investment Earnings					88	
0092 Other Additions					43,101	
Deductions						
0093 Scholarships Awarded						
0094 Other Deductions					53,710	
Change In Net Position					(\$4,203)	
0006 Net Position – Beginning of Fiscal Year					85,982	
0007 Net Position Held in Trust for Pension Benefits						
Net Position - End of Fiscal Year					\$81,779	

LEA : 121394603 Northwestern Lehigh SD

Printed 11/18/2022 2:54:15 PM

Amounts Expressed in Whole Dollars		<u>Total Fiduciary</u>
		<u>Funds</u>
Additions		
0091	Gifts and Contributions	6,318
0095	Net Investment Earnings	88
0092	Other Additions	43,101
Deductions		
0093	Scholarships Awarded	
0094	Other Deductions	53,710
Change In Net Position		(\$4,203)
0006	Net Position – Beginning of Fiscal Year	85,982
0007	Net Position Held in Trust for Pension Benefits	
Net Position - End of Fiscal Year		\$81,779

	Revenue Reported In Current Year	Current Year Tax Accrual	Prior Year Tax Accrual	Taxes Collected In Current Year
Revenue from Local Sources				
6111 Current Real Estate Taxes	27,099,310.18			27,099,310.18
6112 Interim Real Estate Taxes	131,458.20			131,458.20
6113 Public Utility Realty Taxes	29,087.25			29,087.25
6114 Payments in Lieu of Current Taxes - State / Local	5,732.57			5,732.57
6143 Current Act 511 Local Services Taxes	52,902.31			52,902.31
6151 Current Act 511 Earned Income Taxes	2,943,197.61			2,943,197.61
6153 Current Act 511 Real Estate Transfer Taxes	451,104.30			451,104.30
6411 Delinquent Real Estate Taxes	532,992.39			532,992.39
6412 Delinquent Interim Real Estate Taxes	5,170.01			5,170.01
6500 Earnings on Investments	200,926.10			
6700 Revenues from LEA Activities	102,811.35			
6831 Federal Revenue Received from Other Pennsylvania Public LEAs	1,080.00			
6832 Federal IDEA Revenue Received as Pass Through	389,819.00			
6833 Federal ARRA IDEA Revenue Received as Pass Through	91,634.00			
6910 Rentals	8,359.64			
6920 Contributions and Donations from Private Sources	257,355.11			
6943 Adult Education Tuition	1,440.00			
6944 Receipts from Other LEAs in Pennsylvania - Education	1,619.14			
6991 Refunds of a Prior Year Expenditure	14,332.37			
6999 Other Revenues Not Specified Above	33,434.49			
TOTAL Revenue from Local Sources	\$32,353,766.02			\$31,250,954.82

	Revenue Reported In Current Year			
<u>Revenue from State Sources</u>				
7111 Basic Education Funding-Formula	5,872,497.41			
7112 Basic Education Funding-Social Security	749,243.31			
7160 Tuition for Orphans Subsidy	17,548.35			
7271 Special Education funds for School-Aged Pupils	1,423,535.73			
7311 Pupil Transportation Subsidy	969,667.93			
7312 Nonpublic and Charter School Pupil Transportation Subsidy	59,675.00			
7320 Rental and Sinking Fund Payments / Building Reimbursement Subsidy	410,039.10			
7330 Health Services (Medical, Dental, Nurse, Act 25)	36,838.63			
7340 State Property Tax Reduction Allocation	674,981.69			
7505 Ready to Learn Block Grant	230,490.00			
7820 State Share of Retirement Contributions	3,423,045.41			
TOTAL Revenue from State Sources	\$13,867,562.56			

Revenue Reported In Current Year				
Revenue from Federal Sources				
8514 NCLB, Title I - Improving the Academic Achievement of the Disadvantaged	205,463.00			
8515 NCLB, Title II - Preparing, Training and Recruiting High Quality Teachers and Principals	45,492.00			
8517 NCLB, Title IV - 21St Century Schools	13,223.00			
8743 ESSER II - Elementary and Secondary School Emergency Relief Fund	381,023.36			
8744 ARP ESSER - Elementary and Secondary School Emergency Relief Fund	664,419.94			
8751 ARP ESSER Learning Loss	29,271.90			
8752 ARP ESSER Summer Programs	14,582.00			
8753 ARP ESSER Afterschool Programs	4,674.83			
TOTAL Revenue from Federal Sources	\$1,358,150.03			
TOTAL FROM ALL SOURCES	\$47,579,478.61			\$31,250,954.82

LEA : 121394603 Northwestern Lehigh SD

Printed 11/18/2022 2:54:19 PM

	<u>General Fund (10)</u>	<u>Student Sponsored Activity Fund (21)</u>	<u>Public Purpose Trust (27)</u>	<u>Other Compt Approved (28)</u>	<u>Athletic / Activity (29)</u>	<u>Capital Reserve (690, 1850) (31)</u>
6000 Revenue from Local Sources						
6111 Current Real Estate Taxes	27,099,310.18					
6112 Interim Real Estate Taxes	131,458.20					
6113 Public Utility Realty Taxes	29,087.25					
6114 Payments in Lieu of Current Taxes - State / Local	5,732.57					
6143 Current Act 511 Local Services Taxes	52,902.31					
6151 Current Act 511 Earned Income Taxes	2,943,197.61					
6153 Current Act 511 Real Estate Transfer Taxes	451,104.30					
6411 Delinquent Real Estate Taxes	532,992.39					
6412 Delinquent Interim Real Estate Taxes	5,170.01					
6500 Earnings on Investments	200,926.10					
6700 Revenues from LEA Activities	102,811.35	56,781.46				
6831 Federal Revenue Received from Other Pennsylvania Public LEAs	1,080.00					
6832 Federal IDEA Revenue Received as Pass Through	389,819.00					
6833 Federal ARRA IDEA Revenue Received as Pass Through	91,634.00					
6910 Rentals	8,359.64					
6920 Contributions and Donations from Private Sources	257,355.11	3,179.53				
6943 Adult Education Tuition	1,440.00					
6944 Receipts from Other LEAs in Pennsylvania - Education	1,619.14					
6991 Refunds of a Prior Year Expenditure	14,332.37					
6999 Other Revenues Not Specified Above	33,434.49					
6000 Total Revenue from Local Sources	\$32,353,766.02	\$59,960.99				
7000 Revenue from State Sources						
7111 Basic Education Funding-Formula	5,872,497.41					
7112 Basic Education Funding-Social Security	749,243.31					
7160 Tuition for Orphans Subsidy	17,548.35					
7271 Special Education funds for School-Aged Pupils	1,423,535.73					
7311 Pupil Transportation Subsidy	969,667.93					
7312 Nonpublic and Charter School Pupil Transportation Subsidy	59,675.00					
7320 Rental and Sinking Fund Payments / Building Reimbursement Subsidy	410,039.10					
7330 Health Services (Medical, Dental, Nurse, Act 25)	36,838.63					
7340 State Property Tax Reduction Allocation	674,981.69					
7505 Ready to Learn Block Grant	230,490.00					
7820 State Share of Retirement Contributions	3,423,045.41					
7000 Total Revenue from State Sources	\$13,867,562.56					

LEA : 121394603 Northwestern Lehigh SD

Printed 11/18/2022 2:54:19 PM

	<u>Capital Reserve</u> <u>(1431) (32)</u>	<u>Other Capital</u> <u>Projects Fund (39)</u>	<u>Debt Service (40)</u>	<u>Permanent (90)</u>	<u>Total</u>
6000 Revenue from Local Sources					
6111 Current Real Estate Taxes					27,099,310.18
6112 Interim Real Estate Taxes					131,458.20
6113 Public Utility Realty Taxes					29,087.25
6114 Payments in Lieu of Current Taxes - State / Local					5,732.57
6143 Current Act 511 Local Services Taxes					52,902.31
6151 Current Act 511 Earned Income Taxes					2,943,197.61
6153 Current Act 511 Real Estate Transfer Taxes					451,104.30
6411 Delinquent Real Estate Taxes					532,992.39
6412 Delinquent Interim Real Estate Taxes					5,170.01
6500 Earnings on Investments	12,514.01	283.59			213,723.70
6700 Revenues from LEA Activities					159,592.81
6831 Federal Revenue Received from Other Pennsylvania Public LEAs					1,080.00
6832 Federal IDEA Revenue Received as Pass Through					389,819.00
6833 Federal ARRA IDEA Revenue Received as Pass Through					91,634.00
6910 Rentals					8,359.64
6920 Contributions and Donations from Private Sources					260,534.64
6943 Adult Education Tuition					1,440.00
6944 Receipts from Other LEAs in Pennsylvania - Education					1,619.14
6991 Refunds of a Prior Year Expenditure					14,332.37
6999 Other Revenues Not Specified Above					33,434.49
6000 Total Revenue from Local Sources	\$12,514.01	\$283.59			\$32,426,524.61
7000 Revenue from State Sources					
7111 Basic Education Funding-Formula					5,872,497.41
7112 Basic Education Funding-Social Security					749,243.31
7160 Tuition for Orphans Subsidy					17,548.35
7271 Special Education funds for School-Aged Pupils					1,423,535.73
7311 Pupil Transportation Subsidy					969,667.93
7312 Nonpublic and Charter School Pupil Transportation Subsidy					59,675.00
7320 Rental and Sinking Fund Payments / Building Reimbursement Subsidy					410,039.10
7330 Health Services (Medical, Dental, Nurse, Act 25)					36,838.63
7340 State Property Tax Reduction Allocation					674,981.69
7505 Ready to Learn Block Grant					230,490.00
7820 State Share of Retirement Contributions					3,423,045.41
7000 Total Revenue from State Sources					\$13,867,562.56

LEA : 121394603 Northwestern Lehigh SD

Printed 11/18/2022 2:54:19 PM

	<u>General Fund (10)</u>	<u>Student Sponsored Activity Fund (21)</u>	<u>Public Purpose Trust (27)</u>	<u>Other Compt Approved (28)</u>	<u>Athletic / Activity (29)</u>	<u>Capital Reserve (690, 1850) (31)</u>
8000 Revenue from Federal Sources						
8514 NCLB, Title I - Improving the Academic Achievement of the Disadvantaged	205,463.00					
8515 NCLB, Title II - Preparing, Training and Recruiting High Quality Teachers and Principals	45,492.00					
8517 NCLB, Title IV - 21st Century Schools	13,223.00					
8743 ESSER II - Elementary and Secondary School Emergency Relief Fund	381,023.36					
8744 ARP ESSER - Elementary and Secondary School Emergency Relief Fund	664,419.94					
8751 ARP ESSER Learning Loss	29,271.90					
8752 ARP ESSER Summer Programs	14,582.00					
8753 ARP ESSER Afterschool Programs	4,674.83					
8000 Total Revenue from Federal Sources	\$1,358,150.03					
9000 Other Financing Sources						
9120 Proceeds from Refunding of Bonds						
9310 General Fund Transfers						
9000 Total Other Financing Sources						
Total From All Sources	\$47,579,478.61	\$59,960.99				

LEA : 121394603 Northwestern Lehigh SD

Printed 11/18/2022 2:54:19 PM

	<u>Capital Reserve</u> <u>(1431) (32)</u>	<u>Other Capital</u> <u>Projects Fund (39)</u>	<u>Debt Service (40)</u>	<u>Permanent (90)</u>	<u>Total</u>
8000 Revenue from Federal Sources					
8514 NCLB, Title I - Improving the Academic Achievement of the Disadvantaged					205,463.00
8515 NCLB, Title II - Preparing, Training and Recruiting High Quality Teachers and Principals					45,492.00
8517 NCLB, Title IV - 21st Century Schools					13,223.00
8743 ESSER II - Elementary and Secondary School Emergency Relief Fund					381,023.36
8744 ARP ESSER - Elementary and Secondary School Emergency Relief Fund					664,419.94
8751 ARP ESSER Learning Loss					29,271.90
8752 ARP ESSER Summer Programs					14,582.00
8753 ARP ESSER Afterschool Programs					4,674.83
8000 Total Revenue from Federal Sources					\$1,358,150.03
9000 Other Financing Sources					
9120 Proceeds from Refunding of Bonds			5,780,000.00		5,780,000.00
9310 General Fund Transfers	612,868.00		48,931.35		661,799.35
9000 Total Other Financing Sources	\$612,868.00		\$5,828,931.35		\$6,441,799.35
Total From All Sources	\$625,382.01	\$283.59	\$5,828,931.35		\$54,094,036.55

LEA : 121394603 Northwestern Lehigh SD

Printed 11/18/2022 2:54:22 PM

	<u>General Fund (10)</u>	<u>Student Sponsored Activity Fund (21)</u>	<u>Public Purpose Trust (27)</u>	<u>Other Compt Approved (28)</u>	<u>Athletic / Activity (29)</u>	<u>Capital Reserve (690. 1850) (31)</u>
Revenue from Local Sources	32,353,766.02	59,960.99				
Revenue from State Sources	13,867,562.56					
Revenue from Federal Sources	1,358,150.03					
Other Financing Sources						
Total From All Sources	\$47,579,478.61	\$59,960.99				

LEA : 121394603 Northwestern Lehigh SD

Printed 11/18/2022 2:54:22 PM

	<u>Capital Reserve (1431)</u> <u>(32)</u>	<u>Other Capital Projects</u> <u>Fund (39)</u>	<u>Debt Service (40)</u>	<u>Permanent (90)</u>	<u>Total</u>
Revenue from Local Sources	12,514.01	283.59			32,426,524.61
Revenue from State Sources					13,867,562.56
Revenue from Federal Sources					1,358,150.03
Other Financing Sources	612,868.00		5,828,931.35		6,441,799.35
Total From All Sources	\$625,382.01	\$283.59	\$5,828,931.35		\$54,094,036.55

LEA : 121394603 Northwestern Lehigh SD

Printed 11/18/2022 2:54:25 PM

General Fund (10)

1000 Instruction	Total
100 <u>Personnel Services – Salaries</u>	
100 Personnel Services – Salaries	12,470,663.60
Total Personnel Services – Salaries	\$12,470,663.60
200 <u>Personnel Services – Employee Benefits</u>	
210 Group Insurance – Contracted Provider	1,997,771.28
220 Social Security Contributions	920,387.60
230 PSERS Retirement Contributions	4,261,665.49
250 Unemployment Compensation	2,977.79
260 Workers' Compensation	93,114.42
299 All Other Employee Benefits	72,230.00
Total Personnel Services – Employee Benefits	\$7,348,146.58
300 <u>Purchased Professional and Technical Services</u>	
322 Professional Educational Services – Ius	1,054,517.17
329 Professional Educational Services – Other	672,995.81
390 Other Purchased Professional and Technical Services	5,000.00
Total Purchased Professional and Technical Services	\$1,732,512.98
400 <u>Purchased Property Services</u>	
430 Repairs and Maintenance Services	6,848.48
440 Rentals	17,924.70
Total Purchased Property Services	\$24,773.18
500 <u>Other Purchased Services</u>	
530 Communications	17,207.32
550 Printing and Binding	751.90
562 Tuition To Pennsylvania Charter Schools	1,983,336.19
564 Tuition To Career and Technology Centers	1,356,096.12
566 Tuition To Institutions of Higher Education and Technical Institutes	234,732.96
580 Travel	4,197.81
Total Other Purchased Services	\$3,596,322.30
600 <u>Supplies</u>	
610 General Supplies	175,676.83
630 Food	605.62
640 Books and Periodicals	83,872.56
650 Supplies & Fees – Technology Related	558,735.85
Total Supplies	\$818,890.86
700 <u>Property</u>	
756 Capitalized Technology Equipment– Original	3,725.00
758 Capitalized Technology Software - Original	2,345.00
762 Capitalized Equipment - Replacement	6,813.00
766 Capitalized Technology Equipment– Replacement	53,600.00
Total Property	\$66,483.00
800 <u>Other Objects</u>	

LEA : 121394603 Northwestern Lehigh SD

Printed 11/18/2022 2:54:25 PM

General Fund (10)		
1000 Instruction		<u>Total</u>
800 <u>Other Objects</u>		
810 Dues and Fees		4,945.20
Total Other Objects		\$4,945.20
Total 1000 Instruction		\$26,062,737.70

LEA : 121394603 Northwestern Lehigh SD

Printed 11/18/2022 2:54:25 PM

General Fund (10)

1100 Regular Programs – Elementary / Secondary	Elementary	Secondary	Federal	Total
100 Personnel Services – Salaries				
100 Personnel Services – Salaries	4,763,152.15	4,664,062.78	309,395.18	9,736,610.11
Total Personnel Services – Salaries	\$4,763,152.15	\$4,664,062.78	\$309,395.18	\$9,736,610.11
200 Personnel Services – Employee Benefits				
210 Group Insurance – Contracted Provider	786,925.84	751,365.13	20,023.82	1,558,314.79
220 Social Security Contributions	373,449.84	343,945.06		717,394.90
230 PSERS Retirement Contributions	1,721,083.16	1,598,191.45		3,319,274.61
250 Unemployment Compensation	1,488.90	1,488.89		2,977.79
260 Workers' Compensation	34,499.06	34,499.05		68,998.11
299 All Other Employee Benefits	36,115.00	36,115.00		72,230.00
Total Personnel Services – Employee Benefits	\$2,953,561.80	\$2,765,604.58	\$20,023.82	\$5,739,190.20
300 Purchased Professional and Technical Services				
329 Professional Educational Services – Other	24,917.05	54,870.30	238,609.48	318,396.83
390 Other Purchased Professional and Technical Services	4,000.00	1,000.00		5,000.00
Total Purchased Professional and Technical Services	\$28,917.05	\$55,870.30	\$238,609.48	\$323,396.83
400 Purchased Property Services				
430 Repairs and Maintenance Services	6,098.46	750.02		6,848.48
440 Rentals	9,593.46	8,331.24		17,924.70
Total Purchased Property Services	\$15,691.92	\$9,081.26		\$24,773.18
500 Other Purchased Services				
530 Communications	8,603.66	8,603.66		17,207.32
550 Printing and Binding	478.22	273.68		751.90
562 Tuition To Pennsylvania Charter Schools	1,035,891.21	384,061.97		1,419,953.18
580 Travel	865.02	955.16	216.32	2,036.50
Total Other Purchased Services	\$1,045,838.11	\$393,894.47	\$216.32	\$1,439,948.90
600 Supplies				
610 General Supplies	72,113.42	62,121.07	38,424.09	172,658.58
630 Food	35.66	222.96	347.00	605.62
640 Books and Periodicals	31,077.04	33,625.08	17,618.15	82,320.27
650 Supplies & Fees – Technology Related	104,793.29	130,215.14	302,476.11	537,484.54
Total Supplies	\$208,019.41	\$226,184.25	\$358,865.35	\$793,069.01
700 Property				
756 Capitalized Technology Equipment – Original	1,241.54	2,483.46		3,725.00
758 Capitalized Technology Software - Original	781.59	1,563.41		2,345.00
762 Capitalized Equipment - Replacement			6,813.00	6,813.00
766 Capitalized Technology Equipment – Replacement	17,866.56	35,733.44		53,600.00
Total Property	\$19,889.69	\$39,780.31	\$6,813.00	\$66,483.00
800 Other Objects				
810 Dues and Fees	2,727.16	2,218.04		4,945.20
Total Other Objects	\$2,727.16	\$2,218.04		\$4,945.20
Total 1100 Regular Programs – Elementary / Secondary	\$9,037,797.29	\$8,156,695.99	\$933,923.15	\$18,128,416.43

LEA : 121394603 Northwestern Lehigh SD

Printed 11/18/2022 2:54:25 PM

General Fund (10)

1110 Regular Programs

	Elementary	Secondary	Federal	Total
100 <u>Personnel Services – Salaries</u>				
100 Personnel Services – Salaries	4,763,152.15	4,664,062.78		9,427,214.93
Total Personnel Services – Salaries	\$4,763,152.15	\$4,664,062.78		\$9,427,214.93
200 <u>Personnel Services – Employee Benefits</u>				
210 Group Insurance – Contracted Provider	786,925.84	751,365.13		1,538,290.97
220 Social Security Contributions	373,449.84	343,945.06		717,394.90
230 PSERS Retirement Contributions	1,721,083.16	1,598,191.45		3,319,274.61
250 Unemployment Compensation	1,488.90	1,488.89		2,977.79
260 Workers' Compensation	34,499.06	34,499.05		68,998.11
299 All Other Employee Benefits	36,115.00	36,115.00		72,230.00
Total Personnel Services – Employee Benefits	\$2,953,561.80	\$2,765,604.58		\$5,719,166.38
300 <u>Purchased Professional and Technical Services</u>				
329 Professional Educational Services – Other	24,917.05	54,870.30		79,787.35
390 Other Purchased Professional and Technical Services	4,000.00	1,000.00		5,000.00
Total Purchased Professional and Technical Services	\$28,917.05	\$55,870.30		\$84,787.35
400 <u>Purchased Property Services</u>				
430 Repairs and Maintenance Services	6,098.46	750.02		6,848.48
440 Rentals	9,593.46	8,331.24		17,924.70
Total Purchased Property Services	\$15,691.92	\$9,081.26		\$24,773.18
500 <u>Other Purchased Services</u>				
530 Communications	8,603.66	8,603.66		17,207.32
550 Printing and Binding	478.22	273.68		751.90
562 Tuition To Pennsylvania Charter Schools	1,035,891.21	384,061.97		1,419,953.18
580 Travel	865.02	955.16		1,820.18
Total Other Purchased Services	\$1,045,838.11	\$393,894.47		\$1,439,732.58
600 <u>Supplies</u>				
610 General Supplies	72,113.42	62,121.07		134,234.49
630 Food	35.66	222.96		258.62
640 Books and Periodicals	31,077.04	33,625.08		64,702.12
650 Supplies & Fees – Technology Related	104,793.29	130,215.14		235,008.43
Total Supplies	\$208,019.41	\$226,184.25		\$434,203.66
700 <u>Property</u>				
756 Capitalized Technology Equipment– Original	1,241.54	2,483.46		3,725.00
758 Capitalized Technology Software - Original	781.59	1,563.41		2,345.00
766 Capitalized Technology Equipment– Replacement	17,866.56	35,733.44		53,600.00
Total Property	\$19,889.69	\$39,780.31		\$59,670.00
800 <u>Other Objects</u>				
810 Dues and Fees	2,727.16	2,218.04		4,945.20
Total Other Objects	\$2,727.16	\$2,218.04		\$4,945.20
Total 1110 Regular Programs	\$9,037,797.29	\$8,156,695.99		\$17,194,493.28

LEA : 121394603 Northwestern Lehigh SD

Printed 11/18/2022 2:54:25 PM

General Fund (10)

1190 Federally-Funded Regular Programs	<u>Elementary</u>	<u>Secondary</u>	<u>Federal</u>	<u>Total</u>
100 <u>Personnel Services – Salaries</u>				
100 Personnel Services – Salaries			309,395.18	309,395.18
Total Personnel Services – Salaries			\$309,395.18	\$309,395.18
200 <u>Personnel Services – Employee Benefits</u>				
210 Group Insurance – Contracted Provider			20,023.82	20,023.82
Total Personnel Services – Employee Benefits			\$20,023.82	\$20,023.82
300 <u>Purchased Professional and Technical Services</u>				
329 Professional Educational Services – Other			238,609.48	238,609.48
Total Purchased Professional and Technical Services			\$238,609.48	\$238,609.48
500 <u>Other Purchased Services</u>				
580 Travel			216.32	216.32
Total Other Purchased Services			\$216.32	\$216.32
600 <u>Supplies</u>				
610 General Supplies			38,424.09	38,424.09
630 Food			347.00	347.00
640 Books and Periodicals			17,618.15	17,618.15
650 Supplies & Fees – Technology Related			302,476.11	302,476.11
Total Supplies			\$358,865.35	\$358,865.35
700 <u>Property</u>				
762 Capitalized Equipment - Replacement			6,813.00	6,813.00
Total Property			\$6,813.00	\$6,813.00
Total 1190 Federally-Funded Regular Programs			\$933,923.15	\$933,923.15

LEA : 121394603 Northwestern Lehigh SD

Printed 11/18/2022 2:54:25 PM

General Fund (10)

1200 Special Programs – Elementary / Secondary	Elementary	Secondary	Federal	Total
100 Personnel Services – Salaries				
100 Personnel Services – Salaries	1,115,175.65	1,174,204.52	444,673.32	2,734,053.49
Total Personnel Services – Salaries	\$1,115,175.65	\$1,174,204.52	\$444,673.32	\$2,734,053.49
200 Personnel Services – Employee Benefits				
210 Group Insurance – Contracted Provider	188,875.33	243,860.38	6,720.78	439,456.49
220 Social Security Contributions	93,369.53	109,623.17		202,992.70
230 PSERS Retirement Contributions	435,140.33	507,250.55		942,390.88
260 Workers' Compensation	12,058.16	12,058.15		24,116.31
Total Personnel Services – Employee Benefits	\$729,443.35	\$872,792.25	\$6,720.78	\$1,608,956.38
300 Purchased Professional and Technical Services				
322 Professional Educational Services – Ius	348,076.72	614,806.45	91,634.00	1,054,517.17
329 Professional Educational Services – Other	33,392.74	320,156.24		353,548.98
Total Purchased Professional and Technical Services	\$381,469.46	\$934,962.69	\$91,634.00	\$1,408,066.15
500 Other Purchased Services				
562 Tuition To Pennsylvania Charter Schools	426,737.98	136,645.03		563,383.01
580 Travel	1,294.42	866.89		2,161.31
Total Other Purchased Services	\$428,032.40	\$137,511.92		\$565,544.32
600 Supplies				
610 General Supplies	2,422.18	596.07		3,018.25
640 Books and Periodicals	565.99	986.30		1,552.29
650 Supplies & Fees – Technology Related	10,325.70	10,925.61		21,251.31
Total Supplies	\$13,313.87	\$12,507.98		\$25,821.85
Total 1200 Special Programs – Elementary / Secondary	\$2,667,434.73	\$3,131,979.36	\$543,028.10	\$6,342,442.19

LEA : 121394603 Northwestern Lehigh SD

Printed 11/18/2022 2:54:25 PM

General Fund (10)

1210 Life Skills Support

	<u>Elementary</u>	<u>Secondary</u>	<u>Federal</u>	<u>Total</u>
100 <u>Personnel Services – Salaries</u>				
100 Personnel Services – Salaries		65,541.25	16,694.78	82,236.03
Total Personnel Services – Salaries		\$65,541.25	\$16,694.78	\$82,236.03
200 <u>Personnel Services – Employee Benefits</u>				
210 Group Insurance – Contracted Provider		19,446.04		19,446.04
220 Social Security Contributions		6,035.63		6,035.63
230 PSERS Retirement Contributions		28,477.26		28,477.26
Total Personnel Services – Employee Benefits		\$53,958.93		\$53,958.93
Total 1210 Life Skills Support		\$119,500.18	\$16,694.78	\$136,194.96

LEA : 121394603 Northwestern Lehigh SD

Printed 11/18/2022 2:54:25 PM

General Fund (10)

1220 Sensory Support	<u>Elementary</u>	<u>Secondary</u>	<u>Federal</u>	<u>Total</u>
100 <u>Personnel Services – Salaries</u>				
100 Personnel Services – Salaries	82,271.78	49,788.20		132,059.98
Total Personnel Services – Salaries	\$82,271.78	\$49,788.20		\$132,059.98
200 <u>Personnel Services – Employee Benefits</u>				
210 Group Insurance – Contracted Provider	235.56	6,311.48		6,547.04
220 Social Security Contributions	6,293.91	3,787.06		10,080.97
230 PSERS Retirement Contributions	27,697.51	16,403.75		44,101.26
Total Personnel Services – Employee Benefits	\$34,226.98	\$26,502.29		\$60,729.27
300 <u>Purchased Professional and Technical Services</u>				
329 Professional Educational Services – Other	2,916.00	2,916.00		5,832.00
Total Purchased Professional and Technical Services	\$2,916.00	\$2,916.00		\$5,832.00
500 <u>Other Purchased Services</u>				
580 Travel	43.48	43.48		86.96
Total Other Purchased Services	\$43.48	\$43.48		\$86.96
Total 1220 Sensory Support	\$119,458.24	\$79,249.97		\$198,708.21

General Fund (10)

1230 Emotional Support	Elementary	Secondary	Federal	Total
100 <u>Personnel Services – Salaries</u>				
100 Personnel Services – Salaries	111,219.57	193,731.43	170,571.38	475,522.38
Total Personnel Services – Salaries	\$111,219.57	\$193,731.43	\$170,571.38	\$475,522.38
200 <u>Personnel Services – Employee Benefits</u>				
210 Group Insurance – Contracted Provider	14,545.26	76,080.14		90,625.40
220 Social Security Contributions	8,404.74	27,319.82		35,724.56
230 PSERS Retirement Contributions	37,902.00	124,723.43		162,625.43
260 Workers' Compensation	2,323.10	2,323.10		4,646.20
Total Personnel Services – Employee Benefits	\$63,175.10	\$230,446.49		\$293,621.59
500 <u>Other Purchased Services</u>				
580 Travel	249.28	255.76		505.04
Total Other Purchased Services	\$249.28	\$255.76		\$505.04
600 <u>Supplies</u>				
610 General Supplies	25.13	50.28		75.41
Total Supplies	\$25.13	\$50.28		\$75.41
Total 1230 Emotional Support	\$174,669.08	\$424,483.96	\$170,571.38	\$769,724.42

LEA : 121394603 Northwestern Lehigh SD

Printed 11/18/2022 2:54:25 PM

General Fund (10)

1240 Academic Support	Elementary	Secondary	Federal	Total
100 <u>Personnel Services – Salaries</u>				
100 Personnel Services – Salaries	921,684.30	865,143.64	257,407.16	2,044,235.10
Total Personnel Services – Salaries	\$921,684.30	\$865,143.64	\$257,407.16	\$2,044,235.10
200 <u>Personnel Services – Employee Benefits</u>				
210 Group Insurance – Contracted Provider	174,094.51	142,022.72	6,720.78	322,838.01
220 Social Security Contributions	78,670.88	72,480.66		151,151.54
230 PSERS Retirement Contributions	369,540.82	337,646.11		707,186.93
260 Workers' Compensation	9,735.06	9,735.05		19,470.11
Total Personnel Services – Employee Benefits	\$632,041.27	\$561,884.54	\$6,720.78	\$1,200,646.59
300 <u>Purchased Professional and Technical Services</u>				
329 Professional Educational Services – Other	129.50	129.50		259.00
Total Purchased Professional and Technical Services	\$129.50	\$129.50		\$259.00
500 <u>Other Purchased Services</u>				
580 Travel	1,001.66	567.65		1,569.31
Total Other Purchased Services	\$1,001.66	\$567.65		\$1,569.31
600 <u>Supplies</u>				
610 General Supplies	2,397.05	545.79		2,942.84
640 Books and Periodicals	565.99	986.30		1,552.29
650 Supplies & Fees – Technology Related	10,325.70	10,925.61		21,251.31
Total Supplies	\$13,288.74	\$12,457.70		\$25,746.44
Total 1240 Academic Support	\$1,568,145.47	\$1,440,183.03	\$264,127.94	\$3,272,456.44

LEA : 121394603 Northwestern Lehigh SD

Printed 11/18/2022 2:54:25 PM

General Fund (10)

1241 Learning Support – Public	Elementary	Secondary	Federal	Total
100 Personnel Services – Salaries				
100 Personnel Services – Salaries	913,947.63	798,027.11	208,131.69	1,920,106.43
Total Personnel Services – Salaries	\$913,947.63	\$798,027.11	\$208,131.69	\$1,920,106.43
200 Personnel Services – Employee Benefits				
210 Group Insurance – Contracted Provider	170,376.23	125,800.09		296,176.32
220 Social Security Contributions	75,534.07	66,430.07		141,964.14
230 PSERS Retirement Contributions	354,939.92	308,930.80		663,870.72
260 Workers' Compensation	9,735.06	9,735.05		19,470.11
Total Personnel Services – Employee Benefits	\$610,585.28	\$510,896.01		\$1,121,481.29
300 Purchased Professional and Technical Services				
329 Professional Educational Services – Other	129.50	129.50		259.00
Total Purchased Professional and Technical Services	\$129.50	\$129.50		\$259.00
500 Other Purchased Services				
580 Travel	567.64	567.65		1,135.29
Total Other Purchased Services	\$567.64	\$567.65		\$1,135.29
600 Supplies				
610 General Supplies	1,780.77	545.79		2,326.56
640 Books and Periodicals	565.99	986.30		1,552.29
650 Supplies & Fees – Technology Related	10,325.70	10,925.61		21,251.31
Total Supplies	\$12,672.46	\$12,457.70		\$25,130.16
Total 1241 Learning Support – Public	\$1,537,902.51	\$1,322,077.97	\$208,131.69	\$3,068,112.17

LEA : 121394603 Northwestern Lehigh SD

Printed 11/18/2022 2:54:25 PM

General Fund (10)

1243 Gifted Support

	<u>Elementary</u>	<u>Secondary</u>	<u>Federal</u>	<u>Total</u>
100 <u>Personnel Services – Salaries</u>				
100 Personnel Services – Salaries	7,736.67	67,116.53	49,275.47	124,128.67
Total Personnel Services – Salaries	\$7,736.67	\$67,116.53	\$49,275.47	\$124,128.67
200 <u>Personnel Services – Employee Benefits</u>				
210 Group Insurance – Contracted Provider	3,718.28	16,222.63	6,720.78	26,661.69
220 Social Security Contributions	3,136.81	6,050.59		9,187.40
230 PSERS Retirement Contributions	14,600.90	28,715.31		43,316.21
Total Personnel Services – Employee Benefits	\$21,455.99	\$50,988.53	\$6,720.78	\$79,165.30
500 <u>Other Purchased Services</u>				
580 Travel	434.02			434.02
Total Other Purchased Services	\$434.02			\$434.02
600 <u>Supplies</u>				
610 General Supplies	616.28			616.28
Total Supplies	\$616.28			\$616.28
Total 1243 Gifted Support	\$30,242.96	\$118,105.06	\$55,996.25	\$204,344.27

LEA : 121394603 Northwestern Lehigh SD

Printed 11/18/2022 2:54:25 PM

General Fund (10)

1290 Special Programs - Other Support	<u>Elementary</u>	<u>Secondary</u>	<u>Federal</u>	<u>Total</u>
300 <u>Purchased Professional and Technical Services</u>				
322 Professional Educational Services – Ius	348,076.72	614,806.45	91,634.00	1,054,517.17
329 Professional Educational Services – Other	30,347.24	317,110.74		347,457.98
Total Purchased Professional and Technical Services	\$378,423.96	\$931,917.19	\$91,634.00	\$1,401,975.15
500 <u>Other Purchased Services</u>				
562 Tuition To Pennsylvania Charter Schools	426,737.98	136,645.03		563,383.01
Total Other Purchased Services	\$426,737.98	\$136,645.03		\$563,383.01
Total 1290 Special Programs - Other Support	\$805,161.94	\$1,068,562.22	\$91,634.00	\$1,965,358.16

LEA : 121394603 Northwestern Lehigh SD

Printed 11/18/2022 2:54:25 PM

General Fund (10)

1300 Vocational Education

500 Other Purchased Services

	<u>Elementary</u>	<u>Secondary</u>	<u>Federal</u>	<u>Total</u>
564 Tuition To Career and Technology Centers		1,356,096.12		1,356,096.12
Total Other Purchased Services		\$1,356,096.12		\$1,356,096.12
Total 1300 Vocational Education		\$1,356,096.12		\$1,356,096.12

LEA : 121394603 Northwestern Lehigh SD

Printed 11/18/2022 2:54:25 PM

General Fund (10)

1600 Adult Education Programs	<u>Elementary</u>	<u>Secondary</u>	<u>Federal</u>	<u>Total</u>
300 <u>Purchased Professional and Technical Services</u>				
329 Professional Educational Services – Other				1,050.00
Total Purchased Professional and Technical Services				\$1,050.00
500 <u>Other Purchased Services</u>				
566 Tuition To Institutions of Higher Education and Technical Institutes				234,642.96
Total Other Purchased Services				\$234,642.96
Total 1600 Adult Education Programs				\$235,692.96

LEA : 121394603 Northwestern Lehigh SD

Printed 11/18/2022 2:54:25 PM

General Fund (10)

1700 Higher Education Programs for Secondary Students	<u>Elementary</u>	<u>Secondary</u>	<u>Federal</u>	<u>Total</u>
500 <u>Other Purchased Services</u>				
566 Tuition To Institutions of Higher Education and Technical Institutes				90.00
Total Other Purchased Services				\$90.00
Total 1700 Higher Education Programs for Secondary Students				\$90.00

LEA : 121394603 Northwestern Lehigh SD

Printed 11/18/2022 2:54:29 PM

General Fund (10)

2000 Support Services

Total

100	<u>Personnel Services – Salaries</u>	
100	Personnel Services – Salaries	7,055,302.55
Total Personnel Services – Salaries		\$7,055,302.55
200	<u>Personnel Services – Employee Benefits</u>	
210	Group Insurance – Contracted Provider	771,780.91
220	Social Security Contributions	536,726.28
230	PSERS Retirement Contributions	2,385,171.19
240	Tuition Reimbursement	99,916.47
260	Workers' Compensation	40,327.58
299	All Other Employee Benefits	84,907.27
Total Personnel Services – Employee Benefits		\$3,918,829.70
300	<u>Purchased Professional and Technical Services</u>	
329	Professional Educational Services – Other	18,101.30
330	Other Professional Services	277,759.98
340	Technical Services	8,930.50
360	Employee Training and Development Services	31,192.96
390	Other Purchased Professional and Technical Services	3,720.00
Total Purchased Professional and Technical Services		\$339,704.74
400	<u>Purchased Property Services</u>	
410	Cleaning Services	38,122.14
420	Utility Services	79,860.01
430	Repairs and Maintenance Services	327,006.05
440	Rentals	22,520.32
460	Extermination Services	6,909.60
490	Other Purchased Property Services	56,153.54
Total Purchased Property Services		\$530,571.66
500	<u>Other Purchased Services</u>	
513	Contracted Carriers	83,355.70
516	Student Transportation Services From the IU	34,324.04
520	Insurance – General	37,235.00
522	Automotive Liability Insurance	53,654.00
523	General Property and Liability Insurance	135,792.84
529	Other Insurance	10,542.00
530	Communications	104,213.55
549	Other Advertising/Public Relations	25,026.85
550	Printing and Binding	7,364.48
580	Travel	10,921.38
595	IU Payments By Withholding	42,811.14
Total Other Purchased Services		\$545,240.98
600	<u>Supplies</u>	
610	General Supplies	640,797.27
620	Energy	798,800.48
630	Food	5,678.14
640	Books and Periodicals	18,958.63

LEA : 121394603 Northwestern Lehigh SD

Printed 11/18/2022 2:54:29 PM

General Fund (10)

2000 Support Services

Total

600 <u>Supplies</u>	
650 Supplies & Fees – Technology Related	339,602.36
Total Supplies	\$1,803,836.88
700 <u>Property</u>	
752 Capital Equipment – Original and Additional	10,034.00
762 Capitalized Equipment - Replacement	164,405.00
Total Property	\$174,439.00
800 <u>Other Objects</u>	
810 Dues and Fees	51,462.33
820 Claims and Judgments Against the LEA	13,479.10
Total Other Objects	\$64,941.43
Total 2000 Support Services	\$14,432,866.94

LEA : 121394603 Northwestern Lehigh SD

Printed 11/18/2022 2:54:29 PM

General Fund (10)

2100 Support Services – Students	Elementary	Secondary	Federal	Total
100 <u>Personnel Services – Salaries</u>				
100 Personnel Services – Salaries	254,872.21	428,103.28	187,769.34	870,744.83
Total Personnel Services – Salaries	\$254,872.21	\$428,103.28	\$187,769.34	\$870,744.83
200 <u>Personnel Services – Employee Benefits</u>				
210 Group Insurance – Contracted Provider	55,836.05	84,178.07	27,072.35	168,731.13
220 Social Security Contributions	24,929.51	38,805.25		68,983.33
230 PSERS Retirement Contributions	117,122.19	179,752.05		321,034.29
260 Workers' Compensation	2,965.04	2,965.03		5,930.07
299 All Other Employee Benefits	2,904.15	2,904.15		5,808.30
Total Personnel Services – Employee Benefits	\$203,756.94	\$308,604.55	\$27,072.35	\$570,487.12
300 <u>Purchased Professional and Technical Services</u>				
330 Other Professional Services			82,058.50	82,058.50
Total Purchased Professional and Technical Services			\$82,058.50	\$82,058.50
400 <u>Purchased Property Services</u>				
440 Rentals		123.11		123.11
Total Purchased Property Services		\$123.11		\$123.11
500 <u>Other Purchased Services</u>				
550 Printing and Binding	56.52	56.53		113.05
580 Travel	81.22	81.23		443.16
Total Other Purchased Services	\$137.74	\$137.76		\$556.21
600 <u>Supplies</u>				
610 General Supplies	223.44	19,391.63		19,615.07
650 Supplies & Fees – Technology Related	1,042.88	6,371.53		7,414.41
Total Supplies	\$1,266.32	\$25,763.16		\$27,029.48
800 <u>Other Objects</u>				
810 Dues and Fees	385.00	710.00		1,095.00
Total Other Objects	\$385.00	\$710.00		\$1,095.00
Total 2100 Support Services – Students	\$460,418.21	\$763,441.86	\$296,900.19	\$1,552,094.25

LEA : 121394603 Northwestern Lehigh SD

Printed 11/18/2022 2:54:29 PM

General Fund (10)

2110 Supervision of Student Services	<u>Elementary</u>	<u>Secondary</u>	<u>Federal</u>	<u>Total</u>
100 <u>Personnel Services – Salaries</u>				
100 Personnel Services – Salaries	89,682.50	89,682.50		179,365.00
Total Personnel Services – Salaries	\$89,682.50	\$89,682.50		\$179,365.00
200 <u>Personnel Services – Employee Benefits</u>				
210 Group Insurance – Contracted Provider	14,531.22	14,531.22		29,062.44
220 Social Security Contributions	6,809.28	6,809.29		13,618.57
230 PSERS Retirement Contributions	31,335.04	31,335.05		62,670.09
299 All Other Employee Benefits	2,904.15	2,904.15		5,808.30
Total Personnel Services – Employee Benefits	\$55,579.69	\$55,579.71		\$111,159.40
600 <u>Supplies</u>				
610 General Supplies	6.78	6.79		13.57
650 Supplies & Fees – Technology Related	342.40	342.40		684.80
Total Supplies	\$349.18	\$349.19		\$698.37
Total 2110 Supervision of Student Services	\$145,611.37	\$145,611.40		\$291,222.77

LEA : 121394603 Northwestern Lehigh SD

Printed 11/18/2022 2:54:29 PM

General Fund (10)

2111 Supervision of Student Services – Head of Component	<u>Elementary</u>	<u>Secondary</u>	<u>Federal</u>	<u>Total</u>
100 <u>Personnel Services – Salaries</u>				
100 Personnel Services – Salaries	89,682.50	89,682.50		179,365.00
Total Personnel Services – Salaries	\$89,682.50	\$89,682.50		\$179,365.00
200 <u>Personnel Services – Employee Benefits</u>				
210 Group Insurance – Contracted Provider	14,531.22	14,531.22		29,062.44
220 Social Security Contributions	6,809.28	6,809.29		13,618.57
230 PSERS Retirement Contributions	31,335.04	31,335.05		62,670.09
299 All Other Employee Benefits	2,904.15	2,904.15		5,808.30
Total Personnel Services – Employee Benefits	\$55,579.69	\$55,579.71		\$111,159.40
600 <u>Supplies</u>				
610 General Supplies	6.78	6.79		13.57
650 Supplies & Fees – Technology Related	342.40	342.40		684.80
Total Supplies	\$349.18	\$349.19		\$698.37
Total 2111 Supervision of Student Services – Head of Component	\$145,611.37	\$145,611.40		\$291,222.77

LEA : 121394603 Northwestern Lehigh SD

Printed 11/18/2022 2:54:29 PM

General Fund (10)

2120 Guidance Services	Elementary	Secondary	Federal	Total
100 <u>Personnel Services – Salaries</u>				
100 Personnel Services – Salaries	167,582.35	325,723.79	182.84	493,488.98
Total Personnel Services – Salaries	\$167,582.35	\$325,723.79	\$182.84	\$493,488.98
200 <u>Personnel Services – Employee Benefits</u>				
210 Group Insurance – Contracted Provider	40,769.69	70,594.78		111,364.47
220 Social Security Contributions	12,394.34	28,160.53		40,554.87
230 PSERS Retirement Contributions	58,553.24	131,359.65		189,912.89
260 Workers' Compensation	2,965.04	2,965.03		5,930.07
Total Personnel Services – Employee Benefits	\$114,682.31	\$233,079.99		\$347,762.30
400 <u>Purchased Property Services</u>				
440 Rentals		123.11		123.11
Total Purchased Property Services		\$123.11		\$123.11
600 <u>Supplies</u>				
610 General Supplies		19,168.17		19,168.17
650 Supplies & Fees – Technology Related	700.48	6,029.13		6,729.61
Total Supplies	\$700.48	\$25,197.30		\$25,897.78
800 <u>Other Objects</u>				
810 Dues and Fees		325.00		325.00
Total Other Objects		\$325.00		\$325.00
Total 2120 Guidance Services	\$282,965.14	\$584,449.19	\$182.84	\$867,597.17

LEA : 121394603 Northwestern Lehigh SD

Printed 11/18/2022 2:54:29 PM

General Fund (10)

2140 Psychological Services	Elementary	Secondary	Federal	Total
100 <u>Personnel Services – Salaries</u>				
100 Personnel Services – Salaries	(2,392.64)	12,696.99	118,439.24	128,743.59
Total Personnel Services – Salaries	(\$2,392.64)	\$12,696.99	\$118,439.24	\$128,743.59
200 <u>Personnel Services – Employee Benefits</u>				
210 Group Insurance – Contracted Provider	535.14	(947.93)	21,259.07	20,846.28
220 Social Security Contributions	5,725.89	3,835.43		9,561.32
230 PSERS Retirement Contributions	27,233.91	17,057.35		44,291.26
Total Personnel Services – Employee Benefits	\$33,494.94	\$19,944.85	\$21,259.07	\$74,698.86
300 <u>Purchased Professional and Technical Services</u>				
330 Other Professional Services			82,058.50	82,058.50
Total Purchased Professional and Technical Services			\$82,058.50	\$82,058.50
500 <u>Other Purchased Services</u>				
550 Printing and Binding	56.52	56.53		113.05
580 Travel	81.22	81.23		162.45
Total Other Purchased Services	\$137.74	\$137.76		\$275.50
600 <u>Supplies</u>				
610 General Supplies	216.66	216.67		433.33
Total Supplies	\$216.66	\$216.67		\$433.33
800 <u>Other Objects</u>				
810 Dues and Fees	385.00	385.00		770.00
Total Other Objects	\$385.00	\$385.00		\$770.00
Total 2140 Psychological Services	\$31,841.70	\$33,381.27	\$221,756.81	\$286,979.78

LEA : 121394603 Northwestern Lehigh SD

Printed 11/18/2022 2:54:29 PM

General Fund (10)

2160 Social Work Services

	<u>Elementary</u>	<u>Secondary</u>	<u>Federal</u>	<u>Total</u>
100 <u>Personnel Services – Salaries</u>				
100 Personnel Services – Salaries			69,147.26	69,147.26
Total Personnel Services – Salaries			\$69,147.26	\$69,147.26
200 <u>Personnel Services – Employee Benefits</u>				
210 Group Insurance – Contracted Provider			5,813.28	7,457.94
220 Social Security Contributions				5,248.57
230 PSERS Retirement Contributions				24,160.05
Total Personnel Services – Employee Benefits			\$5,813.28	\$36,866.56
500 <u>Other Purchased Services</u>				
580 Travel				280.71
Total Other Purchased Services				\$280.71
Total 2160 Social Work Services			\$74,960.54	\$106,294.53

LEA : 121394603 Northwestern Lehigh SD

Printed 11/18/2022 2:54:29 PM

General Fund (10)

2200 Support Services – Instructional Staff	Elementary	Secondary	Federal	Total
100 Personnel Services – Salaries				
100 Personnel Services – Salaries	332,849.67	213,370.63	703.30	546,923.60
Total Personnel Services – Salaries	\$332,849.67	\$213,370.63	\$703.30	\$546,923.60
200 Personnel Services – Employee Benefits				
210 Group Insurance – Contracted Provider	52,620.24	48,387.85		101,008.09
220 Social Security Contributions	25,532.78	16,356.52		41,889.30
230 PSERS Retirement Contributions	117,562.62	76,299.29		193,861.91
240 Tuition Reimbursement	32,200.65	26,130.00		58,330.65
299 All Other Employee Benefits	2,573.34	3,940.15		6,513.49
Total Personnel Services – Employee Benefits	\$230,489.63	\$171,113.81		\$401,603.44
300 Purchased Professional and Technical Services				
329 Professional Educational Services – Other			18,101.30	18,101.30
360 Employee Training and Development Services			22,287.00	22,287.00
Total Purchased Professional and Technical Services			\$40,388.30	\$40,388.30
500 Other Purchased Services				
550 Printing and Binding	11.65	11.65		23.30
580 Travel	2,867.79	2,111.37		4,979.16
Total Other Purchased Services	\$2,879.44	\$2,123.02		\$5,002.46
600 Supplies				
610 General Supplies	854.82	5,232.29		6,087.11
640 Books and Periodicals	5,939.54	7,458.71	4,270.23	17,668.48
650 Supplies & Fees – Technology Related	9,576.59	21,883.31		31,459.90
Total Supplies	\$16,370.95	\$34,574.31	\$4,270.23	\$55,215.49
800 Other Objects				
810 Dues and Fees	407.50	407.50		815.00
Total Other Objects	\$407.50	\$407.50		\$815.00
Total 2200 Support Services – Instructional Staff	\$582,997.19	\$421,589.27	\$45,361.83	\$1,049,948.29

LEA : 121394603 Northwestern Lehigh SD

Printed 11/18/2022 2:54:29 PM

General Fund (10)

2240 Computer-Assisted Instruction Support Services	<u>Elementary</u>	<u>Secondary</u>	<u>Federal</u>	<u>Total</u>
100 <u>Personnel Services – Salaries</u>				
100 Personnel Services – Salaries	6,038.32	4,885.98		10,924.30
Total Personnel Services – Salaries	\$6,038.32	\$4,885.98		\$10,924.30
200 <u>Personnel Services – Employee Benefits</u>				
220 Social Security Contributions	461.96	373.79		835.75
230 PSERS Retirement Contributions	2,109.83	1,707.17		3,817.00
Total Personnel Services – Employee Benefits	\$2,571.79	\$2,080.96		\$4,652.75
Total 2240 Computer-Assisted Instruction Support Services	\$8,610.11	\$6,966.94		\$15,577.05

LEA : 121394603 Northwestern Lehigh SD

Printed 11/18/2022 2:54:29 PM

General Fund (10)

2250 School Library Services	<u>Elementary</u>	<u>Secondary</u>	<u>Federal</u>	<u>Total</u>
100 <u>Personnel Services – Salaries</u>				
100 Personnel Services – Salaries	187,334.39	104,071.40	596.00	292,001.79
Total Personnel Services – Salaries	\$187,334.39	\$104,071.40	\$596.00	\$292,001.79
200 <u>Personnel Services – Employee Benefits</u>				
210 Group Insurance – Contracted Provider	28,043.41	33,627.96		61,671.37
220 Social Security Contributions	13,930.84	7,670.35		21,601.19
230 PSERS Retirement Contributions	63,715.00	36,129.94		99,844.94
Total Personnel Services – Employee Benefits	\$105,689.25	\$77,428.25		\$183,117.50
600 <u>Supplies</u>				
610 General Supplies	612.32	4,989.78		5,602.10
640 Books and Periodicals	5,689.89	7,209.06		12,898.95
650 Supplies & Fees – Technology Related	7,778.21	20,084.93		27,863.14
Total Supplies	\$14,080.42	\$32,283.77		\$46,364.19
Total 2250 School Library Services	\$307,104.06	\$213,783.42	\$596.00	\$521,483.48

LEA : 121394603 Northwestern Lehigh SD

Printed 11/18/2022 2:54:29 PM

General Fund (10)

2260 Instruction and Curriculum Development Services	<u>Elementary</u>	<u>Secondary</u>	<u>Federal</u>	<u>Total</u>
100 <u>Personnel Services – Salaries</u>				
100 Personnel Services – Salaries	139,369.50	104,117.71	107.30	243,594.51
Total Personnel Services – Salaries	\$139,369.50	\$104,117.71	\$107.30	\$243,594.51
200 <u>Personnel Services – Employee Benefits</u>				
210 Group Insurance – Contracted Provider	24,576.83	14,759.89		39,336.72
220 Social Security Contributions	10,507.83	8,290.67		18,798.50
230 PSERS Retirement Contributions	48,765.28	38,358.93		87,124.21
299 All Other Employee Benefits	2,573.34	3,940.15		6,513.49
Total Personnel Services – Employee Benefits	\$86,423.28	\$65,349.64		\$151,772.92
500 <u>Other Purchased Services</u>				
550 Printing and Binding	11.65	11.65		23.30
580 Travel	97.42	97.43		194.85
Total Other Purchased Services	\$109.07	\$109.08		\$218.15
600 <u>Supplies</u>				
610 General Supplies	242.50	242.51		485.01
640 Books and Periodicals	14.75	14.75		29.50
650 Supplies & Fees – Technology Related	307.08	307.07		614.15
Total Supplies	\$564.33	\$564.33		\$1,128.66
800 <u>Other Objects</u>				
810 Dues and Fees	257.50	257.50		515.00
Total Other Objects	\$257.50	\$257.50		\$515.00
Total 2260 Instruction and Curriculum Development Services	\$226,723.68	\$170,398.26	\$107.30	\$397,229.24

LEA : 121394603 Northwestern Lehigh SD

Printed 11/18/2022 2:54:29 PM

General Fund (10)

2270 Instructional Staff Professional Development Services	<u>Elementary</u>	<u>Secondary</u>	<u>Federal</u>	<u>Total</u>
100 <u>Personnel Services – Salaries</u>				
100 Personnel Services – Salaries	107.46	295.54		403.00
Total Personnel Services – Salaries	\$107.46	\$295.54		\$403.00
200 <u>Personnel Services – Employee Benefits</u>				
220 Social Security Contributions	632.15	21.71		653.86
230 PSERS Retirement Contributions	2,972.51	103.25		3,075.76
240 Tuition Reimbursement	32,200.65	26,130.00		58,330.65
Total Personnel Services – Employee Benefits	\$35,805.31	\$26,254.96		\$62,060.27
300 <u>Purchased Professional and Technical Services</u>				
329 Professional Educational Services – Other			18,101.30	18,101.30
360 Employee Training and Development Services			22,287.00	22,287.00
Total Purchased Professional and Technical Services			\$40,388.30	\$40,388.30
500 <u>Other Purchased Services</u>				
580 Travel	2,770.37	2,013.94		4,784.31
Total Other Purchased Services	\$2,770.37	\$2,013.94		\$4,784.31
600 <u>Supplies</u>				
640 Books and Periodicals	234.90	234.90	4,270.23	4,740.03
650 Supplies & Fees – Technology Related	1,491.30	1,491.31		2,982.61
Total Supplies	\$1,726.20	\$1,726.21	\$4,270.23	\$7,722.64
800 <u>Other Objects</u>				
810 Dues and Fees	150.00	150.00		300.00
Total Other Objects	\$150.00	\$150.00		\$300.00
Total 2270 Instructional Staff Professional Development Services	\$40,559.34	\$30,440.65	\$44,658.53	\$115,658.52

LEA : 121394603 Northwestern Lehigh SD

Printed 11/18/2022 2:54:29 PM

General Fund (10)

2300 Support Services – Administration	Elementary	Secondary	Federal	Total
100 Personnel Services – Salaries				
100 Personnel Services – Salaries	527,982.44	608,636.85	2,137.16	1,544,467.60
Total Personnel Services – Salaries	\$527,982.44	\$608,636.85	\$2,137.16	\$1,544,467.60
200 Personnel Services – Employee Benefits				
210 Group Insurance – Contracted Provider	73,558.92	75,439.05		201,842.46
220 Social Security Contributions	39,538.05	45,835.48		114,697.01
230 PSERS Retirement Contributions	184,253.62	208,006.61		519,253.42
260 Workers' Compensation	5,751.86	5,751.87		11,503.73
299 All Other Employee Benefits	13,574.98	21,492.73		55,700.97
Total Personnel Services – Employee Benefits	\$316,677.43	\$356,525.74		\$902,997.59
300 Purchased Professional and Technical Services				
330 Other Professional Services				113,169.11
390 Other Purchased Professional and Technical Services				3,520.00
Total Purchased Professional and Technical Services				\$116,689.11
400 Purchased Property Services				
430 Repairs and Maintenance Services		420.00		420.00
440 Rentals	708.78	1,166.70		8,741.36
Total Purchased Property Services	\$708.78	\$1,586.70		\$9,161.36
500 Other Purchased Services				
520 Insurance – General				37,235.00
530 Communications				3,903.90
549 Other Advertising/Public Relations				1,462.19
550 Printing and Binding				6,029.49
580 Travel	605.28	926.38		1,749.10
Total Other Purchased Services	\$605.28	\$926.38		\$50,379.68
600 Supplies				
610 General Supplies	1,692.74	2,357.75		13,205.66
630 Food	351.39	105.30		4,020.75
640 Books and Periodicals	102.00	22.94		420.15
650 Supplies & Fees – Technology Related	1,684.81	1,307.61		15,839.62
Total Supplies	\$3,830.94	\$3,793.60		\$33,486.18
800 Other Objects				
810 Dues and Fees	2,635.28	2,194.72		27,471.87
820 Claims and Judgments Against the LEA				13,479.10
Total Other Objects	\$2,635.28	\$2,194.72		\$40,950.97
Total 2300 Support Services – Administration	\$852,440.15	\$973,663.99	\$2,137.16	\$2,698,132.49

LEA : 121394603 Northwestern Lehigh SD

Printed 11/18/2022 2:54:29 PM

General Fund (10)

2310 Board Services

Elementary Secondary Federal Total

500 <u>Other Purchased Services</u>				
520 Insurance – General				32,768.00
549 Other Advertising/Public Relations				1,462.19
550 Printing and Binding				528.22
Total Other Purchased Services				\$34,758.41
600 <u>Supplies</u>				
610 General Supplies				238.25
630 Food				245.18
650 Supplies & Fees – Technology Related				7,075.00
Total Supplies				\$7,558.43
800 <u>Other Objects</u>				
810 Dues and Fees				17,255.87
820 Claims and Judgments Against the LEA				13,479.10
Total Other Objects				\$30,734.97
Total 2310 Board Services				\$73,051.81

LEA : 121394603 Northwestern Lehigh SD

Printed 11/18/2022 2:54:29 PM

General Fund (10)

2330 Tax Assessment and Collection Services	<u>Elementary</u>	<u>Secondary</u>	<u>Federal</u>	<u>Total</u>
100 <u>Personnel Services – Salaries</u>				
100 Personnel Services – Salaries				30,730.01
Total Personnel Services – Salaries				\$30,730.01
200 <u>Personnel Services – Employee Benefits</u>				
220 Social Security Contributions				2,350.65
Total Personnel Services – Employee Benefits				\$2,350.65
500 <u>Other Purchased Services</u>				
520 Insurance – General				4,467.00
530 Communications				3,903.90
550 Printing and Binding				2,502.25
Total Other Purchased Services				\$10,873.15
600 <u>Supplies</u>				
650 Supplies & Fees – Technology Related				4,510.00
Total Supplies				\$4,510.00
Total 2330 Tax Assessment and Collection Services				\$48,463.81

LEA : 121394603 Northwestern Lehigh SD

Printed 11/18/2022 2:54:29 PM

General Fund (10)

2350 Legal and Accounting Services	<u>Elementary</u>	<u>Secondary</u>	<u>Federal</u>	<u>Total</u>
300 <u>Purchased Professional and Technical Services</u>				
330 Other Professional Services				113,169.11
Total Purchased Professional and Technical Services				\$113,169.11
Total 2350 Legal and Accounting Services				\$113,169.11

LEA : 121394603 Northwestern Lehigh SD

Printed 11/18/2022 2:54:29 PM

General Fund (10)

2360 Office of the Superintendent / Executive Director Services	<u>Elementary</u>	<u>Secondary</u>	<u>Federal</u>	<u>Total</u>
100 <u>Personnel Services – Salaries</u>				
100 Personnel Services – Salaries			202.64	375,183.78
Total Personnel Services – Salaries			\$202.64	\$375,183.78
200 <u>Personnel Services – Employee Benefits</u>				
210 Group Insurance – Contracted Provider				52,844.49
220 Social Security Contributions				26,972.83
230 PSERS Retirement Contributions				126,993.19
299 All Other Employee Benefits				20,633.26
Total Personnel Services – Employee Benefits				\$227,443.77
500 <u>Other Purchased Services</u>				
550 Printing and Binding				415.50
580 Travel				217.44
Total Other Purchased Services				\$632.94
600 <u>Supplies</u>				
610 General Supplies				4,746.32
630 Food				3,318.88
640 Books and Periodicals				295.21
650 Supplies & Fees – Technology Related				1,262.20
Total Supplies				\$9,622.61
800 <u>Other Objects</u>				
810 Dues and Fees				5,386.00
Total Other Objects				\$5,386.00
Total 2360 Office of the Superintendent / Executive Director Services			\$202.64	\$618,269.10

LEA : 121394603 Northwestern Lehigh SD

Printed 11/18/2022 2:54:29 PM

General Fund (10)

2380 Office of the Principal Services	Elementary	Secondary	Federal	Total
100 <u>Personnel Services – Salaries</u>				
100 Personnel Services – Salaries	527,982.44	608,636.85	1,934.52	1,138,553.81
Total Personnel Services – Salaries	\$527,982.44	\$608,636.85	\$1,934.52	\$1,138,553.81
200 <u>Personnel Services – Employee Benefits</u>				
210 Group Insurance – Contracted Provider	73,558.92	75,439.05		148,997.97
220 Social Security Contributions	39,538.05	45,835.48		85,373.53
230 PSERS Retirement Contributions	184,253.62	208,006.61		392,260.23
260 Workers' Compensation	5,751.86	5,751.87		11,503.73
299 All Other Employee Benefits	13,574.98	21,492.73		35,067.71
Total Personnel Services – Employee Benefits	\$316,677.43	\$356,525.74		\$673,203.17
400 <u>Purchased Property Services</u>				
430 Repairs and Maintenance Services		420.00		420.00
440 Rentals	708.78	1,166.70		1,875.48
Total Purchased Property Services	\$708.78	\$1,586.70		\$2,295.48
500 <u>Other Purchased Services</u>				
580 Travel	605.28	926.38		1,531.66
Total Other Purchased Services	\$605.28	\$926.38		\$1,531.66
600 <u>Supplies</u>				
610 General Supplies	1,692.74	2,357.75		4,050.49
630 Food	351.39	105.30		456.69
640 Books and Periodicals	102.00	22.94		124.94
650 Supplies & Fees – Technology Related	1,684.81	1,307.61		2,992.42
Total Supplies	\$3,830.94	\$3,793.60		\$7,624.54
800 <u>Other Objects</u>				
810 Dues and Fees	2,635.28	2,194.72		4,830.00
Total Other Objects	\$2,635.28	\$2,194.72		\$4,830.00
Total 2380 Office of the Principal Services	\$852,440.15	\$973,663.99	\$1,934.52	\$1,828,038.66

General Fund (10)

2390 Other Administration Services	<u>Elementary</u>	<u>Secondary</u>	<u>Federal</u>	<u>Total</u>
300 <u>Purchased Professional and Technical Services</u>				
390 Other Purchased Professional and Technical Services				3,520.00
Total Purchased Professional and Technical Services				\$3,520.00
400 <u>Purchased Property Services</u>				
440 Rentals				6,865.88
Total Purchased Property Services				\$6,865.88
500 <u>Other Purchased Services</u>				
550 Printing and Binding				2,583.52
Total Other Purchased Services				\$2,583.52
600 <u>Supplies</u>				
610 General Supplies				4,170.60
Total Supplies				\$4,170.60
Total 2390 Other Administration Services				\$17,140.00

LEA : 121394603 Northwestern Lehigh SD

Printed 11/18/2022 2:54:29 PM

General Fund (10)

2400 Support Services – Pupil Health	<u>Elementary</u>	<u>Secondary</u>	<u>Federal</u>	<u>Total</u>
100 <u>Personnel Services – Salaries</u>				
100 Personnel Services – Salaries				209,031.61
Total Personnel Services – Salaries				\$209,031.61
200 <u>Personnel Services – Employee Benefits</u>				
210 Group Insurance – Contracted Provider				37,786.40
220 Social Security Contributions				15,350.26
230 PSERS Retirement Contributions				69,317.34
Total Personnel Services – Employee Benefits				\$122,454.00
300 <u>Purchased Professional and Technical Services</u>				
330 Other Professional Services				387.50
Total Purchased Professional and Technical Services				\$387.50
600 <u>Supplies</u>				
610 General Supplies				6,104.60
Total Supplies				\$6,104.60
Total 2400 Support Services – Pupil Health				\$337,977.71

LEA : 121394603 Northwestern Lehigh SD

Printed 11/18/2022 2:54:29 PM

General Fund (10)

2420 Medical Services

Elementary Secondary Federal Total

100 <u>Personnel Services – Salaries</u>				
100 Personnel Services – Salaries				209,031.61
Total Personnel Services – Salaries				\$209,031.61
200 <u>Personnel Services – Employee Benefits</u>				
210 Group Insurance – Contracted Provider				37,786.40
220 Social Security Contributions				15,350.26
230 PSERS Retirement Contributions				69,317.34
Total Personnel Services – Employee Benefits				\$122,454.00
300 <u>Purchased Professional and Technical Services</u>				
330 Other Professional Services				262.50
Total Purchased Professional and Technical Services				\$262.50
600 <u>Supplies</u>				
610 General Supplies				6,104.60
Total Supplies				\$6,104.60
Total 2420 Medical Services				\$337,852.71

LEA : 121394603 Northwestern Lehigh SD

Printed 11/18/2022 2:54:29 PM

General Fund (10)

2430 Dental Services

	<u>Elementary</u>	<u>Secondary</u>	<u>Federal</u>	<u>Total</u>
300 <u>Purchased Professional and Technical Services</u>				
330 Other Professional Services				125.00
Total Purchased Professional and Technical Services				\$125.00
Total 2430 Dental Services				\$125.00

LEA : 121394603 Northwestern Lehigh SD

Printed 11/18/2022 2:54:29 PM

General Fund (10)

2500 Support Services – Business	Elementary	Secondary	Federal	Total
100 <u>Personnel Services – Salaries</u>				
100 Personnel Services – Salaries			883.72	434,842.04
Total Personnel Services – Salaries			\$883.72	\$434,842.04
200 <u>Personnel Services – Employee Benefits</u>				
210 Group Insurance – Contracted Provider				47,507.10
220 Social Security Contributions				32,879.35
230 PSERS Retirement Contributions				142,877.82
Total Personnel Services – Employee Benefits				\$223,264.27
300 <u>Purchased Professional and Technical Services</u>				
330 Other Professional Services				31,950.00
340 Technical Services				2,968.00
Total Purchased Professional and Technical Services				\$34,918.00
400 <u>Purchased Property Services</u>				
410 Cleaning Services				600.00
440 Rentals				2,851.75
Total Purchased Property Services				\$3,451.75
500 <u>Other Purchased Services</u>				
530 Communications				7,024.33
550 Printing and Binding				971.80
580 Travel				381.33
Total Other Purchased Services				\$8,377.46
600 <u>Supplies</u>				
610 General Supplies				2,086.19
650 Supplies & Fees – Technology Related				39,477.82
Total Supplies				\$41,564.01
800 <u>Other Objects</u>				
810 Dues and Fees				13,744.59
Total Other Objects				\$13,744.59
Total 2500 Support Services – Business			\$883.72	\$760,162.12

LEA : 121394603 Northwestern Lehigh SD

Printed 11/18/2022 2:54:29 PM

General Fund (10)				
2510 Fiscal Services				
	<u>Elementary</u>	<u>Secondary</u>	<u>Federal</u>	<u>Total</u>
100 <u>Personnel Services – Salaries</u>				
100 Personnel Services – Salaries			883.72	434,842.04
Total Personnel Services – Salaries			\$883.72	\$434,842.04
200 <u>Personnel Services – Employee Benefits</u>				
210 Group Insurance – Contracted Provider				47,507.10
220 Social Security Contributions				32,879.35
230 PSERS Retirement Contributions				142,877.82
Total Personnel Services – Employee Benefits				\$223,264.27
300 <u>Purchased Professional and Technical Services</u>				
330 Other Professional Services				31,950.00
340 Technical Services				2,968.00
Total Purchased Professional and Technical Services				\$34,918.00
400 <u>Purchased Property Services</u>				
410 Cleaning Services				600.00
440 Rentals				2,851.75
Total Purchased Property Services				\$3,451.75
500 <u>Other Purchased Services</u>				
530 Communications				7,024.33
550 Printing and Binding				971.80
580 Travel				381.33
Total Other Purchased Services				\$8,377.46
600 <u>Supplies</u>				
610 General Supplies				2,086.19
650 Supplies & Fees – Technology Related				39,477.82
Total Supplies				\$41,564.01
800 <u>Other Objects</u>				
810 Dues and Fees				13,744.59
Total Other Objects				\$13,744.59
Total 2510 Fiscal Services			\$883.72	\$760,162.12

LEA : 121394603 Northwestern Lehigh SD

Printed 11/18/2022 2:54:29 PM

General Fund (10)

2511 Supervision of Fiscal Services - Head of Component	<u>Elementary</u>	<u>Secondary</u>	<u>Federal</u>	<u>Total</u>
100 <u>Personnel Services – Salaries</u>				
100 Personnel Services – Salaries			303.92	266,171.45
Total Personnel Services – Salaries			\$303.92	\$266,171.45
200 <u>Personnel Services – Employee Benefits</u>				
210 Group Insurance – Contracted Provider				32,619.15
220 Social Security Contributions				20,095.05
230 PSERS Retirement Contributions				85,516.54
Total Personnel Services – Employee Benefits				\$138,230.74
400 <u>Purchased Property Services</u>				
440 Rentals				691.75
Total Purchased Property Services				\$691.75
500 <u>Other Purchased Services</u>				
550 Printing and Binding				191.48
580 Travel				381.33
Total Other Purchased Services				\$572.81
600 <u>Supplies</u>				
610 General Supplies				1,151.31
650 Supplies & Fees – Technology Related				14,687.33
Total Supplies				\$15,838.64
800 <u>Other Objects</u>				
810 Dues and Fees				650.00
Total Other Objects				\$650.00
Total 2511 Supervision of Fiscal Services - Head of Component			\$303.92	\$422,155.39

LEA : 121394603 Northwestern Lehigh SD

Printed 11/18/2022 2:54:29 PM

General Fund (10)				
2519 Other Fiscal Services	<u>Elementary</u>	<u>Secondary</u>	<u>Federal</u>	<u>Total</u>
100 <u>Personnel Services – Salaries</u>				
100 Personnel Services – Salaries			579.80	168,670.59
Total Personnel Services – Salaries			\$579.80	\$168,670.59
200 <u>Personnel Services – Employee Benefits</u>				
210 Group Insurance – Contracted Provider				14,887.95
220 Social Security Contributions				12,784.30
230 PSERS Retirement Contributions				57,361.28
Total Personnel Services – Employee Benefits				\$85,033.53
300 <u>Purchased Professional and Technical Services</u>				
330 Other Professional Services				31,950.00
340 Technical Services				2,968.00
Total Purchased Professional and Technical Services				\$34,918.00
400 <u>Purchased Property Services</u>				
410 Cleaning Services				600.00
440 Rentals				2,160.00
Total Purchased Property Services				\$2,760.00
500 <u>Other Purchased Services</u>				
530 Communications				7,024.33
550 Printing and Binding				780.32
Total Other Purchased Services				\$7,804.65
600 <u>Supplies</u>				
610 General Supplies				934.88
650 Supplies & Fees – Technology Related				24,790.49
Total Supplies				\$25,725.37
800 <u>Other Objects</u>				
810 Dues and Fees				13,094.59
Total Other Objects				\$13,094.59
Total 2519 Other Fiscal Services			\$579.80	\$338,006.73

LEA : 121394603 Northwestern Lehigh SD

Printed 11/18/2022 2:54:29 PM

General Fund (10)

2600 Operation and Maintenance of Plant Services	Elementary	Secondary	Federal	Total
100 <u>Personnel Services – Salaries</u>				
100 Personnel Services – Salaries			4,963.24	1,682,678.36
Total Personnel Services – Salaries			\$4,963.24	\$1,682,678.36
200 <u>Personnel Services – Employee Benefits</u>				
210 Group Insurance – Contracted Provider				137,962.13
220 Social Security Contributions				127,919.39
230 PSERS Retirement Contributions				553,780.60
260 Workers' Compensation				11,388.76
299 All Other Employee Benefits				5,289.57
Total Personnel Services – Employee Benefits				\$836,340.45
300 <u>Purchased Professional and Technical Services</u>				
330 Other Professional Services				43,533.29
Total Purchased Professional and Technical Services				\$43,533.29
400 <u>Purchased Property Services</u>				
410 Cleaning Services				33,555.55
420 Utility Services				79,860.01
430 Repairs and Maintenance Services				257,443.43
440 Rentals				10,651.89
460 Extermination Services				6,909.60
490 Other Purchased Property Services				56,153.54
Total Purchased Property Services				\$444,574.02
500 <u>Other Purchased Services</u>				
523 General Property and Liability Insurance				135,792.84
529 Other Insurance				10,542.00
530 Communications				93,232.26
Total Other Purchased Services				\$239,567.10
600 <u>Supplies</u>				
610 General Supplies	222,485.18	235,034.44		457,519.62
620 Energy				570,526.72
630 Food				222.50
640 Books and Periodicals				300.00
650 Supplies & Fees – Technology Related				45,889.58
Total Supplies	\$222,485.18	\$235,034.44		\$1,074,458.42
700 <u>Property</u>				
752 Capital Equipment – Original and Additional				10,034.00
762 Capitalized Equipment - Replacement				72,633.00
Total Property				\$82,667.00
800 <u>Other Objects</u>				
810 Dues and Fees				4,160.00
Total Other Objects				\$4,160.00
Total 2600 Operation and Maintenance of Plant Services	\$222,485.18	\$235,034.44	\$4,963.24	\$4,407,978.64

LEA : 121394603 Northwestern Lehigh SD

Printed 11/18/2022 2:54:29 PM

General Fund (10)

2610 Supervision of Operation and Maintenance of Plant Services	<u>Elementary</u>	<u>Secondary</u>	<u>Federal</u>	<u>Total</u>
100 <u>Personnel Services – Salaries</u>				
100 Personnel Services – Salaries			146.28	107,432.08
Total Personnel Services – Salaries			\$146.28	\$107,432.08
200 <u>Personnel Services – Employee Benefits</u>				
210 Group Insurance – Contracted Provider				18,814.95
220 Social Security Contributions				8,241.89
230 PSERS Retirement Contributions				35,901.45
299 All Other Employee Benefits				3,789.57
Total Personnel Services – Employee Benefits				\$66,747.86
400 <u>Purchased Property Services</u>				
430 Repairs and Maintenance Services				1,360.00
440 Rentals				67.45
Total Purchased Property Services				\$1,427.45
600 <u>Supplies</u>				
610 General Supplies	2,578.73	2,578.73		5,157.46
650 Supplies & Fees – Technology Related				6,044.39
Total Supplies	\$2,578.73	\$2,578.73		\$11,201.85
800 <u>Other Objects</u>				
810 Dues and Fees				355.00
Total Other Objects				\$355.00
Total 2610 Supervision of Operation and Maintenance of Plant Services	\$2,578.73	\$2,578.73	\$146.28	\$187,164.24

LEA : 121394603 Northwestern Lehigh SD

Printed 11/18/2022 2:54:29 PM

General Fund (10)

2611 Supervision of Operation and Maintenance of Plant Services – Head of Component	<u>Elementary</u>	<u>Secondary</u>	<u>Federal</u>	<u>Total</u>
100 <u>Personnel Services – Salaries</u>				
100 Personnel Services – Salaries			146.28	107,432.08
Total Personnel Services – Salaries			\$146.28	\$107,432.08
200 <u>Personnel Services – Employee Benefits</u>				
210 Group Insurance – Contracted Provider				18,814.95
220 Social Security Contributions				8,241.89
230 PSERS Retirement Contributions				35,901.45
299 All Other Employee Benefits				3,789.57
Total Personnel Services – Employee Benefits				\$66,747.86
400 <u>Purchased Property Services</u>				
430 Repairs and Maintenance Services				1,360.00
440 Rentals				67.45
Total Purchased Property Services				\$1,427.45
600 <u>Supplies</u>				
610 General Supplies	2,578.73	2,578.73		5,157.46
650 Supplies & Fees – Technology Related				6,044.39
Total Supplies	\$2,578.73	\$2,578.73		\$11,201.85
800 <u>Other Objects</u>				
810 Dues and Fees				355.00
Total Other Objects				\$355.00
Total 2611 Supervision of Operation and Maintenance of Plant Services – Head of Component	\$2,578.73	\$2,578.73	\$146.28	\$187,164.24

LEA : 121394603 Northwestern Lehigh SD

Printed 11/18/2022 2:54:29 PM

General Fund (10)

2620 Operation of Buildings Services	Elementary	Secondary	Federal	Total
100 <u>Personnel Services – Salaries</u>				
100 Personnel Services – Salaries			2,714.54	1,160,360.84
Total Personnel Services – Salaries			\$2,714.54	\$1,160,360.84
200 <u>Personnel Services – Employee Benefits</u>				
210 Group Insurance – Contracted Provider				92,088.66
220 Social Security Contributions				88,154.49
230 PSERS Retirement Contributions				380,348.07
260 Workers' Compensation				11,388.76
Total Personnel Services – Employee Benefits				\$571,979.98
300 <u>Purchased Professional and Technical Services</u>				
330 Other Professional Services				43,533.29
Total Purchased Professional and Technical Services				\$43,533.29
400 <u>Purchased Property Services</u>				
410 Cleaning Services				33,555.55
420 Utility Services				79,860.01
430 Repairs and Maintenance Services				202,820.04
440 Rentals				1,749.13
460 Extermination Services				6,909.60
490 Other Purchased Property Services				56,153.54
Total Purchased Property Services				\$381,047.87
500 <u>Other Purchased Services</u>				
523 General Property and Liability Insurance				135,792.84
529 Other Insurance				10,542.00
530 Communications				93,232.26
Total Other Purchased Services				\$239,567.10
600 <u>Supplies</u>				
610 General Supplies	172,407.47	181,927.59		354,335.06
620 Energy				570,526.72
650 Supplies & Fees – Technology Related				16,802.19
Total Supplies	\$172,407.47	\$181,927.59		\$941,663.97
700 <u>Property</u>				
752 Capital Equipment – Original and Additional				10,034.00
Total Property				\$10,034.00
800 <u>Other Objects</u>				
810 Dues and Fees				3,510.00
Total Other Objects				\$3,510.00
Total 2620 Operation of Buildings Services	\$172,407.47	\$181,927.59	\$2,714.54	\$3,351,697.05

LEA : 121394603 Northwestern Lehigh SD

Printed 11/18/2022 2:54:29 PM

General Fund (10)

2630 Care and Upkeep of Grounds Services	<u>Elementary</u>	<u>Secondary</u>	<u>Federal</u>	<u>Total</u>
100 <u>Personnel Services – Salaries</u>				
100 Personnel Services – Salaries			684.06	232,445.72
Total Personnel Services – Salaries			\$684.06	\$232,445.72
200 <u>Personnel Services – Employee Benefits</u>				
210 Group Insurance – Contracted Provider				26,531.48
220 Social Security Contributions				17,530.86
230 PSERS Retirement Contributions				78,439.70
Total Personnel Services – Employee Benefits				\$122,502.04
400 <u>Purchased Property Services</u>				
430 Repairs and Maintenance Services				53,263.39
440 Rentals				8,835.31
Total Purchased Property Services				\$62,098.70
600 <u>Supplies</u>				
610 General Supplies	39,215.14	42,244.28		81,459.42
Total Supplies	\$39,215.14	\$42,244.28		\$81,459.42
700 <u>Property</u>				
762 Capitalized Equipment - Replacement				72,633.00
Total Property				\$72,633.00
800 <u>Other Objects</u>				
810 Dues and Fees				170.00
Total Other Objects				\$170.00
Total 2630 Care and Upkeep of Grounds Services	\$39,215.14	\$42,244.28	\$684.06	\$571,308.88

LEA : 121394603 Northwestern Lehigh SD

Printed 11/18/2022 2:54:29 PM

General Fund (10)

2660 Safety and Security Services	Elementary	Secondary	Federal	Total
100 <u>Personnel Services – Salaries</u>				
100 Personnel Services – Salaries			1,418.36	182,439.72
Total Personnel Services – Salaries			\$1,418.36	\$182,439.72
200 <u>Personnel Services – Employee Benefits</u>				
210 Group Insurance – Contracted Provider				527.04
220 Social Security Contributions				13,992.15
230 PSERS Retirement Contributions				59,091.38
299 All Other Employee Benefits				1,500.00
Total Personnel Services – Employee Benefits				\$75,110.57
600 <u>Supplies</u>				
610 General Supplies	8,283.84	8,283.84		16,567.68
630 Food				222.50
640 Books and Periodicals				300.00
650 Supplies & Fees – Technology Related				23,043.00
Total Supplies	\$8,283.84	\$8,283.84		\$40,133.18
800 <u>Other Objects</u>				
810 Dues and Fees				125.00
Total Other Objects				\$125.00
Total 2660 Safety and Security Services	\$8,283.84	\$8,283.84	\$1,418.36	\$297,808.47

LEA : 121394603 Northwestern Lehigh SD

Printed 11/18/2022 2:54:29 PM

General Fund (10)

2700 Student Transportation Services	Elementary	Secondary	Federal	Total
100 <u>Personnel Services – Salaries</u>				
100 Personnel Services – Salaries			9,991.37	1,316,038.76
Total Personnel Services – Salaries			\$9,991.37	\$1,316,038.76
200 <u>Personnel Services – Employee Benefits</u>				
210 Group Insurance – Contracted Provider				34,570.77
220 Social Security Contributions				100,597.90
230 PSERS Retirement Contributions				431,577.99
260 Workers' Compensation				11,505.02
299 All Other Employee Benefits				3,789.57
Total Personnel Services – Employee Benefits				\$582,041.25
300 <u>Purchased Professional and Technical Services</u>				
330 Other Professional Services				6,102.58
Total Purchased Professional and Technical Services				\$6,102.58
400 <u>Purchased Property Services</u>				
410 Cleaning Services				3,966.59
430 Repairs and Maintenance Services				69,142.62
440 Rentals				152.21
Total Purchased Property Services				\$73,261.42
500 <u>Other Purchased Services</u>				
513 Contracted Carriers				83,355.70
516 Student Transportation Services From the IU				34,324.04
522 Automotive Liability Insurance				53,654.00
530 Communications				22.81
580 Travel				345.15
Total Other Purchased Services				\$171,701.70
600 <u>Supplies</u>				
610 General Supplies				132,727.36
620 Energy				228,273.76
650 Supplies & Fees – Technology Related				58,054.07
Total Supplies				\$419,055.19
700 <u>Property</u>				
762 Capitalized Equipment - Replacement				91,772.00
Total Property				\$91,772.00
800 <u>Other Objects</u>				
810 Dues and Fees				1,992.62
Total Other Objects				\$1,992.62
Total 2700 Student Transportation Services			\$9,991.37	\$2,661,965.52

LEA : 121394603 Northwestern Lehigh SD

Printed 11/18/2022 2:54:29 PM

General Fund (10)				
2710 Supervision of Student Transportation Services	<u>Elementary</u>	<u>Secondary</u>	<u>Federal</u>	<u>Total</u>
100 <u>Personnel Services – Salaries</u>				
100 Personnel Services – Salaries			614.32	179,553.89
Total Personnel Services – Salaries			\$614.32	\$179,553.89
200 <u>Personnel Services – Employee Benefits</u>				
210 Group Insurance – Contracted Provider				17,052.41
220 Social Security Contributions				13,807.96
230 PSERS Retirement Contributions				60,361.19
299 All Other Employee Benefits				3,789.57
Total Personnel Services – Employee Benefits				\$95,011.13
400 <u>Purchased Property Services</u>				
430 Repairs and Maintenance Services				1,360.00
440 Rentals				114.75
Total Purchased Property Services				\$1,474.75
500 <u>Other Purchased Services</u>				
580 Travel				327.60
Total Other Purchased Services				\$327.60
600 <u>Supplies</u>				
610 General Supplies				9,658.44
650 Supplies & Fees – Technology Related				37,113.30
Total Supplies				\$46,771.74
800 <u>Other Objects</u>				
810 Dues and Fees				750.00
Total Other Objects				\$750.00
Total 2710 Supervision of Student Transportation Services			\$614.32	\$323,889.11

LEA : 121394603 Northwestern Lehigh SD

Printed 11/18/2022 2:54:29 PM

General Fund (10)				
2711 Supervision of Student Transportation Services – Head of Component	Elementary	Secondary	Federal	Total
100 Personnel Services – Salaries				
100 Personnel Services – Salaries			614.32	179,553.89
Total Personnel Services – Salaries			\$614.32	\$179,553.89
200 Personnel Services – Employee Benefits				
210 Group Insurance – Contracted Provider				17,052.41
220 Social Security Contributions				13,807.96
230 PSERS Retirement Contributions				60,361.19
299 All Other Employee Benefits				3,789.57
Total Personnel Services – Employee Benefits				\$95,011.13
400 Purchased Property Services				
430 Repairs and Maintenance Services				1,360.00
440 Rentals				114.75
Total Purchased Property Services				\$1,474.75
500 Other Purchased Services				
580 Travel				327.60
Total Other Purchased Services				\$327.60
600 Supplies				
610 General Supplies				9,658.44
650 Supplies & Fees – Technology Related				37,113.30
Total Supplies				\$46,771.74
800 Other Objects				
810 Dues and Fees				750.00
Total Other Objects				\$750.00
Total 2711 Supervision of Student Transportation Services – Head of Component			\$614.32	\$323,889.11

LEA : 121394603 Northwestern Lehigh SD

Printed 11/18/2022 2:54:29 PM

General Fund (10)

2720 Vehicle Operation Services	Elementary	Secondary	Federal	Total
100 <u>Personnel Services – Salaries</u>				
100 Personnel Services – Salaries			8,975.05	895,545.82
Total Personnel Services – Salaries			\$8,975.05	\$895,545.82
200 <u>Personnel Services – Employee Benefits</u>				
210 Group Insurance – Contracted Provider				607.90
220 Social Security Contributions				68,474.10
230 PSERS Retirement Contributions				287,493.25
260 Workers' Compensation				10,641.65
Total Personnel Services – Employee Benefits				\$367,216.90
300 <u>Purchased Professional and Technical Services</u>				
330 Other Professional Services				3,727.74
Total Purchased Professional and Technical Services				\$3,727.74
400 <u>Purchased Property Services</u>				
410 Cleaning Services				262.11
Total Purchased Property Services				\$262.11
500 <u>Other Purchased Services</u>				
516 Student Transportation Services From the IU				34,324.04
522 Automotive Liability Insurance				40,449.75
580 Travel				17.55
Total Other Purchased Services				\$74,791.34
600 <u>Supplies</u>				
650 Supplies & Fees – Technology Related				2,400.37
Total Supplies				\$2,400.37
700 <u>Property</u>				
762 Capitalized Equipment - Replacement				91,772.00
Total Property				\$91,772.00
800 <u>Other Objects</u>				
810 Dues and Fees				1,242.62
Total Other Objects				\$1,242.62
Total 2720 Vehicle Operation Services			\$8,975.05	\$1,436,958.90

LEA : 121394603 Northwestern Lehigh SD

Printed 11/18/2022 2:54:29 PM

General Fund (10)

2740 Vehicle Servicing and Maintenance Services	<u>Elementary</u>	<u>Secondary</u>	<u>Federal</u>	<u>Total</u>
100 <u>Personnel Services – Salaries</u>				
100 Personnel Services – Salaries			402.00	135,651.20
Total Personnel Services – Salaries			\$402.00	\$135,651.20
200 <u>Personnel Services – Employee Benefits</u>				
210 Group Insurance – Contracted Provider				16,750.86
220 Social Security Contributions				10,261.31
230 PSERS Retirement Contributions				46,935.98
Total Personnel Services – Employee Benefits				\$73,948.15
300 <u>Purchased Professional and Technical Services</u>				
330 Other Professional Services				873.00
Total Purchased Professional and Technical Services				\$873.00
400 <u>Purchased Property Services</u>				
410 Cleaning Services				3,704.48
430 Repairs and Maintenance Services				50,766.62
Total Purchased Property Services				\$54,471.10
500 <u>Other Purchased Services</u>				
530 Communications				22.81
Total Other Purchased Services				\$22.81
600 <u>Supplies</u>				
610 General Supplies				90,404.72
620 Energy				172,095.59
650 Supplies & Fees – Technology Related				18,540.40
Total Supplies				\$281,040.71
Total 2740 Vehicle Servicing and Maintenance Services			\$402.00	\$546,006.97

LEA : 121394603 Northwestern Lehigh SD

Printed 11/18/2022 2:54:29 PM

General Fund (10)

2750 Nonpublic Transportation	<u>Elementary</u>	<u>Secondary</u>	<u>Federal</u>	<u>Total</u>
100 <u>Personnel Services – Salaries</u>				
100 Personnel Services – Salaries				105,287.85
Total Personnel Services – Salaries				\$105,287.85
200 <u>Personnel Services – Employee Benefits</u>				
210 Group Insurance – Contracted Provider				159.60
220 Social Security Contributions				8,054.53
230 PSERS Retirement Contributions				36,787.57
260 Workers' Compensation				863.37
Total Personnel Services – Employee Benefits				\$45,865.07
300 <u>Purchased Professional and Technical Services</u>				
330 Other Professional Services				1,501.84
Total Purchased Professional and Technical Services				\$1,501.84
400 <u>Purchased Property Services</u>				
430 Repairs and Maintenance Services				17,016.00
440 Rentals				37.46
Total Purchased Property Services				\$17,053.46
500 <u>Other Purchased Services</u>				
513 Contracted Carriers				83,355.70
522 Automotive Liability Insurance				13,204.25
Total Other Purchased Services				\$96,559.95
600 <u>Supplies</u>				
610 General Supplies				32,664.20
620 Energy				56,178.17
Total Supplies				\$88,842.37
Total 2750 Nonpublic Transportation				\$355,110.54

LEA : 121394603 Northwestern Lehigh SD

Printed 11/18/2022 2:54:29 PM

General Fund (10)

2800 Support Services – Central	<u>Elementary</u>	<u>Secondary</u>	<u>Federal</u>	<u>Total</u>
100 <u>Personnel Services – Salaries</u>				
100 Personnel Services – Salaries			160.95	450,575.75
Total Personnel Services – Salaries			\$160.95	\$450,575.75
200 <u>Personnel Services – Employee Benefits</u>				
210 Group Insurance – Contracted Provider				42,372.83
220 Social Security Contributions				34,409.74
230 PSERS Retirement Contributions				153,467.82
240 Tuition Reimbursement				41,585.82
299 All Other Employee Benefits				7,805.37
Total Personnel Services – Employee Benefits				\$279,641.58
300 <u>Purchased Professional and Technical Services</u>				
330 Other Professional Services				559.00
340 Technical Services				5,962.50
360 Employee Training and Development Services			2,167.96	8,905.96
390 Other Purchased Professional and Technical Services				200.00
Total Purchased Professional and Technical Services			\$2,167.96	\$15,627.46
500 <u>Other Purchased Services</u>				
530 Communications				30.25
549 Other Advertising/Public Relations				23,564.66
550 Printing and Binding				226.84
580 Travel				3,023.48
Total Other Purchased Services				\$26,845.23
600 <u>Supplies</u>				
610 General Supplies				3,451.66
630 Food				1,434.89
640 Books and Periodicals				570.00
650 Supplies & Fees – Technology Related				141,466.96
Total Supplies				\$146,923.51
800 <u>Other Objects</u>				
810 Dues and Fees				2,183.25
Total Other Objects				\$2,183.25
Total 2800 Support Services – Central			\$2,328.91	\$921,796.78

LEA : 121394603 Northwestern Lehigh SD

Printed 11/18/2022 2:54:29 PM

General Fund (10)

2810 Planning, Research, Development and Evaluation Services	<u>Elementary</u>	<u>Secondary</u>	<u>Federal</u>	<u>Total</u>
100 <u>Personnel Services – Salaries</u>				
100 Personnel Services – Salaries				253,778.72
Total Personnel Services – Salaries				\$253,778.72
200 <u>Personnel Services – Employee Benefits</u>				
210 Group Insurance – Contracted Provider				32,841.31
220 Social Security Contributions				19,208.68
230 PSERS Retirement Contributions				85,999.41
Total Personnel Services – Employee Benefits				\$138,049.40
300 <u>Purchased Professional and Technical Services</u>				
330 Other Professional Services				559.00
340 Technical Services				5,962.50
Total Purchased Professional and Technical Services				\$6,521.50
500 <u>Other Purchased Services</u>				
580 Travel				305.60
Total Other Purchased Services				\$305.60
600 <u>Supplies</u>				
650 Supplies & Fees – Technology Related				372.00
Total Supplies				\$372.00
Total 2810 Planning, Research, Development and Evaluation Services				\$399,027.22

LEA : 121394603 Northwestern Lehigh SD

Printed 11/18/2022 2:54:29 PM

General Fund (10)

2820 Information Services

<u>Elementary</u>	<u>Secondary</u>	<u>Federal</u>	<u>Total</u>
-------------------	------------------	----------------	--------------

600 <u>Supplies</u>				
650 Supplies & Fees – Technology Related				117,641.09

Total Supplies				\$117,641.09
Total 2820 Information Services				\$117,641.09

LEA : 121394603 Northwestern Lehigh SD

Printed 11/18/2022 2:54:29 PM

General Fund (10)

2829 Other Information Services	<u>Elementary</u>	<u>Secondary</u>	<u>Federal</u>	<u>Total</u>
600 <u>Supplies</u>				
650 Supplies & Fees – Technology Related				117,641.09
Total Supplies				\$117,641.09
Total 2829 Other Information Services				\$117,641.09

LEA : 121394603 Northwestern Lehigh SD

Printed 11/18/2022 2:54:29 PM

General Fund (10)

2830 Staff Services

	<u>Elementary</u>	<u>Secondary</u>	<u>Federal</u>	<u>Total</u>
100 <u>Personnel Services – Salaries</u>				
100 Personnel Services – Salaries			160.95	196,797.03
Total Personnel Services – Salaries			\$160.95	\$196,797.03
200 <u>Personnel Services – Employee Benefits</u>				
210 Group Insurance – Contracted Provider				9,531.52
220 Social Security Contributions				15,201.06
230 PSERS Retirement Contributions				67,468.41
240 Tuition Reimbursement				41,585.82
299 All Other Employee Benefits				7,805.37
Total Personnel Services – Employee Benefits				\$141,592.18
300 <u>Purchased Professional and Technical Services</u>				
360 Employee Training and Development Services			2,167.96	8,905.96
390 Other Purchased Professional and Technical Services				200.00
Total Purchased Professional and Technical Services			\$2,167.96	\$9,105.96
500 <u>Other Purchased Services</u>				
530 Communications				30.25
549 Other Advertising/Public Relations				23,564.66
550 Printing and Binding				226.84
580 Travel				2,717.88
Total Other Purchased Services				\$26,539.63
600 <u>Supplies</u>				
610 General Supplies				3,451.66
630 Food				1,434.89
640 Books and Periodicals				570.00
650 Supplies & Fees – Technology Related				23,453.87
Total Supplies				\$28,910.42
800 <u>Other Objects</u>				
810 Dues and Fees				2,183.25
Total Other Objects				\$2,183.25
Total 2830 Staff Services			\$2,328.91	\$405,128.47

LEA : 121394603 Northwestern Lehigh SD

Printed 11/18/2022 2:54:29 PM

General Fund (10)

2832 Recruitment and Placement Services	<u>Elementary</u>	<u>Secondary</u>	<u>Federal</u>	<u>Total</u>
100 <u>Personnel Services – Salaries</u>				
100 Personnel Services – Salaries			160.95	196,797.03
Total Personnel Services – Salaries			\$160.95	\$196,797.03
200 <u>Personnel Services – Employee Benefits</u>				
210 Group Insurance – Contracted Provider				9,531.52
220 Social Security Contributions				15,201.06
230 PSERS Retirement Contributions				67,468.41
299 All Other Employee Benefits				7,805.37
Total Personnel Services – Employee Benefits				\$100,006.36
500 <u>Other Purchased Services</u>				
530 Communications				30.25
549 Other Advertising/Public Relations				23,564.66
550 Printing and Binding				226.84
Total Other Purchased Services				\$23,821.75
600 <u>Supplies</u>				
610 General Supplies				3,451.66
630 Food				1,434.89
640 Books and Periodicals				570.00
650 Supplies & Fees – Technology Related				23,453.87
Total Supplies				\$28,910.42
800 <u>Other Objects</u>				
810 Dues and Fees				2,183.25
Total Other Objects				\$2,183.25
Total 2832 Recruitment and Placement Services			\$160.95	\$351,718.81

LEA : 121394603 Northwestern Lehigh SD

Printed 11/18/2022 2:54:29 PM

General Fund (10)

2834 Staff Development Services – Non-Instructional, Certified Staff Only	<u>Elementary</u>	<u>Secondary</u>	<u>Federal</u>	<u>Total</u>
200 <u>Personnel Services – Employee Benefits</u>				
240 Tuition Reimbursement				29,117.82
Total Personnel Services – Employee Benefits				\$29,117.82
300 <u>Purchased Professional and Technical Services</u>				
360 Employee Training and Development Services			2,167.96	3,124.96
Total Purchased Professional and Technical Services			\$2,167.96	\$3,124.96
500 <u>Other Purchased Services</u>				
580 Travel				1,646.51
Total Other Purchased Services				\$1,646.51
Total 2834 Staff Development Services – Non-Instructional, Certified Staff Only			\$2,167.96	\$33,889.29

LEA : 121394603 Northwestern Lehigh SD

Printed 11/18/2022 2:54:29 PM

General Fund (10)

2836 Staff Development Services – Non-Instructional, Non-Certified Staff Only	<u>Elementary</u>	<u>Secondary</u>	<u>Federal</u>	<u>Total</u>
200 <u>Personnel Services – Employee Benefits</u>				
240 Tuition Reimbursement				12,468.00
Total Personnel Services – Employee Benefits				\$12,468.00
300 <u>Purchased Professional and Technical Services</u>				
360 Employee Training and Development Services				5,781.00
390 Other Purchased Professional and Technical Services				200.00
Total Purchased Professional and Technical Services				\$5,981.00
500 <u>Other Purchased Services</u>				
580 Travel				1,071.37
Total Other Purchased Services				\$1,071.37
Total 2836 Staff Development Services – Non-Instructional, Non-Certified Staff Only				\$19,520.37

LEA : 121394603 Northwestern Lehigh SD

Printed 11/18/2022 2:54:29 PM

General Fund (10)				
2900 Other Support Services	<u>Elementary</u>	<u>Secondary</u>	<u>Federal</u>	<u>Total</u>
500 <u>Other Purchased Services</u>				
595 IU Payments By Withholding				42,811.14
Total Other Purchased Services				\$42,811.14
Total 2900 Other Support Services				\$42,811.14

LEA : 121394603 Northwestern Lehigh SD

Printed 11/18/2022 2:54:29 PM

General Fund (10)

2910 Support Services Not Listed Elsewhere In the 2000 Series

Elementary Secondary Federal Total

500 Other Purchased Services

595 IU Payments By Withholding 42,811.14

Total Other Purchased Services \$42,811.14

Total 2910 Support Services Not Listed Elsewhere In the 2000 Series \$42,811.14

LEA : 121394603 Northwestern Lehigh SD

Printed 11/18/2022 2:54:39 PM

General Fund (10)

3000 Operation of Non-Instructional Services		<u>Total</u>
100 <u>Personnel Services – Salaries</u>		
100 Personnel Services – Salaries	522,174.52	
Total Personnel Services – Salaries	\$522,174.52	
200 <u>Personnel Services – Employee Benefits</u>		
210 Group Insurance – Contracted Provider	6,423.80	
220 Social Security Contributions	39,946.71	
230 PSERS Retirement Contributions	174,998.82	
299 All Other Employee Benefits	5,312.24	
Total Personnel Services – Employee Benefits	\$226,681.57	
300 <u>Purchased Professional and Technical Services</u>		
330 Other Professional Services	5,500.00	
390 Other Purchased Professional and Technical Services	43,828.10	
Total Purchased Professional and Technical Services	\$49,328.10	
400 <u>Purchased Property Services</u>		
410 Cleaning Services	18,629.42	
430 Repairs and Maintenance Services	3,340.17	
440 Rentals	1,257.12	
490 Other Purchased Property Services	4,343.00	
Total Purchased Property Services	\$27,569.71	
500 <u>Other Purchased Services</u>		
520 Insurance – General	24,243.00	
580 Travel	8,850.85	
Total Other Purchased Services	\$33,093.85	
600 <u>Supplies</u>		
610 General Supplies	133,181.38	
630 Food	548.67	
640 Books and Periodicals	183.41	
650 Supplies & Fees – Technology Related	516.18	
Total Supplies	\$134,429.64	
800 <u>Other Objects</u>		
810 Dues and Fees	22,891.08	
860 Grants To Municipal and Community Service Organizations	5,000.00	
880 Refunds of Prior Years' Receipts	19,826.76	
890 Miscellaneous Expenditures	27,764.29	
Total Other Objects	\$75,482.13	
Total 3000 Operation of Non-Instructional Services	\$1,068,759.52	

LEA : 121394603 Northwestern Lehigh SD

Printed 11/18/2022 2:54:39 PM

General Fund (10)

3200 Student Activities

	<u>Elementary</u>	<u>Secondary</u>	<u>Federal</u>	<u>Total</u>
100 <u>Personnel Services – Salaries</u>				
100 Personnel Services – Salaries			85.36	522,174.52
Total Personnel Services – Salaries			\$85.36	\$522,174.52
200 <u>Personnel Services – Employee Benefits</u>				
210 Group Insurance – Contracted Provider				6,423.80
220 Social Security Contributions				39,946.71
230 PSERS Retirement Contributions				174,998.82
299 All Other Employee Benefits				5,312.24
Total Personnel Services – Employee Benefits				\$226,681.57
300 <u>Purchased Professional and Technical Services</u>				
330 Other Professional Services				5,500.00
390 Other Purchased Professional and Technical Services				43,828.10
Total Purchased Professional and Technical Services				\$49,328.10
400 <u>Purchased Property Services</u>				
410 Cleaning Services				18,629.42
430 Repairs and Maintenance Services				3,340.17
440 Rentals				1,257.12
490 Other Purchased Property Services				4,343.00
Total Purchased Property Services				\$27,569.71
500 <u>Other Purchased Services</u>				
520 Insurance – General				24,243.00
580 Travel				8,850.85
Total Other Purchased Services				\$33,093.85
600 <u>Supplies</u>				
610 General Supplies				133,181.38
630 Food				548.67
640 Books and Periodicals				183.41
650 Supplies & Fees – Technology Related				516.18
Total Supplies				\$134,429.64
800 <u>Other Objects</u>				
810 Dues and Fees				22,891.08
890 Miscellaneous Expenditures				7,389.83
Total Other Objects				\$30,280.91
Total 3200 Student Activities			\$85.36	\$1,023,558.30

Page 107

LEA : 121394603 Northwestern Lehigh SD

Printed 11/18/2022 2:54:39 PM

General Fund (10)

3400 Scholarships and Awards	<u>Elementary</u>	<u>Secondary</u>	<u>Federal</u>	<u>Total</u>
800 <u>Other Objects</u>				
890 Miscellaneous Expenditures				20,374.46
Total Other Objects				\$20,374.46
Total 3400 Scholarships and Awards				\$20,374.46

LEA : 121394603 Northwestern Lehigh SD

Printed 11/18/2022 2:54:47 PM

General Fund (10)

5000 Other Expenditures and Financing Uses		<u>Total</u>
800 <u>Other Objects</u>		
830 Interest		1,006,482.85
880 Refunds of Prior Years' Receipts		2,055.38
Total Other Objects		\$1,008,538.23
900 <u>Other Uses of Funds</u>		
910 Redemption of Principal		2,885,000.00
932 Capital Reserve Fund Transfers Applicable To Fund 32		612,868.00
939 Other Fund Transfers		70,836.35
Total Other Uses of Funds		\$3,568,704.35
Total 5000 Other Expenditures and Financing Uses		\$4,577,242.58

LEA : 121394603 Northwestern Lehigh SD

Printed 11/18/2022 2:54:47 PM

General Fund (10)

5100 Debt Service / Other Expenditures and Financing Uses	<u>Elementary</u>	<u>Secondary</u>	<u>Federal</u>	<u>Total</u>
800 <u>Other Objects</u>				
830 Interest				1,006,482.85
880 Refunds of Prior Years' Receipts				2,055.38
Total Other Objects				\$1,008,538.23
900 <u>Other Uses of Funds</u>				
910 Redemption of Principal				2,885,000.00
Total Other Uses of Funds				\$2,885,000.00
Total 5100 Debt Service / Other Expenditures and Financing Uses				\$3,893,538.23

LEA : 121394603 Northwestern Lehigh SD

Printed 11/18/2022 2:54:47 PM

General Fund (10)

5110 Debt Service	<u>Elementary</u>	<u>Secondary</u>	<u>Federal</u>	<u>Total</u>
800 <u>Other Objects</u>				
830 Interest				1,006,482.85
Total Other Objects				\$1,006,482.85
900 <u>Other Uses of Funds</u>				
910 Redemption of Principal				2,885,000.00
Total Other Uses of Funds				\$2,885,000.00
Total 5110 Debt Service				\$3,891,482.85

LEA : 121394603 Northwestern Lehigh SD

Printed 11/18/2022 2:54:47 PM

General Fund (10)

5130 Refund of Prior Year Revenues / Receipts	<u>Elementary</u>	<u>Secondary</u>	<u>Federal</u>	<u>Total</u>
800 <u>Other Objects</u>				
880 Refunds of Prior Years' Receipts				2,055.38
Total Other Objects				\$2,055.38
Total 5130 Refund of Prior Year Revenues / Receipts				\$2,055.38

LEA : 121394603 Northwestern Lehigh SD

Printed 11/18/2022 2:54:47 PM

General Fund (10)

5200 Interfund Transfers – Out	<u>Elementary</u>	<u>Secondary</u>	<u>Federal</u>	<u>Total</u>
900 <u>Other Uses of Funds</u>				
932 Capital Reserve Fund Transfers Applicable To Fund 32				612,868.00
939 Other Fund Transfers				70,836.35
Total Other Uses of Funds				\$683,704.35
Total 5200 Interfund Transfers – Out				\$683,704.35

LEA : 121394603 Northwestern Lehigh SD

Printed 11/18/2022 2:54:47 PM

General Fund (10)

5230 Capital Projects Fund Transfers	<u>Elementary</u>	<u>Secondary</u>	<u>Federal</u>	<u>Total</u>
900 <u>Other Uses of Funds</u>				
932 Capital Reserve Fund Transfers Applicable To Fund 32				612,868.00
Total Other Uses of Funds				\$612,868.00
Total 5230 Capital Projects Fund Transfers				\$612,868.00

LEA : 121394603 Northwestern Lehigh SD

Printed 11/18/2022 2:54:47 PM

General Fund (10)

5240 Debt Service Fund Transfers	<u>Elementary</u>	<u>Secondary</u>	<u>Federal</u>	<u>Total</u>
900 <u>Other Uses of Funds</u>				
939 Other Fund Transfers				48,931.35
Total Other Uses of Funds				\$48,931.35
Total 5240 Debt Service Fund Transfers				\$48,931.35

LEA : 121394603 Northwestern Lehigh SD

Printed 11/18/2022 2:54:47 PM

General Fund (10)

5250 Enterprise Fund Transfers	<u>Elementary</u>	<u>Secondary</u>	<u>Federal</u>	<u>Total</u>
900 <u>Other Uses of Funds</u>				
939 Other Fund Transfers				21,905.00
Total Other Uses of Funds				\$21,905.00
Total 5250 Enterprise Fund Transfers				\$21,905.00

LEA : 121394603 Northwestern Lehigh SD

Printed 11/18/2022 2:54:42 PM

Student Sponsored Activity Fund (21)

3200 Student Activities	<u>Elementary</u>	<u>Secondary</u>	<u>Federal</u>	<u>Total</u>
300 <u>Purchased Professional and Technical Services</u>				
323 Professional Educational Services – Other Educational Agencies				11,247.00
Total Purchased Professional and Technical Services				\$11,247.00
400 <u>Purchased Property Services</u>				
440 Rentals				1,250.00
490 Other Purchased Property Services				265.00
Total Purchased Property Services				\$1,515.00
500 <u>Other Purchased Services</u>				
599 Other Miscellaneous Purchased Services				9,173.82
Total Other Purchased Services				\$9,173.82
600 <u>Supplies</u>				
610 General Supplies				35,257.90
630 Food				3,146.96
640 Books and Periodicals				1,899.00
Total Supplies				\$40,303.86
Total 3200 Student Activities				\$62,239.68

LEA : 121394603 Northwestern Lehigh SD

Printed 11/18/2022 2:54:44 PM

Capital Reserve Fund - § 1431 (32)

4000 Facilities Acquisition, Construction and Improvement Services

Total

300 Purchased Professional and Technical Services

330 Other Professional Services	81.00
---------------------------------	-------

Total Purchased Professional and Technical Services	\$81.00
---	---------

400 Purchased Property Services

430 Repairs and Maintenance Services	169,935.55
--------------------------------------	------------

Total Purchased Property Services	\$169,935.55
-----------------------------------	--------------

Total 4000 Facilities Acquisition, Construction and Improvement Services	\$170,016.55
--	--------------

LEA : 121394603 Northwestern Lehigh SD

Printed 11/18/2022 2:54:44 PM

Capital Reserve Fund - § 1431 (32)

4200 Existing Site Improvement Services

<u>Elementary</u>	<u>Secondary</u>	<u>Federal</u>	<u>Total</u>
-------------------	------------------	----------------	--------------

400 Purchased Property Services

430 Repairs and Maintenance Services			169,935.55
--------------------------------------	--	--	------------

Total Purchased Property Services			\$169,935.55
--	--	--	---------------------

Total 4200 Existing Site Improvement Services			\$169,935.55
--	--	--	---------------------

LEA : 121394603 Northwestern Lehigh SD

Printed 11/18/2022 2:54:44 PM

Capital Reserve Fund - § 1431 (32)

4600 Existing Building Improvement Services

<u>Elementary</u>	<u>Secondary</u>	<u>Federal</u>	<u>Total</u>
-------------------	------------------	----------------	--------------

300 Purchased Professional and Technical Services

330 Other Professional Services			81.00
---------------------------------	--	--	-------

Total Purchased Professional and Technical Services			\$81.00
--	--	--	----------------

Total 4600 Existing Building Improvement Services			\$81.00
--	--	--	----------------

LEA : 121394603 Northwestern Lehigh SD

Printed 11/18/2022 2:54:35 PM

Debt Service Fund (40)

2000 Support Services

Total

300 Purchased Professional and Technical Services

330 Other Professional Services	50,906.35
---------------------------------	-----------

Total Purchased Professional and Technical Services	\$50,906.35
---	-------------

Total 2000 Support Services	\$50,906.35
-----------------------------	-------------

LEA : 121394603 Northwestern Lehigh SD

Printed 11/18/2022 2:54:35 PM

Debt Service Fund (40)

2300 Support Services – Administration

<u>Elementary</u>	<u>Secondary</u>	<u>Federal</u>	<u>Total</u>
-------------------	------------------	----------------	--------------

300 Purchased Professional and Technical Services

330 Other Professional Services			50,906.35
---------------------------------	--	--	-----------

Total Purchased Professional and Technical Services			\$50,906.35
--	--	--	--------------------

Total 2300 Support Services – Administration			\$50,906.35
---	--	--	--------------------

LEA : 121394603 Northwestern Lehigh SD

Printed 11/18/2022 2:54:35 PM

Debt Service Fund (40)

2390 Other Administration Services

<u>Elementary</u>	<u>Secondary</u>	<u>Federal</u>	<u>Total</u>
-------------------	------------------	----------------	--------------

300 Purchased Professional and Technical Services

330 Other Professional Services			50,906.35
---------------------------------	--	--	-----------

Total Purchased Professional and Technical Services			\$50,906.35
--	--	--	--------------------

Total 2390 Other Administration Services			\$50,906.35
---	--	--	--------------------

LEA : 121394603 Northwestern Lehigh SD

Printed 11/18/2022 2:54:50 PM

Debt Service Fund (40)

5000 Other Expenditures and Financing Uses

Total

900 Other Uses of Funds

910 Redemption of Principal	5,778,025.00
-----------------------------	--------------

Total Other Uses of Funds	\$5,778,025.00
---------------------------	----------------

Total 5000 Other Expenditures and Financing Uses	\$5,778,025.00
--	----------------

Debt Service Fund (40)

5100 Debt Service / Other Expenditures and Financing Uses	<u>Elementary</u>	<u>Secondary</u>	<u>Federal</u>	<u>Total</u>
900 <u>Other Uses of Funds</u>				
910 Redemption of Principal				5,778,025.00
Total Other Uses of Funds				\$5,778,025.00
Total 5100 Debt Service / Other Expenditures and Financing Uses				\$5,778,025.00

LEA : 121394603 Northwestern Lehigh SD

Printed 11/18/2022 2:54:50 PM

Debt Service Fund (40)

5120 Debt Service – Refunded Bonds	<u>Elementary</u>	<u>Secondary</u>	<u>Federal</u>	<u>Total</u>
900 <u>Other Uses of Funds</u>				
910 Redemption of Principal				5,778,025.00
Total Other Uses of Funds				\$5,778,025.00
Total 5120 Debt Service – Refunded Bonds				\$5,778,025.00

	<u>General Fund(10)</u>	<u>Student Sponsored Activity Fund(21)</u>	<u>Public Purpose Trust(27)</u>	<u>Other Compt Approved (28)</u>	<u>Athletic / Activity(29)</u>
1000 <u>Instruction</u>					
1100 Regular Programs - Elementary / Secondary	18,128,416.43				
1200 Special Programs - Elementary / Secondary	6,342,442.19				
1300 Vocational Education	1,356,096.12				
1600 Adult Education Programs	235,692.96				
1700 Higher Education Programs for Secondary Students	90.00				
Total Instruction	\$26,062,737.70				
2000 <u>Support Services</u>					
2100 Support Services - Students	1,552,094.25				
2200 Support Services - Instructional Staff	1,049,948.29				
2300 Support Services - Administration	2,698,132.49				
2400 Support Services - Pupil Health	337,977.71				
2500 Support Services - Business	760,162.12				
2600 Operation and Maintenance of Plant Services	4,407,978.64				
2700 Student Transportation Services	2,661,965.52				
2800 Support Services - Central	921,796.78				
2900 Other Support Services	42,811.14				
Total Support Services	\$14,432,866.94				
3000 <u>Operation of Non-Instructional Services</u>					
3200 Student Activities	1,023,558.30	62,239.68			
3300 Community Services	24,826.76				
3400 Scholarships and Awards	20,374.46				
Total Operation of Non-Instructional Services	\$1,068,759.52	\$62,239.68			
4000 <u>Facilities Acquisition, Construction and Improvement Services</u>					
4200 Existing Site Improvement Services					
4600 Existing Building Improvement Services					
Total Facilities Acquisition, Construction and Improvement Services					
5000 <u>Other Expenditures and Financing Uses</u>					
5100 Debt Service / Other Expenditures and Financing Uses	3,893,538.23				
5200 Interfund Transfers - Out	683,704.35				
Total Other Expenditures and Financing Uses	\$4,577,242.58				
TOTAL ACTUAL EXPENDITURES & OTHER FINANCING USES	\$46,141,606.74	\$62,239.68			

	<u>Capital Reserve (690.1850)(31)</u>	<u>Capital Reserve (1431)(32)</u>	<u>Other Capital Projects Fund(39)</u>	<u>Debt Service(40)</u>	<u>Permanent(90)</u>
1000 <u>Instruction</u>					
1100 Regular Programs - Elementary / Secondary					
1200 Special Programs - Elementary / Secondary					
1300 Vocational Education					
1600 Adult Education Programs					
1700 Higher Education Programs for Secondary Students					
Total Instruction					
2000 <u>Support Services</u>					
2100 Support Services - Students					
2200 Support Services - Instructional Staff					
2300 Support Services - Administration				50,906.35	
2400 Support Services - Pupil Health					
2500 Support Services - Business					
2600 Operation and Maintenance of Plant Services					
2700 Student Transportation Services					
2800 Support Services - Central					
2900 Other Support Services					
Total Support Services				\$50,906.35	
3000 <u>Operation of Non-Instructional Services</u>					
3200 Student Activities					
3300 Community Services					
3400 Scholarships and Awards					
Total Operation of Non-Instructional Services					
4000 <u>Facilities Acquisition, Construction and Improvement Services</u>					
4200 Existing Site Improvement Services		169,935.55			
4600 Existing Building Improvement Services		81.00			
Total Facilities Acquisition, Construction and Improvement Services		\$170,016.55			
5000 <u>Other Expenditures and Financing Uses</u>					
5100 Debt Service / Other Expenditures and Financing Uses				5,778,025.00	
5200 Interfund Transfers - Out					
Total Other Expenditures and Financing Uses				\$5,778,025.00	
TOTAL ACTUAL EXPENDITURES & OTHER FINANCING USES		\$170,016.55		\$5,828,931.35	

LEA : 121394603 Northwestern Lehigh SD

Printed 11/18/2022 2:54:52 PM

	<u>Total</u>
1000 <u>Instruction</u>	
1100 Regular Programs - Elementary / Secondary	18,128,416.43
1200 Special Programs - Elementary / Secondary	6,342,442.19
1300 Vocational Education	1,356,096.12
1600 Adult Education Programs	235,692.96
1700 Higher Education Programs for Secondary Students	90.00
Total Instruction	\$26,062,737.70
2000 <u>Support Services</u>	
2100 Support Services - Students	1,552,094.25
2200 Support Services - Instructional Staff	1,049,948.29
2300 Support Services - Administration	2,749,038.84
2400 Support Services - Pupil Health	337,977.71
2500 Support Services - Business	760,162.12
2600 Operation and Maintenance of Plant Services	4,407,978.64
2700 Student Transportation Services	2,661,965.52
2800 Support Services - Central	921,796.78
2900 Other Support Services	42,811.14
Total Support Services	\$14,483,773.29
3000 <u>Operation of Non-Instructional Services</u>	
3200 Student Activities	1,085,797.98
3300 Community Services	24,826.76
3400 Scholarships and Awards	20,374.46
Total Operation of Non-Instructional Services	\$1,130,999.20
4000 <u>Facilities Acquisition, Construction and Improvement Services</u>	
4200 Existing Site Improvement Services	169,935.55
4600 Existing Building Improvement Services	81.00
Total Facilities Acquisition, Construction and Improvement Services	\$170,016.55
5000 <u>Other Expenditures and Financing Uses</u>	
5100 Debt Service / Other Expenditures and Financing Uses	9,671,563.23
5200 Interfund Transfers - Out	683,704.35
Total Other Expenditures and Financing Uses	\$10,355,267.58
TOTAL ACTUAL EXPENDITURES & OTHER FINANCING USES	\$52,202,794.32

LEA : 121394603 Northwestern Lehigh SD

Printed 11/18/2022 2:55:02 PM

PSERS Salary Data (Salary Data should relate to the General Fund only)

Amount	Description	Amount
	Total Salary Base for salaries subject to PSERS withholding	19,729,086.00
	Total Federally Funded salaries subject to PSERS withholding	1,014,579.89

Title I Expenditure Data

Amount	Description	Amount
	Expenditures Funded with Current Title I Funds	205,463.00
	Expenditures Funded with Carry over Title I Funds	
Total Title I Expenditure Data		\$205,463.00

Title IV Revenue Data

Amount	Description	Amount
	Revenue from Title IV-A-1: Student Support and Academic Enrichment Grants	13,223.00
	Revenue from Title IV-B: 21st Century Community Learning Centers	

Title V Revenue Data

Amount	Description	Amount
	Revenue from Title V-B-2: Rural and Low-Income School Programs	
	Revenue from Title V-B-1: Small Rural School Achievement (Directly from the Federal Govt)	

1 .	<u>Current Special Education Expenditures within Function 1000.\r\nSee list of exclusions in the note below.</u>	4,172,673.52
2 .	<u>Current Special Education Expenditures within Function 2000.\r\nSee list of exclusions in the note below.</u>	2,796,210.52
3 .	<u>Current Special Education Expenditures within Sub-Function 2100.\r\nThis data should also be included in line 2 above.\r\nSee list of exclusions in the note below.</u>	306,035.73
4 .	<u>Current Special Education Expenditures within Sub-Function 2200.\r\nThis data should also be included in line 2 above.\r\nSee list of exclusions in the note below.</u>	207,024.60
5 .	<u>Current Special Education Expenditures within Sub-Function 2700.\r\nThis data should also be included in line 2 above.\r\nSee list of exclusions in the note below.</u>	500,012.59
6 .	<u>Current Special Education Expenditures within Sub-Function 3100.\r\nSee list of exclusions in the note below.</u>	
7 .	<u>Current Special Education Expenditures within Sub-Function 3200.\r\nSee list of exclusions in the note below.</u>	200,821.13

Note: The Current Special Education Expenditure amounts for each line should be calculated as follows:

- * Include the total expenditures for special education costs from all funds for the function/sub-function requested
- * Exclude data from sub-functions: 1243,1450,1500,1600,1807,2280,2450,2750,2990
- * Exclude data from objects: 322,511,512,516,561,562,564,566,592,593,594,595,596,597,700,830,899

Benefits for Staff Relative to Collective Bargaining Agreements

	OBJECT	COVERED	NOT COVERED	TOTAL
10 General Fund	No Self Insurance data to report			
	211 Medical Insurance	1,788,918.24	251,431.98	2,040,350.22
	212 Dental Insurance	72,615.90	22,098.55	94,714.45
	215 Eye Care Insurance	4,854.97	4,307.16	9,162.13
	216 Prescription Insurance	400,311.24	161,822.43	562,133.67
	271 Self-Insurance Medical Benefits			
	272 Self-Insurance Dental Benefits			
	275 Self-Insurance Eye Care Benefits			
	276 Self-Insurance Prescription Benefits			
	FUND TOTAL	\$2,266,700.35	\$439,660.12	\$2,706,360.47
50 Enterprise Fund	No Self Insurance data to report			
	211 Medical Insurance			
	212 Dental Insurance			
	215 Eye Care Insurance			
	216 Prescription Insurance			
	271 Self-Insurance Medical Benefits			
	272 Self-Insurance Dental Benefits			
	275 Self-Insurance Eye Care Benefits			
	276 Self-Insurance Prescription Benefits			
	FUND TOTAL			
60 Internal Service Fund	No Self Insurance data to report			
	211 Medical Insurance			
	212 Dental Insurance			
	215 Eye Care Insurance			
	216 Prescription Insurance			
	271 Self-Insurance Medical Benefits			
	272 Self-Insurance Dental Benefits			
	275 Self-Insurance Eye Care Benefits			
	276 Self-Insurance Prescription Benefits			
	FUND TOTAL			
Total of All Funds		\$2,266,700.35	\$439,660.12	\$2,706,360.47

LEA : 121394603 Northwestern Lehigh SD

Printed 11/18/2022 2:55:07 PM

Function	Special Education (Prior Year)	Nonspecial Education (Prior Year)	Total (Prior Year)	Special Education (Current Year)	Nonspecial Education (Current Year)	Total (Current Year)
2120 Guidance Services	175,199.34	755,249.37	930,448.71	171,069.34	696,527.83	867,597.17
2140 Psychological Services	200,464.57	10,079.22	210,543.79	266,428.80	20,550.98	286,979.78
2150 Speech Pathology and Audiology Services						
2160 Social Work Services				20,958.73	85,335.80	106,294.53
2260 Instruction and Curriculum Development Services	72,339.83	311,842.56	384,182.39	78,324.07	318,905.17	397,229.24
2350 Legal and Accounting Services	20,163.10	86,919.09	107,082.19	22,314.23	90,854.88	113,169.11
2420 Medical Services	72,166.79	311,096.62	383,263.41	66,616.44	271,236.27	337,852.71
2440 Nursing Services						
2700 Student Transportation Services	599,866.32	1,558,224.31	2,158,090.63	658,601.36	2,003,364.16	2,661,965.52
Total	\$1,140,199.95	\$3,033,411.17	\$4,173,611.12	\$1,284,312.97	\$3,486,775.09	\$4,771,088.06

LEA : 121394603 Northwestern Lehigh SD

Printed 11/18/2022 2:55:09 PM

(PRINCIPAL AMOUNTS ONLY)

GOVERNMENTAL FUNDS/ ACTIVITIES

	Short-Term Borrowing	General Obligation Bonds/Notes	Authority Building Obligations	OLTD, Ext Term Fin, Leases	Other Post- Employment Benefits (OPEB)	Compensated Absences	Net Pension Liability	Total
1. Debt at Beginning of Fiscal Year		44,611,000.00			5,991,237.00	567,386.00	65,752,376.00	116,921,999.00
2. Additional Debt Incurred During Year		5,780,000.00			278,350.00			6,058,350.00
3. Retirements and Repayments		8,550,000.00				97,509.00	12,295,921.00	20,943,430.00
4. Debt at End of Fiscal Year		41,841,000.00			6,269,587.00	469,877.00	53,456,455.00	102,036,919.00
5. Accreted Interest at End Of Fiscal Year								
6. Total Debt and Accreted Interest		41,841,000.00			6,269,587.00	469,877.00	53,456,455.00	102,036,919.00
7. Current Portion P&I - Due within 1 year		4,033,125.00				64,022.00		4,097,147.00
8. Interest Paid during current fiscal year		1,006,482.85						1,006,482.85

(PRINCIPAL AMOUNTS ONLY)

PROPRIETARY FUNDS

	Short-Term Borrowing	General Obligation Bonds/Notes	Authority Building Obligations	OLTD, Ext Term Fin, Leases	Other Post- Employment Benefits (OPEB)	Compensated Absences	Net Pension Liability	Total
1. Debt at Beginning of Fiscal Year					45,535.00	1,211.00	1,102,066.00	1,148,812.00
2. Additional Debt Incurred During Year					2,444.00			2,444.00
3. Retirements and Repayments							154,895.00	154,895.00
4. Debt at End of Fiscal Year					47,979.00	1,211.00	947,171.00	996,361.00
5. Accreted Interest at End Of Fiscal Year								
6. Total Debt and Accreted Interest					47,979.00	1,211.00	947,171.00	996,361.00
7. Current Portion P&I - Due within 1 year								
8. Interest Paid during current fiscal year								

LEA : 121394603 Northwestern Lehigh SD

Total Principal and Interest Payments Made by Your School - All Funds

Function	Fund		Principal (910)	Principal (920)	Interest (830)	Total (Principal +Interest)	Misc Other Uses (990)
5110	10	General Fund	2,885,000.00		1,006,482.85	3,891,482.85	
5110	20	Special Revenue Funds					
5110	30	Capital Projects Funds					
5110	40	Debt Service Fund					
5110	90	Permanent Fund					
5120	10	General Fund					
5120	20	Special Revenue Funds					
5120	30	Capital Projects Funds					
5120	40	Debt Service Fund	5,778,025.00			5,778,025.00	
5140	10	General Fund					
5140	20	Special Revenue Funds					
5140	30	Capital Projects Funds					
5140	40	Debt Service Fund					
5140	90	Permanent Fund					
Total Debt Payments - Governmental Funds			\$8,663,025.00		\$1,006,482.85	\$9,669,507.85	

Function	Fund		Principal (910)	Principal (920)	Interest (830)	Total (Principal +Interest)
5110	50	Enterprise Fund				
5110	60	Internal Service Fund				
5120	50	Enterprise Fund				
5120	60	Internal Service Fund				
5140	50	Enterprise Fund				
5140	60	Internal Service Fund				

Total Debt Payments - Proprietary Funds						
---	--	--	--	--	--	--

LEA : 121394603 Northwestern Lehigh SD

<u>Debt Details</u> <u>Governmental Funds/ Activities</u>		Principal Amounts Only				Current Portion Due Within One Year (Principal and Interest)	Interest Paid During Fiscal Year
Debt Category	Debt Issue Date (MM/YYYY)	Debt at Beginning of Fiscal Year	Additions	Reductions / Repayments	Debt at End of Fiscal Year		
General Obligation Bonds/Notes – CIB	11/2021		5,780,000.00		5,780,000.00	120,370.00	23,312.67
General Obligation Bonds/Notes – CIB	10/2019	9,790,000.00		75,000.00	9,715,000.00	296,800.00	225,550.02
General Obligation Bonds/Notes – CIB	11/2018	6,480,000.00		5,000.00	6,475,000.00	697,430.00	217,580.00
General Obligation Bonds/Notes – CIB	12/2009	7,725,000.00		150,000.00	7,575,000.00	391,183.00	111,757.37
General Obligation Bonds/Notes – CIB	6/2020	3,736,000.00		535,000.00	3,201,000.00	602,370.00	36,612.80
General Obligation Bonds/Notes – CIB	5/2019	7,645,000.00		650,000.00	6,995,000.00	885,513.00	238,012.50
General Obligation Bonds/Notes – CIB	5/2017	5,665,000.00		5,665,000.00			113,025.00
General Obligation Bonds/Notes – CIB	2/2014	470,000.00		470,000.00			12,220.00
General Obligation Bonds/Notes – CIB	1/2007	3,100,000.00		1,000,000.00	2,100,000.00	1,039,459.00	28,412.49
Compensated Absences		567,386.00		97,509.00	469,877.00	64,022.00	
Other Post-Employment Benefits (OPEB)		5,991,237.00	278,350.00		6,269,587.00		
Net Pension Liability		65,752,376.00		12,295,921.00	53,456,455.00		
Totals for Debt Entered:		\$116,921,999.00	\$6,058,350.00	\$20,943,430.00	\$102,036,919.00	\$4,097,147.00	\$1,006,482.85

<u>Bond Details</u> <u>Proprietary Funds</u>		Principal Amounts Only				Current Portion Due Within One Year (Principal and Interest)	Interest Paid During Fiscal Year
Debt Category	Debt Issue Date (MM/YYYY)	Debt at Beginning of Fiscal Year	Additions	Reductions / Repayments	Debt at End of Fiscal Year		
Compensated Absences		1,211.00			1,211.00		
Other Post-Employment Benefits (OPEB)		45,535.00	2,444.00		47,979.00		
Net Pension Liability		1,102,066.00		154,895.00	947,171.00		
Totals for Debt Entered:		\$1,148,812.00	\$2,444.00	\$154,895.00	\$996,361.00		

LEA : 121394603 Northwestern Lehigh SD

General Fund (10)

Section 1: Tuition/Purchased Services as Reported within Expenditure Detail	Amount
Tuition Reported in General Fund Expenditures 1000-560	3,574,165.27
Purchased Services in General Fund Expenditures 1000-594 and 1000-597	
Section 1 Total	\$3,574,165.27

Section 2: Tuition Paid to Institution Types During Fiscal Year	Tuition Paid For Nonspecial Education	Tuition Paid For Special Education	Total
1 1306 Institutions			
2 Institutionalized Children's Programs			
3 Juveniles Incarcerated in Adult Facilities			
4 Residential Treatment Facilities			
5 Other Local Education Agencies			
6 Brick and Mortar Charter Schools	878,722.76	386,586.15	1,265,308.91
7 Cyber Charter Schools	541,230.42	176,796.86	718,027.28
8 Career and Technology Centers	1,356,096.12		1,356,096.12
9 Approved Private Schools			
10 PA Chartered Schools for the Deaf and Blind			
11 Private Residential Rehabilitative Institutions			
12 Juvenile Detention Centers			
13 Special Program Jointures			
14 Other Tuition Not Included Elsewhere In This Section	234,732.96		234,732.96
Section 2 Total	\$3,010,782.26	\$563,383.01	\$3,574,165.27

1 .	<u>Student Transportation Services for Educational Field Trips</u>	177.84
2 .	<u>Student Transportation Services for Student Activities</u>	1,542.55
3 .	<u>Rental of Vehicles for Student Transportation Services</u>	
4 .	<u>Capital Reserve Funds</u>	

Include only district-owned transportation expenditures paid from State or local money.
DO NOT include federal expenditures or payments to contract service providers.
Contracted transportation services should not be recorded on this schedule.

LEA : 121394603 Northwestern Lehigh SD

Printed 11/18/2022 2:55:15 PM

Fund	School	School Number	Local Personnel	Local Nonpersonnel	State Personnel	State Nonpersonnel	Federal Personnel	Federal Nonpersonnel	Total	Explanation
10										
	Northwestern Lehigh El Sch	6449	4,173,225.27	459,487.07	1,901,613.83	209,374.50	345,468.62	165,074.15	7,254,243.44	
	Northwestern Lehigh HS	2821	7,212,128.22	1,219,618.84	3,286,350.96	555,743.80	289,529.32	253,049.24	12,816,420.38	
	Northwestern Lehigh MS	7353	5,172,477.23	677,480.39	2,356,943.05	308,707.53	186,069.92	157,599.80	8,859,277.92	
	Weisenberg El Sch	2819	4,301,819.97	536,433.56	1,960,210.59	244,436.71	193,512.03	150,852.95	7,387,265.81	
Total			20,859,650.69	2,893,019.86	9,505,118.43	1,318,262.54	1,014,579.89	726,576.14	36,317,207.55	