



2020 Bond Program Overview

Presented to the FPS Board of Education

December 15, 2020



❏ Presentation Overview

- Review of March 2020 Bond Approach
- Review of Financial Considerations
- Review of Schedule Considerations
- Review of Next Steps/Phase I Schools

❑ March 2020 Bond Approach

- ❑ Upon successful passage of the March 2020 Bond proposal, Plante Moran Cresa (PMC) assisted Farmington Public Schools (FPS) to confirm the proposed scope within the bond, as identified in FPS' 10-year capital planning template with three major components:
- ❑ PMC conducted the assessment through multiple on-site visits, interviews with FPS Administration and building administrators, and review of FPS-provided documentation.
- ❑ FPS's intent is to use this assessment as a road map to help establish needs for current capital needs in alignment with funding sources. The assessment provides probable costs for the following categories:
 - 2-series Bond Issuance totaling \$98,000,000
 - The ability to address the following;
 - Site/Building Envelope (Exterior Work)
 - Interior Renovations, Plumbing, HVAC, Electrical, Security, and Abatement (Interior Work)
 - Program Soft Costs (Contingencies, professional fees, testing, etc.)
 - Technology, Furniture, and Equipment Allowances

Financial Considerations

- FPS Board of Education placed a proposal for 2-series bond with a bond term of 20 years on the March 2020 election with an approximate Total Bond Amount of \$98M. The following scenario would result in a millage rate 3.20 which is below the current 3.30 mills.

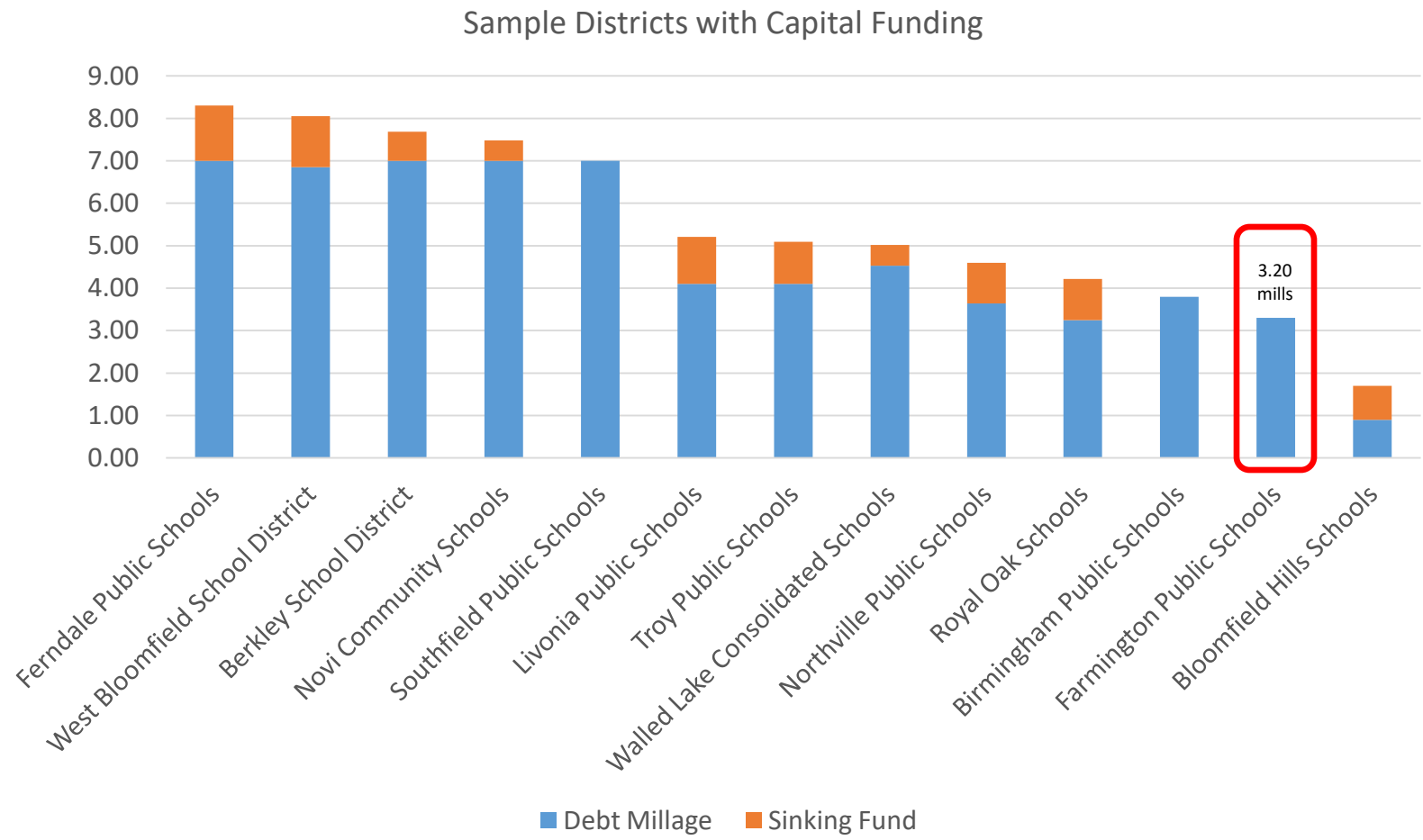


**FARMINGTON PUBLIC SCHOOL DISTRICT
COUNTY OF OAKLAND, STATE OF MICHIGAN
SCHOOL BUILDING AND SITE BONDS
(GENERAL OBLIGATION - UNLIMITED TAX)**

SUMMARY OF PROPOSED BONDING ALTERNATIVES

Scenario Table No.	Bond Amount	Bond Term	Estimated Total Interest Cost	Estimated Interest Rate	Principal Amortized within 1st 6 Years	Ballot Info		Maximum Total Mills All Debt	Increase (Decrease) in Debt Levy
						First Year Millage*	Average Millage		
Table 5a									
Series 2020	\$68,000,000	19 yrs., 10.5 mo.	\$34,283,861	3.50%	\$7,625,000				
Series 2023	30,000,000	20 yrs., 0 mo.	14,287,875	3.50%	4,150,000				
Total	\$98,000,000		\$48,571,736			0.91	Avg. 1.12	3.20	(0.10)

Financial Considerations



Source: LEA Millage Report 2018

❑ Financing Considerations – Bond Approach

❑ The \$98M allows FPS to address the critical needs in the Capital Plan identified in next 7 years as follows:

- Infrastructure Needs: \$68.5 million
- Technology: \$20.0 million
- Bus Replacement: \$5.5 million
- Furniture/Equipment: \$4.0 million

FARMINGTON PUBLIC SCHOOLS SUMMARY OF 2020 BOND BY BUILDING		
Bldg #	Building Area (SFT)	Name of School Facility
ELEMENTARY:		
1	44,451	Beechview Elementary School
2	46,196	Forest Elementary School
3	56,700	Gill Elementary School
4	78,644	Hillside Elementary School
5	49,658	Kenbrook Elementary School
6	53,326	Lanigan Elementary School
7	47,822	Longacre Elementary School
8	50,139	Wood Creek Elementary School
MIDDLE:		
9	102,222	Farmington STEAM Academy
10	139,100	East Middle School
11	99,672	Power Middle School
12	97,840	Warner Middle School
HIGH:		
13	256,006	Farmington High School
14	232,607	North Farmington High School
15	38,486	Farmington Central High School
16	40,198	Farmington Community School
17	29,394	Visions Unlimited
EARLY CHILDHOOD:		
18	44,207	Alameda Early Childhood Center
SUPPORT:		
19	22,750	Administration Building
20	21,840	Facilities
21	11,172	Transportation
22	21,826	10 Mile Building
		TOTAL BUILDINGS BUDGET

Denotes 2020/2021 Design Projects

❑ Schedule Considerations – Proposed Bond Approach

FARMINGTON PUBLIC SCHOOLS 2020 BOND SCHEDULE BY BUILDING						
Bldg #	Name of School Facility	FY 2021	FY 2022	FY 2023	FY2024	FY2025
ELEMENTARY:						
1	Beechview Elementary School					
2	Forest Elementary School					
3	Gill Elementary School					
4	Hillside Elementary School					
5	Kenbrook Elementary School					
6	Lanigan Elementary School					
7	Longacre Elementary School					
8	Wood Creek Elementary School					
MIDDLE:						
9	Farmington STEAM Academy					
10	East Middle School					
11	Power Middle School					
12	Warner Middle School					
HIGH:						
13	Farmington High School					
14	North Farmington High School					
15	Farmington Central High School					
16	Farmington Community School					
17	Visions Unlimited					
EARLY CHILDHOOD:						
18	Alameda Early Childhood Center					
SUPPORT:						
19	Administration Building					
20	Facilities					
21	Transportation					
22	10 Mile Building					

Notes: FY indicated includes a traditional design schedule of 4-6 months, 2 months of bidding/award and 6 months of construction (i.e. Summer Work)

❑ East Middle School (\$5,568,805)

Notable Highlights:

- Staff Lot & Front Loop Pavement Replacement
- Replace Lighting & Ceiling Tiles in Music Rooms
- Replace Gym Equipment (Scoreboard, Dividing Curtain, Wall Pads)
- Replace Selective Casework & Countertops
- Replace Science Room Sinks
- Replace Domestic Hot Water Heater
- Replace Unit Ventilators
- Replace Media Center HVAC System
- Replace Exhaust Fans
- Add A/C to IT Room
- Replace Lighting in Cafeteria & Kitchen
- New Sound Systems in Gym & Music Rooms
- New Clock System
- Replace Emergency Generator
- Security Enhancements
- Technology Upgrades
- Furniture/Equipment Upgrades

❑ East Middle School (\$5,568,805)



Existing Parking Lot



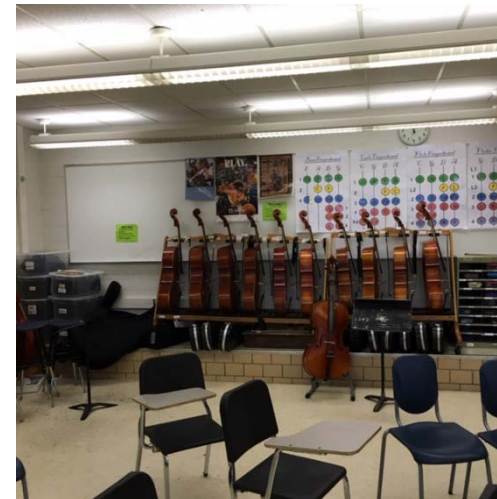
Existing Cafeteria Lighting



Existing Gym Divider



Existing Unit Ventilator



Existing Music Lighting

❑ Forest Elementary School (\$2,019,483)

Notable Highlights:

- New Playground Equipment
- Replace Building Water Service
- Replace Monument Sign
- Replace Dumpster Enclosure
- Window Replacement
- Selective Interior Door/Hardware Replacements
- Selective Classroom Ceiling Tile Replacements
- Replace Classroom Sinks
- Replace Cafeteria Lighting
- Add A/C to Kitchen
- Replace Unit Ventilators
- New Clock System
- Add Emergency Generator
- Security Enhancements
- Technology Upgrades
- Furniture/Equipment Upgrades

❑ Forest Elementary School (\$2,019,483)



Existing Monument Signage



Existing Window Systems



Existing Unit Ventilator



Existing Cafeteria Lighting

❑ Gill Elementary School (\$2,369,264)

Notable Highlights:

- Replace Asphalt Play Pad & Hoops
- New Playground Equipment
- Replace Ballfield Backstop
- Replace Dumpster Enclosure
- Replace Monument Sign
- Selective Interior/Exterior Door Replacements
- Replace Classroom Casework
- Ceiling Work in Selective Classrooms
- Replace Kitchen Flooring
- Gym Window Treatments
- Replace Gym Backboards
- Replace Domestic Water Heater
- Replace Gym Air Handling Units
- Add A/C to Kitchen
- Replace Lighting in Selective Classrooms
- New Clock System
- New Sound Systems in Gym & Cafeteria
- Add Emergency Generator
- Security Enhancements
- Technology Upgrades
- Furniture/Equipment Upgrades

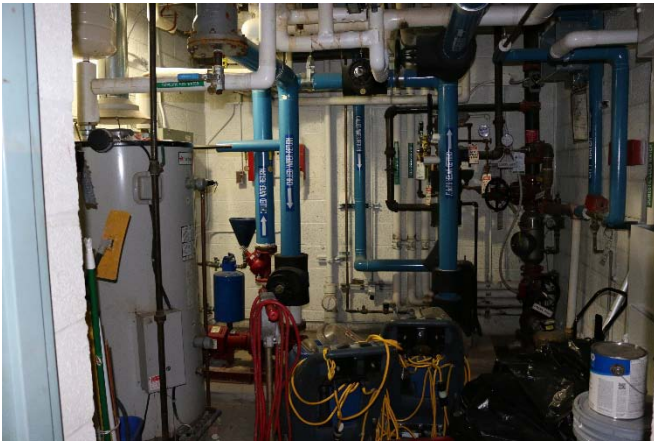
❑ Gill Elementary School (\$2,369,264)



Existing Monument Signage



Existing Dumpster Enclosure



Existing Domestic Water Heater



Existing Gym Backboards

❑ Lanigan Elementary School (\$2,482,850)

Notable Highlights:

- Front Parking Lot & Drop-Off Loop Pavement Replacement
- New Playground Equipment
- Replace Exterior Basketball Hoops
- Replace Interior Basketball Hoops
- Replace Monument Sign
- Replace Dumpster Enclosure Fencing
- Upgrade to Exterior Egress Windows
- Selective Interior Door Replacements
- Selective Classroom Ceiling Tile Replacements
- Replace Stage Curtains
- Replace Classroom Casework
- Replace Domestic Hot Water Heater
- Replace Unit Ventilators
- Replace Gym Air Handling Unit
- Replace Media Center Roof Top Unit
- Add A/C to Kitchen
- Modify Kitchen Hood Exhaust
- Replace Cafeteria Lighting
- New Sound Systems in Gym & Cafeteria
- New Clock System
- Add Emergency Generator
- Security Enhancements
- Technology Upgrades
- Furniture/Equipment Upgrades

❑ Lanigan Elementary School (\$2,482,850)



Existing Parking Lot



Existing Playground



Existing Egress Window

❏ Considerations and Next Steps

Considerations and Next Steps:

- Bidding of Summer 2021 Projects
 - Bid Pack #1 – East Middle School
 - Bid Pack #2 – Forest, Gill, and Lanigan Elementary Schools
 - Bid Pack #3 – Farmington High Schools – Commence with design in early 2021
- Regular update to FPS Administration and Board of Education December 2020 through March 2021
- Commencement of Construction – Spring 2021
- Others?

Questions/Answers